

## TRANSITING THE SUN: THE IMPACT OF STELLAR ACTIVITY ON X-RAY AND ULTRAVIOLET TRANSITS

J. LLAMA AND E. L. SHKOLNIK

Lowell Observatory, 1400 W Mars Hill Road, Flagstaff, AZ 86001, USA; [joe.llama@lowell.edu](mailto:joe.llama@lowell.edu)

Received 2014 November 20; accepted 2015 January 20; published 2015 March 19

## ABSTRACT

Transits of hot Jupiters in X-rays and the ultraviolet have been shown to be both deeper and more variable than the corresponding optical transits. This variability has been attributed to hot Jupiters having extended atmospheres at these wavelengths. Using resolved images of the Sun from NASA’s *Solar Dynamics Observatory* spanning 3.5 yr of Solar Cycle 24 we simulate transit light curves of a hot Jupiter to investigate the impact of Solar-like activity on our ability to reliably recover properties of the planet’s atmosphere in soft X-rays (94 Å), the UV (131–1700 Å), and the optical (4500 Å). We find that for stars with activity levels similar to those of the Sun, the impact of stellar activity results in underestimating the derived radius of the planet in soft X-ray/EUV by up-to 25% or overestimating it by up to 50% depending on whether the planet occults active regions. We also find that in up to 70% of the X-ray light curves the planet transits over bright starspots. In the far-ultraviolet (1600 Å and 1700 Å), we find the mean recovered value of  $R_p/R_*$  to be over-estimated by up to 20%. For optical transits we are able to consistently recover the correct planetary radius. We also address the implications of our results for transits of WASP-12 b and HD 189733b at short wavelengths.

*Key words:* planets and satellites: atmospheres – planets and satellites: individual (HD 189733b, WASP-12b) – stars: activity – stars: coronae – starspots

## 1. INTRODUCTION

Understanding the impact of stellar activity on transit and radial velocity data is not only fundamental for finding Earth-sized planets but also in determining the composition of both the largest and smallest exoplanets. For instance, by observing transits at multiple wavelengths the composition of the atmosphere of the planet can be inferred through transmission spectroscopy (see, for example, Sing et al. 2011; Gibson et al. 2012; Nikolov et al. 2013; Stevenson et al. 2014). This process requires an accurate and precise measurement of the planetary to stellar radius ratio ( $R_p/R_*$ ) at various wavelengths. It is therefore crucial that the effects of stellar activity on transit light curves are well understood since activity will alter the shape of the transit light curve.

The impact of stellar activity on transit light curves at different wavelengths has been used to not only learn about the planet but also the host star itself. At optical wavelengths, bumps in the transit light curve caused by the planet occulting starspots can be used to infer the presence of magnetically active regions on the stellar surface. By tracking the locations of these bumps in consecutive transits the spin–orbit alignment between the orbital plane of the planet and rotation axis of the star can be derived and this value is in good agreement with Rossiter–McLaughlin measurements (Winn et al. 2010; Sanchis-Ojeda & Winn 2011). For misaligned systems it may be possible to track changes in the location of bumps in the light curve over time to recover stellar butterfly patterns to investigate whether other stars exhibit such cyclic evolution in the distribution of starspots (Llama et al. 2012; Sanchis-Ojeda et al. 2013). Understanding the properties of stellar butterfly patterns will provide insight into the stellar dynamo (Berdyugina 2005).

Asymmetries in the near-UV (2800 Å) light curve of WASP-12b observed using the *Hubble Space Telescope* (*HST*) have revealed an early ingress and also a deeper transit when compared to the optical light curve (Fossati et al. 2010; Haswell et al. 2012). However, the end of the near-UV transit

coincided with the optical egress implying the presence of additional, asymmetrically distributed absorbing material in the exosphere of the planet in the near-UV.

One potential explanation for a deeper, asymmetrical transit is that heavily inflated hot Jupiters such as WASP-12b can overflow their Roche lobes (Gu et al. 2003; Ibgui et al. 2010; Li et al. 2010) which may result in an optically thick accretion stream from the planet onto the star (Lai et al. 2010). Another solution is that the early ingress is the signature of the stellar wind impacting on the magnetosphere of the planet creating a magnetospheric bow shock (Vidotto et al. 2010). This idea was modeled using Monte Carlo radiative simulations in Llama et al. (2011) where they were able to fit the near-UV observations of Fossati et al. (2010) with a bow shock model that suggests the planet’s magnetosphere extends out to a distance of  $\sim 5R_p$ .

Hot Jupiters orbiting much closer to their parent star are exposed to higher levels of stellar irradiance than the gas giants in our solar system. This increase in stellar irradiance may heat the exosphere of the planet leading to mass loss (see, for example, Lammer et al. 2003; Lecavelier Des Etangs et al. 2004). It may be possible to detect such signatures in temporal variations of transit light curve depth and duration.

Observations of HD 189733b at multiple wavelengths have been taken searching for evidence of an inflated planetary atmosphere and mass loss from the planet. Ben-Jaffel & Ballester (2013) reported a potential early ingress and also a deeper transit depth of the C II emission line at 1335 Å which they attribute to the magnetospheric bow shock occulting starlight. Their MHD modeling predicted the bow shock will have a stand-off distance of  $\sim 17R_p$ .

Ly $\alpha$  transits have been used to study both atmospheric escape and inflated planetary atmospheres on a number of hot Jupiters. Vidal-Madjar et al. (2003) observed transits in Ly $\alpha$  (1215 Å) of HD 209458b and found the first evidence of an extended exoplanetary atmosphere with a Ly $\alpha$  transit depth  $\sim 10\times$  deeper than the corresponding optical depth. Linsky et al. (2010) also observed HD 209458b and found a deeper depth in

their C II and Si III transit light curves, suggesting mass loss from the planet. Lecavelier Des Etangs et al. (2012) observed transits of HD 189733b using *HST/STIS* in Ly $\alpha$  at two epochs. In 2011 September they found an additional 14.4% absorption and also hints of an early ingress when compared to their observations in 2010 April, which were similar to the optical light curve. They attribute this variability to the stellar wind directly influencing the evaporation rate of the upper atmosphere of the planet. Observations of 55 Cancri b have shown a partial eclipse in Ly $\alpha$  that coincides with the predicted transit time, suggesting the planet has an extended atmosphere that grazes the stellar disk (Ehrenreich et al. 2012). Kulow et al. (2014) observed the hot Neptune GJ 436b in Ly $\alpha$  and found not only a deeper transit, but also that the deepest part of the Ly $\alpha$  transit occurred after the egress of the optical transit, suggesting this planet has an extended hydrogen tail.

Llama et al. (2013) investigated the impact of the varying stellar wind conditions experienced by HD 189733b as it orbits around its parent star by modeling the properties of the stellar wind from the surface of the star to the orbital distance of the planet using observed magnetic maps of the star obtained by Fares et al. (2010). They found that variability in the density and pressure of the stellar wind alters the orientation and density of the resultant bow shock, which in turn caused the predicted near-UV light curves of HD 189733b to be highly variable in both depth and duration.

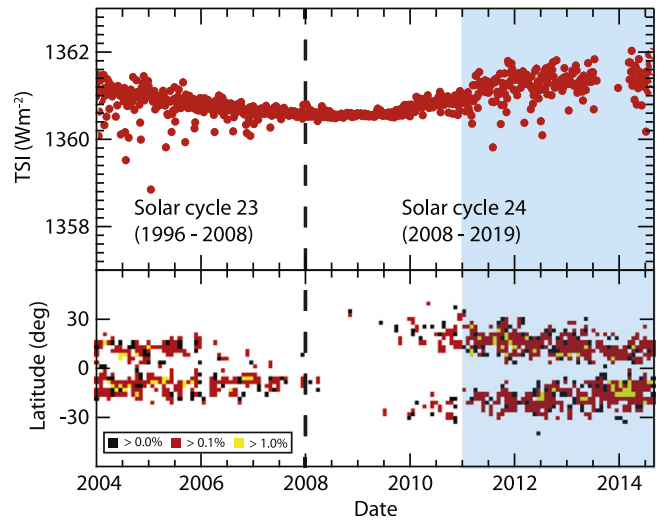
Poppenhaeger et al. (2013) observed multiple X-ray (1–63 Å) transits of HD 189733b with *Chandra* and found a combined transit depth of 6%–8%, which is  $\sim 3$  times deeper than the depth in the optical of 2.4%. They attribute this additional absorption to the planet having an extended atmosphere that is opaque to X-rays but transparent to optical light. They note, however, that given the difficulty of observing transits in X-rays it is not possible to rule out the increased transit depth being caused by stellar activity without further observations. Figure 9 of Poppenhaeger et al. (2013) shows how the derived transit depth from all the possible combinations of their X-ray light curves varies between 2.3%–9.4%.

In this paper we use resolved images of the Sun in soft X-rays, the extreme ultraviolet (EUV), the far-ultraviolet (FUV), and the optical to simulate transit light curves to investigate the extent to which stellar activity impacts light curves at these wavelengths and to determine how reliably we can recover properties of a transiting hot Jupiter.

## 2. SOLAR OBSERVATIONS AND TRANSIT MODEL

Observations of the Sun present a unique opportunity to investigate the effects of stellar activity on exoplanet transit light curves. NASA’s *Solar Dynamics Observatory* (*SDO*) has been observing the Sun since early 2010. The Atmospheric Imaging Assembly (*AIA*) on board *SDO* images the solar disk in 10 wavelengths every 10 seconds spanning the soft X-ray/EUV through the optical (with a spatial resolution of 1'' and a CCD of 4096 px x 4096 px). A summary of the wavelengths observed by *AIA* with their emission is listed in Table 1. We note that it is not currently possible to observe stars other than the Sun in the EUV; however, we include the findings of these wavelengths for completeness.

Using the Virtual Solar Observatory IDL routines provided by SolarSoft,<sup>1</sup> we downloaded *AIA* data of the Sun at all 10



**Figure 1.** Top: Total Solar Irradiance (TSI) data from NASA’s *VIRGO* instrument on the *SOHO* instrument for the past 10 yr, covering solar cycles 23 and 24 (Fröhlich & Lean 1988). Bottom: the solar butterfly pattern showing the fraction of the solar disk covered in sunspots, produced using the data from Hathaway (2010). The blue region shows the timespan for this investigation. During this time the Sun was moving from activity minimum toward maximum, and the active belts have migrated from  $\pm 35^\circ$  to  $\pm 5^\circ$ .

wavelengths. We acquired images at a cadence of one image every 24 hours between 2011 January 01 and 2014 September 01. In total we obtained  $\sim 1300$  images at each of the 10 wavelengths. We checked each image for saturated pixels using the NSATPIX keyword in the FITS header of each image and found the fraction of saturated pixels in the images to be negligible. The most heavily affected image had a saturated area  $< 0.03\%$  meaning that saturation will not affect our simulated light curves.

The top panel of Figure 1 shows the composite Total Solar Irradiance (TSI) between 2004 and 2014 (Fröhlich & Lean 1988; Fröhlich 2000). The bottom panel shows the solar butterfly pattern during this time (Hathaway 2010). The shaded blue region identifies the timespan of this investigation and demonstrates that between 2011 January and 2014 September the Sun has moved from activity minimum toward activity maximum and the active belts migrated from  $\pm 35^\circ$  toward the equator.

The top panel of Figure 2 shows simultaneous images of the solar disk from *AIA* in eight wavelengths, namely, soft X-ray/EUV (94 Å), EUV (131, 171, 193, 211, and 304 Å), FUV (1700 Å), and optical (4500 Å) on two separate dates (left and right panels).<sup>2</sup> The optical and FUV images demonstrate how the Sun appears relatively inactive, with only a few active regions present on the surface. At short wavelengths the Sun appears more active than when viewed in the optical. The EUV/FUV images reveal how relatively small sunspots in the optical correspond to very bright, large, extended regions at short wavelengths. It is this increase in activity and active region coverage at shorter wavelengths that will have the greatest effect on exoplanet transit light curves.

We simulated the transit light curve of an exoplanet over each image of the solar disk. To compute the light curves we adapted the transit code developed in Llama et al. (2011) and

<sup>2</sup> For brevity, we do not show 335 Å and 1600 Å as these results are similar to 304 Å and 1700 Å, respectively.

<sup>1</sup> <http://www.lmsal.com/solarsoft/>

**Table 1**  
Wavelengths Observed by the Atmospheric Imaging Assembly (AIA) on board NASA’s *Solar Dynamics Observatory* (SDO)

Wavelength (Å)	Regime	Primary Ions	Source Region	Temperature (K)	Limb Bright/Dark
94	Soft X-ray / EUV	Fe XVIII	Flaring and quiet corona	$6.3 \times 10^6$	Brightened
131	EUV	Fe VIII, XX, XXII	Flaring and quiet corona	$4 \times 10^5, 10^7, 1.6 \times 10^7$	Brightened
171	EUV	Fe IX	Quiet corona and upper transition region	$6.3 \times 10^5$	Brightened
193	EUV	Fe XII, XXIV	Corona and hot flare plasma	$1.2 \times 10^6, 2 \times 10^7$	Brightened
211	EUV	Fe XIV	Active regions of the corona	$2 \times 10^6$	Brightened
304	EUV	He II	Chromosphere and transition region	$5 \times 10^4$	Brightened
335	EUV	Fe XVI	Active regions of the corona	$2.5 \times 10^6$	Brightened
1600	FUV	C IV, continuum	Transition region and upper photosphere	$10^5, 5 \times 10^3$	Darkened
1700	FUV	continuum	Temperature minimum, photosphere	$5 \times 10^3$	Darkened
4500	Optical	continuum	Photosphere	$5 \times 10^3$	Darkened

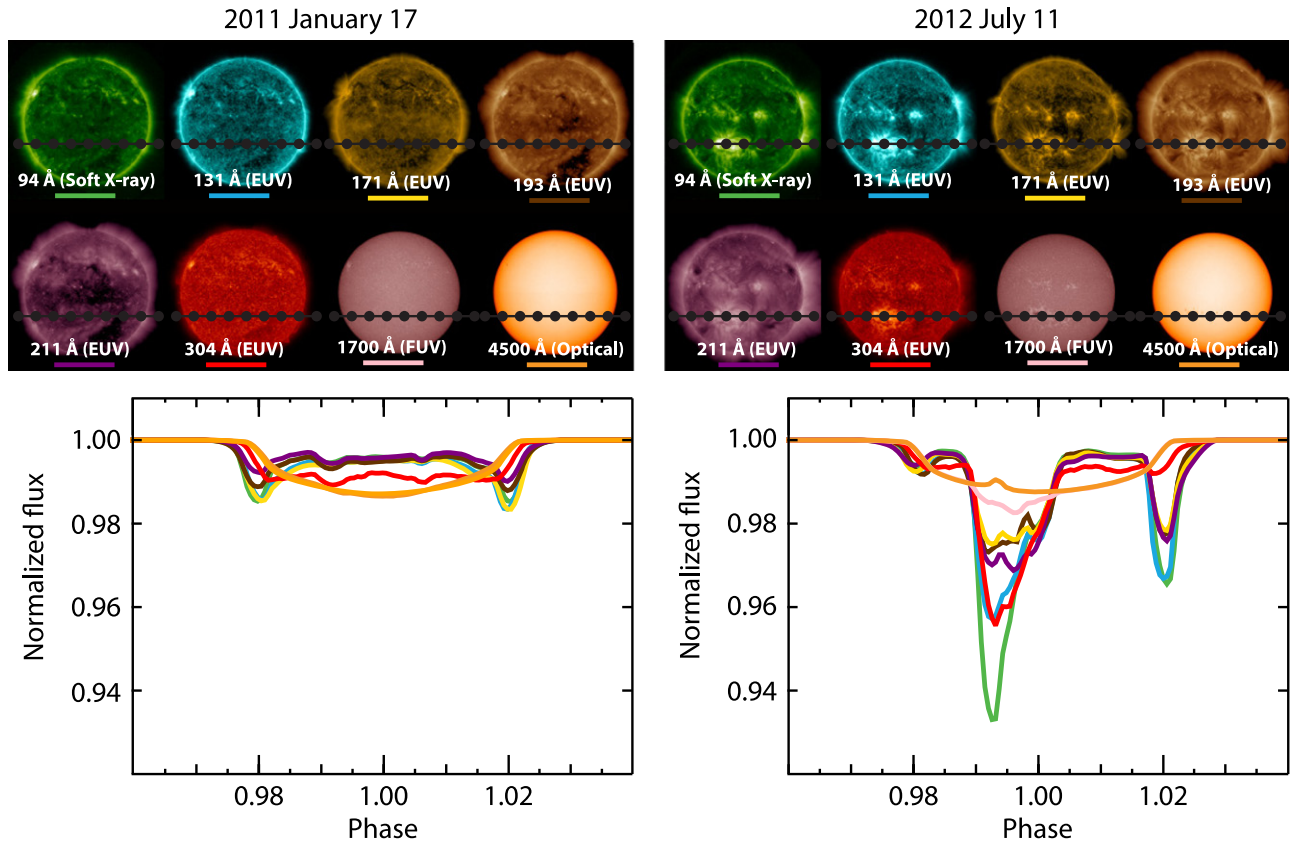
**Note.** Adapted from <http://aia.lmsal.com/public/instrument.htm>.

Llama et al. (2013). This code was originally created to simulate light curves of a planet transiting over a limb-darkened stellar disk. Rather than simulating a stellar disk, we were able to use the images from SDO. We assumed the planet to be a hot Jupiter with  $R_p/R_* = 0.1$ . To enable a comparison between the light curves at each wavelength we assumed the radius of the planet to be the same in all the simulations, i.e., the size of the planet’s atmosphere does not change with wavelength.

On the Sun, the activity belts are confined to within  $\pm 35^\circ$  of the equator. We therefore chose two values for the impact parameter,  $b$ . First,  $b = 0$ , so that the planet transits across the

equator of the star and the transit chord will not intersect the activity belts and  $b = -0.3$  so the planet occasionally transits over active regions.

Finally, we assumed the planet to be completely dark, i.e., any region of the stellar disk occulted by the planet will have a flux of zero. We assumed a high cadence transit observation such that each light curve is composed of 100 data points and the semimajor axis of the planet is  $a \sim 0.02$  AU so that the planet transits once every 24 h. As the duration of the transit event is much shorter than the rotation period of the Sun, we assumed the Sun to be static in each of our simulations. At each step, the location of the planet over the stellar disk was



**Figure 2.** Top: two sets of simultaneous images of the Sun obtained from NASA’s SDO spacecraft. Overplotted on each image is the trajectory of a simulated hot Jupiter with  $R_p/R_* = 0.1$  and  $b = -0.3$ . The left panel shows images where there was little activity along the transit chord, while the right panel is an example of when the transit chord intersects active regions. Bottom: the resultant transit light curves are color-coded by wavelength. At soft X-ray/EUV wavelengths the Sun is limb-brightened and so the transit is much deeper at ingress and egress than mid-transit. The optical transits that intersect active regions (right) show a bump in the light curve. At shorter wavelengths where active regions appear bright, the light curves exhibit a dip as the planet occults an active region.



computed and the loss in flux caused by the planet occulting starlight was calculated to produce the simulated light curve. The effects of lower (and more realistic) cadence observations are discussed in Section 4.

### 3. RESULTS

#### 3.1. Impact of Stellar Activity as a Function of Wavelength

The top panel of Figure 2 shows sample transit paths of a hot Jupiter with  $R_p/R_* = 0.1$  and  $b = -0.3$  across the solar disk in multiple wavelengths. The images reveal that in the soft X-ray and EUV regime, the stellar disk is limb brightened rather than limb darkened. This difference in the distribution of starlight will change the shape of the transit light curve. The final column of Table 1 lists whether the Sun is limb brightened or limb darkened for each of the observed wavelengths. The images in the left panel of Figure 2 are examples of when there is little activity along the transit path. As such, the simulated transit light curves will be examples of nearly quiescent transits. The images in the right panel of Figure 2 show active regions on the disk of the Sun intersecting the transit path causing the transit light curves to deviate from the nearly quiescent shape.

The bottom panel of Figure 2 shows the corresponding simulated transit light curves (color-coded by wavelength). The left panel shows nearly quiescent light curves where the planet has not transited over large active regions. In these high energy transits, a dip during both ingress and egress is registered in the light curve. The transit is also shallower at mid-transit when compared to the optical light curve. This is a consequence of the stellar disk being limb brightened at these wavelengths, so the planet occults a much larger proportion of the total starlight as it transits over the limbs of the star, as opposed to the optical case where the light is more evenly distributed over the entire disk of the star.

At short wavelengths, active regions have a higher contrast ratio compared to their surroundings than sunspots in the optical. Therefore, at these wavelengths, when the planet transits over an active region, the amount of light blocked by the planet becomes greater which produces a negative dip in the light curve. There have been efforts in the literature to simulate the effects that bright spot occultations and the corresponding dips in light curves have on exoplanet transmission spectroscopy (Oshagh et al. 2014). The light curves in the right panel of Figure 2 show the effects of the planet transiting over active regions on the transit shape. In the optical, starspots are cooler than their surroundings and so appear dark. Therefore, when the planet transits over a starspot, the fractional loss in light is less and a positive bump is registered in the light curve (e.g., Rabus et al. 2009).

The evolution of unocculted active regions on the stellar disk makes it difficult to accurately normalize the stellar flux level. Throughout this work we have assumed the Sun to be static during a transit observation. Given the relatively low activity level and slow rotation period of the Sun, this is a reasonable assumption. It is worthy of note, however, that for more active stars the corona will be evolving rapidly and obtaining a long baseline is crucial in accurately normalizing the data and recovering an accurate value of  $R_p/R_*$ .

#### 3.2. Transit Asymmetries

Figure 3 shows 94 Å images of the Sun over two Carrington rotations. Under this setup the Sun has rotated  $\sim 60^\circ$  between each image. The top row is for Carrington rotation 2107 (2011 February) when the Sun was in activity minimum, and the bottom row is for Carrington rotation 2149 (2014 April) when the Sun was more active (but still not at activity maximum). The corresponding 94 Å (green) and optical (orange) light curves are shown below each image for an impact parameter of  $b = -0.3$ . We find that even for transits separated by a few days the 94 Å light curves can be highly variable and have a different shape when compared to the previous transit. This is due to the corona being highly structured and variable over short timescales. Indeed, for more active stars, and for stars with stronger differential rotation rates, the coronae may be even more dynamic than shown in Figure 3 (Pevtsov et al. 2003; Gibb et al. 2014).

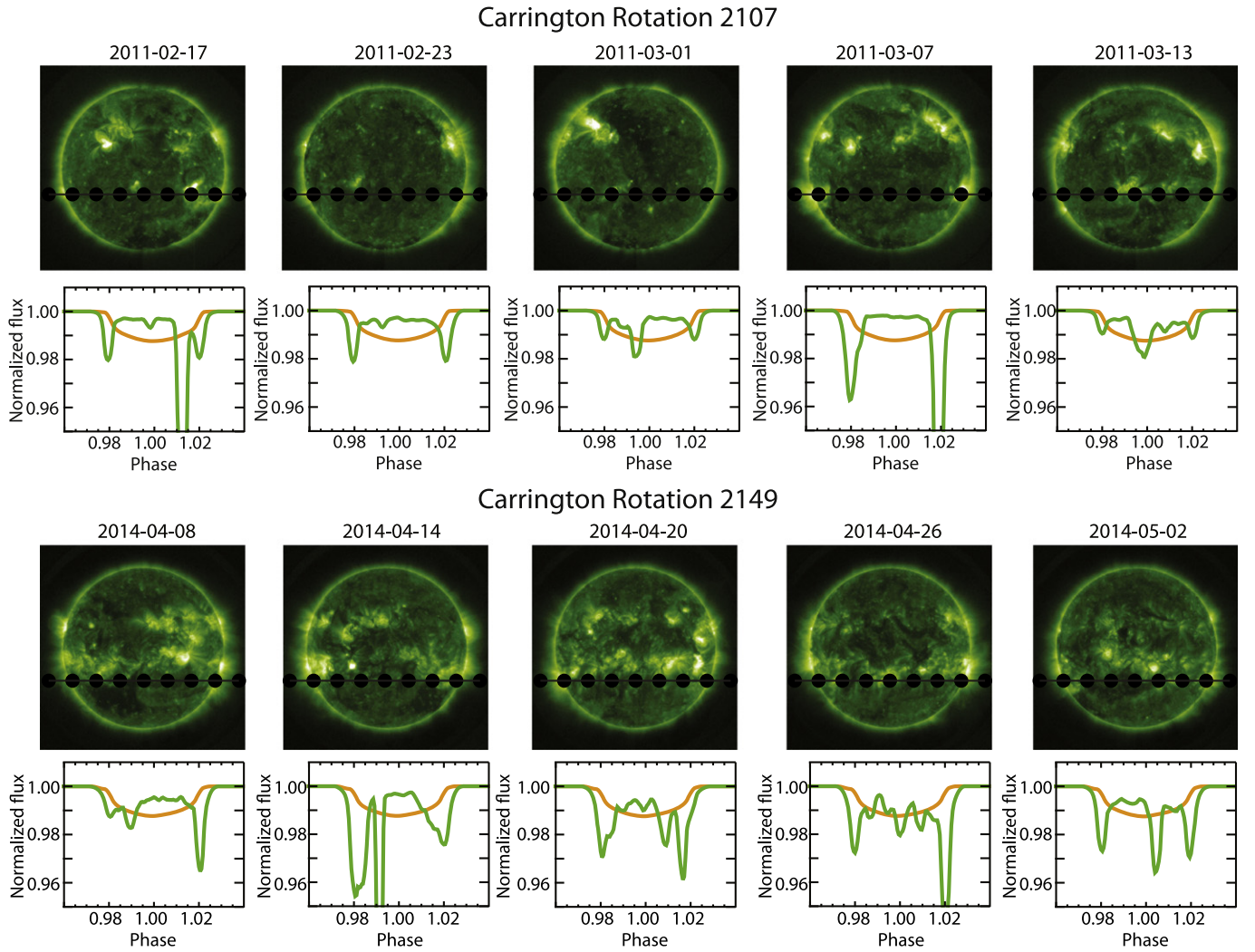
Since high energy transits are sensitive to starlight from the upper atmosphere of the star including the extended corona, it may in principle be possible to use transits at these wavelengths to study the properties of the corona. The duration of transit events at these wavelengths may be longer than the corresponding optical events which are only sensitive to light from the photosphere of the star. In our simulated 94–335 Å light curves we see hints of an extended transit when the planet has transited over an active region on the stellar limb. We find that the maximum difference in phase between the 94 Å and optical ingress is  $\sim 0.005$ . In principle, this effect could be used to study the extent and density profile of stellar coronae; however, very high cadence, signal-to-noise transits would be required which is currently observationally challenging at these wavelengths.

For WASP-12b, the near-UV (2800 Å) ingress and optical ingress timing differed by  $\sim 0.02$  in phase. We found no detectable timing difference between our FUV (1600 and 1700 Å) and optical light curves. This therefore suggests that the asymmetry in the light curve of WASP-12b is unlikely to be have been caused by stellar activity, but indeed could be caused by additional, asymmetrically distributed material surrounding the exosphere of the planet.

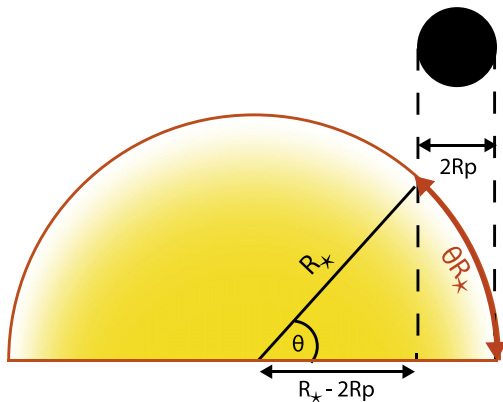
#### 3.3. Transit Depths

To further quantify the variability in our simulated light curves, we computed the maximum depth  $\Delta F_{\max}$  for each light curve. Schlawin et al. (2010) provide an estimate for the maximum depth of limb-brightened transits based on a model where the flux from the star is primarily concentrated at the limb rather than at disk center as is typical for optical wavelengths. Under this setup, the maximum expected transit depth (in the absence of active regions on the stellar surface) occurs at second contact of the transit.

Figure 4 shows a top-down schematic of this setup. The length of the arc occulted by the planet is  $\theta R_*$ , and  $2R_p = R_*(1 - \cos \theta) \approx \frac{1}{2}R_*\theta^2$  for  $\theta \ll 1$ . The area occulted by the planet can then be approximated by an ellipse with semimajor axis  $\frac{1}{2}\theta R_*$  and semi-minor axis  $R_p$ , implying the occulted area can be expressed as  $A = \pi R_p \sqrt{R_p R_*}$ . Finally, the maximum transit depth (in normalized units) is then



**Figure 3.** Soft X-ray ( $94 \text{ \AA}$ ) images of the Sun over two complete rotations. Overplotted is the orbital path of the simulated planet ( $R_p/R_* = 0.1$ ,  $b = -0.3$ ). The corresponding  $94 \text{ \AA}$  transit light curves (green) and the simultaneous optical light curve (orange) is shown beneath each image. The  $94 \text{ \AA}$  light curves reveal how even over short timescales the transits are highly variable due the structure and evolution of the corona and rotational modulation. As the planet transits over a bright region of the corona a large dip is registered in the  $94 \text{ \AA}$  light curve but not in the optical light curve.



**Figure 4.** Top-down schematic of a limb-brightened transit (not drawn to scale) adapted from Schlawin et al. (2010). The image shows how the majority of the starlight comes from the limb of the star. Under this setup, the deepest part of the transit will be at ingress and egress, rather than mid-transit for longer wavelength observations.

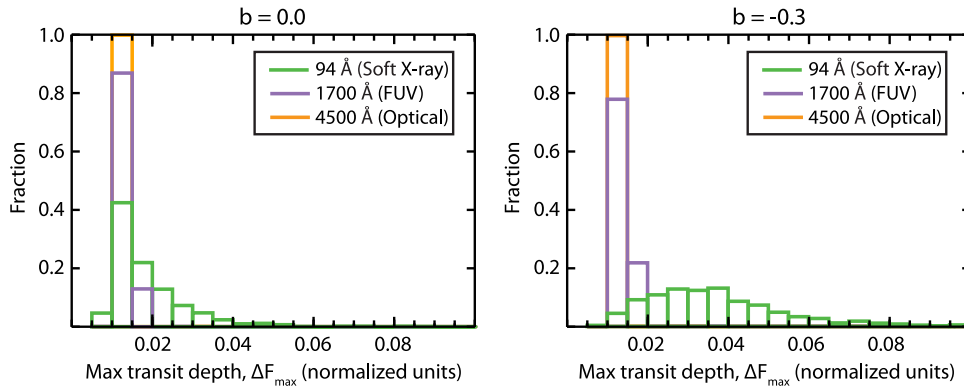
expressed as

$$\frac{\Delta F_{\text{bright}}}{F_{\text{bright}}} = \frac{A}{2\pi R_*^2} = \frac{1}{2} \left( \frac{R_p}{R_*} \right)^{3/2}. \quad (1)$$

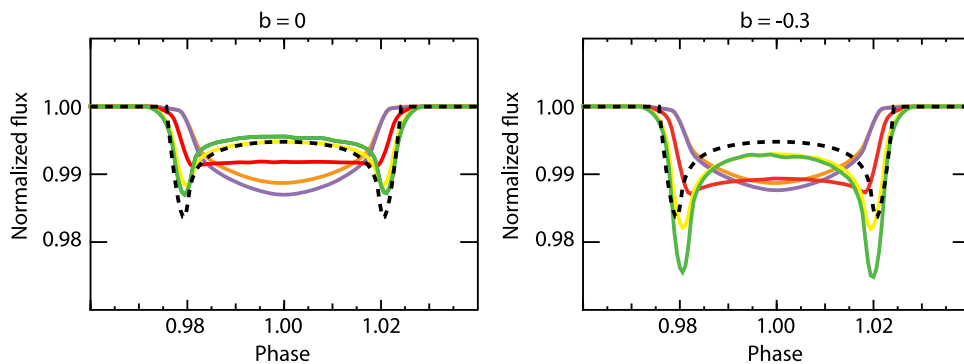
For a more detailed geometric description and derivation of Equation (1) we refer the reader to Schlawin et al. (2010). They note that for the same value of  $R_p/R_*$ , transits at wavelengths where the stellar disk is limb brightened will be deeper than those where the star is limb darkened. For a uniformly illuminated stellar disk, the maximum transit depth occurs when the entire disk of the planet is within the stellar disk (as viewed by the observer), and the normalized depth of the transit can be expressed as

$$\frac{\Delta F_{\text{uniform}}}{F_{\text{uniform}}} = \frac{2\pi R_p^2}{2\pi R_*^2} = \left( \frac{R_p}{R_*} \right)^2. \quad (2)$$

In the presence of limb darkening, the mid-transit depth will deviate slightly from the depth given in Equation (2). Equations (1) and (2) provide estimates for  $R_p/R_*$ ; however,



**Figure 5.** Histograms of maximum transit depth,  $\Delta F_{\max}$  as a function of wavelength for the 94 Å (green), 1700 Å (purple), and 4500 Å (orange) light curves. The left panel is for an impact parameter  $b = 0$ ; the right histogram is for  $b = -0.3$ . In the FUV and optical we generally recover a consistent value of  $\Delta F_{\max}$  (see Table 2). We find a much larger range of maximum transit depths in the soft X-ray/EUV caused by both unocculted active regions creating shallower transits and occulted active regions resulting in deeper transits. The results for the other wavelengths are shown in Table 2.



**Figure 6.** Averaged light curves for our 94 Å (green), 171 Å (yellow), 304 Å (red), 1700 Å (purple), and 4500 Å (orange) simulated light curves. The left panel shows the averaged light curves for a planet with impact parameter  $b = 0$  and the right panel for  $b = -0.3$ . The limb-brightened light curves in the left panel are shallower than those in the right panel due to the effects of unocculted bright regions on the stellar disk. The dashed line is a model limb-brightened, spot-free, model transit from Schlawin et al. (2010).

in practice, a full transit model must be fit to the light curve to accurately derive  $R_p/R_*$  (see Section 3.5).

Figure 5 is a histogram of all values of  $\Delta F_{\max}$  computed from all the simulated transit light curves for the 94 Å, 1700 Å, and 4500 Å light curves. We find that  $\Delta F_{\max}$  can deviate significantly from the predicted value of  $\Delta F_{\text{bright}}$  given in Equation (1), and that the deepest part of the transit may not be at the limb when active regions are present on the stellar disk.

For the optical and FUV light curves we find that activity has less impact on the depth of the transit and we recovered the expected transit depth of 0.01 in  $\sim 80\%$  of the FUV light curves. In the optical, when the planet transits over a dark sunspot, the fractional loss in light is less and so a relatively localized, positive bump is registered in the light curve (which is excluded from the fitting). As such, we recovered the expected transit depth of 0.01 in all of our optical light curves. Figure 5 reveals how the scatter in  $\Delta F_{\max}$  decreases with longer wavelengths.

The largest range in the maximum depth of the transit occurs at the shortest wavelengths (94 Å–335 Å). This will have significant impact on the ability to reliably recover the radius of the planet (see Section 3.5). The light curves where the planet has transited over the equator of the Sun ( $b = 0$ ) are on average shallower than the light curves where the planet transits over the activity belts ( $b = -0.3$ ). This can be seen in Figure 6 where the average of the  $\sim 1300$  simulated light curves for each wavelength in our simulations for both impact parameters is

computed. These shallow transits are the direct consequence of unocculted bright regions on the stellar disk during the transit. In the normalized stellar image unocculted bright regions mean the planet occults relatively less starlight during the transit, resulting in a shallower transit. For a more in-depth discussion of unocculted dark spots on the depths of transit light curves we refer the reader to Section 3 of Pont et al. (2013). Note, dark starspots on the transit depth will have the opposite effect of the bright regions present at soft X-ray and EUV wavelengths.

### 3.4. Transits Affected by Activity

We quantified the percentage of our simulated light curves that show signatures of stellar activity (where the planet occults an active region) by first simulating activity-free transits using the code developed by Schlawin et al. (2010), which is itself based on the limb-darkened transit code of Mandel & Agol (2002). These transit codes assume that the stellar disk is free from active regions. We computed a limb-brightened, activity-free, model transit for a hot Jupiter with  $R_p/R_* = 0.1$  and impact parameters  $b = 0$  and  $b = -0.3$  (plotted as dashed black lines in Figure 6) to match the input to our simulations. For the UV and optical light curves we simulated limb-darkened, activity-free transits using the code developed by Mandel & Agol (2002).

We then calculated the residuals for each of our simulated solar transits by subtracting the activity-free light curve from

**Table 2**  
Summary of Recovered Values of  $R_p/R_*$  and Fraction of Stellar Activity Impacted Light Curves

Wavelength (Å)	$b = 0$		$b = -0.3$	
	Recovered $R_p/R_*$	Activity Impacted (%)	Recovered $R_p/R_*$	Activity Impacted (%)
94	$0.090 \pm 0.014$	14	$0.120 \pm 0.026$	69
131	$0.089 \pm 0.012$	10	$0.119 \pm 0.020$	69
171	$0.093 \pm 0.010$	05	$0.112 \pm 0.015$	40
193	$0.092 \pm 0.012$	04	$0.118 \pm 0.017$	48
211	$0.090 \pm 0.017$	10	$0.123 \pm 0.024$	74
304	$0.094 \pm 0.008$	11	$0.110 \pm 0.016$	39
335	$0.085 \pm 0.020$	19	$0.125 \pm 0.031$	64
1600	$0.113 \pm 0.007$	10	$0.115 \pm 0.009$	24
1700	$0.118 \pm 0.006$	06	$0.117 \pm 0.007$	16
4500	$0.100 \pm 0.001$	03	$0.100 \pm 0.001$	05

**Note.** Column 1 is the wavelength of the observation. Columns 2 and 3 give statistics for the simulations with  $b = 0$ . Columns 4 and 5 show the same statistics but for  $b = -0.3$ . Columns 2 and 4 give the median value of  $R_p/R_*$  and associated variability (derived from the difference between the 90th and 10th percentiles of the histograms shown in Figure 7). Columns 3 and 5 give the percentage of the light curves where stellar activity caused a detectable deviation from the model, activity free light curves (see Section 3.4 for details).

each simulated light curve to compute the residual flux and searched for deviations in the residuals caused by the planet occulting an active region. For the X-ray and UV transits, when the planet occults a bright active region a negative dip is registered in the light curve. We therefore searched the residuals for such dips. We conservatively classified a dip as being detectable if its residual flux value was three times larger than the  $1-\sigma$  uncertainty in the light curves of Poppenhaeger et al. (2013), i.e., if the residuals contained a value larger than 0.018 times normalized flux.

When the planet occults an active region in the optical a positive bump is registered in the light curve. Guided by the measured uncertainties of Sanchis-Ojeda & Winn (2011) we classified a bump as being detectable if its residual flux value was larger than 0.001 times the normalized flux, making it detectable by *Kepler*.

Columns 3 and 5 of Table 2 give the fraction of light curves that show detectable signatures of the planet occulting active regions as a function of impact parameter (as defined by the criteria above). The fraction of affected light curves is heavily dependent on the wavelength and the geometry of the transit chord with respect to the activity belts, with  $\sim 15\%$  of the 94 Å–335 Å transits where  $b = 0$ , exhibiting detectable signatures of active region occultation. This fraction increases to  $\sim 70\%$  when the planet transits over the activity belts ( $b = -0.3$ ). 10%–25% of FUV light curves exhibit detectable dips caused by stellar activity depending on the orbital path of the planet with respect to the activity belts on the stellar surface. Only  $\sim 5\%$  of the optical light curves showed detectable bumps where the planet had transited over a dark sunspot, consistent with the findings of Llama et al. (2012). Since these bumps are localized features in the light curve they can be accounted for when computing  $R_p/R_*$ .

More active stars will have a much larger fraction of the stellar surface covered with active regions, making the likelihood of the planet occulting an active region higher. This suggests that our findings are likely to serve as lower limits on the fraction of affected light curves for active stars. If these dips caused by the planet occulting active regions at short wavelengths are not accounted for when fitting transit models then an inflated value of  $R_p/R_*$  will be found. Given the current time sampling and sensitivity of high energy transits it

is very difficult to isolate individual bumps in the light curve. This will be discussed further in Section 4.

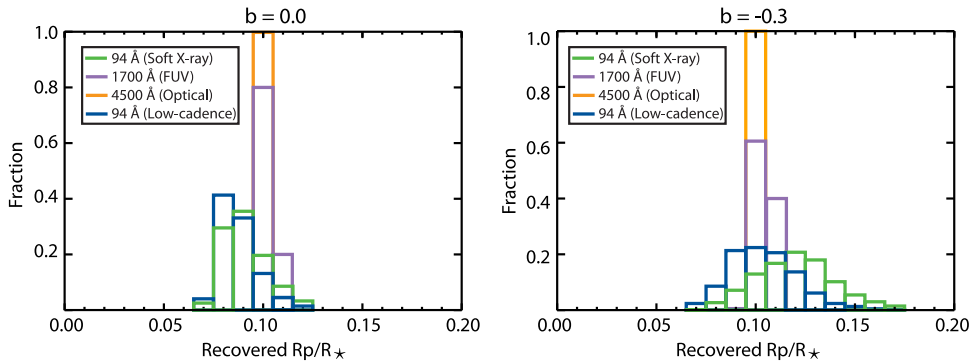
### 3.5. Recovering $R_p/R_*$ as a Function of Wavelength

We also recovered the radius ratio,  $R_p/R_*$  to investigate how stellar activity impacts this measurement for both the limb-darkened and limb-brightened transits. To recover  $R_p/R_*$  from the limb-brightened light curves we again used the full transit model from Schlawin et al. (2010) to produce transit light curves with varying values of  $R_p/R_*$  to find the best fitting limb-brightened model transit. In the FUV and optical, we used the full transit model of Mandel & Agol (2002) with varying values of  $R_p/R_*$  to find the best fitting transit. We note that in the optical it is relatively straightforward to exclude regions of the light curve where the planet has occulted a dark starspot; however, at short wavelengths it is non-trivial to determine which parts of the light curve have been affected by activity and so in the soft X-ray and UV we fit the entire light curve.

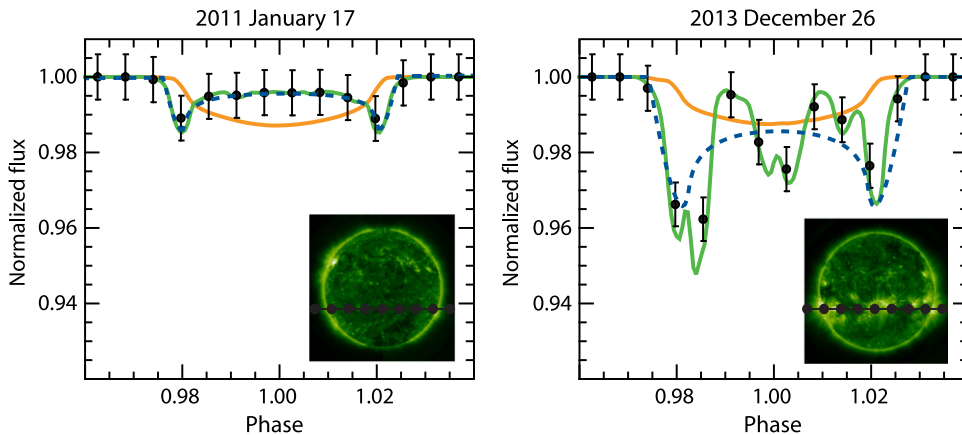
Figure 7 shows histograms of the recovered values of  $R_p/R_*$  as a function of wavelength and impact parameter for the 94 Å, 1700 Å, and 4500 Å transits. Columns 2 and 4 of Table 2 give summary statistics of our recovered values of  $R_p/R_*$  for all the wavelengths. We recovered the input value of  $R_p/R_* = 0.1$  from all of the optical light curves. The mean recovered value of  $R_p/R_*$  in the FUV was  $\sim 20\%$  larger than the optical value, which was caused by the active regions appearing as extended, bright regions in the FUV rather than relatively confined, dark regions in the optical. Observations and analysis of HD 209458 have shown that the UV (3000–3900 Å) transit depth is some 0.030% deeper than in the optical (4500–5500 Å) (Ballester et al. 2007; Lecavelier Des Etangs et al. 2008; Sing et al. 2008). Lecavelier Des Etangs et al. (2008) attribute this additional absorption to Rayleigh scattering in the atmosphere of the planet. For such small changes in transit depth it is therefore imperative that the effects of unocculted active regions (which can also change the transit depth) are accounted for in UV transit light curve analysis.

There was a much wider spread in the recovered radius values at the shortest wavelengths. The radius of the planet was underestimated by up to 25% in the light curves where the planet did not transit over the activity belts ( $b = 0$ ). This





**Figure 7.** Histograms displaying the recovered values of  $R_p/R_*$  (see Section 3.5 for more details) for the 94 Å (green), 1700 Å (purple), and 4500 Å (orange) simulated light curves. We always recover the input value of  $R_p/R_* = 0.1$  from the optical light curves. For the FUV light curves we find the mean value of  $R_p/R_*$  to be larger than the optical value due to active regions appearing as extended bright regions. For the high energy transits (94–335 Å) we find the values of  $R_p/R_*$  to be more variable. The light curves where the planet did not transit over the activity belts ( $b = 0$ ) are affected by unocculted active regions which can result in an underestimate in the recovered value of  $R_p/R_*$  of up to 20%. When the planet transits over the activity belts ( $b = -0.3$ ) these light curves are much deeper, resulting in an overestimate in the recovered values of  $R_p/R_*$  of up to 50%. The blue histogram is the recovered  $R_p/R_*$  when we rebin our 94 Å light curves to a lower cadence (see Section 4).



**Figure 8.** Optical light curve (orange) and 94 Å (green) for nearly quiescent (left) and activity impacted (right) cases. The best fit transit light curve to the X-ray light curve is shown as the dashed blue line. In the lower left of each panel is the corresponding 94 Å image. The black points are the result of rebinning the 94 Å light curve and adding a similar level of noise to the levels in the observations of Poppenhaeger et al. (2013). We find that the maximum depth of the 94 Å low-cadence light curves is typically shallower than for the high-cadence light curves; however, fewer data points make it more challenging to distinguish between an increased transit being caused by stellar activity or by an extended planetary atmosphere.

underestimate is due to a shallower transit caused by the presence of unocculted bright regions on the stellar disk. When the planet did transit over the activity belts ( $b = -0.3$ ), the recovered value of  $R_p/R_*$  was found to be overestimated by up to 50%, which was caused by the planet transiting over bright regions, resulting in a deeper transit. This can be seen in Figure 8 where we have plotted the best fit X-ray light curve (dashed blue line) for two light curves. Again, for more active stars these values will serve as lower limits.

#### 4. IMPLICATIONS FOR X-RAY TRANSITS

X-ray (1–63 Å) transit observations of HD 189733b have revealed a transit depth up to 4.8 times deeper than the optical transit depth which has been attributed to the planet having an extended atmosphere (Poppenhaeger et al. 2013). These X-ray light curves have a mid-transit depth shallower than the depth in the optical. In our simulated short wavelength (94–335 Å) transits, where  $R_p/R_*$  is kept constant, only those light curves unaffected by stellar activity have mid-transit depths shallower than the optical depth (see the right panel in Figure 2). This suggests that either HD 189733b may indeed have an extended

atmosphere in X-rays or during those observations, the planet was transiting over X-ray-bright regions that covered a large fraction of the transit path. Both of these scenarios would result in an X-ray mid-transit depth deeper than the corresponding optical transit depth. This second scenario is not unreasonable given that HD 189733 is a more active star than the Sun. Indeed, Zeeman–Doppler imaging of HD 189733 has revealed the star has a large-scale magnetic field strength 10 times stronger than that of the Sun (Fares et al. 2010).

More X-ray transits will therefore help determine which scenario is correct. We find that for large active regions, a bump in the optical light curve coincides with large dips in the high energy light curves, suggesting that optical light curves could potentially be used to rule out stellar activity effects on deep X-ray light curves. Therefore, simultaneous optical light curves will also aid interpretation.

Due to the difficulty in obtaining X-ray observations, the light curves of Poppenhaeger et al. (2013) are at a lower cadence than those simulated here. In our high-cadence observations the signatures of the planet transiting over an active region can be resolved as localized dips in the light curve; however, this may not always be the case for lower



cadence observations. The black points in Figure 8 show the effects of rebinning two 94 Å light curves to the same cadence of the X-ray transits of Poppenhaeger et al. (2013) and adding similar-sized error bars. These rebinned light curves make it much more difficult to detect the signatures of the planet transiting over active regions. The right panel of Figure 8 shows how the localized dips in the high cadence light curve caused by the planet occulting an active region are less defined at lower cadence. If the transit chord intersected larger (or more) active regions than in this transit then the depth of the transit would be lower than the optical light curve for the entirety of the transit. This may lead to the false conclusion that the planet has an inflated atmosphere in X-rays.

To quantify the effects of using lower cadence observations we repeated the analysis carried out in Section 3.5 and derived the value of  $R_p/R_*$  using the low cadence 94 Å light curves. The dark blue histogram in Figure 5 gives the results for this analysis. We find a reasonable agreement between the recovered values of  $R_p/R_*$  for the light curves when the planet is not occulting the activity belts ( $b = 0$ ). When the planet is occulting the activity belts ( $b = -0.3$ ), the low cadence light curves produce smaller values of  $R_p/R_*$  when compared to the full cadence observations. This is caused by the active regions being localized regions, thus integrating for longer during the observations reduces their impact on the light curve; however, the disadvantage of having fewer data points is that it is less obvious whether the increased depth in the light curve is caused by the planet or stellar activity.

## 5. CONCLUSIONS

In this paper we used resolved images of the solar disk to simulate transit light curves at multiple wavelengths ranging from soft X-rays/EUV to optical. By simulating a transiting planet with two impact parameters we investigated the importance of both occulted and unocculted active regions on transit light curves.

At short wavelengths, up to 70% of the simulated transit light curves where the planet occulted the activity belts on the Sun showed signatures of stellar activity that would result in the derived value of  $R_p/R_*$  deviating from the real value. This value decreased to  $\sim 20\%$  for the light curves when the planet's orbital path did not occult the activity belts. At longer wavelengths, the effects of stellar activity were not as prevalent, with 20% of our simulated FUV light curves where the planet occulted the activity belts showing signatures of stellar activity. In the optical, we found that for stars with activity levels similar to the Sun, only 5% of light curves will have bumps caused by the planet transiting over starspots agreeing with the findings of Llama et al. (2012).

We also investigated the effects stellar activity would have on recovering the radius ratio of the planet and the host star,  $R_p/R_*$ . If the planet transits over the activity belts on the star, then the mean value of the planet's radius as derived from soft X-ray and EUV light curves can be overestimated by 20%; however, during times of high activity the radius can be overestimated by up to 50%. When the planet did not occult the activity belts, the effects of unocculted active regions resulted in the mean value of the planet's radius at short wavelengths being underestimated by 10%. Again, during periods of high activity this underestimate increased to  $\sim 25\%$ .

The effects were similar in the FUV for which the radius of the planet could be overestimated by  $\sim 15\%$ . In the optical we

recovered the input value of  $R_p/R_* = 0.1$  in all our simulated light curves since bumps in the light curve can be accounted for when deriving  $R_p/R_*$ .

We compared our light curves to other transit observations at short wavelengths. We found that transits at short wavelengths showed hints of an extended duration than the corresponding optical transits. This is due to these observations being sensitive to light from both the photosphere and extended corona, suggesting high-energy transits could be used to study the density and structure of stellar coronae. Unlike the limb-brightened transits, the FUV (1600 Å and 1700 Å) light curves exhibited no signatures of an early ingress when compared to the optical. This suggests that the observed early ingress in the near-UV (2800 Å) transit of WASP-12 is unlikely to be caused by stellar activity alone; rather, it strengthens the idea that WASP-12 b has additional absorbing material surrounding the exosphere of the planet.

By rebinning our high-cadence soft X-ray (94 Å) light curves to a similar cadence as the X-ray data of HD 189733b taken by Poppenhaeger et al. (2013), we demonstrated that it is difficult to distinguish between a deeper X-ray transit being caused by stellar activity or by an extended planetary atmosphere. Higher time sampling will make identifying parts of the light curve where the planet has occulted an active region easier. Simultaneous optical data may also aid in revealing whether the planet is transiting over active regions and help distinguish between these two scenarios.

We conclude that it is very important that when attempting to determine planetary properties using transits at high energy wavelengths, multiple observations are obtained with long baselines, and that simultaneous optical data (both during the transit and out of transit) may help decouple planetary properties from stellar variability.

This work is supported by NASA Origins of the Solar System grant No. NNX13AH79G. The authors thank A.A. Vidotto (Geneva) & L. Fletcher (Glasgow) for providing helpful comments and suggestions. We would also like to thank the anonymous referee for feedback and thought-provoking questions on the manuscript.

## REFERENCES

- Ballester, G. E., Sing, D. K., & Herbert, F. 2007, *Natur*, 445, 511  
 Ben-Jaffel, L., & Ballester, G. E. 2013, *A&A*, 553, A52  
 Berdyugina, S. V. 2005, *LRSF*, 2, 8  
 Ehrenreich, D., Bourrier, V., Bonfils, X., et al. 2012, *A&A*, 547, A18  
 Fares, R., Donati, J.-F., Moutou, C., et al. 2010, *MRNAS*, 406, 409  
 Fossati, L., Haswell, C. A., Froning, C. S., et al. 2010, *ApJL*, 714, L222  
 Fröhlich, C. 2000, *SSRv*, 94, 15  
 Fröhlich, C., & Lean, J. 1988, *GeoRL*, 25, 4377  
 Gibb, G. P. S., Jardine, M. M., & Mackay, D. H. 2014, *MRNAS*, 443, 3251  
 Gibson, N. P., Aigrain, S., Pont, F., et al. 2012, *MRNAS*, 422, 753  
 Gu, P.-G., Lin, D. N. C., & Bodenheimer, P. H. 2003, *ApJ*, 588, 509  
 Haswell, C. A., Fossati, L., Ayres, T., et al. 2012, *ApJ*, 760, 79  
 Hathaway, D. H. 2010, *LRSF*, 7, 1  
 Ibgui, L., Burrows, A., & Spiegel, D. S. 2010, *ApJ*, 713, 751  
 Kulow, J. R., France, K., Linsky, J., & Parke Loyd, R. O. 2014, *ApJ*, 786, 132  
 Lai, D., Helling, C., & van den Heuvel, E. P. J. 2010, *ApJ*, 721, 923  
 Lammer, H., Selsis, F., Ribas, I., et al. 2003, *ApJL*, 598, L121  
 Lecavelier Des Etangs, A., Bourrier, V., Wheatley, P. J., et al. 2012, *A&A*, 543, L4  
 Lecavelier Des Etangs, A., Vidal-Madjar, A., Désert, J.-M., & Sing, D. 2008, *A&A*, 485, 865  
 Lecavelier Des Etangs, A., Vidal-Madjar, A., McConnell, J. C., & brard, H. 2004, *A&A*, 418, L1  
 Li, S.-L., Miller, N., Lin, D. N. C., & Fortney, J. J. 2010, *Natur*, 463, 1054

- Linsky, J. L., Yang, H., France, K., et al. 2010, [ApJ](#), 717, 1291
- Llama, J., Jardine, M., Mackay, D. H., & Fares, R. 2012, [MNRAS](#), 422, L72
- Llama, J., Vidotto, A. A., Jardine, M., et al. 2013, [MNRAS](#), 436, 2179
- Llama, J., Wood, K., Jardine, M., et al. 2011, [MNRAS](#), 416, L41
- Mandel, K., & Agol, E. 2002, [ApJL](#), 580, L171
- Nikolov, N., Sing, D. K., Pont, F., et al. 2013, [MNRAS](#), 437, 46
- Oshagh, M., Santos, N. C., Ehrenreich, D., et al. 2014, [A&A](#), 568, A99
- Pevtsov, A. A., Fisher, G. H., Acton, L. W., et al. 2003, [ApJ](#), 598, 1387
- Pont, F., Sing, D. K., Gibson, N. P., et al. 2013, [MNRAS](#), 432, 2917
- Poppenhaeger, K., Schmitt, J. H. M. M., & Wolk, S. J. 2013, [ApJ](#), 773, 62
- Rabus, M., Alonso, R., Belmonte, J. A., et al. 2009, [A&A](#), 494, 391
- Sanchis-Ojeda, R., & Winn, J. N. 2011, [ApJ](#), 743, 61
- Sanchis-Ojeda, R., Winn, J. N., Marcy, G. W., et al. 2013, [ApJ](#), 775, 54
- Schlawin, E., Agol, E., Walkowicz, L. M., Covey, K., & Lloyd, J. P. 2010, [ApJL](#), 722, L75
- Sing, D. K., Pont, F., Aigrain, S., et al. 2011, [MNRAS](#), 416, 1443
- Sing, D. K., Vidal-Madjar, A., Désert, J.-M., Lecavelier Des Etangs, A., & Ballester, G. 2008, [ApJ](#), 686, 658
- Stevenson, K. B., Bean, J. L., Seifahrt, A., et al. 2014, [AJ](#), 147, 161
- Vidal-Madjar, A., des Etangs, A. L., Désert, J.-M., et al. 2003, [Natur](#), 422, 143
- Vidotto, A. A., Jardine, M., & Helling, C. 2010, [ApJL](#), 722, L168
- Winn, J. N., Johnson, J. A., Howard, A. W., et al. 2010, [ApJL](#), 723, L223