

Shape asymmetry: a morphological indicator for automatic detection of galaxies in the post-coalescence merger stages

M. M. Pawlik,¹★ V. Wild,^{1,2} C. J. Walcher,³ P. H. Johansson,⁴ C. Villforth,¹
K. Rowlands,¹ J. Mendez-Abreu¹ and T. Hewlett¹

¹*School of Physics and Astronomy, University of St Andrews (SUPA), North Haugh, St Andrews KY16 9SS, UK*

²*Institute for Astronomy, University of Edinburgh (SUPA), Royal Observatory, Blackford Hill, Edinburgh EH9 3HJ, UK*

³*Leibniz-Institut für Astrophysik Potsdam (AIP), An der Sternwarte 16, D-14482 Potsdam, Germany*

⁴*Department of Physics, University of Helsinki, Gustaf Hällströmin katu 2a, FI-00014 Helsinki, Finland*

Accepted 2015 December 7. Received 2015 November 27; in original form 2015 July 29

ABSTRACT

We present a new morphological indicator designed for automated recognition of galaxies with faint asymmetric tidal features suggestive of an ongoing or past merger. We use the new indicator, together with pre-existing diagnostics of galaxy structure to study the role of galaxy mergers in inducing (post-) starburst spectral signatures in local galaxies, and investigate whether (post-) starburst galaxies play a role in the build-up of the ‘red sequence’. Our morphological and structural analysis of an evolutionary sample of 335 (post-) starburst galaxies in the Sloan Digital Sky Survey DR7 with starburst ages $0 < t_{\text{SB}} < 0.6$ Gyr, shows that 45 per cent of galaxies with young starbursts ($t_{\text{SB}} < 0.1$ Gyr) show signatures of an ongoing or past merger. This fraction declines with starburst age, and we find a good agreement between automated and visual classifications. The majority of the oldest (post-) starburst galaxies in our sample ($t_{\text{SB}} \sim 0.6$ Gyr) have structural properties characteristic of early-type discs and are not as highly concentrated as the fully quenched galaxies commonly found on the ‘red sequence’ in the present day Universe. This suggests that, if (post-) starburst galaxies are a transition phase between active star-formation and quiescence, they do not attain the structure of presently quenched galaxies within the first 0.6 Gyr after the starburst.

Key words: galaxies: evolution – galaxies: interactions – galaxies: starburst – galaxies: structure.

1 INTRODUCTION

The contrast between ‘blue-cloud’ and ‘red-sequence’ galaxies has long been known and examined in many studies both in the local Universe (e.g. Strateva et al. 2001; Kauffmann et al. 2003b; Baldry et al. 2006) and at higher redshifts (e.g. Bell et al. 2004; Bundy et al. 2005). The star-forming blue-cloud galaxies tend to have late-type morphologies, while the quiescent systems populating the red sequence are predominantly early-type. The origin of this bimodality remains unclear and has become one of the major conundrums in the field of extragalactic astronomy. As the stellar mass contained within the red sequence has doubled since $z \sim 1$, contrary to that of the blue cloud, it is thought that blue galaxies can migrate to the red sequence once their star formation has quenched (Bell et al. 2004; Arnouts et al. 2007; Faber et al. 2007). While several mechanisms responsible for the star-formation quenching have been studied (Gunn & Gott 1972; Balogh & Morris 2000; Birnboim

& Dekel 2003; Di Matteo, Springel & Hernquist 2005; Cox et al. 2006; Hopkins et al. 2007; Martig et al. 2009; Johansson, Naab & Ostriker 2012), the emerging consensus is that the transformation between star-forming and quiescent galaxies can occur through either a fast or a slow channel. The slow mode involves the secular evolution of galaxies, without the presence of external triggering mechanisms, where star formation fades gradually as the gas supply is used up (Noeske et al. 2007; Cortese & Hughes 2009; Schawinski et al. 2014). This work’s focus is on the fast route, supported by the scarcity of galaxies in the ‘green valley’, stretching between the blue cloud and the red sequence in the colour–magnitude diagrams. Fast quenching is commonly associated with an escalated gas consumption during a merger-induced starburst, followed by removal of the remaining gas supply by subsequent stellar and/or AGN feedback (Sanders et al. 1988; Hopkins et al. 2006; Faber et al. 2007; Johansson, Naab & Burkert 2009; Yesuf et al. 2014). However, a recent study of local galaxies with signatures of a past starburst by Rowlands et al. (2015) has shown that they preserve substantial gas reservoirs which can potentially fuel star formation for an extended period of time, making the ‘fast’ nature of this quenching scenario

* E-mail: mp84@st-andrews.ac.uk

debatable. Further study of the possible quenching mechanisms is required, and galaxies that show signatures of a recent starburst (post-starburst – PSB – galaxies) as well as those that have undergone a recent merger (post-merger galaxies) may provide a unique insight to this ‘fast’ transition phase between the star-forming and the quiescent mode of galaxy evolution (Tran et al. 2004; Kaviraj et al. 2007).

PSB galaxies (also known as ‘k+a’ galaxies) have spectra featuring unusually strong Balmer lines in absorption – an attribute of A stars. Such features are thought to be a signature of a recent (~ 1 Gyr) truncation following either a short burst (Dressler & Gunn 1983; Nolan, Raychaudhury & Kabán 2007) or normal-mode star formation activity within a galaxy (Poggianti et al. 1999). Distinguishing between the two events requires careful modelling, which shows that very strong Balmer lines are inconsistent with anything other than a recent starburst (Balogh et al. 2005; Wild et al. 2007; von der Linden et al. 2010). First discovered over 30 yr ago (Dressler & Gunn 1983), PSB galaxies are found in various regions of the Universe: locally, they are rare and populate mainly the field and poor groups (Zabludoff et al. 1996; Blake et al. 2004) but their incidence increases at higher redshifts, where they seem to lie predominantly in clusters (e.g. Dressler et al. 1999; Ma et al. 2008; Poggianti et al. 2009; but see Balogh et al. 1999 for a contradictory conclusion). Whether PSB galaxies are a link between the star-forming and quiescent phases of galaxy evolution is still an ongoing debate. Results of some studies support this claim: at $0.5 < z < 1$, the mass flux through the PSB phase is comparable to the mass growth of the red sequence (Wild et al. 2009), and quenched PSB galaxies tend to be early type (Wong et al. 2012; Mendel et al. 2013). However, other studies suggest the opposite: the incidence of PSB galaxies at $0.5 < z < 1$ is inconsistent with a major channel for the red-sequence growth in clusters (de Lucia et al. 2009; Dressler et al. 2013), and the remaining gas reservoirs up to 0.5–1 Gyr after the starburst suggest a non-quenched state for local PSB galaxies (Zwaan et al. 2013; Rowlands et al. 2015). The contradictory conclusions of the different studies may partially come from their differing selection techniques used to identify PSB signatures in galaxies, as well as the different environments and redshifts that each study focuses on. Clearly further study of this interesting class of galaxies is warranted.

The origin of PSB signatures in galaxies has not yet been constrained. A possible mechanism, favoured by numerical simulations (e.g. Barnes & Hernquist 1991, 1996; Bekki, Shioya & Couch 2001; Bekki et al. 2005; Hopkins et al. 2006, 2008; Snyder et al. 2011), is gas-rich major mergers, which can induce starbursts strong enough to rapidly consume a significant amount of the galaxy’s gas reservoir (Di Matteo et al. 2005), and can transform late-type galaxies into early-types both structurally and kinematically (Toomre & Toomre 1972; Barnes 1988; Naab & Burkert 2003). Mergers of galaxies have been observed for over 50 yr (Vorontsov-Velyaminov 1959; Arp 1966; Schweizer 1982; Schweizer, Whitmore & Rubin 1983; Ellison et al. 2013) and their connection with PSB spectral signatures in galaxies has been investigated in some previous studies but with no definite conclusion so far. The fact that many local PSB galaxies lie in the field and poor groups suggests that they could be merger remnants (Zabludoff et al. 1996; Quintero et al. 2003; Balogh et al. 2005), and the signs of morphological disturbance found in many PSB galaxies provide strong evidence supporting this claim (Zabludoff et al. 1996; Blake et al. 2004; Goto 2005; Yang et al. 2008). None the less, results reported by some other studies suggest otherwise; for example, not all PSB galaxies show signs of an interaction (Zabludoff et al. 1996; Blake et al. 2004; Yang

et al. 2008) and the redshift evolution of the PSB number density found by Wild et al. (2009) is ~ 100 times that of the major-merger rate estimated by de Ravel et al. (2009). Furthermore, Dressler et al. (2013) argue that the relative incidence of starburst, PSB, passive and star-forming galaxies found in five rich clusters suggests that less disruptive events, like minor mergers and accretion, are at play.

The role of galaxy mergers in quenching of star formation in galaxies is not well understood and it remains challenging to constrain due to the large variability of merger signatures and the resulting difficulties in defining robust sample selection criteria. Common methods include selection of close pairs (i.e. pre-merger stages; Zepf & Koo 1989; Patton et al. 2002) or probing visual merger signatures in galactic structure. The latter approach can be done by means of either visual inspection or quantitative approach involving; for example, rotational asymmetry (e.g. Rix & Zaritsky 1995; Shade et al. 1995; Abraham et al. 1996; Conselice, Bershadsky & Jangren 2000; Villforth et al. 2014), lopsidedness (Reichard et al. 2008, 2009), the Gini- M_{20} parameter space (e.g. Lotz, Primack & Madau 2004) or the recently introduced median filtering of high-resolution images for detection of double nuclei (Lackner et al. 2014). Such measures are useful for identifying galaxies in early stages of a merger, particularly prior to the coalescence of the galaxy nuclei, but they are less suitable for tracing low surface-brightness post-merger signatures. While visual classification offers great reliability and have recently been extended to large galaxy samples (The Galaxy Zoo Project, Lintott et al. 2008, 2011; see Darg et al. 2010 for merger morphology), the need for a more efficient automated selection of galaxies in post-coalescence stages of a merger increases in today’s era of extensive surveys. An automated approach also provides a more quantitative and easily reproducible description of galaxy morphology than visual classification.

In this paper we introduce a new morphological indicator designed to probe the asymmetric structures in the outskirts of galaxies in the late stages of a merger. Through comparison with visual classification of galaxy images, we show that the indicator performs remarkably well in detecting faint signatures of tidal disruption in starburst and PSB galaxies. We use the new measure to identify post-merger (or, in few cases, ongoing-merger) candidates in a sample of 335 local galaxies with bulges, with strongest starburst and PSB signatures in the Sloan Digital Sky Survey (SDSS; Abazajian et al. 2009), selected using a sophisticated technique introduced by Wild et al. (2007), and to investigate the evolution of the morphological disturbance in these galaxies as a function of the starburst age. We also use several standard measures found in literature to characterize the structure of galaxies evolving through the starburst and PSB phase and compare them with those characteristic of galaxies residing on the present-day red sequence.

This paper is structured as follows: Section 2 contains a description of samples and their selection criteria; Section 3 – the methodology; Section 4 – calibration and testing; Section 5 – the results; Section 6 – a discussion; Section 7 – the summary of conclusions. We adopt a cosmology with $\Omega_m = 0.30$, $\Omega_\Lambda = 0.70$ and $H_0 = 70 \text{ km s}^{-1} \text{ Mpc}^{-1}$.

2 SAMPLE SELECTION

The following samples of galaxies were selected from the SDSS DR7 spectroscopic catalogue.

2.1 The test sample

The test sample consists of 70 local galaxies at $0.01 < z < 0.07$ with SDSS Petrosian magnitude within the range: $14.5 < m_r < 17.7$. The sample was selected to represent systems with various degrees of morphological disturbance, which was determined based on visual inspection of the galaxy images. To find galaxies with disrupted morphologies, we pre-selected galaxies with spectroscopic starburst and PSB signatures, as further described in Section 2.2. We then visually examined their images in r band as well as the SDSS false colour images for the presence of morphological disturbance and tidal features, pointing to a past (and in a few cases, still ongoing) merger event.¹ The final sample of test galaxies (Figs A1 and A2) contains the following: galaxies with highly disrupted morphologies, tidal features indicating a past major merger (images 1–20); galaxies with moderate morphological disturbance, with no prominent tidal features but slight deviations from regular appearance (images 21–30); galaxies with no signs of morphological disturbance (images 31–40). The notable fraction of ongoing mergers in the sample is a consequence of the selection criteria chosen for purposes of the method testing. The test sample is not representative of the entire population of local PSB galaxies. Finally, we include in the test sample a control subset of 30 normal galaxies (selected using the above constraints on redshift and magnitude) classified as early- (images 41–50, 61–65) and late-types (images 51–60, 66–70) based on the SDSS $fracDev$ parameter with threshold values of 0.99 and 0.1, respectively. The $fracDev$ parameter describes the fraction of the total galaxy light fit by the de Vaucouleurs profile (with the total light being represented by the model magnitude, computed from a linear combination of de Vaucouleurs and exponential fits to galaxy light profiles). We split the normal galaxies based on their inclination, into face-on ($b/a > 0.5$, images 41–60) and edge-on ($b/a < 0.5$, images 61–70) subsets.

2.2 The (post-) starburst sample

In this work we are interested in the whole sequence from starburst to quiescence, and wish to observe the decline in post-merger features that might be expected following the starburst event. We therefore select an evolutionary sample of galaxies at different stages of the starburst/post-starburst phase, which we collectively refer to as the ‘(post-) starburst’ or ‘SB/PSB’ sample. The sample consists of 400 local galaxies which have undergone a strong recent starburst selected from a parent sample of 70 000 galaxies with $0.01 < z < 0.07$ and spectral signal-to-noise ratio (SNR) per pixel greater than 8 in the g band, from the spectroscopic SDSS DR7 catalogue. The galaxies within the parent sample were selected to be bulge dominated, with stellar surface mass density $\mu > 3 \times 10^8 M_{\odot} \text{ kpc}^{-2}$. This is similar to imposing a stellar mass limit of $10^{10} M_{\odot}$ (Kauffmann et al. 2003b). Our reason for using this sample is that it has already been studied in Wild, Heckman & Charlot (2010) to measure a ~ 200 Myr offset between starburst and accretion on to the central supermassive black hole, and in Rowlands et al. (2015) to investigate the evolution of their dust and gas contents. The disadvantage of this pre-selection on stellar mass surface density is

¹ Throughout the text, we refer to both ongoing and past merger events collectively as past merger events or ‘post-mergers’.

² $\mu = M_*/(2\pi r^2)$ with r being the physical size in kpc of the radius which contains 50 per cent of the SDSS z -band Petrosian flux and the stellar mass measured from the five-band SDSS photometry (J. Brinchmann, <http://www.mpa-garching.mpg.de/SDSS>).

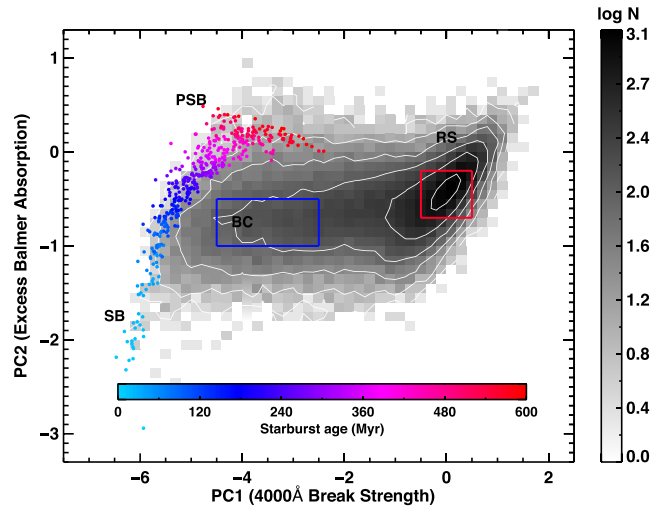


Figure 1. Distribution of the 70 000 local bulge-galaxies selected from SDSS DR7 in the PC1–PC2 spectral index space (grey-scale). Galaxies with the strongest (post-) starburst signatures in the sample are overplotted in colour. Different regions of the spectral index space contain galaxies with different recent star formation histories. These are indicated by the acronyms: SB, PSB, RS and BC, and correspond to starburst, post-starburst, red sequence and blue cloud, respectively. The blue and red boxes mark the region used for selection of the control sample of blue-cloud and red-sequence galaxies, respectively.

that galaxies with bulges may undergo stronger starbursts due to gravitational effects, and therefore not be representative of the full merging galaxy population. We intend on extending our analysis to further samples in later work.

Fig. 1 shows the distribution of two spectral indices that describe the shape of the spectrum (4000 Å break and Balmer break strength) and Balmer absorption line strength for all 70 000 bulge-dominated galaxies. These spectral features constrain the recent star formation history of the galaxy (Kauffmann et al. 2003a). The indices are computed within the spectral region 3175–4150 Å using a principal component analysis (PCA), which identifies and groups together features that vary simultaneously as the balance of stars in a spectrum changes (Wild et al. 2007). By combining multiple Balmer absorption lines together with information from the shape of the stellar continuum the PCA provides a much higher SNR spectral index to identify an excess of A stars compared to the traditionally used $H\beta$ or $H\delta$ absorption lines. In Fig. 1, a large majority of the galaxies are found on the right-hand side of the plot with strong 4000 Å break (PC1), characteristic of the quiescent red-sequence galaxies. Lower values of PC1 point to ongoing star formation, therefore the less numerous blue-cloud galaxies appear on the left-hand side of the plot. Starburst galaxies undergo brief episodes of enhanced star formation which reflect in extremely low values of PC1 as well as PC2 (deficit of Balmer absorption and weak 4000 Å breaks), due to their stellar populations being dominated by short-lived O/B stars. As the dominant stellar populations within these galaxies change with time elapsed from the starburst event, the galaxy moves to the PSB phase, and the Balmer absorption features will increase in strength relative to the 4000 Å break (Dressler & Gunn 1983; Couch & Sharples 1987). The peak at highest PC2 values is where we find old PSB galaxies with dominant populations of A stars and starburst age (t_{SB}) ~ 1 Gyr.

To select an evolutionary sample of (post-) starburst galaxies, we selected galaxies from the extreme left of the PC1/2 distribution.

These have undergone the strongest recent starburst in the sample, and therefore exhibit the most extreme spectral features. The starburst ages of those galaxies were estimated using Bayesian fitting of Bruzual & Charlot (2003) stellar population synthesis models to the spectral indices. First, starburst ages for all galaxies with $PC1 < -4$ or $PC2 > -0.5$ were estimated from the median of the posterior distribution, assuming a star formation history comprising an old stellar population and recent starburst. To identify a statistically complete sample of the strongest (post-) starburst galaxies we selected galaxies with the lowest PC1 value, such that we have 20 galaxies per 30-Myr time interval, up to a starburst age of 600 Myr. The reason for this age restriction is that, at older ages, there is a degeneracy between starburst age and burst strength using PC1 and PC2 alone (see Wild et al. 2007). The final sample of 400 SB/PSB galaxies are plotted in Fig. 1, with starburst age coded by colour.

The key difference between this selection method and those used in previous studies of PSB galaxies is that we select purely on stellar continuum features and do not remove galaxies with identifiable nebular emission lines. Traditionally galaxies are removed from the PSB samples if either $H\alpha$ or $[O\ II]$ is visible, thereby ensuring that star formation has completely shut off. We did not do this for two key reasons: (i) the traditional method actively selects against galaxies that host narrow line AGN, which are more prevalent in PSB galaxies than galaxies with other star formation histories, resulting in incomplete samples (Yan et al. 2006; Wild et al. 2007, 2009); (ii) the traditional method only selects old PSB galaxies, as starbursts themselves are not instantaneous, but rather have a decay time of ~ 0.3 Gyr (Barton, Geller & Kenyon 2000; Freedman Woods et al. 2010; Hopkins & Hernquist 2010; Wild et al. 2010). For further details of the sample selection, see Wild et al. (2010) and Rowlands et al. (2015).

Prior to the analysis, the final sample was reduced to 335 galaxies. This was done after visual inspection of the galaxy images (SDSS r band) which revealed that in the case of 65 galaxies, the presence of bright field stars in the images could contaminate the measurements of the structural parameters. As a result, those galaxies were discarded. This does not affect the statistical property of our sample as the discarded galaxies were distributed evenly throughout all starburst age bins.

2.3 The control sample of star-forming and quiescent galaxies

In order to relate the structure and morphology of galaxies evolving through the SB/PSB phase to that of both star-forming and passively evolving galaxies, we also selected control samples of 49 and 53 galaxies from the blue-cloud and red-sequence regions of the PC1–PC2 spectral index space, respectively. For that purpose, we used the same bulge-dominated base sample as during the selection of the SB/PSB galaxies. The control samples contain random selections of galaxies from the regions centred on the most populated parts of the blue cloud and the red sequence (marked by the blue/red box in Fig. 1). To eliminate potential biases due to varying galaxy structure with the stellar mass within both the blue cloud and the red sequence, we ensured that the stellar mass distributions of the galaxies within our control samples match that of the oldest ($0.5 < t_{SB} < 0.6$ Gyr) SB/PSB galaxies in our main galaxy sample.

3 METHODOLOGY

To characterize the structure of the galaxies, we applied a range of automated structural measures to the sky-subtracted r -band images

of the (post-) starburst galaxies. We first defined a binary ‘detection mask’ containing the pixels to be included in the structure measurements (Section 3.1). Then, we computed the standard measures of galaxy structure used in the literature (Section 3.2) as well as a new measure of morphology introduced in this work, designed for detecting asymmetric morphological features characteristic of post-mergers (Section 3.3).

3.1 Binary detection mask

To create the binary detection mask we employed an 8-connected structure detection algorithm, with 8-connected neighbours defined as all pixels touching one of the edges or corners of the central pixel. The algorithm searches for such neighbouring pixels with intensities above a threshold level defined as a function of the background sky level and its standard deviation. The algorithm is specifically designed to identify faint features in the outskirts of galaxies. To enhance the detectability of such features without significantly lowering the detection threshold and potentially dropping to the noise level, we passed the images through a 3×3 running average (mean) filter prior to the detection process. This reduced the noise in the images by not only amplifying the signal from the regions with low surface-brightness but also diminishing the pixelation effect in those regions where individual pixels are too faint to be detected. Then, starting from the central pixel as given by the SDSS position, the binary detection mask was built by accepting all pixels that are 8-connected to previously accepted pixels and have intensities above the chosen threshold. After some experimentation we found the optimal threshold for a robust detection of faint tidal features is one standard deviation above the sky background level. For the SDSS r -band images of the SB/PSB sample, this corresponds to a mean limiting surface brightness of $24.7 \text{ mag arcsec}^{-2}$. In Fig. 2 we show examples of detection masks computed for SB/PSB galaxies with different levels of morphological disturbance, as classified by visual inspection of the SDSS r -band images (the exact criteria of the visual classification are explained in detail in Section 5.1). In the case of an ongoing merger, with double nuclei joined by a bridge (see images 7, 9, 13 and 17 in Fig. A1), the detection mask will include both components of the merging system.

The computation of the binary detection mask relies on a good estimate of the sky background level in the images. For a self-contained analysis, we estimated our own sky background levels rather than using SDSS values, although we find the two measurements agree well. We extracted pixels lying within a circular annulus with inner and outer radius of 20 and 40 times the full width at half-maximum of the light profile of each galaxy. This resulted in a large enough area and inner boundary sufficiently far from the central source to ensure a representative measurement of the sky background level (Da Costa 1992; Simard et al. 2011). We estimated the sky background level by the mode of the flux histogram, clipped iteratively at 3σ (Da Costa 1992; Berry & Burnell 2000) until convergence of the mode (typically after a few iterations). We defined the mode as $2.5 \times \text{median} - 1.5 \times \text{mean}$ (Bertin & Arnouts 1996).

From the binary detection masks we estimated the galaxy radius, R_{max} , as the distance between the centre (brightest pixel within the mask) and the most distant pixel from that centre. We find that this definition of galaxy radius is an improvement for our purposes over the commonly used Petrosian radius, R_p (Petrosian 1976; Blanton et al. 2001; Yasuda et al. 2001), in the case of galaxies with significant morphological disturbance. In the second row of Fig. 2, apertures at the new radii (black) are compared to those at twice the

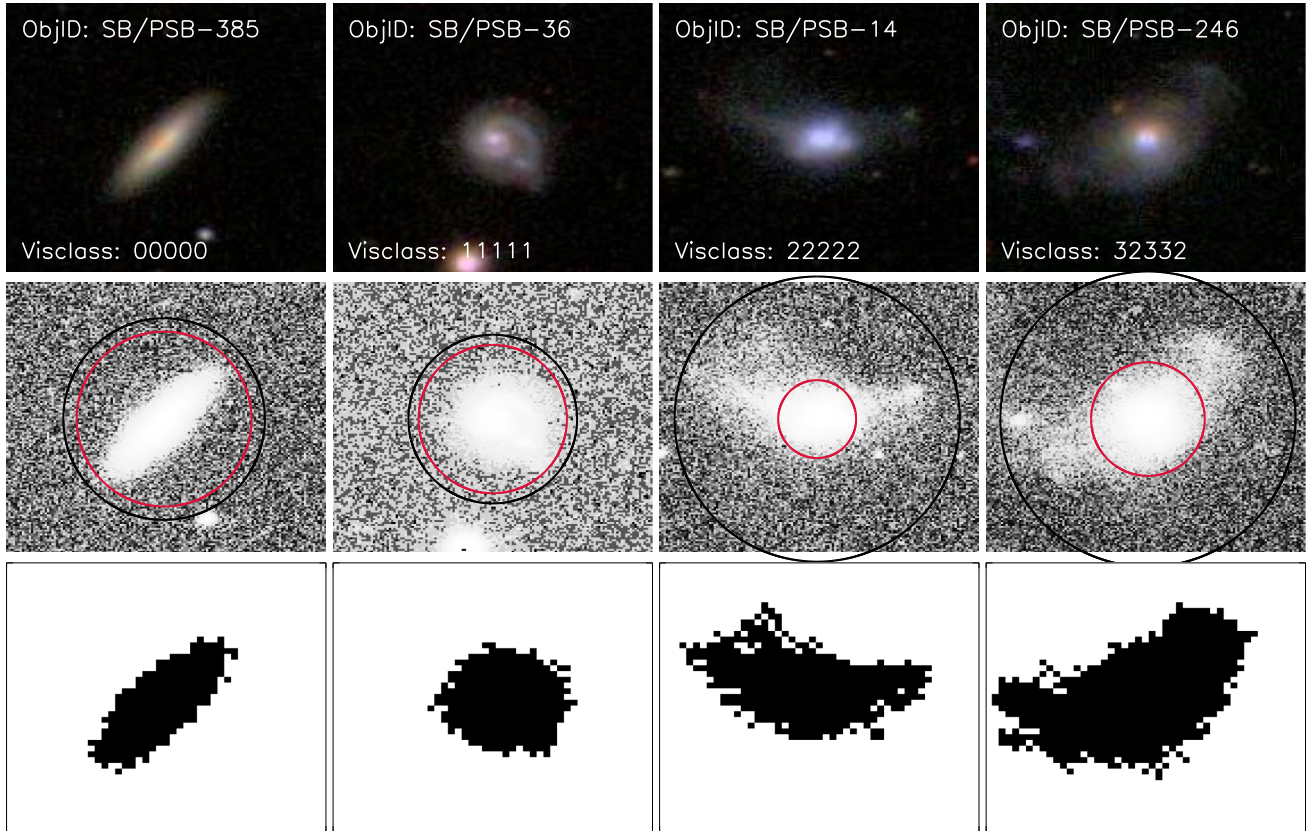


Figure 2. Examples of galaxies in the (post-) starburst sample with different levels of morphological disturbance (from left to right: regular morphology, low/moderate disturbance, major disturbance with elongated features, major disturbance with shell-like features). The horizontal panels show the following: top – the false colour SDSS images with the corresponding visual classifications by five classifiers (described in detail in Section 5.1); middle – the SDSS r -band images with marked aperture sizes defined by the Petrosian radius, $2R_p$ (red), and the radius introduced in Section 3.1, R_{\max} (black); bottom – the corresponding binary detection masks (Section 3.1).

Petrosian radii (red). The latter value is typically used to recover the majority of flux for galaxies with regular morphologies (Blanton et al. 2001). The radii are similar for morphologically undisturbed galaxies, but in the presence of significant morphological disturbance, R_{\max} includes the extended faint structures in the outskirts of galaxies, which can be excluded by $2R_p$. Finally, we recomputed the sky background level within a circular annulus with inner and outer radius of one and two times R_{\max} (Berry & Burnell 2000). This final estimate of the sky background level was subtracted from the images prior to the measurement of the morphological parameters (although it differs from the original one by no more than three digital counts per pixel, we note a drop in the standard deviation by as much as 50 per cent).

3.2 Structural parameters

Below, we list and briefly describe the measures of galaxy structure used in this study.

Sérsic index, n : for each galaxy, we fitted the Sérsic function (Sérsic 1963; Graham & Driver 2005) to its surface brightness profile, extracted by considering the mean flux in pixel-thick concentric circular annuli defined by apertures centred at the brightest pixel of the galaxy image.

$$I(R) = I_e \exp \left\{ -b_n \left[\left(\frac{R}{R_e} \right)^{1/n} - 1 \right] \right\}, \quad (1)$$

where I_e stands for the intensity at the galaxy’s effective radius, R_e , enclosing half of the total galaxy light, and the constant b_n is determined by the Sérsic index, n . During the fitting procedure, the Sérsic index was restricted to fall between 0.5 and 6.0.

Concentration index, C : we computed C (Kent 1985; Abraham et al. 1994; Bershady, Jangren & Conselice 2000) from the growth curve radii R_{20} and R_{80} , enclosing 20 and 80 per cent of the galaxy’s total light, respectively, calculated within a circular aperture defined by R_{\max} :

$$C = 5 \log_{10} \left(\frac{R_{80}}{R_{20}} \right). \quad (2)$$

Asymmetry, A : we followed the standard definition of rotational asymmetry (Shade et al. 1995; Abraham et al. 1996; Conselice et al. 2000; Conselice 2003; Hernández-Toledo 2008):

$$A = \frac{\sum |I_0 - I_\theta|}{2\sum |I_0|} - A_{\text{bgr}}, \quad (3)$$

where I_θ is the flux from an individual pixel in the galaxy image rotated 180° about a chosen centroid (selected to minimize the values of A) and I_0 is flux from a pixel at the same position in the original, unrotated image. The subtraction of A_{bgr} (the asymmetry in the ‘background’) accounts for the effect of noise on A . We measured A within a circular region defined by R_{\max} (rather than the commonly used $1.5 \times R_p$). We chose the rotation centroid out of a set of pixels accounting for the brightest 30 per cent of the

galaxy's total light such as to minimize A : for every pixel being treated as the rotation centroid, we computed A and then selected the minimum value to represent our final measurement. This approach was taken to eliminate potential local asymmetry minima in the morphologically disturbed galaxies (Conselice et al. 2000 found no such minima but their study did not specifically focus on galaxies with significant morphological disturbance, where this effect could become apparent).

Outer asymmetry, A_o : to enhance the signal from the low-surface-brightness regions in the outskirts of the galaxies we used a modified version of the asymmetry measure, which we call the 'outer' asymmetry, A_o . It is computed similarly to the standard asymmetry parameter (equation 3), but with an inner circular aperture containing the brightest 50 per cent of the total flux excluded from the measurement. A comparable definition of 'outer' asymmetry was also recently developed by Wen, Zheng & Xia An (2014).

Clumpiness, S : we measured S following the standard definition (Isserstedt & Schindler 1986; Takamiya 1999; Conselice 2003)

$$S = \frac{\Sigma |I_o - I_\sigma|}{\Sigma |I_o|}, \quad (4)$$

where I_σ stands for pixel intensity in the smoothed galaxy image (using a Gaussian smoothing filter with width given by the radius containing 20 per cent of the total galaxy flux, R_{20}) and I_o is that in the original image. We measured S within an aperture defined by R_{\max} and centred on the highest intensity pixel. We excluded the central circular aperture at R_{20} to eliminate the contribution from extremely bright centres present in some highly concentrated galaxies (see e.g. Conselice 2003).

Gini index, G : we used G to measure the degree of inequality in the light distribution within images of the galaxies (Glasser 1962; Abraham G, van den Bergh & Nair 2003; Lotz et al. 2004):

$$G = \frac{1}{2\bar{X}n(n-1)} \sum_i^n (2i - n - 1) |X_i|, \quad (5)$$

with pixel intensities, X_i , in increasing order, n – the total number of pixels assigned to the galaxy (in this work, using the detection mask), and \bar{X} – the mean over all intensities. G is independent of the position of the galaxy's centre and is computed based on the rank-ordered cumulative distribution function of the pixel intensities within well-specified boundaries. In this work, these boundaries were determined using the binary detection mask.

Moment of light, M_{20} : following Lotz et al. (2004), we computed the second-order moment of the flux-weighted distance of the brightest pixels containing 20 per cent of the total flux (M_{20}) from the centre of the galaxy, to measure the spatial extent of the brightest galaxy regions:

$$M_{20} = \log_{10} \left(\frac{\sum_i M_i}{M_{\text{tot}}} \right), \quad \text{while } \sum_i f_i < 0.2 f_{\text{tot}}$$

$$M_{\text{tot}} = \sum_i^n M_i = \sum_i^n f_i [(x_i - x_c)^2 + (y_i - y_c)^2], \quad (6)$$

with the individual pixel coordinates denoted by x_i , y_i , and the centroid's coordinates given by x_c and y_c . We measured M_{20} within boundaries defined by the binary detection masks, with respect to a free centroid parameter, computed by minimizing the second-order moment of the flux-weighted distance of all pixels, M_{tot} . In this work, the minimization of M_{tot} was performed using candidate

centroid pixels within a region comprising the brightest 30 per cent of the galaxy's total flux.

3.3 A new morphology measure: the 'shape' asymmetry

We introduce a new measure of asymmetry designed specifically to detect galaxies with low-surface-brightness tidal features. We call the new measure the 'shape' asymmetry (A_S). It is computed using the same mathematical expression as the standard asymmetry parameter (equation 3); however, the measurement is performed using the binary detection masks rather than the images of galaxies. This allows for equal weighting of all galaxy parts during the measurement, regardless of their relative brightness. The key difference between A_S and the other asymmetry measures investigated in this work (A , A_o) is that the new parameter is purely a measure of morphological asymmetry and does not contain any information about the asymmetry of the light distribution within the galaxy. It is therefore not influenced by the presence of asymmetric bright galaxy components, like multiple nuclei, and it is highly sensitive to low-surface-brightness regions of galaxies. This is illustrated in Fig. 3.

As in the case of A , during the computation of A_S the images were rotated around the flux-weighted minimum asymmetry centroid, to ensure that the asymmetry is measured with respect to the galaxy core rather than an arbitrary region selected by minimizing the shape asymmetry itself. The measurement was performed within an extraction region defined by a circular aperture at R_{\max} . The noise correction term (A_{bgr} , equation 3) was omitted in the measurement of A_S : in contrast to the standard asymmetry measure, increasing the aperture size does not increase the amount of random noise as all 'background' pixels within the detection mask are set to 0.

4 CALIBRATION AND TESTING

In this section we present the results obtained using the test sample for calibration of the structural parameters with our new binary detection masks (Section 4.1) and testing of the newly introduced morphological measure (Section 4.2).

4.1 The standard measures

The early- and late-type galaxies (ETGs and LTGs, respectively) in the test sample provide a good standard for the measures of galaxy structure as they are expected to show values of n , C , A , S , G and M_{20} within well-established ranges. Based on previous studies

- (i) LTGs tend to have $n \sim 1.0$, while ETGs show a range of values, typically with $2.0 \lesssim n \lesssim 4.0$ (Sérsic 1963);
- (ii) C ranges between 2.0 and 5.0, with highest values characteristic of ETGs ($C > 4.0$) and decreasing to $C \sim 3$ for LTGs (Bershady et al. 2000; Conselice 2003; Hernández-Toledo 2008);
- (iii) all normal galaxies tend to have low A , with values around 0.1 for ETGs, increasing towards later types to around 0.2 (Conselice et al. 2000; Conselice 2003; Hernández-Toledo 2008);
- (iv) S also tends to increase towards later types, ranging from around 0.1 to 0.3 (Conselice 2003; Hernández-Toledo 2008);
- (v) there is a clear separation in the values of G found for ETGs and LTGs, with $G \sim 0.6$ for the former and $G \sim 0.4$ for the latter (Abraham et al. 2003; Lotz et al. 2004);
- (vi) M_{20} takes on values lower than -2.0 for ETGs, and increases to around -1.5 for LTGs; galaxies with double nuclei have $M_{20} \sim -1.0$ (Lotz et al. 2004).

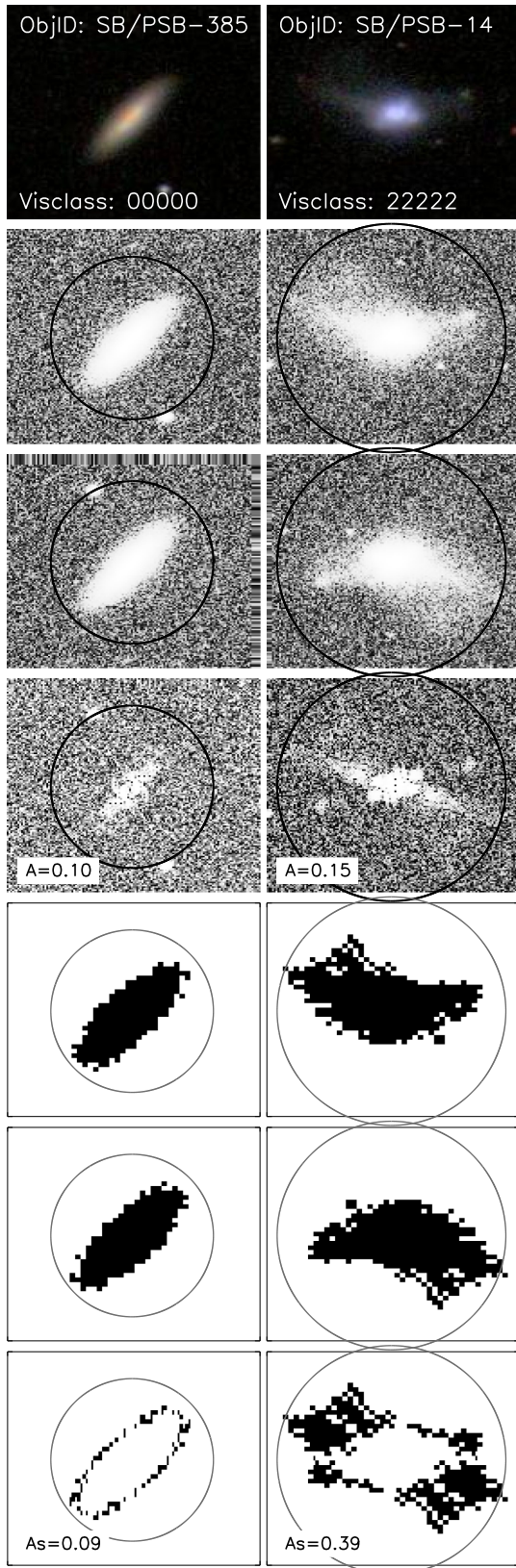


Figure 3. Measurement of A and A_S for a regular (left) and disturbed (right) galaxy. Rows 2, 3 and 4 contain r -band images and rows 5, 6 and 7, the detection masks: unrotated, rotated and residual (absolute difference between the former two), respectively. The apertures show the extraction region defined by R_{\max} .

Fig. 4 shows the six standard structural parameters computed for all galaxies in the test sample. The values obtained for the ETGs and LTGs are in general agreement with previous studies. ETGs appear more concentrated ($2.0 \lesssim n \lesssim 5.0$ and $3.5 \lesssim C \lesssim 4.5$) and have smoother light distribution ($S \sim 0.1$) than LTGs ($0.5 \lesssim n \lesssim 2.0$, $2.5 \lesssim C \lesssim 3.5$, $S \sim 0.2$). Both galaxy types show high symmetry under a rotation about 180° ($0.05 \lesssim A \lesssim 0.2$). ETGs and LTGs are also well separated from one another in the G - M_{20} space, with the former showing more unequal light distributions ($0.4 \lesssim G \lesssim 0.6$) and the presence of a compact bright nucleus ($M_{20} < -2$), than the latter ($0.6 \lesssim G \lesssim 0.8$, $M_{20} > -2$). The separation between early and late types in the A - S parameter space is not as strong as expected from the results of previous studies. This is likely a consequence of the relatively regular appearance and lack of prominent spiral arms in the LTG subsample (Appendix A), leading to low values of both A and S .

Within the test sample, the morphologically disturbed galaxies are not easily distinguishable from galaxies with regular morphologies, when using the six standard structural parameters. Exceptions are galaxies with multiple bright nuclei (marked by circles in Fig. 4). In those cases, care should be taken when interpreting the values of n and C , measured within the R_{\max} , as they correspond to the entire (still merging) system rather than its individual components. For most parameters, the values span the whole range characteristic of both ETGs and LTGs, with a slight bias towards the former. The exceptions are G and A . The values of G found for the morphologically disturbed galaxies are more similar to those found for highly concentrated ETGs. We note that this tendency for such high values of G could be a result of the sample selection as all morphologically disturbed galaxies were selected from a parent sample of galaxies with central SB/PSB signatures. This is supported by the fact that the undisturbed SB/PSB galaxies also show high values of G . Additionally, in morphologically disturbed galaxies the values of G could potentially be enhanced by the presence of the faint tidal features which tend to add to the inequality in the light distributions in those galaxies (see Lotz et al. 2004). However, the fact that equally high values of G were found in the morphologically undisturbed SB/PSB suggests that this contribution of faint tidal features to the measured values of G may not be substantial.

The difference between morphologically disturbed galaxies and galaxies with regular morphologies is most noticeable in the values of A . However, only 35 per cent (7/13) of the galaxies with the highest morphological disturbance in the test sample are well separated from the galaxies with regular appearance. Visual inspection of these galaxies shows that those with highest A generally have bright double nuclei. The values of A measured for galaxies with low morphological disturbance are comparable with those obtained for galaxies with regular morphologies.

We conclude that, while the standard measures investigated in this work are suitable for the structural analysis of normal galaxies as well as for identifying galaxies with multiple nuclei, they are not as well-suited for identifying galaxies with faint tidal features observed in post-mergers. In the following section, we present results for our new modified asymmetry measure, designed specifically for identifying galaxies with such features.

4.2 The ‘shape’ asymmetry

In Fig. 5 we compare the values of our new measure of morphology, A_S , with the two measures of structural asymmetry, A and A_0 . The dotted lines represent a threshold value at 0.2 used to separate between galaxies with regular morphologies and those with high

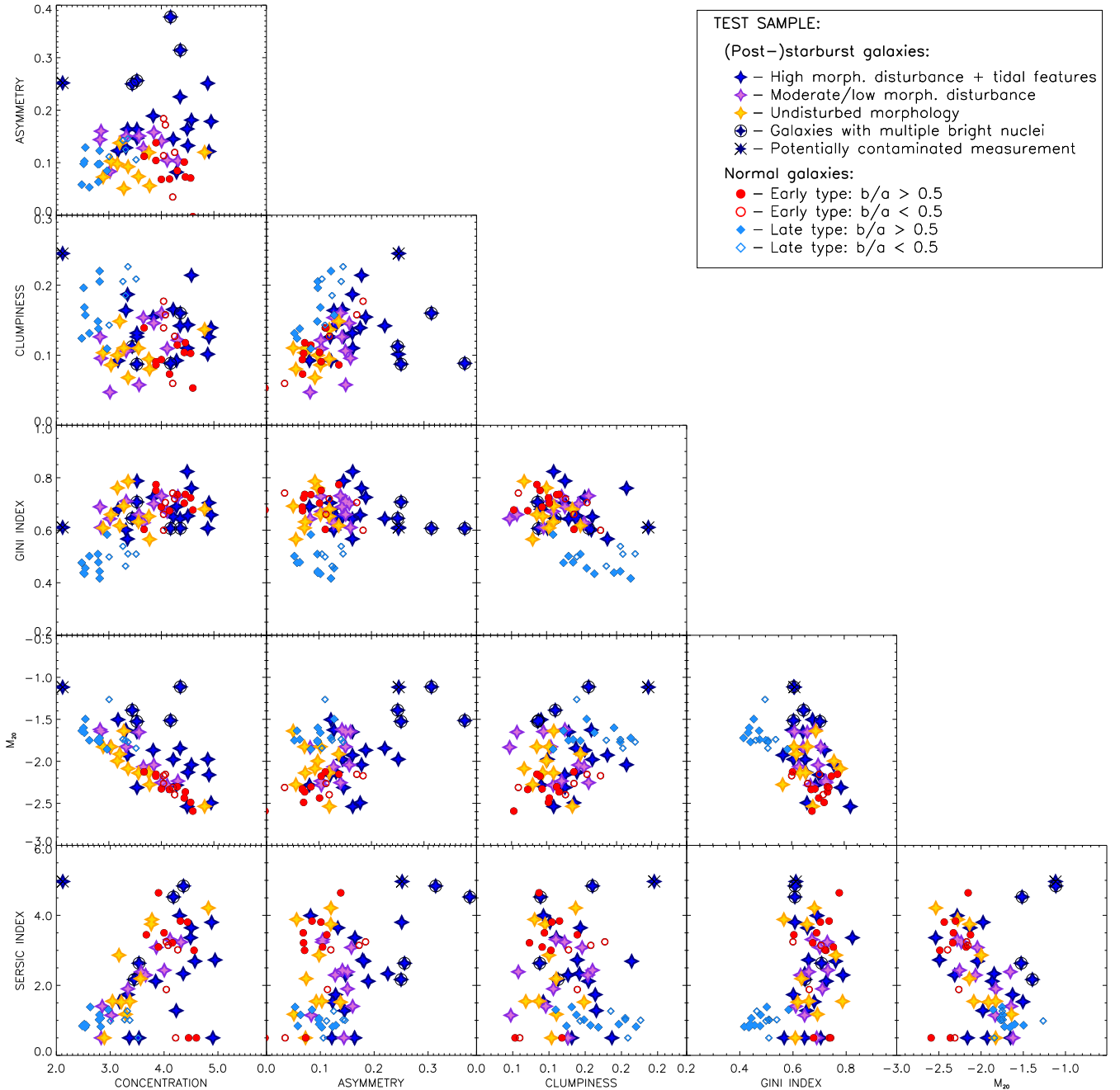


Figure 4. Relations between the six standard morphology measures (Sérsic index [n], concentration [C], asymmetry [A], clumpiness [S], Gini index [G] and M_{20}) computed for the test sample. The meaning of the symbols is described in the legend where galaxies are split into subsets based on visual classification and the SDSS *fracdev* parameter (see Section 2.1).

morphological disturbance. The threshold was chosen empirically based on the fact that all galaxies with regular morphologies in the test sample have $A_S < 0.2$ while $A_S \geq 0.2$ is found only for galaxies with some level of morphological disturbance (detected by visual inspection). The situation is similar for A and A_0 , (with an exception of one elliptical galaxy having a slightly higher A_0). We compare the performance of the three measures of asymmetry by considering this threshold.

Fig. 5 shows that the shape asymmetry performs significantly better at separating galaxies with highest degree of morphological disturbance from those with regular appearance, than the other two asymmetry measures. Considering the above threshold value, $A_S \geq$

0.2 identifies 95 per cent of the galaxies with most prominent tidal features (dark blue symbols), compared with 35 and 45 per cent picked out by A and A_0 , respectively. Visual inspection of the single galaxy omitted by A_S revealed that the features present in the galaxy's structure form an azimuthally symmetric pattern, explaining the corresponding low value of A_S . We note that the new measure also recognizes 60 per cent of galaxies with lower level of morphological disturbance (violet symbols), while both the standard asymmetry parameter and the outer asymmetry fail to pick out any such objects.

The ability of A_S to detect galaxies with asymmetric tidal features comes from the independence of the measure of the flux distribution

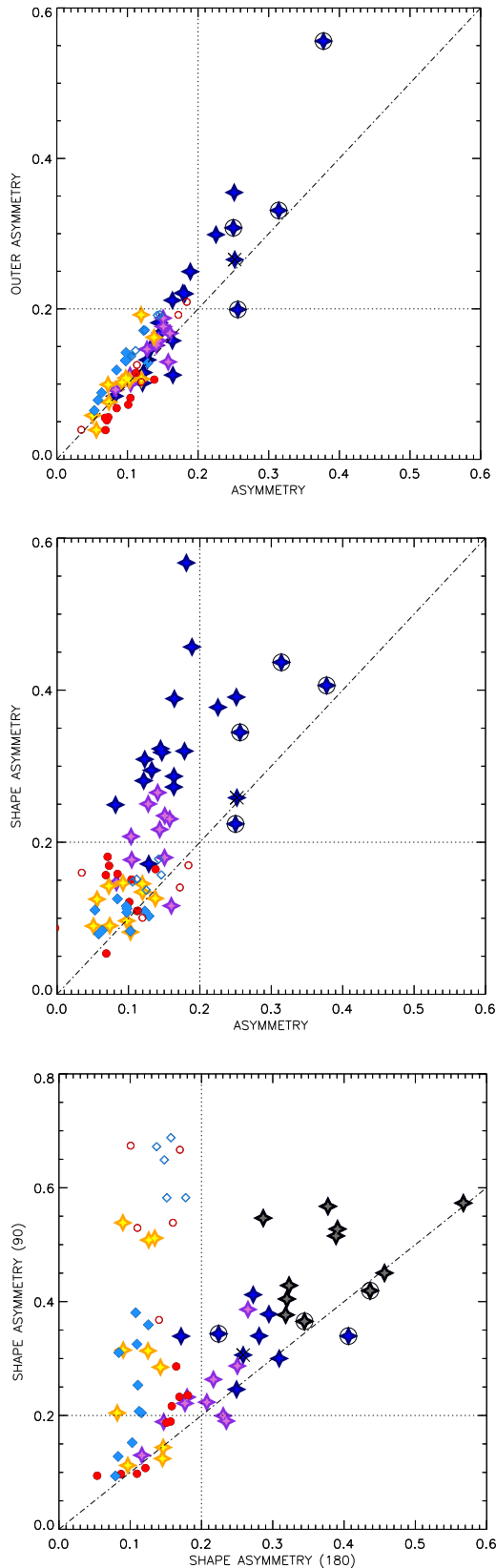


Figure 5. For legend, see Fig. 4. In the bottom plot, the galaxies with significant morphological disturbance are further split into those with shell-like features (navy blue symbols) and elongated tails (black symbols).

within the galaxies. In contrast, both A and A_0 are flux-weighted measurements and therefore can become dominated by the brightest regions within galaxies, especially in the case of the former, where significant contribution to the measurement can come from multiple bright nuclei found in galaxies in pre-coalescence stages of a merger. Visual inspection identifies 4/7 (57 per cent) such galaxies in the test sample and all of them have $A \geq 0.2$ (Fig. 5). In the case of A_0 , the contribution from multiple bright nuclei will not be as significant as in the case of A , as the inner aperture containing the brightest 50 per cent of the total light is omitted. The parameter should therefore be more sensitive to the low-surface brightness regions than A ; however, as we show in Fig. 5, it fails to identify more than half of the galaxies with highly disrupted morphologies. We also investigate outer asymmetries computed by cutting out inner apertures containing as much as 80 and 90 per cent of the total flux; however, we find no significant improvement over A_0 with the inner 50 per cent cut out. This may stem from the differences in the light profiles of galaxies: while for some objects cutting out the inner circular aperture containing 50 per cent of the total light may be optimal for separating its asymmetric outer features, it may prove insufficient or excessive for other galaxies. It is therefore not obvious how to define the inner circular aperture that would yield the most robust result. We also investigate an alternative approach to outer asymmetry by considering a central region with its geometry defined by the distribution of pixels accounting for a given fraction of the total galaxy light. However, we find that the irregularity of the inner region defined in such a way artificially increases the value of A_0 .

We conclude that the shape asymmetry is a much better indicator of the presence of asymmetric tidal features in galaxies than any of the standard structural parameters considered in this work, including the standard asymmetry parameter, A , and its modifications designed to measure the asymmetry of galaxy outskirts (A_0). We note that the shape asymmetry is purely a measure of galaxy morphology rather than structure. In order to gain information about the asymmetry of the light distribution within galaxies, the computation of the standard asymmetry parameter is a more suitable approach.

4.2.1 Significance of rotation angles

As shown in the study by Conselice et al. (2000), while normal galaxies tend to show strong 180° -symmetry, their projected shapes can introduce significant asymmetry under a 90° -rotation (A_{90}), which can serve as a good approximation for the directly measured minor-to-major axes ratio for statistical galaxy samples. In particular, galaxies seen ‘face-on’ show $A_{90} \sim 0$, while those observed at higher inclination angles tend to reveal higher values, with A_{90} reaching around 0.8 for the edge-on systems.

We applied the concept of asymmetry under a 90° -rotation to the binary detection masks of galaxies within the test sample. As shown in Fig. 5, spiral and elliptical galaxies are separated in $A_{S(90)}$ according to their axial ratio: galaxies with $b/a < 0.5$ tend to show higher asymmetries under a 90° rotation. We find that $A_{S(90)}$ is roughly correlated with $A_{S(180)}$ for the morphologically disturbed galaxies; however, the large scatter is caused by the variety of shapes of the tidal features. Within the test sample, galaxies with elongated tail-like features tend to have both higher $A_{S(180)}$ and $A_{S(90)}$, while those with shell-like features show lower $A_{S(90)}$. Further tests of this aspect of the shape asymmetry will involve samples of galaxies with representative tidal features of different types (e.g. Atkinson, Abraham & Ferguson 2013), galaxies in earlier stages of a merger

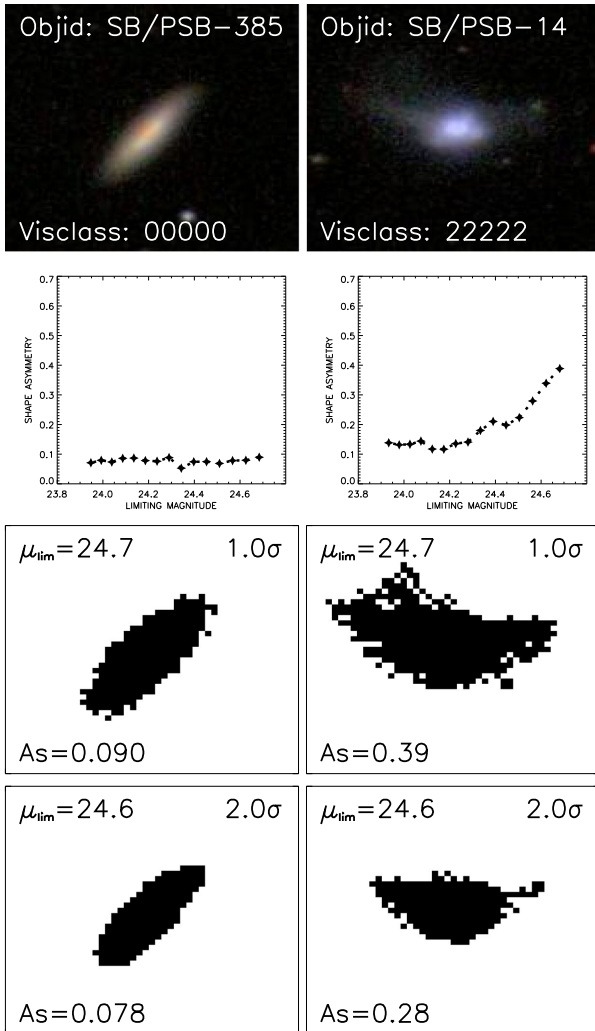


Figure 6. Dependence of the measurement of A_S on the image quality (Section 4.2.2) for a regular (left) and morphologically disturbed (right) galaxy (classified visually – see Section 5.1). In the two bottom panels, the corresponding galaxy detection masks are presented, computed using threshold values equal to 1σ and 2σ above the sky background level estimate.

(e.g. Ellison et al. 2013), as well as simulated galaxy mergers (Johansson et al. 2009).

4.2.2 Image quality effects

As the binary detection masks are created by assembling connected pixels above a specific threshold, the measurement of A_S will depend on the choice of that threshold. Therefore, the limiting surface brightness of the images used to create the detection masks will be the measurement’s main limitation.

For the SDSS r -band images, the optimal detection threshold was found to be 1σ above the sky background level, corresponding to $\mu_{\text{lim}} = 24.7$ mag arcsec $^{-2}$. Fig. 6 shows example results of tests of the dependence of A_S on the limiting surface brightness of the galaxy images by increasing the detection threshold. Upon inspection of the resulting binary masks and the corresponding values of the shape asymmetry we find that, unsurprisingly, the behaviour of A_S with limiting magnitude depends on the geometry of the features in the outskirts of the galaxies, as well as on their brightness relative to the central regions. For objects showing significant morpholog-

ical disturbance, A_S changes substantially and in general follows a decreasing trend with decreasing μ_{lim} (i.e. with decreasing image depth). Conversely, in the case of galaxies with regular morphologies, this effect is much less pronounced and the measurement of A_S shows stability against varying μ_{lim} .

To summarize, A_S provides a robust way of quantifying galaxy morphology and it is the most successful automated method to date at distinguishing between galaxies with asymmetric tidal features and those with regular morphologies. To accurately measure the shape asymmetry of galaxies, images of sufficient depth are required. The SDSS data used in this study are sufficiently deep in surface brightness to reveal faint structures in the outskirts of galaxies; however, using images of higher limiting magnitude could disclose further even fainter features in their morphology, consequently influencing their measured values of A_S . Therefore, great care must be taken when comparing measurements of A_S between different surveys, and between galaxies with different redshifts.

5 RESULTS

In this section we present the results of the structural and morphological analysis of the (post-) starburst galaxies. First, we summarize the results of a visual inspection of the galaxy images (Section 5.1), and then we present the main findings of the automated approach (Section 5.2).

5.1 Qualitative description

We examined the r -band images of the 335 SB/PSB galaxies for features suggesting a past merger event, with an aim to determine the dependence of the presence of such features on the starburst age. The visual inspection was carried out independently by five reviewers and involved examining images of the SB/PSB galaxies as well as an additional sample of 300 continuously star-forming galaxies. The star-forming galaxies were selected from the blue cloud, using the same spectral indices as the SB/PSB galaxies and within the same redshift and stellar mass range (in this case, blue-cloud galaxies were more appropriate than red sequence, because, due to their star formation activity, they are more likely to show disturbance in their structure than galaxies in which the star formation has already quenched). All images were randomized prior to inspection. Each galaxy was then classified, according to a pre-agreed scheme, as an object with

- (i) regular morphology, no signs of disturbance pointing to any kind of interaction (class 0),
- (ii) low/moderate level of morphological disturbance suggesting a possible interaction (class 1),
- (iii) high morphological disturbance (obvious post-merger) with elongated tidal features, e.g. tails (class 2),
- (iv) high morphological disturbance (obvious post-merger) with shell-like features (class 3).

Examples of the different classes of galaxies are presented in the top row of Fig. 2, with the numeric classes assigned by the five classifiers. The visual inspection has shown that the galaxies in our SB/PSB sample have a variety of morphologies. Many, in particular those of young starburst ages, show signs of a past merger, including disturbed morphologies and presence of tidal features. Ongoing mergers with double bright nuclei constitute only ~ 3 per cent of the whole sample.

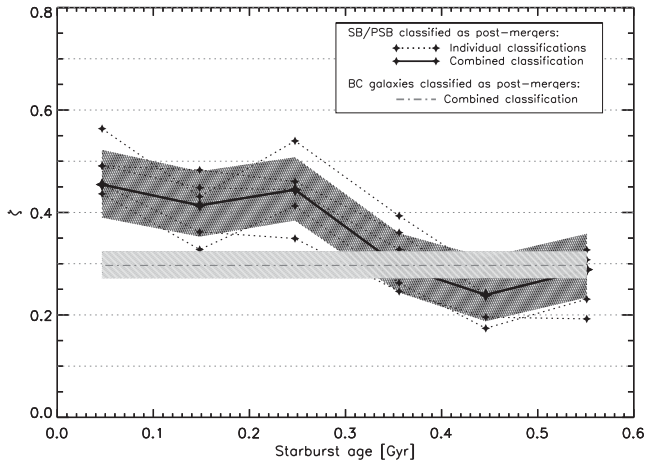


Figure 7. Visual classification of the 335 SB/PSB galaxies and a control sample of 300 star-forming galaxies. ζ represents the fraction of SB/PSB galaxies with morphological disturbance per starburst age bin (solid line), where at least three reviewers agreed on the presence of morphological disturbance. The dotted lines correspond to the classifications by individual reviewers and the dashed line shows the fraction of normal star-forming galaxies with morphological disturbance. The starburst age does not apply to the control sample. The shaded regions represent the binomial 1σ confidence intervals, calculated after Cameron (2010).

In Fig. 7 we define ζ as the fraction of SB/PSB galaxies showing signatures of a past (or ongoing) merger (disturbance in morphology, presence of tidal features such as tails, arms or shells – i.e. classes 1, 2 and 3), calculated independently in different age bins with a width of 0.1 Gyr. As visual classification is subjective, the individual classifications were not always in complete agreement. For a compromise of reliability and detectability, we discuss the ‘combined classification’, in which case ζ includes only those galaxies for which at least three reviewers agreed on the presence of morphological disturbance. As shown in Fig. 7, about 45 percent of the youngest SB/PSB galaxies ($t_{\text{SB}} < 0.1$ Gyr) in the sample show features characteristic of a post-merger. Furthermore, there is a decreasing trend in ζ with starburst age. For the older PSB galaxies in the sample ($t_{\text{SB}} > 0.3$ Gyr), we find $\zeta \sim 30$ percent, which is consistent with the fraction of morphological disturbance found in our control sample of ordinary blue-sequence galaxies.

5.2 Quantitative measures of structure and morphology

In Figs 8 and 9, we present all measures of galaxy structure and morphology considered in this work, computed for the SB/PSB sample as a function of starburst age (t_{SB}), as well as for the control samples of star-forming blue-cloud and quiescent red-sequence galaxies (plotted with arbitrary ages for clarity). For each parameter, we show individual values per galaxy and median values calculated in 0.1-Gyr wide age-bins (left-hand column). We also quote the Spearman rank correlation coefficient (ρ) and the corresponding p -value (two-sided significance of the coefficient’s deviation from zero). All values are summarized in Table 1, where we comment on the general characteristics of our sample, inferred from the individual parameters. Figs 8 and 9 also show distributions of the parameter values: in the middle panel, for the youngest ($t_{\text{SB}} \leq 0.1$ Gyr) and oldest ($0.5 \text{ Gyr} \leq t_{\text{SB}} \leq 0.6$ Gyr) (post-) starburst galaxies in the sample, and in the right-hand panel, for the oldest (post-) starburst galaxies and the control sample of star-forming and quiescent galaxies. For quantitative comparison of the distributions, we performed

a Kolmogorov–Smirnov (KS) test. We quote the obtained values of the KS statistics (D) and the corresponding probability of the null hypothesis (p) in the respective panels of Figs 8 and 9.

Considering the measures pertaining to the central concentration of light and the spatial extent of the galaxy nucleus, we find that most galaxies in the SB/PSB sample show characteristics of early-type discs: $1.0 \lesssim n \lesssim 3.0$, $3.0 \lesssim C \lesssim 4.0$, M_{20} peaking around -2.0 (see e.g. Bershady et al. 2000; Conselice 2003; Lotz et al. 2004; Hernández-Toledo 2008). As suggested by the low values of the Spearman rank correlation coefficient, there is no significant trend in either n , C or M_{20} with starburst age (see the left-hand panel of Fig. 8). This points to little evolution of the central light concentration over the first 0.6 Gyr after the starburst. Direct comparison of the young and old (post-) starburst galaxies shows little difference in the distributions of all three parameters (middle panel, Fig. 8) and the KS test suggests that they are likely to have been drawn from the same distribution. Comparison of the old subset with the control sample of red-sequence galaxies reveals that, after 0.6 Gyr since the last starburst, the (post-) starburst galaxies are not as highly concentrated as the galaxies populating the red sequence; rather, their structure (n , C , M_{20}) bears closer resemblance to star-forming blue-cloud galaxies (right-hand panel, Fig. 8).

The values of the Gini index found for the youngest galaxies in the (post-) starburst sample are as high as those obtained for the red-sequence galaxies (right-hand panel, Fig. 8). Contrary to n , C and M_{20} , G is a measure independent of the position of the galaxy centre or assumptions of azimuthally symmetric apertures, and it is designed to pick out changes in the light distribution on a pixel scale. It should therefore be more sensitive to subtle variations in the light distribution of galaxies following a starburst than the other measures. Consequently, high G does not necessarily imply high central concentration. G shows the most pronounced correlation with the starburst age out of all measures considered in this work ($\rho = -0.3$, $p < 1.0^{-4}$). The decreasing tendency suggests that SB/PSB galaxies tend to have more uniform light distribution as they age, which could be a consequence of the decaying starburst as well as, to some extent, diminishing prominence of the faint tidal features. We do not attribute this effect to contribution from multiple nuclei as their presence is indicated only in a few galaxies by M_{20} (the dearth of objects with $M_{20} \geq -1.0$). This was confirmed during the visual inspection of the galaxy images (only ~ 3 per cent classified as ongoing mergers). The fading central starburst could also be the reason for the increasing tendency in clumpiness as a function of starburst age (left-hand panel, Fig. 9). As the amount of light from the star-bursting region decreases, the less luminous off-centre star-forming regions are being uncovered, increasing the resulting values of S (although the parameter is designed to exclude the bright central regions from the measurement, the size of the excluded central aperture will not always coincide with that of the star-bursting region).

All three measures of rotational asymmetry, A , A_0 and A_S , show a decreasing tendency with the starburst age (left-hand column, Fig. 9) but the trend is most pronounced in the values of the shape asymmetry ($\rho = -0.2$, $p \sim 10^{-4}$). We also find an excess of young galaxies with high A_S when comparing the distributions of A_S for the young and old subsets (middle panel, Fig. 9) of the (post-) starburst sample. In Table 2, we compare the number of such ‘outliers’ and its evolution with starburst age for all three measures of asymmetry, using the threshold value of 0.2 defined in Section 4.2. We find the highest number of outliers for the shape asymmetry: 43 per cent of galaxies with $t_{\text{SB}} < 0.3$ Gyr show $A_S \geq 0.2$, and the fraction drops to 21 per cent for galaxies with $t_{\text{SB}} > 0.3$ Gyr. In the last column

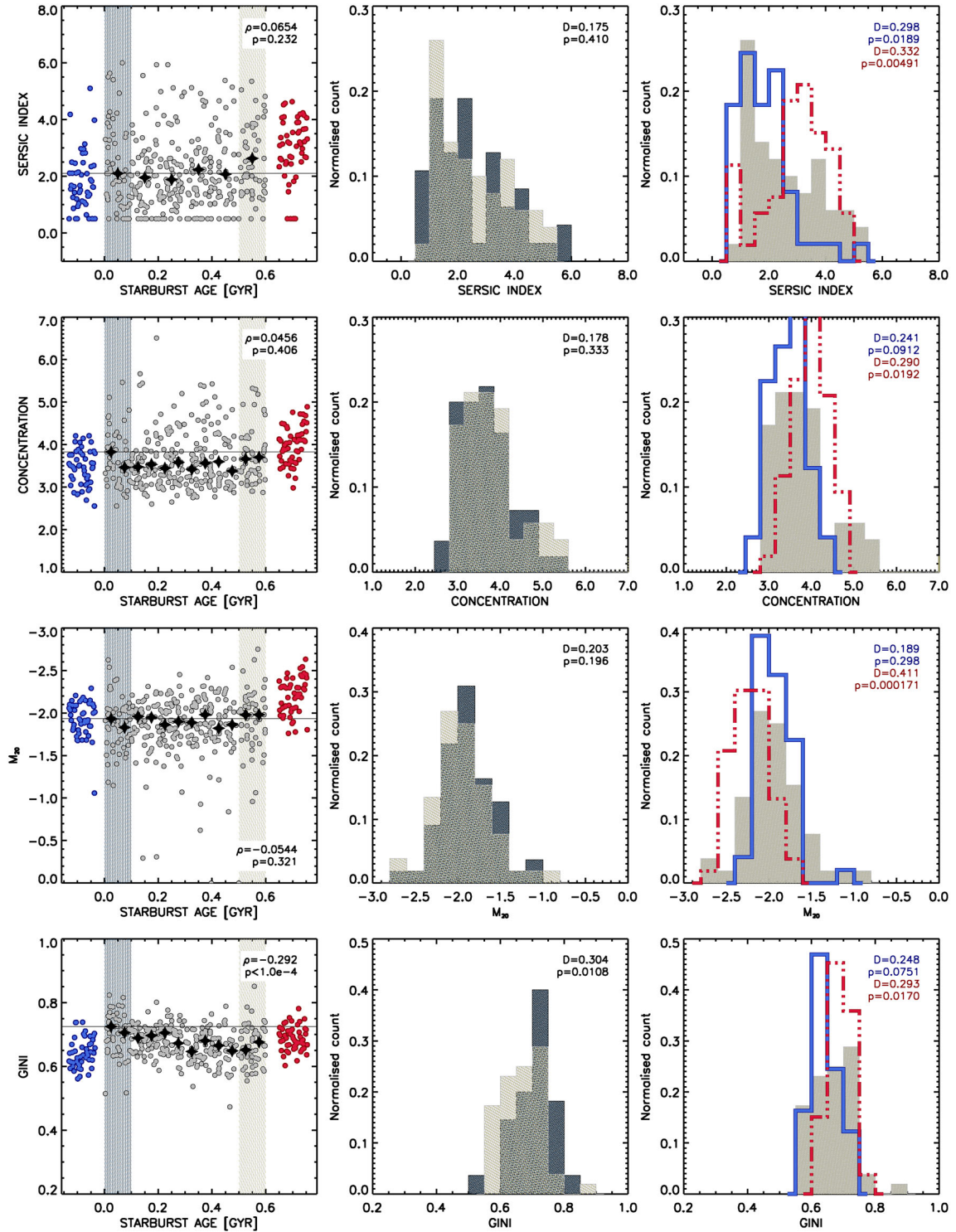


Figure 8. Left-hand column: the evolution of the Sérsic index (n), concentration index (C), moment of light (M_{20}) and the Gini index (G) as a function of the starburst age for the (post-) starburst sample (grey symbols – values for individual galaxies; black symbols – median values per age-bin). The horizontal lines denote the initial (median) level for each parameter. The blue/red data points correspond to the control samples of blue-cloud/red-sequence galaxies which are placed on the x -axis at a range of arbitrary starburst ages for clarity. The shaded regions mark the young and old subsets of (post-) starburst galaxies. The numbers quoted are as follows: the Spearman rank correlation coefficient (ρ) and the two-sided significance of the coefficient’s deviation from zero (p). Middle column: histograms show the distributions of the parameter values for the young (dark grey) and old (light beige) (post-) starburst galaxies. Right-hand column: histograms correspond to the old PSB galaxies (light beige) and the blue-cloud/red-sequence galaxies (blue/red). D is the KS statistics and p , the corresponding probability of the null hypothesis.

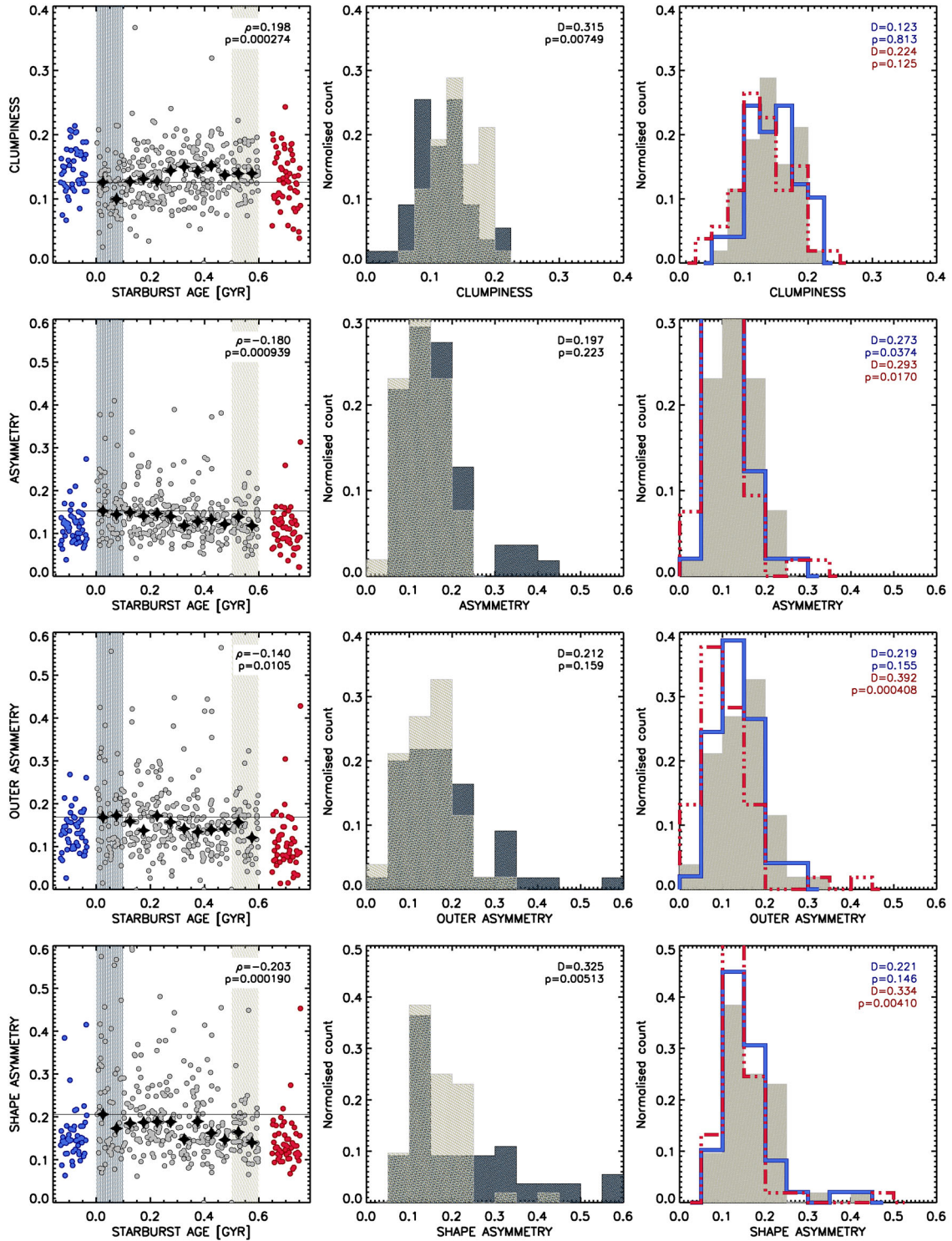


Figure 9. Left-hand column: the evolution of the measure of clumpiness (S), standard asymmetry (A), outer asymmetry (A_0) and shape asymmetry (A_S) as a function of the starburst age for the (post-) starburst sample (grey – values for individual galaxies; black – median values per age-bin). The horizontal lines denote the initial (median) level for each parameter. The blue/red data points correspond to the control samples of blue-cloud/red-sequence galaxies which are placed on the x -axis at a range of arbitrary starburst ages for clarity. The shaded regions mark the young and old subsets of (post-)starburst galaxies. The numbers quoted are the Spearman rank correlation coefficient (ρ) and the two-sided significance of the coefficient's deviation from zero (p). Middle column: histograms show the distributions of the parameter values for the young (dark grey) and old (light beige) (post-) starburst galaxies. Right-hand column: histograms correspond to the old PSB galaxies (light beige) and the blue-cloud/red-sequence galaxies (blue/red). D is the KS statistics and p , the corresponding probability of the null hypothesis.

Table 1. Structural and morphological evolution of SB/PSB galaxies (see left-hand panel of Figs 8 and 9). First column: range of parameter values (for the majority of galaxies); second column: trend with the starburst age quantified by the Spearman rank correlation coefficient and the corresponding p -value; third column: comments on the mean sample characteristics.

Typical range	Trend with t_{SB} (Spearman)	Comments (mean characteristics)
$1.0 \lesssim n \lesssim 3.0$	$\rho \sim 0.06$ $p \sim 0.23$	– light profiles of early discs; – no significant trend with starburst age;
$2.9 \lesssim C \lesssim 4.2$	$\rho \sim 0.04$ $p \sim 0.41$	– moderate concentration; – no significant trend with starburst age;
$-2.4 \lesssim M_{20} \lesssim -1.4$	$\rho \sim -0.05$ $p \sim 0.32$	– moderately extended single nucleus; – no significant trend with starburst age;
$0.55 \lesssim G \lesssim 0.8$	$\rho \sim -0.29$ $p < 1.0e^{-4}$	– highly unequal light distribution; – moderate decline with starburst age;
$0.08 \lesssim S \lesssim 0.2$	$\rho \sim 0.20$ $p \sim 1.0e^{-4}$	– moderately ‘clumpy’ light distribution; – moderate increase with starburst age;
$0.05 \lesssim A \lesssim 0.25$	$\rho \sim -0.18$ $p \sim 1.0e^{-3}$	– moderately declining asymmetry with starburst age;
$0.05 \lesssim A_0 \lesssim 0.25$	$\rho \sim -0.14$ $p \sim 0.01$	– moderately declining asymmetry with starburst age;
$0.05 \lesssim A_S \lesssim 0.35$	$\rho \sim -0.20$ $p \sim 1.0e^{-4}$	– moderately declining asymmetry with starburst age.

Table 2. Age evolution of the fraction of SB/PSB galaxies with strong asymmetric features (outliers in the plots of A , A_0 or A_S , see Fig. 9). The percentages in the second and third column correspond to the fraction of SB/PSB galaxies with $t_{\text{SB}} < 0.3$ and $t_{\text{SB}} > 0.3$, respectively, with values of either A , A_0 or A_S greater than 0.2. The last column shows the trends with the starburst age quantified by the Spearman rank correlation coefficient and the corresponding p -value.

Asymmetry measure	Outliers with $t_{\text{SB}} < 0.3$	Outliers with $t_{\text{SB}} > 0.3$	Trend in the fraction of outliers
A	16 per cent	8 per cent	$\rho \sim -0.71$ $p \sim 0.11$
A_0	27 per cent	14 per cent	$\rho \sim -0.77$ $p \sim 0.07$
A_S	43 per cent	21 per cent	$\rho \sim -0.94$ $p \sim 10^{-3}$

of Table 2, we quantify the trend in the fraction of galaxies with A , A_0 and A_S greater than 0.2 as a function of the starburst age (in 0.1-Gyr-wide age bins), by means of the Spearman rank correlation coefficient and the corresponding p -value. We find a decreasing

tendency for all three measures, but a particularly strong and statistically significant trend for the shape asymmetry ($\rho \sim -0.9$, $p \sim 10^{-3}$). This declining number of the outliers suggests that, as (post-) starburst galaxies age, they are less likely to show the presence of asymmetric features in their structure. In the case of the standard asymmetry measure, the observed decline is likely to be associated with changes in the symmetry of the central bright galaxy regions. The decrease in the number of galaxies with high shape asymmetry, as a function of the starburst age, points directly to morphological transformations and implies that (post-) starburst galaxies are less likely to show the presence of tidal features, characteristic of post-mergers, as they age.

To summarize, the quantitative analysis of the structure of local (post-) starburst galaxies with high stellar mass surface density, reveals moderate central concentration, light profiles and spatial extent of the brightest regions characteristic of early-type disc galaxies, as expected for the sample selection. We do not find any significant evolution of these properties during the first 0.6 Gyr following the most recent starburst. The distribution of light within the (post-) starburst galaxies shows a high level of inequality, as measured by the Gini index, (particularly for those with youngest starbursts), and this inequality decreases with the starburst age. This could be an effect of the decaying starburst and/or of the fading faint tidal features in the outskirts of those galaxies; however, the latter is not expected to be significant, as discussed in Section 4.1. Using the shape asymmetry we find that, within the first 0.6 Gyr after the most recent starburst, (post-) starburst galaxies are less likely to show the presence of tidal features characteristic of post-mergers as they age.

6 DISCUSSION

Both visual and automated analyses of the (post-) starburst galaxies point to a declining number of galaxies with high morphological disturbance as a function of starburst age. Below, we present a quantitative comparison of the visual versus automated approaches used in this paper (Section 6.1). We then discuss the findings of this study in the context of galaxy evolution (Section 6.2).

6.1 Detecting tidal features – visual versus automated approach

In the left-hand panel of Fig. 10 we compare the qualitative analysis of the (post-) starburst galaxies based on visual classification, with both the standard and new automated measures of asymmetry. As in Section 5.1, we define ζ as the fraction of (post-) starburst galaxies classified as post-merger candidates in a given age bin. In the case of the visual approach, we show the combined classification, including only those galaxies for which at least three reviewers agreed on the presence of morphological disturbance. For the automated classification, we consider the threshold value introduced in Section 4.2 where an automatically selected post-merger candidate has $A_S \geq 0.2$. The automated classification computed using the shape asymmetry reproduces almost exactly the result of the human visual classification, pointing to a declining trend in ζ with the starburst age.

In the right-hand panel of Fig. 10, we define ζ^* – the fraction of the visually identified post-merger candidates which have $A_S \geq 0.2$, calculated in a given age bin. Above each data point, we quote the total number of galaxies (both with and without morphological disturbance) per age bin. The declining trend in ζ^* means that the agreement between visual and automated classification weakens with the starburst age. The reason for this is twofold: (1) the visual

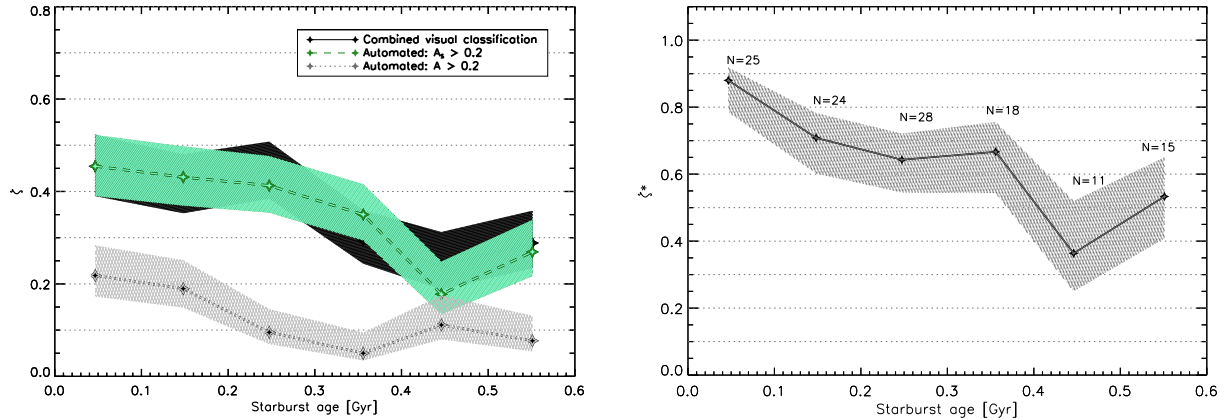


Figure 10. Left-hand panel: the fraction of PSB galaxies showing signatures of a past (or still ongoing) merger (ζ) computed automatically by considering galaxies with $A \geq 0.2$ (dashed green line) and $A_S \geq 0.2$ (dotted grey line). For comparison, we also show the combined visual classification presented in Fig. 7 (solid black line). Right-hand panel: the fraction of PSB galaxies classified as past/ongoing merger candidates (by minimum three reviewers), for which $A_S \geq 0.2$. In both plots, the shaded regions show the binomial 1σ confidence intervals, calculated after Cameron (2010).

classification was computed by combining individual classifications obtained by different reviewers and is therefore affected by the differences in opinions between them; (2) the automated approach is designed to measure the degree of asymmetry of the tidal features present in galaxies, while the visual approach classifies galaxies according to the presence/absence of such features only. The second statement is supported by the declining trend in A_S as a function of the starburst age for the morphologically disturbed (post-) starburst galaxies (Fig. 11a).

6.2 Merger, starburst, post-merger, post-starburst,...red sequence?

In this section we discuss the implications of our findings on the role of galaxy mergers in inducing starburst events in massive star-forming galaxies, and that of (post-) starburst galaxies in the build-up of the red sequence.

6.2.1 From merger to (post-) starburst

The results of this study are in a general agreement with previous works on the presence of tidal features in the structure of some galaxies with PSB stellar populations (Zabludoff et al. 1996; Blake et al. 2004; Goto 2005; Yang et al. 2008). We do not make direct quantitative comparisons due to our different selection criteria, and image limiting magnitudes, and consequently, different sample properties, compared to previous studies. Here, we consider an evolutionary sample of starburst and PSB galaxies and trace the changes in their morphology as a function of the starburst age, while the results of the previous studies refer to generally older PSB galaxies with no spectroscopic evidence of ongoing star formation. We find that at least 45 per cent of the youngest starburst galaxies in our sample show disturbed morphological features, and that this fraction decreases with the starburst age to about 25–30 per cent at $t_{SB} > 0.3$ Gyr (left-hand panel, Fig. 10). This latter fraction is consistent with the fraction of ordinary blue-sequence galaxies that are visually classified as being morphologically disturbed (Fig. 7), and therefore the morphological disturbance may not be directly related to the starburst event. We also find a declining trend in A_S in morphologically disturbed galaxies, with the youngest starbursts showing a range of values between ~ 0.2 and 0.6 , and most galaxies with $t_{SB} > 0.4$ Gyr having $A_S \sim 0.2$ (Fig. 11a). This provides a

qualitative fit to the galaxy merger picture emerging from numerical simulations where, after the coalescence of the two progenitors, the morphological disturbance of the system gradually fades away leading to formation of a morphologically undisturbed remnant (see e.g. Lotz et al. 2008).

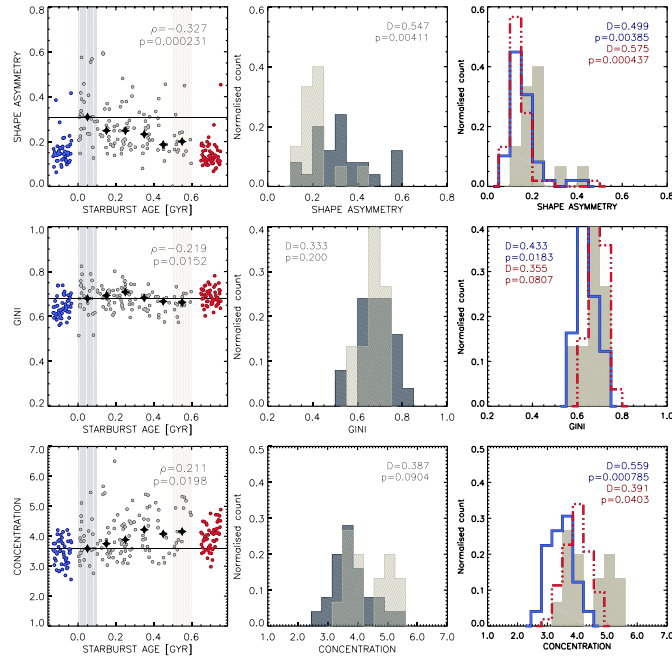
To investigate the role of galaxy mergers in inducing starburst events in massive star-forming galaxies, we must focus on galaxies which have experienced a very recent starburst, so that at the time of observations their tidal features have not begun to vanish. Consequently, we consider the youngest age-bin in Fig. 10 (left-hand panel) to deduce that, based on the investigated sample, we can attribute at least 45 per cent of the (post-) starburst signatures to galaxy mergers. The remaining 55 per cent could be a result of (1) either galaxy mergers/interactions under conditions that fail to produce tidal signatures in the remnants' morphologies or, (2) some other internal processes. The fact that 30 per cent of our control sample of blue-sequence galaxies are also visually identified as being morphologically disturbed, additionally indicates that either galaxy mergers in the local Universe can cause significant morphological disturbance without inducing a central starburst, or morphological disturbance is not a good predictor of a past merger event.

In future work, we will extend our analysis to a larger sample of galaxies with young starbursts, more representative of the entire galaxy population in the nearby Universe. We will also aim to constrain the upper limit on the fraction of (post-) starburst galaxies which have originated from a merger by considering galaxy mergers found in cosmological simulations.

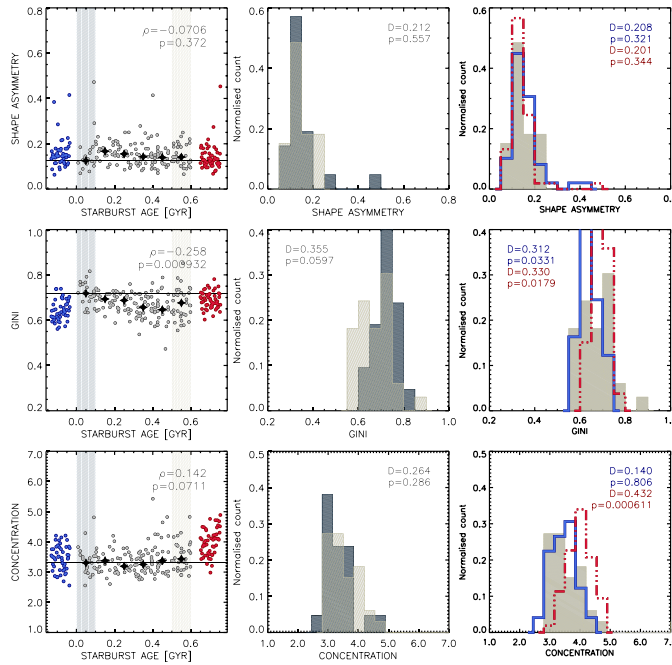
6.2.2 From (post-) starburst to quiescence

The values of G obtained for galaxies with the youngest starbursts ($t_{SB} < 0.1$ Gyr) are as high or even higher than those found for the continuously star-forming and quiescent galaxies, and they tend to decrease with the starburst age. In the previous section, we attributed this effect primarily to the decaying nuclear starburst but we also noted that contributions from faint tidal features in galaxies may increase the corresponding values of G . Although our analysis of the test sample suggests that the presence of faint tidal features should have a marginal effect on G in (post-) starburst galaxies, here, we address this concept again by investigating the behaviour

(a) (Post-)starburst galaxies with disturbed morphologies (r-band)



(b) (Post-)starburst galaxies with regular morphologies (r-band)



(c) (Post-)starburst galaxies with regular morphologies (g-band)

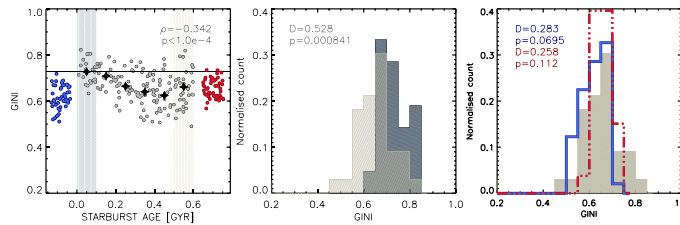


Figure 11. Measures of A_S , G and C for visually selected subsets of the (post-) starburst sample: (a) morphologically disturbed galaxies, (b) galaxies with regular morphologies. Additionally, in (c), we show the values of G measured in the g band for the subset of (post-) starburst galaxies with regular morphologies. For legend, see Figs 8 and 9.

of the Gini index in the morphologically disturbed and undisturbed subsets of our (post-) starburst sample separately.

In Fig. 11(b) we present the evolution of G for (post-) starburst galaxies with regular morphologies as identified by visual inspection. In this case, we still observe a declining trend in G with starburst age ($\rho \sim -0.26$, $p \sim 10^{-4}$), however, slightly less pronounced than that found for the total sample ($\rho \sim -0.29$, $p < 10^{-4}$). This implies that the contribution from the tidal features is indeed not consequential and that the time-evolution of the inequality in the light distribution within (post-) starburst galaxies is predominantly an effect of the decaying starburst. This is further supported by Fig. 11(c), where we consider the values of G computed using images in the g band. In this regime, there is more light from younger stars with shorter lifetimes than in the case of the r band, and therefore, the effects of the decaying starburst should be more apparent. As expected, we find a stronger declining trend in G as a function of the starburst age in the g band ($\rho \sim -0.34$, $p < 10^{-4}$). The observed trends in the values of G suggest that the photometric signatures of the most recent starburst, in both the r band and the g band, fade away after ~ 0.5 Gyr since the starburst event.

Our analysis shows that the (post-) starburst galaxies typically have structural properties characteristic of early-type discs (reflected in the values of n , C and M_{20}), with values similar to those found for the star-forming blue-cloud galaxies and somewhat lower than those measured for the quiescent red-sequence galaxies in our control samples. The average structural properties of the sample are largely a result of our sample selection, where we only considered galaxies with high stellar surface mass densities. More interestingly, the lack of evolution in these structural parameters with starburst age, and in particular the values of n , C and M_{20} for the oldest (post-) starbursts, leads us to conclude that the (post-) starburst galaxies do not attain the highly concentrated structure typical for red-sequence galaxies within the first 0.6 Gyr following a merger. This does not necessarily imply that they are not heading towards the red sequence; perhaps further structural evolution is required for the final transition to occur. A similar conclusion was found in a recent study of a subset of the (post-) starburst galaxies used in this work by Rowlands et al. (2015), who found a substantial amount of gas remaining in these galaxies, that could sustain star formation for at least 0.5–1 Gyr after the starburst, suggesting that the PSB galaxies are not yet fully quenched.

We note the following caveats in our conclusions. The galaxies in our control sample of red-sequence galaxies to which we compare, have not necessarily quenched their star formation recently and could have undergone some structural evolution while residing on the red sequence. Furthermore, present-day red-sequence galaxies that experienced their star-formation quenching earlier in the history of the Universe, when the physical conditions were significantly different to the present day, may not be representative of the ‘future’ red-sequence which will form once the residual star-formation within the present-day (post-) starburst galaxies have ceased. Further study of (post-) starburst galaxies at higher redshifts, including those with $t_{\text{SB}} > 0.6$ Gyr, as well as a more extended sample of red-sequence galaxies, and a quantitative comparison with previous studies are underway.

7 SUMMARY

It is thought that the observed bimodality in galaxy properties could be a result of a transformation from gas-rich actively star-forming galaxies to passively evolving galaxies devoid of gas, following some star formation quenching event (e.g. Bell et al. 2004; Faber

et al. 2007). In this work, we focused on one of the possible quenching routes, involving a transition through a PSB phase subsequent to a gas-rich merger event (e.g. Sanders et al. 1988; Wild et al. 2009; Yesuf et al. 2014). Our study involved the morphological and structural analysis of an evolutionary sample of 335 bulge-galaxies with the strongest (post-) starburst signatures within the SDSS DR7, with equal number of galaxies per unit starburst age (t_{SB}) with $t_{\text{SB}} < 0.6$ Gyr. The unique sample properties provided an opportunity for a statistical study of a sequence of galaxies evolving through the short-lasting phase following a nuclear starburst. For the analysis, we used standard measures of galaxy structure found in the literature as well as a newly introduced morphological indicator designed to trace faint asymmetric tidal features in the outskirts of the galaxies. Below, we list the main results of our study and their implications.

(i) The new measure of morphological asymmetry introduced in this work provides a robust method for probing asymmetric tidal features in the outskirts of galaxies and allows for an effective detection of galaxies in late stages of a merger. Within our test sample, the shape asymmetry criterion $A_S > 0.2$ identifies 95 per cent (19/20) of galaxies with faint tidal features and 60 per cent (6/10) of those with low/moderate morphological disturbance. Applied to our (post-) starburst sample, $A_S > 0.2$ detects 45 per cent of the galaxies with the youngest starbursts ($t_{\text{SB}} < 0.1$ Gyr), a fraction which is in a remarkable agreement with that obtained by visual inspection of the images.

(ii) The fraction of (post-) starburst galaxies which show features characteristic of post-mergers declines with the starburst age. For the morphologically disturbed (post-) starburst galaxies, the measured values of A_S decrease with the starburst age, with $A_S \sim 0.2$ for most galaxies with starbursts older than 0.5 Gyr. These trends fit qualitatively to the galaxy merger picture, where the morphological disturbance of the merger remnant gradually fades away as the remnant evolves through the dynamically cold post-merger phase (see e.g. Lotz et al. 2008).

(iii) Assuming that morphological disturbance in galaxies is an indicator of a past merger, both visual classification and the automated approach (using the shape asymmetry) suggest that at least 45 per cent of the youngest (post-) starburst galaxies in the sample ($t_{\text{SB}} < 0.1$ Gyr) have originated in a merger.

(iv) The insignificant age-evolution of their central concentration, light profiles or the extent of the brightest regions, suggests that (post-) starburst galaxies do not attain the structure of the fully-quenched galaxies within the first 0.6 Gyr after the starburst. Rather, their structure bears more resemblance to that of the continuously star-forming galaxies. Further structural evolution is required before the PSB galaxies can become comparable to galaxies populating the present-day red sequence.

ACKNOWLEDGEMENTS

The authors would like to thank the anonymous referee for thorough reading of the manuscript and useful comments and suggestions, which led to clarification of several important points in the text.

MMP and VW acknowledge support from the European Career Reintegration Grant Phiz-Ev (P.I. VW). VW, KR and JM-A acknowledge support from the European Research Council Starting Grant SEDMorph (P.I. VW). CJW acknowledges support through the Marie Curie Career Integration Grant 303912. PHJ acknowledges the support of the Academy of Finland grant 1274931.

Funding for the SDSS and SDSS-II has been provided by the Alfred P. Sloan Foundation, the Participating Institutions, the National Science Foundation, the US Department of Energy, the National Aeronautics and Space Administration, the Japanese Monbukagakusho, the Max Planck Society, and the Higher Education Funding Council for England. The SDSS web site is <http://www.sdss.org/>.

The SDSS is managed by the Astrophysical Research Consortium for the Participating Institutions. The Participating Institutions are the American Museum of Natural History, Astrophysical Institute Potsdam, University of Basel, University of Cambridge, Case Western Reserve University, University of Chicago, Drexel University, Fermilab, the Institute for Advanced Study, the Japan Participation Group, Johns Hopkins University, the Joint Institute for Nuclear Astrophysics, the Kavli Institute for Particle Astrophysics and Cosmology, the Korean Scientist Group, the Chinese Academy of Sciences (LAMOST), Los Alamos National Laboratory, the Max-Planck-Institute for Astronomy (MPIA), the Max-Planck-Institute for Astrophysics (MPA), New Mexico State University, Ohio State University, University of Pittsburgh, University of Portsmouth, Princeton University, the United States Naval Observatory, and the University of Washington.

REFERENCES

- Abazajian K. N. et al., 2009, *ApJS*, 182, 543
 Abraham R. G., Valdes F., Yee H. K. C., van den Bergh S., 1994, *ApJ*, 432, 75
 Abraham R. G., Tanvir N. R., Santiago B. X., Ellis R. S., Glazebrook K., van den Bergh S., 1996, *MNRAS*, 279, L47
 Abraham R. G., van den Bergh S., Nair P., 2003, *ApJ*, 588, 218
 Arnouts S. et al., 2007, *A&A*, 476, 137
 Arp H., 1966, *Atlas of Peculiar Galaxies*. California Inst. Technology, Pasadena
 Atkinson A. M., Abraham R. G., Ferguson A. M. N., 2013, *ApJ*, 765, 28
 Baldry I. K., Balogh M. L., Bower R. G., Glazebrook K., Nichol R. C., Bamford S. P., Budavari T., 2006, *MNRAS*, 373, 469
 Balogh M. L., Morris S. L., 2000, *MNRAS*, 318, 703
 Balogh M. L., Morris S. L., Yee H. K., Carlberg R. G., Ellingson E., 1999, *ApJ*, 527, 54
 Balogh M. L., Miller C., Nichol R., Zabludoff A., Goto T., 2005, *MNRAS*, 360, 587
 Barnes J. E., 1988, *ApJ*, 331, 699
 Barnes J. E., Hernquist L., 1991, *ApJ*, 370, L65
 Barton E. J., Geller M. J., Kenyon S. J., 2000, *ApJ*, 530, 660
 Bekki K., Shioya Y., Couch W. J., 2001, *ApJ*, 547, L17
 Bekki K., Couch W. J., Shioya Y., Vazdekis A., 2005, *MNRAS*, 359, 949
 Bell E. F. et al., 2004, *ApJ*, 608, 752
 Bernes J. E., Hernquist L., 1996, *ApJ*, 471, 115
 Bershadly M. A., Jangren A., Conselice C. J., 2000, *AJ*, 119, 2645
 Bertin E., Arnouts S., 1996, *A&AS*, 117, 393
 Bery R., Burnell J., 2000, *The Handbook of Astronomical Image Processing*. Willmann-Bell, Richmond, VA
 Birnboim Y., Dekel A., Neistein E., 2007, *MNRAS*, 380, 339
 Blake C. et al., 2004, *MNRAS*, 355, 713
 Blanton M. R. et al., 2001, *AJ*, 121, 2358
 Bruzual G., Charlot S., 2003, *MNRAS*, 344, 1000
 Bundy K. et al., 2005, *ApJ*, 651, 120
 Cameron E., 2010, *PASA*, 28, 128
 Conselice C., 2003, *ApJS*, 147, 1
 Conselice C. J., Bershadly M. A., Jangren A., 2000, *ApJ*, 529, 886
 Cortese L., Hughes T. M., 2009, *MNRAS*, 400, 1225
 Couch W. J., Sharples R. M., 1987, *MNRAS*, 229, 423
 Cox T. J., Jonsson P., Primack J. R., Somerville R. S., 2006, *MNRAS*, 373, 1013
 Da Costa G. S., 1992, in Howell S. B., ed., *ASP Conf. Ser. Vol. 23, Astronomical CCD Observing and Reduction Techniques*. Astron. Soc. Pac., San Francisco, p. 90
 Darg D. W. et al., 2010, *MNRAS*, 401, 1552
 de Lucia G., Poggianti B. M., Halliday C., Milvang-Jensen B., Noll S., Smail I., Zaritsky D., 2009, *MNRAS*, 400, 68
 de Ravel L. et al., 2009, *A&A*, 498, 379
 Di Matteo T., Springel V., Hernquist L., 2005, *Nature*, 433, 604
 Dressler A., Gunn J. E., 1983, *ApJ*, 270, 7
 Dressler A., Smail I., Poggianti B. M., Butcher H., Couch W. J., Ellis R. S., Oemler A., Jr, 1999, *ApJS*, 122, 51
 Dressler A., Oelmer A., Jr, Poggianti B. M., Gladders M. D., Abramson L., Vulcani B., 2013, *ApJ*, 770, 62
 Ellison S. L., Mendel J. T., Patton D. R., Scudder J. M., 2013, *MNRAS*, 435, 3627
 Faber S. M. et al., 2007, *ApJ*, 665, 265
 Freedman Woods D., Geller M. J., Kurtz M. J., Westra E., Fabricant D. G., Dell'Antonio I., 2010, *AJ*, 139, 1857
 Glasser G. J., 1962, *J. Am. Stat. Assoc.*, 57, 648
 Goto T., 2005, *MNRAS*, 357, 937
 Graham A. W., Driver S. P., 2005, *PASA*, 22, 118
 Gunn J. E., Gott J. R., III, 1972, *ApJ*, 176, 1
 Hernández-Toledo H. M., Vázquez-Mata J. A., Martínez-Vázquez L. A., Avila Reese V., Méndez-Hernández H., Ortega-Esbrí S., Núñez J. P. M., 2008, *AJ*, 136, 2115
 Hopkins P. F., Hernquist L., 2010, *MNRAS*, 402, 985
 Hopkins P. F., Hernquist L., Cox T. J., Di Matteo T., Robertson B., Springel V., 2006, *ApJS*, 163, 1
 Hopkins P. F., Bundy K., Hernquist L., Ellis R. S., 2007, *ApJ*, 659, 976
 Hopkins P. F., Hernquist L., Cox T. J., Kereš D., 2008, *ApJS*, 175, 356
 Isserstedt J., Schindler R., 1986, *A&A*, 167, 11
 Johansson P. H., Naab T., Burkert A., 2009, *ApJ*, 690, 802
 Johansson P. H., Naab T., Ostriker J. P., 2012, *ApJ*, 574, 115
 Kauffmann G. et al., 2003a, *MNRAS*, 341, 33
 Kauffmann G. et al., 2003b, *MNRAS*, 341, 54
 Kaviraj S., Kirkby L. A., Silk J., Sarzi M., 2007, *MNRAS*, 382, 960
 Kent S. M., 1985, *ApJS*, 59, 115
 Lackner C. N. et al., 2014, *AJ*, 148, 137
 Lintott C. J. et al., 2008, *MNRAS*, 389, 1179
 Lintott C. J. et al., 2011, *MNRAS*, 410, 166
 Lotz J. M., Primack J., Madau P., 2004, *AJ*, 128, 163
 Lotz J. M., Jonsson P., Cox T. J., Primack J. R., 2008, *MNRAS*, 391, 1137
 Ma C. J., Ebeling H., Donovan D., Barrett E., 2008, *ApJ*, 688, 945
 Martig M., Bournaud F., Teyssier R., Dekel A., 2009, *ApJ*, 707, 250
 Mendel J. T., Simard L., Ellison S. L., Patton D. R., 2013, *MNRAS*, 429, 2212
 Naab T., Burkert A., 2003, *ApJ*, 597, 893
 Noeske et al., 2007, *ApJ*, 660, L43
 Nolan L. A., Raychaudhury S., Kabán A., 2007, *MNRAS*, 375, 381
 Patton D. R. et al., 2002, *ApJ*, 565, 208
 Petrosian V., 1976, *ApJ*, 209, L1
 Poggianti B. M., Smail I., Dressler A., Couch W. J., Barger A. J., Butcher H., Ellis R. S., Oemler A., Jr, 1999, *ApJ*, 518, 576
 Poggianti B. M. et al., 2009, *ApJ*, 693, 112
 Quintero A. D. et al., 2003, *ApJ*, 602, 190
 Reichard T. A., Heckman T. M., Rudnick G., Brinchmann J., Kauffmann G., 2008, *ApJ*, 677, 186
 Reichard T. A., Heckman T. M., Rudnick G., Brinchmann J., Kauffmann G., Wild V., 2009, *ApJ*, 691, 1005
 Rix H. W., Zaritsky D., 1995, *ApJ*, 447, 82
 Rowlands K., Wild V., Nesvadba N., Sibthorpe B., Mortier A., Lehnert M., da Cunha E., 2015, *MNRAS*, 448, 258
 Sanders D. B., Soifer B. T., Elias J. H., Madore B. F., Matthews K., Neugebauer G., Scoville N. Z., 1988, *ApJ*, 325, 74
 Schawinski K. et al., 2014, *MNRAS*, 440, 889
 Schweizer F., 1982, *ApJ*, 252, 455
 Schweizer F., Whitmore B. C., Rubin V. C., 1983, *AJ*, 88, 909

- Sérsic J. L., 1963, *Bol. Asociacion Argentina Astron.*, 6, 41
- Shade D., Lilly S. J., Crampton D., Hammer F., Le Fevre O., Tresse L., 1995, *ApJ*, 451, L1
- Simard L., Mendel J. T., Patton D. R., Ellison S. L., McConnell A. W., 2011, *ApJS*, 196, 11
- Snyder G. F., Cox T. J., Hayward C. C., Hernquist L., Jonsson P., 2011, *ApJ*, 741, 77
- Strateva I. et al., 2001, *AJ*, 122, 1861
- Takamiya M., 1999, *ApJS*, 122, 109
- Toomre A., Toomre J., 1972, *ApJ*, 178, 623
- Tran K. V. H., Franx M., Illingworth G. D., van Dokkum P., Kelson D. D., Magee D., 2004, *ApJ*, 609, 683
- Villforth C. et al., 2014, *MNRAS*, 439, 3342
- von der Linden A., Wild V., Kauffmann G., White S. D. M., Weinmann S., 2010, *MNRAS*, 404, 1231
- Vorontsov-Velyaminov B. A., 1959, *Atlas and Catalog of Interacting Galaxies*. Sternberg Institute, Moscow State Univ.
- Wen Z. Z., Zheng X. Z., Xia An F., 2014, *ApJ*, 787, 130
- Wild V., Kauffmann G., Heckman T., Charlot S., Lemson G., Brinchmann J., Reichard T., Pasquali A., 2007, *MNRAS*, 381, 543
- Wild V., Walcher C. J., Johansson P. H., Tresse L., Charlot S., Pollo A., Le Fevre O., de Ravel L., 2009, *MNRAS*, 395, 144
- Wild V., Heckman T., Charlot S., 2010, *MNRAS*, 405, 933
- Wong O. I. et al., 2012, *MNRAS*, 420, 1684
- Yan R., Newman J. A., Faber S. M., Konidaris N., Koo D., Davis M., 2006, *ApJ*, 648, 281
- Yang Y., Zabludoff A. I., Zaritsky D., Mihos J. C., 2008, *ApJ*, 688, 945
- Yasuda N. et al., 2001, *AJ*, 122, 1104
- Yesuf H. M., Faber S. M., Trump J. R., Koo D. C., Fang J. J., Liu F. S., Wild V., Hayward C. C., 2014, *ApJ*, 792, 84
- Zabludoff A. I., Zaritsky D., Lin H., Tucker D., Hashimoto Y., Sackett P. D., Oemler A., Kirshner R. P., 1996, *ApJ*, 466, 104
- Zepf S. E., Koo D. C., 1989, *ApJ*, 337, 34
- Zwaan M. A., Kuntschner H., Pracy M. B., Couch W. J., 2013, *MNRAS*, 432, 492

SUPPORTING INFORMATION

Additional Supporting Information may be found in the online version of this article:

nbulge.compareNYU.pdf
n_NSA_vs.NYU.pdf

(<http://mnras.oxfordjournals.org/lookup/suppl/doi:10.1093/mnras/stv2878/-/DC1>)

Please note: Oxford University Press is not responsible for the content or functionality of any supporting materials supplied by the authors. Any queries (other than missing material) should be directed to the corresponding author for the article.

APPENDIX A: THE TEST SAMPLE

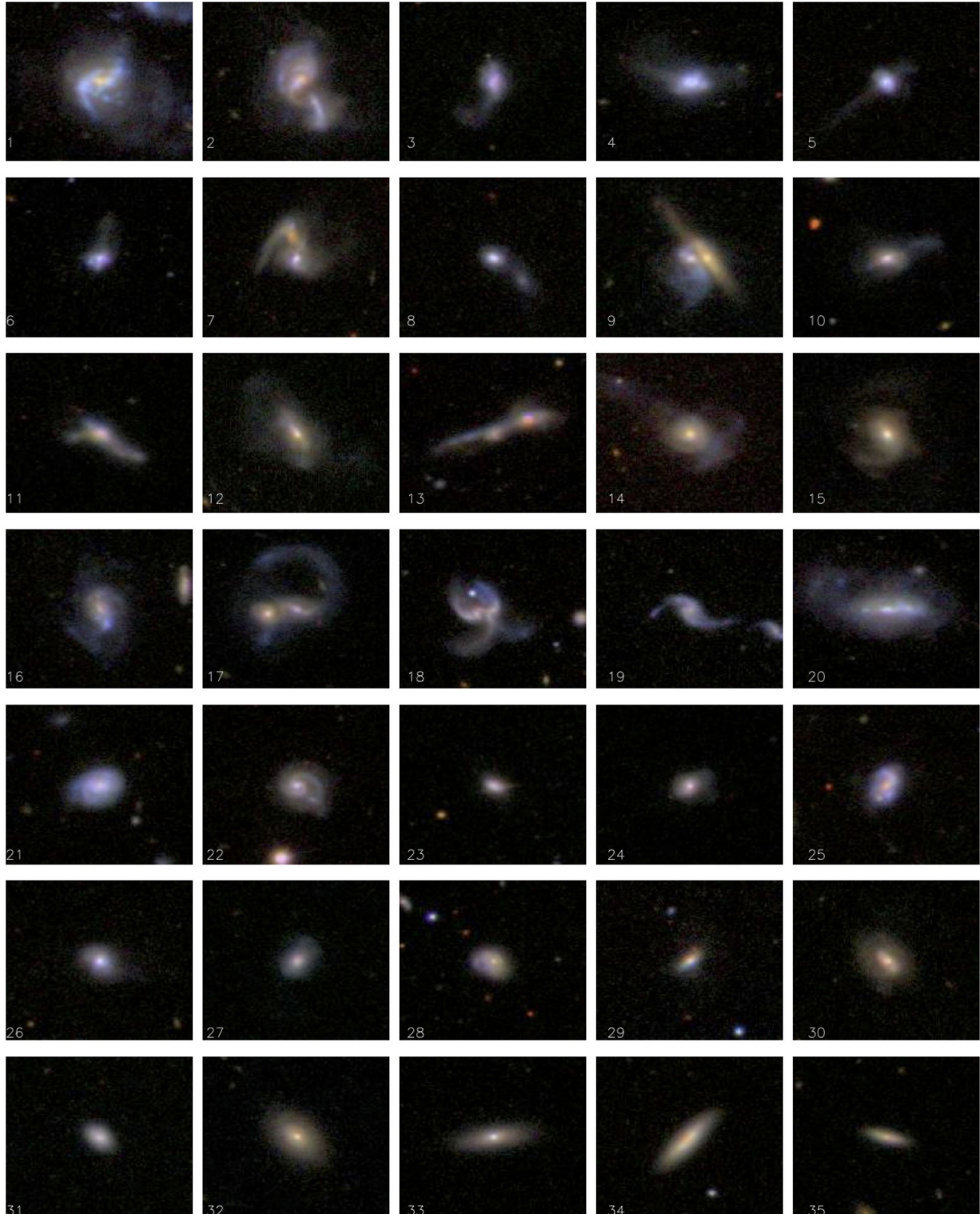


Figure A1. Three-colour images of the PSB galaxies in the test sample, including objects with high morphological disturbance (1–20), low morphological disturbance (21–30) and regular morphology (31–35).

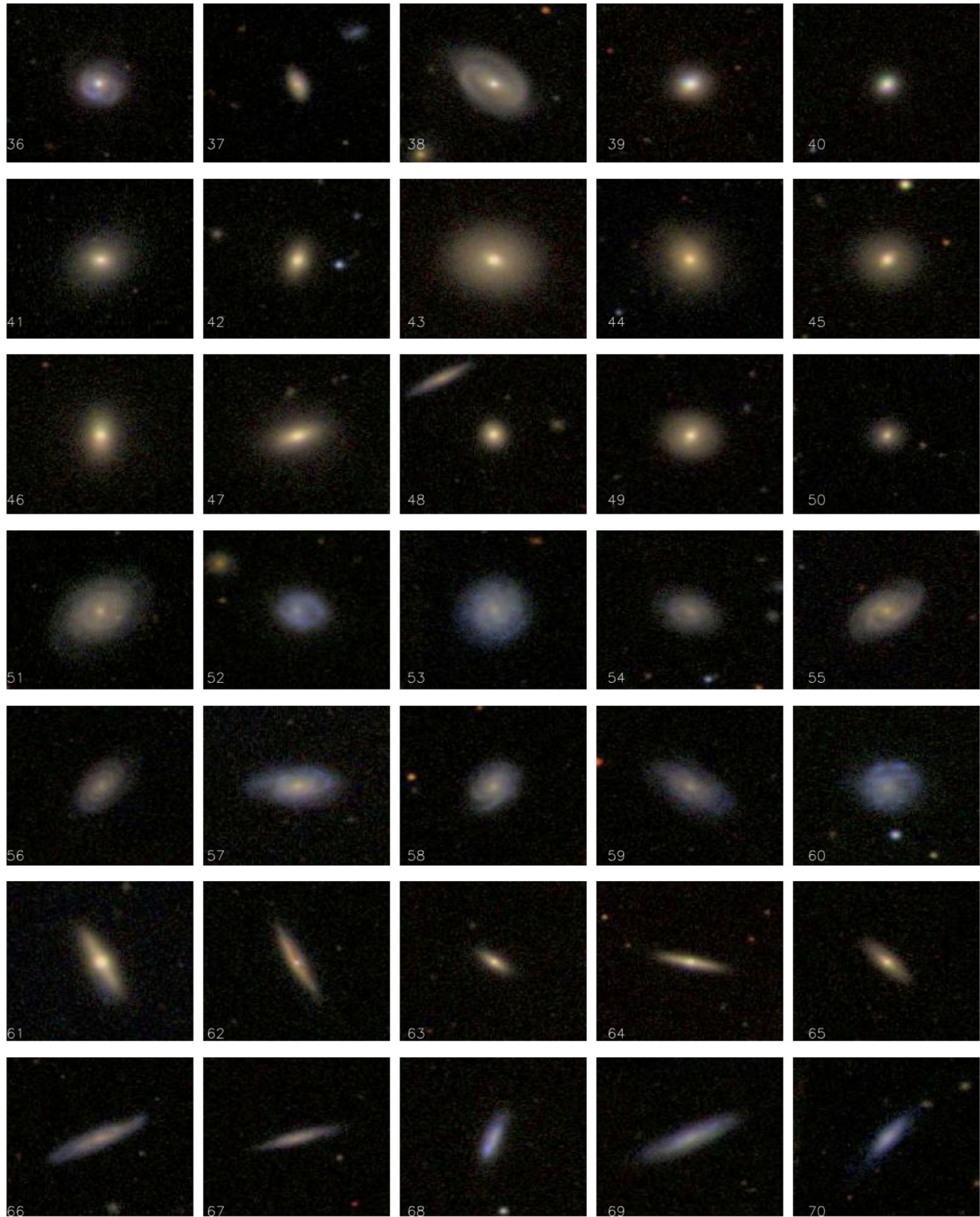


Figure A2. Three-colour images of the remaining objects in the test sample: PSB galaxies with regular morphology (36–40) and normal galaxies, including early-types (41–50; 61–65) and late-types (51–60; 67–70).

This paper has been typeset from a $\text{\TeX}/\text{\LaTeX}$ file prepared by the author.