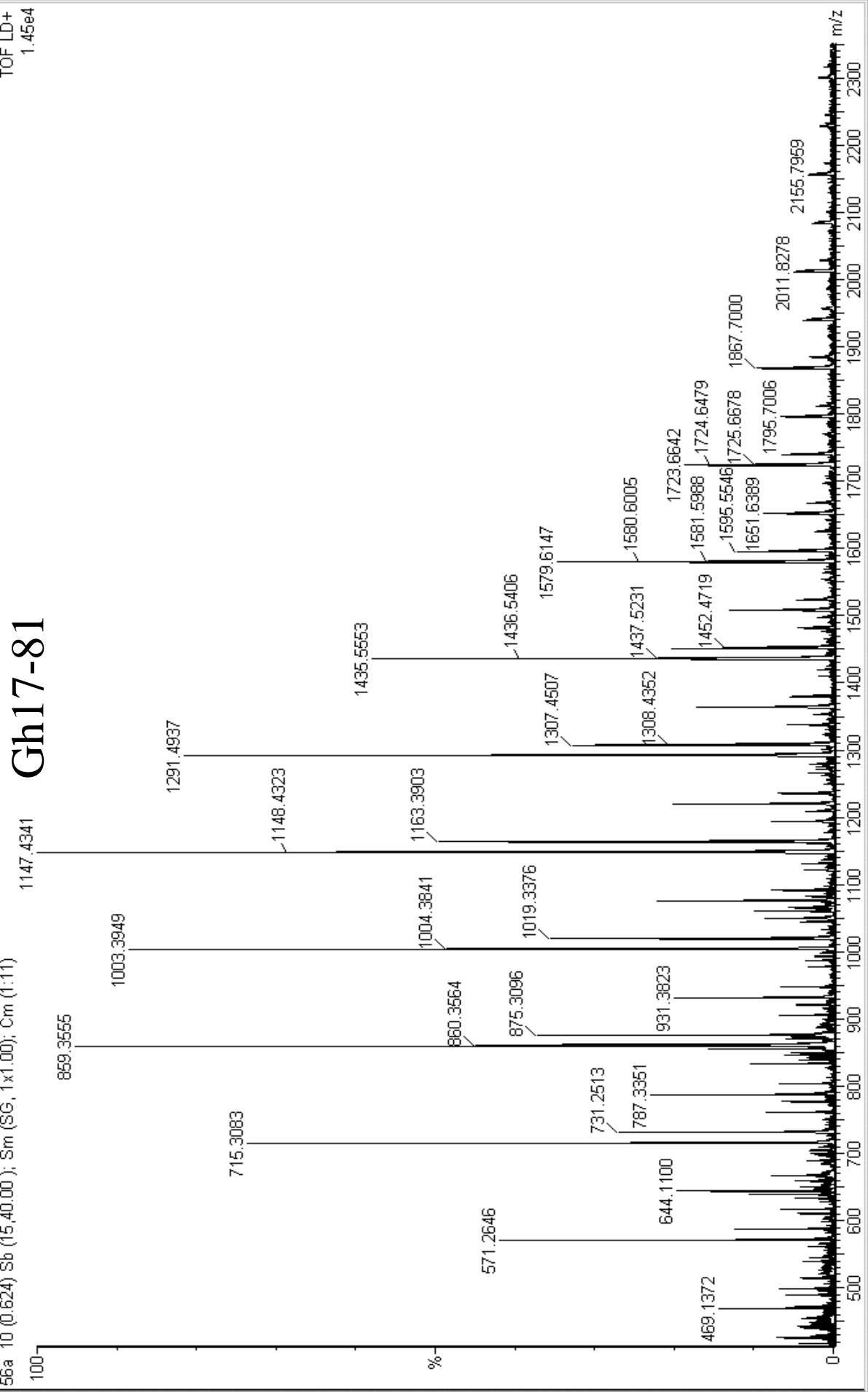


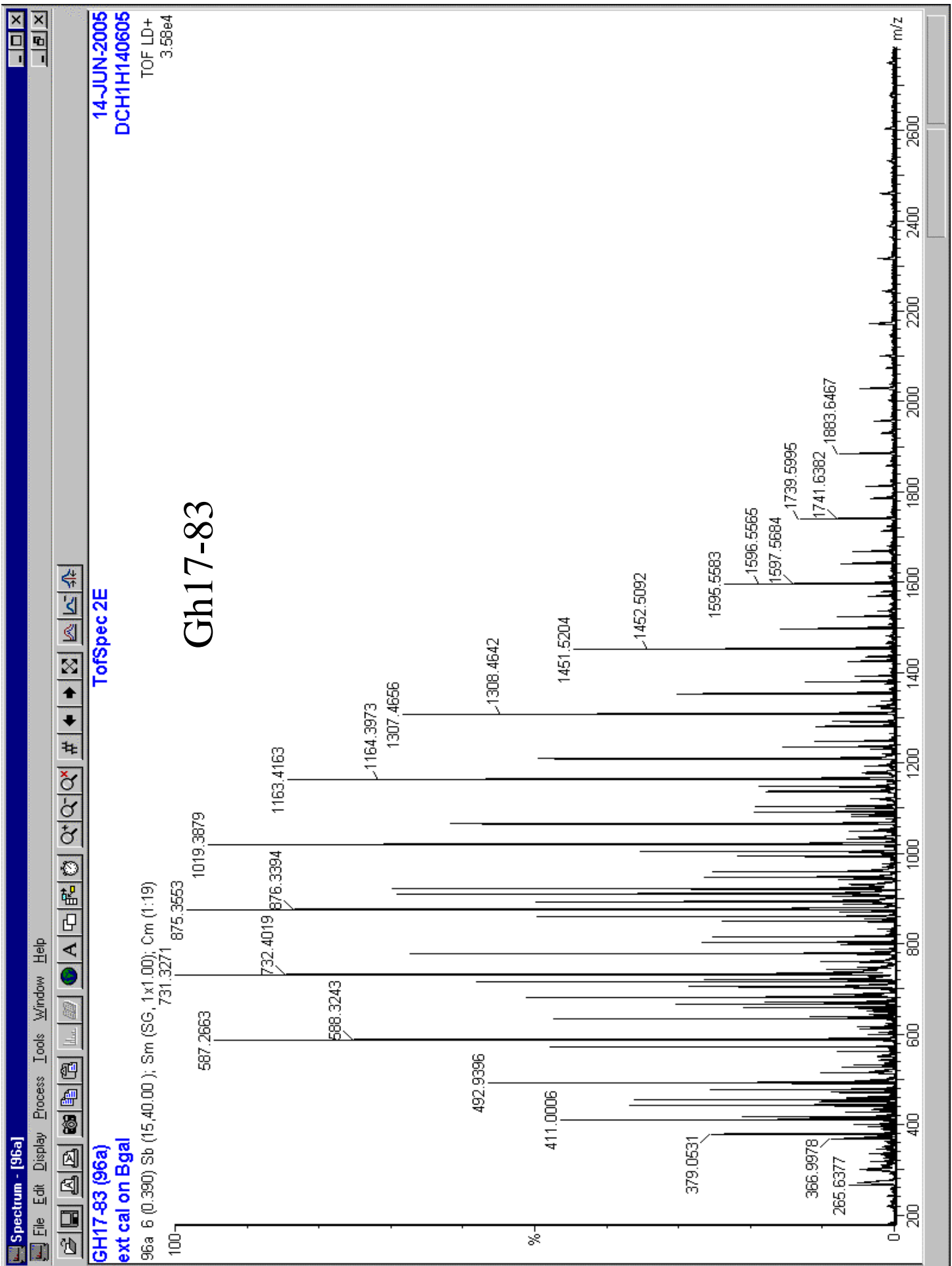
13-JUN-2005
DCH1H130605
TOF LD+
1.45e4

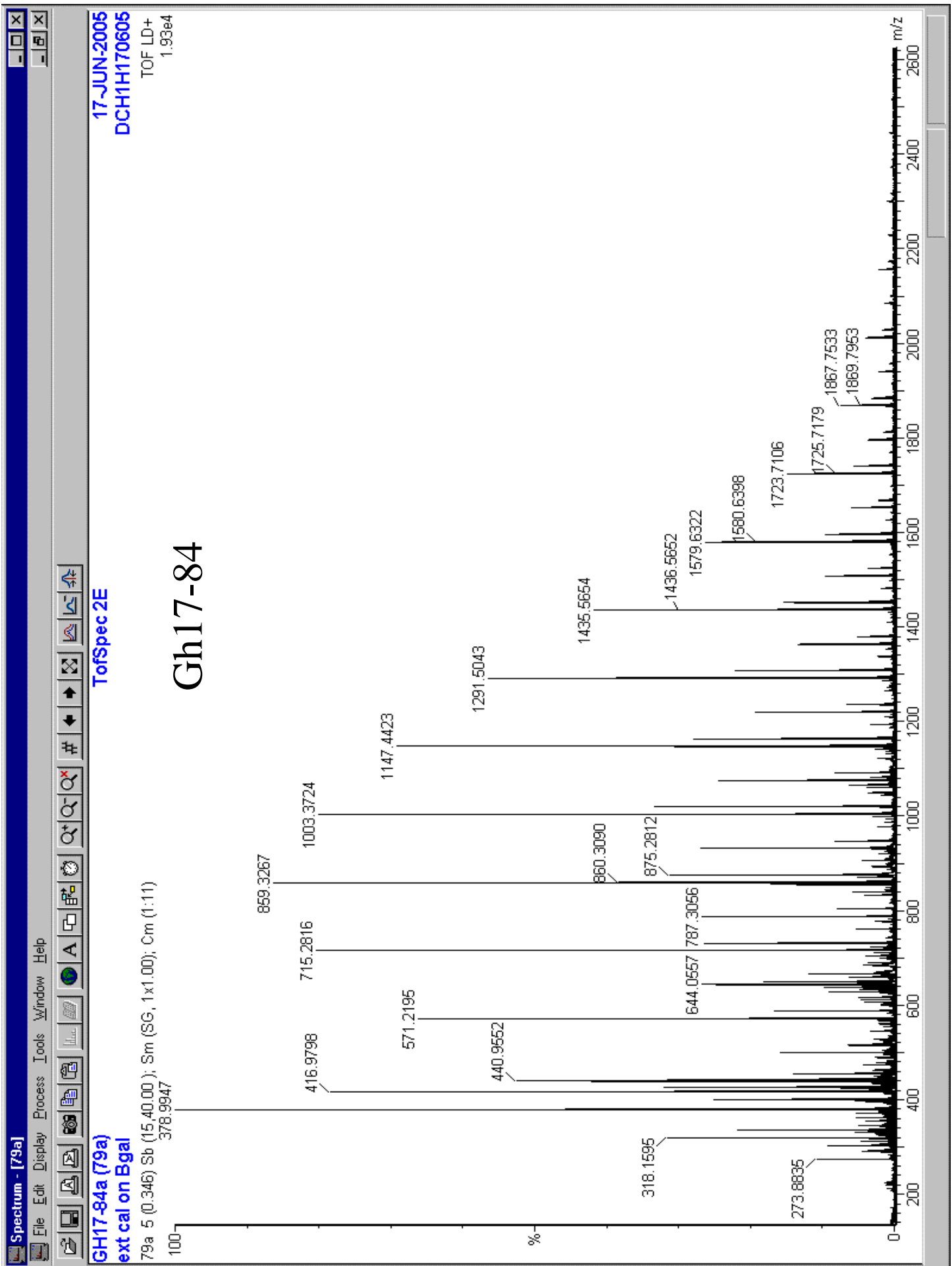
TofSpec 2E

Gh17-81
ext cal on Bgal

56a 10 (0.624) Sb (15.40.00); Sm (SG, 1x1.00); Cm (1:11)





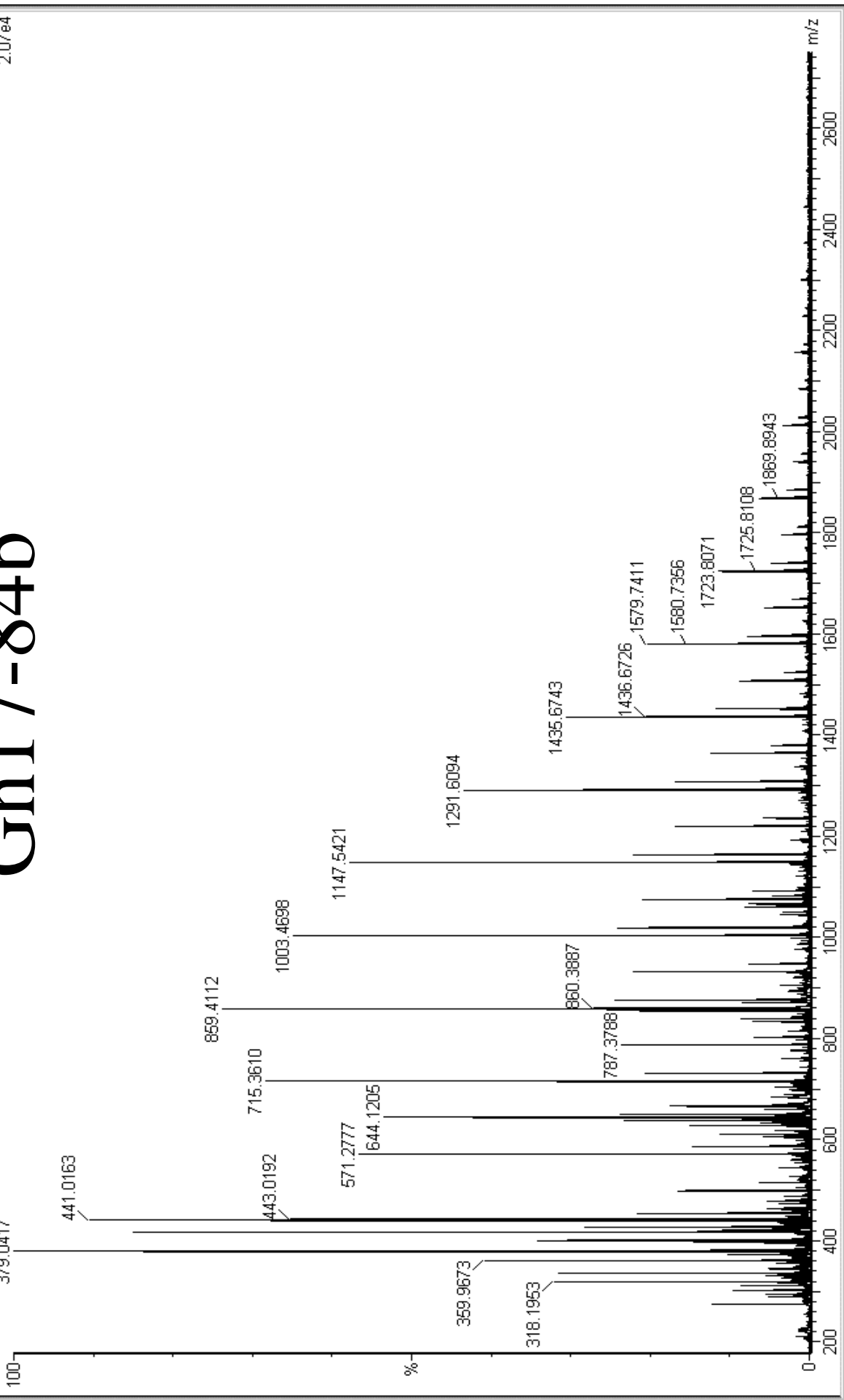


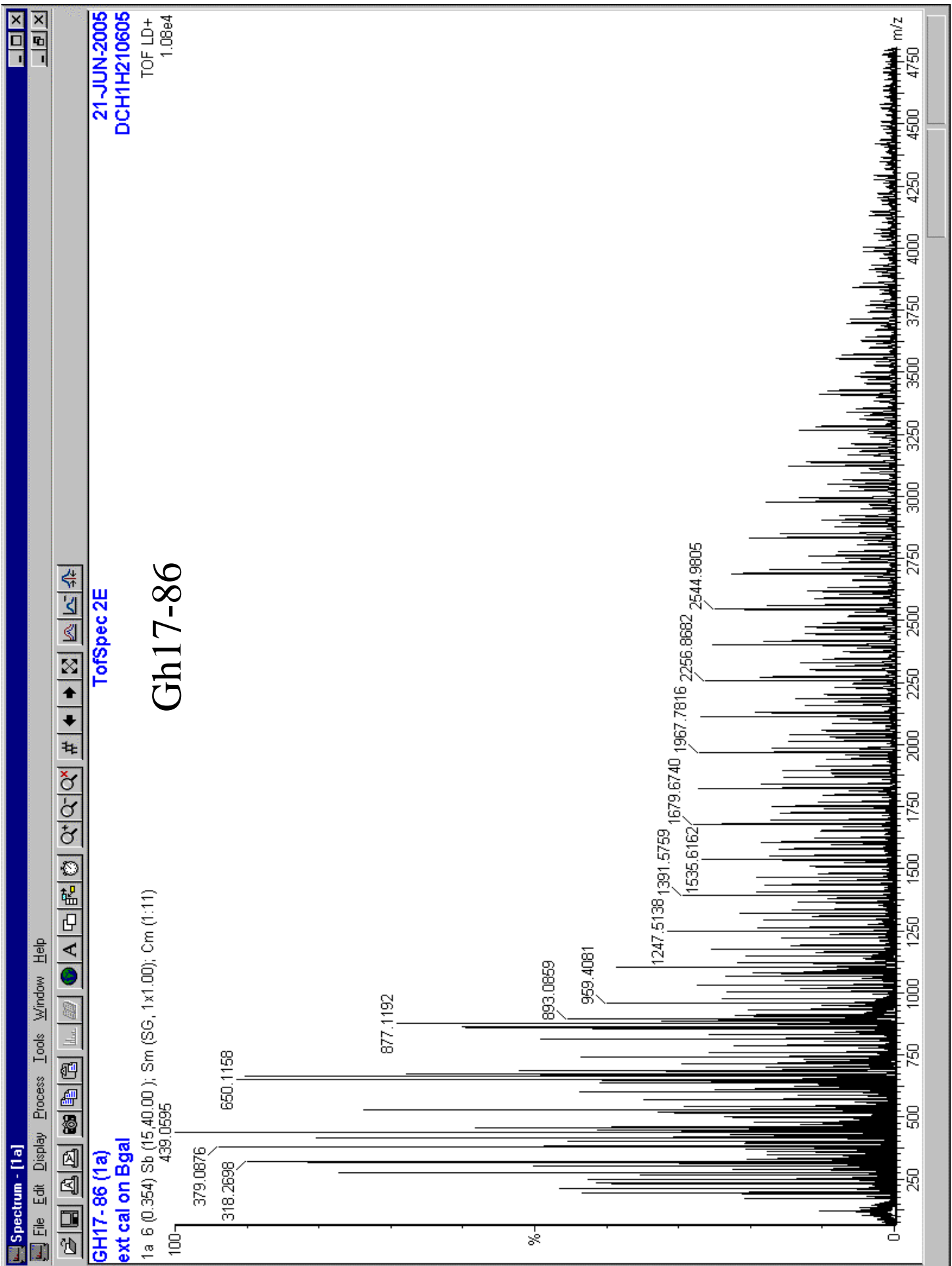
17 JUN-2005
 DCH1H170605
 TOF LD+
 2.07e4

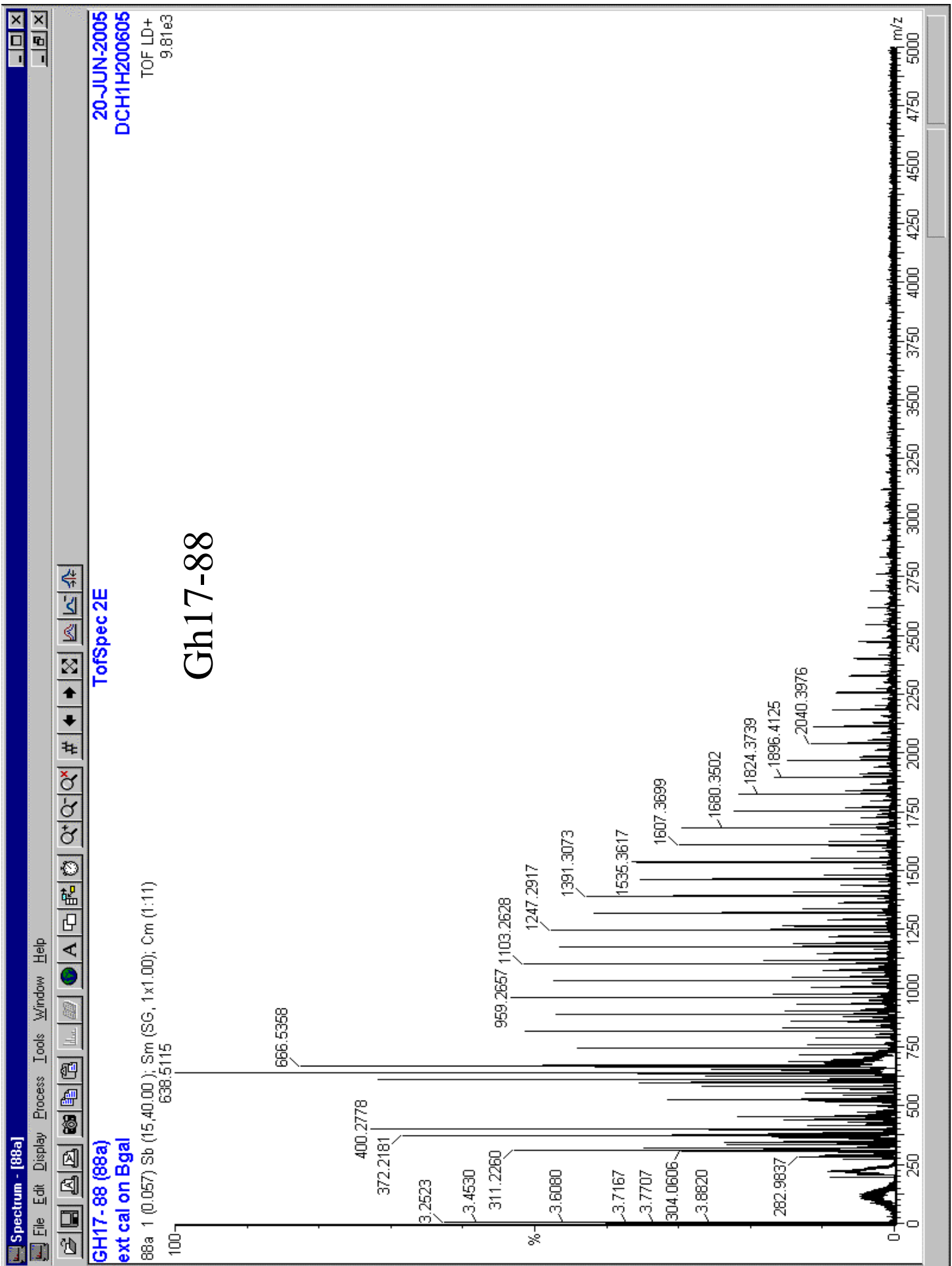
TofSpec 2E

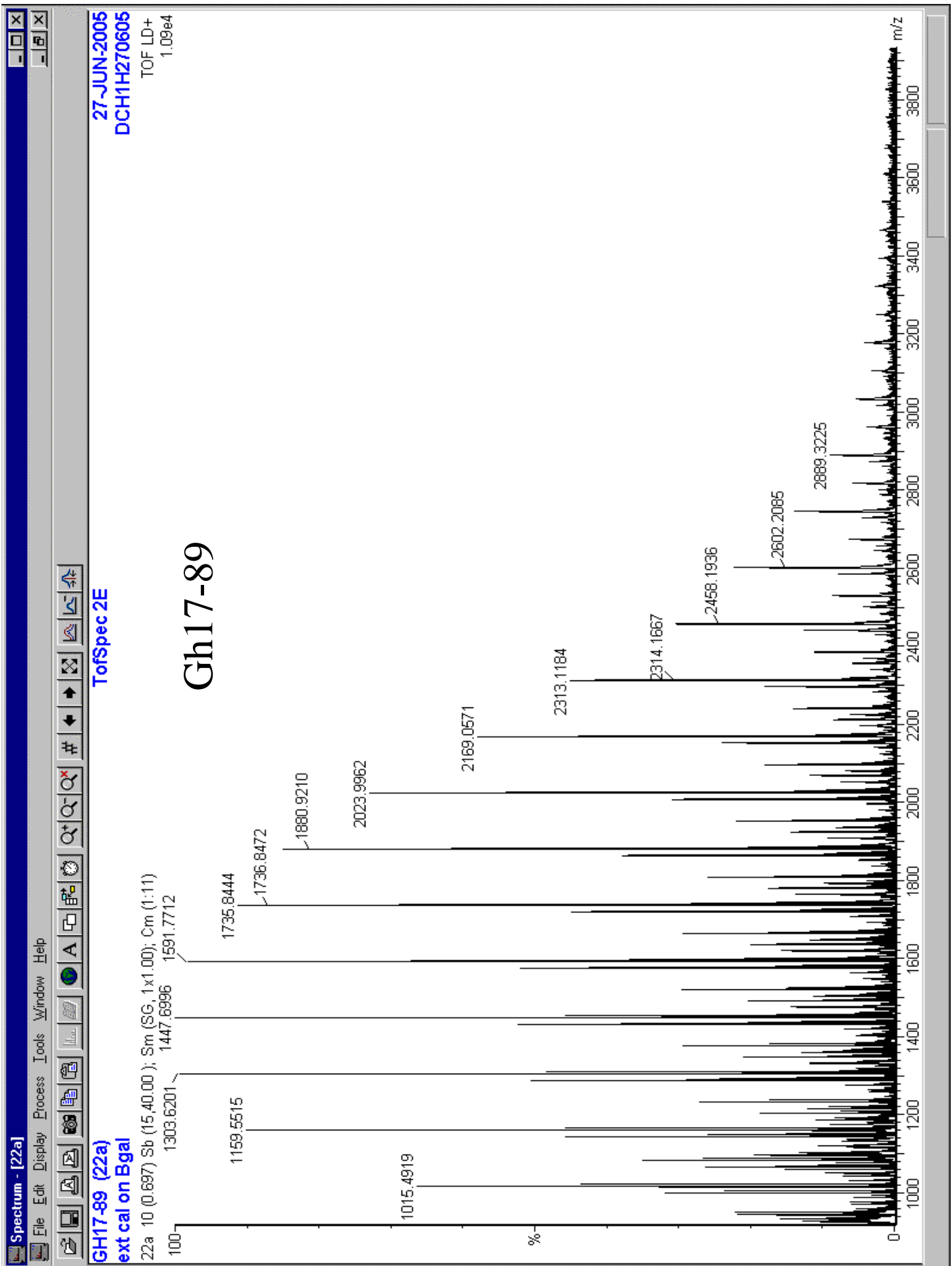
Gh17-84b

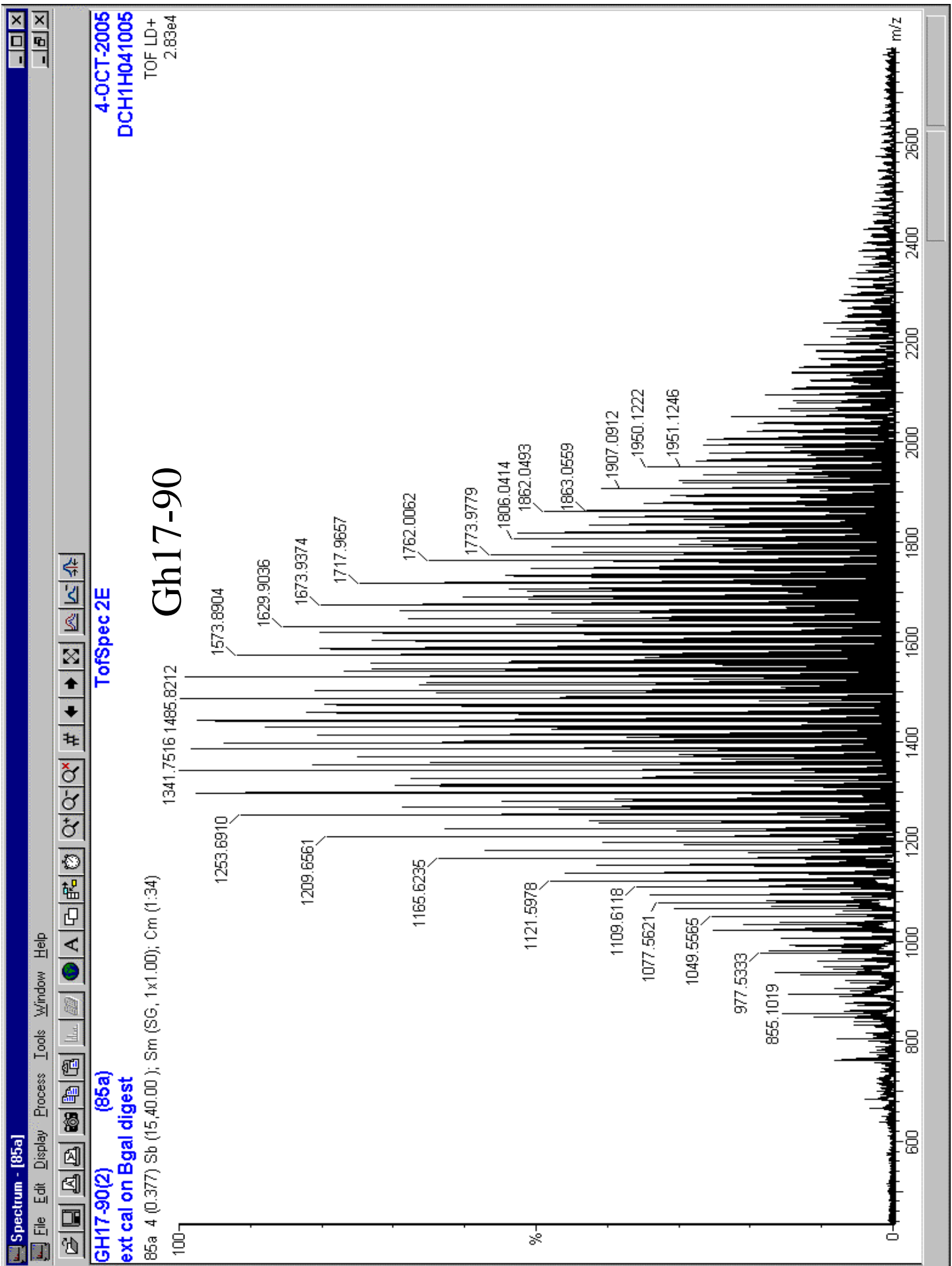
GH17-84b (89a)
 ext cal on Bgal
 89a 5 (0.320) Sb (15.40.00); Sm (SG, 1x1.00); Cm (1:11)
 379.0417

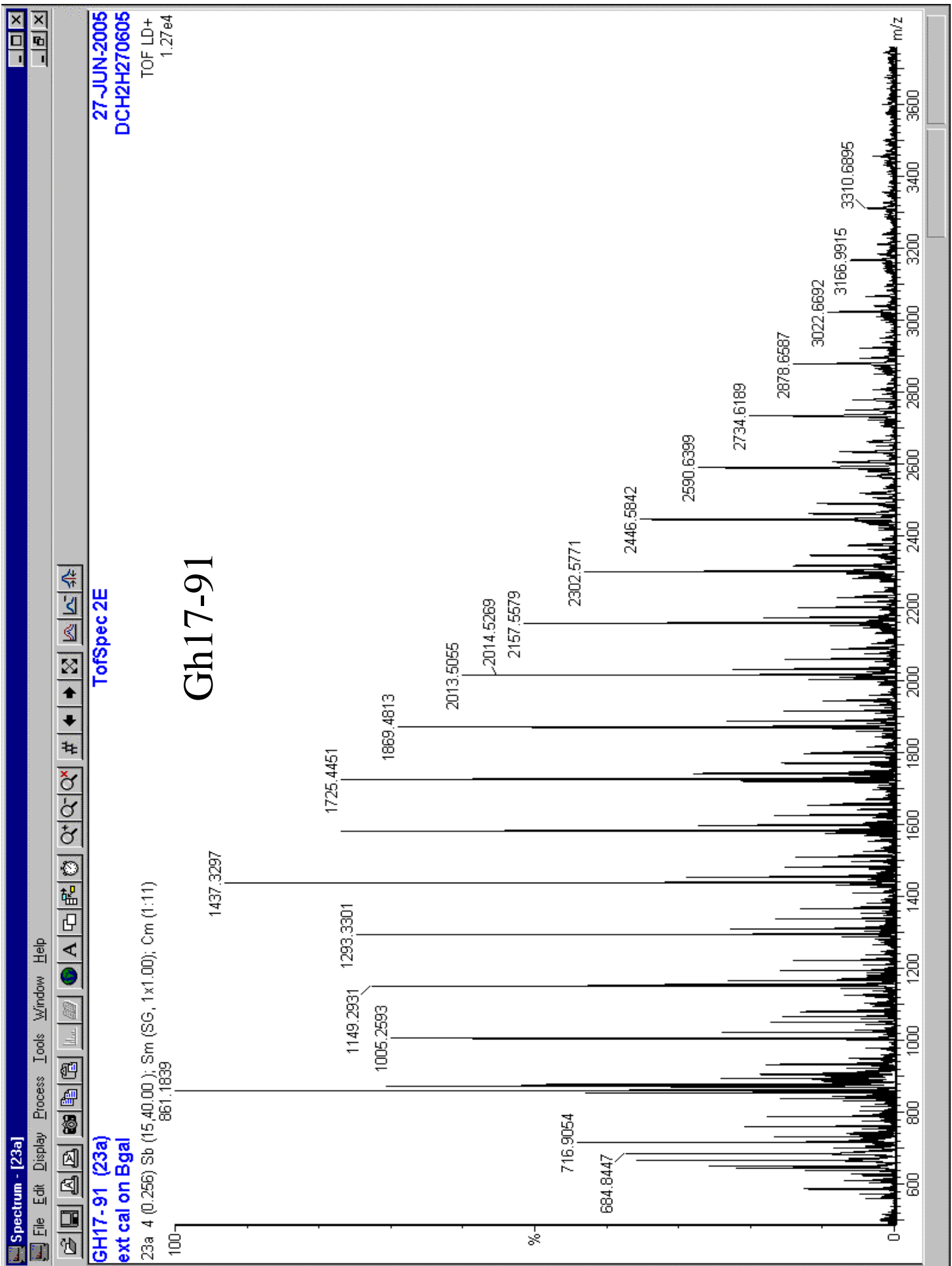


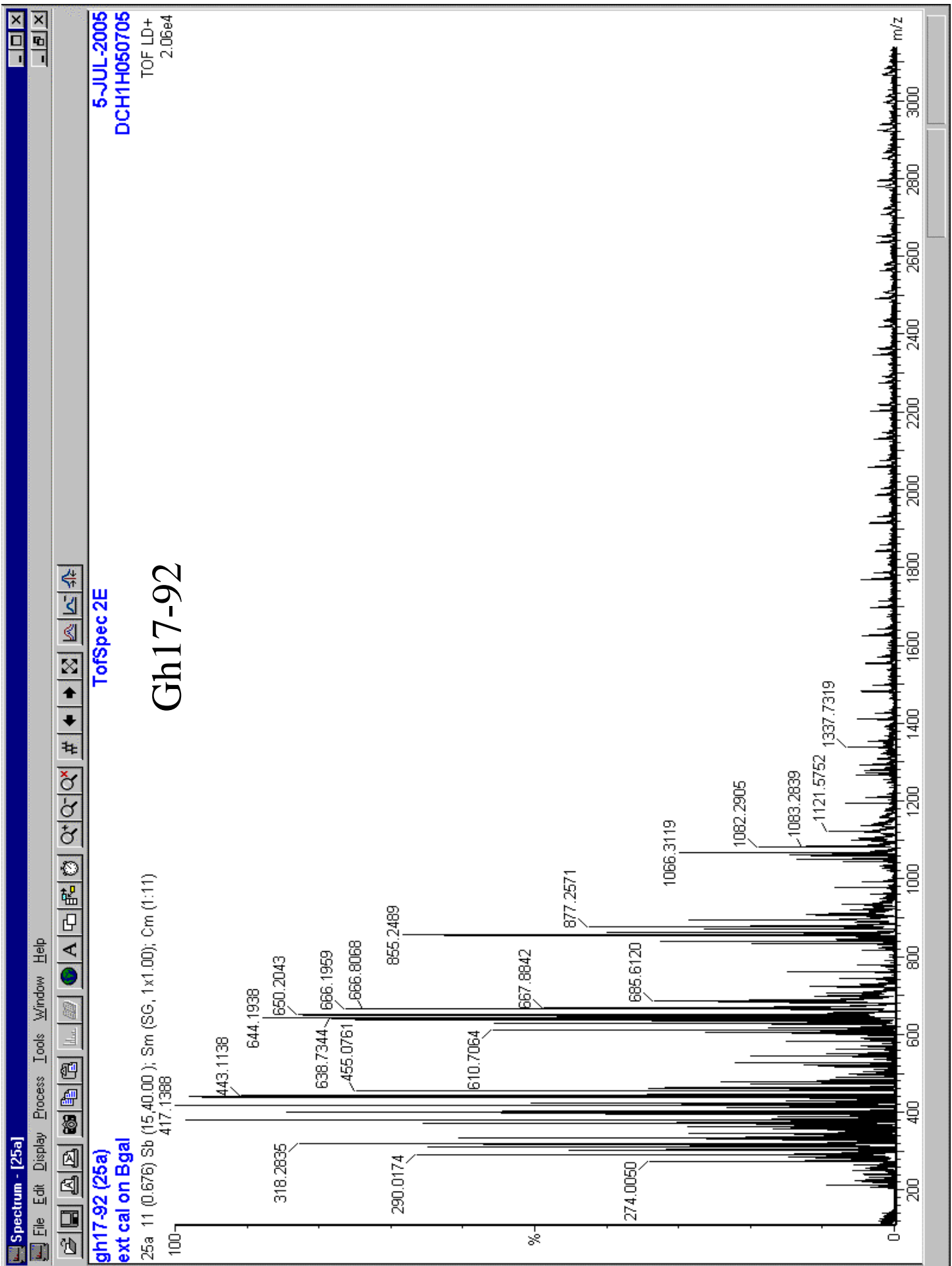










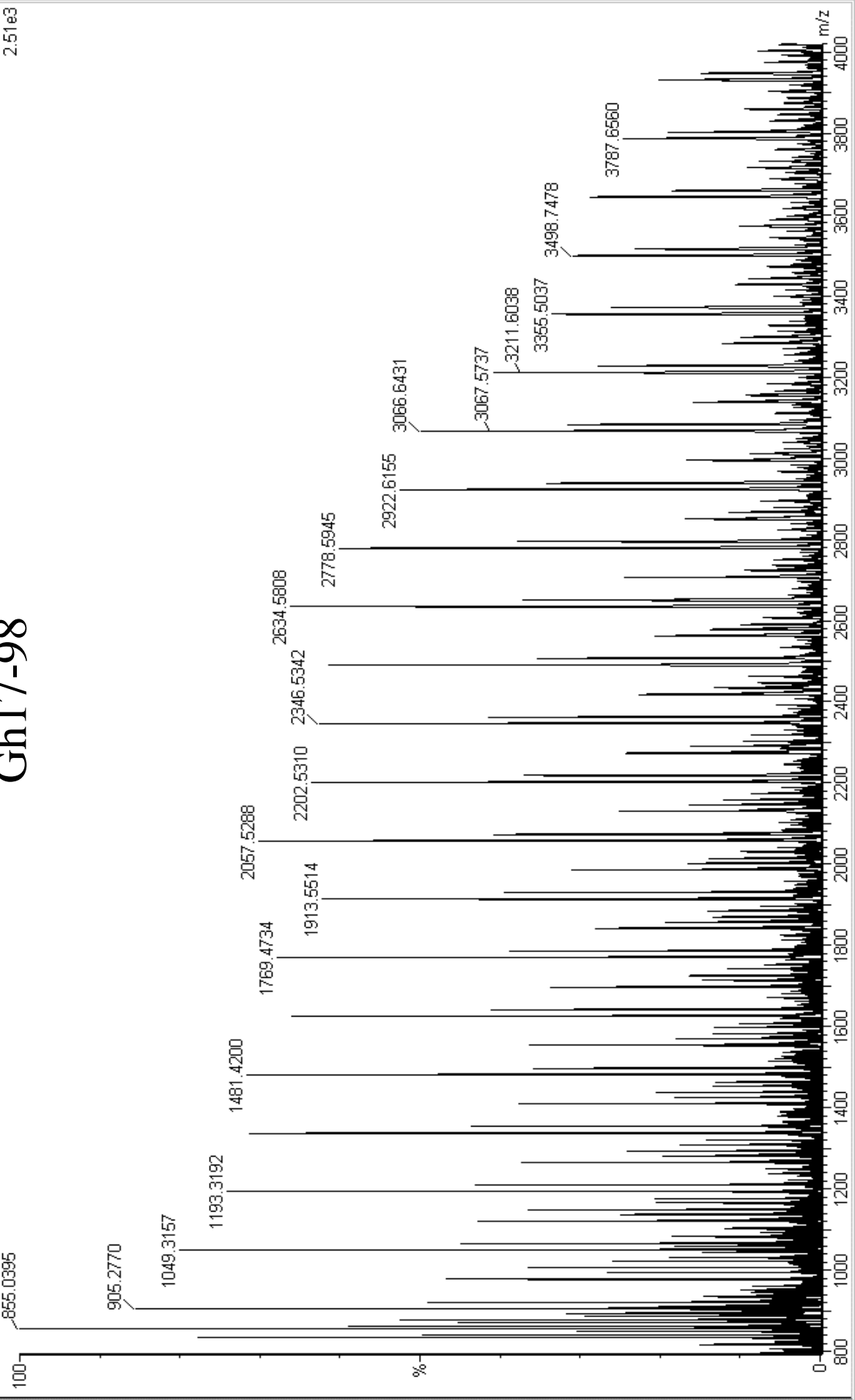


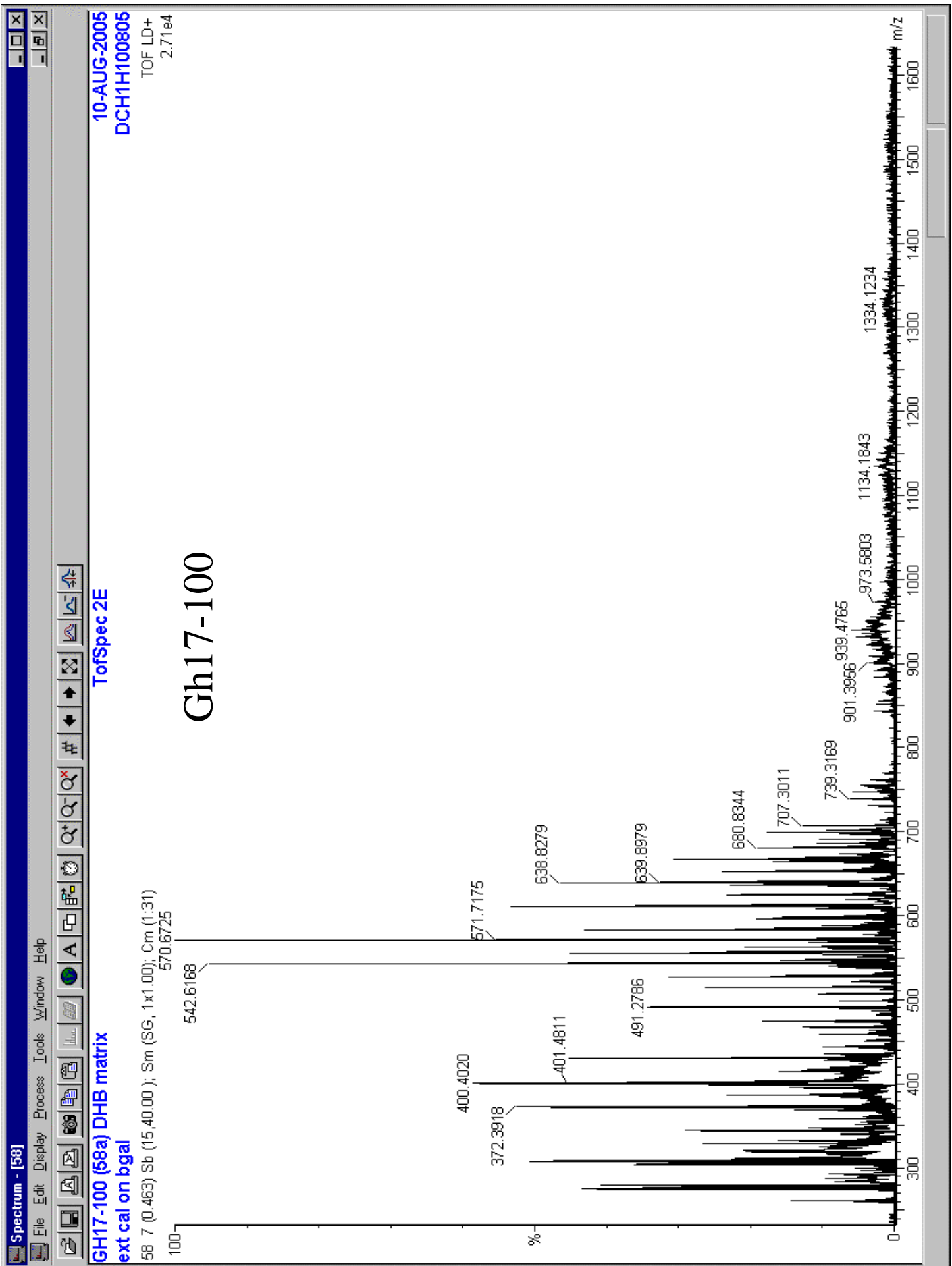
8-AUG-2005
DCH1H080805
TOF LD+
2.51e3

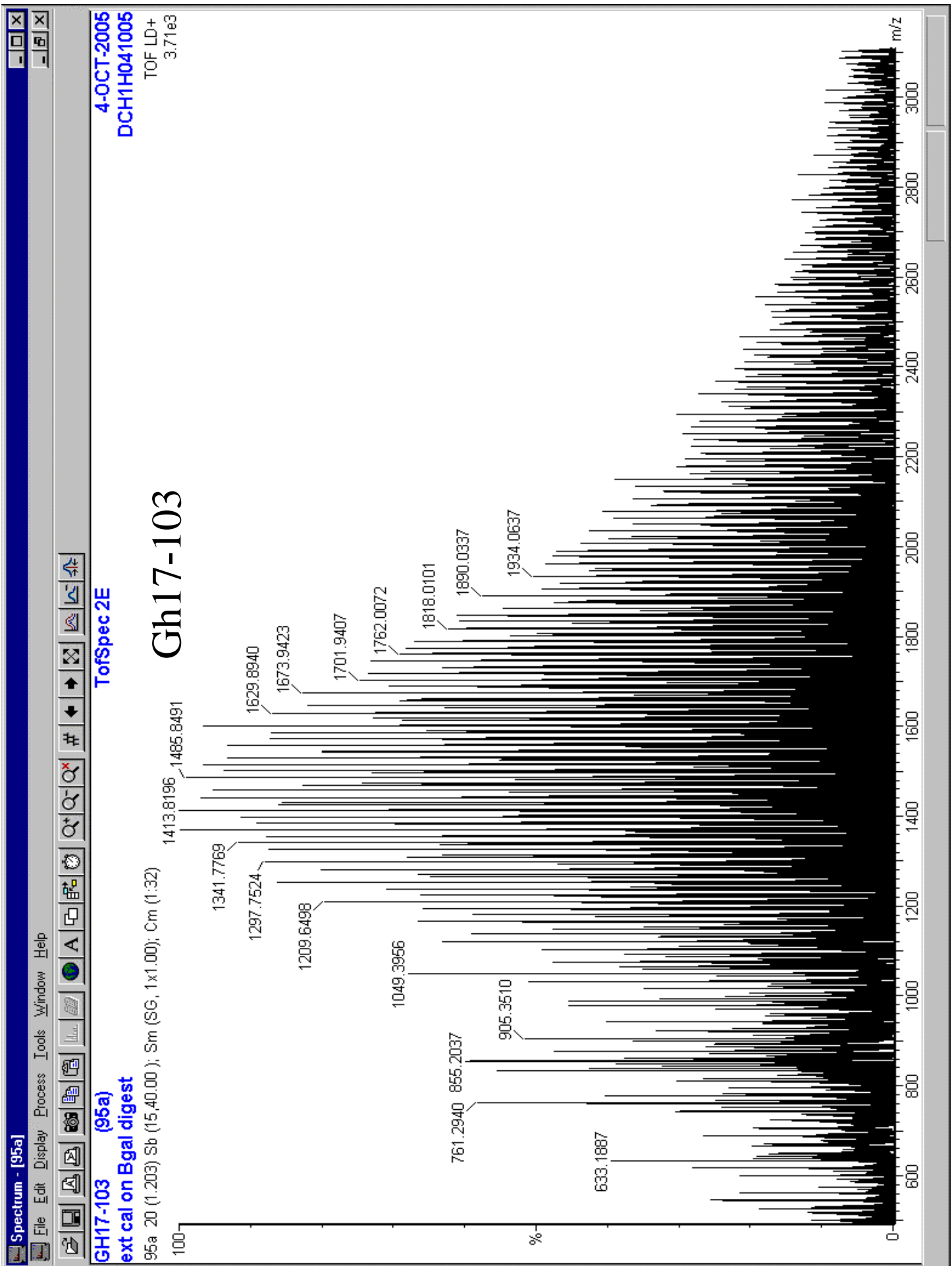
ToFSpec 2E

Gh17-98

GH17-98 (44a)
ext cal on bgal
44a 4 (0.262) Sb (15.40.00); Sm (SG, 1x1.00); Cm (1:8)
855.0395





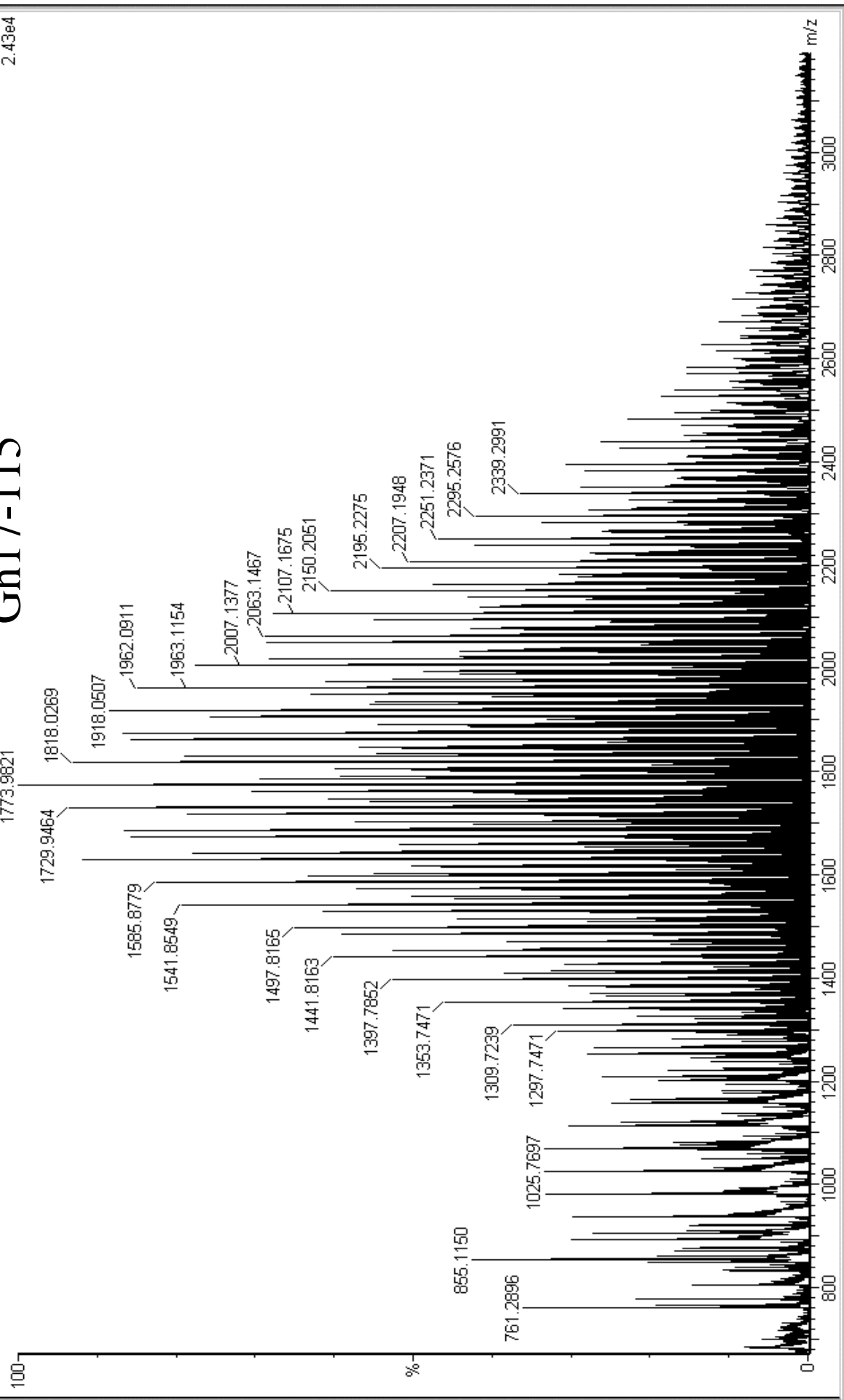


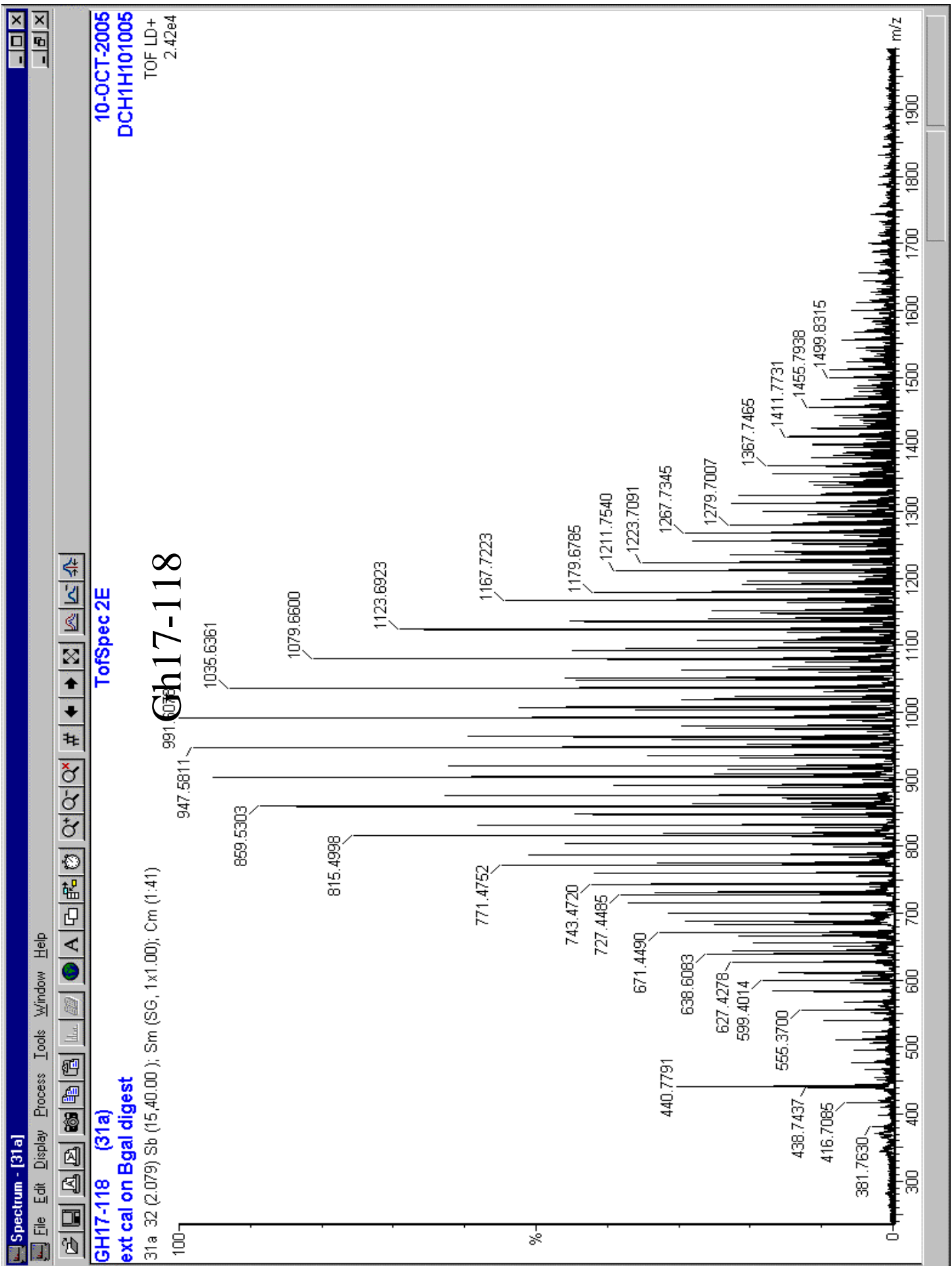
4-OCT-2005
DCH1H041005
TOF LD+
2.43e4

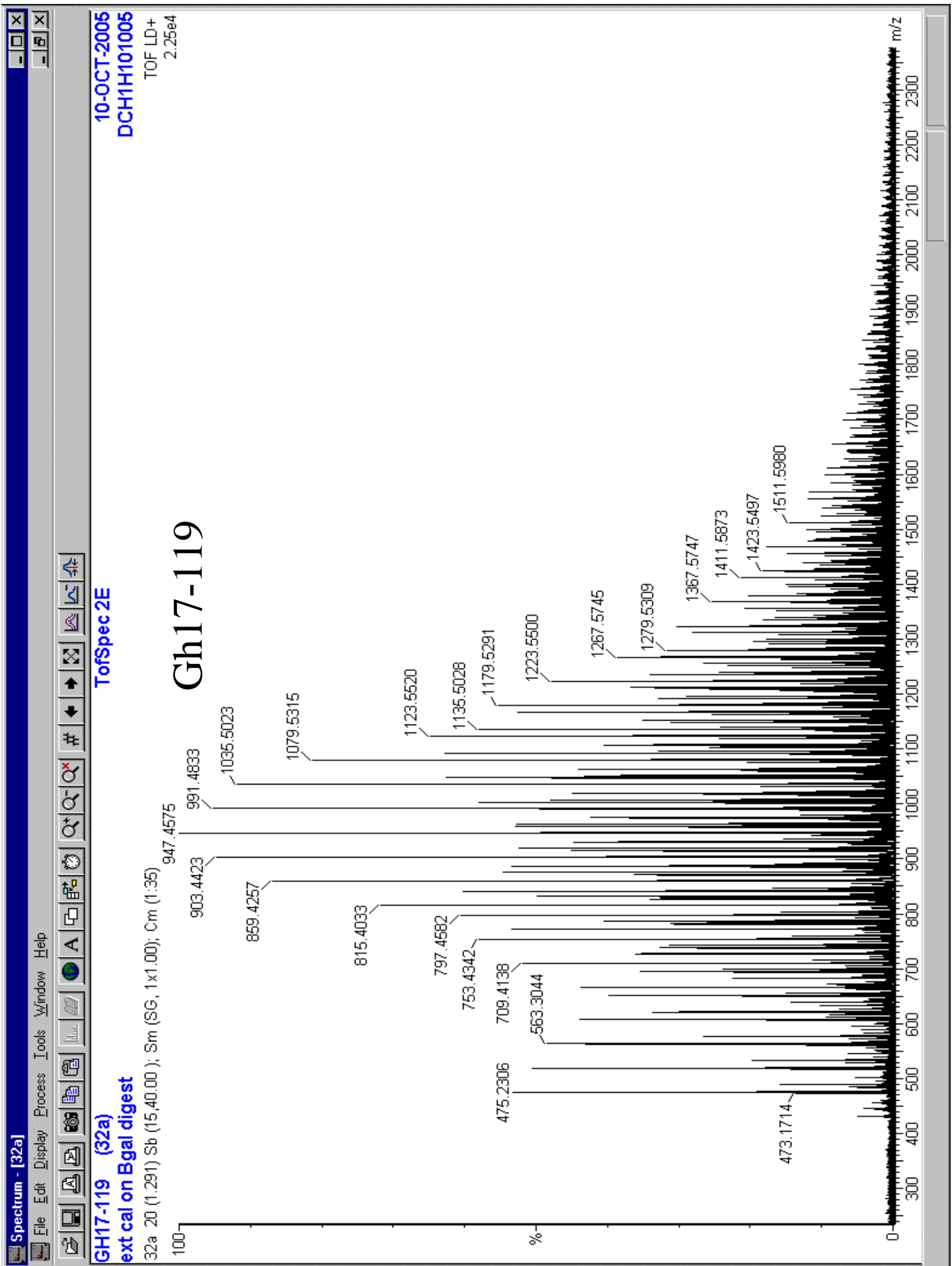
Gh17-115

ToSpec 2E

GH17-115 (94a)
ext cal on Bgal digest
94a 23 (2.506) Sb (15.40.00); Sm (SG, 1x1.00); Cm (1:131)







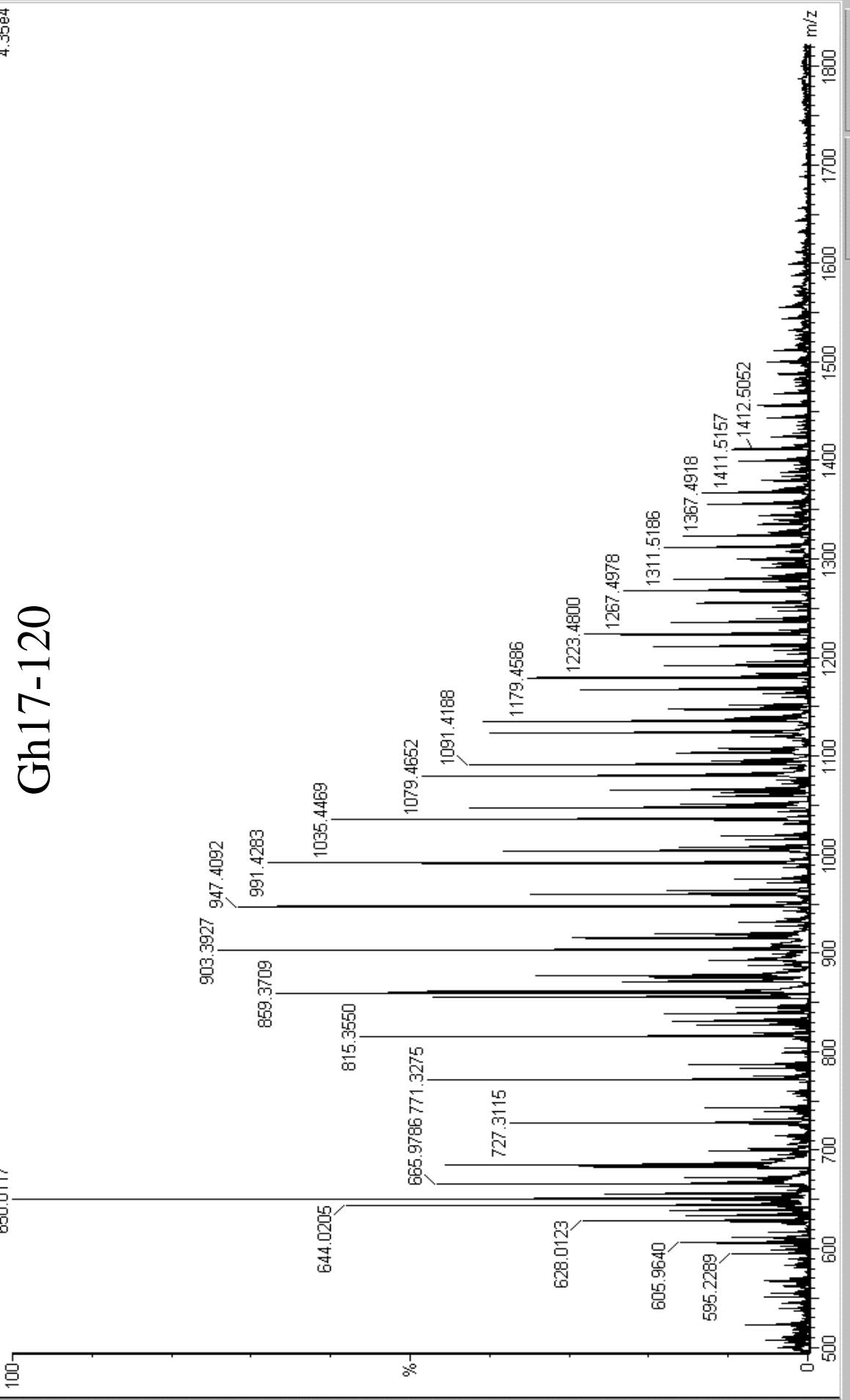
10-OCT-2005
 DCH1H1010005
 TOF LD+
 4.35e4

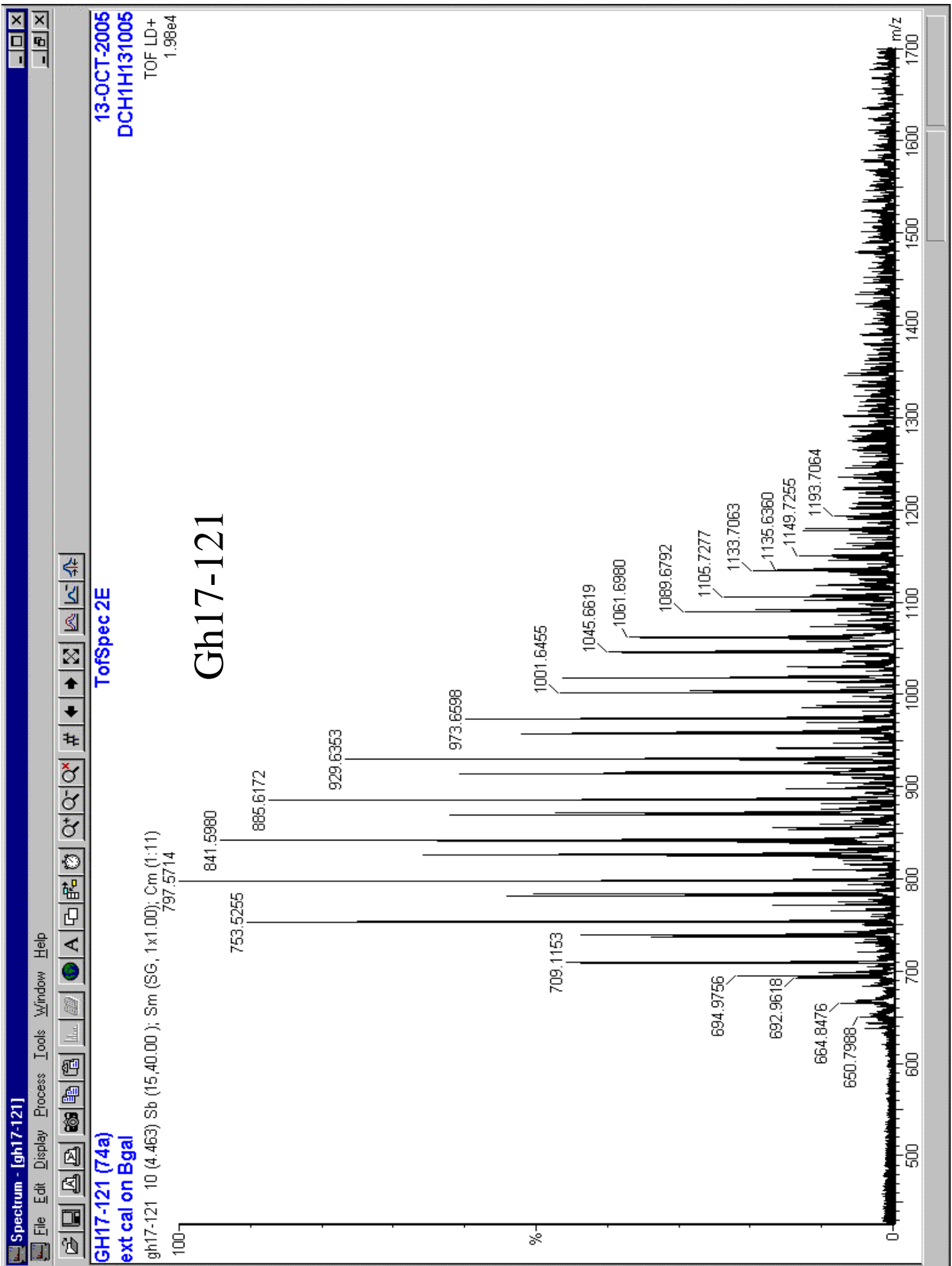
TofSpec 2E

Gh17-120

GH17-120 (33a)
 ext cal on Bgal digest

33a 6 (0.389) Sb (15.40.00); Sm (SG, 1x1.00); Cm (1:36)
 650.0117



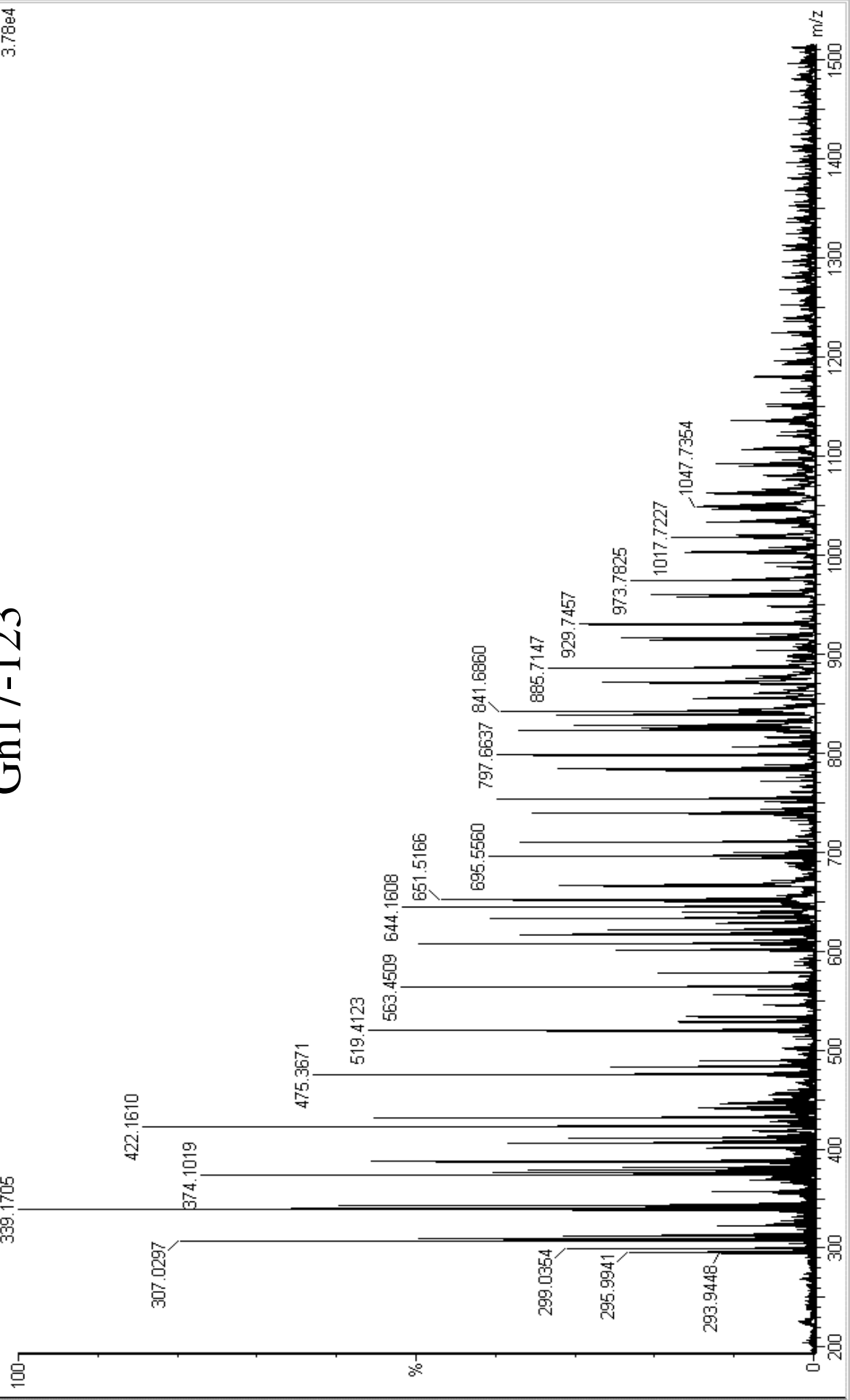


17-OCT-2005
DCH1H171005
TOF LD+
3.78e4

TofSpec 2E

Gh17-123

GH17-123 (47a)
ext cal on Bgal
47a 5 (2.106) Sb (15.40.00); Sm (SG, 1x1.00); Cm (1:9)
339.1705



Gavin Hill gh17-126
ext cal on Bgal

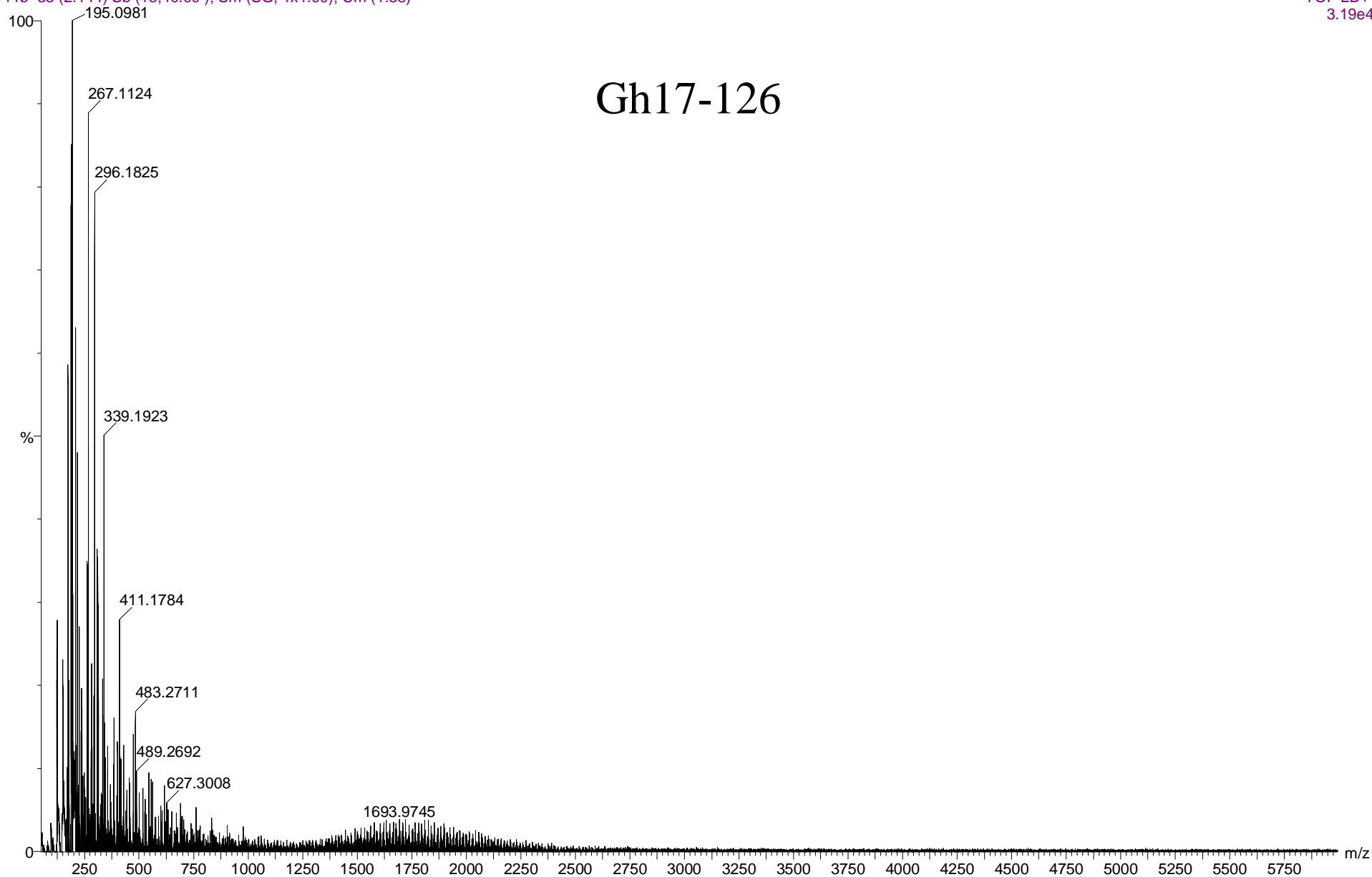
TofSpec 2E

26-OCT-2005
DCH 1S 261005

11b 33 (2.144) Sb (15,40.00); Sm (SG, 1x1.00); Cm (1:38)

TOF LD+
3.19e4

Gh17-126



Gavin Hill gh17-127
ext cal on Bgal

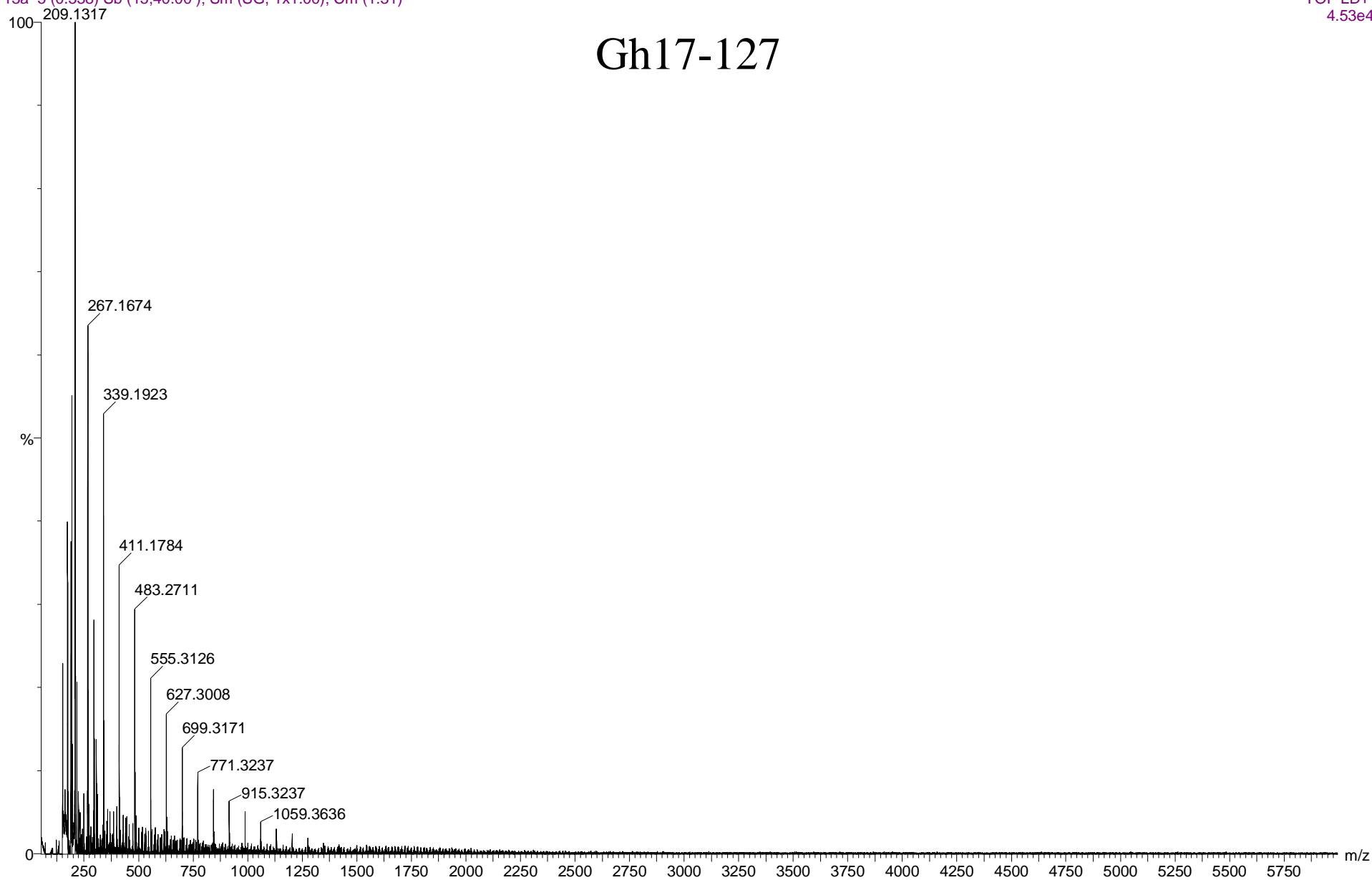
TofSpec 2E

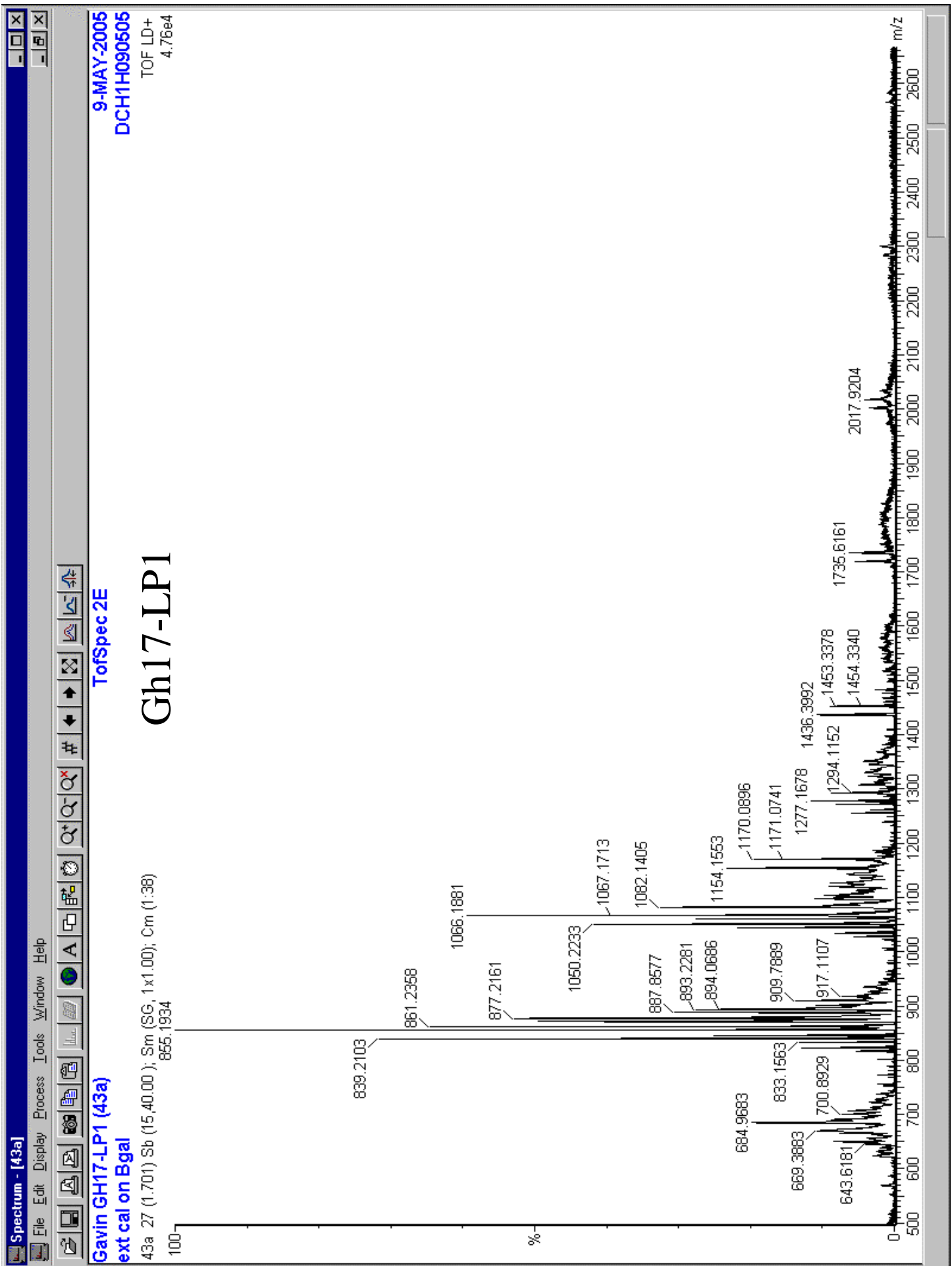
26-OCT-2005
DCH 1S 261005

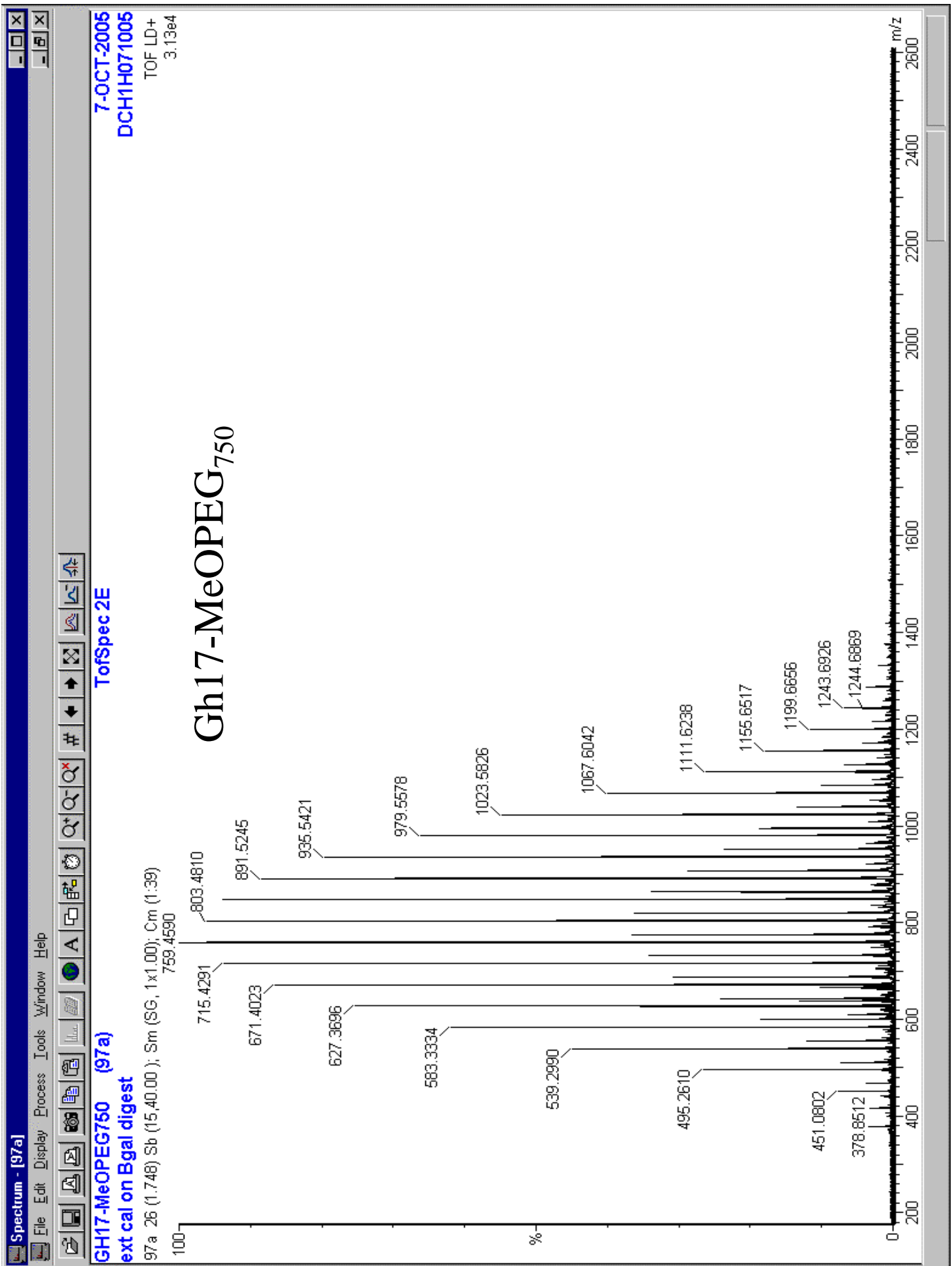
13a 5 (0.338) Sb (15,40.00); Sm (SG, 1x1.00); Cm (1:31)

TOF LD+
4.53e4

Gh17-127







Gavin Hill gh17-PEG500i n CHCl3
ext cal on Bgal

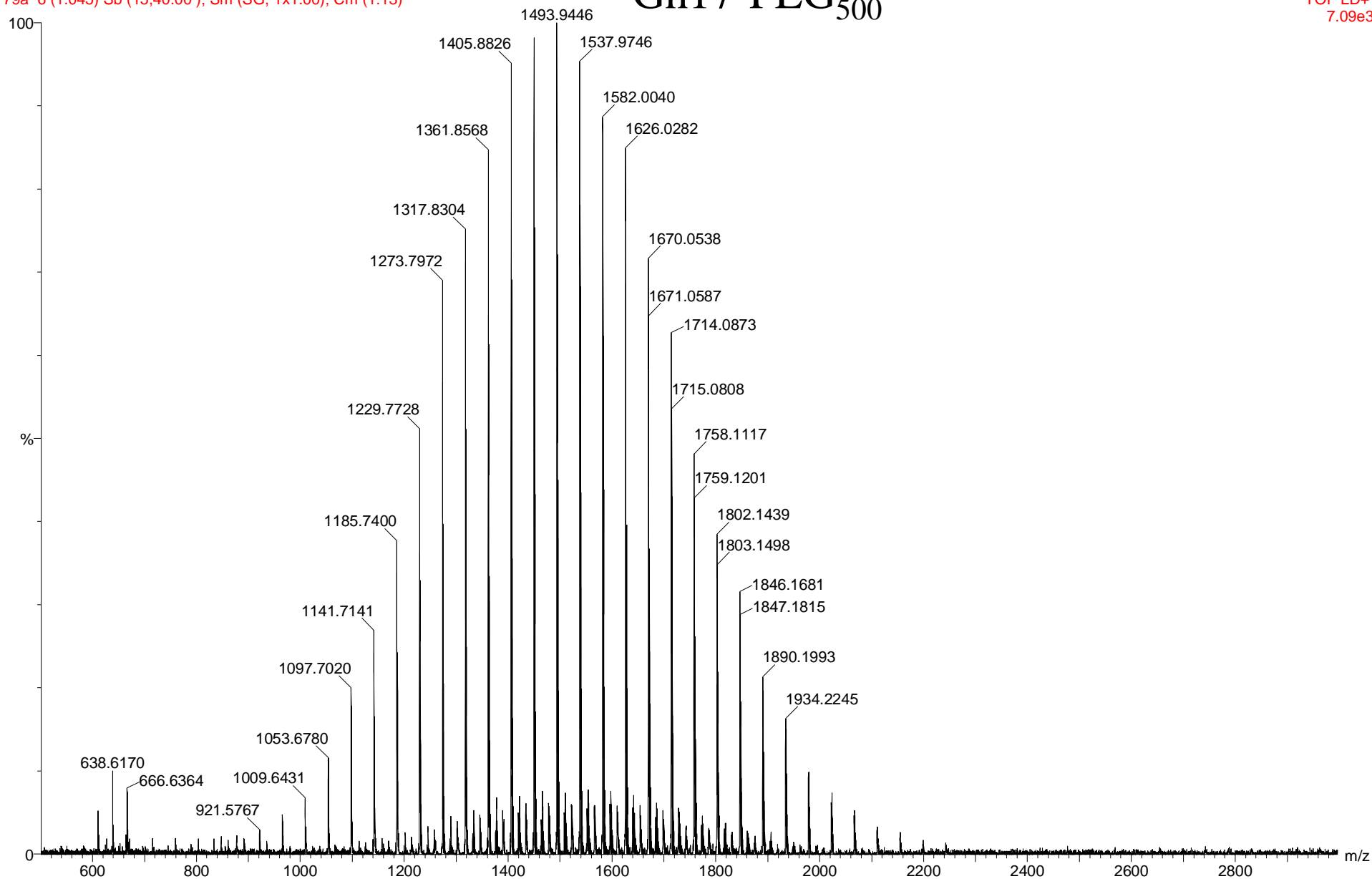
79a 6 (1.045) Sb (15,40.00); Sm (SG, 1x1.00); Cm (1:13)

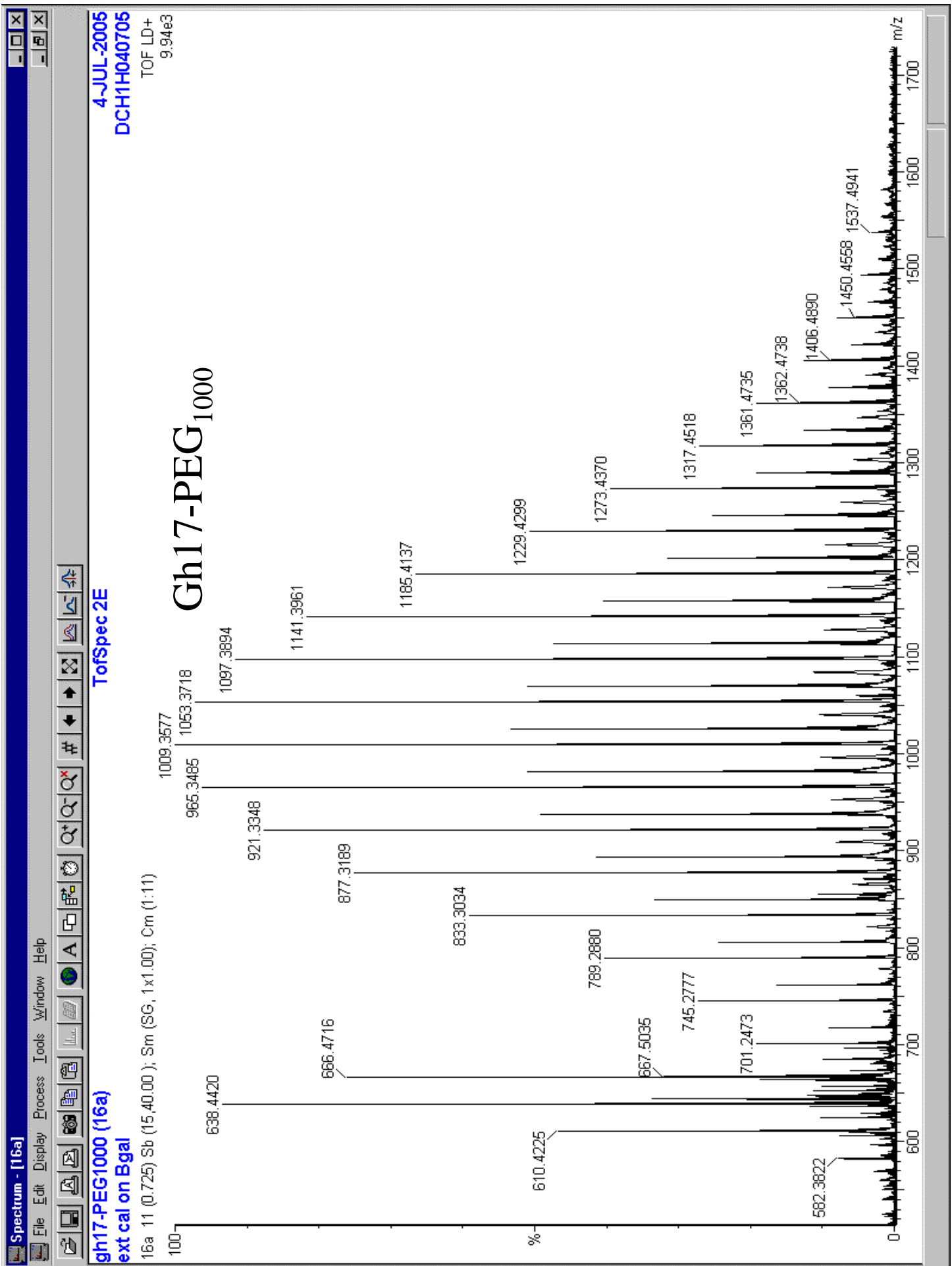
TofSpec 2E

Gh17-PEG₅₀₀

25-OCT-2005
DCH 1S 251005

TOF LD+
7.09e3





Gh17-PHSA

22-NOV-2005
DCH1B221105
TOF LD+
1.03e4

ToFSpec 2E

gh17-PHSA1
ext cal on Bgal

81a 12 (0.764) Sb (15.40.00); Sm (SG, 1x1.00); Cm (12.24)
847.4759

