
















Fuelling the nuclear ring of NGC 1097

Mattia C. Sormani ¹★ Ashley T. Barnes ^{2,3} Jiayi Sun ^{4,5} Sophia K. Stuber ⁶ Eva Schinnerer,⁶ Eric Emsellem,^{2,7} Adam K. Leroy,^{8,9} Simon C. O. Glover ¹ Jonathan D. Henshaw ^{6,10} Sharon E. Meidt,¹¹ Justus Neumann ⁶ Miguel Querejeta,¹² Thomas G. Williams ^{6,13} Frank Bigiel,³ Cosima Eibensteiner,³ Francesca Fragkoudi,¹⁴ Rebecca C. Levy ¹⁵† Kathryn Grasha ^{16,17}‡ Ralf S. Klessen ^{1,18} J. M. Diederik Kruijssen ^{19,20} Nadine Neumayer,⁶ Francesca Pinna,⁶ Erik W. Rosolowsky ²¹ Rowan J. Smith ²² Yu-Hsuan Teng ²³ Robin G. Tress²⁴ and Elizabeth J. Watkins²⁵

Affiliations are listed at the end of the paper

Accepted 2023 May 19. Received 2023 May 12; in original form 2023 February 17

ABSTRACT

Galactic bars can drive cold gas inflows towards the centres of galaxies. The gas transport happens primarily through the so-called bar dust lanes, which connect the galactic disc at kpc scales to the nuclear rings at hundreds of pc scales much like two gigantic galactic rivers. Once in the ring, the gas can fuel star formation activity, galactic outflows, and central supermassive black holes. Measuring the mass inflow rates is therefore important to understanding the mass/energy budget and evolution of galactic nuclei. In this work, we use CO datacubes from the PHANGS-ALMA survey and a simple geometrical method to measure the bar-driven mass inflow rate on to the nuclear ring of the barred galaxy NGC 1097. The method assumes that the gas velocity in the bar lanes is parallel to the lanes in the frame co-rotating with the bar, and allows one to derive the inflow rates from sufficiently sensitive and resolved position–position–velocity diagrams if the bar pattern speed and galaxy orientations are known. We find an inflow rate of $\dot{M} = (3.0 \pm 2.1) M_{\odot} \text{ yr}^{-1}$ averaged over a time span of 40 Myr, which varies by a factor of a few over time-scales of ~ 10 Myr. Most of the inflow appears to be consumed by star formation in the ring, which is currently occurring at a star formation rate (SFR) of $\simeq 1.8\text{--}2 M_{\odot} \text{ yr}^{-1}$, suggesting that the inflow is causally controlling the SFR in the ring as a function of time.

Key words: galaxies: bar – galaxies: individual: NGC 1097 – galaxies: ISM – galaxies: kinematics and dynamics – galaxies: nuclei.

1 INTRODUCTION

It is well known that galactic bars can efficiently transport cold gas from galactocentric radii of the order of $R =$ several kpc down to $R =$ few hundred pc (e.g. Sellwood & Wilkinson 1993; Kormendy & Kennicutt 2004; García-Burillo et al. 2005, 2009; Holmes et al. 2015). These inflows fuel star formation in nuclear rings (Mazzuca et al. 2008; Comerón et al. 2010), galactic outflows (Veilleux et al. 2020; Ponti et al. 2021), and central supermassive black holes (e.g. Padovani et al. 2017; Combes 2021). Measuring the inflow rates is therefore important to understand what regulates star formation in galactic centres (Kruijssen et al. 2014; Armillotta et al. 2019; Sormani et al. 2020; Moon et al. 2021, 2022; Henshaw et al. 2022), the formation of nuclear stellar discs (Gadotti et al. 2019; Bittner et al. 2020; Nogueras-Lara et al. 2020; Sormani et al. 2022; de Sá-Freitas et al. 2023), and the feeding of active galactic nuclei (Davies et al. 2007; Storchi-Bergmann & Schnorr-Müller 2019).

The transport of gas towards the centre occurs primarily through the two so-called bar dust lanes, one on each side of the bar, which connect the galactic disc at kpc scales to the nuclear rings at few hundred pc scales (see for example Fig. 1).¹ This has been confirmed by many hydrodynamical simulations of gas flowing in barred potentials (e.g. Athanassoula 1992; Englmaier & Gerhard 1997; Fux 1999; Kim et al. 2012; Sormani, Binney & Magorrian 2015; Fragkoudi, Athanassoula & Bosma 2016; Armillotta et al. 2019; Seo et al. 2019; Tress et al. 2020). In particular, these simulations have shown that the velocity vector of the gas in the bar lanes is almost parallel to the lanes in the frame co-rotating with the bar [see for example fig. 3 of Athanassoula (1992) or fig. 8 of Sormani et al. (2018)]. The bar lanes therefore act as two gigantic ‘galactic rivers’ along which the gas plunges almost radially from the galactic disc at $R =$ several kpc down to the nuclear region at $R =$ few hundred pc. This behaviour can also be clearly seen for example in the movies²

* E-mail: mattiacarlo.sormani@gmail.com

† NSF Astronomy and Astrophysics Postdoctoral Fellow.

‡ ARC DECRA Fellow.

¹The bar dust lanes are sometimes called ‘bar shocks’ because, from a hydrodynamical point of view, they are large-scale shocks in the interstellar medium. For intuitive explanations of why these shocks form, see for example Prendergast (1983) and Sellwood & Wilkinson (1993).

²<https://www.youtube.com/watch?v=j62sfCTztPg>

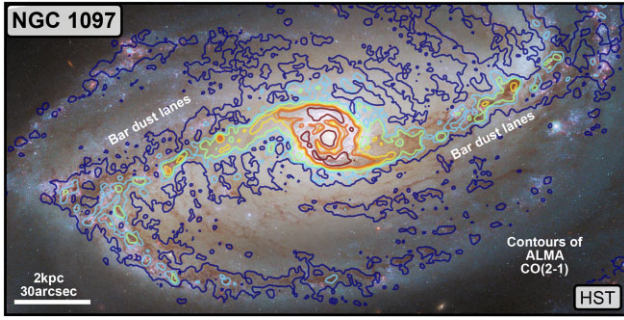


Figure 1. Position of bar dust lanes in the nearby, barred spiral galaxy NGC 1097. We show in the background a (WFC3) *HST* image composed of the following filters from projects PID 13413 and 15654 (processed as part of PHANGS-*HST*; see Lee et al. 2022): F275W nm (UV) and F336W (u) broad-band in violet, F438W (B) broad-band in dark blue, F547M (Strömgren *y*) medium band in cyan, F555W broad-band (V) in green, F814W broad-band (I) in yellow, and F657N ($H\alpha + [N II]$) in red. Overlaid as coloured contours is the CO(2–1) integrated intensity from the PHANGS-ALMA survey (Leroy et al. 2021b), in levels of 2, 10, 20, 50, 75, 100, and 250 $K km s^{-1}$ (increasing from blue to red). Note that the galaxy is rotated in the plane of the sky such that the direction of the kinematic position angle points towards the negative *x* axis (see Fig. 2).

of the simulation from Tress et al. (2020), where one can follow by eye CO clouds falling along the bar lanes towards the nuclear ring (see link in the footnote). These movies also show that once the CO clouds reach the vicinity of the nuclear ring they are not always accreted immediately on to it: sometimes they do, but sometimes they ‘overshoot’, eventually landing on the bar lane on the opposite side, joining its flow to be accreted at a later stage. Observational evidence of this overshooting process was recently obtained by *JWST* for the barred galaxy NGC 1365 (Whitmore et al. 2023). Hatchfield et al. (2021) further studied the inflow process using Monte Carlo tracer particles to more precisely keep track of the gas flows in a simulation, and quantified the fraction of overshooting gas using an accretion efficiency factor that, for the particular gravitational potential they used, they estimated to be $\epsilon = 30$ per cent ± 12 per cent when averaged over sufficiently long ($\gtrsim 30$ Myr) time-scales.

The picture of the inflow process described above suggests that the inflow rates can be estimated directly from observations if we can measure the mass density and flow velocity of cold gas along the bar lanes. Indeed, based on such considerations, Regan, Vogel & Teuben (1997) developed a simple geometrical method to estimate the mass inflow rate in the barred galaxy NGC 1530. However, the bar lane width was only marginally resolved in their observations, and they used $H\alpha$ velocities, which trace ionized gas, as a proxy for cold gas velocities since they could not detect CO in the bar lanes due to low sensitivity. Sormani & Barnes (2019) adapted the method to derive the bar-driven mass inflow rate in the Milky Way from CO position–position–velocity (PPV) datacubes taking into account the different geometry due to our view through the Galactic plane.

The PHANGS-ALMA survey (Leroy et al. 2021b) opens up new possibilities to derive inflow rates in barred galaxies. This survey has mapped CO¹² $J = 2 \rightarrow 1$ line emission in 90 nearby (distance < 20 Mpc) massive star-forming galaxies, the majority of which are barred (Sun et al. 2020; Querejeta et al. 2021). The ALMA CO data has high spatial resolution of 50–150 pc at the distance of the targets and high sensitivity with 1σ noise levels of 0.2–0.3 K per 2.5 $km s^{-1}$ channel. It is therefore an ideal data set to trace the cold gas velocity and mass density in the bar lanes and to measure the mass inflow rates.

In this paper, we build upon the methods of Regan et al. (1997) and Sormani & Barnes (2019) and derive the bar-driven mass inflow rate in the barred galaxy NGC 1097 using PHANGS-ALMA CO data. NGC 1097 (e.g. Hummel, van der Hulst & Keel 1987; Barth et al. 1995) is a strongly barred galaxy that hosts an intensely star-forming nuclear ring [star formation rate (SFR) $\simeq 1.8\text{--}2 M_{\odot} yr^{-1}$; Sandstrom et al. 2010; Hsieh et al. 2011; Prieto et al. 2019; Lopez-Rodriguez et al. 2021; Song et al. 2021] with a radius of ~ 700 pc. NGC 1097 is an ideal candidate to determine the inflow rate thanks to its proximity, which means high resolution (spatial resolution of ~ 110 pc, see Section 2), and for having clearly defined gas-rich bar lanes.

2 DATA

We use ¹²CO $J = 2\text{--}1$ data from the PHANGS-ALMA survey [version 4.0; see Leroy et al. (2021b) for survey details, and Leroy et al. (2021a) for in-depth discussion of the data reduction, imaging, and pipeline]. The PPV datacube has a velocity resolution of 2.5 $km s^{-1}$ and an angular resolution of 1.7 arcsec, which at the distance of NGC 1097, 13.58 ± 2.04 Mpc (Anand et al. 2021), corresponds to a linear spatial resolution of ~ 110 pc. We assume that NGC 1097 has a position angle of 122.4° and an inclination of 48.6° (Lang et al. 2020). We take $\Omega_p = -21.6 km s^{-1} kpc^{-1}$ as our fiducial value of the bar pattern speed (Lin et al. 2013). This value is obtained by matching hydrodynamical simulations to the observed morphology of NGC 1097. The negative sign is according to the conventions used in this paper (see Section 3.2). The properties of NGC 1097 are summarized in Table 1.

3 METHODOLOGY

In this section, we describe our methodology to derive the inflow rates. As mentioned in Section 1, this method builds upon the works of Regan et al. (1997) and Sormani & Barnes (2019). The key assumption in all these works (and in this work) is the same: that the gas velocity vector in the bar lanes is parallel to the lane, and therefore that the bar lanes act as ‘galactic rivers’ in which the gas flows. As we shall see below, under this assumption it is possible to derive the *total* gas velocity in the lanes if the galaxy orientation and bar pattern speed are known. The methodology then allows one to calculate the inflow rate if the gas mass density along the bar lanes is also known. As we discuss more in detail below, the largest uncertainty in our derived mass inflow rate comes from the CO-to-H₂ mass conversion factor.

This section is structured as follows. In Section 3.1, we describe how we identify the bar lanes in the PHANGS-ALMA CO datacube. In Section 3.2, we show how to calculate the total gas velocity along the lanes given the line-of-sight component only. In Section 3.3, we explain how we derive the mass density along the lanes and calculate the inflow rates.

3.1 Bar lanes identification

The first step is visual identification of the bar lanes from the PHANGS-ALMA CO datacube, which are clearly visible in NGC 1097 (Fig. 1). The bar lanes are then cut out manually in 3D in PPV space using the GLUE³ environment, which was chosen for its efficient 3D volume rendering of the emission in PPV space and

³<https://glueviz.org/>

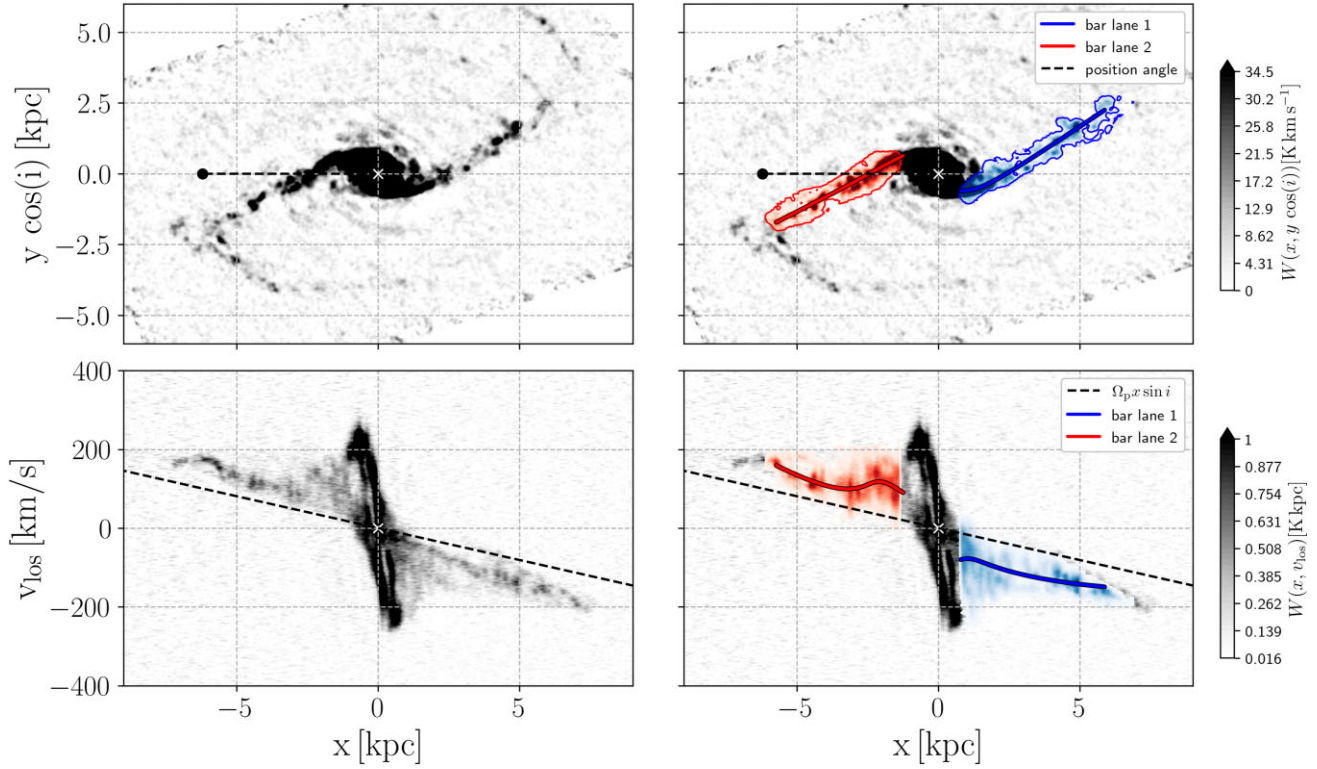


Figure 2. Position–position (top) and position–velocity (bottom) projection of the CO $J = 2-1$ datacube of NGC 1097. The galaxy is rotated in the plane of the sky such that the direction of the kinematic position angle points towards the negative x axis (see black dashed line in the top panels). Red and blue contours indicate the emission in the datacube associated with the bar lanes. The red and blue lines indicate the spline fits to the bar lanes. The black dashed line in the bottom-right panel indicates the quantity $v_{\text{los}} = \Omega_p x \sin i$, which appears in the deprojection of the velocity parallel to the bar lanes (see equation 5).

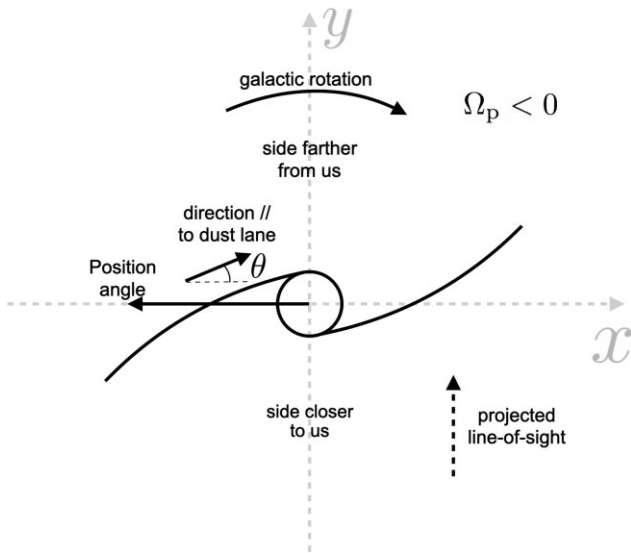


Figure 3. Sketch illustrating the geometry for the bar lane deprojection (see Section 3.2). The z axis points out of the page, and it is inclined by an angle i with respect to the line of sight.

functionality in separating subsets of a data set. This is done with the following three steps: (i) we plot the datacube as a PPV volume rendering; (ii) we select a data subset by masking in position–position space by tracing a direct path in PPV from the galaxy centre to the bar end; and (iii) we then define a further subset of the position–position space subset by applying an additional mask to the emission that

Table 1. Properties of NGC 1097.

Property	Value	Reference
Position angle	122.4°	Lang et al. (2020)
Inclination	48.6°	Lang et al. (2020)
Distance	13.58 ± 2.04 Mpc	Anand et al. (2021)
Ω_p (bar pattern speed)	$-21.6 \text{ km s}^{-1} \text{ kpc}^{-1}$	Lin et al. (2013)
\dot{M} (mass inflow rate)	$3.0 \pm 2.1 M_\odot \text{ yr}^{-1}$	This work
SFR in the nuclear ring	$1.8-2 M_\odot \text{ yr}^{-1}$	See Section 5.2

includes the velocity space information. In this mask, we select the emission associated with the bar lanes, which can be clearly seen with a strong velocity gradient towards 0 km s^{-1} , and remove any line-of-sight contamination that is clearly distinguishable in velocity space (Figs 1 and 2). Lastly, we omitted the remaining emission within the mask below $\sim 1\sigma$ of the noise – i.e. excluding the insignificant emission. Overall, the procedure is relatively straightforward in the case of NGC 1097, since there is not much confusion between the bar lanes and unassociated emission in the disc due to the near-face-on orientation, and the strong, bright, and relatively isolated bar. Fig. 2 shows the result for the two bar lanes (shown in red and blue) in position–position and position–velocity spaces.

Once the bar lanes have been identified, we fit a spline through them using the function SPLPREP contained in the SCIPY.INTERPOLATE PYTHON package.⁴ The fitting is done in 3D in the

⁴<https://docs.scipy.org/doc/scipy/reference/generated/scipy.interpolate.splprep.html>

PPV datacube, and each cube point is weighted by the CO brightness of the cube pixel. Note that this essentially relies on treating PPV as a PPP space (i.e. treating velocity coordinate on the same footing as the spatial coordinate), so the procedure is in principle sensitive to the velocity resolution relative to spatial resolution. In practice, it works well because for our spatial and velocity resolutions the number of resolution elements spanned in the velocity direction in a bar lane ($150 \text{ km s}^{-1}/2.5 \text{ km s}^{-1} \simeq 60$) is roughly comparable to the number of points spanned in the spatial directions ($5 \text{ kpc}/110 \text{ pc} \simeq 45$). The result of the spline fitting is shown in the right-hand panels in Fig. 2 as blue and red curves. In this way, we obtain a spline defined by $N = 41$ points, each of them with an associated position and a line-of-sight velocity.

3.2 Bar lane deprojection

Consider a galactocentric Cartesian frame (x, y, z) such that the $z = 0$ plane coincides with the mid-plane of the galaxy (see Fig. 3). The galaxy rotates around the z axis. We use the convention that the rotation angular velocity is positive if the galaxy rotates anticlockwise, and negative if the galaxy rotates clockwise. NGC 1097 is rotating clockwise⁵ and so the sign of rotation is negative (see sketch in Fig. 3).

We orient the (x, y, z) frame so that when the galaxy is projected on to the plane of the sky, the direction defined by the galaxy kinematic position angle⁶ points towards the negative x direction (see Figs 2 and 3). These conventions have the following implications: (i) the line of nodes coincides with the x axis; (ii) for matter in purely circular motion, the side of the galaxy at $x < 0$ has positive line-of-sight velocity (it is moving away from us), and the side at $x > 0$ has negative line-of-sight velocity (it is moving towards us); (iii) deprojecting the galaxy consists in a rotation around the x axis of an angle $0 \leq i \leq 90^\circ$ (the inclination angle). Therefore, the x axis remains the same in the projected and deprojected views, while the y axis is stretched by a factor $\cos(i)$. This assumes that all matter in the image is located in the $z = 0$ plane; and (iv) the side of the galaxy at $y < 0$ is nearer to (farther from) us if the galaxy rotates clockwise (counterclockwise).

The unit vector in the direction of the line of sight can be written as $\hat{n} = -\hat{z} \cos(i) - \hat{y} \sin(i)\eta$, where $\eta = -1$ if the galaxy rotates clockwise and $\eta = +1$ if the galaxy rotates anticlockwise.⁷ Let $\mathbf{v}(x, y) = v_x \hat{x} + v_y \hat{y}$ be the velocity in the inertial frame and $\mathbf{v}_{\text{bar}}(x, y) = v_{\text{bar},x} \hat{x} + v_{\text{bar},y} \hat{y}$ the velocity in the frame rotating at the pattern speed of the bar (we ignore vertical motions). The two are related by

$$\mathbf{v} = \mathbf{v}_{\text{bar}} + \Omega_p (\hat{z} \times \mathbf{r}), \quad (1)$$

where

$$\Omega_p (\hat{z} \times \mathbf{r}) = \Omega_p [x \hat{y} - y \hat{x}], \quad (2)$$

and Ω_p is the bar pattern speed, which can take both signs depending on the direction of rotation. The line-of-sight velocity is then

$$v_{\text{los}} = \mathbf{v} \cdot \hat{n} = -v_{\text{bar},y} \sin(i)\eta - \Omega_p x \sin(i)\eta. \quad (3)$$

⁵The direction of rotation is derived assuming that bar lanes are on the leading side of the bar, as it is virtually always the case.

⁶The (kinematic) position angle of a galaxy is defined as the direction of the ‘redshifted’ side of the galaxy, measured relative to the north celestial pole, turning positive towards East. With the convention used in the figures in this paper, the position angle turns positive counterclockwise.

⁷In practice, η is the sign of the bar pattern speed.

Using the assumption discussed above that in the rotating frame the gas velocity is parallel to the bar lane, we can write $\mathbf{v}_{\text{bar}} = v_{\parallel} \hat{s}$, where $\hat{s} = \hat{x} \cos \theta + \hat{y} \sin \theta$ is the direction parallel to the bar lane and θ is the angle between the bar lanes and the x axis (see Fig. 3). We take v_{\parallel} to be positive if the gas moves towards the central ring. Using this, equation (3) can be rewritten as

$$v_{\text{los}} = -v_{\parallel} \sin(\theta) \sin(i)\eta - \Omega_p x \sin(i)\eta, \quad (4)$$

and rearranging we obtain

$$v_{\parallel} = -\frac{v_{\text{los}} + \Omega_p x \sin(i)\eta}{\sin(i) \sin(\theta)\eta}. \quad (5)$$

This equation gives the total gas velocity along the bar lane as a function of observable quantities. The angle θ is measured from the deprojected spline. v_{los} is the line-of-sight velocity along the spline. Ω_p is the pattern speed of the bar. When $v_{\parallel} = 0$, in our model the gas is not moving at all in the frame of the bar, and from equation (5) we indeed recover the v_{los} that corresponds to rigid body rotation at angular velocity Ω_p .

3.3 Calculation of the inflow rate

At this stage, we have the following quantities at each point j along the spline:

- (i) The deprojected coordinates (x_j, y_j)
- (ii) The velocity $v_{\parallel,j}$ (equation 5)

The spline has N points $j = \{0, \dots, N - 1\}$. The point $j = 0$ corresponds to the bar lane end closest to the nuclear ring, while $j = N - 1$ corresponds to the bar lane end farthest from the centre.

3.3.1 Time to accretion

Assuming steady state, the time it takes for a gas parcel to go from spline point j to point $j - 1$ is

$$dt_{\text{accr},j} = \frac{ds_j}{v_{\parallel,j}}, \quad (6)$$

where $ds_j = \sqrt{(x_{j-1} - x_j)^2 + (y_{j-1} - y_j)^2}$ is the distance between a spline point and the next one. The total time it takes for a gas parcel at point j to reach the nuclear ring is then

$$t_{\text{accr},j} = \sum_{k=1}^j dt_{\text{accr},k}. \quad (7)$$

3.3.2 Mass

We assign a total gas mass to each point along the spline as follows (see for example Rosolowsky et al. 2021). First, we calculate the total CO luminosity associated with point j on the spline as

$$dL_{\text{CO},j} = A_{\text{pix}} \Delta v \sum_k T_k, \quad (8)$$

where A_{pix} is the projected physical area of a cube pixel in pc^2 , Δv is the channel width in km s^{-1} , T_k is the brightness temperature of the cube pixel k measured in K, and the sum over k is extended over all pixels in the datacube that are closer to the spline point j than to any other spline point (and that are associated to the bar lane according to the manual identification). The resulting L_{CO} has units of $\text{K km s}^{-1} \text{pc}^2$.

To convert this CO line luminosity into molecular gas mass, we use a CO (2–1)-to-H₂ conversion factor, $\alpha_{\text{CO}}^{(2-1)}$, that varies spatially as a function of metallicity and total (gas plus stellar) mass surface density, following Bolatto, Wolfire & Leroy (2013). We favour this location-dependent conversion factor over the constant, ‘galactic’ value commonly assumed in the literature, as the former can better capture the expected decrease of $\alpha_{\text{CO}}^{(2-1)}$ in the centres of barred galaxies due to higher gas temperature and stronger velocity gradient (e.g. Sandstrom et al. 2013; Israel 2020; Teng et al. 2022).

We calculate $\alpha_{\text{CO}}^{(2-1)}$ at each spatial location by combining the $\alpha_{\text{CO}}^{(1-0)}$ prescription in Bolatto et al. (2013, equation 31⁸) with a fixed CO (2–1)/(1–0) ratio of $R_{21} = 0.65$ (den Brok et al. 2021; Yajima et al. 2021; Leroy et al. 2022). The metallicity at each location is determined from the reported radial metallicity gradient of NGC 1097 in Pilyugin, Grebel & Kniazev (2014). The (kpc-scale) stellar mass surface density is derived from archival *Spitzer* IRAC 3.6 μm images, assuming an infrared colour-dependent stellar mass-to-light ratio following Leroy et al. (2021b). Combining the location-dependent metallicity, stellar mass surface density, and kpc-scale CO (2–1) line intensity, we iteratively solve for $\alpha_{\text{CO}}^{(2-1)}$ until its value is consistent with equation (31) in Bolatto et al. (2013) given the sum of kpc-scale stellar and molecular gas mass surface densities, the latter of which depends on $\alpha_{\text{CO}}^{(2-1)}$ itself (also see appendix B in Sun et al. 2022).

We then convert the CO (2–1) line luminosity in each pixel into a molecular gas mass via

$$dM_j = \alpha_{\text{CO},j}^{(2-1)} L_{\text{CO},j}, \quad (9)$$

where $\alpha_{\text{CO},j}^{(2-1)}$ is the CO (2–1)-to-H₂ conversion factor at point j (see Fig. 4). This gives us a total mass associated with each of the N points along the spline.

3.3.3 Inflow rate

The final step is to calculate the inflow rate. This is given as

$$\dot{M}_j = \epsilon \frac{dM_j}{dt_{\text{accr},j}}, \quad (10)$$

where ϵ is an efficiency factor that takes into account that not all the gas falling along the bar lanes is accreted as soon as it reaches the nuclear ring. Indeed, as described in Section 1, once the gas reaches the nuclear ring it partially accretes on to it, and partially ‘overshoots’, to be accreted at a later stage.

Estimates of the efficiency factor ϵ are scarce in the literature. Regan et al. (1997) estimated the efficiency factor in NGC 1530 to be ~ 20 per cent using hydrodynamical simulations, but unfortunately this determination is inaccurate due to an inherited sign mistake in the treatment of the bar potential in the CMHOG code they used (Kim et al. 2012). Kim et al. (2011) found $\epsilon \sim 15$ per cent using smoothed particle hydrodynamic simulations that, by today’s standard, are relatively low resolution (500 M_{\odot} per particle). Hatchfield et al. (2021) used simulations with much higher resolution (25 M_{\odot} per cell) and estimated the efficiency factor using three different analysis methods (see their section 3). They found that all the methods agree with each other well within the uncertainties and, for the particular barred gravitational potential they used, yield an averaged efficiency factor of $\epsilon = (30 \pm 12)$ per cent. They also showed that

⁸Note that a fixed molecular cloud surface density of 100 $M_{\odot} \text{pc}^{-2}$ is adopted for this calculation to avoid unphysical conversion factor values (see discussions in Sun et al. 2023).

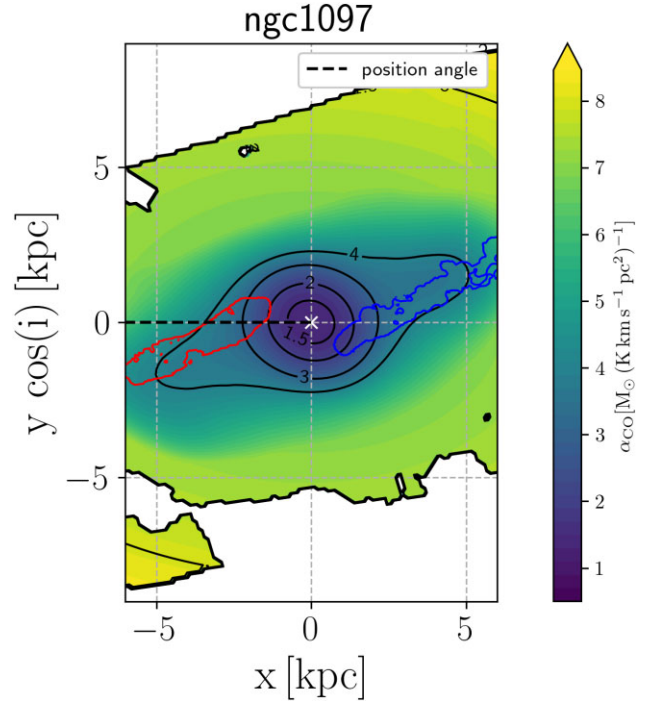


Figure 4. Map of the spatially dependent $\alpha_{\text{CO}}^{(2-1)}$ factor we used to convert from CO intensity to mass. The red and blue contours outline the two bar lanes. The $\alpha_{\text{CO}}^{(2-1)}$ varies by a factor of ~ 2 from one end to the other of each bar lane. The galaxy orientation in the plane of the sky is as in Figs 1 and 2.

this efficiency has large fluctuations on small (~ 1 Myr) time-scales that are averaged out over longer (~ 30 Myr) time-scales. In this paper, we adopt $\epsilon = (30 \pm 12)$ per cent as our fiducial value, and discuss in Section 5.1.2 potential limitations.

4 THE BAR-DRIVEN INFLOW RATE OF NGC 1097

The top panel in Fig. 5 shows v_{\parallel} for the bar lanes of NGC 1097 derived using equation (5) as a function of distance from the nuclear ring, while the bottom panel shows the time to accretion calculated using equation (7). The sharp increase in v_{\parallel} near the centre for bar lane 1 (blue) is an artefact due to the fact that the spline becomes almost perpendicular to the line of sight when entering the ring (see Fig. 2), causing the term $\sin \theta \rightarrow 0$ in equation (5) (see discussion in Section 5.3).

The inflow rate for NGC 1097 (equation 10), and the cumulative mass accreted over time, are shown in Fig. 6. The hatched area at $t < 10$ Myr indicates the region where we consider our inflow rate to be unreliable because the bar lanes are interacting with the nuclear ring, and the distinction between bar lanes and ring becomes blurred. As can be seen in the bottom panel of Fig. 7, this ‘unreliable’ region extends out to a distance of $d = 1.7\text{--}1.8$ kpc from the ring. The rapid increase in the inflow rate near $t = 0$ (within the unreliable region) for bar lane 1 (blue) in the top panel of Fig. 6 is a consequence of the spurious sharp increase in v_{\parallel} mentioned above. Hereafter, we consider only the region $t = 10\text{--}50$ Myr for analysis.

The inflow rates on each of the two bar lanes averaged over the time span $t = 10\text{--}50$ Myr are very similar, $\dot{M}_1 \simeq 1.51 M_{\odot} \text{yr}^{-1}$ and $\dot{M}_2 \simeq 1.53 M_{\odot} \text{yr}^{-1}$, respectively. They sum up to a total time-averaged inflow rate of $\dot{M} \simeq 3 M_{\odot} \text{yr}^{-1}$ (omitting insignificant digits). The rates are roughly constant as a function of time in the range $t =$

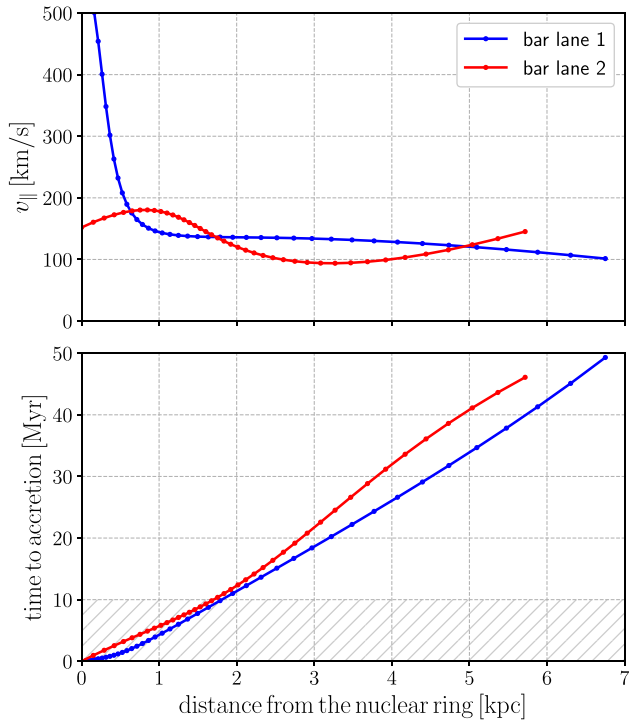


Figure 5. *Top:* total velocity along the bar lanes of NGC 1097 (equation 5), as a function of distance from the nuclear ring calculated in the curved path along the bar lane. The sharp increase in the blue curve near the centre in the top panel is likely an artefact due to the bar lane becoming almost parallel to the line of nodes (see Section 4). *Bottom:* time the gas will take to accrete on to the nuclear ring, calculated using equation (7). The hatched area shows where the inflow rate is not reliable due to interaction between the bar lanes and the nuclear ring (as in Fig. 6).

10–40 Myr, with fluctuations by a factor of a few over typical time-scales of $\Delta t \sim 10$ Myr (our temporal resolution is of the order of ~ 1 Myr). Peaks in the inflow rate generally correspond to denser CO clumps along the lanes visible in Fig. 2. The \dot{M} curves for each of the two lanes do not show any obvious overall upward or downward monotonic trend in the region $t = 10$ –50 Myr, as one would expect from a roughly steady-state flow. It is interesting to note that this occurs because the mass density along the lanes remains roughly constant as a result of two competing effects: the CO brightness increases as we move closer to the nuclear ring (Fig. 2), while the $\alpha_{\text{CO},j}^{(2-1)}$ decreases (Fig. 4), so that the product of the two is roughly constant (see equation 9).

5 DISCUSSION

5.1 Uncertainty in the inflow rate

5.1.1 Uncertainty from the CO-to-H₂ conversion factor

The largest uncertainty in our inflow rates comes from the α_{CO} mass conversion factor (equation 9 and Fig. 4). While we attempt to account for its spatial variation with the prescription suggested by Bolatto et al. (2013), there are uncertainties associated with our assumption on R_{21} as well as the prescription itself (see Section 3.3.2). Specifically, we adopt a fixed $R_{21} = 0.65$ to be consistent with the value assumed by Sandstrom et al. (2013), which was one of the key data sets against which the Bolatto et al. (2013) prescription was calibrated. However, R_{21} is known to increase

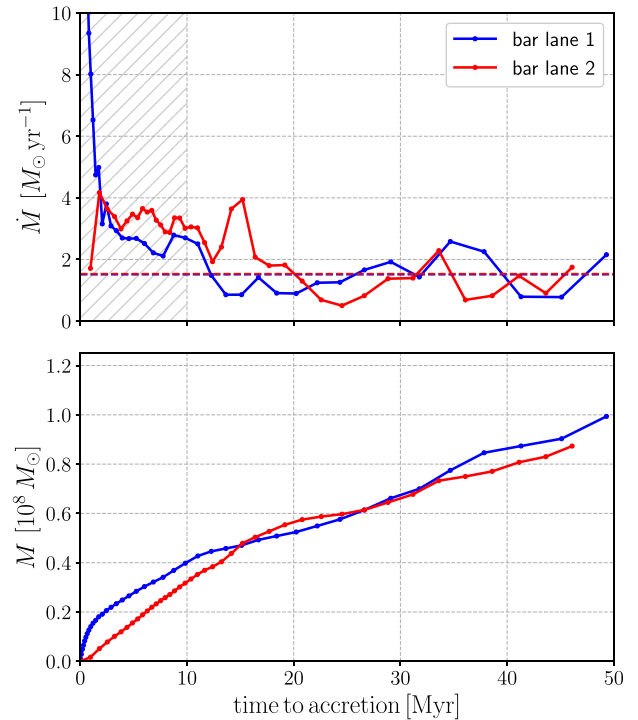


Figure 6. *Top:* the instantaneous mass inflow rate along the bar lanes of NGC 1097 calculated using equation (10). The blue and red dashed lines show the inflow rates averaged over the non-hatched region. *Bottom:* the cumulative mass accreted over time. The hatched area shows where the inflow rate is not reliable due to interaction between the bar lanes and the nuclear ring.

towards galaxy centres in reality, with values reaching up to 0.8–1.0 (Israel 2020; den Brok et al. 2021; Yajima et al. 2021; Leroy et al. 2022; Teng et al. 2022). While our adopted fixed R_{21} ensures methodological consistency with Bolatto et al. (2013), it might still introduce systematic uncertainties of up to 50 per cent.

A perhaps more important source of uncertainty comes from the Bolatto et al. (2013) prescription itself, which was calibrated against kpc-scale observations and thus should not be expected to account for small-scale effects such as variations in local gas conditions within and among individual molecular clouds. This is demonstrated by recent studies on barred galaxy centres (e.g. Teng et al. 2022, 2023), which reported significant variations in optical depth and temperature at ~ 100 pc scales, leading to 2–3 times lower α_{CO} than the kpc-scale prediction from Bolatto et al. (2013) in bar lanes. Therefore, using the kpc-scale stellar and gas mass surface densities consistent with Bolatto et al. (2013), we expect our α_{CO} calculation to only reflect kpc-scale variations and leave systematic uncertainties at a factor of 2–3 level when applied to ~ 100 pc scale CO data. Considering both sources of uncertainties discussed above, we expect the $\alpha_{\text{CO}}^{(2-1)}$ factor to be uncertain by at least a factor of 2, which translates into an uncertainty of $\delta \dot{M} = \pm 1.5 M_{\odot} \text{ yr}^{-1}$ on the inflow rate.

5.1.2 Uncertainty from the efficiency factor

To calculate the error associated with the efficiency factor, we use the recommended value of $\delta \epsilon = 12$ per cent from Hatchfield et al. (2021), which translates into an error on the inflow rate of $\delta \dot{M} = \pm 1.2 M_{\odot} \text{ yr}^{-1}$. This is a relatively generous uncertainty that takes into account potential variations in the morphology of the bar lanes,

different orbital initial conditions on the gas on them, and spatial variations of the efficiency factor along the bar lanes.

It is worth mentioning that the gravitational potential that Hatchfield et al. (2021) used to derive the efficiency factor is tuned to reproduce the properties of the Milky Way. While this can be considered a reasonably general strongly barred potential, it is possible that the efficiency factor depends on the characteristics of the bar potential (e.g. stronger bars might be expected to have larger efficiency factors). This topic will require further investigation using simulations that is outside of the scope of this paper.

Another element that we ignore in this paper but could affect the efficiency factor is magnetic fields. Magnetic stresses can help removing further angular momentum from the infalling gas, thus leading to increased inflow rates (Kim & Stone 2012). Indeed, magnetic stresses have been suggested to be an important ingredient in the fuelling of the nuclear ring of NGC 1097 (Beck et al. 2005; Lopez-Rodriguez et al. 2021). Thus, it might turn out that the efficiency factor should be increased when magnetic fields are taken into account.

Finally, we have neglected that a small amount of star formation might occur while the gas is traversing the bar lanes. However, this will give a contribution of few per cent at most since the dynamical time-scale that it takes for the gas to cross the lanes (~ 40 Myr) is small compared to typical gas star formation depletion times (~ 1 Gyr).

5.1.3 Uncertainty from the bar pattern speed and galaxy orientation

Further sources of uncertainty are the assumed inclination angle i , position angle, and bar pattern speed Ω_p . Fig. 7 shows how the total time-averaged inflow rate changes if these parameters are varied between plausible ranges, where the red dashed vertical lines represent the 1σ uncertainties. The uncertainty in the bar pattern speed is based on Lin et al. (2013), while the uncertainties in the inclination and position angles are taken from table 2 of Lang et al. (2020). Table 2 shows the corresponding errors on the inflow rates.

5.1.4 Summary

Summing all sources of errors in quadrature, our estimate for the total inflow rate obtained summing both bar lanes in NGC 1097 is $\dot{M} = 3.0 \pm 2.1 M_\odot \text{ yr}^{-1}$. Table 2 provides a summary of all the sources of uncertainty discussed above and their associated error.

5.2 Mass balance in the nuclear ring

Mass conservation in a cylindrical volume containing the nuclear ring (e.g. $R < 1$ kpc and $|z| < 300$ pc) implies

$$\dot{M} = \text{SFR} + \dot{M}_{\text{out}} + \dot{M}_{\text{ring}}, \quad (11)$$

where \dot{M} is the bar-driven accretion rate on to the ring, SFR is the star formation rate in the ring, \dot{M}_{out} is the mass lost from the ring due to outflowing gas, and \dot{M}_{ring} is the rate of change of the total gas mass in the ring. In this paper, we have found $\dot{M} = 3.0 \pm 2.1 M_\odot \text{ yr}^{-1}$. There is tentative evidence for a central molecular outflow in NGC 1097, with an estimated rate of $\dot{M}_{\text{out}} \sim 0.6 M_\odot \text{ yr}^{-1}$, but further analyses are required to confirm this (Stuber et al. 2021).

The SFR in the nuclear ring has been estimated to be $\simeq 1.8\text{--}2 M_\odot \text{ yr}^{-1}$ (Sandstrom et al. 2010; Hsieh et al. 2011; Prieto et al. 2019; Lopez-Rodriguez et al. 2021; Song et al. 2021). Thus, most of

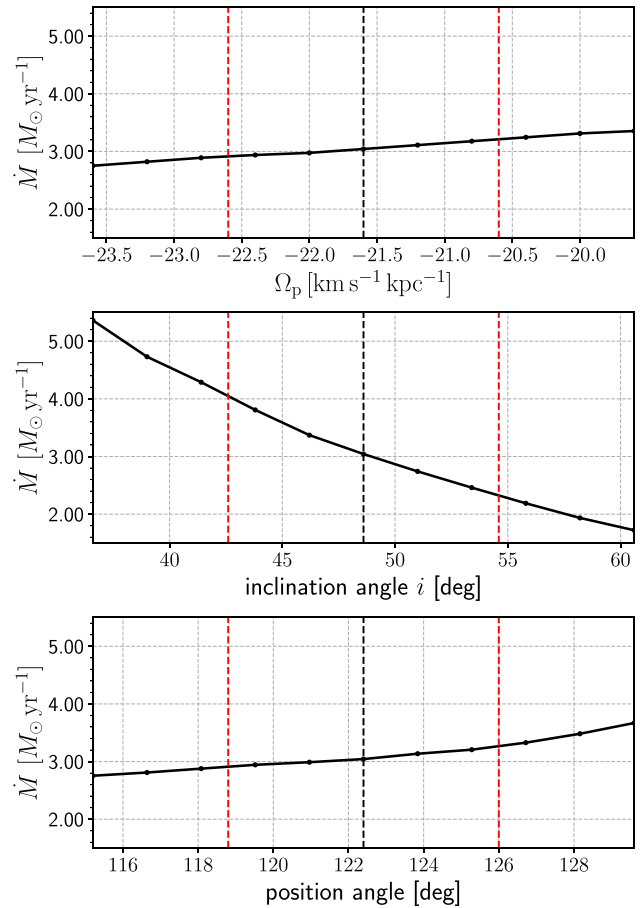


Figure 7. Time-averaged total inflow rate in NGC 1097 as a function of assumed parameters. *Top*: bar pattern speed. *Middle*: inclination angle. *Bottom*: position angle. The black dashed lines indicate the fiducial values. The red dashed lines indicate the 1σ uncertainty ranges.

Table 2. Summary of uncertainties on the total inflow rate.

Source of error	Contribution to $\delta\dot{M} (M_\odot \text{ yr}^{-1})$
α_{CO}	1.5
ϵ	1.2
Ω_p	0.15
Inclination angle, i	0.9
Position angle	0.2
Total in quadrature	2.1

the currently inflowing gas is being consumed by star formation. This suggests that the inflow is causally controlling the SFR in the nuclear ring of NGC 1097, as predicted by the hydrodynamical simulations of Seo et al. (2019), Sormani et al. (2020), and Moon et al. (2021, 2022).

For comparison, in the Milky Way we currently have $\dot{M} \simeq 0.8 \pm 0.6 M_\odot \text{ yr}^{-1}$, $\dot{M}_{\text{out}} \gtrsim 0.6 M_\odot \text{ yr}^{-1}$, and $\text{SFR} \simeq 0.1 M_\odot \text{ yr}^{-1}$ (Henshaw et al. 2022). Thus, both NGC 1097 and the Milky Way appear compatible with a rough mass balance between inflow, outflow, and SFR, without a net mass accumulation in the ring ($\dot{M}_{\text{ring}} \simeq 0$) that is sometimes invoked to eventually lead to a future burst of star formation.

5.3 Limitations of equation (5)

Equation (5) has $\sin(\theta)$ in the denominator. This term goes to zero when the bar lane becomes perpendicular to the line of sight. Thus, our method produces large errors when a galaxy has this orientation. For NGC 1097 this is not a significant issue, since it happens only in the innermost part of bar lane 1, which, as discussed in Section 4, does not affect our estimation of the inflow rates. For galaxies where the bar lanes are almost parallel to the line of nodes (e.g. NGC 1300; Lang et al. 2020), this issue becomes more important and some other way to estimate v_{\parallel} should be used.

Another limitation of equation (5) is the following. This equation makes sense only if $v_{\parallel} > 0$, i.e. the numerator and denominator have the same sign, otherwise the gas would be climbing upstream the bar lanes, which is unphysical within our simplified steady-state picture. In practice, this condition means that the $\Omega_p x \sin i$ line (dashed line in the bottom panels of Fig. 2) and v_{los} from the spline interpolation (blue and red lines in the same figure) should never cross. This condition is satisfied for NGC 1097. However, it might not be satisfied in other galaxies. Numerical simulations from Tress et al. (2020) show that it can happen that some portions of the bar lane move upstream for a brief moment of time, i.e. ‘against the current’ (see their fig. 16). As explained in their section 5, this happens when gas on the bar lane collides with clouds overshooting from the bar lane on the other side. We found preliminary evidence of a similar behaviour in NGC 4535 when visually inspecting the PHANGS-ALMA CO datacube. The dynamics of these events are not taken into account in our simplified formula based on a steady-state picture.

5.4 Can we trust the fluctuations in inflow rate?

As mentioned in Section 4, the inflow rates shown in Fig. 6 at $t \geq 10$ Myr fluctuate by a factor of a few as a function of time over typical time-scales $\Delta t \sim 10$ Myr. Will these fluctuations correspond to real temporary boosts in the future inflow rate?

Closer inspection reveals, as one might expect, that the peaks in the top panel of Fig. 6 correspond to dense clumps/clouds in the CO distribution in Fig. 2. When these clumps reach the nuclear ring, they will likely cause a boost in the inflow rate. However, due to the stochasticity of the accretion process, it might happen that one of these clouds overshoots and misses the nuclear ring entirely (e.g. Hatchfield et al. 2021). Thus, the more precise answer to the question above is the following: while Fig. 6 gives a fairly good idea of the order of magnitude of the typical fluctuations, it can predict when the inflow rates will increase only in a probabilistic sense.

5.5 Comparison to previous works

Prieto et al. (2019) crudely estimated the mass rate arriving at the ring by approximating the bar lane as a cylinder with diameter $D = 600$ pc and using the formula $\dot{M} = 2D^2 n f f_{\text{lane}} v_{\text{flow}}$, where $f f_{\text{lane}} = 0.02$ is their estimated ‘area’ filling factor, n is their estimated volume density, and $v_{\text{flow}} = 350 \text{ km s}^{-1}$ is their estimated flow velocity at the entrance of the ring. They obtained $\dot{M} \gtrsim 3 M_{\odot} \text{ yr}^{-1}$, consistent with our estimate. The fact that the two estimates are so similar is likely a coincidence due to fortuitous balancing of factors in their formula given the fact that the individual factors are quite different from the values used in this paper (e.g. their flow velocity is much higher than the velocities we estimated in Fig. 5), their large uncertainties in the individual factors, and that their estimate only takes into account the ‘arrival’ region very close to the ring, which we have excluded from our analysis (see Section 4).

6 CONCLUSION

We have applied a simple geometrical method to PHANGS-ALMA CO data to derive the mass inflow rate on to the nuclear ring of the barred galaxy NGC 1097. The method allows one to estimate the inflow rate given the mass density and line-of-sight velocity along the bar lanes, the bar pattern speed, and the galaxy orientation. The PHANGS-ALMA CO data set is ideal for this purpose thanks to having the high spatial resolution needed to resolve the bar lanes, as well as the sensitivity and the short-spacing data to recover a full picture of the emission, both of which are required for accurate mass measurements.

We found a total inflow rate of $\dot{M} = (3.0 \pm 2.1) M_{\odot} \text{ yr}^{-1}$ averaged over a time span of 40 Myr, which fluctuates by a factor of few over a typical time-scale $\Delta t \sim 10$ Myr. The main uncertainty on our estimated value of the inflow rate comes from the $\alpha_{\text{CO},j}^{(2-1)}$ factor used to convert $^{12}\text{CO } J = 2 \rightarrow 1$ line luminosity to gas mass.

Most of the inflow is currently being consumed by star formation in the nuclear ring at a rate of $\text{SFR} \simeq 1.8\text{--}2 M_{\odot} \text{ yr}^{-1}$ (Hsieh et al. 2011; Prieto et al. 2019; Song et al. 2021). This suggests that the inflow is causally controlling the star formation in the ring, as predicted by simulations of star formation in nuclear rings of barred galaxies (Seo et al. 2019; Sormani et al. 2020; Moon et al. 2021, 2022).

ACKNOWLEDGEMENTS

MCS and RSK thank for support from the European Research Council via the ERC Synergy Grant ‘ECOGAL – Understanding our Galactic ecosystem: from the disk of the Milky Way to the formation sites of stars and planets’ (grant 855130), from the Heidelberg Cluster of Excellence (EXC 2181–390900948) ‘STRUCTURES’, funded by the German Excellence Strategy, and from the German Ministry for Economic Affairs and Climate Action in project ‘MAINN’ (funding ID 50002206). They also acknowledge computing resources provided by the Ministry of Science, Research and the Arts (MWK) of the State of Baden-Württemberg through bwHPC and DFG through grant INST 35/1134-1 FUGG and for data storage at SDS@hd through grant INST 35/1314-1 FUGG. MCS acknowledges financial support from the Royal Society (URF\R1\221118). ATB and FB acknowledge funding from the European Research Council (ERC) under the European Union’s Horizon 2020 research and innovation programme (grant agreement no. 726384/Empire). The work of JS was partially supported by the Natural Sciences and Engineering Research Council of Canada (NSERC) through the Canadian Institute for Theoretical Astrophysics (CITA) National Fellowship. JMDK acknowledges funding from the European Research Council (ERC) under the European Union’s Horizon 2020 research and innovation programme via the ERC Starting Grant MUSTANG (grant agreement no. 714907). COOL Research DAO is a decentralized autonomous organization supporting research in astrophysics aimed at uncovering our cosmic origins. JDH gratefully acknowledges financial support from the Royal Society (University Research Fellowship; URF\R1\221620). RJS gratefully acknowledges an STFC Ernest Rutherford fellowship (grant ST/N00485X/1). RCL acknowledges support provided by a National Science Foundation (NSF) Astronomy and Astrophysics Postdoctoral Fellowship under award AST-2102625. MQ acknowledges support from the Spanish grant PID2019-106027GA-C44, funded by MCIN/AEI. ES and JN acknowledge funding from the European Research Council (ERC) under the European Union’s Horizon 2020 research and innovation programme (grant agreement no. 694343). KG was supported by the Australian Research Council through the Discovery Early Career

Researcher Award (DECRA) Fellowship (project no. DE220100766) funded by the Australian Government. She was also supported by the Australian Research Council Centre of Excellence for All Sky Astrophysics in 3 Dimensions (ASTRO 3D), through project no. CE170100013. SKS acknowledges financial support from the German Research Foundation (DFG) via Sino-German research grant SCHI 536/11-1. Y-HT acknowledges funding support from NRAO Student Observing Support Grant SOSPADA-012 and from the National Science Foundation (NSF) under grant no. 2108081. EJW gratefully acknowledges funding from the German Research Foundation (DFG) in the form of an Emmy Noether Research Group (grant no. KR4598/2-1, PI Kreckel). CE acknowledges funding from the Deutsche Forschungsgemeinschaft (DFG) Sachbeihilfe, grant no. BI1546/3-1.

DATA AVAILABILITY

The data underlying this article are from the ALMA project ADS/JAO.ALMA#2017.1.00886.L, and are available through the following link: <https://www.canfar.net/storage/list/phangs/RELEASES/PHANGS-ALMA/>. ALMA is a partnership of ESO (representing its member states), NSF (USA) and NINS (Japan), together with NRC (Canada), MOST and ASIAA (Taiwan), and KASI (Republic of Korea), in cooperation with the Republic of Chile. The Joint ALMA Observatory is operated by ESO, AUI/NRAO, and NAOJ.

REFERENCES

- Anand G. S. et al., 2021, *MNRAS*, 501, 3621
- Armillotta L., Krumholz M. R., Di Teodoro E. M., McClure-Griffiths N. M., 2019, *MNRAS*, 490, 4401
- Athanassoula E., 1992, *MNRAS*, 259, 345
- Barth A. J., Ho L. C., Filippenko A. V., Sargent W. L., 1995, *AJ*, 110, 1009
- Beck R., Fletcher A., Shukurov A., Snodin A., Sokoloff D. D., Ehle M., Moss D., Shoutenkov V., 2005, *A&A*, 444, 739
- Bittner A. et al., 2020, *A&A*, 643, A65
- Bolatto A. D., Wolfire M., Leroy A. K., 2013, *ARA&A*, 51, 207
- Combes F., 2021, *Active Galactic Nuclei: Fueling and feedback*. IoP Publishing, Bristol
- Comerón S., Knapen J. H., Beckman J. E., Laurikainen E., Salo H., Martínez-Valpuesta I., Buta R. J., 2010, *MNRAS*, 402, 2462
- Davies R. I., Müller Sánchez F., Genzel R., Tacconi L. J., Hicks E. K. S., Friedrich S., Sternberg A., 2007, *ApJ*, 671, 1388
- de Sá-Freitas C. et al., 2023, *A&A*, 671, A8
- den Brok J. S. et al., 2021, *MNRAS*, 504, 3221
- Englmaier P., Gerhard O., 1997, *MNRAS*, 287, 57
- Fragkoudi F., Athanassoula E., Bosma A., 2016, *MNRAS*, 462, L41
- Fux R., 1999, *A&A*, 345, 787
- Gadotti D. A. et al., 2019, *MNRAS*, 482, 506
- García-Burillo S., Combes F., Schinnerer E., Boone F., Hunt L. K., 2005, *A&A*, 441, 1011
- García-Burillo S. et al., 2009, *A&A*, 496, 85
- Hatchfield H. P., Sormani M. C., Tress R. G., Battersby C., Smith R. J., Glover S. C. O., Klessen R. S., 2021, *ApJ*, 922, 79
- Henshaw J. D., Barnes A. T., Battersby C., Ginsburg A., Sormani M. C., Walker D. L., 2022, preprint ([arXiv:2203.11223](https://arxiv.org/abs/2203.11223))
- Holmes L. et al., 2015, *MNRAS*, 451, 4397
- Hsieh P.-Y., Matsushita S., Liu G., Ho P. T. P., Oi N., Wu Y.-L., 2011, *ApJ*, 736, 129
- Hummel E., van der Hulst J. M., Keel W. C., 1987, *A&A*, 172, 32
- Israel F. P., 2020, *A&A*, 635, A131
- Kim W.-T., Stone J. M., 2012, *ApJ*, 751, 124
- Kim S. S., Saitoh T. R., Jeon M., Figer D. F., Merritt D., Wada K., 2011, *ApJ*, 735, L11
- Kim W.-T., Seo W.-Y., Stone J. M., Yoon D., Teuben P. J., 2012, *ApJ*, 747, 60
- Kormendy J., Kennicutt R. C. J., 2004, *ARA&A*, 42, 603
- Kruijssen J. M. D., Longmore S. N., Elmegreen B. G., Murray N., Bally J., Testi L., Kennicutt R. C., 2014, *MNRAS*, 440, 3370
- Lang P. et al., 2020, *ApJ*, 897, 122
- Lee J. C. et al., 2022, *ApJS*, 258, 10
- Leroy A. K. et al., 2021a, *ApJS*, 255, 19
- Leroy A. K. et al., 2021b, *ApJS*, 257, 43
- Leroy A. K. et al., 2022, *ApJ*, 927, 149
- Lin L.-H., Wang H.-H., Hsieh P.-Y., Taam R. E., Yang C.-C., Yen D. C. C., 2013, *ApJ*, 771, 8
- Lopez-Rodriguez E. et al., 2021, *ApJ*, 923, 150
- Mazzuca L. M., Knapen J. H., Veilleux S., Regan M. W., 2008, *ApJS*, 174, 337
- Moon S., Kim W.-T., Kim C.-G., Ostriker E. C., 2021, *ApJ*, 914, 9
- Moon S., Kim W.-T., Kim C.-G., Ostriker E. C., 2022, *ApJ*, 925, 99
- Nogueras-Lara F. et al., 2020, *Nat. Astron.*, 4, 377
- Padovani P. et al., 2017, *A&AR*, 25, 2
- Pilyugin L. S., Grebel E. K., Kniazev A. Y., 2014, *AJ*, 147, 131
- Ponti G., Morris M. R., Churazov E., Heywood I., Fender R. P., 2021, *A&A*, 646, A66
- Prendergast K. H., 1983, in Athanassoula E., ed., *Proc. IAU Symp. 100, Internal Kinematics and Dynamics of Galaxies*. Reidel, Dordrecht, p. 215
- Prieto M. A., Fernandez-Ontiveros J. A., Bruzual G., Burkert A., Schartmann M., Charlot S., 2019, *MNRAS*, 485, 3264
- Querejeta M. et al., 2021, *A&A*, 656, A133
- Regan M. W., Vogel S. N., Teuben P. J., 1997, *ApJ*, 482, L143
- Rosolowsky E. et al., 2021, *MNRAS*, 502, 1218
- Sandstrom K. et al., 2010, *A&A*, 518, L59
- Sandstrom K. M. et al., 2013, *ApJ*, 777, 5
- Sellwood J. A., Wilkinson A., 1993, *Rep. Prog. Phys.*, 56, 173
- Seo W.-Y., Kim W.-T., Kwak S., Hsieh P.-Y., Han C., Hopkins P. F., 2019, *ApJ*, 872, 5
- Song Y. et al., 2021, *ApJ*, 916, 73
- Sormani M. C., Barnes A. T., 2019, *MNRAS*, 484, 1213
- Sormani M. C., Binney J., Magorrian J., 2015, *MNRAS*, 449, 2421
- Sormani M. C., Treß R. G., Ridley M., Glover S. C. O., Klessen R. S., Binney J., Magorrian J., Smith R., 2018, *MNRAS*, 475, 2383
- Sormani M. C., Tress R. G., Glover S. C. O., Klessen R. S., Battersby C. D., Clark P. C., Hatchfield H. P., Smith R. J., 2020, *MNRAS*, 497, 5024
- Sormani M. C. et al., 2022, *MNRAS*, 512, 1857
- Storchi-Bergmann T., Schnorr-Müller A., 2019, *Nat. Astron.*, 3, 48
- Stuber S. K. et al., 2021, *A&A*, 653, A172
- Sun J. et al., 2020, *ApJ*, 901, L8
- Sun J. et al., 2022, *AJ*, 164, 43
- Sun J. et al., 2023, *ApJ*, 945, L19
- Teng Y.-H. et al., 2022, *ApJ*, 925, 72
- Teng Y.-H. et al., 2023, preprint ([arXiv:2304.04732](https://arxiv.org/abs/2304.04732))
- Tress R. G., Sormani M. C., Glover S. C. O., Klessen R. S., Battersby C. D., Clark P. C., Hatchfield H. P., Smith R. J., 2020, *MNRAS*, 499, 4455
- Veilleux S., Maiolino R., Bolatto A. D., Aalto S., 2020, *A&AR*, 28, 2
- Whitmore B. C. et al., 2023, *MNRAS*, 520, 63
- Yajima Y. et al., 2021, *PASJ*, 73, 257

¹Universität Heidelberg, Zentrum für Astronomie, Institut für theoretische Astrophysik, Albert-Ueberle-Straße 2, D-69120 Heidelberg, Germany

²European Southern Observatory, Karl-Schwarzschild-Straße 2, D-85748 Garching, Germany

³Argelander-Institut für Astronomie, Universität Bonn, Auf dem Hügel 71, D-53121 Bonn, Germany

⁴Department of Physics and Astronomy, McMaster University, 1280 Main Street West, Hamilton, ON L8S 4M1, Canada

⁵Canadian Institute for Theoretical Astrophysics (CITA), University of Toronto, 60 Saint George Street, Toronto, ON M5S 3H8, Canada

⁶Max-Planck-Institut für Astronomie, Königstuhl 17, D-69117 Heidelberg, Germany

⁷Univ Lyon, Univ Lyon1, ENS de Lyon, CNRS, Centre de Recherche Astrophysique de Lyon UMR5574, F-69230 Saint-Genis-Laval, France

⁸*Department of Astronomy, The Ohio State University, 140 West 18th Avenue, Columbus, OH 43210, USA*

⁹*Center for Cosmology and Astroparticle Physics, 191 West Woodruff Avenue, Columbus, OH 43210, USA*

¹⁰*Astrophysics Research Institute, Liverpool John Moores University, 146 Brownlow Hill, Liverpool L3 5RF, UK*

¹¹*Sterrenkundig Observatorium, Universiteit Gent, Krijgslaan 281 S9, B-9000 Gent, Belgium*

¹²*Observatorio Astronómico Nacional (IGN), C/Alfonso XII, 3, E-28014 Madrid, Spain*

¹³*Sub-department of Astrophysics, Department of Physics, University of Oxford, Keble Road, Oxford OX1 3RH, UK*

¹⁴*Institute for Computational Cosmology, Department of Physics, Durham University, South Road, Durham DH1 3LE, UK*

¹⁵*Steward Observatory, University of Arizona, Tucson, AZ 85721, USA*

¹⁶*Research School of Astronomy and Astrophysics, Australian National University, Canberra, ACT 2611, Australia*

¹⁷*ARC Centre of Excellence for All Sky Astrophysics in 3 Dimensions (ASTRO 3D), Australia*

¹⁸*Universität Heidelberg, Interdisziplinäres Zentrum für Wissenschaftliches Rechnen, Im Neuenheimer Feld 205, D-69120 Heidelberg, Germany*

¹⁹*Technical University of Munich, School of Engineering and Design, Department of Aerospace and Geodesy, Chair of Remote Sensing Technology, Arcisstraße 21, D-80333 Munich, Germany*

²⁰*Cosmic Origins Of Life (COOL) Research DAO, coolresearch.io*

²¹*Department of Physics, 4-183 CCIS, University of Alberta, Edmonton, AB T6G 2E1, Canada*

²²*Jodrell Bank Centre for Astrophysics, Department of Physics and Astronomy, University of Manchester, Oxford Road, Manchester M13 9PL, UK*

²³*Center for Astrophysics and Space Sciences, Department of Physics, University of California San Diego, 9500 Gilman Drive, La Jolla, CA 92093, USA*

²⁴*Institute of Physics, Laboratory for galaxy evolution and spectral modelling, EPFL, Observatoire de Sauvigny, Chemin Pegais 51, CH-1290 Versoix, Switzerland*

²⁵*Astronomisches Rechen-Institut, Zentrum für Astronomie der Universität Heidelberg, Mönchhofstraße 12-14, D-69120 Heidelberg, Germany*

This paper has been typeset from a $\text{\TeX}/\text{\LaTeX}$ file prepared by the author.