

# Periarticular metal hypersensitivity complications of hip bearings containing cobalt–chromium

Dongmei Wu<sup>1</sup>, Rohan M Bhalekar<sup>2</sup>, Jordan S Marsh<sup>1</sup>, David J Langton<sup>2</sup> and Alan J Stewart<sup>1</sup>

<sup>1</sup>School of Medicine, University of St. Andrews, St. Andrews, Fife, United Kingdom

<sup>2</sup>ExplantLab, The Biosphere, Newcastle Helix, Newcastle-upon-Tyne, United Kingdom

Correspondence should be addressed to A J Stewart  
**Email**  
ajs21@st-andrews.ac.uk

- Hip joints with bearings composed of cobalt–chromium alloy (metal-on-metal bearings) have been one of the most widely used implants in joint replacement arthroplasty. Unfortunately, these implants can contribute to a complication called aseptic lymphocyte-dominated vasculitis-associated lesion (ALVAL), a type IV metal hypersensitivity response around the joint.
- Consistent with such bearings, increased metal debris can be found in the surrounding fluids and in remote tissues and organs, due to wear and corrosion. It is hypothesized that metal ions released from the prosthesis (including Co<sup>2+</sup>) can potentially form haptens with proteins such as serum albumin in synovial fluid that in turn elicit ALVAL.
- Generally, elevated cobalt and chromium levels in synovial fluids may indicate implant failure. However, such measurements cannot be used as a reliable tool to predict the onset of ALVAL. To detect ALVAL, some diagnostic tests, questionnaires and imaging techniques have been used clinically with some success, but a standardized approach is lacking.
- At present, guidelines for implant usage and patient management are ambiguous and inconsistent across health care authorities. To reduce and better manage the development of ALVAL, further research into the precise molecular mechanism(s) by which ALVAL develops is urgently needed.
- Identification of diagnostic and prognostic biomarkers for ALVAL is required, as are more standardized guidelines for surgery and patient management.

## Keywords

- ▶ metal-on-metal implant
- ▶ metal ion release
- ▶ hip replacement
- ▶ ALVAL
- ▶ immunology

EFORT Open Reviews  
(2022) 7, 758–771

## Introduction

Bearing partners for artificial joint implants are usually composed of ceramic, high-quality plastic or durable metal and are used to replace the damaged joint(s) (i.e. hip, knee, shoulder, ankle and elbow joints). Among a variety of materials used in such prostheses, cobalt–chromium (CoCr)-based devices (consisting of 30–60% Co and 20–30% Cr) became outstandingly popular in the early 2000s due to excellent mechanical properties, biocompatibility and corrosion resistance, with a promising survivorship (1). CoCr alloys have been widely used in metal-on-metal (MoM) hip replacements, femoral component of total knee replacements (TKR) as well as in the ball portion of shoulder replacements. For example, in mid-2000s, approximately 35% of hip arthroplasty (HA) procedures involved MoM implants, and over 1 million MoM HAs have been performed worldwide so far (2, 3).

However, the usage of CoCr alloys in MoM bearings is related to the initiation of a series of complications, including a severe inflammatory response called aseptic lymphocyte-dominated vasculitis-associated lesion (ALVAL), pseudotumor, metallosis, cell death and periprosthetic soft tissue/bone necrosis as well as other health-related concerns (4). Due to high complication rates, their usage in joint arthroplasty (JA) has sharply declined, especially in MoM total hip replacements (THR) where CoCr alloys are not legally marketed in USA and MoM hip resurfacing of CoCr-based devices has been approved in only a limited number of centers (5, 6). Although the usage of CoCr-based devices has been largely decreased, many individuals still live with these implants (7, 8).

ALVAL is a metal hypersensitivity associated with the formation of metal–protein complexes in the surrounding synovial fluid, accompanied by macrophagic infiltration. Joint effusion, bone and soft tissue damage and osteolysis

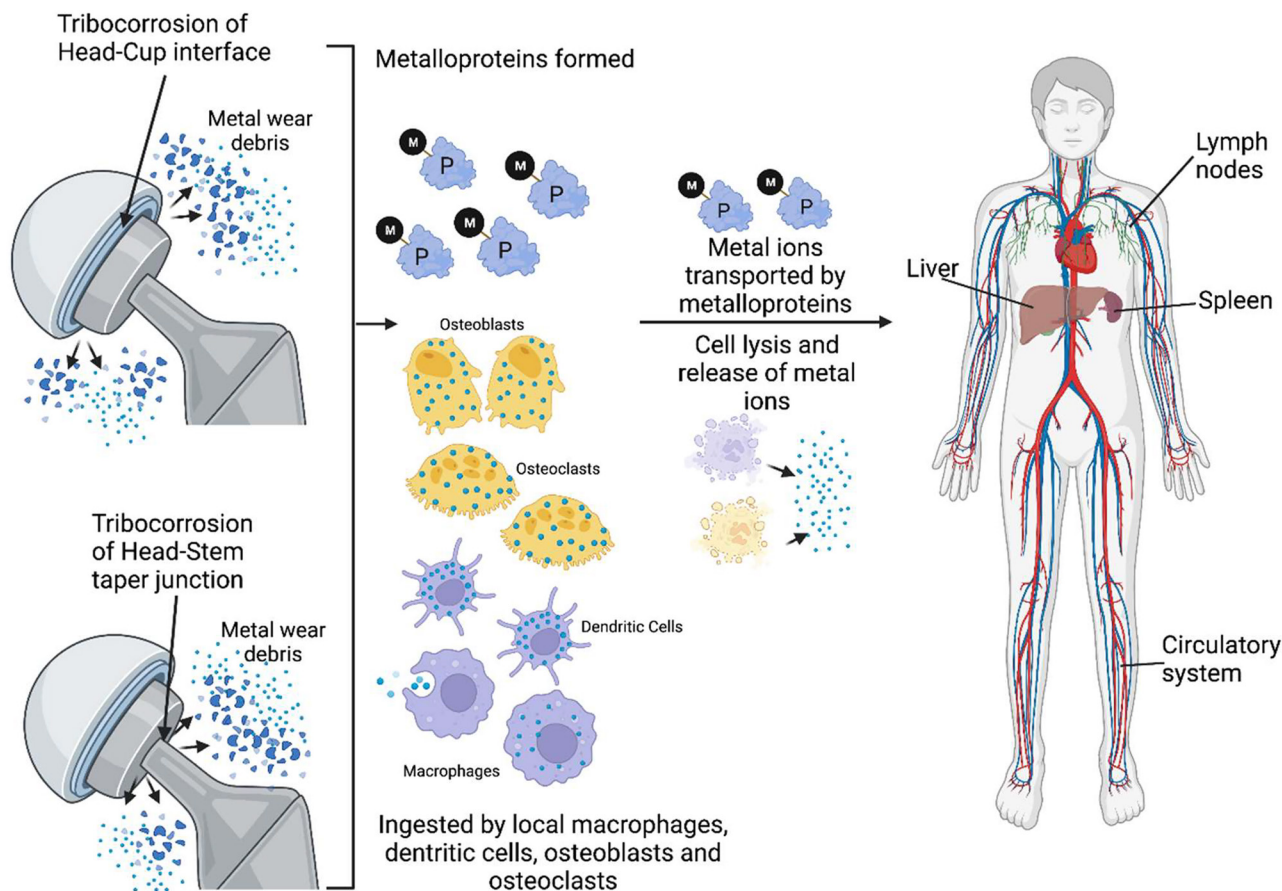
are pronounced features in ALVAL patients (9), with most experiencing persistent pain (especially groin pain in hip JA patients) around the joint (10). Notably, ALVAL is thought to occur in 0.6% of patients with MoM hip bearing; this number was obtained from a pooled estimation consisting of 13,898 MoM hips, with females at greater risk of developing hypersensitivity than males (11). In hip resurfacing, the prevalence of ALVAL is estimated to be at 0.3% in Birmingham hip resurfacings (BHR) and 1.2% in articular surface replacements (ASR) (12, 13). Additionally, the prevalence of failure of MoM THRs secondary to ALVAL has been suggested to be over 30% at 6 years (14). In TKR, the prevalence of severe ALVAL (or pseudotumors) has been reported to reach over 7% at revision surgeries (15). These patients present a typical type IV hypersensitivity (T-lymphocyte-mediated reaction), accompanied with lymphocyte filtration and cytokine expression (16). However, the most important mechanism underlying ALVAL is still largely unknown. In the present review, we outline recent progress made in understanding the by-products released from CoCr alloy prostheses, especially nanoparticles and metal ions, a summary of what is known concerning the immunogenic aspects of ALVAL and an evaluation of the hypothesis that cobalt–human serum albumin (HSA) complexes in some cases may serve as immunogens to elicit ALVAL. Finally, we also provide a perspective on the challenges relating to ALVAL diagnosis and implant management.

#### *Increased cobalt and chromium concentrations are associated with wear and corrosion*

Despite some excellent aspects of CoCr bearings, normal usage can generate by-products including wear debris, metal–protein particles and metal ions via wear and corrosion, triggering local and/or systematic adverse conditions (17, 18). Albeit it is well acknowledged that elevated metal concentrations are associated with CoCr-based implants (particularly in MoM hip replacement and TKR), comprehensive studies about debris properties such as size, diameter and wear volume are mainly focused on MoM implants. Therefore, here, we demonstrated an example of by-products released from MoM hip implants (Fig. 1). Generally, in a MoM hip replacement, wear debris is caused by wear and corrosion (e.g. tribocorrosion) at the head–cup interface and head–stem taper junction (19, 20), and nanocrystal metal–protein particles form on the surface due to the damage of the passive film (21). These particles can damage local tissues and accelerate the release of metal particles and ions (22). In a well-functioning MoM hip prosthesis, the volumetric particle wear rate is  $<1 \text{ mm}^3$  per million cycles compared with  $>100 \text{ mm}^3$  per million cycles in a failure device (23). The sizes of released metal particles are typically  $1 \text{ nm}–1 \text{ }\mu\text{m}$  in diameter, with a mean size  $<50 \text{ nm}$  (9, 24). Such particles are small enough to be

ingested by macrophages, dendritic cells, osteoblasts or osteoclasts or be disseminated throughout the body via the circulatory or lymphatic systems, triggering immune reactions. In addition, released metal ions, either via wear/corrosion or subsequent cell lysis, can disperse into the surrounding fluids and local tissue, with some being able to reach the circulatory system and remote organs. The major metal ions released from CoCr-based implants are  $\text{Co}^{2+}$  and  $\text{Cr}^{3+}$  (25).

Elevated cobalt and chromium concentrations in different fluids and tissues have been reported in patients who have undergone CoCr JA, and abnormal metal ion concentrations are associated with lymphocyte-dominated responses, albeit it is not a positive and causative relationship, due to other factors such as genetics, gender and age also playing significant roles in metal hypersensitivity. Langton *et al.* found that severe ALVAL was related to the elevations of cobalt and chromium concentration in joint fluids (26). A positive association between blood metal ion concentrations and ALVAL was also noted in failed MoM HA (27, 28). A systematic review of 104 studies including 9957 HA patients reported that concentrations of these metals were found to be increased in whole blood, serum, plasma, erythrocytes and urine following implantation (25). In some extreme cases, the serum cobalt level was  $>200 \text{ }\mu\text{g/L}$  (29). High levels of metal ions were also found in TKRs, as critically high levels of mean serum cobalt ( $16.3 \text{ }\mu\text{g/L}$ ) and chromium ( $9.5 \text{ }\mu\text{g/L}$ ) were observed in patients with CoCr modular hinged TKRs (30). In Table 1, we summarize whole-blood/serum cobalt and chromium levels of patients who underwent JAs (including THR, hip resurfacing, TKR and shoulder replacement). Notably, different devices are contributed to different effects on cobalt and chromium levels and failure rates. However, high levels of metal content were more common in MoM hip bearing than those found in knee and shoulder arthroplasties, and no abnormal metal concentrations were found in patients who underwent shoulder replacement procedures in this review. With respect to metal content in patients with MoM hip bearing, a large-scale study conducted to compare metal ion levels from patients who underwent MoM THR and hip resurfacing showed that whole-blood cobalt and chromium concentrations were higher in the THR group than the hip resurfacing group (31). In addition, ASR THR and ASR hip resurfacing have high failure rates of 48.8% and 25%, respectively, at 6 years (14, 32). The National Joint Registry reported a failure rate of 30.3% for ASR hip resurfacing at 15 years, as compared to 10.6% of BHR (33). According to the European Commission, MoM hip implants with a large femoral head have the highest incidence of local reactions and should be avoided due to the high failure rate (34). Similarly, different serum metal ion levels were associated with usage of different systems



**Figure 1**

By-products released from MoM hip implants due to wear and corrosion (e.g. tribocorrosion). By-products including metal wear debris, nanoparticles and free ions can be generated from the head/cup interface and the head/stem taper junction. Either nano- or ionic forms of by-products may form complexes with local proteins or be ingested by local cells including macrophages, dendritic cells, osteoclasts and osteoblasts. As a result, metal ions either transported by metalloproteins or released from cells can be disseminated to distant organs and tissues. Created with BioRender.com.

in TKR, as results demonstrated that megaprosthesis devices contributed to 25 and 9 times higher serum cobalt and chromium levels than standard rotating-hinge knee, respectively (35).

Accumulative metal ions are excreted through urine, and their clearance rates are relatively high. Urine cobalt and chromium were reported to dramatically increase by 35.1-fold and 17.4-fold, respectively, after MoM device implantation (36). Furthermore, whole-blood cobalt and chromium levels decrease to 50% in 2–3 months after implant removal (37). If implants are not removed, metal concentrations in urine remained high (7.8 µg/day for cobalt and 3.9 µg/day for chromium) at 6 years, implying that a relatively high concentration of metal ions circulate in the body due to continuous release of metal debris from the prosthesis (38). Without prompt clearance, metal particles can also be detected in tissues and organs, such as the liver, spleen and lymph nodes (39). Notably, cobalt has now been classified as a hazardous, mutagenic and

toxic substance as well as a carcinogen by the European Chemical Agency and the French Competent Authority (40, 41). However, it has not been definitively proven that CoCr-based implants lead to cancer (42).

Although elevations in cobalt and chromium concentrations are associated with ALVAL, there is no unified ‘safe’ threshold for baseline concentrations for these metal ions in the blood. In well-functioning HA cases, serum cobalt concentrations should be <1 µg/L and not >2 µg/L (34, 43). According to the Medicines and Healthcare Products Regulatory Agency in the UK, patients with MoM hip bearing need to be followed-up when total cobalt concentration in serum is >7 µg/L (44). Additionally, there is controversy as to whether elevated metal levels are useful tools to predict failure of functioning prosthesis or ALVAL and how to understand the role of partitioning of metals in different fluids (serum, whole blood and synovial fluid (SF)). It has been reported that volumetric wear is associated with serum or whole-blood cobalt and chromium levels (which

**Table 1** Comparison of blood cobalt and chromium levels in CoCr JAs.

Reference	Medium	Device type	Patients, n	Duration	Co	Cr
Total hip replacement						
Lainiala <i>et al.</i> (31)	Whole blood	CoCr	1335	Measurement lasts for 12 years	2.5 (0.1;192)	1.7 (0.1;115)
Pozzuoli <i>et al.</i> (105)	Whole blood	Group 1 (n = 34): CoCr (cup and head) Group 2 (n = 34): Ti-6Al-4V (cup)-ceramic (head)	68	Group 1 follow-up: 7 years Group 2 follow-up: 7 years	1.2 (0.6;13.6) 0.6 (0.6;2.5)	0.8 (0.1;7.3) 0.3 (0.1;2.5)
Civinini <i>et al.</i> (106)	Serum	Modular dual-mobility	37	Mean 5.1 years (2–10) after surgery	1.99 (0.07;16.05)	2.08 (0.02;11.8)
Kim <i>et al.</i> (107)	Serum	Bearing (28 mm Metasul, Zimmer); Stem (Wagner Cone, Zimmer (n = 52); CLS Spotorno, Zimmer (n = 19))	71	Follow-up: 5 years	4.14 (0.13;4.14)	6.89 (0.40;6.89)
				Group A (n = 62) follow-up between 5 years and the minimum 10 years (10–18.6 years) Group B (n = 9) follow-up between 5 years and the minimum 10 years (10–18.6 years)	(0.01;1.01) 18.97	(0.20;1.82) 19.37
Lehtovirta <i>et al.</i> (108)	Whole blood	CoCr	69	Follow-up: 30 months	11.0 (0.6;108.5)	3.7 (0.4;29.9)
Ahmed <i>et al.</i> (109)	Whole blood	36 mm CoCr Pinnacle (Corail THA System)	55	Follow-up: 3–9 years	24 ± 29	13.2 ± 13.3
Ando <i>et al.</i> (110)	Whole blood	Magnum group (femoral head between 38 mm and 52 mm) Conventional group; (28 mm or 32 mm femoral head)	116	Magnum group (n = 62) follow-up: 5 years Conventional group (n = 54) follow-up: 5 years	1.16 ± 1.32 3.77 ± 9.8	1.2 ± 1.9 2.6 ± 4.9
Hip resurfacing						
Lainiala <i>et al.</i> (31)	Whole blood	CoCr	890	Measurement lasts for 12 years	1.2 (0.1;225)	1.4 (0.1;125)
Lehtovirta <i>et al.</i> (108)	Whole blood	CoCr	13	Follow-up: 30 months	3.9 (1.5;16.2)	3.9 (1.5;7.2)
Ahmed <i>et al.</i> (109)	Whole blood	ASR, BHR, Cormet (Stryker), Corin (Cirencester, UK)	50	Follow-up: 3–9 years	28.2 ± 44.2	19.6 ± 29.5
Grammatopoulos <i>et al.</i> (27)	Serum	BHR (n = 26); conserve hip resurfacing (n = 12)	38	Follow-up: 11 months (0-37)	4.3 (0.7;67.1) (17.6)	9.1 (1.2;69.5) (15.6)
Underwood <i>et al.</i> (32)	Whole blood	ASR (n = 66) BHR (n = 64)	130	Mean follow-up: 35 months (7-59) Mean follow-up: 49 months (10-121)	13.5 (0.5;167) 10.2 (0;167)	9.8 (0.2;11.9) 4.8 (0.4;183)
Total knee replacement						
Lons <i>et al.</i> (111)	Whole blood	Posterior stabilized TKRs CoCr (Fem) Ti (Tib)	66	Preoperative (mean (min; max)) 1-year follow-up (mean (min; max))	0.23 (0.03;1.18) 1.34 (0.20;2.91)	0.48 (0.02;1.7) 1.23 (0.1;2.81)
Lützner <i>et al.</i> (112)	Plasma	CoCr – Columbus Knee System; Standard – Not coated (n = 59); Coated- AS coating (Cr layer, CrN–CrCN layers and ZrN layer) (n = 61)	120	Standard preoperative  Standard 1-year follow-up Coated preoperative Coated 1-year follow-up	0.67 ± 0.54  0.50 ± 0.44 0.53 ± 0.33 0.45 ± 0.37	0.50 ± 0.42  0.35 ± 0.31 0.54 ± 0.60 0.31 ± 0.15
Savarino <i>et al.</i> (113)	Serum	Group I – Stable TKRs (n = 24) (CoCr (Fem+ Tib)= 7; CoCr (Fem) and Ti (Tib)=17); group II – Failed TKRs (n = 35) (CoCr (Fem + Tib)= 15; CoCr (Fem) and Ti (Tib): 20)	59	Group I: Mean follow-up in months (range): 39 (10 to 108)	0.44 (0.08;4.65)	0.24 (0.06;1.39)

(Continued)

**Table 1** Continued.

Reference	Medium	Device type	Patients, n	Duration	Co	Cr
Reiner <i>et al.</i> (114)	Whole blood	PFC Sigma; CoCr (Fem); Ti (Tib)	22	Group II – Mean follow-up in months (range) 30 (8–74)	1.10 (0.08;8.80)	0.45 (0.06;1.44)
				Preoperative	0.006 (0.005;0.141)	0.251 (0.052;1.297)
Luetzner <i>et al.</i> (115)	Serum	Foundation Knee System CoCr (Fem+ Tib): Unilateral TKR (n = 23), Bilateral TKR (n = 23)	41	1-year follow-up Unilateral : Mean follow-up in 59 months (median 66 months)	0.243 (0.122;0.615)	0.268 (0.000;1.984)
				Bilateral: Mean follow-up in 59 months (median 66 months)	4.28 (2.10;5.40)	0.98 (0.38;1.64)
Garrett <i>et al.</i> (116)	Serum	Profix : CoCr (Fem) (n = 23); OxZr (Fem) (n = 14)	37	CoCr (nmol/L): Mean follow-up in 66 months	3.00 (0.00;91.00)	9.00 (3.00;85.00)
				OxZr (nmol/L): Mean follow-up in 48 months	2.50 (1.00;10.00)	8.0 (1.00;12.00)
Masoumiganjgah <i>et al.</i> (117)	Whole blood (Cr), Serum (Co)	Triathlon Knee System CoCr (n = 11) – ACS Knee System CoCr with titanium nitride coating (n = 11)	22	Triathlon mean follow-up: 50 months (nmol/L)	4 (2;9)	16 (10;19)
				ACS mean follow-up: 50 months (nmol/L)	5 (3;9)	15.5 (10;23)
Gupta <i>et al.</i> (118)	Serum	Attune Knee System CoCr (Fem + Tib)	1	17 months after the primary TKR	2.4 (0.08;0.5 reference)	>1000 (0.06;0.93 reference)
Ho <i>et al.</i> (119)	Serum	Vanguard System – Custom titanium alloy (Ti-6Al-4V)	1	24 months after the primary TKR	0.3	0.4
Kenny <i>et al.</i> (120)	Whole blood	AGC Total Knee System, Modular Design	1	84 months after the primary TKR	8.65	2.35
Liu <i>et al.</i> (121)	Whole blood	Loosened (n = 20)- 4 Ti-6Al-4V + 16 CoCr; stable (n = 20) - 5 Ti-6Al-4V + 16 CoCr; Control (n = 20) – no implant	60	Loosened	116.1 ± 49.2	108.1 ± 40.7
				Stable Control	0.9 ± 0.9 0.8 ± 0.5	10.1 ± 2.9 5.8 ± 2.6
Shoulder replacement Reiner <i>et al.</i> (122)	Whole blood	TSA group anatomic TSA: TESS (The Total Evolutive Shoulder System; Biomet): 11 Simpliciti (Tornier, Bloomington, MN, USA)); 6, Aequalis Anatomical (Tornier): 3 RSA group reverse TSA: Aequalis Reversed Shoulder Prosthesis (Tornier): 20	40	Control (n = 23)	0.11 (0.03–0.19)	0.14 (0.04–0.99)
				TSA mean follow-up: 29.5 (8-52) months (n = 20)	0.15 (0.03–0.48)	0.31 (0.09–1.26)
				RSA mean follow-up: 25.7 (19-37) months (n = 20)	0.18 (0.1–0.66)	0.48 (0.17–2.41)
Pareek <i>et al.</i> (123)	Whole blood	Stryker ReUnion	72	Preoperative	0.38 ± 0.43	0.31 ± 0.43
				1-year follow-up	0.45 ± 0.49	0.31 ± 0.47

Co and Cr concentration in µg/L or ng/mL; AGC, anatomic graduated component; ASR, articular surface replacement; BHR, Birmingham hip resurfacing; Co, cobalt; CoCr, cobalt–chromium; Cr, chromium; CrN-CrCN, chromium nitride–chromium carbonitride; Fem, femoral component; JA, joint arthroplasty; OxZr, oxidized zirconium; PFC, press-fit condylar; RSA, reverse shoulder arthroplasty; THA, total hip arthroplasty; Ti-6Al-4V, titanium alloy; Tib, tibial tray; TKR, total knee replacement; TSA, total shoulder arthroplasty; ZrN, zirconium nitride.

are reliable indicators of performance of MoM-bearing surfaces) and recommended that a level of whole-blood cobalt at 4.5 µg/L should be used as a detection tool for identifying abnormal wear (only recommended for hip

resurfacing cases) (45). A cobalt:chromium joint fluid ratio >1 indicates severe ALVAL in hip replacement, and an elevated whole blood:serum chromium ratio can assist to detect ALVAL and abnormal wear processes (46). However,



these baseline values are only considered as potential criteria for MoM HA according to current guidelines. No consensus thresholds of metal levels indicating ALVAL or prosthesis failure are available for TKR or other joint replacements using CoCr-based implants. Therefore, it is not known whether these guidelines may be implied following knee and shoulder replacements using CoCr-based implants.

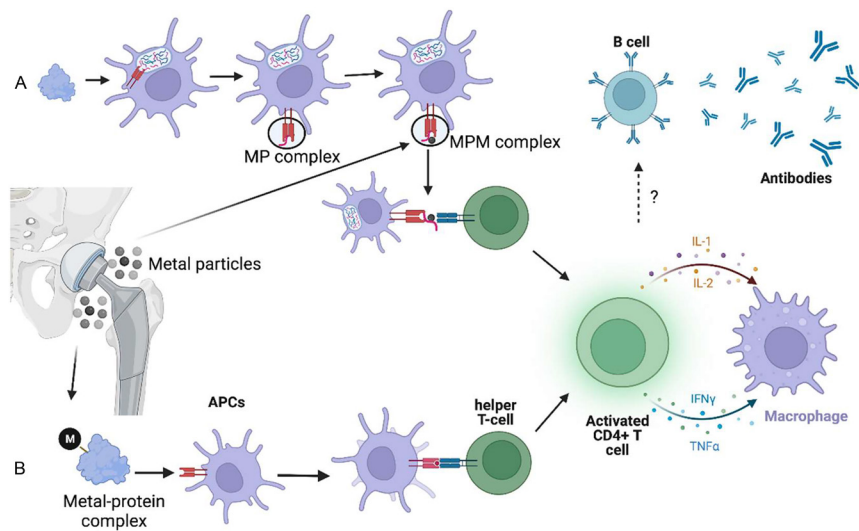
**Immunology of ALVAL**

The most accepted mechanism for the development of ALVAL is lymphocyte-mediated hypersensitivity to metal debris, also known as the type IV or delayed-type hypersensitive response. Here metal debris released from CoCr implants can potentially bind to peri-prosthetic or plasma proteins to form complexes that become haptens. These are then presented to T-cell receptors (TCRs) on the surface of helper T-cells (generally purported to be the CD4+ T<sub>H-1</sub> subtype) by antigen-presenting cells (APCs). After activation, CD4+ T<sub>H-1</sub>-cells proliferate and excrete cytokines, including interleukin-1 (IL-1), IL-2, tumor necrosis factor-α and interferon-γ (IFN-γ) to stimulate macrophages and heighten inflammatory responses (Fig. 2) (47).

The involvement of T-cells in metal hypersensitivity has been well documented, but the effect of increased metal ion concentrations on which types and subtypes of T-cells is ambiguous. Revell *et al.* analyzed CD4+ T-cell subtypes and inducible co-stimulator (ICOS) surface expression in peripheral blood (PB) and SF of patients with failed MoM hip replacement by flow cytometry. ICOS is a homodimeric protein expressed specifically on the surface of T-cells, which enhances T-cell proliferation and antigen presentation. It also aids lymphokine secretion, promotes cell–cell interactions and boosts B-cell expression (48). They found

that although the percentage of CD4+ T-cell subtypes was similar in PB, their subtype distribution was altered between PB and SF. In the SF, CD4+ T-central memory and T-naïve cells decreased, while T-effector memory cells that can enter inflamed sites rapidly increase in number in addition to increased cytokine release. Moreover, ICOS was increased on the surface of CD4+CD28+ T-cells in PB and SF (49). A randomized study also found the percentages of HLA-DR+CD4+ and HLA-DR+CD8+ T-cells were positively correlated with the concentrations of cobalt and chromium (28, 50). Paradoxically, some studies reported that T-cell lymphopenia was associated with cobalt release from CoCr devices. Hart *et al.* determined that CD3+ and CD8+ T-cell subset counts were significantly reduced in patients that underwent MoM hip replacement surgeries (51). A previous study also showed that cobalt and chromium concentrations in blood were associated with CD8+ T-cell reduction in asymptomatic patients with well-fixed MoM hip resurfacing (52).

However, knowledge of exactly how T-cells participate in ALVAL is still elusive. Some DQA1/DQB1 haplotypes presented with a high predicted affinity to serum albumin were more common in ALVAL patients (53). HLA sequencing showed that DQA1\*02:01, DQB1\*02:02 and DRB1\*07:01 were significantly positive with ALVAL. Additionally, DQA1\*02:01–DQB1\*02:02 had the highest affinity binding to the N-terminal sequence of albumin, while DQA1\*01:01–DQB1\*05:01 exhibited the lowest binding affinity, which was found in patients without ALVAL in a high frequency (54). Another study showed that in patients with MoM bearings, CD86 and HLA-DR molecule expression on the surface of APCs is increased, strongly implying the presence of an immune response (55).



**Figure 2**

Mechanisms for metal presentation to helper T-cells. (A) Antigen-presenting cells (APCs) digest endogenous or exogenous proteins, and the digested peptides can compete for the binding groove of major histocompatibility complex (MHC) molecules forming a MHC:peptide (MP) complex, which are then transported to the cell surface. Released metal ions from the implant can cross-link the MP complex (forming MHC:peptide:metal (MPM) complex) with T-cell receptors (TCRs), leading to helper T-cell activation; (B) Preformed metal–protein complexes are presented by APCs and recognized by TCRs, resulting in helper T-cell activation. Activated T-cells excrete cytokines that can recruit and activate macrophages. However, involvement of B-cells and antibodies in ALVAL has not been determined. Created with BioRender.com.

Despite the involvement of T-cells, cytokines are known to be significant contributors in the activation of immune reactions related to arthroplasty failure. Hallob *et al.* reported that patients who underwent MoM THRs exhibited a higher concentration of IFN- $\gamma$  and IL-2 but significantly lower lymphocyte proliferation than individuals without implants (56). Dapunt *et al.* quantified cytokine gene expression in patients with MoM bearing and found that IL-1 $\beta$ , IL-8, MIP2 $\alpha$ , MRP-14 and IP-10 genes from peri-prosthetic tissues were more highly expressed than in samples taken from more distant tissues (57). Furthermore, cytokine levels including IL-6, IL-8 and IP-10 and VEGF in peri-prosthetic fluid positively correlate with the severity of ALVAL (58). The involvement of cytokines implies that local inflammatory responses may occur after implantation. Furthermore, this also suggests that metal implants elicit cell-mediated metal hypersensitivity in these patients and that cytokines play a role.

ALVAL may occur due to activation of the endothelium by cobalt or chromium released from CoCr implants (and thus not relate to the formation of metal–protein (auto)antigens (59). Laboratory studies suggested that the release of IL-8, MCP-1 and ICAM-1 is involved in the process of lymphocyte transendothelial migration from PB to inflammatory sites (60, 61). Activated endothelial cells can release IL-8 and MCP-1 which can trigger a transition in circulating lymphocytes to the adhesion state. ICAM-1 helps lymphocytes migrate through the endothelial layer to inflammatory locations. It was suggested that Co<sup>2+</sup> ions may play a role in the activation of endothelium cells and in the upregulation of IL-8, MCP-1 and ICAM-1 release (59, 62). In addition, Co<sup>2+</sup> promoted the adhesion of lymphocytes to endothelium cells and transendothelial migration.

Toll-like receptors (TLRs) are also reported to be involved in the development of ALVAL. TLR4 is a receptor that binds bacterial lipopolysaccharide and plays a crucial role in regulating dendritic cell functioning and initiation of immune response (63, 64). Similarly, Co<sup>2+</sup> ions can activate TLR4. Co<sup>2+</sup> may bind to residues His456 and His458 which could facilitate TLR4 dimerization, the initial step for TLR4 receptor activation (62). Increased expression of IL-6, MCP-1, IL-8, CCL20 and CXCL10 through activation of TLR4 by Co<sup>2+</sup> has been observed *in vitro* (65, 66, 67, 68, 69). These cytokines can recruit and direct inflammatory cells and lymphocytes to the site of inflammation.

#### Other adverse reactions related to abnormal metal concentrations

In addition to ALVAL, there are other conditions related to the abnormally high concentrations of metals associated with CoCr implants. However, the boundaries between disorders and conditions related to metallic wear debris are ambiguous. For example, diffuse lymphocytic infiltrate

accompanied by extensive tissue necrosis is frequently observed in some patients (70). In addition, a macrophage-dominated histology is frequently found in ALVAL (71). Intriguingly, a macrophage response predominantly induced by larger wear debris was characterized by histocyte accumulation on the surface of local soft tissues, while ALVAL mainly induced by smaller volumes of metal debris was seen in deeper locations, such as fat and muscle (70, 72). Therefore, it has been suggested that the term ALVAL could be altered to adverse local tissue reactions (ALTR) in cases where it is important to collectively classify and describe a cohort of adverse reactions associated with artificial CoCr implants, including when vasculitis is absent and/or adverse reactions to metal debris (ARMD) (4).

There are three major features of ALTR/ARMD (including pseudotumor, metallosis and cell death and peri-prosthetic tissue necrosis), regarding histopathological examinations of peri-prosthetic soft tissue and bone (4). Pseudotumor(s) is a generic term to describe peri-prosthetic soft tissue masses formed with variable size and content in joint replacement, associated with high levels of cobalt and chromium in blood (73). The term ‘pseudotumor’ is frequently misused as a synonym of ALVAL. However, the most distinctive feature of pseudotumors is the cell composition of inflammatory infiltrate, rather than the presence of lymphocyte-dominated reactions that are predominantly featured in ALVAL. The incidence of pseudotumor development in MoM implant hip replacement surgeries is reported to be high; around 28% of patients who received BHR hip resurfacing were found to develop pseudotumors and 28.6% of cases with small-head (28 mm) MoM THRs developed pseudotumors (74, 75). However, the incidence of pseudotumors may be underestimated due to asymptomatic cases and incidental discovery (73). Additionally, female gender, age and implants with a large head are high risk factors for pseudotumor development (76, 77). In histological studies, both non-specific inflammatory responses and hypersensitivity reactions in response to metal wear were seen in the pseudotumor cases. This suggests that it is not only macrophages that participate in the process of pseudotumor formation but also lymphocytes (72, 78).

Metallosis is a term used to describe the accumulation of metal debris around joint fluid, peri-prosthetic tissues and/or bone marrow, potentially leading to toxic effects on various organs and systems triggered by high metal levels in blood (79, 80). It is reported to be a rare complication with a prevalence of around 5% in MoM hip replacements (79). However, it cannot be used as a diagnostic terminology to define implant failure as it fails to distinguish the complexity of metallic wear debris generated by various mechanisms, devices and positions (4). Additionally, metallosis is only a descriptive term that infers the presence of a variable amount of metal wear

debris but does not offer any measurable threshold of the content. Therefore, it is necessary to substitute and/or expand metallosis with specific wear in addition of other histopathologic diagnose to offer a better understanding and management of ALTR/ARMD.

Cell death, predominantly found in macrophages, is one the major features of ALTR/ARMD. Shed metal particles are initially phagocytosed mainly by macrophages, leading to the release of cytokines and other inflammatory components into the surrounding environment. Phagocytosed wear debris is oxidative reactive and can induce cytotoxicity, resulting in cell death and lysis (81, 82). *In vitro*, induction of cell death either via apoptosis or via necrosis of macrophages is dependent on metal ion levels and incubation time (83). Additionally, the degree of cell death is correlated with the presence of metal debris as compared with non-metal wear (84). Notably, macrophagic death results in re-release of wear debris, leading to a vicious cycle of macrophagic recruitment and death, aggregating inflammatory reactions and surrounding tissue damage (85). Necrosis and inflammation of peri-prosthetic soft tissue is also seen in ALTR/ARMD. In a MoM hip resurfacing study, substantial necrosis and inflammation was observed in the peri-prosthetic connective tissue in response of metal particles, accompanied with macrophage and lymphocyte infiltration (86). However, more research should be performed to elucidate the different effects of metal particles on mechanisms and subtypes of necrosis.

#### *Metal-protein complexes as immunogens?*

##### *Metal hypersensitivity: nickel–HSA complex as a model*

Some metal ions, such as Ni<sup>2+</sup>, Be<sup>2+</sup>, Co<sup>2+</sup>, Cr<sup>3+</sup>, Cu<sup>2+</sup>, Cd<sup>2+</sup>, and Hg<sup>2+</sup>, are reported to be related to skin hypersensitivity, and some can even induce autoimmune diseases (87). Nickel-induced contact hypersensitivity is perhaps the most studied of such conditions. Released Ni<sup>2+</sup> ions are allergens which can induce the production and release of different kinds of cytokines and chemokines. The resultant molecules can activate APCs and nickel-specific T cells, which eventually cause complex immune responses in the body (88). The dominant form of nickel in the body is the Ni<sup>2+</sup>–HSA complex. HSA is the primary transporter of Ni<sup>2+</sup>, binding to the first three residues of the N-terminus (Asp1, Ala2 and His3) (89). The Ni<sup>2+</sup>–HSA complex is considered as an inducer to activate T cells and promote transient contact between TCRs and APC-exposed HLA (90). Although nickel-induced hypersensitivity is well established, the content of nickel in a CoCr device is low (only 1%), compared to the levels of cobalt and chromium (37). Regarding Cr<sup>3+</sup>, transferrin (not HSA) is the preferred binding protein in plasma (91).

#### *Co<sup>2+</sup>–HSA complex: binding properties and a potential immunogen*

HSA is the predominant protein in plasma (ca. 600–700 μM) and SF (around 66% of total protein in SF) (92, 93, 94). HSA was described as the main carrier of Co<sup>2+</sup> in the blood, with two major binding sites located at N-terminal sequence (NTS and site B) and one located at the interface between domains I and II (site A) identified so far (91). NTS was previously proposed to be the primary Co<sup>2+</sup>-binding site (95, 96, 97, 98). However, current evidence indicates that site B (partially composed of His9 and Asp13) is more likely the principal binding site for Co<sup>2+</sup> rather than NTS (99, 100). Although NTS is not the primary (or even secondary) binding site for Co<sup>2+</sup>, it still can in theory bind to Co<sup>2+</sup> if these are present at sufficiently high levels. Furthermore, patients with an HLA class II genotype that encodes a protein with peptide-binding grooves possessing greater affinity for the N-terminal sequence of HSA have a greater risk of developing delayed-type hypersensitivity (54). Therefore, although yet to be proven, cobalt–HSA complexes are considered to be potential immunogens which can elicit ALVAL (101).

#### *Follow-up guidelines of patient management*

Some authorities and regulatory bodies have published guidelines for MoM HAs and patient management. However, there remains no single consensus with different regulatory agencies providing different guidelines. This is far from ideal and leads to uncertainty for surgeons and other health care professionals. Some current guidelines are summarized below.

##### *The American Food and Drugs Administration (FDA)*

Long-term follow-up of patients with MoM hip implants every 1–2 years is recommended by FDA. Patients with higher risk of developing ALTR/ARMD are advised to take closer follow-up. These include patients with bilateral implants or with resurfacing systems with small femoral heads (≤44 mm), female patients, those receiving high doses of corticosteroids and those with renal insufficiency, suppressed immune systems, evidence of suboptimal alignment of device components, suspected metal sensitivity (e.g. cobalt, chromium, nickel), severe obesity (body mass index (BMI) > 40) or high levels of physical activity. Routine long-term follow-up of asymptomatic patients (every 1–2 years) is recommended. However, with respect to symptomatic patients with MoM hip implants, follow-up should occur at least every 6 months, and metal ion testing is also needed. Additionally, metal artifact reduction sequence (MARS)-MRI is recommended to detect potential ALTR/ARMD (102).



### *The European SCENIHR (Scientific Committee on Emerging and Newly Identified Health Risks)*

For asymptomatic patients with MoM hip implants, regular follow-up is suggested, but time intervals and tools of investigation are dependent on implant category and local protocols. With respect to symptomatic patients, annual follow-up is necessary for all implants, especially for large-head MoM THR ( $\geq 36$  mm) and hip resurfacing. For the latter, annual follow-up is recommended for the first 5 years and can be changed to local protocols if metal ion levels are not significantly increased. However, annual follow-up for the life of implants is recommended for some patients with MoM hip resurfacing, with higher risk including small component size, female gender and so on. For patients with abnormal clinical and/or radiographic examination or dramatically elevated metal ion levels, ultrasound, CT and/or MRAS-MRI are recommended. Cobalt levels in whole blood between 2 and 7  $\mu\text{g/L}$  can be treated as a threshold value for necessitating further investigation (34).

### *Medicines and Healthcare Products Regulatory Agency*

An annual follow-up is compulsory for certain patients with or without symptoms. These include all patients with a larger femoral head size ( $\geq 36$  mm) in stemmed THRs, all patients with DePuy ASR hip resurfacing devices, female patients with hip resurfacing systems or male patients with small femoral head resurfacing systems ( $\leq 48$  mm). In addition, annual follow-up is necessary for symptomatic patients with MoM hip resurfacing (male and femoral head diameter  $>48$  mm) and small-head MoM THR (femoral head diameter  $<36$  mm). Whole-blood cobalt and/or chromium levels  $\geq 7$  ppb are indicator for closer follow-up and cross-sectional imaging. MARS-MRI or ultrasound are recommended to all symptomatic cases and/or patients with elevated metal ion levels (103).

### *European multidisciplinary consensus statement*

Systematic follow-up is recommended for all patients with MoM THRs and hip resurfacing. For asymptomatic patients with small-head THRs, follow-up should be occurred as frequent as conventional THRs, but annual follow-up is necessary for large-head THRs. In the case of hip resurfacing, annual follow-up is recommended for the first 5 years and may be changed to local protocols based on metal ion levels. However, patients with higher risk such as those with small-size femoral components ( $<50$  mm), female gender and low coverage arc, annual follow-up is recommended for the life of the implant. During follow-up, x-ray examination is recommended for all patients, and additional imaging including ultrasound, CT and MARS-MRI should be applied in case of clinical/radiographic abnormality and/or excessive metal ion

levels. Particularly, cobalt levels within the range of 2–7  $\mu\text{g/L}$  is of clinical concern (104).

## Conclusions

Current evidence indicates that metal debris levels are generally increased in the surrounding fluids. This is likely to contribute to ALVAL in patients who have received such implants. ALVAL is associated with lymphocyte infiltration around the joint and is accompanied by macrophage infiltration, along with destruction of local tissues, including bone, muscle and neurovascular structures. Current studies have suggested that a metal–protein complex (possibly the cobalt–HSA complex) acts as a hapten that elicits ALVAL. However, further work is needed to support this hypothesis, and, if confirmed, how such a complex presents to T-cells and immune components such as APCs and B cells that participate in this response. HSA is the predominant metal ion carrier in the plasma. However, knowledge of other potential proteins in SF which can bind metal ions and act as haptens that elicit metal hypersensitivity should be investigated. Although some techniques discussed above are useful to diagnose ALVAL, there are still no tools to predict which patients are at most risk of developing ALVAL. A novel genetic predisposition (HLA-DQ haplotypes) test has been proposed to guide implant selection and inform on postoperative management. Additionally, an annual physical examination and metal ion concentration test could be useful for early diagnosis of such complications. Finally, there are no fully standardized guidelines available relating to the use of CoCr implants. More precise and standard criteria (e.g. peri-prosthetic tissue sampling for histopathological analysis) should also be established between clinics and regulatory agencies for revision surgery (4).

### **ICMJE Conflict of Interest Statement**

The authors declare no conflict of interest.

### **Funding**

The authors gratefully acknowledge the China Scholarship Council for funding a PhD scholarship for DW.

### **Author contribution statement**

Conceptualization and writing: DM, DJL and AJS; review and editing: DW, RMB, JSM, DJL and AJS. All authors have read and agreed to the published version of the manuscript.

## References

1. Liao Y, Hoffman E, Wimmer M, Fischer A, Jacobs J & Marks L. CoCrMo metal-on-metal hip replacements. *Physical Chemistry Chemical Physics* 2013 **15** 746–756. (<https://doi.org/10.1039/c2cp42968c>)

2. Centers for Disease Control and Prevention (CDC) (<https://www.cdc.gov/mmwr/preview/mmwrhtml/mm5816a2.htm>). Prevalence and most common causes of disability among adults—United States, 2005. *MMWR. Morbidity and Mortality Weekly Report* 2009 **58** 421–426. (<https://www.cdc.gov/mmwr/preview/mmwrhtml/mm5816a2.htm>)
3. Hunt LP, Whitehouse MR, Beswick A, Porter ML, Howard P & Blom AW. Implications of introducing new technology: comparative survivorship modeling of metal-on-metal hip replacements and contemporary alternatives in the National Joint Registry. *Journal of Bone and Joint Surgery. American Volume* 2018 **100** 189–196. (<https://doi.org/10.2106/JBJS.17.00039>)
4. Perino G, De Martino I, Zhang L, Xia Z, Gallo J, Natsu S, Langton D, Huber M, Rakow A, Schoon J, et al. The contribution of the histopathological examination to the diagnosis of adverse local tissue reactions in arthroplasty. *EFFORT Open Reviews* 2021 **6** 399–419. (<https://doi.org/10.1302/2058-5241.6.210013>)
5. Pijls BG, Meessen JM, Tucker K, Stea S, Steenbergen L, Marie Fenstad A, Mäkelä K, Cristian Stoica I, Goncharov M, Overgaard S, et al. MoM total hip replacements in Europe: a NORE report. *EFFORT Open Reviews* 2019 **4** 423–429. (<https://doi.org/10.1302/2058-5241.4.180078>)
6. US Food and Drug Administration. Metal-on-Metal hip implant systems 2019. Available at: <https://www.fda.gov/medical-devices/metal-metal-hip-implants/information-orthopaedic-surgeons> (Accessed on 4 August 2022).
7. National Joint Registry: Public and Patient Guide to the NJR's 14th Annual Report 2017. Available at: <https://reports.njrcentre.org.uk/Downloads> (Accessed on 21 March 2022).
8. Cobb AG & Schmalzreid TP. The clinical significance of metal ion release from cobalt-chromium metal-on-metal hip joint arthroplasty. *Proceedings of the Institution of Mechanical Engineers. Part H, Journal of Engineering in Medicine* 2006 **220** 385–398. (<https://doi.org/10.1243/09544119JEM78>)
9. Willert HG, Buchhorn GH, Fayyazi A, Flury R, Windler M, Köster G & Lohmann CH. Metal-on-metal bearings and hypersensitivity in patients with artificial hip joints: a clinical and histomorphological study. *Journal of Bone and Joint Surgery. American Volume* 2005 **87** 28–36. (<https://doi.org/10.2106/JBJS.A.02039pp>)
10. Rajpura A, Porter ML, Gambhir AK, Freemont AJ & Board TN. Clinical experience of revision of metal on metal hip arthroplasty for aseptic lymphocyte dominated vasculitis associated lesions (ALVAL). *Hip International* 2011 **21** 43–51. (<https://doi.org/10.5301/hip.2011.6276>)
11. Wiley KF, Ding K, Stoner JA, Teague DC & Yousuf KM. Incidence of pseudotumor and acute lymphocytic vasculitis associated lesion (ALVAL) reactions in metal-on-metal hip articulations: a meta-analysis. *Journal of Arthroplasty* 2013 **28** 1238–1245. (<https://doi.org/10.1016/j.arth.2013.03.027>)
12. Carrothers AD, Gilbert RE, Jaiswal A & Richardson JB. Birmingham hip resurfacing: the prevalence of failure. *Journal of Bone and Joint Surgery. British Volume* 2010 **92** 1344–1350. (<https://doi.org/10.1302/0301-620X.92B10.23504>)
13. Jameson S, Ramisetty N, Langton D, Webb J, Logishetty R & Nargol A. ALVAL: diagnosis, incidence and treatment in contemporary metal-on-metal bearings. *Orthopaedic Proceedings* 2010 **92-B** 301–302.
14. Langton DJ, Jameson SS, Joyce TJ, Gandhi JN, Sidaginamale R, Mereddy P, Lord J & Nargol AV. Accelerating failure rate of the ASR total hip replacement. *Journal of Bone and Joint Surgery. British Volume* 2011 **93** 1011–1016. (<https://doi.org/10.1302/0301-620X.93B8.26040>)
15. Kurmis AP, Herman A, McIntyre AR, Masri BA & Garbuz DS. Pseudotumors and high-grade aseptic lymphocyte-dominated vasculitis-associated lesions around total knee replacements identified at aseptic revision surgery: findings of a large-scale histologic review. *Journal of Arthroplasty* 2019 **34** 2434–2438. (<https://doi.org/10.1016/j.arth.2019.05.025>)
16. Thomas P, von der Helm C, Schopf C, Thomsen M, Frommelt L, Schneider J, Flaig M, Krenn V, Mazoochian F & Summer B. Periimplant histology and cytokine pattern in metal-allergic knee arthroplasty patients with improvement after revision with hypoallergenic materials. *Seminars in Arthroplasty* 2012 **23** 268–272. (<https://doi.org/10.1053/j.sart.2013.01.011>)
17. Jacobs JJ, Hallab NJ, Urban RM & Wimmer MA. Wear particles. *Journal of Bone and Joint Surgery. American Volume* 2006 **88**(Supplement 2) 99–102. (<https://doi.org/10.2106/JBJS.F00102>)
18. Koerten HK, Onderwater JJ, Koerten EW, Bernoski FP & Nelissen RG. Observations at the articular surface of hip prostheses: an analytical electron microscopy study on wear and corrosion. *Journal of Biomedical Materials Research* 2001 **54** 591–596. ([https://doi.org/10.1002/1097-4636\(20010315\)54:4<591::aid-jbm160>3.0.co;2-a](https://doi.org/10.1002/1097-4636(20010315)54:4<591::aid-jbm160>3.0.co;2-a))
19. Onda K, Nagoya S, Kaya M & Yamashita T. Cup-neck impingement due to implant malposition as a possible mechanism for metallosis in metal-on-metal total hip arthroplasty. *Orthopedics* 2008 **31** 396. (<https://doi.org/10.3928/01477447-20080401-27>)
20. Mischler S & Muñoz AI. Wear of CoCrMo alloys used in metal-on-metal hip joints: a tribocorrosion appraisal. *Wear* 2013 **297** 1081–1094. (<https://doi.org/10.1016/j.wear.2012.11.061>)
21. Pourzal R, Theissmann R, Morlock M & Fischer A. Micro-structural alterations within different areas of articulating surfaces of a metal-on-metal hip resurfacing system. *Wear* 2009 **267** 689–694. (<https://doi.org/10.1016/j.wear.2009.01.012>)
22. Yan Y, Neville A, Dowson D, Williams S & Fisher J. Effect of metallic nanoparticles on the biotribocorrosion behaviour of metal-on-metal hip prostheses. *Wear* 2009 **267** 683–688. (<https://doi.org/10.1016/j.wear.2008.12.110>)
23. Madl AK, Liang M, Kovochich M, Finley BL, Paustenbach DJ & Oberdörster G. Toxicology of wear particles of cobalt-chromium alloy metal-on-metal hip implants Part I: Physicochemical properties in patient and simulator studies. *Nanomedicine : Nanotechnology, Biology, and Medicine* 2015 **11** 1201–1215. (<https://doi.org/10.1016/j.nano.2014.12.005>)
24. Bowsher JG, Hussain A, Williams PA & Shelton JC. Metal-on-metal hip simulator study of increased wear particle surface area due to 'severe'patient activity. *Proceedings of the Institution of Mechanical Engineers. Part H, Journal of Engineering in Medicine* 2006 **220** 279–287. (<https://doi.org/10.1243/09544119JEM93>)
25. Hartmann A, Hannemann F, Lütznert J, Seidler A, Drexler H, Günther KP & Schmitt J. Metal ion concentrations in body fluids after implantation of hip replacements with metal-on-metal bearing—systematic review of clinical and epidemiological studies. *PLoS One* 2013 **8** e70359. (<https://doi.org/10.1371/journal.pone.0070359>)
26. Langton DJ, Sidaginamale RP, Joyce TJ, Bowsher JG, Holland JP, Deehan D, Nargol AV & Natsu S. Aseptic lymphocyte-dominated vasculitis-associated lesions are related to changes in metal ion handling in the joint capsules of metal-on-metal hip arthroplasties. *Bone and Joint Research* 2018 **7** 388–396. (<https://doi.org/10.1302/2046-3758.76.BJR-2018-0037>)
27. Grammatopoulos G, Munemoto M, Pollalis A & Athanasou NA. Correlation of serum metal ion levels with pathological changes of ARMD in failed metal-on-metal-hip-resurfacing arthroplasties. *Archives of Orthopaedic and Trauma Surgery* 2017 **137** 1129–1137. (<https://doi.org/10.1007/s00402-017-2723-x>)

- 28. Hailer NP, Bengtsson M, Lundberg C & Milbrink J.** High metal ion levels after use of the ASR™ device correlate with development of pseudotumors and T cell activation. *Clinical Orthopaedics and Related Research* 2014 **472** 953–961. (<https://doi.org/10.1007/s11999-013-3307-x>)
- 29. Langton DJ, Jameson SS, Joyce TJ, Webb J & Nargol AVF.** The effect of component size and orientation on the concentrations of metal ions after resurfacing arthroplasty of the hip. *Journal of Bone and Joint Surgery. British Volume* 2008 **90** 1143–1151. (<https://doi.org/10.1302/0301-620X.90B9.20785>)
- 30. Gramlich Y, Hofmann L, Kress S, Ruckes C, Kemmerer M, Klug A, Hoffmann R & Kremer M.** Critically high metal ion levels found in metal-on-metal modular hinged knee arthroplasty: a comparison of two different systems. *Bone and Joint Journal* 2022 **104-B** 376–385. (<https://doi.org/10.1302/0301-620X.104B3.BJJ-2021-0492.R2>)
- 31. Lainiala O, Karsikas M, Reito A & Eskelinen A.** Whole blood chromium concentration is very rarely elevated independently of whole blood cobalt. *Scientific Reports* 2021 **11** 12352. (<https://doi.org/10.1038/s41598-021-91512-9>)
- 32. Underwood R, Matthies A, Cann P, Skinner JA & Hart AJ.** A comparison of explanted articular Surface Replacement and Birmingham Hip Resurfacing components. *Journal of Bone and Joint Surgery. British Volume* 2011 **93** 1169–1177. (<https://doi.org/10.1302/0301-620X.93B9.26511>)
- 33.** *National Joint Registry.* 18th Annual Report 2021. Available at: <https://reports.njrcentre.org.uk/Downloads> (Accessed on 21 March 2022).
- 34.** Scientific Committee on Emerging and Newly Identified Health Risks (SCENIHR). *Opinion on: the safety of Metal-on-Metal joint replacements with a particular focus on hip implants.* European Commission 2014. (Available at: [https://ec.europa.eu/health/scientific\\_committees/emerging/docs/scenih\\_r\\_o\\_042.pdf](https://ec.europa.eu/health/scientific_committees/emerging/docs/scenih_r_o_042.pdf) (Accessed on 21 March 2022)).
- 35. Friesenbichler J, Maurer-Ertl W, Sadoghi P, Lovse T, Windhager R & Leithner A.** Serum metal ion levels after rotating-hinge knee arthroplasty: comparison between a standard device and a megaprosthesis. *International Orthopaedics* 2012 **36** 539–544. (<https://doi.org/10.1007/s00264-011-1317-4>)
- 36. MacDonald SJ, McCalden RW, Chess DG, Bourne RB, Rorabeck CH, Cleland D & Leung F.** Metal-on-metal versus polyethylene in hip arthroplasty: a randomized clinical trial. *Clinical Orthopaedics and Related Research* 2003 **406** 282–296. (<https://doi.org/10.1097/01.blo.0000043066.62337.9d>)
- 37. Durrani SK, Noble PC, Sampson B, Panetta T, Liddle AD, Sabah SA, Chan NK, Skinner JA & Hart AJ.** Changes in blood ion levels after removal of metal-on-metal hip replacements: 16 patients followed for 0–12 months. *Acta Orthopaedica* 2014 **85** 259–265. (<https://doi.org/10.3109/17453674.2014.913223>)
- 38. Daniel J, Ziaee H, Pradhan C & McMinn DJ.** Six-year results of a prospective study of metal ion levels in young patients with metal-on-metal hip resurfacings. *Journal of Bone and Joint Surgery. British Volume* 2009 **91** 176–179. (<https://doi.org/10.1302/0301-620X.91B2.21654>)
- 39. Urban RM, Jacobs JJ, Tomlinson MJ, Gavrilovic J, Black J & Peoc'h M.** Dissemination of wear particles to the liver, spleen, and abdominal lymph nodes of patients with hip or knee replacement. *Journal of Bone and Joint Surgery. American Volume* 2000 **82** 457–476. (<https://doi.org/10.2106/00004623-200004000-00002>)
- 40.** Agence Nationale de Sécurité du Médicament et des Produits de Santé (ANSM). *Évolution réglementaire impactant les dispositifs médicaux qui contiennent du cobalt 2021.* Available at: <https://ansm.sante.fr/actualites/evolution-reglementaire-impactant-les-dispositifs-medicaux-qui-contiennent-du-cobalt> (Accessed on 21 March 2022).
- 41.** European Chemicals Agency (ECHA). Substance information. Available at: <https://echa.europa.eu/substance-information/-/substanceinfo/100.028.325> (Accessed on 4 August 2022).
- 42. Cohen D.** How safe are metal-on-metal hip implants? *BMJ* 2012 **344** e1410. (<https://doi.org/10.1136/bmj.e1410>)
- 43. Delaunay C, Petit I, Learmonth ID, Oger P & Vendittoli PA.** Metal-on-metal bearings total hip arthroplasty: the cobalt and chromium ions release concern. *Orthopaedics and Traumatology, Surgery and Research* 2010 **96** 894–904. (<https://doi.org/10.1016/j.otsr.2010.05.008>)
- 44.** Medicines and Healthcare products Regulatory Agency (MHRA). Medical device alert: action (MDA/2010/033). *MHRA* 2010. Available at: <http://www.jisrf.org/pdfs/mediacld-device-alert.pdf> (Accessed on 21 March 2022).
- 45. Sidaginamale RP, Joyce TJ, Lord JK, Jefferson R, Blain PG, Nargol AV & Langton DJ.** Blood metal ion testing is an effective screening tool to identify poorly performing metal-on-metal bearing surfaces. *Bone and Joint Research* 2013 **2** 84–95. (<https://doi.org/10.1302/2046-3758.25.2000148>)
- 46. Langton DJ, Natu S, Harrington CF, Bowsher JG & Nargol AVF.** Is the synovial fluid cobalt-to-chromium ratio related to the serum partitioning of metal debris following metal-on-metal hip arthroplasty? *Bone and Joint Research* 2019 **8** 146–155. (<https://doi.org/10.1302/2046-3758.83.BJR-2018-0049.R1>)
- 47. Hallab N, Merritt K & Jacobs JJ.** Metal sensitivity in patients with orthopaedic implants. *Journal of Bone and Joint Surgery. American Volume* 2001 **83** 428–436. (<https://doi.org/10.2106/00004623-200103000-00017>)
- 48. Hutloff A, Dittrich AM, Beier KC, Eljaschewitsch B, Kraft R, Anagnostopoulos I & Kroczeck RA.** ICOS is an inducible T-cell co-stimulator structurally and functionally related to CD28. *Nature* 1999 **397** 263–266. (<https://doi.org/10.1038/16717>)
- 49. Revell PA, Matharu GS, Mittal S, Pynsent PB, Buckley CD & Revell MP.** Increased expression of inducible co-stimulator on CD4+ T-cells in the peripheral blood and synovial fluid of patients with failed hip arthroplasties. *Bone and Joint Research* 2016 **5** 52–60. (<https://doi.org/10.1302/2046-3758.52.2000574>)
- 50. Hailer NP, Blaheta RA, Dahlstrand H & Stark A.** Elevation of circulating HLA DR+ CD8+ T-cells and correlation with chromium and cobalt concentrations 6 years after metal-on-metal hip arthroplasty: a randomized trial. *Acta Orthopaedica* 2011 **82** 6–12. (<https://doi.org/10.3109/17453674.2010.548028>)
- 51. Hart AJ, Skinner JA, Winship P, Faria N, Kulinskaya E, Webster D, Muirhead-Allwood S, Aldam CH, Anwar H & Powell JJ.** Circulating levels of cobalt and chromium from metal-on-metal hip replacement are associated with CD8+ T-cell lymphopenia. *Journal of Bone and Joint Surgery. British Volume* 2009 **91** 835–842. (<https://doi.org/10.1302/0301-620X.91B6.21844>)
- 52. Hart AJ, Hester T, Sinclair K, Powell JJ, Goodship AE, Pele L, Fersht NL & Skinner J.** The association between metal ions from hip resurfacing and reduced T-cell counts. *Journal of Bone and Joint Surgery. British Volume* 2006 **88** 449–454. (<https://doi.org/10.1302/0301-620X.88B4.17216>)
- 53. Langton DJ, Sidaginamale R, Wells S, et al.** Is there a genetic predisposition to ALVAL? *Orthopaedic Proceedings* 2019 **101** 25.
- 54. Langton DJ, Bhalekar RM, Joyce TJ, Rushton SP, Wainwright BJ, Nargol ME, Shyam N, Lie BA, Pabbruwe MB, Stewart AJ, et al.** The influence of



HLA genotype on the development of metal hypersensitivity following joint replacement. *Communications Medicine* 2022 **2** 73. (<https://doi.org/10.1038/s43856-022-00137-0>)

**55. Whittingham-Jones PM, Dunstan E, Altaf H, Cannon SR, Revell PA & Briggs TW.** Immune responses in patients with metal-on-metal hip articulations: a long-term follow-up. *Journal of Arthroplasty* 2008 **23** 1212–1218. (<https://doi.org/10.1016/j.arth.2007.10.015>)

**56. Hallab NJ, Anderson S, Stafford T, Glant T & Jacobs JJ.** Lymphocyte responses in patients with total hip arthroplasty. *Journal of Orthopaedic Research* 2005 **23** 384–391. (<https://doi.org/10.1016/j.orthres.2004.09.001>)

**57. Dapunt U, Giese T, Lasitschka F, Reinders J, Lehner B, Kretzer JP, Ewerbeck V & Hänsch GM.** On the inflammatory response in metal-on-metal implants. *Journal of Translational Medicine* 2014 **12** 74. (<https://doi.org/10.1186/1479-5876-12-74>)

**58. Nagle D.** *The immunological profile of intrarticular fluid is different in patients with metal-on-metal compared to those with osteoarthritis controls, with several cytokine markers showing impressive elevations.* UC San Diego. School of Medicine 2016. Available at: (<https://escholarship.org/uc/item/4dt6w3s8> (Accessed on 21 March 2022)).

**59. Ninomiya JT, Kuzma SA, Schnettler TJ, Krolkowski JG, Struve JA & Weihsrauch D.** Metal ions activate vascular endothelial cells and increase lymphocyte chemotaxis and binding. *Journal of Orthopaedic Research* 2013 **31** 1484–1491. (<https://doi.org/10.1002/jor.22377>)

**60. Cai JP, Hudson S, Ye MW & Chin YH.** The intracellular signaling pathways involved in MCP-1-stimulated T cell migration across microvascular endothelium. *Cellular Immunology* 1996 **167** 269–275. (<https://doi.org/10.1006/cimm.1996.0035>)

**61. Rahman A & Fazal F.** Hug tightly and say goodbye: role of endothelial ICAM-1 in leukocyte transmigration. *Antioxidants and Redox Signaling* 2009 **11** 823–839. (<https://doi.org/10.1089/ars.2008.2204>)

**62. Raghavan B, Martin SF, Esser PR, Goebeler M & Schmidt M.** Metal allergens nickel and cobalt facilitate TLR4 homodimerization independently of MD2. *EMBO Reports* 2012 **13** 1109–1115. (<https://doi.org/10.1038/embor.2012.155>)

**63. Rachmawati D, Bontkes HJ, Verstege MI, Muris J, von Blomberg BM, Scheper RJ & van Hoogstraten IM.** Transition metal sensing by Toll-like receptor-4: next to nickel, cobalt and palladium are potent human dendritic cell stimulators. *Contact Dermatitis* 2013 **68** 331–338. (<https://doi.org/10.1111/cod.12042>)

**64. Iwasaki A & Medzhitov R.** Toll-like receptor control of the adaptive immune responses. *Nature Immunology* 2004 **5** 987–995. (<https://doi.org/10.1038/ni1112>)

**65. Bäckhed F, Normark S, Schweda EK, Oscarson S & Richter-Dahlfors A.** Structural requirements for TLR4-mediated LPS signalling: a biological role for LPS modifications. *Microbes and Infection* 2003 **5** 1057–1063. ([https://doi.org/10.1016/s1286-4579\(03\)00207-7](https://doi.org/10.1016/s1286-4579(03)00207-7))

**66. Lawrence H, Deehan D, Holland J, Kirby J & Tyson-Capper A.** The immunobiology of cobalt: demonstration of a potential aetiology for inflammatory pseudotumours after metal-on-metal replacement of the hip. *Bone and Joint Journal* 2014 **96-B** 1172–1177. (<https://doi.org/10.1302/0301-620X.96B9.33476>)

**67. Queally JM, Devitt BM, Butler JS, Malizia AP, Murray D, Doran PP & O'Byrne JM.** Cobalt ions induce chemokine secretion in primary human osteoblasts. *Journal of Orthopaedic Research* 2009 **27** 855–864. (<https://doi.org/10.1002/jor.20837>)

**68. Lawrence H, Deehan DJ, Holland JP, Anjum SA, Mawdesley AE, Kirby JA & Tyson-Capper AJ.** Cobalt ions recruit inflammatory cells in vitro through human

toll-like receptor 4. *Biochemistry and Biophysics Reports* 2016 **7** 374–378. (<https://doi.org/10.1016/j.bbrep.2016.07.003>)

**69. Anjum SA, Lawrence H, Holland JP, Kirby JA, Deehan DJ & Tyson-Capper AJ.** Effect of cobalt-mediated toll-like receptor 4 activation on inflammatory responses in endothelial cells. *Oncotarget* 2016 **7** 76471–76478. (<https://doi.org/10.18632/oncotarget.13260>)

**70. Berstock JR, Baker RP, Bannister GC & Case CP.** Histology of failed metal-on-metal hip arthroplasty; three distinct sub-types. *Hip International* 2014 **24** 243–248. (<https://doi.org/10.5301/hipint.5000117>)

**71. Campbell P, Park SH & Ebramzadeh E.** Semi-quantitative histology confirms that the macrophage is the predominant cell type in metal-on-metal hip tissues. *Journal of Orthopaedic Research* 2022 **40** 387–395. (<https://doi.org/10.1002/jor.25040>)

**72. Campbell P, Ebramzadeh E, Nelson S, Takamura K, De Smet K & Amstutz HC.** Histological features of pseudotumor-like tissues from metal-on-metal hips. *Clinical Orthopaedics and Related Research* 2010 **468** 2321–2327. (<https://doi.org/10.1007/s11999-010-1372-y>)

**73. Pandit H, Glyn-Jones S, McLardy-Smith P, Gundle R, Whitwell D, Gibbons CL, Ostlere S, Athanasou N, Gill HS & Murray DW.** Pseudotumours associated with metal-on-metal hip resurfacings. *Journal of Bone and Joint Surgery. British Volume* 2008 **90** 847–851. (<https://doi.org/10.1302/0301-620X.90B7.20213>)

**74. Bisschop R, Boomsma MF, Van Raay JJ, Tiebosch AT, Maas M & Gerritsma CL.** High prevalence of pseudotumors in patients with a Birmingham Hip Resurfacing prosthesis: a prospective cohort study of one hundred and twenty-nine patients. *Journal of Bone and Joint Surgery. American Volume* 2013 **95** 1554–1560. (<https://doi.org/10.2106/JBJS.L.00716>)

**75. Moon JK, Kim Y, Hwang KT, Yang JH, Ryu JA & Kim YH.** Prevalence and natural course of pseudotumours after small-head metal-on-metal total hip arthroplasty: a minimum 18-year follow-up study of a previous report. *Bone and Joint Journal* 2019 **101-B** 317–324. (<https://doi.org/10.1302/0301-620X.101B3.BJJ-2018-1054.R1>)

**76. Glyn-Jones S, Pandit H, Kwon YM, Doll H, Gill HS & Murray DW.** Risk factors for inflammatory pseudotumour formation following hip resurfacing. *Journal of Bone and Joint Surgery. British Volume* 2009 **91** 1566–1574. (<https://doi.org/10.1302/0301-620X.91B12.22287>)

**77. Bosker BH, Ettema HB, van Rossum M, Boomsma MF, Kollen BJ, Maas M & Verheyen CC.** Pseudotumor formation and serum ions after large head metal-on-metal stemmed total hip replacement. Risk factors, time course and revisions in 706 hips. *Archives of Orthopaedic and Trauma Surgery* 2015 **135** 417–425. (<https://doi.org/10.1007/s00402-015-2165-2>)

**78. Grammatopoulos G, Pandit H, Kamali A, Maggiani F, Glyn-Jones S, Gill HS, Murray DW & Athanasou N.** The correlation of wear with histological features after failed hip resurfacing arthroplasty. *Journal of Bone and Joint Surgery. American Volume* 2013 **95** e81. (<https://doi.org/10.2106/JBJS.L.00775>)

**79. Oliveira CA, Candelária IS, Oliveira PB, Figueiredo A & Caseiro-Alves F.** Metallosis: a diagnosis not only in patients with metal-on-metal prostheses. *European Journal of Radiology Open* 2015 **2** 3–6. (<https://doi.org/10.1016/j.ejro.2014.11.001>)

**80. Bradberry SM, Wilkinson JM & Ferner RE.** Systemic toxicity related to metal hip prostheses. *Clinical Toxicology* 2014 **52** 837–847. (<https://doi.org/10.3109/15563650.2014.944977>)



- 81. Ricciardi BF, Nocon AA, Jerabek SA, Wilner G, Kaplowitz E, Goldring SR, Purdue PE & Perino G.** Histopathological characterization of corrosion product associated adverse local tissue reaction in hip implants: a study of 285 cases. *BMC Clinical Pathology* 2016 **16** 3. (<https://doi.org/10.1186/s12907-016-0025-9>)
- 82. Scharf B, Clement CC, Zolla V, Perino G, Yan B, Elci SG, Purdue E, Goldring S, Macaluso F, Cobelli N, et al.** Molecular analysis of chromium and cobalt-related toxicity. *Scientific Reports* 2014 **4** 5729. (<https://doi.org/10.1038/srep05729>)
- 83. Huk OL, Catelas I, Mwale F, Antoniou J, Zukor DJ & Petit A.** Induction of apoptosis and necrosis by metal ions in vitro. *Journal of Arthroplasty* 2004 **19** 84–87. (<https://doi.org/10.1016/j.arth.2004.09.011>)
- 84. Stea S, Visentin M, Granchi D, Cenni E, Ciapetti G, Sudanese A & Toni A.** Apoptosis in peri-implant tissue. *Biomaterials* 2000 **21** 1393–1398. ([https://doi.org/10.1016/s0142-9612\(00\)00041-7](https://doi.org/10.1016/s0142-9612(00)00041-7))
- 85. Athanasou NA.** The pathobiology and pathology of aseptic implant failure. *Bone and Joint Research* 2016 **5** 162–168. (<https://doi.org/10.1302/2046-3758.55.BJR-2016-0086>)
- 86. Mahendra G, Pandit H, Kliskey K, Murray D, Gill HS & Athanasou N.** Necrotic and inflammatory changes in metal-on-metal resurfacing hip arthroplasties. *Acta Orthopaedica* 2009 **80** 653–659. (<https://doi.org/10.3109/17453670903473016>)
- 87. Wang Y & Dai S.** Structural basis of metal hypersensitivity. *Immunologic Research* 2013 **55** 83–90. (<https://doi.org/10.1007/s12026-012-8351-1>)
- 88. Saito M, Arakaki R, Yamada A, Tsunematsu T, Kudo Y & Ishimaru N.** Molecular mechanisms of nickel allergy. *International Journal of Molecular Sciences* 2016 **17** 202. (<https://doi.org/10.3390/ijms17020202>)
- 89. Zhang Y & Wilcox DE.** Thermodynamic and spectroscopic study of Cu (II) and Ni (II) binding to bovine serum albumin. *Journal of Biological Inorganic Chemistry* 2002 **7** 327–337. (<https://doi.org/10.1007/s00775-001-0302-6>)
- 90. Thierse HJ, Moulon C, Allespach Y, Zimmermann B, Doetze A, Kuppig S, Wild D, Herberg F & Weltzien HU.** Metal-protein complex-mediated transport and delivery of Ni<sup>2+</sup> to TCR/MHC contact sites in nickel-specific human T Cell activation. *Journal of Immunology* 2004 **172** 1926–1934. (<https://doi.org/10.4049/jimmunol.172.3.1926>)
- 91. Bal W, Sokołowska M, Kurowska E & Faller P.** Binding of transition metal ions to albumin: sites, affinities and rates. *Biochimica et Biophysica Acta* 2013 **1830** 5444–5455. (<https://doi.org/10.1016/j.bbagen.2013.06.018>)
- 92. Gispert MP, Serro AP, Colaço R & Saramago B.** Friction and wear mechanisms in hip prosthesis: comparison of joint materials behaviour in several lubricants. *Wear* 2006 **260** 149–158. (<https://doi.org/10.1016/j.wear.2004.12.040>)
- 93. Saikko V.** Effect of lubricant protein concentration on the wear of ultra-high molecular weight polyethylene sliding against a CoCr counterface. *Journal of Tribology* 2003 **125** 638–642. (<https://doi.org/10.1115/1.1537751>)
- 94. Ghosh S, Choudhury D, Das NS & Pinguhan-Murphy B.** Tribological role of synovial fluid compositions on artificial joints—a systematic review of the last 10 years. *Lubrication Science* 2014 **26** 387–410. (<https://doi.org/10.1002/lis.1266>)
- 95. Nandedkar AK, Hong MS & Friedberg F.** Co<sup>2+</sup> binding by plasma albumin. *Biochemical Medicine* 1974 **9** 177–183. ([https://doi.org/10.1016/0006-2944\(74\)90050-7](https://doi.org/10.1016/0006-2944(74)90050-7))
- 96. Bar-Or D, Lau E, Rao N, Bampos N, Winkler J & Curtis C.** Reduction in the cobalt binding capacity of human albumin with myocardial ischemia. *Annals of Emergency Medicine* 1999 **34**(Supplement56). ([https://doi.org/10.1016/S0196-0644\(99\)80299-6](https://doi.org/10.1016/S0196-0644(99)80299-6))
- 97. Bar-Or D, Lau E & Winkler JV.** A novel assay for cobalt-albumin binding and its potential as a marker for myocardial ischemia—a preliminary report. *Journal of Emergency Medicine* 2000 **19** 311–315. ([https://doi.org/10.1016/s0736-4679\(00\)00255-9](https://doi.org/10.1016/s0736-4679(00)00255-9))
- 98. Bar-Or D, Curtis G, Rao N, Bampos N & Lau E.** Characterization of the Co<sup>2+</sup> and Ni<sup>2+</sup> binding amino-acid residues of the N-terminus of human albumin. An insight into the mechanism of a new assay for myocardial ischemia. *European Journal of Biochemistry* 2001 **268** 42–47. (<https://doi.org/10.1046/j.1432-1327.2001.01846.x>)
- 99. Mothes E & Faller P.** Evidence that the principal Co(II)-binding site in human serum albumin is not at the N-terminus: implication on the albumin cobalt binding test for detecting myocardial ischemia. *Biochemistry* 2007 **46** 2267–2274. (<https://doi.org/10.1021/bi061783p>)
- 100. Sokołowska M, Wszelaka-Rylik M, Poznański J & Bal W.** Spectroscopic and thermodynamic determination of three distinct binding sites for Co(II) ions in human serum albumin. *Journal of Inorganic Biochemistry* 2009 **103** 1005–1013. (<https://doi.org/10.1016/j.jinorgbio.2009.04.011>)
- 101. Lachiewicz PF, Watters TS & Jacobs JJ.** Metal hypersensitivity and total knee arthroplasty. *Journal of the American Academy of Orthopaedic Surgeons* 2016 **24** 106–112. (<https://doi.org/10.5435/JAAOS-D-14-00290>)
- 102.** US Food and Drug Administration. Information for orthopaedic surgeons: general recommendations for orthopaedic surgeons before Metal-on-Metal hip resurfacing surgery 2019. Available at: <https://www.fda.gov/medical-devices/metal-metal-hip-implants/information-orthopaedic-surgeons> (Accessed on 20 January 2022).
- 103.** Medicines and Healthcare products Regulatory Agency (MHRA). All metal-on-metal (MoM) hip replacements: updated advice for follow-up of patients (MDA/2017/018). *MHRA* 2017. Available at: [https://assets.publishing.service.gov.uk/media/5954ca1ded915d0ba00009b/MDA-2017-018\\_Final.pdf](https://assets.publishing.service.gov.uk/media/5954ca1ded915d0ba00009b/MDA-2017-018_Final.pdf) (Accessed on 20 January 2022).
- 104. Hannemann F, Hartmann A, Schmitt J, Lütznier J, Seidler A, Campbell P, Delaunay CP, Drexler H, Ettema HB, García-Cimbrelo E, et al.** European multidisciplinary consensus statement on the use and monitoring of metal-on-metal bearings for total hip replacement and hip resurfacing. *Orthopaedics and Traumatology, Surgery and Research* 2013 **99** 263–271. (<https://doi.org/10.1016/j.otsr.2013.01.005>)
- 105. Pozzuoli A, Berizzi A, Crimi A, Belluzzi E, Frigo AC, Conti GD, Nicolli A, Trevisan A, Biz C & Ruggieri P.** Metal Ion Release, Clinical and radiological outcomes in large diameter metal-on-metal total hip arthroplasty at long-term follow-up. *Diagnostics (Basel)* 2020 **10** 941. (<https://doi.org/10.3390/diagnostics10110941>)
- 106. Civinini R, Cozzi Lepri A, Carulli C, Matassi F, Villano M & Innocenti M.** Patients following revision total hip arthroplasty with modular dual mobility components and cobalt-chromium inner metal head are at risk of increased serum metal ion levels. *Journal of Arthroplasty* 2020 **35** S294–S298. (<https://doi.org/10.1016/j.arth.2020.02.050>)
- 107. Kim CH, Ryu JJ, Jeong MY, Kim JW, Chang JS & Yoon PW.** Serum metal ion levels in cementless metal-on-metal total hip arthroplasty: long-term follow-up trends. *Journal of Arthroplasty* 2019 **34** 534–537. (<https://doi.org/10.1016/j.arth.2018.11.023>)
- 108. Lehtovirta L, Reito A, Parkkinen J, Peräniemi S, Vepsäläinen J & Eskelinen A.** Association between periprosthetic tissue metal content, whole blood and synovial fluid metal ion levels and histopathological findings in patients with failed metal-on-metal hip replacement. *PLoS One* 2018 **13** e0197614. (<https://doi.org/10.1371/journal.pone.0197614>)
- 109. Ahmed SS, Bawale R, Jain S & Samsani S.** Metal ion levels comparison: metal-on-metal hip resurfacing vs total hip arthroplasty in patients requiring revision surgery. *Journal of Orthopaedics* 2018 **15** 1013–1016. (<https://doi.org/10.1016/j.jor.2018.09.002>)

- 110. Ando W, Yasui H, Yamamoto K, Oinuma K, Tokunaga H, Inaba Y, Kobayashi N, Aihara M, Nakanishi R & Ohzono K.** A comparison of the effect of large and small metal-on-metal bearings in total hip arthroplasty on metal ion levels and the incidence of pseudotumour: a five-year follow-up of a previous report. *Bone and Joint Journal* 2018 **100-B** 1018–1024. (<https://doi.org/10.1302/0301-620X.100B8.BJJ-2018-0414.R1>)
- 111. Lons A, Putman S, Pasquier G, Migaud H, Drumez E & Girard J.** Metallic ion release after knee prosthesis implantation: a prospective study. *International Orthopaedics* 2018 **41** 2503–2508. (<https://doi.org/10.1007/s00264-017-3528-9>)
- 112. Lützner J, Hartmann A, Dinnebier G, Spornraft-Ragaller P, Hamann C & Kirschner S.** Metal hypersensitivity and metal ion levels in patients with coated or uncoated total knee arthroplasty: a randomised controlled study. *International Orthopaedics* 2013 **37** 1925–1931. (<https://doi.org/10.1007/s00264-013-2010-6>)
- 113. Savarino L, Tigani D, Greco M, Baldini N & Giunti A.** The potential role of metal ion release as a marker of loosening in patients with total knee replacement: a cohort study. *Journal of Bone and Joint Surgery, British Volume* 2010 **92** 634–638. (<https://doi.org/10.1302/0301-620X.92B5.23452>)
- 114. Reiner T, Sorbi R, Müller M, Nees T, Kretzer JP, Rickert M & Moradi B.** Blood metal ion release after primary total knee arthroplasty: a prospective study. *Orthopaedic Surgery* 2020 **12** 396–403. (<https://doi.org/10.1111/os.12591>)
- 115. Luetzner J, Krummenauer F, Lengel AM, Ziegler J & Witzleb WC.** Serum metal ion exposure after total knee arthroplasty. *Clinical Orthopaedics and Related Research* 2007 **461** 136–142. (<https://doi.org/10.1097/BLO.0b013e31806450ef>)
- 116. Garrett S, Jacobs N, Yates P, Smith A & Wood D.** Differences in metal ion release following cobalt-chromium and oxidized zirconium total knee arthroplasty. *Acta Orthopaedica Belgica* 2010 **76** 513–520.
- 117. Masoumiganjgah A, Ginsel B, Whitehouse SL, Vijaysegaran P, English H & Crawford RW.** Metal ion levels post primary unilateral total knee arthroplasty. *Australasian Medical Journal* 2019 **12** 206–213. (<https://doi.org/10.35841/1836-1935.12.7.206-213>)
- 118. Gupta R, Phan D & Schwarzkopf R.** Total knee arthroplasty failure induced by metal hypersensitivity. *American Journal of Case Reports* 2015 **16** 542–547. (<https://doi.org/10.12659/AJCR.893609>)
- 119. Ho J, Mahajan J, Taylor M, Byers A, Arauz P & Kwon YM.** Metallosis in cemented titanium alloy total knee arthroplasty without apparent metal-on-metal articulation. *Knee* 2018 **25** 728–731. (<https://doi.org/10.1016/j.knee.2018.04.013>)
- 120. Kenny F, Gibbons JP, Keogh P & O'Byrne J.** Revision of total knee replacement (TKR) secondary to raised cobalt levels: should this be considered in the painful TKR patient? *BMJ Case Reports* 2021 **14** e240674. (<https://doi.org/10.1136/bcr-2020-240674>)
- 121. Liu TK, Liu SH, Chang CH & Yang RS.** Concentration of metal elements in the blood and urine in the patients with cementless total knee arthroplasty. *Tohoku Journal of Experimental Medicine* 1998 **185** 253–262. (<https://doi.org/10.1620/tjem.185.253>)
- 122. Reiner T, Bader N, Panzram B, Bühlhoff M, Omlor G, Kretzer JP, Raiss P & Zeifang F.** In vivo blood metal ion levels in patients after total shoulder arthroplasty. *Journal of Shoulder and Elbow Surgery* 2019 **28** 539–546. (<https://doi.org/10.1016/j.jse.2018.08.027>)
- 123. Pareek A, Nguyen NTV, Morrey ME & Sanchez-Sotelo J, Eds.** Primary reverse shoulder arthroplasty did not result in increased blood metal ion levels regardless of glenosphere size: a randomized controlled trial. *Seminars in Arthroplasty* 2020 **30** 63–72. (<https://doi.org/10.1053/j.sart.2020.05.003>)