

# Synthesis and X-ray Structures of New Phosphorus-Selenium Heterocycles with an E-P(Se)-E' (E, E' = N, S, Se) Linkage

Guoxiong Hua, Amy L. Fuller, Yang Li, Alexandra M. Z. Slawin and J. Derek Woollins\*

School of Chemistry, University of St Andrews, Fife, KY16 9ST, UK

\*Corresponding author. Tel.: (+44)-1334-463384; email: [jdw3@st-and.ac.uk](mailto:jdw3@st-and.ac.uk)

---

Refluxing a toluene solution of Woollins' reagent, **WR**, with difunctional aromatic substrates (aryldiamines and aryldithiols) leads to a series of novel five- to seven-membered heterocycles **2a-e**, **4a**, **4b** and **6a-c** with an E-P(Se)-E' (E, E' = N, S, Se) linkage in 7-98% isolated yields. This method offers a new approach to the library of phosphorus-selenium heterocyclic compounds. All new compounds have been characterized by IR, <sup>1</sup>H, <sup>13</sup>C, <sup>31</sup>P, <sup>77</sup>Se NMR, mass spectrometry and elemental analysis or accurate mass measurement. Four representative X-ray structures are reported.

*Key words: Woollins' reagent; Aryldiamine; Aryldithiole; Phosphorus-selenium heterocycle; X-ray structure.*

---

## Introduction

Following the discovery of seleno-enzymes, selenium-containing compounds have been studied extensively because of their interesting reactivity profile<sup>1</sup> and potential pharmaceutical significance.<sup>2</sup> For example, there has been considerable interest in organoselenium compounds as reagents or intermediates in synthetic chemistry,<sup>3</sup> as heavy atom versions of oligonucleotides and proteins for crystallographic studies,<sup>4-6</sup> as human metabolites,<sup>7</sup> as cancer-preventative agents<sup>6,7</sup> and as substrates for biomimetic studies.<sup>10-12</sup> Typical selenium reagents used for the preparation of organoselenium systems include SeO<sub>2</sub>, PhSeO<sub>2</sub>H, PhSeCl, PhSe<sup>-</sup>,<sup>1b,13,14</sup> selenoethers and phosphine selenides.<sup>15</sup> However, the synthesis of selenium-containing organic heterocycles can be problematic due to the use of these toxic selenium reagents which are often difficult to handle. In recent years, 2,4-bis(phenyl)-1,3-diselenadiphosphetane-2,4-diselenide [PhP(Se)(μ-Se)]<sub>2</sub>, which has been known as Woollins' reagent, **WR**, has received increasing attention due to its less unpleasant chemical properties and relatively easy preparation, as well as ease of handling.<sup>16</sup> Now it is becoming a very useful selenium source in synthetic chemistry.<sup>17</sup>

As part of our studies into the reactivity of **WR** towards different organic substrates, we have recently reported the facile synthesis of eight- to ten-membered macrocyclic diselenides bearing a P-Se-Se-P linkage.<sup>18</sup> Herein, we described the preparation of a series of novel five- to seven-membered phosphorus-selenium

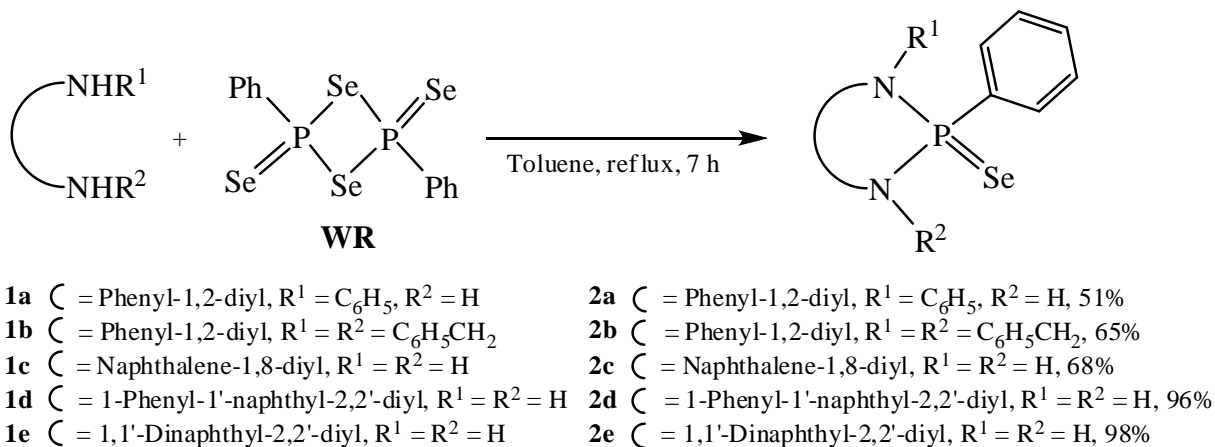
heterocycles *via* the selenation of a variety of difunctional nucleophilic substrates (aryldiamines, aryldithiol, aminoarylthiol) and their derivatives by **WR**. Four representative X-ray crystal structures are reported.

## Results and Discussion

### Synthesis of monophosphorus-selenium heterocycles of **2a-e**, **4a**, **4b** and **6a-c**

The reaction between **WR** and two molar equivalents of **1a** or **1b** proceeded with the rupture of the  $P_2(\mu-Se)_2$  ring to give the five-membered monophosphorus species  $C_6H_5P(Se)(NR^1C_6H_4NR^2-1,2)$  **2a** ( $R^1 = C_6H_5$ ;  $R^2 = H$ ) and **2b** ( $R^1 = R^2 = C_6H_5CH_2$ ) in 51% and 65% yield, respectively (Scheme 1). The difference in yields of diazaphosphepines suggests that the more substituted the amine, the easier for the completion of its cyclization with **WR**. This can not be simply explained by the nucleophilic property of the nitrogen, as the  $C_6H_5CH_2$  group makes the nitrogen atom of the amine more nucleophilic, but, the  $C_6H_5$  group has the opposite effect.

Refluxing a toluene solution of **WR** with two molar equivalents of 1,8-diaminonaphthalene (**1c**), 1-(2-aminophenyl)naphthalene-2-amine (**1d**), or 1,1'-binaphthyl-2,2'-diamine (**1e**) led to the corresponding six-/seven-membered monophosphorus species **2c**, **2d** and **2e** in good yields (68% for **2c**, 96% for **2d**, and 98% for **2e**) (Scheme 1). In addition to the increasing hyperconjugation effect of the aromatic rings, the reduced strain in the six- or seven-membered ring may contribute to the stability and therefore the yield of the product.

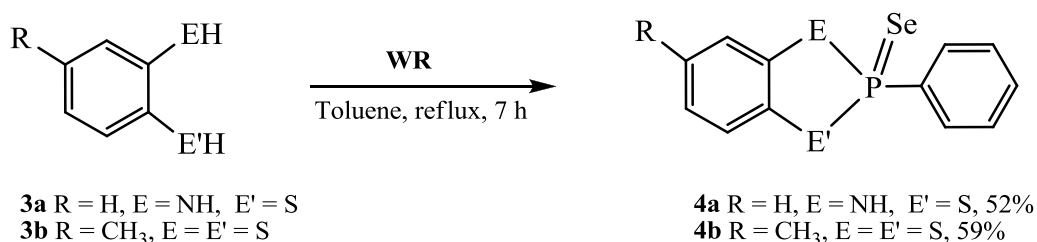


Scheme 1. Synthesis of five to seven-membered N-P(Se)-N heterocycles **2a-e**

**2a-e** were obtained as white or off-white solids, which turned pink in air over several months due to slow decomposition in aerobic conditions. These compounds are soluble in both dichloromethane and chloroform. All compounds showed the anticipated  $[M+H]^+$  or  $[M+Na]^+$  peak in their mass spectra. The elemental microanalyses or accurate mass measurements for all of the compounds were satisfactory. In the  $^{31}P$  NMR

spectra of **2a-c** and **2e**, the coupling constants are in the region of 810 - 842 Hz ( $J(\text{P}, \text{Se}_{\text{exo}})$ ), which are considerably lower than those in the non-substituted  $\text{PhP}(\text{Se})(\text{NHC}_6\text{H}_4\text{NH-1,2})$  ( $J(\text{P}, \text{Se}_{\text{exo}}) = 895$  Hz).<sup>19</sup> There is a progressive shift to low frequency in  $\delta_{\text{P}}$  in the range of 84.7 - 40.5 ppm. The lowest case is **2c** due to the six-membered ring present. The  $^{77}\text{Se}$  NMR spectra of **2a-c**, **2e** consist of a set of doublet ( $\delta_{\text{Se}} = -115.7$  ppm ( $J(\text{P}, \text{Se}_{\text{exo}}) = 842$  Hz) for **2a**,  $-188.7$  ppm ( $J(\text{P}, \text{Se}_{\text{exo}}) = 842$  Hz) for **2b**,  $-182.1$  ppm ( $J(\text{P}, \text{Se}_{\text{exo}}) = 820$  Hz) for **2c** and  $-193.5$  ppm ( $J(\text{P}, \text{Se}_{\text{exo}}) = 810$  Hz) for **2e**. The NMR spectra of **2d** reveal a mixture of two diastereoisomers with similar  $^{31}\text{P}$  and  $^{77}\text{Se}$  NMR spectra patterns. In the IR spectra of **2** the  $\nu(\text{P}=\text{Se})$  vibration was observed in the region  $607 - 562$   $\text{cm}^{-1}$ .

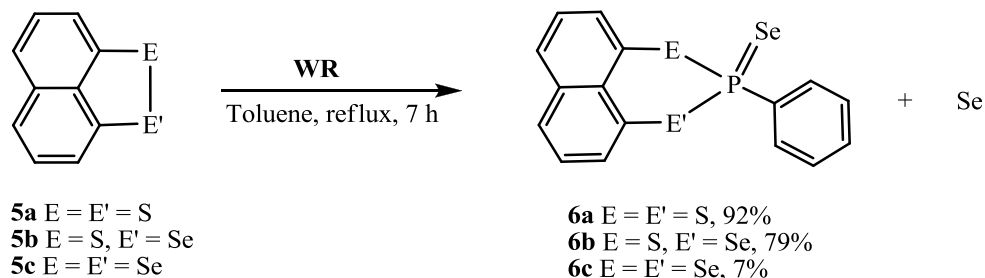
The two five-membered P-Se heterocyclic compounds **4a** and **4b** were prepared by the reaction of **WR** with one molar quantity of 4-methylbenzene-1,2-dithiol (**3a**) or 2-aminobenzenethiol (**3b**) in refluxing toluene (Scheme 2). **4a** was obtained as a white solid, while **4b**, a greenish paste. Both are air stable and soluble in dichloromethane and chloroform. The  $^{31}\text{P}$  NMR spectra contain sharp singlets at  $\delta = 74.4$  and  $71.3$  ppm, with coupling constants  $J(\text{P}, \text{Se}) = 840$  and  $836$  Hz, respectively. The  $^1\text{H}$  and  $^{13}\text{C}$  NMR spectra confirm the presence of the aromatic substituents on the phosphorus centre, the benzyl groups being readily observed in the  $^1\text{H}$  and  $^{13}\text{C}$  NMR spectra. The IR spectra of **4a** and **4b** showed similar patterns except for the presence of the  $\text{CH}_3$  absorption peak in **4b**. In all cases the expected  $\text{M}^+$  ions are found in their mass spectra.



Scheme 2. Synthesis of five-membered S/NH-P(Se)-S heterocycles **4a** and **4b**

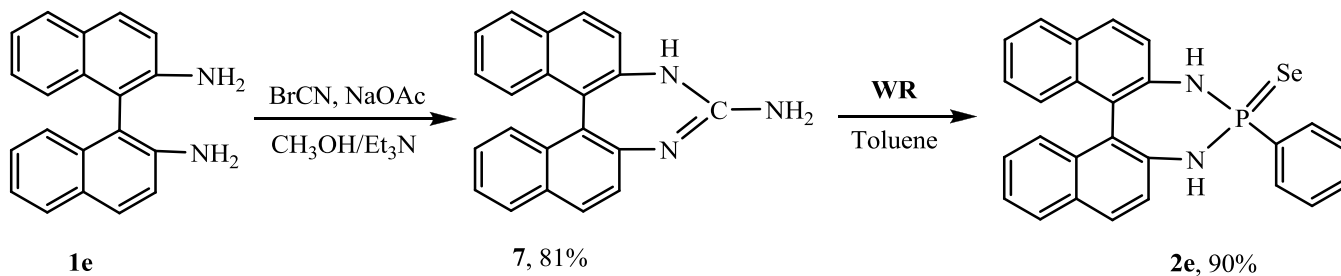
Reacting **WR** with two molar equivalents of naphtho[1,8-*c,d*][1,2]dithiole (**5a**), naphtho[1,8-*cd*][1,2]thioselenole **5b** or naphtho[1,8-*cd*][1,2]selenole (**5c**) in refluxing toluene (Scheme 3) leads to the formation of **6a-c**. The isolated yields range from 7% for **6c** to 92% for **6a**, indicating that the reactive order with **WR** is naphtho[1,8-*cd*][1,2]dithiole (**5a**) > naphtho[1,8-*cd*][1,2]selenole (**5c**) » naphtho[1,8-*cd*][1,2]thioselenole (**5b**). **6a-c** were obtained as white or yellow or brown solids which turned pink in air over several months due to slow decomposition in aerobic conditions. All compounds showed the anticipated  $[\text{M}]^+$  or  $[\text{M}+\text{H}]^+$  peak in their EI or CI mass spectra. The elemental microanalyses or accurate mass measurements for all compounds were satisfactory. The  $^{31}\text{P}$  NMR spectrum of **6a** comprises a singlet at 21.7 ppm, flanked by selenium satellite  $J(\text{P}, \text{Se}_{\text{exo}}) = 810$  Hz, these values are similar to those in **2a-e**. However, the  $^{31}\text{P}$  NMR spectra of **6b** and **6c** display sharp singlets at 3.7 and 76.6 ppm respectively, accompanied by two sets of

selenium satellites (798 and 390 Hz for **6b**, and 819 and 439 Hz for **6c**), indicating that there is a P-Se single bond and a P=Se double bond present in these two compounds. This is further substantiated by the  $^{77}\text{Se}$  NMR spectrum, which shows two doublets at 502.6 and -50.9 ppm for **6b**, and 386.9 and -26.0 ppm for **6c** with coupling constants of  $J(\text{P,Se})$  799 and 390 Hz for **6b**, and 820 and 441 Hz for **6c**.



Scheme 3. Synthesis of six-membered E-P(Se)-E (E, E' = S, Se) heterocycles **6a-c**

It is known that the S-S and S-Se bonds are fairly weak. It is not surprising that **WR** reacts with **5a-c** to give the E-P(Se)-E heterocycles **6a-c**. However, splitting the guanidine group, especially a cyclic guanidine, derived from diamine and cyanogen bromide in dry methanol in the presence of anhydrous sodium acetate, is rather difficult. We found that **WR** broke the ring of the cyclic guanidine *3H*-dinaphtho[2,1-*d*:1',2'-*f*][1,3]diazepin-4-amine (**7**), and gave **2e** in excellent yield (90%) (Scheme 4). The result suggests that **WR** is a powerful phosphorus-selenation reagent.



Scheme 4. Synthesis of **2e** via the reaction of *3H*-dinaphtho[2,1-*d*:1'2'-*f*][1,3]diazepin-4-amine (**7**) with **WR**

### X-ray crystal structures of **2a**, **2b**, **4b** and **6a**

The molecular structures of **2a**, **2b** were established by X-ray diffraction and are depicted in Figures 1 and 2. Their crystallographic data are reported in Table 1. The X-ray structure of **2a** reveals an intermolecular hydrogen bonding interaction between the exocyclic selenium atom and the H atom of the amine nitrogen leading to a dimer pair (Figure 1). Within the hydrogen bonded dimers the  $\text{Se}(1)\cdots\text{H}(5\text{N})$  distance of 2.68(4) Å with  $\text{N}(5)\text{-H}(5\text{N})\cdots\text{Se}(1)$  angle of  $160(3)^\circ$  is similar to that in the dimer pairs in the solid state structure of

NH(Ph<sub>2</sub>PSe)<sub>2</sub>.<sup>20</sup> For compound **2b**, it can be seen from Figure 2 that the molecule has approximate non-crystallographic mirror symmetry. For the structures of **2a** and **2b**, the five-membered rings (P-N-C-C-N) are essentially planar. The P=Se distances, 2.0927(10) Å for **2c**, 2.0804(16) Å for **2b** are normal,<sup>21-24</sup> while the shortness of the P-N bond lengths (1.662(3), 1.690(3) Å for **2a**, 1.684(4), 1.678(5) Å for **2b**) suggests some multiple bond character. The X-ray structures of **2c** and **2e** whilst allowing confirmation of connectivity could not be refined well because of disorder issues and will not be discussed in detail.

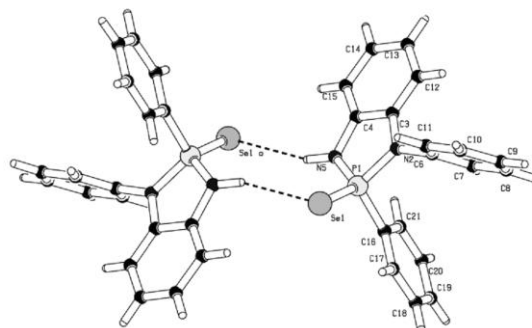


Figure 1. The X-ray structure of **2a** illustrating the dimer pair H bonding. The additional "a" letter in the Se1a label indicates that this atom is at (1-x, 1-y, 2-z). Selected bond lengths (Å) and angles (°) (esds in parentheses): Se(1)-P(1) 2.0927(10), P(1)-N(5) 1.662(3), P(1)-N(2) 1.690(3), P(1)-C(16) 1.801(4), N(2)-C(3) 1.400(4), N(5)-P(1)-N(2) 92.31(15), N(5)-P(1)-C(16) 107.79(16), N(2)-P(1)-C(16) 105.72(15), N(5)-P(1)-Se(1) 118.57(11), N(2)-P(1)-Se(1) 117.44(10), C(16)-P(1)-Se(1) 112.70(12), C(3)-N(2)-P(1) 112.2(2), C(4)-N(5)-P(1) 113.1(2).

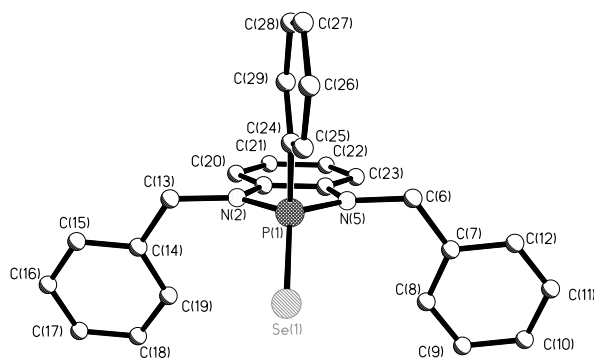


Figure 2. The X-ray structure of **2b** (Hydrogen atoms omitted for clarity). Selected bond lengths (Å) and angles (°) (esds in parentheses): Se(1)-P(1) 2.0804(16), P(1)-N(5) 1.684(4), P(1)-N(2) 1.678(5), P(1)-C(24) 1.806(6), N(2)-C(3) 1.416(6), N(2)-P(1)-N(5) 91.2(2), N(2)-P(1)-C(24) 107.2(2), N(5)-P(1)-C(24) 106.2(2), N(2)-P(1)-Se(1) 118.20(16), N(5)-P(1)-Se(1) 117.75(16), C(24)-P(1)-Se(1) 113.65(18), C(3)-N(2)-P(1) 113.5(3), C(13)-N(2)-P(1) 123.1(3).

The molecular structures of **4b** and **6a** (Figures 3 and 4, Table 1) reveal a somewhat different structural motif. **4b** has a similar conformation to **2a** for the P(Se)SNC<sub>2</sub> heterocycle. The six membered P(Se)S<sub>2</sub>C<sub>3</sub> ring in **6a** has a chair conformation. The exocyclic P(1)-Se(1) bond lengths in **4b** and **6a** [2.1021(6) and 2.0962(9) Å,

respectively] are in good agreement with each other and are consistent with the related selenides containing  $P^V=Se$  bonds [2.08-2.12 Å].<sup>19,21-24</sup> The internal angle of S(1)-P(1)-S(2) being 102.28(5)° in **6a** shows significant distortion from ideal tetrahedral. We note that the internal angle of N(1)-P(1)-S(1) [94.23(7)°] in **4b** is slightly bigger than the value in the similar structure of **2a** [N(1)-P(1)-N(2) 92.31(15)°]. In **4b** adjacent molecules are linked by N-H...Se Hydrogen bonds (NH(2)...Se(1)\* 2.654(18), N...Se\* 3.5368(19) Å N-H...Se\* 163(2) °), where the \* indicates that the Se atom is at 1+x, y, z to form chain-like packing extending in the a-direction.

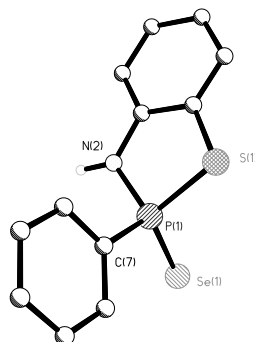


Figure 3. The X-ray structure of **4b** (Hydrogen atoms on phenyl rings omitted for clarity). Selected bond lengths (Å) and angles (°) (esds in parentheses): Se(1)-P(1) 2.1021(6), S(1)-C(1) 1.772(2), S(1)-P(1) 2.1110(8), P(1)-N(2) 1.6671(19), P(1)-C(7) 1.803(2); C(1)-S(1)-P(1) 92.49(7), N(2)-P(1)-C(7) 105.77(10), N(2)-P(1)-Se(1) 117.15(7), C(7)-P(1)-Se(1) 113.71(7), N(2)-P(1)-S(1) 94.23(7), C(7)-P(1)-S(1) 107.81(7), Se(1)-P(1)-S(1) 116.09(3).

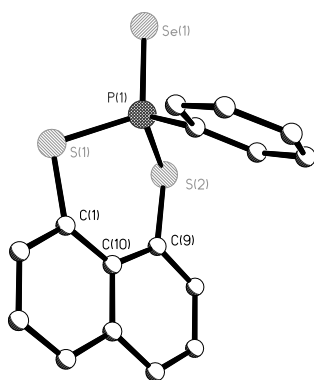


Figure 4. The X-ray structure of **6a** (Hydrogen atoms omitted for clarity). Selected bond lengths (Å) and angles (°) (esds in parentheses): Se(1)-P(1) 2.0962(9), S(1)-P(1) 2.0750(12), S(1)-C(1) 1.793(3), S(2)-P(1) 2.0610(12), S(2)-C(9) 1.786(3), P(1)-C(11) 1.811(3), C(1)-C(10) 1.435(4), C(9)-C(10) 1.437(4); P(1)-S(1)-C(1) 101.04(11), P(1)-S(2)-C(9) 101.58(11), Se(1)-P(1)-S(1) 112.99(4), Se(1)-P(1)-S(2) 110.01(4), Se(1)-P(1)-C(11) 114.75(11), S(1)-P(1)-S(2) 102.28(5), S(1)-P(1)-C(11) 107.41(11), S(2)-P(1)-C(11) 108.60(11).



In conclusion, we have successfully applied Woollins' reagent, **WR**, to the synthesis of a series of novel five- to seven-membered heterocycles with an E-P(Se)-E' (E, E' = N, S, Se) linkage from the selenation of difunctional aromatic substrates. Using  $^1\text{H}$ ,  $^{31}\text{P}\{^1\text{H}\}$ ,  $^{77}\text{Se}\{^1\text{H}\}$  NMR spectroscopy and microanalysis or accurate mass measurements in conjunction with single-crystal X-ray crystallography, the structures of the novel heterocycles have been elucidated.

## Experimental Section

Unless otherwise stated, all reactions were carried out under an oxygen free, nitrogen atmosphere using pre-dried solvents and standard Schlenk techniques. Subsequent chromatographic and work up procedures were performed in air.  $^1\text{H}$  (270 MHz),  $^{13}\text{C}$  (67.9 MHz),  $^{31}\text{P}\{^1\text{H}\}$  (109 MHz) and  $^{77}\text{Se}\{^1\text{H}\}$  (51.4 MHz referenced to external  $\text{Me}_2\text{Se}$ ) NMR spectra were recorded in  $\text{CDCl}_3$  at 25 °C (unless stated otherwise) on a JEOL GSX 270. IR spectra were recorded as KBr pellets in the range of 4000-250  $\text{cm}^{-1}$  on a Perkin-Elmer 2000 FTIR/Raman spectrometer. Microanalysis was performed by the University of St Andrews microanalysis service. Mass spectrometry was performed by the EPSRC National Mass Spectrometry Service Centre, Swansea and the University of St Andrews Mass Spectrometry Service.

### Syntheses

**General procedure for the synthesis of 2a-e:** A mixture of diamine (2.0 mmol) and **WR** (0.54g, 1.0 mmol) in 20  $\text{cm}^3$  of dry toluene was refluxed for 7 h. The red suspension disappeared and a grey solution formed along with a small amount of black elemental selenium. Upon cooling to room temperature and removing the solvent the residue was purified by column chromatography (silica gel, toluene as eluent) to give monophosphorus products **2a-e**.

**2a.** 190 mg as pale white solid in 51% yield. M.p. 188-190 °C. Selected IR (KBr,  $\text{cm}^{-1}$ ): 3259(m, NH), 1590(m), 1485(vs), 1377(m), 1297(m), 1249(s), 1183(m), 1100(s), 1024(m), 970(m), 897(m), 878(m), 738(s), 690(s), 568(s, P=Se).  $^1\text{H}$  NMR ( $\text{CDCl}_3$ ,  $\delta$ ), 7.99-7.90 (m, 2H, ArH), 7.45-7.32 (m, 3H, ArH), 7.30-7.22 (m, 2H, ArH), 7.22-7.18 (m, 2H, ArH), 6.85-6.77 (m, 4H, ArH), 6.50 (d,  $J(\text{P},\text{H}) = 7$  Hz, 2H, ArH), 5.29 (d,  $J(\text{P},\text{H}) = 18$  Hz, 1H, NH) ppm.  $^{13}\text{C}$  NMR ( $\text{CDCl}_3$ ,  $\delta$ ), 133.2, 132.7, 132.0 (d,  $^3J(\text{P},\text{C}) = 14$  Hz), 129.7, 128.7, 128.3 (d,  $J(\text{P},\text{C}) = 14$  Hz), 127.8, 120.8 (d,  $^3J(\text{P},\text{C}) = 11$  Hz), 111.2 (d,  $^4J(\text{P},\text{C}) = 8$  Hz), 110.5 (d,  $^4J(\text{P},\text{C}) = 8$  Hz) ppm.



<sup>31</sup>P NMR (CDCl<sub>3</sub>, δ), 75.5 (s,  $J(\text{P}, \text{Se}_{\text{exo}}) = 842$  Hz) ppm. <sup>77</sup>Se NMR (CDCl<sub>3</sub>, δ), -115.7 (d,  $J(\text{P}, \text{Se}_{\text{exo}}) = 842$  Hz) ppm. MS (CI<sup>+</sup>, m/z): 371 [M+H]<sup>+</sup>. Accurate mass measurement (EIMS): 370.0133, calculated mass for C<sub>18</sub>H<sub>15</sub>N<sub>2</sub>PSe: 370.0133.

**2b.** 306 mg as white solid in 65% yield. M.p. 211-212 °C. Selected IR (KBr, cm<sup>-1</sup>): 3056(w), 3017(w), 2892(w), 2843(w), 1595(m), 1492(vs), 1435(m), 1383(m), 1283(s), 1134(s), 1098(m), 1044(m), 911(m), 864(m), 735(s), 718(m), 688(m), 562(s, P=Se). <sup>1</sup>H NMR (CDCl<sub>3</sub>, δ), 7.83 (dd,  $J(\text{H}, \text{H}) = 7.2$  Hz,  $^3J(\text{P}, \text{H}) = 15.3$  Hz, 2H, ArH), 7.46 (m,  $J(\text{H}, \text{H}) = 7.2$  Hz, 3H, ArH), 7.39-7.7.15 (m, 10H, ArH), 6.69 (dd,  $J(\text{H}, \text{H}) = 7.2$  Hz, 2H, ArH), 6.54 (d,  $J(\text{H}, \text{H}) = 7.2$  Hz, 2H, ArH), 4.68 (d,  $^3J(\text{P}, \text{H}) = 15.8$  Hz, 4H, NCH<sub>2</sub>) ppm. <sup>13</sup>C NMR (CDCl<sub>3</sub>, δ), 136.4 ( $J(\text{P}, \text{C}) = 3.1$  Hz), 136.3 (d,  $J(\text{P}, \text{C}) = 106$  Hz), 135.9, 135.7, 132.7, 132.0 (d,  $^3J(\text{P}, \text{C}) = 14.5$  Hz), 128.5, 128.4, 128.2, 127.4, 127.4, 120.1, 109.4 (d,  $J(\text{P}, \text{C}) = 6.2$  Hz), 46.4 (d,  $^3J(\text{P}, \text{C}) = 7.3$  Hz) ppm. <sup>31</sup>P NMR (CDCl<sub>3</sub>, δ), 84.7 (s,  $J(\text{P}, \text{Se}_{\text{exo}}) = 842$  Hz) ppm. <sup>77</sup>Se NMR (CDCl<sub>3</sub>, δ), -188.7 (d,  $J(\text{P}, \text{Se}_{\text{exo}}) = 842$  Hz) ppm. MS (ES<sup>+</sup>, m/z): 497 [M+Na]<sup>+</sup>. Accurate mass measurement (EIMS): 470.0785, calculated mass for C<sub>26</sub>H<sub>23</sub>N<sub>2</sub>P<sup>76</sup>Se: 470.0786.

**2c.** 250 mg as milky white solid in 67% yield. M.p. 195-197 °C. Selected IR (KBr, cm<sup>-1</sup>): 3248(vs, NH), 1589(vs), 1359(s), 1107(m), 1057(s), 908(s), 809(s), 748(s), 683(s), 607(m, P=Se). <sup>1</sup>H NMR (CDCl<sub>3</sub>, δ), 8.12 (m,  $J(\text{H}, \text{H}) = 7$  Hz, 2H, ArH), 7.65-7.53 (m, 11H, ArH), 7.01 (d,  $J(\text{H}, \text{H}) = 7$  Hz, 2H, ArH), 6.28 (d,  $J(\text{P}, \text{H}) = 13$  Hz, 2H, NH) ppm. <sup>13</sup>C NMR (CDCl<sub>3</sub>, δ), 139.1 (d,  $^1J(\text{P}, \text{C}) = 107$  Hz), 136.2, 135.9 (d,  $^2J(\text{P}, \text{C}) = 52$  Hz), 132.1, 130.6 (d,  $^3J(\text{P}, \text{C}) = 13$  Hz), 128.8 (d,  $^3J(\text{P}, \text{C}) = 15$  Hz), 127.4, 121.5, 111.9 (d,  $^4J(\text{P}, \text{C}) = 7$  Hz) ppm, <sup>31</sup>P NMR (CDCl<sub>3</sub>, δ), 40.5 (s,  $J(\text{P}, \text{Se}_{\text{exo}}) = 817$  Hz) ppm. <sup>77</sup>Se NMR (CDCl<sub>3</sub>, δ), -182.1 (d,  $J(\text{P}, \text{Se}_{\text{exo}}) = 820$  Hz) ppm. MS (CI<sup>+</sup>, m/z): 373 [M+H]<sup>+</sup>. Anal. calcd. for C<sub>18</sub>H<sub>17</sub>N<sub>2</sub>PSe (372.03): C, 58.1; H, 4.6; N, 7.5. Found: C, 58.4; H, 4.7; N, 7.3.

**2d.** 402 mg as white solid in 96% yield. M.p. 201-203 °C. The NMR spectra of <sup>31</sup>P and <sup>77</sup>Se showed that the product is a mixture of two diastereoisomers. Selected IR (KBr, cm<sup>-1</sup>): 3168(s, NH), 1493(m, 1434(s), 1365(s), 1285(m), 1229(m), 1102(s), 753(s), 690(m), 584(m, P=Se). <sup>1</sup>H NMR (CD<sub>2</sub>Cl<sub>2</sub>, δ), 8.00-7.73 (2xm, 10H, ArH), 7.56-7.17 (2xm, 20H, ArH), 6.89 (2xd,  $J(\text{P}, \text{H}) = 8.6$  Hz, 4H, NH) ppm. <sup>13</sup>C NMR (CD<sub>2</sub>Cl<sub>2</sub>, 25°C, δ), 136.2, 133.0, 132.5, 132.1, 131.9, 131.7, 129.5, 129.3, 129.0, 128.7, 128.3, 128.1, 127.9, 127.0, 126.7, 126.5, 126.1, 125.8, 125.5, 125.2, 124.9, 124.5, 124.4 ppm. <sup>31</sup>P NMR (CD<sub>2</sub>Cl<sub>2</sub>, δ), 83.5 (s,  $J(\text{P}, \text{Se}) = 805$  Hz) ppm; 84.5 (s,  $J(\text{P}, \text{Se}) = 805$  Hz) ppm. <sup>77</sup>Se NMR (CD<sub>2</sub>Cl<sub>2</sub>, δ), -207.0 (d,  $J(\text{P}, \text{Se}_{\text{exo}}) = 805$  Hz) ppm; -209.8 (d,  $J(\text{P}, \text{Se}_{\text{exo}}) = 805$  Hz) ppm. Mass spectrum (EI<sup>+</sup>): m/z 420 [M+H]<sup>+</sup>, 217 [M-C<sub>6</sub>H<sub>6</sub>NPSe]<sup>+</sup>. Anal. Calcd. for C<sub>22</sub>H<sub>17</sub>N<sub>2</sub>PSe: C, 63.0; H, 4.1; N, 6.7. Found: C, 63.3; H, 3.8; N, 6.6.

**2e.** 460 mg as slightly pink white solid in 98% yield. M.p. 198-199 °C. Selected IR (KBr,  $\text{cm}^{-1}$ ): 3168 (vs, NH), 1617(m), 1599(m), 1505(s), 1433(s), 1362(s), 1220(m), 1102(m), 956(m), 815(s), 748(vs), 694(m), 574(m, P=Se).  $^1\text{H}$  NMR (Acetone- $\text{d}_6$ ,  $\delta$ ), 8.09 - 6.90 (m, 12H, ArH), 2.05 (s, 2H, NH) ppm.  $^{13}\text{C}$  NMR (Acetone- $\text{d}_6$ ,  $\delta$ ), 144.1, 134.2, 136.1, 129.1, 128.4, 127.8, 127.6, 127.2, 126.6, 126.2, 125.3, 124.7, 123.7, 118.5 ppm.  $^{31}\text{P}$  NMR (Acetone- $\text{d}_6$ ,  $\delta$ ), 82.5 (s,  $J(\text{P}, \text{Se}_{\text{exo}}) = 810$  Hz) ppm.  $^{77}\text{Se}$  NMR (Acetone- $\text{d}_6$ ,  $\delta$ ), -193.5 (d,  $J(\text{P}, \text{Se}_{\text{exo}}) = 810$  Hz). MS ( $\text{CI}^+$ ,  $m/z$ ): 470  $[\text{M}+\text{H}]^+$ . Anal. Calcd. for  $\text{C}_{26}\text{H}_{19}\text{N}_2\text{PSe}$  (469.38): C, 66.5; H, 4.1; N, 6.0. Found: C, 66.1; H, 4.4; N, 6.3.

**4a.** A toluene ( $10 \text{ cm}^{-3}$ ) refluxing mixture of 2-aminobenzenethiol (0.12g, 1.0 mmol) and **WR** (0.54g, 1.0 mmol) was carried out for 7 h. The red suspension disappeared and a black red suspension was formed. The mixture was dried *in vacuo* to remove toluene and the residue was dissolved in dichloromethane. The unique compound **7a** (160 mg, white solid) was obtained after fresh chromatographic purification (silica gel, dichloromethane as eluent) and crystallisation from dichloromethane/hexane in 52% yield. M.p: 160-162 °C. Selected IR (KBr,  $\text{cm}^{-1}$ ): 3211(s), 1579(m), 1470(s), 1454(m), 1438(m), 1368(s), 1293(m), 1260(m), 1096(s), 892(s), 743(vs), 687(m), 555(s), 489(m).  $^1\text{H}$  NMR ( $\text{CD}_2\text{Cl}_2$ ,  $\delta$ ), 8.08-7.98 (m, 2H, ArH), 7.57-7.43 (m, 3H, ArH), 7.23-7.20 (m,  $J(\text{H}, \text{H}) = 8.2$  Hz, 1H, ArH), 7.13-7.06 (m,  $J(\text{H}, \text{H}) = 8.2$  Hz, 1H, ArH), 6.93-6.87 (m,  $J(\text{H}, \text{H}) = 8.2$  Hz, 2H, ArH), 5.68 (d,  $^2J(\text{P}, \text{H}) = 13.5$  Hz, 1H, NH) ppm.  $^{13}\text{C}$  NMR ( $\text{CD}_2\text{Cl}_2$ ,  $\delta$ ), 138.7 (d,  $^1J(\text{P}, \text{C}) = 93.4$  Hz), 132.7 (d,  $^4J(\text{P}, \text{C}) = 3.1$  Hz), 131.2 (d,  $^2J(\text{P}, \text{C}) = 14.5$  Hz), 128.4 (d,  $^2J(\text{P}, \text{C}) = 15.6$  Hz), 126.7, 124.2 (d,  $^3J(\text{P}, \text{C}) = 6.2$  Hz), 121.8, 113.0, 112.9 ppm.  $^{31}\text{P}$  NMR ( $\text{CD}_2\text{Cl}_2$ ,  $\delta$ ), 74.4 (s,  $J(\text{P}, \text{Se}_{\text{exo}}) = 840$  Hz) ppm.  $^{77}\text{Se}$  NMR ( $\text{CD}_2\text{Cl}_2$ ,  $\delta$ ), -32.5 (d,  $J(\text{P}, \text{Se}_{\text{exo}}) = 842$  Hz) ppm. Mass spectrum ( $\text{EI}^+$ ):  $m/z$  311  $[\text{M}]^+$ , 231  $[\text{M}-\text{Se}]^+$ , 154  $[\text{M}-\text{C}_6\text{H}_5\text{Se}]^+$ . Anal. Calcd. for  $\text{C}_{12}\text{H}_{10}\text{NPSSe}$ : C, 46.5; H, 3.3; N, 4.5. Found: C, 46.7; H, 3.1; N, 4.7.

**4b.** A mixture of 4-methyl-1,2-benzenedithiol (66.0 mg, 0.5 mmol) and **WR** (270 mg, 0.5 mmol) in toluene ( $20 \text{ cm}^{-3}$ ) was refluxed for 7 h. The red suspension disappeared and a reddish yellow solution was formed. Upon cooling to RT, the mixture was dried *in vacuo*. The residue was dissolved in dichloromethane and was purified by column chromatography (silica gel, dichloromethane as eluent) to afford compound **7b** (100 mg) as greenish yellow paste in 59% yield. M.p: 150-151 °C. Selected IR (KBr,  $\text{cm}^{-1}$ ): 3215(m), 2935(m), 1576(m), 1472(s), 1439(m), 1366(s), 1294(m), 1096(s), 895(s), 742(vs), 685(m), 554(s), 490(m).  $^1\text{H}$  NMR ( $\text{CD}_2\text{Cl}_2$ ,  $\delta$ ), 8.20-8.10 (m, 2H, ArH), 7.54-7.43 (m, 3H, ArH), 7.27-7.20 (m, 2H, ArH), 7.02-6.99 (m, 1H, ArH), 2.29 (s, 3H,  $\text{CH}_3$ ).  $^{13}\text{C}$  NMR ( $\text{CD}_2\text{Cl}_2$ ,  $\delta$ ), 138.2, 136.7, 135.8, 135.6, 133.0, 132.9, 131.0 (d,  $^2J(\text{P}, \text{C}) = 13.5$  Hz), 128.7, 128.6, 128.5, 126.2 (d,  $^3J(\text{P}, \text{C}) = 8.3$  Hz), 125.4 (d,  $^3J(\text{P}, \text{C}) = 8.3$  Hz), 20.9 ppm.  $^{31}\text{P}$  NMR ( $\text{CD}_2\text{Cl}_2$ ,  $\delta$ ), 71.3 (s,  $J(\text{P}, \text{Se}_{\text{exo}}) = 836$  Hz) ppm.  $^{77}\text{Se}$  NMR ( $\text{CD}_2\text{Cl}_2$ ,  $\delta$ ), -34.6 (d,  $J(\text{P}, \text{Se}_{\text{exo}}) = 835$  Hz) ppm.

Mass spectrum (EI<sup>+</sup>): m/z 342 [M]<sup>+</sup>, 294 [M-Se]<sup>+</sup>. Anal. Calcd. for C<sub>13</sub>H<sub>11</sub>PS<sub>2</sub>Se: C, 45.8; H, 3.3. Found: C, 46.0; H, 3.5.

**General procedure for the synthesis of 6a-c:** A mixture of naphtho[1,8-cd][1,2]dithiole, naphtho[1,8-cd][1,2]selenole, or naphtho[1,8-cd][1,2]thioselenole (2.0 mmol) and **WR** (0.54 g, 1.0 mmol) in 20 cm<sup>3</sup> of dry toluene was stirred at room temperature for 7 h, the red suspension stayed unchanged. Then the mixture was refluxed for 7 h. The red suspension disappeared and a solution with some black selenium precipitate formed. Upon cooling to room temperature and removing the solvent, the residue was purified by column chromatography (silica gel, toluene as eluent) to give compounds **6a-c**.

**6a.** 348 mg as white solid in 92% yield. M.p: 154-155 °C. Selected IR (KBr, cm<sup>-1</sup>): 1545(m), 1477(w), 1432(m), 1330(w), 1198(w), 1154(w), 1093(s), 813(s), 749(s), 576(s), 566(s, P=Se). <sup>1</sup>H NMR (CD<sub>2</sub>Cl<sub>2</sub>, δ), 7.88 (dd, *J*(P,H) = 16.5 Hz, *J*(H,H) = 7.4 Hz, 2H, ArH), 7.70 (d, *J*(H,H) = 7.4 Hz, 1H, ArH), 7.60(dd, *J*(H,H) = 7.4 Hz, 2H, ArH), 7.43 (d, *J*(H,H) = 8.0 Hz, 2H, ArH), 7.32(m, 2H, ArH) ppm. <sup>13</sup>C NMR (CD<sub>2</sub>Cl<sub>2</sub>, δ), 135.9, 134.9(d, *J*(P,C) = 73 Hz), 132.5 (d, *J*(P,C) = 3.1 Hz), 131.0 (d, *J*(P,C) = 7.3 Hz), 130.6, 130.5, 13.4, 128.9 (d, *J*(P,C) = 14.5 Hz), 126.3 ppm. <sup>31</sup>P NMR (CD<sub>2</sub>Cl<sub>2</sub>, δ), 21.7 (s, *J*(P,Se<sub>exo</sub>) = 810 Hz) ppm. <sup>77</sup>Se NMR (CD<sub>2</sub>Cl<sub>2</sub>, δ), -81.2 (d, *J*(P,Se<sub>exo</sub>) = 810 Hz) ppm. Mass spectrum (EI<sup>+</sup>): m/z 378 [M]<sup>+</sup>, 298 [M-Se]<sup>+</sup>, 190 [M-C<sub>6</sub>H<sub>5</sub>PSe]<sup>+</sup>. Mass spectrum (CI<sup>+</sup>): 379 [M+H]<sup>+</sup>. Anal. Calcd. for C<sub>16</sub>H<sub>11</sub>PS<sub>2</sub>Se: C, 50.9; H, 2.9. Found: C, 50.4; H, 2.8.

**6b.** 335 mg as pale brown solid in 79% yield. M.p: 130-131 °C. Selected IR (KBr, cm<sup>-1</sup>): 1543(w), 1431(w), 1151(w), 1090(m), 811(m), 748(s), 686(m), 568(vs, P=Se), 548(P-Se). <sup>1</sup>H NMR (CD<sub>2</sub>Cl<sub>2</sub>, δ), 7.94-7.7.60 (m, 6H, ArH), 7.41-7.33 (m, 5H, ArH) ppm. <sup>13</sup>C NMR (CD<sub>2</sub>Cl<sub>2</sub>, δ), 136.1 (d, *J*(P,C) = 63.4 Hz), 132.5, 132.4, 132.3, 131.9 (d, *J*(P,C) = 7.3 Hz), 131.4, 130.8, 130.7, 130.5128.8 (d, *J*(P,C) = 14.5 Hz), 126.4, 126.1 ppm. <sup>31</sup>P NMR (CD<sub>2</sub>Cl<sub>2</sub>, δ), 3.7 (s, *J*(P,Se<sub>exo</sub>) = 798 Hz, *J*(P,Se<sub>endo</sub>) = 390 Hz) ppm. <sup>77</sup>Se NMR (CD<sub>2</sub>Cl<sub>2</sub>, δ), 502.6 (d, *J*(P,Se<sub>endo</sub>) = 390 Hz), -50.9 (d, *J*(P,Se<sub>exo</sub>) = 799 Hz) ppm. Mass spectrum (EI<sup>+</sup>): m/z 424 [M]<sup>+</sup>, 237 [M-C<sub>6</sub>H<sub>5</sub>PSe]<sup>+</sup>. Anal. Calcd. for C<sub>16</sub>H<sub>11</sub>PSSe<sub>2</sub>: C, 45.3; H, 2.6. Found: C, 45.4; H, 2.9.

**6c.** 33 mg as yellow solid in 7% yield. M.p: 90-91 °C. <sup>1</sup>H NMR (CD<sub>2</sub>Cl<sub>2</sub>, δ), 8.01-7.92 (m, 5H, ArH), 7.51-7.47 (m, 4H, ArH), 7.25-7.10 (m, 2H, ArH) ppm. <sup>13</sup>C NMR (CD<sub>2</sub>Cl<sub>2</sub>, δ), 138.0, 132.2, 131.3, 130.3, 130.1, 129.9, 128.6, 128.4 ppm. <sup>31</sup>P NMR (CD<sub>2</sub>Cl<sub>2</sub>, δ), 76.6 (s, *J*(P,Se<sub>exo</sub>) = 819 Hz, *J*(P,Se<sub>endo</sub>) = 439 Hz) ppm. <sup>77</sup>Se NMR (CD<sub>2</sub>Cl<sub>2</sub>, δ), 386.9 (d, *J*(P,Se<sub>endo</sub>) = 441 Hz), -26.0 (d, *J*(P,Se<sub>exo</sub>) = 820 Hz) ppm. Mass spectrum (EI<sup>+</sup>): m/z 472 [M]<sup>+</sup>, 286 [M-C<sub>6</sub>H<sub>5</sub>PSe]<sup>+</sup>. Anal. Calcd. for C<sub>16</sub>H<sub>11</sub>PSe<sub>3</sub>: C, 40.8; H, 2.4. Found: C, 41.1; H, 2.5.

**Preparation of 3H-dinaphtho[2,1-d:1',2'-f][1,3]diazepin-4-amine (7):** To a solution of 1,1'-binaphthyl-2,2'-diamine **1e** (1.00 g, 3.5 mmol) and 2.40 g of NaOAc in 50 cm<sup>3</sup> of dry methanol and 20 cm<sup>3</sup> of Et<sub>3</sub>N was added 3.4 cm<sup>3</sup> of BrCN (3M in dichloromethane, 10 mmol). The reaction mixture was stirred for 2 h at 0°C, and then at room temperature for 70 h to give a white suspension. The solvent was removed under vacuum, and the residue was extracted by dichloromethane/H<sub>2</sub>O (300 cm<sup>3</sup>, 1:1 ratio) to give two layers of liquid, an organic layer and an aqueous solution. The organic layer was dried over MgSO<sub>4</sub>, filtered and rotary evaporated to give crude product (a white solid). The crude product was purified on silica gel (1:9 = ethyl acetate/dichloromethane as eluent) to afford 1.06 g as a grey green solid. Re-crystallization from dichloromethane/hexane gave **7** as grey green needles. Yield: 98%. Selected IR (KBr, cm<sup>-1</sup>): 3048(w), 1619(vs, C=N), 1508(m), 1430(m), 1380(m), 1348(m), 1280(m), 1210(m), 1145(m), 1092(m), 1022(m), 922(w), 816(s), 748(s). <sup>1</sup>H NMR (CDCl<sub>3</sub>, δ), 7.82-7.78 (m, 2H, ArH), 7.22-7.02 (m, 11H, ArH), 5.28(s, 1H, NH), 3.67 (bs, 1H, NH) ppm. <sup>13</sup>C NMR (CDCl<sub>3</sub>, δ), 142.8, 133.8, 129.6, 128.6, 128.3, 126.9, 124.1, 122.5, 118.4, 112.7, 45.9 ppm. MS (CI<sup>+</sup>, m/z): 310 [M+H]<sup>+</sup>. Anal. Calcd. for C<sub>21</sub>H<sub>15</sub>N<sub>3</sub> (309.36): C, 81.53; H, 4.89; N, 13.58. Found: C, 81.45; H, 4.92; N, 13.67.

**Reaction of compound 7 with WR:** A mixture of 3H-dinaphtho[2,1-d:1',2'-f][1,3]diazepin-4-amine **7** (0.31 g, 1.0 mmol) and WR (0.27 g, 0.5 mmol) in 20 cm<sup>3</sup> of dry toluene was heated to reflux for 30 min. The red suspension turned orange. Upon cooling to room temperature and removal of the solvent, the residue was extracted by ethyl acetate and purified by silica gel (1:1 ethyl acetate/dichloromethane as eluent) to give **2e** as a pinkish white solid (190 mg) in 81% yield based on **WR**.

### X-Ray Structure Determinations

X-ray crystal data for compounds **2a**, **2b** and **4b** were collected at 93 K using a Rigaku MM007 High brilliance RA generator/confocal optics and Mercury CCD system. Data for **6a** were collected using the St Andrews Robotic diffractometer (Saturn724 CCD) at 125 K with graphite monochromated Mo-K $\alpha$  radiation ( $\lambda = 0.71073 \text{ \AA}$ ).<sup>25,26</sup> Intensity data were collected using  $\omega$  steps accumulating area detector images spanning at least a hemisphere of reciprocal space. All data were corrected for Lorentz polarization effects. Absorption effects were corrected on the basis of multiple equivalent reflections or by semi-empirical methods. Structures were solved by direct methods and refined by full-matrix least-squares against F<sup>2</sup> by using the program SHELXTL.<sup>27</sup> Hydrogen atoms were assigned riding isotropic displacement parameters and constrained to idealized geometries. CCDC XXXXX contain the supplementary crystallographic data for this paper. These data can be obtained free of charge via [www.ccdc.cam.ac.uk/conts/retrieving.html](http://www.ccdc.cam.ac.uk/conts/retrieving.html) or from the Cambridge

## Acknowledgement

The authors are grateful to the University of St Andrews and the Engineering and Physical Science Research Council (EPSRC, U.K.) for financial support.

## References and Notes

1. a) *Topics in Current Chemistry: Organoselenium Chemistry, Modern Developments in Organic Synthesis*; T. Wirth, Ed.; Springer: Berlin, Germany, **2000**; b) T. Wirth, *Angew. Chem., Int. Ed.* **2000**, *39*, 3740-3749.
2. a) *Organic Selenium Compounds: Their Chemistry and Biology*; D. L. Klayman, W. H. H. Gunther, Eds.; Wiley: New York, **1973**; b) K. C. Nicolaou, N. A. Petasis, *Selenium in Natural Products Synthesis*; CIS: Philadelphia, **1984**; c) G. Mugesh, W. W. Du Mont, H. Sies, *Chem. Rev.* **2001**, *101*, 2125-2179.
3. T. G. Back, *Organoselenium Chemistry-A Practical Approach*, Oxford Press: New York, 2000.
4. C. Hobartner, and R. Micura, *J. Am. Chem. Soc.* **2004**, *126*, 1141-1149.
5. Y. Buzin, N. Carrasco, and Z. Huang, *Org. Lett.* **2004**, *6*, 1099-1102.
6. D. M. Hatch, J. O. Boles, Z. Z. Li, and L. A. Silks, *Curr. Org. Chem.* **2004**, *8*, 47-64.
7. Y. Kobayashi, Y. Ogra, K. Ishiwata, H. Takayama, N. Aimi, and K. T. Suzuki, *Proc. Natl. Acad. Sci. U.S.A.* **2002**, *99*, 15932-15936.
8. K. EI-Bayoumy, and R. Sinha, *Mutat. Res.* **2004**, *551*, 181-197.
9. P. D. Whanger, *Brit. J. Nutr.* **2004**, *91*, 11-28.
10. G. Roy, M. Nethaji, and G. Mugesh, *J. Am. Chem. Soc.* **2004**, *126*, 2712-2713.
11. Y. T. Zhu, M. D. Gieselman, H. Zhou, O. Averin, and W. A. van der Donk, *Org. Biomol. Chem.* **2003**, *1*, 3304-3315.
12. G. Mugesh, and W. W. du Mont, *Chem. Eur. J.* **2001**, *7*, 1365-1370.
13. A. Krief in "Comprehensive Organometallic Chemistry", Eds E. W. Abel, F. G. A. Stone, G. Wilkinson, Pergamon Press, **1995**, Volume 11, p.515.
14. T. G. Back in "Encyclopaedia of Inorganic Chemistry", Ed. R. B. King, **1994**, volume 7, p. 3690.
15. E. G. Hope and W. Levason, *Coord. Chem. Rev.* **1993**, *122*, 109.
16. I. P. Gray, P. Bhattacharyya, A. M. Z. Slawin, and J. D. Woollins, *Chem. Eur. J.* **2005**, *11*, 6221-6227.
17. G. Hua and J. D. Woollins. *Angew. Chem., Int. Ed.* **2009**, *48*, 1368-1377.

18. G. Hua, Y. Li, A. M. Z. Slawin and J. D. Woollins. *Angew. Chem., Int. Ed.* **2008**, *47*, 2857-2859.
19. P. Bhattacharyya, A. M. Z. Slawin and J. D. Woollins, *J. Organomet. Chem.* **2001**, *623*, 116-119.
20. P. Bhattacharyya, J. Novosad, A. M. Z. Slawin, D. J. Williams and J. D. Woollins, *J. Chem. Soc. Dalton Trans.* **1995**, 1607.
21. M. J. Pilkington, A. M. Z. Slawin, D. J. Williams, P. T. Wood and J. D. Woollins, *Heteroatom Chem.* **1990**, *1*, 351-355.
22. P. Bhattacharyya, A. M. Z. Slawin, D. J. Williams and J. D. Woollins, *Chem. Eur. J.* **2002**, *8*, 2705-2711.
23. P. Bhattacharyya, A. M. Z. Slawin, D. J. Williams and J. D. Woollins, *Angew. Chem. Int. Ed.* **2000**, *39*, 1973-1975.
24. P. Bhattacharyya, A. M. Z. Slawin, D. J. Williams and J. D. Woollins, *Dalton Trans.* **2001**, 300-303.
25. Rigaku (2006). *Crystal Structure*, Version 3.8. Single Crystal Structure Analysis Software. Rigaku/MSK, 9009 TX, USA 77381-5209. Rigaku, Tokyo 196-8666, Japan.
26. Rigaku (2004). *CrystalClear*. Version 1.36. Rigaku Corporation, 3-9-12 Akishima, Tokyo, Japan.
27. G. M. Sheldrick, *Acta Cryst.* **2008**, *A64*, 112-122.

Table 1. Details of the X-ray data collections and refinements for compounds **2a**, **2b**, **4b**, **6a**.

Compound	<b>2a</b>	<b>2b</b>	<b>4b</b>	<b>6a</b>
Formula	C <sub>18</sub> H <sub>15</sub> N <sub>2</sub> PSe	C <sub>26</sub> H <sub>23</sub> N <sub>2</sub> PSe	C <sub>12</sub> H <sub>10</sub> NPSSe	C <sub>16</sub> H <sub>11</sub> PS <sub>2</sub> Se
M	369.25	473.39	310.20	377.32
Crystal system	Triclinic	Triclinic	Monoclinic	Monoclinic
Space group	P-1	P-1	P2(1)/n	P2(1)/c
a/Å	9.108(2)	9.761(3)	5.3325(7)	8.5293(6)
b/Å	9.656(2)	10.318(3)	21.151(3)	9.9922(7)
c/Å	10.017(2)	12.940(4)	10.6495(15)	18.1201(12)
α	103.676(6)	112.187(10)	90	90
β	107.108(3)	95.998(13)	95.255(5)	94.3449(13)
γ	95.654(4)	109.128(14)	90	90
U/Å <sup>3</sup>	804.6(3)	1100.6(6)	1196.1(3)	1539.87(18)
Z	2	2	4	4
μ/mm <sup>-1</sup>	2.430	1.794	3.416	2.7992
Reflections collected	5691	6685	7419	15498
Independent reflections	3086	3806	2150	3516
<i>R</i> <sub>int</sub>	0.0397	0.0614	0.0224	0.0620
R1; wR2 [I > 2σ(I)]	0.0479; 0.0740	0.0642; 0.1219	0.0232; 0.0486	0.0465; 0.0888