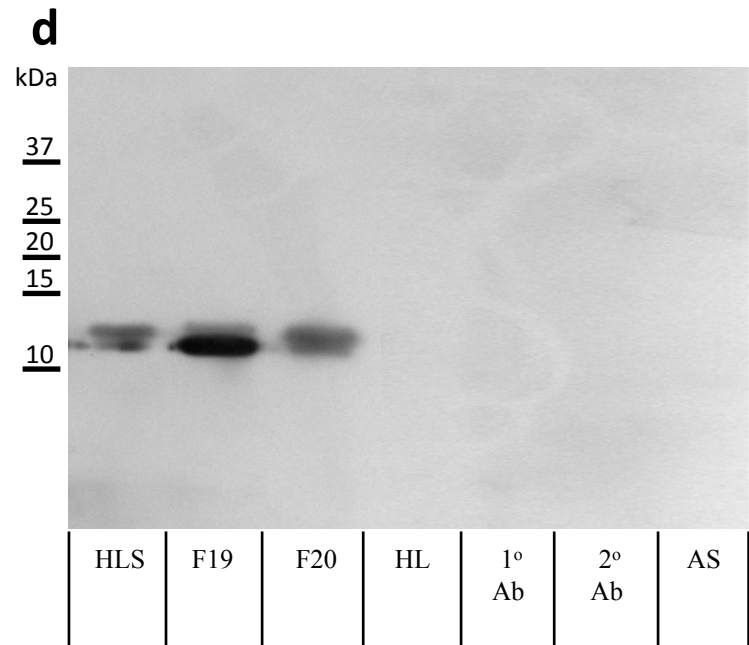
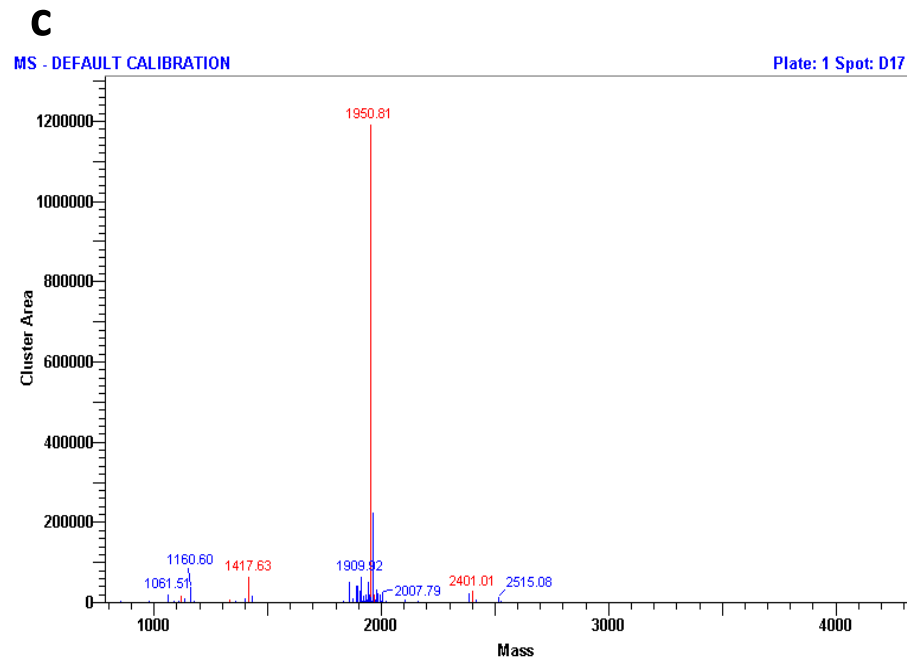
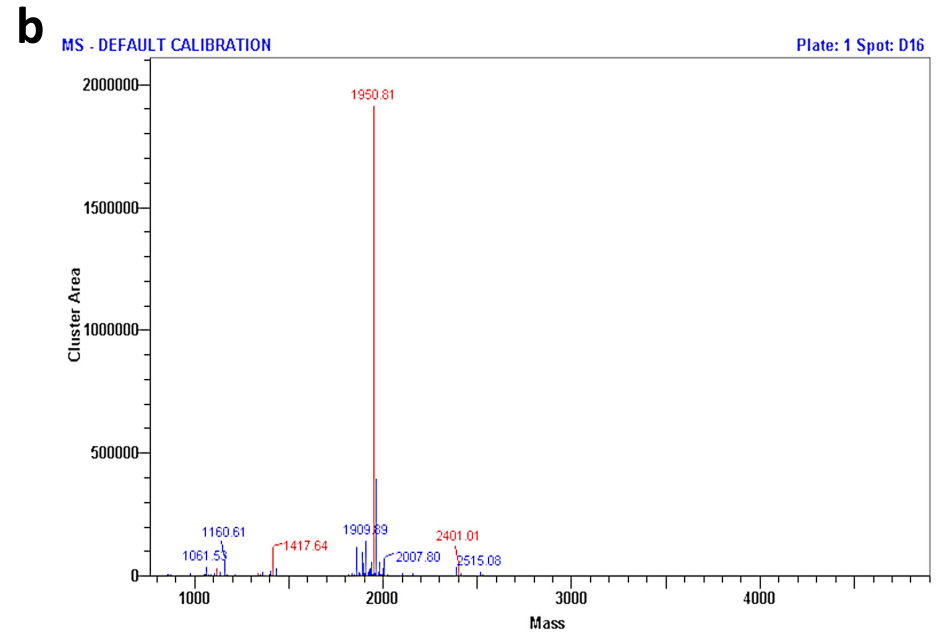
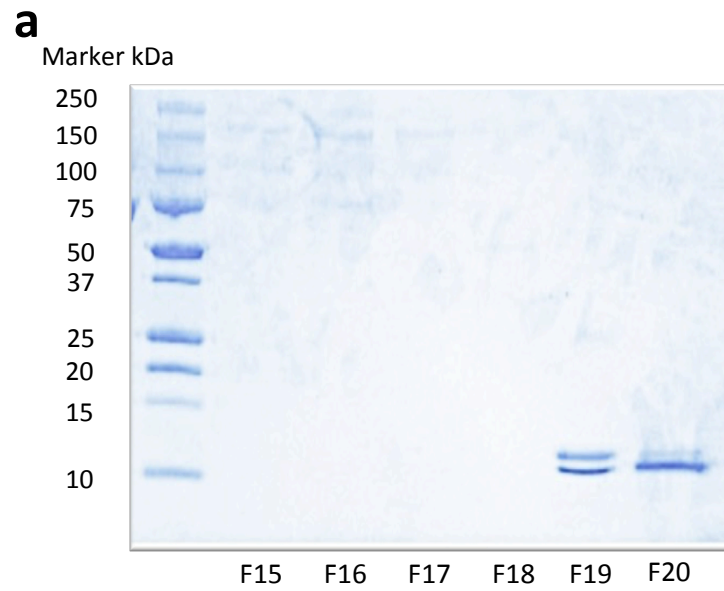


Supplementary Information Figure 1



Supplementary Information

Figure 1a

SDS-PAGE gel stained with Coomassie Blue. Lanes show fractions 15 to 20 collected after FPLC. Fractions 19 and 20 depict two bands of carcinin of approximately 11.5 kDa purified from *C. maenas* haemocyte lysate supernatant (HLS). The bands represent two isoforms of the protein. The upper band in fraction 20 is less abundant than in fraction 19.

Figures 1b and 1c

In-gel trypsin digests and MALDI-MS & MSMS protein analyses of chromatographically-purified carcinin from *C. maenas* haemocytes. Figure b is the spectrum for the upper band of fraction 19 and Figure c is the spectrum for the lower band. For both, the major peaks (in red) match carcinin protein profile from the NCBI database. The vertical axes represent cluster areas (abundance), while horizontal axes represent mass to charge ratio. The two figures reflect the lower concentration of carcinin in the upper of fraction 19.

Figure 1d

Western blot confirming specificity of the anti-carcinin polyclonal antibody. HLS = haemocyte lysate supernatant. F19 = fraction 19 from FPLC of HLS; F20 = fraction 20 from FPLC of HLS; HL = cell-free haemolymph; 1°Ab = primary antibody control; 2°Ab = second antibody control; AS = antiserum control.