

# Microbial associates of the elm leaf beetle: uncovering the absence of resident bacteria and the influence of fungi on insect performance

Johanna Schott,<sup>1</sup> Juliette Rakei,<sup>1</sup> Mitja Remus-Emsermann,<sup>2</sup> Paul Johnston,<sup>3,4</sup> Susan Mbedi,<sup>3,5</sup> Sarah Sparmann,<sup>3,4</sup> Monika Hilker,<sup>1</sup> Luis R. Paniagua Voirol<sup>2</sup>

**AUTHOR AFFILIATIONS** See affiliation list on p. 15.

**ABSTRACT** Microbial symbionts play crucial roles in the biology of many insects. While bacteria have been the primary focus of research on insect-microbe symbiosis, recent studies suggest that fungal symbionts may be just as important. The elm leaf beetle (ELB, *Xanthogaleruca luteola*) is a serious pest species of field elm (*Ulmus minor*). Using culture-dependent and independent methods, we investigated the abundance and species richness of bacteria and fungi throughout various ELB life stages and generations, while concurrently analyzing microbial communities on elm leaves. No persistent bacterial community was found to be associated with the ELB or elm leaves. By contrast, fungi were persistently present in the beetle's feeding life stages and on elm leaves. Fungal community sequencing revealed a predominance of the genera *Penicillium* and *Aspergillus* in insects and on leaves. Culture-dependent surveys showed a high prevalence of two fungal colony morphotypes closely related to *Penicillium lanosoceruleum* and *Aspergillus flavus*. Among these, the *Penicillium* morphotype was significantly more abundant on feeding-damaged compared with intact leaves, suggesting that the fungus thrives in the presence of the ELB. We assessed whether the detected prevalent fungal morphotypes influenced ELB's performance by rearing insects on (i) surface-sterilized leaves, (ii) leaves inoculated with *Penicillium* spores, and (iii) leaves inoculated with *Aspergillus* spores. Insects feeding on *Penicillium*-inoculated leaves gained more biomass and tended to lay larger egg clutches than those consuming surface-sterilized leaves or *Aspergillus*-inoculated leaves. Our results demonstrate that the ELB does not harbor resident bacteria and that it might benefit from associating with *Penicillium* fungi.

**IMPORTANCE** Our study provides insights into the still understudied role of microbial symbionts in the biology of the elm leaf beetle (ELB), a major pest of elms. Contrary to expectations, we found no persistent bacterial symbionts associated with the ELB or elm leaves. Our research thus contributes to the growing body of knowledge that not all insects rely on bacterial symbionts. While no persistent bacterial symbionts were detectable in the ELB and elm leaf samples, our analyses revealed the persistent presence of fungi, particularly *Penicillium* and *Aspergillus* on both elm leaves and in the feeding ELB stages. Moreover, when ELB were fed with fungus-treated elm leaves, we detected a potentially beneficial effect of *Penicillium* on the ELB's development and fecundity. Our results highlight the significance of fungal symbionts in the biology of this insect.

**KEYWORDS** Coleoptera, fungal symbionts, *Penicillium*, *Aspergillus*

Microbial symbionts, here referred to as non-pathogenic microorganisms living in close association with a host, are harbored by many insect species. These

**Editor** Pablo Tortosa, UMR Processus Infectieux en Milieu Insulaire Tropical, Ste Clotilde, France

Address correspondence to Luis R. Paniagua Voirol, [luis.paniagua@fu-berlin.de](mailto:luis.paniagua@fu-berlin.de).

Johanna Schott and Juliette Rakei contributed equally to this article. Author order was determined by mutual agreement between the authors.

The authors declare no conflict of interest.

See the funding table on p. 16.

**Received** 23 June 2023

**Accepted** 31 October 2023

**Published** 5 January 2024

Copyright © 2024 Schott et al. This is an open-access article distributed under the terms of the [Creative Commons Attribution 4.0 International license](https://creativecommons.org/licenses/by/4.0/).

symbiotic microorganisms influence diverse aspects of insect biology, such as nutrition, development, reproduction, immunity, and responses to abiotic stress (1–3). The close associations of microbes with insects are subjected to complex co-evolutionary processes requiring fine-tuned adaptations from both the host and the symbiont (4, 5).

Although numerous insects have been demonstrated to depend on microbial symbionts, recent studies have questioned the prevailing assumption that all insects rely on microbial symbionts (6). For example, stick insects (Phasmatodea) and caterpillars (Lepidoptera) do not harbor resident gut bacterial communities, suggesting that digestion and nutrition of these phyllophagous species do not depend on gut bacteria (7–9). As our understanding of the role of gut microbes in insects progresses, it has become clear that the extent to which insects depend on microbial symbionts varies widely within a broad range. This spectrum spans from a virtual absence of microbial symbionts to obligate mutualisms (5). However, since only a small fraction of insect species has been investigated for their microbial symbionts, it remains unclear how widespread associations with a resident microbial community are within the taxon Insecta.

To date, apart from studies on fungus-farming insects (10) and termite gut protozoa (11), the majority of research on insect-microbe associations has focused on bacteria. Bacterial symbionts have been demonstrated to play a vital part in many hemimetabolous (12, 13) and holometabolous insect species (14–18). However, our understanding of the impact of non-bacterial symbionts on insects is lacking behind. Only recently have interactions between phyllophagous insects and fungi started to receive more and more attention (19–21). For instance, a study by A. Berasategui et al. (22) revealed a mutualistic relationship between the phytopathogenic fungus *Fusarium oxysporum* and the leaf beetle *Chelymorpha alternans*. In this interaction, the fungus protects the beetle's pupal stage against predation, and in turn, the beetle disperses the fungus to its host plant. Such findings suggest that fungal symbionts may be just as important as bacteria in influencing insect biology.

Beetles (Coleoptera) exhibit a broad spectrum of interactions with microbial symbionts (23). For instance, the burying beetle *Nicrophorus vespilloides* relies on gut bacteria to preserve its nutritional resources and enhance resistance against pathogens (24, 25). The tortoise leaf beetle *Cassida rubiginosa* depends on *Stammera* sp. in the gut; these bacteria provide digestive and detoxifying enzymes that facilitate nutrition from leaves (26, 27). The bacterium *Burkholderia gladioli* protects the eggs of the darkling beetle *Lagria villosa* against fungal infection (28, 29). Moreover, some symbionts can have impact on plant antiherbivore defenses. An example for this trifold interaction, i.e., tritagonism (30), is the Colorado potato beetle *Leptinotarsa decemlineata*, harboring oral bacteria that suppress plant antiherbivore defenses (31).

Fungal symbiosis in beetles has predominantly been studied in bark beetles (Curculionidae). Bark beetles exhibit a diverse range of symbiotic relationships with fungi. Bark beetle-fungal interactions range from highly specialized fungus farming by beetles to weak interactions with fungal hitchhikers (32, 33). As bark beetles feed on nutritionally poor substrates, their fungal partners often play a crucial role by providing important nutrients such as nitrogen and sterols (34). However, little is known on other types of beetle-fungus associations outside of the fungus-farming realm of beetles. Although beetles represent the most diverse insect taxon and encompass numerous pests that threaten crops and the forests alike, the interactions of most species with their microbial symbionts are understudied. Further research would advance our understanding of beetle ecology, enhance conservation strategies, and facilitate the development of pest management.

The elm leaf beetle *Xanthogaleruca luteola* (ELB; Chrysomelidae: Galerucinae) is a noteworthy pest species causing extensive damage to elms. As a specialized insect native to Europe and invasive in North America and Australia, it is a threat to elm populations (*Ulmus* spp.) (35). The voracious feeding on elm leaves by both larval and adult stages of the ELB results in widespread defoliation, stunted growth, increased

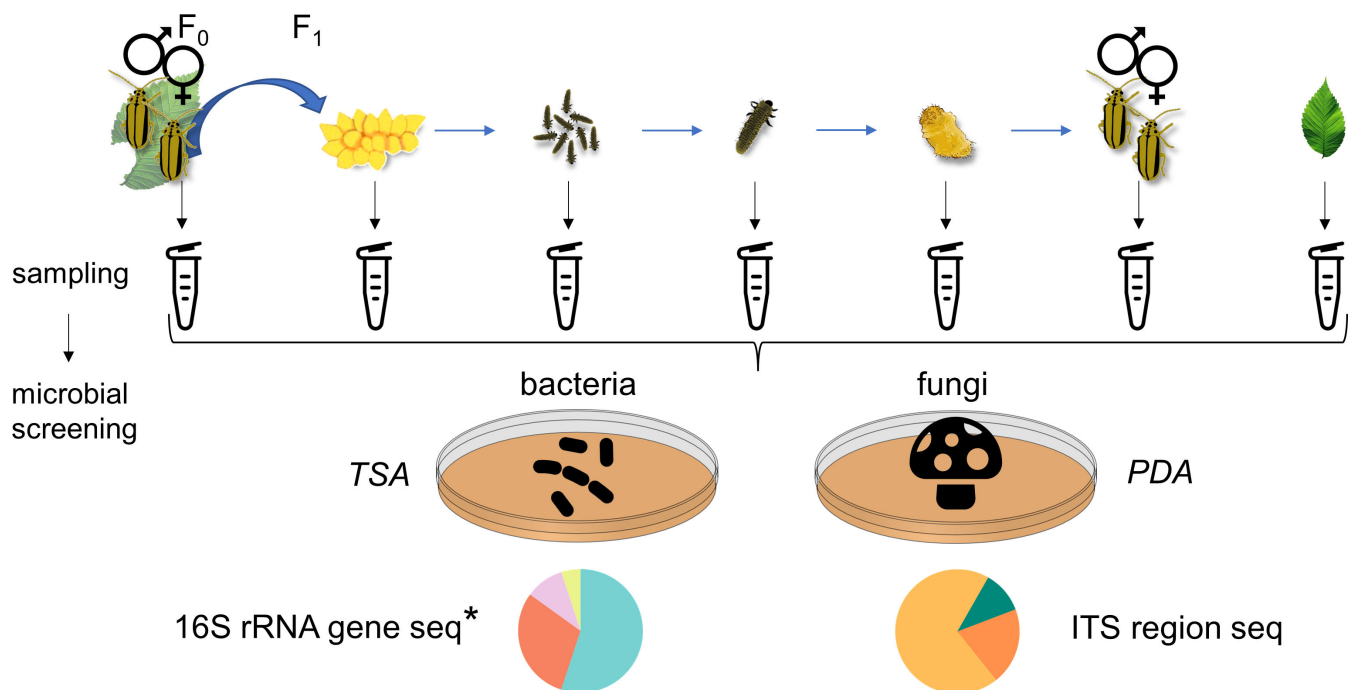
susceptibility to pathogens, and ultimately tree mortality (36). Despite the ecological and economic importance of the beetle's biology, knowledge about its microbiota is lacking. Here, we investigated the abundance and species richness of bacteria and fungi across different life stages and generations of the ELB and its host plant (Fig. 1). Moreover, we answered the question of whether they affect insect performance (Fig. 2).

## RESULTS

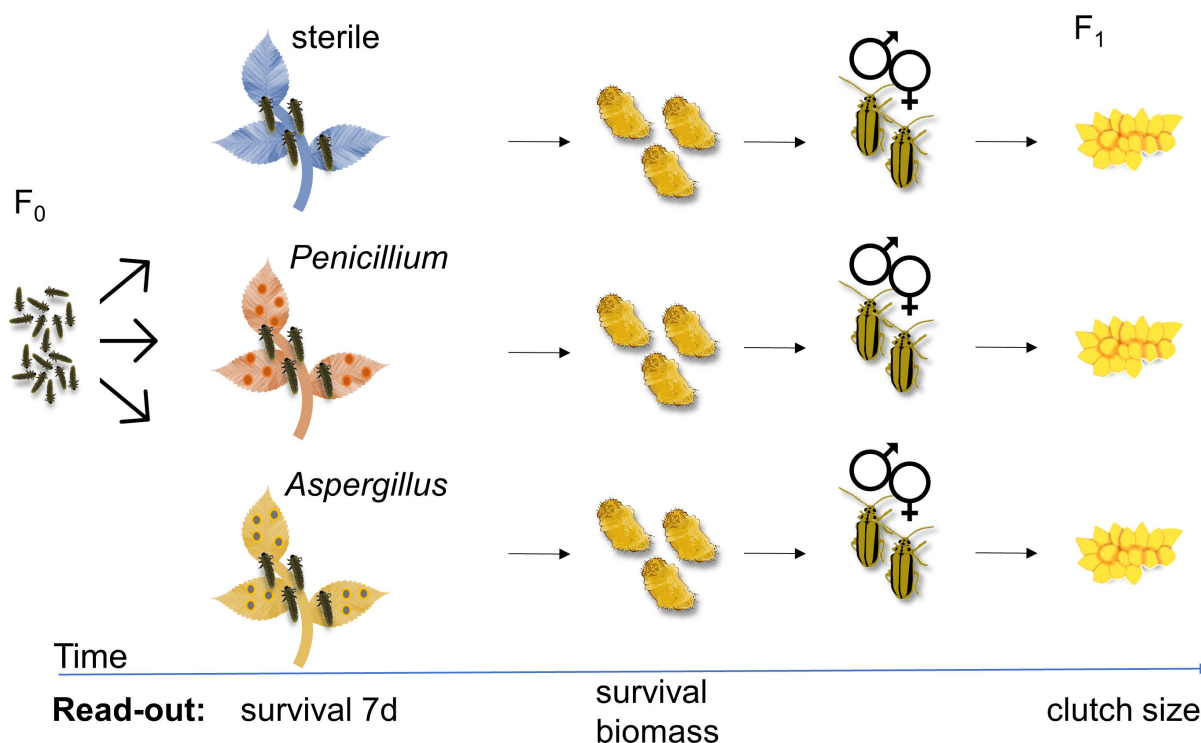
### Scarce bacterial presence observed across elm leaf beetle life stages and on host plant leaves

Using a culture-dependent approach, we investigated whether the ELB harbors a persistent bacterial community by examining CFU abundance and bacterial identity from parental adult insects and their offspring across all life stages. Concurrently, we analyzed samples from intact elm leaves and leaves that had been fed on by adult beetles to determine if the host plant has impact on the bacterial communities found within the insects and if the feeding activity of the insects has impact on the leaf-associated bacterial community (Fig. 1). We used laboratory-reared insects deriving from a natural population, and greenhouse-grown, young elm trees.

We did not detect any CFU in samples from neonates, 7-day-old larvae, pupae, and freshly emerged  $F_1$  adults. Samples from  $F_0$  adults, their eggs, and leaves (intact and beetle-fed) sporadically showed CFU. On average,  $F_0$  adult samples exhibited  $5.9 \times 10^3$  CFU per sample, primarily due to high CFU counts in only 4 out of 28 samples (Fig. 3A). Eggs had on average 0.6 CFU per sample. Intact leaves had on average 73 CFU per sample, while beetle-fed leaves had on average 10 CFU per sample. Thus, only a small portion of the samples provided CFU ( $\leq 25\%$  of  $F_0$  adult, egg, and leaf samples, Fig. 3A). From these samples, we identified only three different colony morphotypes. Sequencing



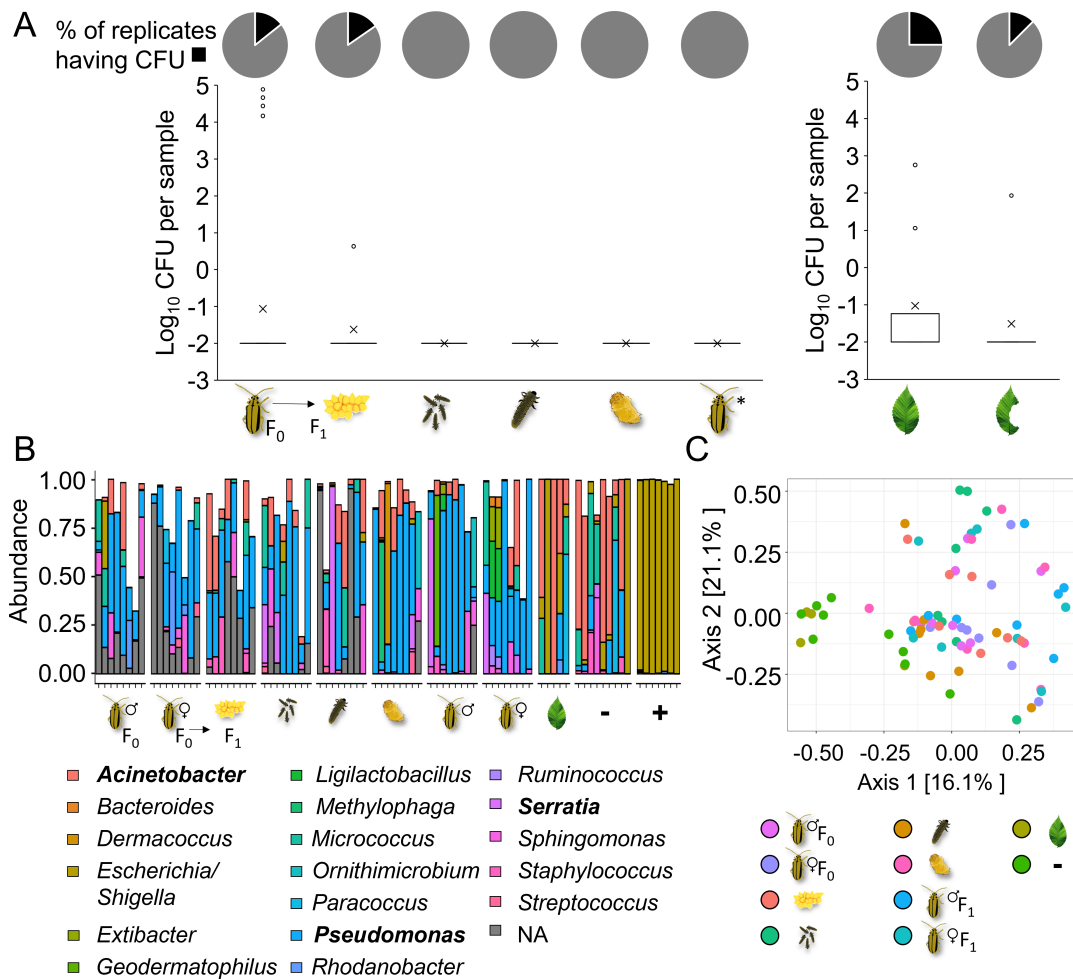
**FIG 1** Overview of sampling and analysis of bacterial and fungal communities from different life stages and generations of the elm leaf beetle (*Xanthogaleruca luteola*) and from elm (*Ulmus minor*) leaves. Samples were collected from  $F_0$  beetles, their  $F_1$  eggs, neonate larvae, 7-day-old larvae, pupae, and freshly emerged  $F_1$  adults. We also sampled intact and beetle-fed elm leaves. Each sample was homogenized and divided into three parts: one part was plated on Trypticase Soy Agar (TSA) and another part was plated on Potato Dextrose Agar (PDA) for culture-dependent analysis of the bacterial and fungal communities. A third part was used for culture-independent analysis of fungal communities of the samples by internal transcribed spacer (ITS) region sequencing. \*For culture-independent analysis of the bacterial communities of the samples by 16S rRNA gene sequencing, an independent experiment following the same design was conducted.



**FIG 2** Assessing the effect of fungi on the performance of the elm leaf beetle (*Xanthogaleruca luteola*). To examine the impact of *Penicillium* and *Aspergillus* on insect performance, neonate larvae were divided into three treatment groups: (i) feeding on surface-sterilized leaves, (ii) feeding on leaves inoculated with *Penicillium* spores, or (iii) feeding on leaves inoculated with *Aspergillus* spores. Each biological replicate comprised a group of five to eight neonates. The larval survival was recorded on day 7 and until pupation. Pupal biomass was recorded. Upon emergence, adults from the same treatment were paired and placed on an untreated elm branch for mating and egg deposition. The number of eggs per egg clutch laid by females that spent their juvenile development on the differently treated leaves was recorded for a period of 2 weeks.

of the 16S rRNA gene revealed that these morphotypes represented the genera *Pseudomonas*, *Serratia*, and *Acinetobacter* (see Table S1 in Supplementary Material). Overall, our culture-dependent analysis did not provide evidence of a persistent bacterial community in the ELB or on host plant leaves.

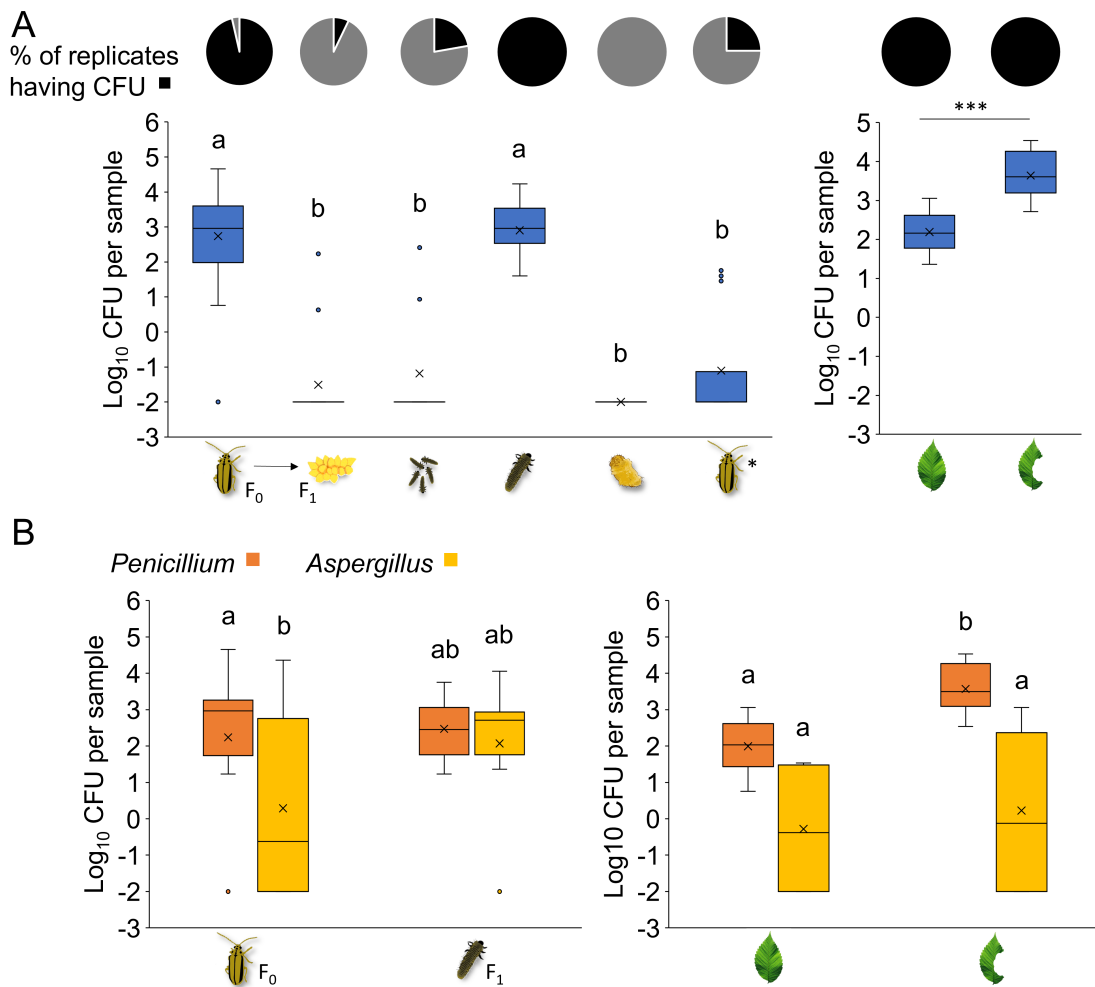
To detect potential bacterial taxa that are unculturable due to factors like genome reduction through co-evolution with their host (37), we conducted an independent experiment and performed 16S rRNA gene amplicon sequencing of samples obtained from adult insects, their offspring (all life stages), and intact elm leaves. Our results show that most of the PCR products yielded bands that were either faint or undetectable upon electrophoresis (see Fig. S1 in Supplementary Material). Nevertheless, the amplicons were sequenced. The sequencing results revealed that most bacterial genera detected in the insect and leaf samples were also present in the negative controls, suggesting that these bacterial amplicons originated from the so-called “kitome” (38, 39) and, thus, were likely contaminants (Fig. 3B; see also Fig. S2 to S3 and Table S2 in Supplementary Material). In accordance with the culture-dependent approach, the most abundant bacterial reads belonged to *Pseudomonas*, *Serratia*, and *Acinetobacter*. A principal coordinate analysis based on Bray-Curtis dissimilarity showed a separation between certain insect sample types (i.e., F<sub>0</sub> adults, F<sub>1</sub> eggs, and adults) and negative controls or leaves. Nonetheless, this separation—observed in 6 out of 45 comparisons—was consistent with varying abundances of *Pseudomonas*, *Serratia*, and *Acinetobacter* reads, detected also in the negative controls but not consistently present throughout the biological samples (Fig. 3C). Thus, congruently with our culture-dependent analysis, the culture-independent analysis did not provide any evidence of a persistent bacterial community in the ELB or its host plant.



**FIG 3** (A) Culture-dependent analysis of bacterial abundance in elm leaf beetles (*Xanthogaleruca luteola*) and on host plant leaves (*Ulmus minor*). Pie charts depict the presence (black) and absence (gray) of bacterial colony-forming units observed upon plating samples from  $F_0$  adults ( $n = 28$ ),  $F_1$  eggs from different females ( $n = 14$ ), pooled sibling neonates ( $n = 9$ ), 7-day-old larvae ( $n = 8$ ), pupae ( $n = 8$ ),  $F_1$  adults ( $n = 16$ ), intact leaves ( $n = 8$ ), and beetle-fed leaves ( $n = 8$ ) on TSA medium. The boxplots display the distribution of  $\log_{10}(x + 0.01)$ -transformed CFU counts across beetle and leaf samples. The box in the boxplot represents the interquartile range (IQR), which contains the middle 50% of the data. The line inside the box indicates the median, while the  $\times$  mark denotes the mean. Outliers are depicted as individual points. \* $F_1$  adults were collected upon emergence and had no contact with elm leaves. (B) Culture-independent analysis of bacterial communities associated with different elm leaf beetle (*X. luteola*) life stages and with host plant leaves (*U. minor*). Relative abundance of the 20 most abundant bacterial taxa, identified through MiSeq sequencing of the 16S rRNA gene. Two taxa lacked genus classification (NA). Each bar represents an individual sample. Three leaf samples of the originally eight samples yielded fewer than 10 reads and, thus, were excluded. Genera identified through culture-dependent approaches are highlighted in bold. (C) Principal coordinate (PCo) analysis of microbial beta diversity (based on Bray-Curtis dissimilarity) for the insect samples, leaf samples, and negative controls shown in panel B. Pairwise comparisons of sample types showed significant differences between  $F_0$  female and  $F_1$  adult samples when compared with the negative controls. Similarly, egg,  $F_0$  male, and  $F_1$  male samples significantly differed from leaf samples ( $P < 0.05$ , Permutational Multivariate Analysis of Variance [PERMANOVA]).

### High abundance of fungi in feeding insect life stages and beetle-fed leaves

To investigate the abundance and species richness of fungi in ELBs and on elm leaves, we also followed a culture-dependent and independent approach. CFU and fungal identity from samples of parental adult insects and their offspring across all life stages, as well as of intact leaves and beetle-fed leaves (Fig. 1), were determined. We found that samples from non-feeding insect stages showed only the sporadic presence of fungal CFU ( $\leq 25\%$  of the samples, Fig. 4A). By contrast, most insect samples from feeding stages and both intact and beetle-fed leaves yielded CFU ( $\geq 96\%$  of the samples, Fig. 4A). Notably, no CFU were obtained from samples of ELB pupae. Samples from  $F_0$  adults and  $F_1$  larvae



**FIG 4** Culture-dependent analysis of fungal abundance in elm leaf beetles (*Xanthogaleruca luteola*) and on host plant leaves (*Ulmus minor*). Samples from F<sub>0</sub> adults ( $n = 28$ ), F<sub>1</sub> eggs from different females ( $n = 14$ ), pooled sibling neonates ( $n = 9$ ), larvae ( $n = 8$ ), pupae ( $n = 8$ ), F<sub>1</sub> adults ( $n = 16$ ), intact leaves ( $n = 8$ ), and beetle-fed leaves ( $n = 8$ ) were analyzed. (A) Pie charts depict the presence (black) and absence (gray) of fungal colony-forming units observed upon plating on PDA medium. The boxplots display the distribution of  $\log_{10}(x + 0.01)$ -transformed CFU counts across beetle and leaf samples. Boxes represent the IQR with the median (line) and mean (x) inside. Whiskers extend to data points within 1.5 times the IQR, and outliers are shown as individual points. Different letters or asterisks above the bars indicate significant differences between groups [insects: Kruskal-Wallis (KW) test  $P < 0.001$ ; Dunn-BH  $P < 0.001$ ; leaves:  $t$ -test  $P < 0.001$ ]. \*F<sub>1</sub> adults were collected upon emergence and had no contact with elm leaves. (B) Colony-forming units of *Aspergillus* sp. LPV01 and *Penicillium* sp. LPV02 obtained from samples of the feeding stages of the elm leaf beetle as well as of intact elm leaves and beetle-fed elm leaves. The boxplots display log-transformed colony-forming unit counts of the two fungi. Boxes represent the IQR with the median (line) and mean (x) inside. Whiskers extend to data points within 1.5 times the IQR, and outliers are shown as individual points. Different letters above bars indicate significant differences (insects: KW test  $P = 0.002$ ; Dunn-BH  $P < 0.01$ ; leaves: KW test  $P < 0.001$ ; Dunn-BH:  $P < 0.05$ ).

yielded significantly more CFU than F<sub>1</sub> eggs, F<sub>1</sub> neonates, F<sub>1</sub> pupae, and freshly emerged F<sub>1</sub> adults, which did not feed yet (Fig. 4A). Moreover, we observed that beetle-fed leaves carried on average 30 times more CFU than intact leaves (Fig. 4A). Hence, our analysis revealed a conspicuous fungal presence during the feeding life stages of the beetles and in feeding-damaged elm leaves.

We identified two different colony morphotypes. Sequencing of the ITS region of the ribosomal operon revealed that these morphotypes were closely related to *Penicillium lanosocoeruleum* and *Aspergillus flavus* (see Table S3 in Supplementary Material). These morphotypes were designated as *Penicillium* sp. LPV01 and *Aspergillus* sp. LPV02, respectively. Their colonies were visually distinguishable, enabling us to enumerate their respective abundances in samples from F<sub>0</sub> adults and F<sub>1</sub> larvae, as well as on intact and

beetle-fed leaves. In samples from  $F_0$  adult beetles, *Penicillium* was significantly more abundant than *Aspergillus*. *Penicillium* abundance in  $F_0$  adults was comparable to that of  $F_1$  larvae. Likewise, the *Aspergillus* abundance in samples from  $F_0$  adult beetles was comparable to that in samples from  $F_1$  larvae (Fig. 4B).

When comparing CFU from intact and beetle-fed leaves, we observed marginally significant differences between *Aspergillus* and *Penicillium* counts in intact leaves, with *Penicillium* sp. LPV01 exhibiting higher numbers ( $P = 0.054$ ). *Aspergillus* was similarly abundant in beetle-fed leaves and intact leaves, whereas the *Penicillium* population increased by 35-fold on beetle-fed leaves (Fig. 4B). These findings indicate that the rise in total CFU counts in beetle-fed leaves is primarily attributed to the increase in the *Penicillium* population rather than *Aspergillus*. Hence, *Penicillium* exhibits a strong response to the presence of the beetle, driving the observed change.

To investigate the potential occurrence of fungal taxa that might not be culturable, we performed an amplicon sequencing of the ITS of the ribosomal operon. Our findings revealed that the *Penicillium* genus was the most abundant one in insect samples ( $F_0$  parents and their offspring across all life stages). *Aspergillus* was the second most abundant genus, identified across all insect life stages, albeit not in every sample. By contrast, the most abundant reads in both intact and beetle-fed leaf samples were attributed to *Aspergillus*. Notably, *Penicillium* was detected on beetle-fed leaves (Fig. 5). Thus, in accordance with our culture-dependent analysis, our culture-independent screening indicates that the fungal community associated with the ELB and elm leaves is dominated by *Penicillium* and *Aspergillus*.

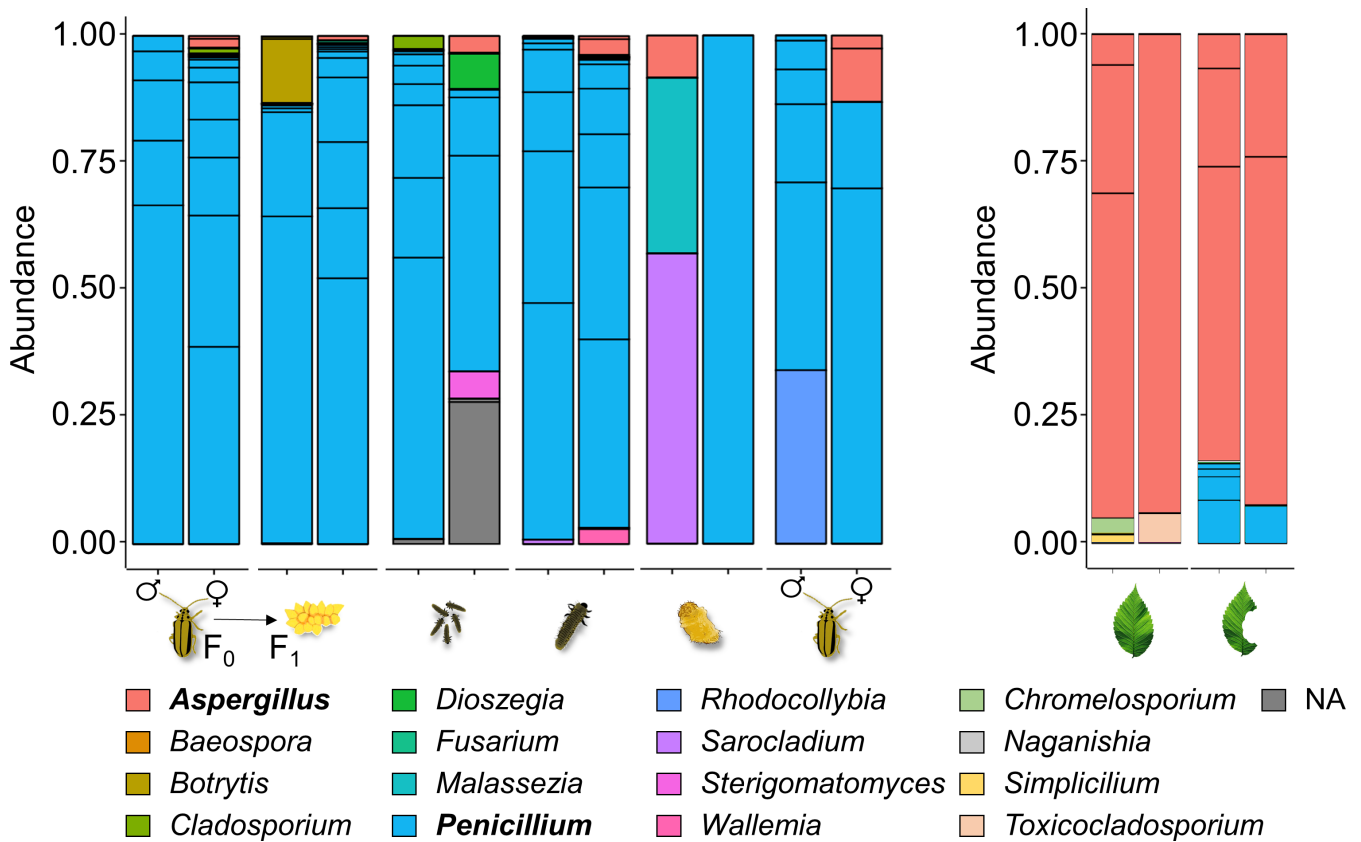
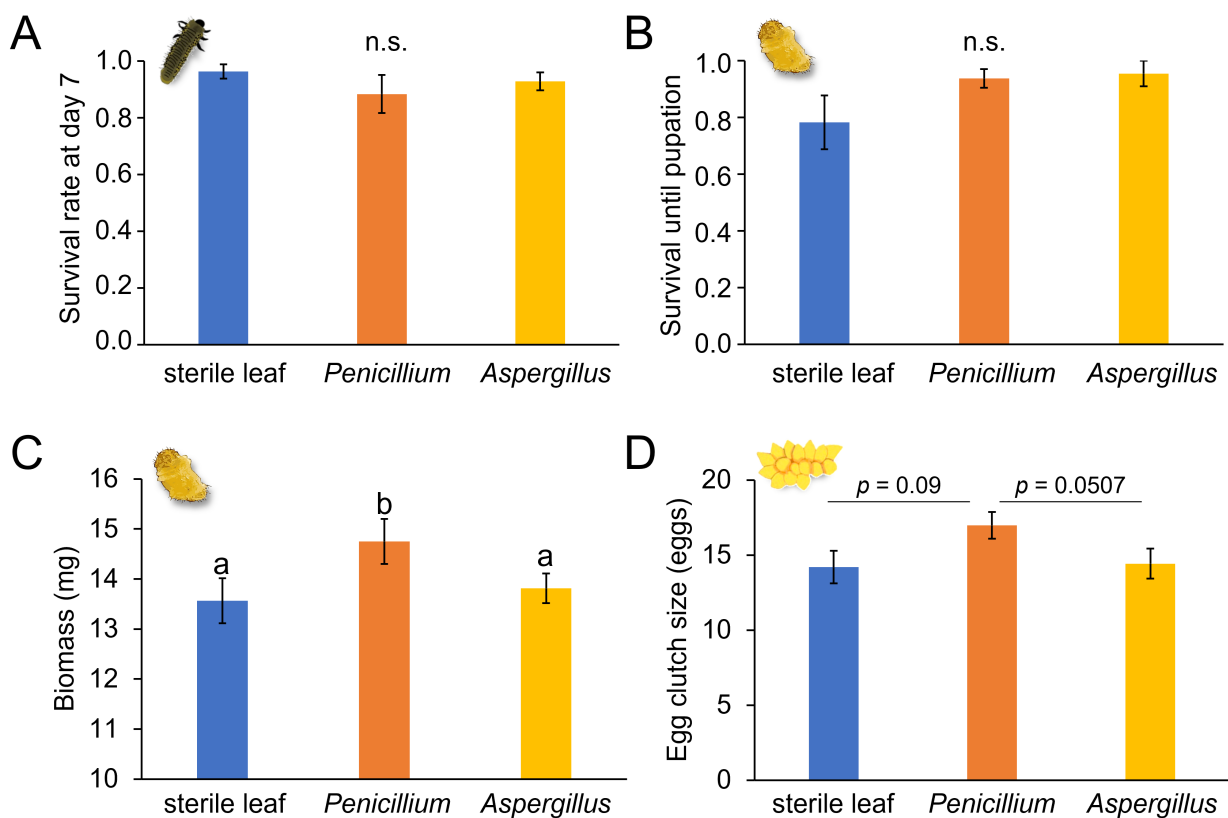


FIG 5 Culture-independent analysis of fungal communities associated with different elm leaf beetle (*Xanthogaleruca luteola*) life stages and with host plant (*Ulmus minor*) leaves. Relative abundance of fungal taxa in beetles (left) and elm leaves (right), identified through MiSeq sequencing of the ITS rRNA gene. Three taxa lacked genus classification (NA), resulting in 17 displayed keys. Each bar represents an individual sample.

## Effect of *Penicillium* sp. LPV01 and *Aspergillus* sp. LPV02 on insect performance

We investigated whether the predominant fungi observed in the ELB active feeding stages and on elm leaves influence beetle performance. We reared the insects on three types of leaves: surface-sterilized leaves, leaves inoculated with *Penicillium* sp. LPV01 spores, and leaves inoculated with *Aspergillus* sp. LPV02 spores. Subsequently, we analyzed larval survival at day 7, survival until pupation, and pupal biomass. After allowing the insects to reach adulthood and mate, we compared the egg clutch sizes produced by females that spent their juvenile development on the differently treated leaves; the females were offered untreated trees for depositing their eggs (Fig. 2).

We found no significant differences in the survival rates of 7-day-old larvae fed on surface-sterilized leaves or on leaves inoculated with either type of fungus (Fig. 6A). Similarly, pupal survival rates were not significantly affected by the different treatments (Fig. 6B). On the other hand, the biomass of pupae significantly differed depending on the treatment (Fig. 6C). Insects that had fed on *Penicillium*-inoculated leaves gained more biomass than those fed on surface-sterilized leaves and those fed on *Aspergillus*-inoculated leaves. In contrast, pupae that had fed on *Aspergillus*-treated and surface-sterilized leaves during their larval development had similar biomass (Fig. 6C). Moreover, there was a tendency for the *Penicillium* treatment to impact fecundity. We observed that females which had developed on *Penicillium*-inoculated leaves tended to produce egg



**FIG 6** Effects of *Penicillium* and *Aspergillus* fungi on elm leaf beetle (*Xanthogaleruca luteola*) performance. Insects were reared on three types of elm (*Ulmus minor*) leaves: surface-sterilized leaves (blue), leaves inoculated with *Penicillium* spores (orange), and leaves inoculated with *Aspergillus* spores (yellow). We recorded (A) larval survival at day 7 ( $n = 12$ ), (B) pupal survival ( $n = 11-12$ ), (C) pupal biomass ( $n = 11-12$ ), and (D) egg clutch size (number of eggs per clutch) produced by females subjected to the different treatments ( $n = 15-17$ ). Error bars represent standard error of the mean (SEM). Different letters above the bars indicate significant differences between groups (KW test;  $P < 0.05$ ; Dunn-BH:  $P < 0.05$ ), "n.s." indicates no significant difference.



clutches with more eggs than those that had developed on sterile leaves ( $P = 0.09$ ) or *Aspergillus*-inoculated leaves ( $P = 0.0507$ , Fig. 6D). The egg clutch sizes of females that had developed on sterile leaves and those on *Aspergillus*-inoculated leaves were not significantly different.

Overall, our findings suggest that *Penicillium* positively affects the ELB performance. By contrast, *Aspergillus* has no discernible effect on the ELB performance.

## DISCUSSION

Our study showed that larvae and adults of the ELB take up fungi from host plant leaves during feeding, but the ELB does not vertically transfer these microbes. Ingested *Penicillium* spores from elm leaves exert some beneficial effects on the beetle's performance. In contrast, no evidence of a persistent bacterial community was detected in the different life stages of the ELB or on the leaves of its host plant.

The scarcity of bacteria in the studied ELB life stages contrasts the presence of beneficial gut bacteria in various coleopteran species. For example, several Scarabaeidae, Cerambycidae, and Curculionidae are known to harbor bacteria with cellulase and xylanase activity (40). Similarly, the Colorado potato beetle (*Leptinotarsa decemlineata*) of the Chrysomelidae family was found to host gut bacteria with cellulase and xylanase activities. Furthermore, this species harbors bacteria capable of suppressing plant defenses upon oral secretion into plant wounds (31, 41). Additionally, gut bacteria of reed beetles (Chrysomelidae) contribute to the synthesis of essential amino acids and the production of the B vitamin riboflavin. They also support the digestion of host plant leaves through the production of pectinases (42).

The low presence of transient and lack of persistent environmental bacteria in the gut of the ELB and on elm leaves are surprising, especially when considering that the insect gut typically offers favorable conditions for bacteria (2, 5). Likewise, the phyllosphere is well known to be colonized by culturable bacteria (43). A study on the gut microbiome of 11 species of *Longitarsus* flea beetles revealed that gut bacteria are likely acquired from the environment. The diversity of bacteria associated with *Longitarsus* had no correlation with the beetles' phylogeny or life history traits (44). One possible reason for the low detection of bacteria in the ELB is the high content of flavonoids, such as kaempferol and quercetin, present in elm leaves (45). While many gut-associated bacteria in insects can break down flavonoids and other phenolic compounds (46), it is worth noting that kaempferol and quercetin also have antimicrobial properties (47). Moreover, it is known that egg deposition by the ELB can enhance the levels of kaempferol and quercetin in elm leaves (45). These antimicrobial compounds might impair bacterial growth in the ELB gut when plant cells are disrupted, and bacteria will be exposed to the flavonoids. Furthermore, the fungi present on the elm leaf surface might contribute to bacterial growth inhibition on elm leaves and, when leaves are ingested by the ELB, also in the ELB gut. *Penicillium* and *Aspergillus* species are well known to produce antibacterial compounds (48–51). Thus, it is tempting to speculate that the presence of these fungi suppresses bacterial growth in the ELB-elm system. Further research investigating the potential antibacterial effects of the retrieved strains could offer valuable insights into whether they inhibit bacterial growth on elm leaves and in the gut of the ELB.

In addition to the phytochemistry of elm leaves and the presence of fungi on the leaves, the semi-natural conditions of our experiments may have contributed to the limited presence of environmental bacteria. The phyllosphere microbiomes of plants grown under greenhouse conditions are known to differ from those grown in natural settings, with the former exhibiting lower microbial abundance and diversity (52, 53). However, plants cultivated under greenhouse conditions are usually also colonized by a number of bacteria in notable amounts (54). Similarly, laboratory-reared insects were found to be colonized by fewer microbes and fewer microbial species than their wild counterparts (55, 56). Essential gut or intracellular bacterial symbionts are expected to be retained and passed down through generations even when the ELB host is fed with greenhouse-grown leaf material. Since we did not observe this, our study provides

evidence that the successful development and reproduction of the ELB does not depend on the presence of bacterial associates. Nevertheless, non-obligate bacterial symbionts providing benefits only under certain circumstances may be lost under greenhouse conditions. Future surveys of beetles from different natural populations could elucidate the extent to which our findings reflect general trends in the gut microbial community composition of the ELB.

The independence of the ELB performance of persistently present bacterial associates indicates that endogenous, self-produced enzymes are available for efficient digestion of elm leaves. Indeed, many herbivorous beetles are able to digest their host plants independently from microbial symbionts. A phylogenomic analyses showed that the Phytophaga clade, which includes the Chrysomeloidea superfamily, acquired plant cell wall-degrading enzymatic activity through horizontal gene transfer (HGT) from microbes. This genetic adaptation enabled the beetles to exploit woody tissues and pectin-rich leaves independently of microbial symbionts (57). Interestingly, a study by R. Kirsch et al. (58) provided evidence suggesting that a pectin-degrading polygalacturonase encoding gene from an ascomycete fungus has been acquired by HGT by a common ancestor of Chrysomeloidea and Curculionoidea. Gene duplications and further HGTs led to functional diversification of these digestive enzymes.

The ascomycete fungi *Penicillium* and *Aspergillus* were found to be abundant in the ELB feeding stages and on elm leaves, while their presence was minimal in eggs, neonate larvae, pupae, and freshly emerged adults. These findings demonstrate that fungi are not transferred between different life stages or generations in the ELB. Instead, it is likely that the ELB acquires these fungi from the environment while feeding. Interestingly, when comparing beetle-fed leaves to intact leaves, we discovered a significant increase in fungal abundance. This increase was primarily attributed to a 35-fold higher abundance of *Penicillium* sp. LPV01 in beetle-fed leaves compared with intact leaves, suggesting that this fungus thrives in the presence of the ELB. One possible explanation for this phenomenon is that *Penicillium* sp. LPV01 obtains nutrients from the ELB's feces since fungal growth on feces was frequently detected (personal observations). Alternatively, the fungus may utilize plant nutrients released when the beetle damages the leaves. Moreover, *Penicillium* sp. LPV01 could also multiply within the beetle's gut upon ingestion and subsequently be excreted onto the leaves during defecation, contributing to the observed higher CFU numbers on beetle-fed leaves.

*Penicillium* sp. LPV01 exhibited the highest similarity to *P. lanosocoeruleum*, a fungus isolated from various plants and soil (59–62). Therefore, it is likely that *Penicillium* sp. LPV01 commonly colonizes plant surfaces. However, it remains unclear what resources this fungus utilizes on elm leaves in the absence of the ELB. Intact elm leaves colonized by *Penicillium* sp. LPV01 were asymptomatic, indicating that this fungus is no phytopathogen of elm. *Aspergillus* sp. LPV02 exhibited the highest similarity to *A. flavus*, a fungus with saprophytic and pathogenic characteristics and widely found in soil, water, air samples, and both healthy and diseased plant tissues (63). We found no indication that *Aspergillus* sp. LPV02 exerts phytopathogenic activity on elm leaves. The number of *Aspergillus* sp. LPV02 CFU did not increase after damage by ELB feeding. Therefore, unlike *Penicillium* sp. LPV01, there is no evidence suggesting that *Aspergillus* sp. LPV02 thrives in the presence of the ELB.

Our study on the impact of the detected *Penicillium* and *Aspergillus* morphotypes on the performance of the ELB suggests that the ELB benefits from taking up *Penicillium* sp. LPV01 with respect to pupal biomass gain in the end of the juvenile development. Moreover, the females resulting from the heavy pupae that developed on *Penicillium* treated leaves tended to lay more eggs per egg clutch than females that developed on untreated leaves. Consistent with our observations, a recent study showed a positive correlation between pupal mass and egg numbers in the early egg laying phase of the ELB (64).

However, it remains unclear how *Penicillium* sp. LPV01 contributes to the improved performance of ELB. The fungus might support the digestion of elm leaves by improving

the degradation of plant cell wall components in the ELB gut. For example, *P. crustosum* and *Fusarium culmorum*, residing in the gut of the linden borer (*Saperda vestita*, Coleoptera: Cerambycidae), can degrade cellulose (65). Similarly, *F. solani*, found in the gut of the Asian longhorned beetle (*Anoplophora glabripennis*, Coleoptera: Cerambycidae), contributes to lignocellulose digestion (66, 67). Furthermore, *Penicillium* might supply its host with nutrients such as amino acids, vitamins, and sterols, akin to bark beetles (68) and stingless bees (69) obtaining these nutrients through their associations with fungal partners. Moreover, *Penicillium* could improve the ELB performance by circumventing or suppressing the elm antiherbivore defenses. Elms are known to increase the levels of the kaempferol and quercetin derivatives in their leaf tissue as a response to ELB infestation; the induced high concentration of a kaempferol derivative was shown to result in increased larval mortality (45, 70). *Penicillium* sp. LPV01 might assist in the degradation of these defense compounds. Many *Penicillium* (and *Aspergillus*) strains are known to transform and metabolize flavonoids (71). Thus, it is reasonable to hypothesize that *Penicillium* sp. LPV01 influences the beetle's susceptibility to flavonoid exposure.

## Conclusion

Our study adds to the growing body of research showing that fungal symbionts of phyllophagous beetles may play important roles in shaping interactions between these beetles and their host plants. Future microbiota surveys on various ELB populations could reveal the prevalence of the tripartite *Penicillium*-elm-ELB interaction. Likewise, further research is needed that addresses the metabolic abilities of the fungi, thus elucidating how they might support the beetles in leaf digestion. Such studies should not only focus on plant cell wall degradation activities of the fungus but also take into account how the fungal symbiont changes defensive plant metabolites in the beetle's gut, thereby probably mitigating plant defenses. Moreover, future studies on the impact of fungal symbionts on the performance of the host should also consider that functions of different fungal species might interfere and shape the outcome. Additionally, genome analyses of the beetles and their transient fungal symbionts could elucidate whether evolutionary ancestors of the ELB took up fungal genes, which still benefit the descendants by, for example, encoding defensive compounds for the host beetles (72), thus rendering them independent of harboring resident, vertically transmitted fungi. Exploring such symbioses will improve our understanding of the evolution of these tripartite interactions between plants, phyllophagous beetles, and microbes. This knowledge could further potentially lead to the development of more effective strategies for controlling ecologically and economically significant pests.

## MATERIALS AND METHODS

### Insects and rearing conditions

Elm leaf beetles (*X. luteola*) were collected from a natural population in Montpellier, France, during summer 2021 and subsequently reared on potted, cloned elm trees (*U. minor*, 3–4 months old) in a greenhouse under long-day conditions (18-hour light/6-hour dark cycle). Approximately 20 adult beetles were placed on three leaves of an elm branch that was enclosed in a microperforated polypropylene bag, thus preventing the escape of the beetles. Three times a week, branches were examined for egg depositions; then, insects were transferred to fresh branches. Branches with egg clutches were also enclosed in bags. Hatchlings developed on the bagged tree branches until pupation. Pupae were transferred to aerated plastic containers in a climate-controlled chamber (18-hour light/6-hour dark cycle, 160  $\mu\text{mol m}^{-2} \text{s}^{-1}$  light intensity, 20°C, and 70% relative humidity) until adult emergence.

## Plant growth conditions

Field elms (*U. minor*) were propagated using an *in vitro* shoot culture established from a single specimen from the Berlin Dahlem region, as described by K. Büchel et al. (73). Once the trees had developed root systems, they were transferred to plastic pots containing a 3:1 soil-to-vermiculite mixture. These potted trees were kept in a climate-controlled chamber (22°C, 16-hour light/8-hour dark cycle, 160  $\mu\text{mol m}^{-2} \text{s}^{-1}$  light intensity, 70% relative humidity). After 10 weeks, the trees were transferred to a greenhouse, where they remained at long-day conditions until needed for experiments. Trees utilized in our study were approximately 14 to 15 weeks old.

## Microbial community sampling and analysis overview

To analyze the species richness and abundance of bacteria and fungi across ELB life stages and generations, freshly emerged adult beetle couples were placed on an elm branch of a tree for mating and egg deposition. The branch was then enclosed in a microperforated polypropylene bag to prevent the beetles from escaping (Fig. 1). We subsequently sampled the parental ( $F_0$ ) couples and their laid eggs. For egg sampling, part of an egg clutch was gently removed from the lower surface of an elm leaf with sterilized tweezers. Larvae were allowed to hatch from the rest of the eggs. We collected samples from ( $F_1$ ) neonate larvae, 7-day-old larvae, pupae, and freshly emerged adults of both sexes. To obtain pupae and adults, prepupae were removed from the bags and transferred to sterile 2-mL reaction tubes with a pierced lid for further development at 25°C. The  $F_1$  pupae and resulting adult beetles had no contact to conspecifics or elms prior to sampling.

Each sample with  $F_0$  or  $F_1$  adult insects contained a single adult beetle, each sample with neonates containing a pool of five neonates, each sample with 7-day-old larvae contained a single individual larva, pupal samples contained each a single pupa, and egg samples contained 12–18 eggs.

To determine whether and how the bacterial and fungal communities of elm leaves match the microbial communities of *X. luteola*, we collected samples from intact elm leaves by cutting leaf sections with ethanol-sterilized metallic scissors. Each leaf sample consisted of a 5-cm<sup>2</sup> leaf material. Utilizing ethanol-sterilized metallic forceps, we transferred the samples to 2-mL FastPrep tubes (Fisher Scientific). Moreover, we sampled feeding-damaged leaves to examine how feeding damage affects the microbial community associated with the leaves. These leaves were feeding damaged by adult beetles for 7 days. The size of these samples was equivalent to the size of samples from intact leaves.

We surface-sterilized parental  $F_0$  insects,  $F_1$  neonates, 7-day-old larvae, pupae, and freshly emerged  $F_1$  adults using sterilization solution (0.5% vol/vol sodium hypochlorite, 0.1% vol/vol SDS, and water). Eggs were not sterilized because microbes might be vertically transmitted from one generation to the next inside and outside the eggs. We added 500  $\mu\text{L}$  sterilization solution to the tubes containing the insect samples, vortexed the samples for 10 s, and rinsed them three times with autoclaved distilled water. This method effectively removes external microbes without affecting the internal microbial load, as demonstrated by a comparison of surface-sterilized insects with non-sterilized insects (data not shown). From this step on, sample processing was conducted in a biological safety cabinet to minimize contamination.

Sterile phosphate-buffered saline (PBS) was added to the tubes containing the samples. A volume of 150  $\mu\text{L}$  was added to the egg and neonate samples, while 200  $\mu\text{L}$  was added to all other samples. The samples were then bead homogenized for 15 s at 4,500 rpm using a Precellys Evolution tissue homogenizer.

For culture-dependent analyses of bacterial and fungal communities, 70  $\mu\text{L}$  of the homogenate was processed immediately as described below. For culture-independent analysis of fungal communities, we stored the remaining volume at  $-80^\circ\text{C}$  for subsequent further analysis.

For culture-independent analysis of bacterial communities, a separate set of samples was collected following the same experimental design (excluding feeding-damaged leaves) and stored at  $-80^{\circ}\text{C}$  until further use. To account for potentially environmental contamination, negative control samples containing only PBS were processed in parallel with the experimental samples. Additionally, positive control samples were incorporated for the culture-independent analysis of bacterial communities. These positive controls consisted of PBS spiked with a resuspended pellet of *Escherichia coli* DH5-alpha (50  $\mu\text{L}$  TE buffer), which had been pre-cultured in 1 mL of Lysogeny Broth at  $37^{\circ}\text{C}$  overnight.

### Culture-dependent analysis of microbial communities

To analyze bacterial and fungal communities via culture-dependent methods, homogenates were 1:10 serially diluted in PBS four times. Aliquots of 35  $\mu\text{L}$  from each dilution were plated onto TSA and PDA supplemented with chloramphenicol (50 mg/L) (Fig. 1). Colony-forming units were counted after 48 hours at  $27^{\circ}\text{C}$ . Negative controls, consisting of PBS only, were performed to monitor for potential contamination.

CFU were morphologically characterized based on size, shape, color, and texture and subsequently restreaked to isolate pure cultures.

Genomic DNA extraction from pure cultures was performed by using the MasterPure DNA Purification Kit (Epicenter), following the manufacturer's protocol. For samples designated for bacterial community analysis, an additional lysozyme digestion step was incorporated before the proteinase K digestion step to enhance bacterial lysis. This step involved the addition of 0.33  $\mu\text{L}$  Ready-Lyse Lysozyme Solution, followed by a 15min incubation period at room temperature.

Universal primers were used to amplify the 16S rRNA gene in bacterial isolates and the internal transcribed spacer region in fungal isolates (Fig. 1): 27F and 1492R for the bacterial 16S rRNA gene (sequences: 5'-AGAGTTTGATCMTGGCTCAG-3' and 5'-GGTACC TTGTTACGACTT-3', respectively) and ITS1 and ITS4 for the fungal ITS region (sequences: 5'-TCCGTAGGTGAACCTGCGG-3' and 5'-TCCTCCGCTTATTGATATGC-3', respectively).

PCR analyses were carried out using the JumpStart Taq ReadyMix from Sigma-Aldrich, using 50 ng of DNA template in a reaction volume of 50  $\mu\text{L}$ . Cycling parameters consisted of an initial denaturation cycle at  $94^{\circ}\text{C}$  for 2 min, followed by 30 cycles of denaturation at  $94^{\circ}\text{C}$  for 30 s, annealing at  $52^{\circ}\text{C}$  for 16S primers and  $55^{\circ}\text{C}$  for ITS primers for 30 s, extension at  $72^{\circ}\text{C}$  for 2 min, and a final extension cycle at  $72^{\circ}\text{C}$  for 5 min. The resulting PCR products were sent to Microsynth SeqLab, Germany, for Sanger sequencing.

For the microbial sequence identification, we used the Basic Local Alignment Search Tool (BLAST) accessible on the National Center for Biotechnology Information (NCBI) website (<https://blast.ncbi.nlm.nih.gov/>). The query sequences were compared with those of the NCBI database, and the top matches were analyzed based on percent identity, alignment length, and *E*-value to identify the closest match to the query sequences. Isolates were given a strain name, and their sequences were deposited in the Sequenced Read Archive (SRA) database under the BioProject accession number PRJNA979994.

### Culture-independent analysis of microbial communities

For culture-independent analysis of the bacterial and fungal communities, genomic DNA was extracted from the above-described samples of elm leaves and different ELB life stages (Fig. 1). The DNA extraction method was the same as described above for the culture-dependent samples.

For amplicon library preparation, we employed a two-step PCR approach. In the first PCR, we amplified the bacterial 16S rRNA gene and the fungal ITS region using universal primers optimized for the Illumina MiSeq platform. For bacteria, we used the 515F (5'-GTGYCAGCMGCCGCGGTAA-3') and 806R (5'-GGACTACNVGGGTWTCTAAT-3') primers, as recommended by the Earth Microbiome Project (EMP: <https://earthmicrobiome.org/>). For fungi, we used custom ITS primers developed by M. Usyk et al. (74): ITS1-30F (5'-GTCCCTGCCCTTGTACACA-3') and ITS1-217R (5'-TTTCGCTGCGTTCTTCATCG-3'). All primers

incorporated Illumina overhang adapter sequences: forward adapter (5'-TCGTCGGCAGC GTCAGATGTGTATAAGAGACAG-3') and reverse adapter (5'-GTCTCGTGGGCTCGGAGATGTG TATAAGAGACAG-3'). We carried out the PCR using the JumpStart Taq ReadyMix from Sigma Aldrich, with 50 ng of DNA template in a 50  $\mu$ L reaction volume. The PCR conditions followed those described for the culture-dependent analysis. We visualized 10  $\mu$ L of the amplified product on a 1% agarose gel stained with ethidium bromide to confirm target amplification. Following this, PCR amplicons were purified using the MagBio HighPrep Clean-up magnetic beads (MagBio, USA) as per the manufacturer's protocol. In the second PCR, we ligated a distinct dual-index barcode to each individual sample. This PCR was performed using 5  $\mu$ L purified PCR product, involving initial denaturation at 95°C for 3 min, followed by eight cycles of 95°C for 30 s, 60°C for 30 s, 72°C for 30 s, and a final 72°C extension for 10 min. Indexed amplicons were subsequently purified with magnetic beads and quantified using a Qubit 2.0 fluorometer and the dsDNA high-sensitivity assay kit (Thermo Scientific, USA).

Equimolar concentrations of each sample were pooled to create libraries. The final library's quality and integrity were assessed using an Agilent 2200 TapeStation and D1000 ScreenTapes (Agilent Technologies, USA). The combined library was sequenced at the Berlin Center for Genomics and Biodiversity Research (BeGenDiv) on the Illumina MiSeq platform, employing the MiSeq v3 (600 cycles) reagent kit for 2  $\times$  300 bp paired-end reads.

### Sequence processing and analysis

The resulting data were analyzed using a full-stack R pipeline (75) incorporating dada2 (76), phyloseq (77), and vegan (78). Primers were removed using cutadapt (79), and the resulting reads were truncated to 200 bp and denoised using a parameterized model of substitution errors (see Supplementary File 1 for full parameters). Denoised read pairs were merged and subjected to *de novo* chimera removal. Taxonomy was assigned using the latest Ribosomal Database Project training set or UNITE for 16S rRNA genes and ITS, respectively. Bray-Curtis Dissimilarity was calculated based on relative abundance to account for differences in library size and modeled using permutational multivariate ANOVAs.

### Insect performance assays

Spore suspensions of fungal isolates identified from ELB samples and elm leaves were prepared to determine how these fungi affect the insect's performance parameters. Two predominant fungal isolates—designated as *Penicillium* sp. LPV01 and *Aspergillus* sp. LPV02—were cultured on PDA with chloramphenicol (50 mg/L) at 27°C until sporulation (5–6 days). Spores were harvested by covering colonies with PBS and gently scraping the mycelium with a sterile inoculator. The spore-containing PBS was collected in sterile 50-mL Falcon tubes, filtered through sterile gauze, and centrifuged at 10,000  $\times$  *g* for 2 min. The supernatant was discarded, and spores were resuspended in sterile water. The spore concentration was adjusted by transferring 500  $\mu$ L of the suspension into an Eppendorf tube, vortexing, and pipetting a fixed volume into a Neubauer chamber for spore counting under a microscope. The spore suspension was diluted to 1,000 spores/ $\mu$ L using sterile water. Aliquots of 50  $\mu$ L were stored at 4°C until further use. Spore viability was regularly confirmed by plating spore samples on PDA before performing experiments.

To investigate the influence of *Penicillium* sp. LPV01 and *Aspergillus* sp. LPV02 on insect performance, we inoculated elm branches with either type of fungal spores. We collected 60–80-cm-long branches from our greenhouse-grown trees, washed the leaves with sterile water, and surface sterilized them by spraying them with 70% ethanol. Control (surface-sterilized) branches were left untreated, while branches for the *Penicillium* and *Aspergillus* treatment groups were sprayed with their respective spore suspensions (10<sup>6</sup> spores/mL) until the entire surface was covered. The suspensions on the leaves dried at room temperature for 3 to 5 hours. Thereafter, the branches were

individually placed in water-filled containers (25 mL), which were sealed with Parafilm, and then placed in plastic boxes labeled according to their treatment.

Neonate ELB larvae were randomly allocated to the treatment groups: (i) feeding on surface-sterilized leaves, (2) feeding on leaves inoculated with *Penicillium* spores, and (3) feeding on leaves inoculated with *Aspergillus* spores. Each treatment group consisted of 11–17 biological replicates, with each replicate containing five to eight neonates feeding together on the leaves of a branch. Larvae fed upon these leaves until pupation under standardized abiotic conditions (18-hour light/6-hour dark cycle, 160  $\mu\text{mol m}^{-2} \text{s}^{-1}$  light intensity, 20°C, and 70% relative humidity). We recorded the survival rate of larvae after a feeding period of 7 days and until pupation. Furthermore, we documented the pupal biomass using an analytical balance (Sartorius Lab Instruments GmbH & Co.). After emergence of the adult beetles, we paired individuals from the same treatment group and placed them on an untreated elm branch. For a period of 2 weeks, we then counted the number of eggs per egg clutch laid by females that had developed on the differently treated branches (Fig. 2).

## Statistics

Statistical analysis was conducted in R (version 4.2.1) for bacterial quantification and insect performance data. Normality of the data was evaluated by the Shapiro-Wilk test, and variance homogeneity was checked by Levene's test. Parametric and non-parametric tests were chosen based on the distribution of the data. We used the Kruskal-Wallis (KW) test followed by Dunn's multiple-comparison test with Benjamini-Hochberg *post hoc* (Dunn-BH) correction for multiple comparisons. Pairwise comparisons were analyzed using Student's *t*-test. PCo analysis on Bray-Curtis dissimilarity and PERMANOVA were used to analyze microbial beta diversity.

## ACKNOWLEDGMENTS

We thank Gabriele Haberberger and Laura Hagemann at the Freie Universität Berlin for their assistance in growing plants and rearing the insects.

This study was supported by the German Research Foundation (Deutsche Forschungsgemeinschaft) (Collaborative Research Centre 973, project B1; <http://www.sfb973.de/>).

J.S., M.H., M.R.E., and L.R.P.V. conceptualized the study. J.S., J.R., and L.R.P.V. performed the experiments. L.R.P.V., S.M., and S.P. processed the samples for MiSeq sequencing. P.J. performed the sequencing analysis. L.R.P.V. evaluated the ecological and microbiological data. J.S. and L.R.P.V. wrote the first draft of the manuscript. All authors contributed to later versions of the manuscript and agreed with the final version.

## AUTHOR AFFILIATIONS

<sup>1</sup>Applied Zoology/Animal Ecology, Institute of Biology, Freie Universitaet Berlin, Berlin, Germany

<sup>2</sup>Microbiology, Institute of Biology, Freie Universität Berlin, Berlin, Germany

<sup>3</sup>Berlin Center for Genomics in Biodiversity Research (BeGenDiv), Berlin, Germany

<sup>4</sup>Leibniz-Institute of Freshwater Ecology and Inland Fisheries, Berlin, Germany

<sup>5</sup>Museum für Naturkunde Leibniz-Institute for Evolution and Biodiversity Science, Berlin, Germany

## AUTHOR ORCIDs

Mitja Remus-Emsermann  <http://orcid.org/0000-0002-6378-9526>

Monika Hilker  <http://orcid.org/0000-0001-7519-7395>

Luis R. Paniagua Voirol  <http://orcid.org/0000-0001-9868-1884>

## FUNDING

Funder	Grant(s)	Author(s)
Deutsche Forschungsgemeinschaft (DFG)	SFB973	Johanna Schott Monika Hilker Luis R. Paniagua Voirol

## AUTHOR CONTRIBUTIONS

Johanna Schott, Conceptualization, Data curation, Formal analysis, Investigation, Methodology, Validation, Visualization, Writing – original draft, Writing – review and editing | Juliette Rakei, Data curation, Formal analysis, Investigation, Validation, Visualization, Writing – original draft | Mitja Remus-Emsermann, Conceptualization, Resources, Writing – original draft, Writing – review and editing | Paul Johnston, Data curation, Formal analysis, Software, Visualization, Writing – review and editing | Susan Mbedi, Investigation, Writing – review and editing | Sarah Sparmann, Investigation, Writing – review and editing | Monika Hilker, Conceptualization, Funding acquisition, Project administration, Resources, Supervision, Writing – original draft, Writing – review and editing | Luis R. Paniagua Voirol, Conceptualization, Data curation, Formal analysis, Investigation, Methodology, Project administration, Software, Supervision, Validation, Visualization, Writing – original draft, Writing – review and editing

## DATA AVAILABILITY

The sequences corresponding to the 16S rRNA gene and the ITS region from the bacterial and fungal isolates are available in GenBank under the accession numbers [OR136186-OR136188](#) and [OR136192-OR136207](#). The data obtained from Illumina sequencing have been uploaded to the SRA database with the Bioproject accession number [PRJNA979994](#).

## ADDITIONAL FILES

The following material is available [online](#).

### Supplemental Material

**Supplemental figures (AEM01057-23-s0001.pdf)**. Fig. S1 to S3.

**Supplementary File 1 (AEM01057-23-s0002.txt)**. R script for sequence processing and analysis.

**Table S1 (AEM01057-23-s0003.xlsx)**. Analysis of bacterial isolates via BLAST.

**Table S2 (AEM01057-23-s0004.xlsx)**. Bacterial OTUs across samples.

**Table S3 (AEM01057-23-s0005.xlsx)**. Analysis of fungal isolates via BLAST.

## REFERENCES

- Douglas AE. 2015. Multiorganismal insects: diversity and function of resident microorganisms. *Annu Rev Entomol* 60:17–34. <https://doi.org/10.1146/annurev-ento-010814-020822>
- Engel P, Moran NA. 2013. The gut microbiota of insects - diversity in structure and function. *FEMS Microbiol Rev* 37:699–735. <https://doi.org/10.1111/1574-6976.12025>
- Lemoine MM, Engl T, Kaltenpoth M. 2020. Microbial symbionts expanding or constraining abiotic niche space in insects. *Curr Opin Insect Sci* 39:14–20. <https://doi.org/10.1016/j.cois.2020.01.003>
- Kaltenpoth M, Roeser-Mueller K, Koehler S, Peterson A, Nechitaylo TY, Stubblefield JW, Herzner G, Seger J, Strohm E. 2014. Partner choice and fidelity stabilize coevolution in a cretaceous-age defensive symbiosis. *Proc Natl Acad Sci U S A* 111:6359–6364. <https://doi.org/10.1073/pnas.1400457111>
- Moran NA, Ochman H, Hammer TJ. 2019. Evolutionary and ecological consequences of gut microbial communities. *Annu Rev Ecol Evol Syst* 50:451–475. <https://doi.org/10.1146/annurev-ecolsys-110617-062453>
- Hammer TJ, Sanders JG, Fierer N. 2019. Not all animals need a microbiome. *FEMS Microbiol Lett* 366:fnz117. <https://doi.org/10.1093/femsle/fnz117>
- Hammer TJ, Janzen DH, Hallwachs W, Jaffe SP, Fierer N. 2017. Caterpillars lack a resident gut microbiome. *Proc Natl Acad Sci U S A* 114:9641–9646. <https://doi.org/10.1073/pnas.1707186114>
- Paniagua Voirol LR, Weinhold A, Johnston PR, Fatouros NE, Hilker M. 2020. Legacy of a butterfly's parental microbiome in offspring performance. *Appl Environ Microbiol* 86:e00596-20. <https://doi.org/10.1128/AEM.00596-20>
- Shelomi M, Lo WS, Kimsey LS, Kuo CH. 2013. Analysis of the gut microbiota of walking sticks (Phasmatodea). *BMC Res Notes* 6:368. <https://doi.org/10.1186/1756-0500-6-368>



10. Li H, Young SE, Poulsen M, Currie CR. 2021. Symbiont-mediated digestion of plant biomass in fungus-farming insects. *Annu Rev Entomol* 66:297–316. <https://doi.org/10.1146/annurev-ento-040920-061140>
11. Brugerolle G, Radek R. 2006. Symbiotic protozoa of termites, vol 6. Springer, Berlin, Heidelberg.
12. Feng H, Edwards N, Anderson CMH, Althaus M, Duncan RP, Hsu Y-C, Luetje CW, Price DRG, Wilson ACC, Thwaites DT. 2019. Trading amino acids at the aphid–*Buchnera* symbiotic interface. *Proc Natl Acad Sci U S A* 116:16003–16011. <https://doi.org/10.1073/pnas.1906223116>
13. Ohbayashi T, Futahashi R, Terashima M, Barrière Q, Lamouche F, Takeshita K, Meng X-Y, Mitani Y, Sone T, Shigenobu S, Fukatsu T, Mergaert P, Kikuchi Y. 2019. Comparative cytology, physiology and transcriptomics of *Burkholderia insecticola* in symbiosis with the bean bug *Riptortus pedestris* and in culture. *ISME J* 13:1469–1483. <https://doi.org/10.1038/s41396-019-0361-8>
14. Rio RVM, Symula RE, Wang J, Lohs C, Wu Y, Snyder AK, Bjornson RD, Oshima K, Biehl BS, Perna NT, Hattori M, Aksoy S. 2012. Insight into the transmission biology and species-specific functional capabilities of tsetse (Diptera: Glossinidae) obligate symbiont *Wigglesworthia*. *mBio* 3:e00240-11. <https://doi.org/10.1128/mBio.00240-11>
15. Hammer TJ, Easton-Calabria A, Moran NA. 2023. Microbiome assembly and maintenance across the lifespan of bumble bee workers. *Mol Ecol* 32:724–740. <https://doi.org/10.1111/mec.16769>
16. Kwong WK, Moran NA. 2016. Gut microbial communities of social bees. *Nat Rev Microbiol* 14:374–384. <https://doi.org/10.1038/nrmicro.2016.43>
17. Lavy O, Gophna U, Gefen E, Ayali A. 2020. Locust bacterial symbionts: an update. *Insects* 11:655. <https://doi.org/10.3390/insects11100655>
18. Moreau CS. 2020. Symbioses among ants and microbes. *Curr Opin Insect Sci* 39:1–5. <https://doi.org/10.1016/j.cois.2020.01.002>
19. Blackwell M. 2017. Made for each other: ascomycete yeasts and insects. *Microbiol Spectr* 5. <https://doi.org/10.1128/microbiolspec.FUNK-0081-2016>
20. Blackwell M. 2017. Yeasts in insects and other invertebrates, p 397–433. In *Yeasts in natural ecosystems: diversity*. Springer Nature.
21. Suh S-O, McHugh JV, Pollock DD, Blackwell M. 2005. The beetle gut: a hyperdiverse source of novel yeasts. *Mycol Res* 109:261–265. <https://doi.org/10.1017/S0953756205002388>
22. Berasategui A, Breitenbach N, García-Lozano M, Pons I, Sailer B, Lanz C, Rodríguez V, Hipp K, Ziemert N, Windsor D, Salem H. 2022. The leaf beetle *Chelymorpha alternans* propagates a plant pathogen in exchange for pupal protection. *Curr Biol* 32:4114–4127. <https://doi.org/10.1016/j.cub.2022.07.065>
23. Salem H, Kaltenpoth M. 2022. Beetle–bacterial symbioses: endless forms most functional. *Annu Rev Entomol* 67:201–219. <https://doi.org/10.1146/annurev-ento-061421-063433>
24. Shukla SP, Plata C, Reichelt M, Steiger S, Heckel DG, Kaltenpoth M, Vilcinskis A, Vogel H. 2018. Microbiome-assisted carrion preservation AIDS larval development in a burying beetle. *Proc Natl Acad Sci U S A* 115:11274–11279. <https://doi.org/10.1073/pnas.1812808115>
25. Wang Y, Rozen DE. 2018. Gut microbiota in the burying beetle, *Nicrophorus vespilloides*, provide colonization resistance against larval bacterial pathogens. *Ecol Evol* 8:1646–1654. <https://doi.org/10.1002/ece3.3589>
26. Salem H, Bauer E, Kirsch R, Berasategui A, Cripps M, Weiss B, Koga R, Fukumori K, Vogel H, Fukatsu T, Kaltenpoth M. 2017. Drastic genome reduction in an herbivore's pectinolytic symbiont. *Cell* 171:1520–1531. <https://doi.org/10.1016/j.cell.2017.10.029>
27. Salem H, Kirsch R, Pauchet Y, Berasategui A, Fukumori K, Moriyama M, Cripps M, Windsor D, Fukatsu T, Gerardo NM. 2020. Symbiont digestive range reflects host plant breadth in herbivorous beetles. *Curr Biol* 30:2875–2886. <https://doi.org/10.1016/j.cub.2020.05.043>
28. Flórez LV, Kaltenpoth M. 2017. Symbiont dynamics and strain diversity in the defensive mutualism between *Lagria* beetles and *Burkholderia*. *Environ Microbiol* 19:3674–3688. <https://doi.org/10.1111/1462-2920.13868>
29. Niehs SP, Kumpfmüller J, Dose B, Little RF, Ishida K, Flórez LV, Kaltenpoth M, Hertweck C. 2020. Insect-associated bacteria assemble the antifungal butenolide gliadifungin by non-canonical polyketide chain termination. *Angew Chem Int Ed Engl* 59:23122–23126. <https://doi.org/10.1002/anie.202005711>
30. Freimoser FM, Pelludat C, Remus-Emsermann MNP. 2016. Tritagonist as a new term for uncharacterised microorganisms in environmental systems. *ISME J* 10:1–3. <https://doi.org/10.1038/ismej.2015.92>
31. Chung SH, Rosa C, Hoover K, Luthe DS, Felton GW. 2013. Colorado potato beetle manipulates plant defenses in local and systemic leaves. *Plant Signal Behav* 8:e27592. <https://doi.org/10.4161/psb.27592>
32. Hulcr J, Barnes I, De Beer ZW, Duong TA, Gazis R, Johnson AJ, Jusino MA, Kasson MT, Li Y, Lynch S, Mayers C, Musuvugwa T, Roets F, Seltmann KC, Six D, Vanderpool D, Villari C. 2020. Bark beetle mycobiome: collaboratively defined research priorities on a widespread insect–fungus symbiosis. *Symbiosis* 81:101–113. <https://doi.org/10.1007/s13199-020-00686-9>
33. Six DL. 2020. Niche construction theory can link bark beetle–fungus symbiosis type and colonization behavior to large scale causal chain-effects. *Curr Opin Insect Sci* 39:27–34. <https://doi.org/10.1016/j.cois.2019.12.005>
34. Klepzig K, Six D. 2004. Bark beetle–fungal symbiosis: context dependency in complex associations. *Symbiosis* 37:189–205.
35. Dominiak BC, Kidston J. 2022. Review of control options for elm leaf beetle, *Xanthogaleruca luteola* Müller, with a focus on Australia. *N Z Entomol* 45:45–57. <https://doi.org/10.1080/00779962.2022.2153440>
36. Cranshaw W, Zimmerman RJ. 2018. Fact sheet no 5.521. Elm leaf beetles. Colorado State University Extension.
37. Ankras NVD, Chouaia B, Douglas AE. 2018. The cost of metabolic interactions in symbioses between insects and bacteria with reduced genomes. *mBio* 9:e01433-18. <https://doi.org/10.1128/mBio.01433-18>
38. Paniagua Virol LR, Valsamakis G, Yu M, Johnston PR, Hilker M. 2021. How the 'kitome' influences the characterization of bacterial communities in lepidopteran samples with low bacterial biomass. *J Appl Microbiol* 130:1780–1793. <https://doi.org/10.1111/jam.14919>
39. Salter SJ, Cox MJ, Turek EM, Calus ST, Cookson WO, Moffatt MF, Turner P, Parkhill J, Loman NJ, Walker AW. 2014. Reagent and laboratory contamination can critically impact sequence-based microbiome analyses. *BMC Biol* 12:87. <https://doi.org/10.1186/s12915-014-0087-z>
40. Banerjee S, Maiti TK, Roy RN. 2022. Enzyme producing insect gut microbes: an unexplored biotechnological aspect. *Crit Rev Biotechnol* 42:384–402. <https://doi.org/10.1080/07388551.2021.1942777>
41. Vilanova C, Marco G, Domínguez-Escribà L, Genovés S, Sentandreu V, Batañol E, Ramón D, Porcar M. 2012. Bacteria from acidic to strongly alkaline insect midguts: potential sources of extreme cellulolytic enzymes. *Biomass Bioenergy* 45:288–294. <https://doi.org/10.1016/j.biombioe.2012.06.017>
42. Reis F, Kirsch R, Pauchet Y, Bauer E, Bilz LC, Fukumori K, Fukatsu T, Kölsch G, Kaltenpoth M. 2020. Bacterial symbionts support larval sap feeding and adult folivory in (semi-)aquatic reed beetles. *Nat Commun* 11:2964. <https://doi.org/10.1038/s41467-020-16687-7>
43. Remus-Emsermann MNP, Schlechter RO. 2018. Phyllosphere microbiology: at the interface between microbial individuals and the plant host. *New Phytol* 218:1327–1333. <https://doi.org/10.1111/nph.15054>
44. Kelley ST, Dobler S. 2011. Comparative analysis of microbial diversity in *Longitarsus* flea beetles (Coleoptera: Chrysomelidae). *Genetica* 139:541–550. <https://doi.org/10.1007/s10709-010-9498-0>
45. Schott J, Fuchs B, Böttcher C, Hilker M. 2022. Responses to larval herbivory in the phenylpropanoid pathway of *Ulmus minor* are boosted by prior insect egg deposition. *Planta* 255:16. <https://doi.org/10.1007/s00425-021-03803-0>
46. Cheng C, Wickham JD, Chen L, Xu D, Lu M, Sun J. 2018. Bacterial microbiota protect an invasive bark beetle from a pine defensive compound. *Microbiome* 6:132. <https://doi.org/10.1186/s40168-018-0518-0>
47. Górniak I, Bartoszewski R, Królczewski J. 2019. Comprehensive review of antimicrobial activities of plant flavonoids. *Phytochem Rev* 18:241–272. <https://doi.org/10.1007/s11101-018-9591-z>
48. Al-Fakih AA, Almaqtri QA. 2019. Overview on antibacterial metabolites from terrestrial *Aspergillus* spp. *Mycology* 10:191–209. <https://doi.org/10.1080/21501203.2019.1604576>
49. Fleming A. 1929. On the antibacterial action of cultures of a *Penicillium*, with special reference to their use in the isolation of *B. influenzae*. *Br J Exp Pathol* 10:226–236. <https://doi.org/10.1093/clinids/2.1.129>

50. Frisvad JC, Smedsgaard J, Larsen TO, Samson RA. 2004. Mycotoxins, drugs and other extrolites produced by species in *Penicillium* subgenus *Penicillium*. *Stud Mycol* 49:201–241.
51. Khattak SU, Lutfullah G, Iqbal Z, Ahmad J, Rehman IU, Shi Y, Ikram S. 2021. *Aspergillus flavus* originated pure compound as a potential antibacterial. *BMC Microbiol.* 21:322. <https://doi.org/10.1186/s12866-021-02371-3>
52. Wei F, Hu X, Xu X. 2016. Dispersal of *Bacillus subtilis* and its effect on strawberry phyllosphere microbiota under open field and protection conditions. *Sci Rep* 6:22611. <https://doi.org/10.1038/srep22611>
53. Williams TR, Marco ML, Lindow S. 2014. Phyllosphere microbiota composition and microbial community transplantation on lettuce plants grown indoors. *mBio* 5:e01564-14. <https://doi.org/10.1128/mBio.01564-14>
54. Maignien L, DeForce EA, Chafee ME, Eren AM, Simmons SL. 2014. Ecological succession and stochastic variation in the assembly of *Arabidopsis thaliana* phyllosphere communities. *mBio* 5:e00682-13. <https://doi.org/10.1128/mBio.00682-13>
55. Belda E, Pedrola L, Peretó J, Martínez-Blanch JF, Montagud A, Navarro E, Urchueguía J, Ramón D, Moya A, Porcar M. 2011. Microbial diversity in the midguts of field and lab-reared populations of the European corn borer *Ostrinia nubilalis*. *PLoS One* 6:e21751. <https://doi.org/10.1371/journal.pone.0021751>
56. Staudacher H, Kaltenpoth M, Breeuwer JAJ, Menken SBJ, Heckel DG, Groot AT. 2016. Variability of bacterial communities in the moth *Heliothis virescens* indicates transient association with the host. *PLoS One* 11:e0154514. <https://doi.org/10.1371/journal.pone.0154514>
57. McKenna DD, Shin S, Ahrens D, Balke M, Beza-Beza C, Clarke DJ, Donath A, Escalona HE, Friedrich F, Letsch H, Liu S, Maddison D, Mayer C, Misof B, Murin PJ, Niehuis O, Peters RS, Podsiadlowski L, Pohl H, Scully ED, Yan EV, Zhou X, Ślipiński A, Beutel RG. 2019. The evolution and genomic basis of beetle diversity. *Proc Natl Acad Sci U S A* 116:24729–24737. <https://doi.org/10.1073/pnas.1909655116>
58. Kirsch R, Gramzow L, Theißen G, Siegfried BD, Ffrench-Constant RH, Heckel DG, Pauchet Y. 2014. Horizontal gene transfer and functional diversification of plant cell wall degrading polygalacturonases: key events in the evolution of herbivory in beetles. *Insect Biochem Mol Biol* 52:33–50. <https://doi.org/10.1016/j.ibmb.2014.06.008>
59. Debbarma R, Prameeladevi T, Tyagi A, Kamil D. 2021. Polyphasic taxonomic characterization of nine *Penicillium* species from soil of different parts of India. *J Environ Biol* 42:1307–1313. <https://doi.org/10.22438/jeb/42/5/MRN-1590>
60. Pitt JI, Hocking AD. 1997. *Penicillium* and related genera, p 203–338. In *Fungi and food spoilage*. Springer, Boston, MA.
61. Samson RA, Seifert KA, Kuijpers AF, Houbraken J, Frisvad JC. 2004. Phylogenetic analysis of *Penicillium* subgenus *Penicillium* using partial  $\beta$ -tubulin sequences. *Stud Mycol* 49:175–200.
62. Zheng Z, Chai S, Chen J, Yang H, Chang J, Yang G. 2022. Isolation and identification of flavonoid - producing endophytic fungi from *Loranthus tanakae* Franch. & Sav that exhibit antioxidant and antibacterial activities. *J Appl Microbiol* 133:1892–1904. <https://doi.org/10.1111/jam.15696>
63. Ramírez-Camejo LA, Zuluaga-Montero A, Lázaro-Escudero M, Hernández-Kendall V, Bayman P. 2012. Phylogeography of the cosmopolitan fungus *Aspergillus flavus*: is everything everywhere? *Fungal Biol* 116:452–463. <https://doi.org/10.1016/j.funbio.2012.01.006>
64. Schott J, Jantzen F, Hilker M. 2023. Elm tree defenses against a specialist herbivore are moderately primed by an infestation in the previous season. *Tree Physiol* 43:1218–1232. <https://doi.org/10.1093/treephys/tpad038>
65. Delalibera I, Handelsman J, Raffa KF. 2005. Contrasts in cellulolytic activities of gut microorganisms between the wood borer, *Saperda vestita* (Coleoptera: Cerambycidae), and the bark beetles, *Ips pini* and *Dendroctonus frontalis* (Coleoptera: Curculionidae). *Curr Opin Insect Sci* 34:541–547. <https://doi.org/10.1603/0046-225X-34.3.541>
66. Geib SM, Filley TR, Hatcher PG, Hoover K, Carlson JE, Jimenez-Gasco M del M, Nakagawa-Izumi A, Sleighter RL, Tien M. 2008. Lignin degradation in wood-feeding insects. *Proc Natl Acad Sci U S A* 105:12932–12937. <https://doi.org/10.1073/pnas.0805257105>
67. Wang L, Li C, Wang X, Wang G, Shang S, Dou Z, Luo Y. 2022. Gut lignocellulose activity and microbiota in Asian longhorned beetle and their predicted contribution to larval nutrition. *Front Microbiol* 13:899865. <https://doi.org/10.3389/fmicb.2022.899865>
68. Six DL. 2012. Ecological and evolutionary determinants of bark beetle-fungus symbioses. *Insects* 3:339–366. <https://doi.org/10.3390/insects3010339>
69. Paludo CR, Menezes C, Silva-Junior EA, Vollet-Neto A, Andrade-Dominguez A, Pishchany G, Khadempour L, do Nascimento FS, Currie CR, Kolter R, Clardy J, Pupo MT. 2018. Stingless bee larvae require fungal steroid to pupate. *Sci Rep* 8:1122. <https://doi.org/10.1038/s41598-018-19583-9>
70. Austel N, Eilers EJ, Meiners T, Hilker M. 2016. Elm leaves ‘warned’ by insect egg deposition reduce survival of hatching larvae by a shift in their quantitative leaf metabolite pattern. *Plant Cell Environ* 39:366–376. <https://doi.org/10.1111/pce.12619>
71. Cao H, Chen X, Jassbi AR, Xiao J. 2015. Microbial biotransformation of bioactive flavonoids. *Biotechnol Adv* 33:214–223. <https://doi.org/10.1016/j.biotechadv.2014.10.012>
72. Pankewitz F, Hilker M. 2008. Polyketides in insects: ecological role of these widespread chemicals and evolutionary aspects of their biogenesis. *Biol Rev* 83:209–226. <https://doi.org/10.1111/j.1469-185X.2008.00040.x>
73. Büchel K, McDowell E, Nelson W, Descour A, Gershenzon J, Hilker M, Soderlund C, Gang DR, Fenning T, Meiners T. 2012. An elm EST database for identifying leaf beetle egg-induced defense genes. *BMC Genomics* 13:242. <https://doi.org/10.1186/1471-2164-13-242>
74. Usyk M, Zolnik CP, Patel H, Levi MH, Burk RD. 2017. Novel ITS1 fungal primers for characterization of the mycobiome. *mSphere* 2:e00488-17. <https://doi.org/10.1128/mSphere.00488-17>
75. Callahan BJ, Sankaran K, Fukuyama JA, McMurdie PJ, Holmes SP. 2016. Bioconductor workflow for microbiome data analysis: from raw reads to community analyses. *F1000Res* 5:1492. <https://doi.org/10.12688/f1000research.8986.2>
76. Callahan BJ, McMurdie PJ, Rosen MJ, Han AW, Johnson AJA, Holmes SP. 2016. DADA2: high-resolution sample inference from Illumina amplicon data. *Nat Methods* 13:581–583. <https://doi.org/10.1038/nmeth.3869>
77. McMurdie PJ, Holmes S. 2013. phyloseq: an R package for reproducible interactive analysis and graphics of microbiome census data. *PLoS One* 8:e61217. <https://doi.org/10.1371/journal.pone.0061217>
78. Oksanen J, Blanchet FG, Friendly M, Kindt R, Legendre P, McGlenn D, Minchin P, O’Hara R, Simpson G, Solymos P. 2022. vegan: community ecology package. R package version 2.5-7 2022
79. Martin M. 2011. Cutadapt removes adapter sequences from high-throughput sequencing reads. *EMBnet J* 17:10–12. <https://doi.org/10.14806/ej.17.1.200>