

## Densities and population sizes of raptors in Uganda's conservation areas

Derek Pomeroy<sup>1\*</sup>, Micheal Kibuule<sup>1</sup>, Dianah Nalwanga<sup>2</sup>, George Kaphu<sup>3</sup>, Michael Opige<sup>2,4</sup>, Phil Shaw<sup>5,6\*</sup>

<sup>1</sup> Department of Zoology, Makerere University, PO Box 7298 Kampala, Uganda

<sup>2</sup> NatureUganda, PO Box 27034, Kampala, Uganda

<sup>3</sup> Uganda Wildlife Authority, PO Box 3530, Kampala, Uganda

<sup>4</sup> Ecological Trends Alliance, PO Box 36839, Kampala, Uganda

<sup>5</sup> School of Biology, Harold Mitchell Building, University of St Andrews, Fife, KY16 9TH, United Kingdom

<sup>6</sup> Institute of Tropical Forest Conservation, Mbarara University of Science and Technology, PO Box 44, Kabale, Uganda

\*Authors for correspondence. e-mail [derek@imul.com](mailto:derek@imul.com); [ps61@st-andrews.ac.uk](mailto:ps61@st-andrews.ac.uk)

### Abstract

Projected increases in Africa's human population over the next 40 years point to further, large-scale conversion of natural habitats into farmland, with far-reaching consequences for raptor species, some of which are now largely restricted to protected areas (PAs). To assess the importance of PAs for raptors in Uganda, we conducted an annual road survey through savanna, pastoral and agricultural land during 2008–2015. Here, we present density estimates for 34 diurnal raptor species, 17 of which were encountered largely or entirely within PAs. These included seven out of eight globally threatened or near-threatened species surveyed. Based mainly on published demographic values, we converted density estimates (birds 100 km<sup>-2</sup>) to numbers of adult pairs, for 10 resident, savanna-dependent species. We then estimated adult population sizes within conservation areas (individual PAs and clusters of contiguous PAs), based on the area of savanna in each site. This suggested that two threatened residents, Martial Eagle *Polemaetus bellicosus* and Lappet-faced Vulture *Torgos tracheliotos*, have national breeding populations of just 53–75 and 74–105 pairs, respectively. A third species, White-headed Vulture *Trigonoceps occipitalis*, may have a breeding population of just 22–32 pairs. In each case, at least 90% of pairs are thought to reside within Uganda's five largest conservation areas. In three cases our estimates of pair density were markedly lower than in other studies, while in six cases they were broadly consistent with published findings, often derived using more intensive survey methods. Further work is required to determine the accuracy of our estimates for individual conservation areas, and to assess the long-term viability of Uganda's threatened raptor populations.

**Keywords:** African raptors, vultures, eagles, raptor abundance, protected areas, savanna

## Introduction

Many African raptor species are suffering regional or continent-wide declines, driven by a wide range of factors (Thiollay 2006a,b, 2007; Virani et al. 2011; Ogada et al. 2015). Species at greatest risk are those most affected by illegal poisoning, the bushmeat trade, killing for traditional ‘medicines’, or through collisions with energy infrastructure (Jenkins et al. 2010; Otieno et al. 2010; Virani et al. 2011; McKean et al. 2013; Ogada 2014; Ogada et al. 2015, 2016; Buij et al. 2016). Since vulnerability to these threats often coincides within species, some African raptors now face a perfect storm of adverse conditions.

For slow-breeding, resident species dependent on natural habitats, the on-going expansion of farmland and the degradation of rangelands present further, more pervasive threats, spanning much of Africa. During 1975–2000 almost 5 million hectares of forest and non-forest natural vegetation was destroyed annually in sub-Saharan Africa, resulting in a 21% reduction in natural vegetation and a 57% increase in the area of agricultural land (Brink and Eva 2009). This expansion coincided with a rise in the human population, which increased by 0.8 billion during 1960–2016, and is projected to increase by a further 1.8 billion by 2060 (Canning et al. 2015; World Bank 2017a,b). The conversion of savanna, forest and other natural habitats into pastoral and agricultural land is thus set to continue, with far-reaching consequences for most African raptors, and for other savanna-dependent species.

The scale and nature of these changes are important, since many African raptors are more abundant in open- or wooded savanna, than in the farmland habitats that often replace them (Herremans and Herremans-Tonnoeyr 2000; Thiollay 2006c, 2007; Anadón et al. 2010; Buij et al. 2013; Pomeroy et al. 2014). Furthermore, since much of Africa’s remaining natural and semi-natural land is now confined to protected areas (PAs), the global populations and ranges of many of its larger, resident raptors are likely to have become highly fragmented.

To fully appreciate the implications of farmland conversion for such species it is important to determine the degree to which they are dependent on protected areas, their density within savanna, and hence the number of pairs each PA is capable of supporting. In a detailed case study, Murn et al. (2016) applied this approach to the White-headed Vulture *Trigonoceps occipitalis*, a species now largely confined to PAs throughout its global range. Their findings highlight the fragmentary nature of the species’ global distribution, showing that 78% of occupied PAs are each likely to support fewer than five breeding pairs. Furthermore, most of the PAs supporting larger breeding populations (of at least 20 breeding pairs) were separated from other occupied PAs by at least 100 km (Murn et al. 2016). The insights provided by this approach are key to understanding the population status of Africa’s PA-dependent raptors more fully.

One country that has already experienced the transition to a predominantly agricultural landscape is Uganda, whose human population increased by a factor of six during 1960–2016 (World Bank 2017c), coinciding with an expansion in agricultural land over the same period (FAO 2018). To investigate the size and distribution of Uganda’s raptor populations, and their dependence on PAs, we conducted a series of annual road surveys spanning 2008–2015. Here, we present abundance estimates for each raptor species within protected savanna, pastoral land and agricultural land, where sample sizes permit. We identify species that were particularly dependent on protected savanna; that is, species we found only in protected savanna, or whose density in savanna was much greater than in pastoral or agricultural land. Based on published demographic values, we estimate the number of adult pairs likely to reside in each protected area, and compare these estimates with breeding densities from elsewhere in Africa. We also examine habitat associations of each species, as a guide to their management within PAs.

## Methods

98 We recorded the number of individuals of each diurnal raptor species seen whilst driving a series of  
100 transects along roads and tracks in Uganda during January (86% of surveys), February (10%) or March  
102 (4%), 2008–2015. Since owl species were likely to be substantially under-counted they were excluded  
104 from the survey. Transects were of 9–122 km in length (recorded by odometer), and in most cases were  
106 surveyed repeatedly over the eight-year period, normally only once each year. The total distance  
108 surveyed was 11 188 km (Supplementary Table S1), at a mean of 33 km hr<sup>-1</sup> on public roads (SD = 11.6;  
n = 44 transect-years), and 25 km hr<sup>-1</sup> in National Parks (SD = 8.9; n = 57 transect-years). Observation  
teams comprised a recorder plus 2–4 observers. In National Parks, and on some tracks outside of the  
parks, observers gained the widest possible view from the cab roof or by standing behind the cab (in an  
open pick-up). We refer to these as ‘outside observers’. Most transects were surveyed between 09:00  
and 17:00, when soaring birds were more likely to be in the air, and hence more visible. Both flying and  
perched individuals were counted.

110  
112 Transects followed a network of unpaved tracks in Uganda’s four main savanna National Parks  
(Murchison Falls, Queen Elizabeth, Kidepo Valley and Lake Mburo NPs) and in Bugungu Wildlife  
Reserve, a buffer area for Murchison Falls NP. They also included public roads from Entebbe to  
114 Mbarara, Entebbe to Murchison Falls NP, and from Soroti towards Moroto (Figure 1). Although some  
birds were identified while the vehicle was moving, we stopped to confirm the identity of most birds  
116 seen, particularly those in groups. Rarely, additional raptors were seen as a result of stopping, and were  
included in the count. Time spent stationary was included in the transect duration.

118  
120 Each transect was assigned to one of three land use categories: savanna, pastoral land or agricultural  
land. Savanna transects followed unpaved tracks through open- or wooded grassland within the  
protected areas named above. Pastoral transects were on public roads through vegetation that was  
122 often superficially similar in structure and species composition to that of natural, protected savanna,  
but lay outside of protected areas, where wild herbivores were largely or wholly replaced by livestock.  
124 Agricultural transects also followed public roads, but through land supporting a range of crops, almost  
all of them in small fields, typically interspersed with patches of non-native trees, e.g. *Eucalyptus*  
126 species. Most pastoral transects included small areas of agricultural land and vice-versa. Both of these  
transect types included human settlements, mainly small trading centres. For each transect we also  
128 recorded the mean altitude (from topographical maps), mean annual rainfall (from Government of  
Uganda 1967) and tree cover. The latter was defined as: open grassland, light tree cover, heavy tree  
130 cover, or closed canopy (i.e. forest). A small proportion of transects within PAs were predominantly tree  
covered, dominated by *Acacia* and *Combretum* spp.

132  
134 The migratory status of each species was defined as: resident, Palearctic migrant, or Afrotropical  
migrant (after Buij et al. 2013). One species (Common Kestrel *Falco tinnunculus*) has both migratory  
and resident populations in East Africa (Zimmerman et al. 1996; Brown et al. 1997).

### 138 ***Abundance estimates***

140 The perpendicular distance of each bird from the road or track (when first seen) was estimated and  
assigned to one of four distance bands; 0–100, 100–200, 200–500 and >500 m. Detections made in the  
142 furthest band were subsequently discarded, since its outer limit was not defined. Four key functions  
(half-normal, hazard-rate, uniform and negative-exponential) were applied, using Distance V6.0,  
144 Release 2 (Thomas et al. 2010). Since the negative-exponential function is no longer recommended  
(Thomas et al. 2010), we selected from among the three remaining functions, using Akaike’s  
146 Information Criterion (AIC), lower AIC values indicating an improved fit, requiring fewer parameters.  
For each species we used a Kruskal-Wallis test to determine whether the proportion of sightings made  
148 in each distance band varied significantly in relation to land use. If so, we applied a Conventional  
Distance Sampling model to data from each land use type separately. Otherwise, we used Multiple  
150 Covariate Distance Sampling (MCDS; Marques et al. 2007; Thomas et al. 2010), stratifying by land use.

152 The public roads surveyed within agricultural and pastoral land were closely associated with  
154 homesteads, villages and trading centres, and supported a moderate volume of traffic. These factors  
156 almost certainly reduced the roadside densities of some raptors, while boosting numbers of  
158 synanthropic species. Since density estimates derived from agricultural and pastoral transects were  
160 unlikely to have been representative of these forms of land use generally, we did not attempt to  
162 estimate population sizes within agricultural or pastoral land. In contrast, density estimates derived  
from transects through protected savanna were much less likely to have been influenced by these  
confounds, since people and infrastructure were virtually absent, traffic was both scarce and slower-  
moving, and roadkill less evident than on public roads. We therefore estimated species' population sizes  
within protected areas by multiplying their density in protected savanna by the area of this land use  
type in Uganda.

164 Land use estimates were provided by the National Biodiversity Data Bank, using data extracted from  
166 WCS & eCountability (2016). Estimates were obtained by first summing the area of all land classed  
168 either as moist or dry savanna, and adding 50% of the land area classed either as forest-savanna mosaic  
170 or as seasonal wetland. This calculation was made for 646 PAs of three types: National Parks, Wildlife  
172 Reserves and Forest Reserves (Supplementary Table S4). A further 66 Forest Reserves (each of less  
174 than 1 km<sup>2</sup>) were excluded, since most of these were known to have been converted to agricultural  
176 production or to exotic tree plantations (National Biodiversity Data Bank *in litt.*). Of the 646 PAs  
178 considered, some were contiguous with other PAs, yielding more extensive blocks of savanna than they  
would have, had they been surrounded by farmland. We therefore identified clusters of contiguous PAs,  
and calculated the total area of savanna within each cluster, rather than treating its component PAs as  
separate sites. Eleven such clusters, encompassing 33 PAs, were included in our final list. Hereafter, we  
refer to both isolated PAs and clusters of contiguous PAs as 'conservation areas' (CAs) (Supplementary  
Table S4). An additional site designation, 'Community Wildlife Management Areas', was excluded from  
the analysis, since these largely comprise pastoral land, and typically support only sparse populations of  
natural prey (D.P. pers. obs.).

180 We identified species that showed a strong affinity for protected savanna, and hence for conservation  
182 areas, based on the species' much higher density in savanna compared with pastoral and agricultural  
184 land (from Table 1). Each species was scored as follows: 1. species encountered only in protected  
186 savanna (during this study), or too few encounters recorded in pastoral or agricultural land to be able  
to estimate densities in these land use types; 2. species whose density in protected savanna was at least  
four times that in pastoral or agricultural land; 3. all remaining species.

For resident species in categories 1 or 2 we estimated the number of pairs likely to reside in each CA, as  
follows. First, we estimated the number of individuals present of all ages, from the species' density in  
savanna and the total area of savanna present. We used published estimates from study populations to  
estimate the proportion of birds likely to be adult, and hence of breeding age. Where published  
demographic values were lacking, we assumed that adults accounted for 65% of the population, this  
being the mean percentage for the five species for which published estimates were available. For each  
species we estimated the number of pairs of adults likely to be present, in two scenarios: where all  
adults were paired; and where 75% of adults were paired. We further assumed that small CAs, with  
sufficient savanna to support only a single pair of a given species, would be occupied only  
intermittently. Following Murn et al. (2016), we took a conservative approach to estimating the number  
of breeding pairs present, by excluding CAs where the amount of savanna was less than double that  
required to support one pair of the target species.

## 200 ***Habitat associations***

202 We investigated the relationship between the number of individuals encountered on each survey of a  
204 given transect, and potential explanatory variables, using generalised linear mixed models (GLMMs).  
These were fitted using the *glmer* function in the *lme4* package in R (3.0.1; R Development Core Team

206 2016). Each case in the dataset represented one transect-year, i.e. one survey of a given transect in a  
given year. The explanatory variables included were: land use type; transect length; mean altitude;  
208 mean annual rainfall; tree cover category; and the presence of 'outside' observers. Since multiple  
surveys were made from each transect, sometimes in the same year, we specified 'transect identity' and  
210 'year' as random terms in each model.

212 In most cases, few or no individuals of a given species were encountered in a given transect-year.  
Hence, the distribution of the dependent variable (the number of individuals encountered) was often  
214 highly skewed. We therefore examined the relationship between the number of individuals  
encountered and potential explanatory variables using two model structures. First, we identified  
216 explanatory variables associated with the presence/absence of a given species, specifying a binomial  
error distribution. In the second model we restricted the dataset to cases where at least one individual  
218 of the target species had been recorded, and specified a Poisson error distribution. For each model type,  
minimal models were derived through stepwise elimination of the least significant explanatory variable,  
220 as recommended in Crawley (2005). Final models were those with the lowest AIC value.

222

## Results

224

### *Population densities*

226

Densities were estimated for 34 raptor species; 12 in arable land, 18 in pastoral land and for all 34 in  
228 protected savanna (Table 1). Fifteen (44%) of the 34 species were encountered only in savanna, or else  
so sparsely in farmland that it was not possible to estimate their densities there. Of those species for  
230 which density estimates could be made in pastoral or agricultural land, two occurred at much lower  
densities (<25%) than they attained in savanna. Thus, 17 raptor species appeared to be almost  
232 exclusively associated with savanna, and were therefore largely or wholly restricted to conservation  
areas. Our density and population estimates for one species, African Fish Eagle *Haliaeetus vocifer*, were  
234 likely to have been misleading, since the species is closely associated with linear aquatic features (rivers  
and lake shores), and is widespread in (unprotected) freshwater habitats. Consequently, we have  
236 excluded this species from further abundance analyses, leaving 16 'savanna-dependent' species (Table  
2). Note, however, that the confidence limits (CLs) associated with these density estimates were  
238 typically wide, showing extensive overlap for the same species in savanna and pastoral or agricultural  
land (Table 1).

240

### *Fragmentation effects*

242 Based on land use data provided by WCS & eCountability (2016), we estimated that savanna habitats  
covered 22 308 km<sup>2</sup> in Uganda in 2010, all of it within conservation areas (CAs). We have used this  
244 figure to estimate the number of individuals present in Uganda's CAs, for each of the 16 savanna-  
dependent species, by multiplying the total area of protected savanna (above) by each species' density  
246 within savanna (Table 2). This approach is likely to have over-estimated population sizes, however,  
since our savanna area figure includes many small fragments. Of the 624 conservation areas identified,  
248 49% contained less than 1 km<sup>2</sup> of savanna, and were therefore unlikely to support even a single pair of  
the species in question. Conversely, the five largest CAs each contained >1,000 km<sup>2</sup> of savanna, and  
250 together accounted for 63% of the total area of protected savanna.

254 Fragmentation of the available habitat is likely to impact mainly on resident species, particularly those  
defending large, year-round breeding territories, and colony-nesters requiring very extensive areas of  
256 savanna in which to forage (e.g. the *Gyps* species). Of the 16 savanna-dependent species, 10 are resident  
in Uganda and are known or likely to breed there. Based on estimates of the proportion of adult birds in  
258 the population, and assuming that 75–100% of adults were paired, at least half of these species are  
likely to have breeding populations of fewer than 100 pairs (Table 3). They include Martial Eagle

260 *Polemaetus bellicosus* (53–75 pairs), Lappet-faced Vulture *Torgos tracheliotos* (74–105 pairs) and  
262 White-headed Vulture (22–32 pairs). In each case, at least 90% of pairs are likely to reside within the  
five largest conservation areas (Table 3).

264 To gauge the effects of fragmentation on species' populations we compared the numbers of adult pairs  
266 estimated using the above approach (Table 3), with the number derived by multiplying pair density by  
the total area of savanna in Uganda (Table 2). That is, we compared population estimates that take  
268 account of resource fragmentation, with those in which fragmentation was disregarded. Not  
surprisingly, national estimates for the 10 resident, savanna-dependent species were all lower when  
270 fragmentation was taken into account; by a median of 41% (quartiles: 30–48%) (Figure 2).

## 272 **Habitat associations**

274 Binomial GLMMs indicated that 11 species were more likely to be detected from savanna transects than  
from pastoral or agricultural transects (Table 4; Supplementary Table S2). A further three species were  
276 more likely to be detected from savanna or pastoral transects, when the data from these were pooled,  
suggesting that the species were attracted by features common to both but missing from agricultural  
278 land. Of these 14 species, five are classed as globally threatened and one as near-threatened. Not  
surprisingly, this group includes the larger, resident eagles (Martial Eagle and Bateleur *Terathopius*  
280 *ecaudatus*) as well as three vulture species (White-backed *G. africanus*, Rüppell's *G. rueppelli* and White-  
headed Vulture). Land use preferences of a fourth species, Lappet-faced Vulture, could not be modelled  
282 in the same way, due to its absence from pastoral and agricultural transects. Among nine species that  
were more likely to be detected from pastoral transects, or from pastoral and agricultural transects in  
284 combination, only one (Hooded Vulture *Necrosyrtes monachus*) is globally threatened (Table 4). Thus,  
seven out of eight globally threatened or near-threatened species were significantly associated with, or  
286 restricted to, protected savanna.

288 In GLMMs fitted with a Poisson error distribution, and restricted to cases where the target species was  
seen, four species (Steppe Eagle *Aquila nipalensis*, Tawny Eagle *A. rapax*, Bateleur and Grey Kestrel *F.*  
290 *ardosiaceus*) were more abundant on savanna transects than elsewhere. Only one species (White-  
headed Vulture) was more abundant on pastoral transects, and one (Hooded Vulture) on pastoral-  
292 agricultural transects combined (Table 4).

294 Five species were more likely to be encountered on transects where tree cover was absent or light,  
while two were positively associated with denser tree cover. Similarly, four species were more  
296 abundant where tree cover was absent, while two were more abundant in denser tree cover. The latter  
included Rüppell's Vulture, which, although more often seen from transects in open or lightly-wooded  
298 grassland, occurred in larger numbers when encountered in more wooded habitat (Table 4).

300

## 302 **Discussion**

304 Driven line transects are one of the most widely used methods for measuring raptor abundance in  
Africa. However they tend to yield a biased estimate of bird density, since conditions adjacent to roads  
306 and tracks will often differ from those in the wider landscape. Here, transects on public roads running  
through pastoral and agricultural land were associated with moderate levels of traffic disturbance,  
308 infrastructure development, housing and vegetation changes, and were considered unlikely to yield  
raptor densities representative of these two land use types. In particular, species deterred by these  
310 factors may have been more abundant at greater distances from public roads within pastoral and  
agricultural land. If so, our figures may tend to over-estimate any differences between these land use  
312 types and the densities attained in protected savanna, where the level of bias associated with (unpaved)  
survey routes was likely to have been lower, and the roadside densities we recorded were more likely

314 to have been representative of protected savanna generally. Nonetheless, we note that foot transects  
316 consistently yield higher raptor densities than driven transects, particularly of smaller species (D.P.  
pers. obs.).

318 Pomeroy et al. (2014) estimated population densities and sizes of six vulture species in Uganda, using  
320 data from the first six years of the survey described here, i.e. during 2008–2013. Not surprisingly, their  
322 density estimates within protected savanna were similar to those presented here. However, their  
324 population estimates differed substantially, for two reasons. First, using an earlier land cover dataset,  
326 they estimated that the area of savanna within Uganda’s PA network was much lower (9 573 km<sup>2</sup>) than  
the figure used in this study (22 308 km<sup>2</sup>). The latter was drawn from a more recent and, we believe,  
more accurate assessment (WCS & eCountability 2016). Second, Pomeroy et al. (2014) treated all  
savanna as a single block when estimating national population sizes, ignoring the effects of  
fragmentation, illustrated here in Figure 2.

328 We estimated the number of adult pairs of each resident, savanna-dependent species likely to reside  
330 within Uganda’s conservation areas. Although in some species immatures may also form pairs, we have  
332 focused on adult pairs, which are more likely to attempt to breed, and to do so successfully. We  
334 therefore estimated the proportion of birds likely to be adult and paired, and then calculated the area of  
336 savanna available to each adult pair. We used this value to exclude sites in which the amount of savanna  
338 available was likely to be too small to support a single adult pair. Since it would have been impractical  
to try to assess the age of each bird seen, the proportion of adults in the population was estimated from  
published findings. In the absence of these data we assumed that 65% of the population were adult, this  
being the median value for those species for which data were available. We further assumed that, for  
resident, savanna-dependent species, 75–100% of adults were paired (Table 3). Since the upper figure  
is probably attained only rarely, we have used the lower figure when discussing the 10 species largely  
confined to conservation areas.

340 Our estimates of the numbers of adult pairs present within conservation areas could prove  
342 conservative, given that most of the 10 savanna-dependent species are likely to be capable, to some  
344 degree, of exploiting adjacent pastoral land, or of regularly crossing farmland to reach other, nearby  
346 conservation areas. If so, some of the sites we rejected as being too small to accommodate a given  
species may be occupied, and hence the species may prove to be more abundant than our estimates  
suggest.

## 348 ***Vultures***

350 Murn et al. (2016) demonstrated the value of using nest densities and demographic parameters to  
352 refine estimates of the global population size of White-headed Vulture, a species highly dependent on  
354 Africa’s PA network. They estimated a global population of 5 475–5 493 birds; much lower than a long-  
356 standing estimate of 7 000–12 000 birds (Mundy et al. 1992), and more precise than the population size  
category in which the species is currently placed by BirdLife International (2018): 2 500–9 999 mature  
individuals.

358 Here, we estimated that the area of savanna available to White-headed Vulture pairs in Uganda  
360 averaged 472 km<sup>2</sup> pair<sup>-1</sup>; slightly higher than the value used by Murn et al. (2016) for East African  
362 populations (400 km<sup>2</sup> pair<sup>-1</sup>), based on their density in the Serengeti ecosystem (Pennycuick 1976).  
364 Murn et al. (2016) estimated that Uganda’s PA series was likely to support 12.2 breeding pairs of White-  
headed Vulture, distributed across 13 sites. Since they assumed that only 75% of pairs attempt to breed  
in any given year, this translates into 16.3 pairs (breeding and non-breeding); fewer than the 22 pairs  
(in five conservation areas) estimated here (Table 3). This disparity may stem from differences in the  
area figures used in the two studies. Murn et al. (2016) assumed that each PA consisted entirely of  
suitable habitat, but that land close to the PA boundary was likely to be less suitable than core areas  
(following Herremans and Herremans-Tonnoeyr 2000). Their population estimates were thus based on

368 the entire area of the site (rather than the area of savanna present), from which they subtracted a fixed  
370 area (50 km<sup>2</sup>), to account for likely boundary effects. In contrast, our estimates were based on the  
372 amount of savanna present, which accounted for 72% of the land within conservation areas, the  
374 remainder comprising less suitable habitat, including wetlands and rain forest. Furthermore, we  
measured the combined area of savanna within clusters of contiguous sites, whereas Murn et al. (2016)  
treated each site as a discrete area, rejecting PAs that were individually too small to support White-  
headed Vulture pairs, even where they were contiguous with other savanna sites.

376 In this study, White-headed Vultures were significantly more likely to be detected from savanna  
378 transects than from pastoral or agricultural transects, but were significantly more abundant on pastoral  
380 transects (Table 4). This finding is likely to prove misleading, however, as it is based partly on a count of  
seven birds seen once on a single pastoral transect; all (26) other sightings were made on savanna  
transects, involving lower numbers per transect.

382 Lappet-faced Vultures are largely confined to conservation areas, which we estimate to hold some 74  
384 pairs, distributed among nine CAs, with c. 93% of pairs residing in the five largest CAs. These figures are  
386 derived from the area of savanna available per pair, which we estimated at 184 km<sup>2</sup>. This figure is a  
388 little higher than estimates derived from nest counts made during aerial surveys in Swaziland (147 km<sup>2</sup>  
pair<sup>-1</sup>; from Monadjem and Garcelon 2005; Bamford et al. 2009) and Zululand, S Africa (149 km<sup>2</sup> pair<sup>-1</sup>;  
from Bamford et al. 2009) (Table S3). Equivalent estimates from other PAs vary widely however; from  
256 km<sup>2</sup> pair<sup>-1</sup> in Kruger NP, S Africa (Murn et al. 2013) to just 43 km<sup>2</sup> pair<sup>-1</sup> in the Serengeti ecosystem  
(Pennycuick 1976), where carcass availability was presumably much higher.

390 Uganda's conservation areas are also likely to support the equivalent of 828 and 222 pairs of White-  
392 backed and Rüppell's Vultures, at a density of one pair per 22 km<sup>2</sup> and 71 km<sup>2</sup>, respectively. For White-  
backed Vulture, similar densities have been reported from aerial counts of nests in Hwange NP,  
394 Zimbabwe (27 km<sup>2</sup> pair<sup>-1</sup>; Howells and Hustler 1984), Linyanti, Botswana (23 km<sup>2</sup> pair<sup>-1</sup>; Bamford et al.  
2009) and Kruger NP (22 and 32 km<sup>2</sup> pair<sup>-1</sup>; Monadjem et al. 2012; Murn et al. 2013). However, much  
396 higher densities have been reported from aerial counts of tree colonies in Swaziland (2 km<sup>2</sup> pair<sup>-1</sup>; from  
Bamford et al. 2009), Zululand (5 km<sup>2</sup> pair<sup>-1</sup>; from Bamford 2009) and Kimberley, SA (1.7 km<sup>2</sup> pair<sup>-1</sup>;  
398 Murn et al. 2017). While Virani et al. (2010) reported similarly high densities (0.7–2.8 km<sup>2</sup> pair<sup>-1</sup>) from a  
400 ground-based survey in Masai Mara GR, Kenya, they noted that the (mainly riverine) areas they  
402 sampled were unlikely to be representative of the entire Masai Mara ecosystem. No comparable density  
estimates were found for Rüppell's Vulture.

404 The population of Palm-nut Vulture *Gypohierax angolensis* in Uganda's conservation areas is likely to  
406 include some 222 pairs, occupying 15 CAs. We estimate that the amount of savanna available per pair  
was 71 km<sup>2</sup>, suggesting that suitable habitat is very patchily distributed. A much lower estimate, of 2  
km<sup>2</sup> pair<sup>-1</sup>, has been reported from Cote d'Ivoire, but was considered exceptional (Brown et al. 1997).

## 408 **Eagles**

410 Uganda's conservation areas encompass sufficient savanna to support some 53 pairs of Martial Eagle,  
412 across seven CAs. Our estimate of the mean area available pair<sup>-1</sup> (241 km<sup>2</sup>) was higher than in the Masai  
Mara (120 km<sup>2</sup> pair<sup>-1</sup>; Ong 2000), Hwange NP (133 km<sup>2</sup>; Hustler and Howells 1987) and Kruger NP:  
414 108–194 km<sup>2</sup> pair<sup>-1</sup> (Snelling 1970; Herholdt and Kemp 1997; van Eeden et al. 2017), but lower than in  
Tsavo East NP, Kenya (300 km<sup>2</sup> pair<sup>-1</sup>; Smeenk 1974). Not surprisingly, lower densities have been  
416 recorded in desert or semi-desert habitat: Kalahari Gemsbok NP, South Africa supported 20–30 pairs  
(at 320–480 km<sup>2</sup> pair<sup>-1</sup>) in 1988–1994, dropping to just nine breeding pairs (889 km<sup>2</sup> pair<sup>-1</sup>) by 2011–  
418 2012 (Herholdt and Kemp 1997; Amar et al. 2016).

420 The mean area of protected savanna available to Bateleur pairs (21 km<sup>2</sup> pair<sup>-1</sup>) was much lower than  
has been reported from Kenya (170 km<sup>2</sup> pair<sup>-1</sup>; Brown et al. 1997), but closer to that recorded in Kruger



422 NP: 3.1 nests 100 km<sup>-2</sup>; equivalent to 32 km<sup>2</sup> nest<sup>-1</sup> (Watson 1990a,b). When adjusted to account for  
424 non-breeding pairs (16% of pairs p.a.; Watson 1990b), the area available to each pair will have been  
426 lower, averaging 27 km<sup>2</sup> pair<sup>-1</sup>, i.e. closer to our estimate. Nonetheless, we feel that our population  
estimate for Uganda's conservation areas (862 pairs in 54 CAs) should perhaps be treated with caution.

Density estimates for African Hawk-eagle *A. spilogaster* in southern Africa range between 19 and 33 km<sup>2</sup>  
428 pair<sup>-1</sup> in Kruger NP and Matobo, Zimbabwe (Snelling 1970; Steyn 1975), and 18–59 km<sup>2</sup> pair<sup>-1</sup> in  
Hwange NP (Hustler and Howells 1988). Similarly, in East Africa, Smeenk (1974) reported an average  
430 territory size of 56 km<sup>2</sup> pair<sup>-1</sup> in Tsavo East NP. In contrast, our density estimate was extremely low,  
432 despite the species being widespread in East Africa, including Uganda. We recorded a density of just  
0.29 birds 100 km<sup>-2</sup>, suggesting that suitable habitat was very patchily distributed, or that the species  
434 was substantially under-recorded from driven line transects. Reasons for the disparity between our  
figures and those derived from more intensive studies thus remain unclear.

436 In tropical Africa, Black-chested Snake-eagle *Circaetus pectoralis* and its congeners occur at low  
densities, each pair requiring 'several hundred km<sup>2</sup>' (Brown et al. 1997). This suggests that our very low  
438 density estimate (384 km<sup>2</sup> pair<sup>-1</sup>), may be broadly accurate, yielding a population estimate of *c.* 30 pairs,  
in the five largest CAs.

440

#### 442 **Red-necked Falcon *F. ruficollis***

444 Our Red-necked Falcon density estimate (342 km<sup>2</sup> pair<sup>-1</sup>) differed markedly from published estimates.  
Nests have been found as little as 1.3–3.2 km apart in Zambia and 1.9–15.5 km apart in South Africa,  
446 although these spacings were regarded as exceptional (Tarboton 2001). Inter-nest distances of 3–10  
km, indicating densities of 7–78 km<sup>2</sup> pair<sup>-1</sup>, are regarded as being more typical in southern Africa  
448 (Tarboton 2001), while a density of 167 km<sup>2</sup> pair<sup>-1</sup> has been recorded in the central Namib (Brown  
1988). Our low density estimate suggests that conditions appropriate for the species are extremely  
450 patchily distributed in Uganda's conservation areas. This may reflect the species' association with  
Borassus Palm *Borassus aethiopum*, which is generally scarce in most of Uganda (D.P., pers. obs.)

452

#### 454 **Conclusions**

456 Road surveys within four of Uganda's National Parks yielded raptor densities that were in most cases  
broadly comparable with published estimates derived from other studies, most of which involved  
458 ground-based nest monitoring or expensive aerial surveys (Table S3). For Uganda's globally threatened  
species at least, further work is required to determine whether the estimates presented here accurately  
460 reflect the numbers of adult pairs present within the National Parks surveyed; and whether they are  
equally applicable to other forms of PA, as well as to smaller conservation areas generally. There is also  
462 a pressing need to assess the viability of threatened raptor species particularly dependent on Uganda's  
conservation areas, namely Martial Eagle, Lappet-faced, White-headed, Rüppell's and White-backed  
464 Vulture. Breeding populations of the first three species are both sparse and fragmented, placing their  
long-term viability in Uganda in doubt. While the breeding status of the two *Gyps* vultures is unclear,  
466 there is strong evidence that they can make long-distance movements within Uganda (Pomeroy 2008),  
and are likely to be part of a regional meta-population. This will need to be so for all species with  
468 fragmented populations if they are to survive in the long term. Much more needs to be known of the  
populations and movements of these five species, to help secure their Ugandan populations in  
470 perpetuity.

472

#### 474 **Acknowledgements**

474

476 We thank Uganda Wildlife Authority for granting us permission to make road counts in protected areas,  
and for providing their most experienced rangers to assist with the survey. Several volunteers from  
478 *Nature Uganda* acted as recorders. Our thanks go to Taban Bruhan, Judith Mirembe, Roger Skeen, Lydia  
Tushabe and Lilian Twanza. Roger Skeen also kindly provided count data for Kidepo Valley National  
480 Park. Murn Campbell and Darcy Ogada made valuable comments on the manuscript. We are especially  
grateful to Will Cresswell for providing guidance on modelling in R. We also thank Alan Lee, Steffen  
482 Oppel and an anonymous reviewer for their comments. The cost of field work was generously covered  
by The Peregrine Fund (USA) and the Royal Society for the Protection of Birds (UK).

## 484 References

- 486 Amar A, Cloete D, Whittington M. 2016. Using independent nest survey data to validate changes in  
reporting rates of Martial Eagles between the Southern African Bird Atlas Project 1 and 2. *Ostrich*  
488 87: 1–5, DOI: 10.2989/00306525.2015.1089333
- Anadón JD, Sánchez-Zapata JA, Carrete M, Donázar JA, Hiraldo F. 2010. Large-scale human effects on an  
490 arid African raptor community. *Animal Conservation* 13: 495–504.
- Anderson MD. 2000. African White-backed Vulture. In: K.N. Barnes (ed.). *The Eskom Red Data Book of*  
492 *birds of South Africa, Lesotho and Swaziland*. BirdLife South Africa, Johannesburg, 169 pp.
- Bamford AJ, Monadjem A, Anderson MD, Anthony A, Borello WD, Bridgeford M, Bridgeford P, Hancock P,  
494 Howells B, Wakelin J, Hardy ICW. 2009. Trade-offs between specificity and regional generality in  
habitat association models: a case study of two species of African vulture. *Journal of Applied Ecology*  
496 46(4): 852–860. doi: 10.1111/j.1365-2664.2009.01669.x
- BirdLife International 2018. *IUCN Red List for birds*. Downloaded from <http://www.birdlife.org> on  
498 31/01/2018
- Brink AB, Eva HD. 2009. Monitoring 25 years of land cover change dynamics in Africa: a sample based  
500 remote sensing approach. *Applied Geography* 29: 501–512.
- Brown CJ. 1988. Greater Kestrel and Rednecked Falcon populations in the Ganab region of the central  
502 Namib Desert. *Gabar* 3: 21–25
- Brown LH, Urban EK, Newman K. 1997. *The Birds of Africa. Volume I*. Academic Press: London, UK
- 504 Buij R, Croes BM, Gort G, Komdeur J. 2013. The role of breeding range, diet, mobility and body size in  
associations of raptor communities and land-use in a West African savanna. *Biological Conservation*  
506 166: 231–246.
- Buij R, Nikolaus G, Whytock R, Ingram D, Ogada D. 2016. Trade of threatened vultures and other raptors  
508 for fetish and bushmeat in West and Central Africa. *Oryx* 50(4): 606–616.  
doi:10.1017/S0030605315000514
- 510 Canning D, Raja S, Yazbeck AS. 2015. *Africa's Demographic Transition: Dividend or Disaster? Overview*  
*booklet*. Africa Development Forum series. World Bank: Washington, DC. License: Creative  
512 Commons Attribution CC BY 3.0 IGO
- Crawley MJ. 2005. *Statistics: an introduction using R*. Chichester: John Wiley and Sons.
- 514 FAO 2018. <http://www.fao.org/faostat/en/#country/226> Downloaded 04/04/2018
- Government of Uganda 1967. *Atlas of Uganda* 2nd Edition. Entebbe, Uganda: Department of Lands and  
516 Surveys
- Herholdt JJ, Kemp AC. 1997. Breeding status and ecology of the Martial Eagle in the Kalahari Gemsbok  
518 National Park, South Africa. *Ostrich* 68(2–4): 80–85. DOI: 10.1080/00306525.1997.9639717
- Herremans M, Herremans-Tonnoeyr D. 2000. Land use and the conservation status of raptors in  
520 Botswana. *Biological Conservation* 94: 31–41.

- 522 Howells WW, Hustler K. 1984. The status and breeding success of eagles and vultures in the Hwange  
National Park, Zimbabwe. In: Mendelsohn, JM, Sapsford, CW. (eds.), *Proceedings of the Second  
Symposium on African Predatory Birds*. Durban: Natal Bird Club. pp 99–107.
- 524 Hustler K, Howells WW. 1987. Breeding periodicity, productivity and conservation of the Martial Eagle.  
*Ostrich* 58(3): 135–138.
- 526 Hustler K, Howells WW. 1988. The effect of primary production on breeding success and habitat  
selection in the African Hawk-eagle. *The Condor* 90: 583–587.
- 528 Jenkins AR, Smallie JJ, Diamond M. 2010. Avian collisions with power lines: a global review of causes  
and mitigation with a South African perspective. *Bird Conservation International* 20: 263–278.
- 530 Kemp AC, Kirwan GM. 2018. Palm-nut Vulture (*Gypohierax angolensis*). In: del Hoyo J, Elliott A, Sargatal  
J, Christie DA, de Juana E. (eds.). *Handbook of the Birds of the World Alive*. Lynx Edicions, Barcelona.  
532 (retrieved from <https://www.hbw.com/node/52991> on 21 February 2018)
- Marques TA, Thomas L, Fancy SG, Buckland ST. 2007. Improving estimates of bird density using  
534 multiple covariate distance sampling. *The Auk* 124: 1229–1243.
- McKean S, Mander M, Diederichs N, Ntuli L, Mavundla K, Williams V, Wakelin J. 2013. The impact of  
536 traditional use on vultures in South Africa. *Vulture News* 65: 15–36.
- Monadjem A, Garcelon DK. 2005. Nesting distribution of vultures in relation to land use in Swaziland.  
538 *Biodiversity and Conservation* 14: 2079–2093. DOI 10.1007/s10531-004-4358-9
- Monadjem A, Botha A, Murn C. 2012. Survival of the African white-backed vulture *Gyps africanus* in  
540 north-eastern South Africa. *African Journal of Ecology* 51: 87–93.
- Mundy P, Butchart D, Ledger J, Piper S. 1992. *The Vultures of Africa*. South Africa: Acorn Books
- 542 Murn C, Anderson MD, Anthony A. 2002. Aerial survey of African white-backed vulture colonies around  
Kimberley, Northern Cape and Free State provinces, South Africa. *South African Journal of Wildlife  
544 Research* 32(2): 145–152.
- Murn C, Combrink L, Ronaldson GS, Thompson C, Botha A. 2013. Population estimates of three vulture  
546 species in Kruger National Park, South Africa. *Ostrich: Journal of African Ornithology*.  
DOI:10.2989/00306525.2012.757253
- 548 Murn C, Mundy P, Virani MZ, Borello WD, Holloway GJ, Thiollay J-M. 2016. Using Africa's protected area  
network to estimate the global population of a threatened and declining species: a case study of the  
550 Critically Endangered White-headed Vulture *Trigonoceps occipitalis*. *Ecology and Evolution* doi:  
10.1002/ece3.1931
- 552 Murn C, Botha A, Wilson B. 2017. The changing sizes of critically endangered White-backed Vulture  
breeding colonies around Kimberley, South Africa. *African Journal of Wildlife Research* 47(2): 144–  
554 148
- Ogada DL. 2014. The power of poison: pesticide poisoning of Africa's wildlife. *Annals of the New York  
556 Academy of Sciences* 1322: 1–20.
- Ogada D, Shaw P, Beyers RL, Buij R, Murn C, Thiollay JM, Beale CM, Holdo RM, Pomeroy D, Baker N,  
558 Krüger SC, Botha A, Virani MZ, Monadjem A, Sinclair ARE. 2015. Another Continental Vulture Crisis:  
Africa's Vultures Collapsing toward Extinction. *Conservation Letters* 9: 89–97. DOI:  
560 10.1111/conl.12182
- Ogada D, Botha A, Shaw P. 2016. Ivory poachers and poison; drivers of Africa's declining vulture  
562 populations. *Oryx* 50(4): 593–596. DOI: <https://doi.org/10.1017/S0030605315001209>
- Ong CD. 2000. *The home range of the Martial Eagle Polemaetus bellicosus determined with the use of  
564 radio telemetry*. University of Leicester
- Otieno PO, Lalah JO, Virani M, Jondiko IO, Schramm K-W. 2010. Carbofuran and its toxic metabolites  
566 provide forensic evidence for furadan exposure in vultures (*Gyps africanus*) in Kenya. *Bulletin of  
Environmental Contamination and Toxicology* 84: 536–544.

- 568 Pennycuik CJ. 1976. Breeding of the lappet-faced and white-headed vultures (*Torgos tracheliotus*  
 570 Forster and *Trigonoceps occis* Burchell) on the Serengeti Plains, Tanzania. *East African Wildlife*  
*Journal* 14: 67–84
- Pomeroy D. 2008. Raptor migrations in western Uganda – spring 2007 and 2008. *Gabar* 19: 68–70.
- 572 Pomeroy D, Shaw P, Opige M, Kaphu G, Ogada DI, Virani MZ. 2014. Vulture populations in Uganda: using  
 road survey data to measure both densities and encounter rates within protected and unprotected  
 574 areas. *Bird Conservation International* 25(4): 399–414. DOI: 10.1017/S095927091400029X
- R Development Core Team. 2016. *R: a language and environment for statistical computing*. R Foundation  
 576 for Statistical Computing, Vienna
- Smeenk C. 1974. Comparative ecological studies of some East African birds of prey. *Ardea* 62: 1–97
- 578 Snelling JC. 1970. Some information obtained from marking large raptors in the Kruger National Park,  
 Republic of South Africa. *Ostrich* supplement. 8: 415–427
- 580 Steyn P. 1975. Observations on the African Hawk-Eagle. *Ostrich* 46: 87–105
- Tarboton W. 2001. *A Guide to the Nests and Eggs of Southern African Birds*. Struik Publishers Ltd, Cape  
 582 Town.
- Thiollay JM. 2006a. Severe decline of large birds in the Northern Sahel of West Africa: a long-term  
 584 assessment. *Bird Conservation International* 16: 353–365.
- Thiollay JM. 2006b. The decline of raptors in West Africa: long-term assessment and the role of  
 586 protected areas. *Ibis* 148: 240–254.
- Thiollay JM. 2006c. Large bird declines with increasing human pressure in savanna woodland (Burkina  
 588 Faso). *Biodiversity & Conservation* 15: 2085–2108.
- Thiollay JM. 2007. Raptor declines in West Africa: comparisons between protected, buffer and  
 590 cultivated areas. *Oryx* 41(3): 322–329.
- Thomas L, Buckland ST, Rexstad EA, Laake JL, Strindberg S, Hedley SL, Bishop JRB, Marques TA,  
 592 Burnham KP. 2010. Distance software: design and analysis of distance sampling surveys for  
 estimating population size. *Journal of Applied Ecology* 47: 5–14.
- 594 van Eeden R, Whitfield DP, Botha A, Amar A. 2017. Ranging behaviour and habitat preferences of the  
 Martial Eagle: Implications for the conservation of a declining apex predator. *PLoS ONE* 12(3):  
 596 e0173956. <https://doi.org/10.1371/journal.pone.0173956>
- Virani MZ, Kirui P, Monadjem A, Thomsett S, Githiru M. 2010. Nesting status of African White-backed  
 598 Vultures *Gyps africanus* in the Masai Mara National Reserve, Kenya. *Ostrich* 81: 205–209.
- Virani MZ, Kendall C, Njoroge P, Thomsett S. 2011. Major declines in the abundance of vultures and  
 600 other scavenging raptors in and around the Masai Mara ecosystem, Kenya. *Biological Conservation*  
 144: 746–752
- 602 Watson RT. 1990a. Population dynamics of the Bateleur in the Kruger National Park. *Ostrich* 61: 5–12.
- Watson RT. 1990b. Breeding biology of the Bateleur. *Ostrich* 61: 13–23.
- 604 WCS & eCountability. 2016. *Land cover analysis of Langdale-Brown et al in comparing vegetation*  
*classification and land use change*. Wildlife Conservation Society, Kampala, Uganda.
- 606 World Bank. 2017a. [https://data.worldbank.org/indicator/SP.POP.GROW?name\\_desc=false](https://data.worldbank.org/indicator/SP.POP.GROW?name_desc=false)  
 Downloaded 05/09/2017
- 608 World Bank. 2017b. <https://data.worldbank.org/region/sub-saharan-africa>. Downloaded 18/12/2017
- World Bank. 2017c. <https://data.worldbank.org/country/uganda>. Downloaded 18/12/2017
- 610 Zimmerman DA, Turner DA, Pearson DJ. 1996. *Birds of Kenya and Northern Tanzania*. C. Helm, A&C  
 Black, London, UK.

612

**Table 1:** Density estimates (birds 100 km<sup>-2</sup>) in relation to land use. Figures are presented only for species-land use combinations yielding sufficient encounters with which to estimate density using Distance sampling

614

Species	Land use <sup>1</sup>	<i>n</i> <sup>2</sup>	Model <sup>3</sup>	Detection function	Adjustments <sup>4</sup>	ESW <sup>5</sup>	Density	CLs
African Hawk-eagle <i>Aquila spilogaster</i>	Savanna	16	CDS	Uniform		500	0.29	(0.16–0.54)
Steppe Eagle <i>A. nipalensis</i>	Savanna	72	MCDS	Half normal		193	3.40	(1.27–9.13)
Tawny Eagle <i>A. rapax</i>	Pastoral	12	MCDS	Half normal		102	2.51	(0.55–11.32)
Black-chested Snake-eagle <i>Circaetus pectoralis</i>	Savanna	135	MCDS	Half normal		226	5.46	(3.67–8.13)
Brown Snake-eagle <i>C. cinereus</i>	Pastoral	20	MCDS	Half normal		243	1.76	(0.92–3.36)
	Savanna	34	CDS	Uniform	Cos. 1	291	1.07	(0.63–1.80)
	Agricultural	27	CDS	Half normal		241	1.75	(0.96–3.19)
	Savanna	90	CDS	Half normal		206	3.99	(2.87–5.55)
	Pastoral	30	CDS	Uniform	Cos. 1	251	2.55	(1.47–4.42)
Short-toed Snake-eagle <i>C. gallicus</i>	Savanna	18	CDS	Half normal		294	0.56	(0.25–1.25)
Western Banded Snake-eagle <i>C. cinerascens</i>	Savanna	13	MCDS	Half normal		142	0.84	(0.38–1.85)
	Pastoral	12	MCDS	Half normal		181	1.41	(0.62–3.23)
African Fish-eagle <i>Haliaeetus vocifer</i>	Savanna	135	MCDS	Half normal		199	6.19	(4.39–8.72)
Wahlberg's Eagle <i>H. wahlbergi</i>	Agricultural	34	MCDS	Half normal		176	3.01	(1.63–5.56)
	Savanna	29	CDS	Uniform	Cos. 1	256	1.04	(0.64–1.68)
	Pastoral	36	MCDS	Half normal		193	3.97	(1.80–8.76)
Long-crested Eagle <i>Lophaetus occipitalis</i>	Agricultural	94	MCDS	Half normal		124	11.56	(8.37–15.96)
	Savanna	151	MCDS	Half normal		164	8.42	(6.03–11.76)
	Pastoral	92	MCDS	Half normal		135	10.15	(7.23–14.23)
Martial Eagle <i>Polemaetus bellicosus</i>	Savanna	35	MCDS	Half normal		189	1.70	(1.06–2.71)
Bateleur <i>Terathopius ecaudatus</i>	Savanna	415	MCDS	Half normal	Cos. 2	197	19.29	(15.27–24.35)
Common Kestrel <i>Falco tinnunculus</i>	Pastoral	33	MCDS	Half normal	Cos. 2	215	3.28	(1.48–7.24)
	Savanna	15	MCDS	Half normal		302	0.45	(0.17–1.22)
Grey Kestrel <i>F. ardosiaceus</i>	Agricultural	29	MCDS	Half normal		107	4.24	(2.39–7.51)
	Savanna	106	MCDS	Half normal		113	8.54	(5.82–12.52)
	Pastoral	23	MCDS	Half normal		73	6.69	(3.60–12.44)
Red-necked Falcon <i>F. ruficollis</i>	Savanna	20	MCDS	Half normal		152	1.19	(0.56–2.54)
Montagu's Harrier <i>Circus pygargus</i>	Savanna	34	MCDS	Half normal		147	2.11	(1.14–3.91)
	Pastoral	18	MCDS	Half normal		206	1.87	(0.75–4.65)
Pallid Harrier <i>C. macrourus</i>	Savanna	19	MCDS	Half normal		155	1.12	(0.50–2.49)
	Pastoral	9	MCDS	Half normal		334	0.58	(0.20–1.66)
Western Marsh-harrier <i>C. aeruginosus</i>	Savanna	24	MCDS	Half normal		216	1.02	(0.58–1.76)
Shikra <i>Accipiter badius</i>	Agricultural	22	CDS	Uniform	Cos. 1	108	3.19	(1.64–6.21)
	Savanna	19	CDS	Uniform	Cos. 1	127	1.37	(0.67–2.80)
	Pastoral	20	CDS	Uniform	Cos. 1	103	4.15	(2.42–7.09)

Species	Land use <sup>1</sup>	<i>n</i> <sup>2</sup>	Model <sup>3</sup>	Detection function	Adjustments <sup>4</sup>	ESW <sup>5</sup>	Density	CLs
Grasshopper Buzzard	Agricultural	8	MCDS	Half normal		163	0.76	(0.23–2.50)
<i>Butastur rufipennis</i>	Savanna	852	MCDS	Half normal		136	57.10	(41.73–78.12)
	Pastoral	14	MCDS	Half normal		171	1.75	(0.73–4.18)
Eurasian Buzzard	Savanna	26	MCDS	Half normal		137	1.74	(0.95–3.17)
<i>Buteo buteo</i>								
Lizard Buzzard	Agricultural	50	CDS	Uniform	S. poly. 2	88	8.88	(5.58–14.20)
<i>Kaupifalco monogrammicus</i>	Savanna	29	CDS	Uniform	S. poly. 2	92	2.88	(1.72–4.82)
	Pastoral	27	CDS	Uniform	S. poly. 2	121	4.75	(2.72–8.27)
Dark Chanting-goshawk	Agricultural	24	MCDS	Half normal		239	1.57	(0.64–3.87)
<i>Melierax metabates</i>	Savanna	50	MCDS	Half normal		143	3.19	(2.09–4.87)
	Pastoral	49	MCDS	Half normal		172	6.09	(3.03–12.24)
European Honey-buzzard	Savanna	126	MCDS	Half normal		150	7.66	(5.12–11.44)
<i>Pernis apivorus</i>	Pastoral	25	MCDS	Half normal		155	3.25	(1.58–7.54)
African Harrier-hawk	Agricultural	13	MCDS	Half normal		210	0.97	(0.41–2.28)
<i>Polyboroides typus</i>	Savanna	35	MCDS	Half normal		159	2.01	(1.24–3.26)
Black-winged Kite	Agricultural	35	MCDS	Half normal		92	5.92	(3.28–10.68)
<i>Elanus caeruleus</i>	Savanna	26	MCDS	Half normal		80	2.98	(1.34–6.61)
	Pastoral	61	MCDS	Half normal		160	8.16	(3.97–16.76)
Black Kite	Agricultural	1 233	MCDS	Half normal		149	129.45	(91.12–183.70)
<i>Milvus migrans</i>	Savanna	477	MCDS	Half normal	Cos. 2	179	24.31	(16.65–35.50)
	Pastoral	518	MCDS	Half normal		171	64.60	(53.31–78.29)
Osprey	Savanna	15	MCDS	Half normal		302	0.45	(0.20–1.03)
<i>Pandion haliaetus</i>								
Palm-nut Vulture	Savanna	72	CDS	Uniform	S. poly. 2	96	6.86	(4.19–11.23)
<i>Gypohierax angolensis</i>								
White-backed Vulture	Savanna	445	MCDS	Half normal		271	15.04	(10.12–22.33)
<i>Gyps africanus</i>								
<i>Gyps</i> spp.	Savanna	585	MCDS	Half normal		271	19.74	(13.29–29.33)
Rüppell's Vulture	Savanna	139	MCDS	Half normal		271	4.71	(3.17–6.99)
<i>G. rueppelli</i>								
Hooded Vulture	Agricultural	76	CDS	Half normal		112	10.59	(4.91–22.81)
<i>Necrosyrtes monachus</i>	Savanna	25	CDS	Uniform		500	0.46	(0.17–1.20)
	Pastoral	32	CDS	Half normal		116	5.86	(2.54–13.55)
Lappet-faced Vulture	Savanna	48	CDS	Half normal		200	2.19	(1.21–3.94)
<i>Torgos tracheliotos</i>								
White-headed Vulture	Savanna	26	MCDS	Half normal		227	1.05	(0.56–1.96)
<i>Trigonoceps occipitalis</i>								

616 <sup>1</sup> Land use types: savanna transects followed unpaved tracks through open- or wooded grassland within PAs; pastoral transects were on public roads through vegetation that was often superficially similar to that of savanna, but lay outside of PAs; agricultural transects also followed public roads, but through land supporting crops. See Methods for further details

618 <sup>2</sup> Number of encounters recorded in this land use type

<sup>3</sup> Model type. CDS: Conventional Distance Sampling. MCDS: Multiple Covariate Distance Sampling

620 <sup>4</sup> Adjustments: Cosine, Simple Polynomial

<sup>5</sup> Effective strip width (m)

622

624

626 **Table 2:** Raptor species recorded only or much more frequently in protected savanna than in pastoral or agricultural land. The combined number of individuals present in conservation areas (CAs) has been estimated from the species' population density in savanna, and the total area of savanna within the CA network

628

Species	Dependency score <sup>1</sup>	Global threat status <sup>2</sup>	Migratory status <sup>3</sup>	Individuals in CA network	Confidence limits
African Hawk-eagle	1	lc	R	65	(35–121)
Black-chested Snake-eagle	1	lc	R	238	(141–401)
Short-toed Snake-eagle	1	lc	PM	125	(55–278)
Martial Eagle	1	VU	R	379	(237–604)
Bateleur	2	nt	R	4 302	(3 406–5 433)
Common Kestrel	1	lc	RPM	101	(37–272)
Red-necked Falcon	1	lc	R	267	(126–565)
Western Marsh-harrier	1	lc	PM	227	(130–393)
Grasshopper Buzzard	2	lc	AM	12 737	(9 308–17 427)
Eurasian Buzzard	1	lc	PM	388	(212–708)
Osprey	1	lc	PM	101	(44–230)
Palm-nut Vulture	1	lc	R	1 530	(934–2 505)
White-backed Vulture	1	CR	R	3 354	(2 257–4 982)
Rüppell's Vulture	1	CR	R	1 050	(707–1 560)
Lappet-faced Vulture	1	EN	R	489	(271–880)
White-headed Vulture	1	CR	R	233	(124–436)

630 <sup>1</sup> Dependency on protected savanna was scored as: 1. species only recorded in savanna, or encounters in pastoral and agricultural land too few to support density estimation in these land use types; 2. highest density attained in pastoral or agricultural land was  $\leq 25\%$  of density in savanna. Species whose density in pastoral or agricultural land was  $>25\%$  of their density in savanna have been excluded

632

<sup>2</sup> Global threat status: lc least concern; nt near threatened; VU Vulnerable; EN Endangered; CR Critically Endangered. Source: BirdLife International (2018)

634

<sup>3</sup> Migratory status in Uganda: AM Afrotropical migrant; R resident; RPM both resident individuals and Palearctic migrants present; PM Palearctic migrant

636

638

**Table 3:** Estimates of the number of adult pairs present in Uganda's conservation areas, for resident raptor species highly dependent on savanna habitats

Species	Proportion assumed adult <sup>1</sup>	Source <sup>2</sup>	Area pair <sup>-1</sup> (km <sup>2</sup> )	Total pairs, assuming:		Occupied CAs <sup>4</sup>	Number of CAs likely to support <sup>4</sup> :			% pairs in five largest CAs <sup>4</sup>
				75% adults paired	100% adults paired		<5 pairs	5–20 pairs	>20 pairs	
African Hawk-eagle	0.65	1	[ <sup>3</sup> ]	3	5	2	2	0	0	100%
Black-chested Snake-eagle	0.65	1	288–384	30	42	5	3	2	0	98–100%
Martial Eagle	0.65	1	181–241	53	75	7	2	5	0	93–96%
Bateleur	0.65	2,3	16–21	862	1,191	54	39	8	7	73–75%
Red-necked Falcon	0.65	1	257–342	34	49	6	3	2	0	96–97%
Palm-nut Vulture	0.55	2,4	53–71	222	307	15	8	2	5	84–86%
White-backed Vulture	0.80	2,5	17–22	828	1,145	54	39	8	7	73–76%
Rüppell's Vulture	0.80	6	53–71	222	307	15	8	2	5	84–86%
Lappet-faced Vulture	0.66	7	138–184	74	105	9	4	4	1	91–93%
White-headed Vulture	0.54	8	354–472	22	32	5	3	2	0	100%

640

<sup>1</sup> The proportion of individuals assumed to be adult, and hence of breeding age

642

<sup>2</sup> Sources used for estimating the proportion of adult birds in the population. 1. Mean of estimates for five species for which published sources were available; 2. Brown et al. (1997); 3. Watson (1990a); 4. Kemp and Kirwan (2018); 5. Anderson (2000), Murn et al. (2002), Monadjem et al. (2012). 6. Assumed to be as for W-b Vulture;

644

7. Mundy et al. (1992); 8. Murn et al. (2016)

<sup>3</sup> Density extremely low; estimated area required pair<sup>-1</sup> likely to be misleading

646

<sup>4</sup> Assuming 75% of adults are in pairs

648



**Table 4:** The influence of land use and tree cover on: the likelihood of a species being encountered on a given transect (Binomial models); and the number of individuals recorded (Poisson models). The latter were restricted to surveys of transects in which at least one individual of the target species was seen. For effect sizes, see Supplementary Table S2. Globally threatened and near-threatened species are shown in bold and bold-italics, respectively

Explanatory variable	Model type	Species' presence or abundance positively associated with:			
		Savanna	Savanna–Pastoral	Pastoral	Pastoral–Agricultural
Land use	Binomial (presence/ absence)	<b>Steppe Eagle**</b>	Brown Snake-eagle*	Tawny Eagle+	Wahlberg's Eagle*
		African Fish-eagle***	Montagu's Harrier*	W. Banded Snake-eagle+	Long-crested Eagle**
		<b>Martial Eagle***</b>	Eurasian Buzzard+	Dark Chanting-goshawk+	Shikra**
		<b>Bateleur***</b>			Black-winged Kite+
		Red-necked Falcon*			Black Kite***
		Western Marsh-harrier+			<b>Hooded Vulture**</b>
		Grasshopper Buzzard**			
		European Honey-buzzard**			
		<b>White-backed Vulture***</b>			
		<b>Rüppell's Vulture*</b>			
		<b>White-headed Vulture**</b>			
Land use	Poisson (abundance)	<b>Steppe Eagle**</b>	-	<b>White-headed Vulture**</b>	<b>Hooded Vulture**</b>
		Tawny Eagle*			
		<b>Bateleur+</b>			
		Grey Kestrel***			
Feature	Model type	Open grassland–light tree cover		Heavy tree cover–closed canopy	
Tree cover	Binomial (presence/ absence)	Red-necked Falcon+		Wahlberg's Eagle**	
		Montagu's Harrier*		<b>Bateleur*</b>	
		Western Marsh-harrier**			
		Black-winged Kite+			
		<b>Rüppell's Vulture*</b>			
Tree cover	Poisson (abundance)	<b>Steppe Eagle***</b>		<b>Rüppell's Vulture**</b>	
		Grey Kestrel*		<b>Hooded Vulture**</b>	
		Grasshopper Buzzard**			
		European Honey-buzzard*			

\*\*\*  $p < 0.001$ ; \*\*  $p < 0.01$ ; \*  $p < 0.05$ ; +  $p < 0.10$

## Figure legends

**Figure 1:** Routes surveyed during annual road counts, 2008–2015. Black lines indicate public roads surveyed through farmland, and unpaved tracks surveyed within four National Parks. Place names are as follows: ET Entebbe; KP Kampala; KVNP Kidepo Valley NP; LMNP Lake Mburo NP; MBNP Mbarara NP; MFNP Murchison Falls NP; MR Moroto; QENP Queen Elizabeth NP; SR Soroti

**Figure 2:** The effects of habitat fragmentation on population estimates for 10 resident, savanna-dependent species. Population sizes were estimated in two ways: A. by multiplying the combined area of protected savanna in all conservation areas (CAs) by the species' density in that habitat; B. by multiplying the area of protected savanna in each CA by the species' density, but excluding CAs with too little savanna to support at least the species in question. Population estimates were 41% lower (median; quartiles: 28–48%) when sites with insufficient savanna were excluded (B), than when all protected savanna was treated as a single block (A)

Fig 1

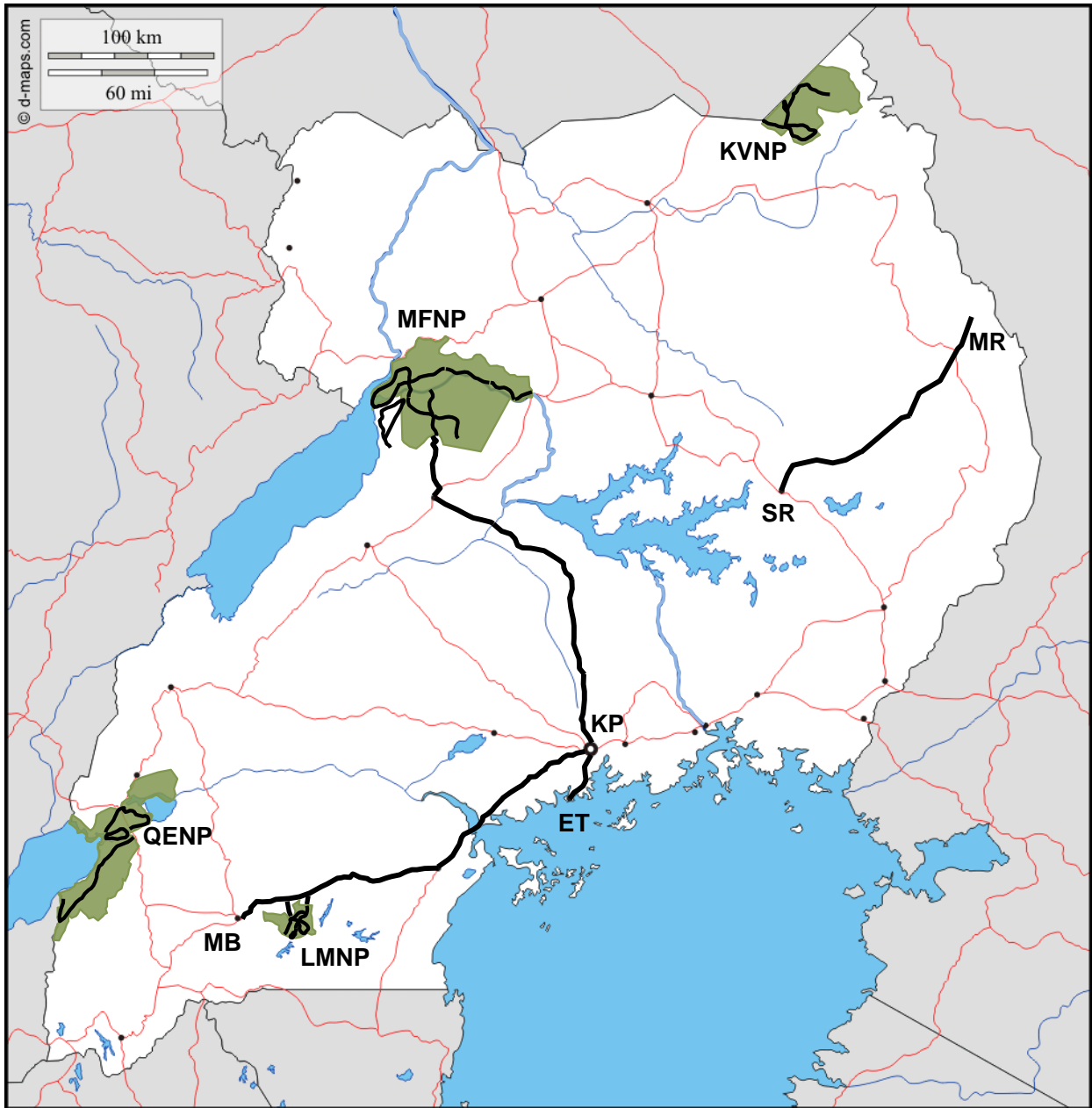


Fig. 2

