



Late Quaternary glaciation of the Hebrides sector of the continental shelf: cosmogenic nuclide dating of glacial events on the St Kilda archipelago

Journal:	<i>Boreas</i>
Manuscript ID	BOR-087-2016.R1
Manuscript Type:	Original Article
Date Submitted by the Author:	n/a
Complete List of Authors:	Ballantyne, Colin; University of St Andrews, School of Geography and Sustainable Development Fabel, Derek; Scottish Universities Environmental Research Centre Gheorghiu, Delia; Scottish Universities Environmental Research Centre, NERC-CIAF Rodes, Ángel; Scottish Universities Environmental Research Centre, NERC-CIAF Shanks, Richard; Scottish Universities Environmental Research Centre Xu, Sheng; Scottish Universities Environmental Research Centre
Keywords:	Last British-Irish Ice Sheet, Glacial history, Hebrides Shelf, Shelf-edge moraine banks, Last Glacial Maximum, Cosmogenic nuclide dating

1
2
3 **Late Quaternary glaciation in the Hebrides sector of the continental shelf:**
4 **cosmogenic nuclide dating of glacial events on the St Kilda archipelago.**
5
6

7 COLIN K. BALLANTYNE, DEREK FABEL, DELIA GHEORGHIU, ÁNGEL RODÉS,
8 RICHARD SHANKS AND SHENG XU
9

10
11 **Abstract**
12

13 The St Kilda archipelago lies ~65 km west of the Outer Hebrides and ~60 km east of the
14 Atlantic shelf break, and represents a key site for testing the assertion that during the Last
15 Local Glacial Maximum (LLGM; ~27 ka) the British-Irish Ice Sheet (BIIS) extended to near
16 the shelf edge in all sectors. Two consistent cosmogenic ^{36}Cl exposure ages averaging (\geq)
17 81.6 ± 7.8 ka for perched boulders at 290 m altitude demonstrate that the last ice sheet failed to
18 over-run high ground on the largest island, Hirta. ^{36}Cl and ^{10}Be exposure ages for glacially-
19 emplaced boulders on low ground indicate deposition by small, locally-nourished glaciers that
20 last occupied a north-facing valley (Gleann Mòr) at $\sim 30.9 \pm 3.2$ ka, prior to extension of the
21 last ice sheet to the outer shelf, and a south-facing valley (Village Bay) at $\sim 19.2 \pm 2.3$ ka,
22 several millennia after the LLGM. Our dating evidence is consistent with previous
23 interpretations of lithostratigraphic, seismostratigraphic and geomorphological evidence and
24 confirms that the last ice sheet failed to encroach on St Kilda. A simple ice-flow model
25 demonstrates that even if thin, low-gradient ice lobes encircled the archipelago during the
26 LLGM, the ice margin can only have reached the outermost moraine banks, ~40 km west of St
27 Kilda, under extremely low (< 2 kPa) driving stresses, implying either surge-like transient
28 streaming behaviour at the ice-sheet margin or that the moraine banks relate to an earlier, more
29 extensive ice sheet. The final glaciation of the Village Bay area at $\sim 19.2 \pm 2.3$ ka was out of
30 phase with the behaviour of the BIIS, which was undergoing net retreat during this period.
31
32
33
34
35
36
37
38
39
40
41
42

43
44 *Colin K. Ballantyne (ckb@st-andrews.ac.uk), School of Geography and Sustainable*
45 *Development, University of St Andrews, Fife KY16 9AL, UK; Derek Fabel, Scottish*
46 *Universities Environmental Research Centre, East Kilbride G75 0QF, UK; Delia Gheorghiu*
47 *and Ángel Rodés, NERC-CIAF, Scottish Universities Environmental Research Centre, East*
48 *Kilbride G75 0QF, UK; Richard Shanks and Sheng Xu, Scottish Universities Environmental*
49 *Research Centre, East Kilbride G75 0QF, UK*
50
51
52
53
54
55
56
57
58
59
60

1
2
3 The past decade has witnessed radical reassessment of the dimensions and chronology of the
4 last (Late Devensian) British-Irish Ice Sheet, which during the last local glacial maximum
5 (LLGM) is now generally accepted to have overtopped all mountain summits in Scotland and
6 Ireland (Fabel *et al.* 2012; Ballantyne & Stone 2015) and to have been confluent with the
7 Fennoscandian Ice Sheet in the North Sea Basin (e.g. Carr *et al.* 2006; Graham *et al.* 2007,
8 2010; Sejrup *et al.* 2009, 2015, 2016). To the west of the British Isles, bathymetric and
9 seismostratigraphic data have revealed the presence of moraine banks that extend along much
10 of the Atlantic shelf edge from SW Ireland to Shetland. Several authors have concluded that
11 these moraines were deposited at grounded ice margins during the LLGM (Bradwell *et al.*
12 2008; Dunlop *et al.* 2010; Clark *et al.* 2012; Ó Cofaigh *et al.* 2012; Peters *et al.* 2015),
13 prompting speculation that westwards expansion of grounded ice was halted by increased
14 water depth. Attribution of all shelf-edge moraine banks on the Hebrides Shelf NW of Scotland
15 to deposition by the last ice sheet, however, rests entirely on interpretation of seabed imagery.
16 However, seismostratigraphic research by Stoker & Holmes (1991) has demonstrated that the
17 shelf-edge moraines on the northern Hebrides Shelf pre-date those on the West Shetland Shelf,
18 being separated by an angular stratigraphic discordance. Though the time gap represented by
19 this discordance is unknown, they postulated that the two sets of moraines were deposited
20 during two separate episodes of widespread ice-sheet glaciation. More recently, Bradwell &
21 Stoker (2015a) have suggested that the shelf-edge moraines of LLGM age on the West
22 Shetland Shelf are correlated with mid-shelf moraines west of the Outer Hebrides, supporting a
23 long-held view that the last ice sheet failed to reach the edge of the Hebridean shelf (Stoker *et al.*
24 1993, 1994; Stoker, 1995, 2013; Sejrup *et al.* 2005), and implying that moraines on the
25 outer Hebridean shelf were deposited by a pre-Late Devensian ice sheet.
26
27
28
29
30
31
32
33
34
35
36
37
38
39
40
41

42 Extension of the last ice sheet to the Atlantic shelf break is nevertheless supported by
43 numerical ice-sheet modelling experiments driven by proxy climate data derived from the
44 Greenland ice core stable isotope record (Boulton & Hagdorn 2006; Hubbard *et al.* 2009) and
45 by studies of ice-rafted detritus (IRD) in cores obtained from large shelf-edge trough-mouth
46 fans and the seafloor adjacent to and beyond the shelf edge (Kroon *et al.* 2000; Knutz *et al.*
47 2001; Wilson & Austin 2002; Wilson *et al.* 2002; Peck *et al.* 2007; Scourse *et al.* 2009). These
48 trough-mouth fans represent the depocentres of large, quasi-stable ice streams and take the
49 form of massive wedges of stacked glacial debris-flow diamicts interbedded with
50 hemipelagic sediments. The former have been inferred to represent subglacial sediment supply
51 when the ice margin terminated at or near the shelf break, the latter to represent marine
52 deposition when the ice margin lay closer to the present coastline. Adjacent to the shelf west of
53
54
55
56
57
58
59
60

1
2
3
4
5
6
7
8
9
10
11
12
13
14
15
16
17
18
19
20
21
22
23
24
Scotland are two prominent shelf-edge fans (Fig. 1): the Sula Sgeir Fan, which received sediment from the Minch Ice Stream (Stoker & Bradwell 2005; Bradwell *et al.* 2007; Bradwell & Stoker 2015b, 2016; Owen & Long 2016), and the Barra-Donegal Fan, which acted as a depocentre for sediment from converging ice streams sourced from western Scotland (the Hebrides Ice Stream) and Ireland (Dunlop *et al.* 2010; Howe *et al.* 2012; Ó Cofaigh *et al.* 2012; Dove *et al.* 2015; Ballantyne & Ó Cofaigh 2017). During the LLGM the Outer Hebrides constituted an independent centre of ice dispersal that was confluent with mainland ice in the Minches and deflected westward-moving ice from the Scottish mainland both northwards towards the Minch Ice Stream and southwards towards the Hebrides Ice Stream (Flinn, 1978; Von Weymarn 1979; Peacock, 1984, 1991; Ballantyne & McCarroll, 1995; Ballantyne & Hallam 2001; Stone & Ballantyne 2006). This pattern of ice movement implies that during the LLGM the shelf west of the Outer Hebrides was occupied by ice flowing from the Outer Hebrides rather than ice from the Scottish mainland (Selby, 1989; Fig. 1).

25
26
27
28
29
30
31
32
33
34
35
36
37
38
39
40
41
42
43
44
45
46
The timing of ice-sheet extension to near the shelf edge is indirectly dated with reference to the dated flux of IRD in cores recovered from the NE Atlantic deep-sea continental slope and from patterns of sedimentation on the Barra-Donegal Fan (Scourse *et al.* 2009). The latter are recorded in giant piston core MD95-2006, a 30 m long sediment core recovered from the distal section of the fan (Wilson & Austin 2002; Wilson *et al.* 2002; Peters *et al.*, 2008). This core records replacement of hemipelagic sedimentation by IRD linked to turbiditic sedimentation due to ice-sheet expansion after ~29 ka, and Scourse *et al.* (2009) attributed turbidity currents on the distal fan to arrival of the ice-sheet margin at the shelf edge at ~27 ka. There is evidence, moreover, for phased expansion of the ice sheet across the shelf such that the ice margin west of Ireland reached the shelf edge a few millennia later (Scourse *et al.* 2009; Peters *et al.* 2015; Ballantyne & Ó Cofaigh 2017). Even within the Hebridean sector of the shelf it is likely that the arrival of the ice margin on the outer shelf was diachronous, with ice streams arriving at or near the shelf edge before zones of slower ice flow.

47
48
49
50
51
52
53
54
55
56
57
58
59
60
Confirmation that the last ice sheet reached the outer shelf NW of Scotland has been provided by cosmogenic ¹⁰Be ages obtained for large glacially-deposited boulders on the island of North Rona, ~70 km NW from the Scottish mainland and ~45 km from the shelf edge (Everest *et al.* 2013; Fig. 1). These yielded reported ages that average ~25 ka, apparently consistent with the timing of the retreat of the ice sheet margin from its shelf-edge maximum. Another key site for testing the proposition that the last ice sheet reached the shelf break is the St Kilda archipelago, which lies 65 km WNW of North Uist in the Outer Hebrides and ~60 km east of the shelf edge.

1
2
3 The location of St Kilda is interesting as it lies between tracks of the Minch and Hebrides Ice
4 Streams in the area of the Hebrides Shelf that was fed by ice from the Outer Hebrides (Fig. 1).
5 Studies of the Quaternary geomorphology and lithostratigraphy of St Kilda, moreover, have
6 suggested that the archipelago may not have been over-run by the last ice sheet, but supported
7 only small, locally-nourished glaciers during the LLGM (Sutherland *et al.* 1984; Hiemstra *et*
8 *al.* 2015). The aim of the research reported here is to employ cosmogenic ^{10}Be and ^{36}Cl dating
9 of boulders on St Kilda to determine whether or not the last ice sheet over-ran the archipelago
10 and the timing of local glaciation, and to explore the wider implications of the results.
11
12
13
14
15

16 The St Kilda archipelago

17 *Geology and topography*

18
19
20 The St Kilda archipelago (57°49'N; 08°35'W; Fig. 1) comprises four small islands and outlying
21 sea stacks that represent the terrestrial remnants of a roughly circular Palaeogene igneous
22 complex, ~14 km in diameter. Much of the igneous complex forms a shallow platform 40–
23 80 m below sea level that rises, locally steeply, above a deeper platform developed across the
24 adjacent Lewisian Gneiss at ~120–130 m below sea level (Harding *et al.*, 1984; Sutherland,
25 1984). As the highest point of the archipelago is at 426 m OD, the igneous complex represents
26 a prominent area of upland, rising up to 550 m above the adjacent sea floor. Of the four islands
27 (Hirta, Soay, Dùn and Boreray), only the largest, Hirta (~6 km²), is readily accessible. Hirta
28 comprises two small valleys, Gleann Mòr in the northwest and Village Bay in the southeast,
29 separated by a 239 m high col (Fig. 2). The remainder of the island consists of rolling hills that
30 culminate in Mullach Bi (358 m), Mullach Mòr (361 m), Conachair (426 m) and Oisebhal
31 (290 m), all of which are flanked on their seaward sides by steep cliffs. The island is underlain
32 by a range of intrusive rocks, principally gabbros, dolerites, gabbro-dolerite breccias, granites,
33 granite-dolerite hybrids and granophyres (Harding *et al.*, 1984; Fig. 3).
34
35
36
37
38
39
40
41
42
43
44

45 *Quaternary glacial history*

46
47 Early studies of the Quaternary landforms and deposits of Hirta produced conflicting
48 interpretations. Cockburn (1935) reported the presence of exotic mineral grains in a soil sample
49 and the presence of a few rounded gneiss boulders below 30 m OD in the Village Bay area; he
50 inferred that these boulders may represent erratics transported westward by a former ice sheet,
51 but could not exclude the possibility that these represent discarded ship's ballast. By contrast,
52 Wager (1953) reported several moraines in the Village Bay area and maintained that Hirta had
53 supported only local glaciers. Research by Harding *et al.* (1984), however, provided additional
54
55
56
57
58
59
60

1
2
3 support for former ice-sheet glaciation of St Kilda in the form of exotic, strongly abraded
4 mineral grains, apparently derived from Lewisian basement rocks, in several samples of
5 alluvial sediments. Two samples dredged from nearshore sea-floor sediments at water depths
6 of 30 m and 50 m also produced exotic rock fragments, including gneisses and arkosic
7 sandstone.
8
9

10
11 Detailed survey of the landforms and lithostratigraphy of Hirta led Sutherland *et al.* (1984) to
12 conclude that there was evidence for three glacial episodes on the island: (1) over-running of
13 part or all of the island by a pre-Devensian ice sheet, as represented by the erratic mineral
14 grains detected by Cockburn (1935) and Harding *et al.* (1984); (2) an Early- or pre-Devensian
15 advance of locally-nourished glacier ice in the Village Bay area, represented by a thick
16 lithostratigraphic unit that they termed the 'Ruaival Drift' and interpreted as a till; and (3) a
17 more restricted Late Devensian (LLGM) advance of locally-nourished glacier ice in the Village
18 Bay area, represented by a subglacial till, a lateral moraine along the western side of the
19 Village Bay area (Fig. 2), and an indistinct drift limit along the eastern side of the same valley.
20 They noted that in Gleann Mòr the evidence for former glaciation is limited to apparent
21 transport of ultrabasic boulders up reverse slopes, and suggested that these may provide
22 evidence for a small former glacier in the valley. Finally, they interpreted two debris ridges
23 below cliffs in the Village Bay area as protalus ramparts and attributed these to the Loch
24 Lomond (Younger Dryas) Stade of ~12.9–11.7 ka, the final period of stadial conditions in
25 Scotland. Their dating evidence was limited to a single radiocarbon age determination of
26 24,710 +1470/-1240 ¹⁴C yr BP (32.7–26.3 cal ¹⁴C ka) obtained from a bulk sample of organic-
27 rich sand (slopewash deposit) buried under bouldery periglacial slope deposits outside the limit
28 of the most recent local glaciation in the Village Bay area, but noted that this date provides
29 only a minimum age estimate for emplacement of the overlying slope deposit as there is
30 evidence for incomplete removal of modern contaminating material.
31
32
33
34
35
36
37
38
39
40
41
42
43
44

45 Following re-examination of the landforms and lithostratigraphy of Hirta, Hiemstra *et al.*
46 (2015) proposed that there is evidence for only two glacial events on the island, corresponding
47 to the earliest and most recent glaciations proposed by Sutherland *et al.* (1984; events (1) and
48 (3) above), and tentatively attributed the most recent (local) glaciation to the Last Glacial
49 Maximum. The main difference between the conclusions of their study and those of Sutherland
50 *et al.* (1984) is reinterpretation of the 'Ruaival Drift' deposit as 'an association of gelifluctates
51 and other periglacial and/or paraglacial slope deposits rather than a subglacial till' (Hiemstra *et*
52 *al.*, 2015, p. 189), on the basis of the lithology and angularity of constituent clasts, scarcity of
53
54
55
56
57
58
59
60

1
2
3 matrix material and absence of structures indicative of subglacial deformation or glacitectonic
4 thrusting. We examined this deposit in the field and agree with this reinterpretation. Hiemstra
5 *et al.* (2015) also presented a 2D ice-flow model based on an assumed equilibrium line altitude
6 of 190 m OD. This model suggested that ice cover initially accumulated on high ground before
7 eventually occupying the western part of the Village Bay area and filling Gleann Mòr. They
8 also reinterpreted the supposed 'protalus rampart' identified by Sutherland *et al.* (1984) SW of
9 Mullach Sgar as a continuation of the Village Bay lateral moraine. The prominent putative
10 'protalus rampart' below the cliffs of Conachair (Ballantyne, 2002) is here reinterpreted as an
11 arcuate rockslide runout deposit, similar to others in the British Isles (Ballantyne & Stone
12 2009; Ballantyne *et al.* 2013, 2014). This rockslide may have occurred at any time following
13 deglaciation of the Village Bay area, and has no palaeoclimatic significance.

14
15
16
17
18
19
20
21
22 The key conclusions reached by both Sutherland *et al.* (1984) and Hiemstra *et al.* (2015) are
23 that although an ice sheet sourced from the east reached and partly over-ran St Kilda at some
24 time during the Pleistocene, during the LLGM St Kilda supported only locally-nourished
25 glacier ice of very limited extent and was not over-run by the last ice sheet. This interpretation
26 conflicts with the view that the last ice sheet terminated to the west of the archipelago at or
27 near the Atlantic shelf edge (Bradwell *et al.*, 2008; Chiverrell & Thomas 2010; Gibbard &
28 Clark 2011; Clark *et al.*, 2012), a scenario that implies at least partial over-running of the
29 archipelago by the ice sheet. The research reported below was designed to test the status of
30 LLGM glaciation on St Kilda and the age of local glaciation through cosmogenic ^{10}Be and ^{36}Cl
31 surface exposure dating of glacially-emplaced boulders on Hirta at key locations.

32 33 34 35 36 37 38 39 Methods

40 41 42 *Sampling*

43
44 Samples for cosmogenic nuclide dating were chiseled from the tops of large boulders at four
45 locations: (1) at 285–295 m on the ridge (Mullach Geal) separating the Village Bay area from
46 Gleann Mòr; (2) within Gleann Mòr; (3) on the Village Bay lateral moraine; and (4) within the
47 area occupied by a local glacier in the Village Bay area (Fig. 2). Although numerous boulders
48 litter the high ground, most are derived from weathering of the underlying bedrock in the form
49 of periglacial blockfields (Sutherland *et al.*, 1984), and high-level boulders resting on bedrock
50 are confined to a small area on Mullach Geal (Fig. 4a). Similarly, large boulders are rare in
51 Gleann Mòr, apart from those deposited by rockfall along the flanks of the valley, and here we
52 restricted our sampling to large glacially-deposited boulders near the valley axis (Fig. 4b).
53
54
55
56
57
58
59
60

1
2
3 Granite, granophyre, dolerite and gabbro boulders are much more abundant in the Village Bay
4 area, and here we sampled large embedded boulders outside the area of former settlement to
5 avoid sampling boulders displaced by human activity (Fig. 4c) and on the lateral moraine (Fig.
6 4d). From our 23 samples we selected eleven for analysis based on location and boulder
7 characteristics (Table 1). Boulder location and altitude were established using handheld GPS
8 and checking against a 1:25,000 Ordnance Survey contoured map, and topographic shielding
9 was assessed in the field using a compass and clinometer.
10
11
12
13

14 *Laboratory analysis*

15
16
17 For ^{10}Be analysis mineral separation, quartz isolation and purification were carried out at the
18 School of Geographical and Earth Sciences, University of Glasgow (GU). Aluminium
19 concentration in the quartz separates is a proxy for quartz purity and was measured by flame
20 atomic absorption spectroscopy. Extraction of beryllium and preparation of targets for AMS
21 analysis were performed at the GU/SUERC Cosmogenic Isotope Laboratory housed at the
22 Scottish Universities Environmental Research Centre (SUERC) in East Kilbride, following
23 methods modified from Kohl & Nishiizumi (1992) and Child *et al.* (2000). Samples were
24 processed with one full-chemistry (procedural) blank. Beryllium isotope ratios in the samples
25 and procedural blank were measured with the SUERC 5MV accelerator mass spectrometer (Xu
26 *et al.* 2010). Procedural blank correction represents <8% of the total ^{10}Be atoms in the samples.
27 Details of sample and ^9Be spike masses, AMS measurement, and exposure age calculation are
28 presented in Table 2.
29
30
31
32
33
34
35
36

37
38 For whole rock ^{36}Cl analysis samples were processed at the NERC Cosmogenic Isotope
39 Analysis Facility (CIAF) at SUERC. Samples were crushed and sieved to <500 μm , leached in
40 hot HNO_3 (trace metal analysis grade) and then washed thoroughly with ultrapure water to
41 remove meteoric ^{36}Cl contamination from grain surfaces. Each sample was then split into two
42 fractions: about 2 g for elemental analysis by ICP-OES and ICP-MS, and about 20 g for
43 analysis of ^{36}Cl with accelerator mass spectrometry (AMS). Chlorine was extracted and
44 purified from the 125–250 μm fraction of leached samples to produce AgCl for AMS analysis
45 according to a modified version of procedures developed by Stone *et al.* (1996). Samples were
46 processed together with a full chemistry blank. $^{36}\text{Cl}/^{35}\text{Cl}$ and $^{36}\text{Cl}/^{37}\text{Cl}$ ratios were measured
47 with the SUERC 5 MV accelerator mass spectrometer (Wilcken *et al.* 2009). Procedural blank
48 correction represents <4% of the total ^{36}Cl atoms in the samples. Details of sample and Cl
49 spike masses, AMS measurement, and exposure age calculation are presented in Table 3.
50
51
52
53
54
55
56
57
58
59
60

Results

The surface exposure ages presented in Tables 2 and 3 are based on assumption of zero erosion of the sampled surfaces since exposure; the effects of factoring in erosion rates are considered below. Arithmetic mean exposure ages for pairs or groups of samples differ from uncertainty-weighted mean exposure ages by ≤ 0.2 ka, so only the latter are cited here. Similarly, ^{10}Be ages calculated using the Loch Lomond production rate (LLPR) are almost identical to those calculated using CRONUScalc (Table 2). For consistency with ^{36}Cl ages, only the ages calculated using CRONUScalc were used in calculation of weighted mean ages. Uncertainties ($\pm 1\sigma$) cited below are systematic (external) uncertainties.

All but two of our samples (StK-07 and StK-19) produced consistent ages for particular locations (Tables 2 and 3; Figure 5). The two samples from high-level perched boulders on Mullach Geal (StK-09 and St-K-10A) yielded a weighted mean ^{36}Cl exposure age of 81.6 ± 7.8 ka, and the two from boulders in Gleann Mòr yielded a weighted mean ^{36}Cl exposure age of 30.9 ± 3.2 ka. Reduced χ^2 values for each pair are 0.002 and 0.743 respectively, both values being consistent with ages drawn from a single population. The three ^{36}Cl exposure ages obtained from boulders on the Village Bay lateral moraine (19.4 ± 2.9 ka, 18.8 ± 3.8 ka and 19.8 ± 2.2 ka) yield a weighted mean age of 19.2 ± 2.3 ka, very similar to the ^{10}Be exposure ages (19.2 ± 1.1 ka and 19.1 ± 1.2 ka) of samples StK-06 and StK-18 for samples obtained from boulders inside the limit of the most recent glaciation in the Village Bay area as defined by this lateral moraine. Collectively, these five samples produced a reduced χ^2 value of 0.105, consistent with sampling from a single age population, and weighted mean age of 19.2 ± 2.3 ka. The two other samples from the Village Bay area, StK-07 (15.9 ± 1.4 ka) and StK-19 (48.8 ± 4.1 ka) both differ from this weighted mean age at $p < 0.001$ (Fig. 5). We attribute these discrepancies to probable transient shielding of StK-07 by sediment cover (Putkonen & Swanson 2003; Heyman *et al.* 2011), and to exposure of StK-19 prior to the final glaciation of the Village Bay area. Both are excluded from further consideration.

To assess the influence of erosion rate on our results, we calculated the weighted mean ages for the three groups of samples (Mullach Geal high-level boulders, Gleann Mòr boulders and Village Bay samples) for erosion rates (ϵ) of 1 mm ka^{-1} , 2 mm ka^{-1} and 3 mm ka^{-1} . As can be seen from Table 4, assumption of different erosion rates has very little effect on the weighted mean age of the five Village Bay samples, in part because increases in the apparent age of the two samples analysed using ^{10}Be is counterbalanced by decreases in the apparent ages of the three samples analysed using ^{36}Cl , so the weighted mean age remains similar under all erosion

1
2
3 rate scenarios. Under the assumption that $0 \leq \varepsilon \leq 3 \text{ mm ka}^{-1}$, the weighted mean ages obtained
4 for the two Gleann Mòr samples also vary little, from $30.5 \pm 3.2 \text{ ka}$ to $31.0 \pm 3.4 \text{ ka}$. The much
5 older weighted mean ages for the two high-level boulders on Mullach Geal, however, exhibit a
6 marked rise in apparent age with increasing erosion rate. The results presented in Table 4
7 therefore demonstrate that a weighted mean age based on assumption of zero erosion rates for
8 the five Village Bay samples ($19.2 \pm 2.3 \text{ ka}$) and the two Gleann Mòr samples (30.9 ± 3.2) can
9 be considered representative for $\varepsilon \leq 3 \text{ mm ka}^{-1}$, irrespective of whether the arithmetic or
10 uncertainty-weighted mean is used. Less confidence can be placed on the assumption of a zero-
11 erosion weighted mean age of $81.6 \pm 7.8 \text{ ka}$ for the two Mullach Geal samples, as within the
12 range $0 \leq \varepsilon \leq 3 \text{ mm ka}^{-1}$ the true weighted mean exposure age may be up to 15% greater.
13
14
15
16
17
18
19

20 Discussion

21
22 The discussion below focuses first on the implications of our exposure ages for the lateral
23 extent of the last ice sheet on the Hebridean Shelf, then on the interpretation of these ages in
24 terms of the timing of glacial events on St Kilda.
25
26
27

28 *Implications for the extent of the last ice sheet*

29
30 The case for extension of the last ice sheet to the edge of the Hebrides Shelf rests mainly on the
31 presence of ice-marginal moraines on the outermost shelf and the evidence for glacial
32 sedimentation on trough-mouth fans. Moraine banks on the northern Hebrides Shelf were first
33 detected mainly from seismostratigraphic evidence (Stoker & Holmes, 1991) and initially
34 attributed to a pre-Late Devensian glaciation, with the limit of the last ice sheet being depicted
35 as a broad arc west of the Outer Hebrides but terminating a short distance east of St Kilda
36 (Selby 1989; Stoker *et al.* 1993). Subsequent research based on high-resolution echosounder
37 data has verified the existence of broad shelf-edge ridges on much of the Hebrides Shelf and
38 identified similar features on the edge of the Shetland Shelf to the north (Bradwell *et al.*, 2008;
39 Clark *et al.* 2012; Bradwell & Stoker 2015a), and along the edge of the Malin Shelf and the
40 Irish Shelf to the south (Dunlop *et al.* 2010; Ó Cofaigh *et al.* 2012). Radiocarbon ages obtained
41 on shells and benthic foraminifera on the Irish Shelf appear to confirm that the last ice sheet
42 reached the shelf edge in this sector (Peters *et al.* 2015; Ballantyne & Ó Cofaigh 2017). For the
43 Hebrides Shelf, a radiocarbon age of $22,480 \pm 300 \text{ }^{14}\text{C a BP}$ ($27.2\text{--}25.9 \text{ cal }^{14}\text{C ka}$) reported by
44 Peacock *et al.* (1992) for a marine bivalve recovered from glacimarine sediments west of
45 moraine banks to the south of St Kilda is consistent with the last ice sheet extending to the
46 outer shelf (though not necessarily to the shelf edge), as are the cosmogenic ^{10}Be exposure ages
47
48
49
50
51
52
53
54
55
56
57
58
59
60

1
2
3 obtained from North Rona (Everest *et al.* 2013). The evidence for a pronounced increase in
4 IRD deposited on the Barra-Donnegal Fan at ~29–27 ka (Kroon *et al.* 2000; Knutz *et al.* 2001;
5 Wilson *et al.* 2002; Peck *et al.* 2007; Scourse *et al.* 2009) indicates that the contributing ice
6 stream reached the shelf edge by ~27 ka, but does not necessarily imply that all shelf-edge
7 moraine banks on the Hebridean Shelf are of Late Devensian age. In this context it is notable
8 that the seismostratigraphic and borehole evidence reported by Stoker & Holmes (1991) and
9 Stoker *et al.* (1994) indicates that the shelf-edge moraine banks on the northern Hebrides Shelf
10 were deposited by a pre-Late Devensian Ice Sheet of probable Mid to Late Pleistocene
11 (< 0.45 Ma) age. This interpretation has been developed by Stoker & Bradwell (2015a), who
12 employed a combination of seismostratigraphic evidence with high-resolution bathymetric data
13 to argue that the LLGM shelf edge moraines on the West Shetland shelf correlate with mid-
14 shelf moraines north of the Outer Hebrides, implying that the shelf-edge moraines on the North
15 Hebrides shelf were deposited during a previous ice-sheet glaciation.

16
17
18
19
20
21
22
23
24
25 The geomorphological and lithological evidence presented by Sutherland *et al.* (1984) and
26 refined by Hiemstra *et al.* (2015) suggests that the last ice sheet failed to over-run St Kilda.
27 This interpretation is supported by some of our exposure ages. The exposure ages of (\geq)
28 81.7 ± 8.2 ka and (\geq) 81.5 ± 7.8 ka obtained for perched boulders at ~290 m on Mullach Geal
29 imply that the higher parts of St Kilda were not over-run by the last ice sheet. This
30 interpretation is supported by two observations. First, the higher parts of the more easterly
31 summits (Conachair and Oisebhal) are underlain by granite and granophyre (Fig. 3) and littered
32 with numerous frost-detached boulders that form summit blockfields. Had westward-moving
33 ice over-run the high ground, it would be expected that granite and granophyre erratics would
34 occur on Mullach Mòr, immediately to the west, but none has been observed. Second, high
35 ground along the SE of the island is crowned by dolerite tors surrounded by slabs detached by
36 frost wedging (Sutherland *et al.* 1984). Examination of these tors provided no evidence of
37 modification by glacier ice or displacement of detached slabs (*cf.* André 2004; Hall & Phillips
38 2006) and indeed some tors support precariously-balanced capstone slabs that appear very
39 unlikely to have survived over-running by an ice sheet.

40
41
42
43
44
45
46
47
48
49
50
51 In the Village Bay area there is evidence for only local ice cover, as represented by the
52 distribution of till and the Village Bay lateral moraine (Fig. 2). Both Sutherland *et al.* (1984)
53 and Hiemstra *et al.* (2015) argued that this local glaciation represented the Last Glacial
54 Maximum on St Kilda. Five samples obtained from the lateral moraine or within the area
55 occupied by the former Village Bay glacier, however, have produced consistent post-LLGM
56
57
58
59
60

1
2
3
4
5
6
7
8
9
10
11
12
13
14
15
16
17
18
19
20
21
22
23
24
25
26
27
28
29
30
31
32
33
34
35
36
37
38
39
40
41
42
43
44
45
46
47
48
49
50
51
52
53
54
55
56
57
58
59
60

ages within the range 19.8 ± 2.2 ka to 18.8 ± 3.8 ka (Tables 2 and 3) and a weighted mean age of 19.2 ± 2.3 ka that is independent of assumed erosion rate (Table 4). Given that there is evidence for the ice margin reaching the shelf edge at the Barra-Donegal Fan at ~ 27 ka (Scourse *et al.*, 2009), glacial marine sedimentation south of St Kilda at 27.2–25.9 cal ^{14}C ka (Peacock *et al.* 1992) and that the ice margin retreated past North Rona at ~ 25 ka (Everest *et al.*, 2013), the timing of local glaciation in the Village Bay area was manifestly not coincident with advance of the ice-sheet margin to the shelf edge, but occurred several millennia later. The evidence for local glaciation of the Village Bay area therefore does not conflict with the proposition that the last ice sheet crossed lower ground on St Kilda and advanced towards the shelf edge, as it is feasible that advance and retreat of the ice-sheet was followed by later development of locally-nourished glacier ice at ~ 19.2 ka or slightly earlier.

Conversely, the ^{36}Cl exposure ages obtained for samples StK-13 and StK-14 from two widely-separated large boulders in Gleann Mòr (32.0 ± 3.8 ka and 30.1 ± 2.9 ka) suggest that glacier ice occupied this valley long before the ice-sheet margin reached St Kilda. Given the large uncertainties associated with these ages the possibility that ice flowing from the Outer Hebrides was responsible for depositing these boulders cannot be excluded, but seems extremely unlikely for several reasons. First, to enter Gleann Mòr, a westward-flowing ice sheet would have to cross the col at 239 m that separates Gleann Mòr from Village Bay. However, the exposure ages (> 80 ka) of the boulders sampled at ~ 290 m on Mullach Geal, less than 300 m from the col, limit the possible thickness of ice crossing the col into Gleann Mòr to less than 50 m. That the last ice sheet should have been just thick enough to cross the col and extend into Gleann Mòr but not remove the Mullach Geal perched boulders is implausible. Second, there is no evidence for a westward moving ice sheet crossing the Village Bay area prior to the local Village Bay glaciation. Instead, as Hiemstra *et al.* (2015) have demonstrated, the slopes on the west side of Village Bay outside the limit of local glaciation are covered by a periglacial slope deposit up to 13 m thick that overlies fractured and weathered bedrock (Fig. 6). This deposit is composed entirely of locally-derived (dolerite) material in the form of a clast-or matrix-supported diamicton with coarse gravel (cobble to boulder) subunits. Clasts are generally angular, and in appearance this deposit closely resembles some of the thick 'head' or gelifluctate deposits found in coastal cliffs outside the limit of Late Devensian glaciation in SW England and south Wales (Harris, 1987; Ballantyne & Harris, 1994). As Hiemstra *et al.* (2015) pointed out, the remarkable thickness of this deposit implies a very prolonged period of rock weathering and mass movement under severe periglacial conditions, uninterrupted by glaciation. Finally, the radiocarbon age of

24,710 +1470/-1240 ¹⁴C yr BP (32.7–26.3 cal ¹⁴C ka) obtained by Sutherland *et al.* (1984) for an organic-rich sand layer buried under a bouldery periglacial slope deposit on the western slope of Village Bay represents a *minimum* age for the sand in view of possible contamination, and there is no evidence that this sand or the overlying slope deposit have been modified by glacier ice.

In sum, the exposure ages reported here support the conclusions reached by Sutherland *et al.* (1984) and Hiemstra *et al.* (2015) that the last ice sheet failed to over-run St Kilda. Hiemstra *et al.* (2015) pointed out that the bathymetric evidence suggests that submarine moraines defining broad lobes of ice exist on the seafloor both north and south of St Kilda (Fig. 7), and suggested that the archipelago represented an obstacle in the path of the advancing ice sheet, diverting ice flow both northwards and southwards at the LLGM and possibly leaving the islands of the archipelago standing proud of the ice sheet as a palaeonunatak. Given the absence of any evidence for the encroachment of the last ice sheet on the present land surface of St Kilda (and particularly the evidence provided by thick periglacial slope deposits extending to near sea level in the Village Bay area), they acknowledged that this scenario requires that former ice lobes encircling St Kilda cannot have been thicker than the depth of the surrounding submarine platform, ~120–130 m below present sea level (Harding *et al.*, 1984; Sutherland, 1984).

This interpretation appears plausible, but even if correct appears to imply that a narrow unglacierized zone extended from the lee of the archipelago northwestwards to the shelf edge. Moreover, for a thin (~120 m thick) ice sheet encircling St Kilda to have deposited the moraine banks on the outer shelf ~40 km to the west and ~20 km east of the shelf edge (Fig. 7), it must have moved under very low basal shear stress. The profile of a laterally-unconstrained ice sheet moving over a rigid horizontal bed may be approximated by a parabola described by:

$$h = \sqrt{2\tau_b L / \rho g} \quad (1)$$

where h is ice thickness, τ_b is basal shear stress (\approx driving stress, if lateral drag is assumed to be negligible), L is distance to the ice margin, ρ is ice density (900 kg m⁻³) and g is gravitational acceleration (9.8 m s⁻¹). Rearranging this equation, τ_b is approximated by:

$$\tau_b = \rho g h^2 / 2L \quad (2).$$

Setting h at 120 m and L at 40 km yields $\tau_b \approx 1.6$ kPa, and setting L at 60 km (the approximate distance to the shelf edge) yields $\tau_b \approx 1.1$ kPa. Both values of driving stress are nearly two

orders of magnitude lower than the 50–100 kPa typical of grounded ice sheets outside zones of ice streaming, though movement at lower shear stresses is possible over a deforming bed (Paterson 1994; Benn & Evans 2010). Conversely, if we assume $\tau_b = 50$ kPa, assumption of a parabolic ice profile implies that ice 120 m thick would have terminated just ~1.3 km west of St Kilda, and assumption of $\tau_b = 10$ kPa places the ice margin just 6.3 km west of St Kilda. The implications of these calculations are discussed below.

The timing of glaciation on St Kilda

At face value, the two consistent ^{36}Cl exposure ages obtained for boulders resting on bedrock at ~290 m altitude on Mullach Geal (Table 3) would appear to imply contemporaneous deposition of these boulders by a thick ice sheet that over-ran much of St Kilda then retreated at 81.6 ± 7.8 ka or earlier (Table 4). This interpretation is highly unlikely. As noted above, there is no evidence for (1) westward transport of granophyre and granite erratics sourced from the extensive outcrop in the east of Hirta (Fig. 3), (2) glacial modification of dolerite tors, or (3) till deposits apart from those emplaced during the most recent local glaciation of the Village Bay area (Hiemstra *et al.* 2015). Moreover, the Greenland ice core stable isotope record shows that the period ~84.7–79.7 ka was represented by a prolonged interstadial (GI-21e; Wolff *et al.* 2010; Rasmussen *et al.* 2014; Fig. 8), suggesting that advance of a thick ice sheet over St Kilda or growth of local ice on St Kilda was unlikely at this time. We conclude that both sampled boulders on Mullach Geal were probably released from the underlying dolerite bedrock by *in situ* frost wedging (Fig. 4a) rather than deposited by glacier ice. This interpretation implies that neither a former ice sheet nor a local ice cap occupied Mullach Geal over at least the past ~80 ka.

In contrast, the two boulders sampled on the floor of Gleann Mòr (samples StK-13 and StK-14) can only have been deposited by glacier ice. Both are isolated gabbro boulders resting on level ground, the former over 220 m from the foot of the nearest slope and the latter over 60 m from the slope foot, so rockfall deposition can be excluded. Moreover, the boulder from which sample StK-13 was obtained (Fig. 4b) is an erratic, resting on terrain underlain by granite (Fig. 3). There is, however no persuasive geomorphological or lithostratigraphic evidence for former glaciation in Gleann Mòr. Both Harding *et al.* (1984) and Sutherland *et al.* (1984) mapped the sediment cover on the surrounding slopes as periglacial slope deposits ('head') and the latter also mapped shallow exposures of periglacial slope deposits at the mouth of the glen. There are, however, no exposures on the floor of the valley, and it is possible that the slope deposits on the valley sides and the valley mouth represent, at least in part, soliflucted till deposits.

1
2
3
4
5
6
7
8
9
10
11
12
13
14
15
16
17
18
19
20
21
22
23
24
25
26
27
The weighted mean exposure age of the two Gleann Mòr samples (30.9 ± 3.2 ka) implies prior ice expansion then retreat of a small, locally-nourished glacier. These ages are consistent with the timing of the initial expansion of Outer Hebrides ice as determined by radiocarbon ages spanning $29.1\text{--}26.2$ ^{14}C ka ($34.0\text{--}29.7$ cal ^{14}C ka) obtained for organic sediments buried by till at Tolsta Head in NE Lewis (Whittington & Hall 2002). Both events are, within dating uncertainty, coincident with a prolonged stadial, Greenland Stadial 5 (GS-5) in the Greenland ice-core record ($\sim 32.0\text{--}28.9$ ka; Fig. 8), when $\delta^{18}\text{O}$ values were as low as at any time in the past 100,000 years (Rasmussen *et al.* 2014), and which incorporated Heinrich Stadial 3 of $\sim 32.7\text{--}31.3$ ka (Sanchez Goñi & Harrison 2010). It seems possible that limited glacier expansion in Gleann Mòr was approximately synchronous with that of the Outer Hebrides ice cap in response to GS-5 cooling, but whereas the latter survived subsequent warming during Greenland Interstadial 4 (GI-4) and continued to expand under conditions of renewed cooling during GS-4, the much smaller Gleann Mòr glacier shrank and disappeared. As there is no evidence of later glaciation in the valley, it appears to have remained ice-free and subject to severe periglacial conditions throughout the LLGM.

28
29
30
31
32
33
34
35
36
37
38
39
40
41
42
43
44
45
46
An alternative possibility is that glaciation of Gleann Mòr occurred at the same time as that of the Village Bay area (19.2 ± 2.3 ka), as suggested by the ice-flow model depicted by Hiemstra *et al.* (2015), and that both exposure ages obtained for boulders in Gleann Mòr are compromised by nuclide inheritance from a previous period of exposure. This appears unlikely given the consistency of the two ages. It is also notable that the ice-flow model does not take into account the effects of redistribution of snow by wind, and probably for this reason generated a small ice cap on high ground feeding valley glaciers in both Gleann Mòr and the western part of Village Bay. As noted above, however, the two exposure ages obtained for perched boulders on Mullach Geal (Fig. 4a) indicate that high ground on Hirta has been ice free for at least the past 80 ka; had an ice cap existed, it seems unlikely that such perched boulders could have remained in place.

47
48
49
50
51
52
53
54
55
56
57
58
59
60
Both Sutherland *et al.* (1984) and Hiemstra *et al.* (2015) inferred that the abundant evidence for a former small valley glacier in the Village Bay area represented glaciation during the Last Glacial Maximum. However, the five consistent exposure ages of 19.8 ± 2.2 ka to 18.8 ± 3.8 ka (weighted mean 19.2 ± 2.3 ka) obtained for boulders on the Village Bay lateral moraine and terrain inside this moraine (Tables 2–4) demonstrate that the final glacial event on St Kilda occurred several millennia after the LLGM, at a time when marine-terminating sectors of the last BIIS were in retreat (Clark *et al.* 2012; Chiverrell *et al.* 2013). In terms of the Greenland

1
2
3 ice-core record, the final glaciation and deglaciation of St Kilda occurred under stadial
4 conditions during GS-2.1a to GS-2.1b (22.9–17.5 ka; Rasmussen *et al.*, 2014; Fig. 8). In view
5 of the large uncertainties of our exposure ages it is not possible to attribute the expansion and
6 retreat of the Village Bay glacier to climatic forcing within GS-2.1, particularly as the limited
7 extent of the former glacier (< 1 km²) implies that it could have developed and vanished within
8 a few centuries. Moreover, the timing of Village Bay glaciation predates established
9 readvances of the last ice sheet on land, such as the Clogher Head Readvance (~18.4 ka) and
10 Killard Point Readvance (~17.3–16.6 ka) in northern Ireland (McCabe *et al.* 2007; Ballantyne
11 & Ó Cofaigh 2017); the Wester Ross Readvance (~15.2 ka) in NW Scotland (Ballantyne &
12 Stone 2012) or readvances dated by Small *et al.* (2016) in southern Skye (~17.6 ka) and on the
13 Isle of Soay (~15.2 ka).

21 The difference in the weighted mean exposure ages obtained for boulders in Gleann Mòr
22 (30.9 ± 3.2 ka) and Village Bay (19.2 ± 2.3) poses a conundrum, as there is no
23 geomorphological, lithostratigraphic or dating evidence for glaciation of the Village Bay area
24 prior to the ~19.2 ka event (Hiemstra *et al.* 2015). There are three possible explanations. First,
25 there may have been limited local glaciation of the Village Bay area at the time that ice
26 occupied Gleann Mòr, but the later Village Bay glaciation was more extensive and removed all
27 evidence of the earlier event. Second, as suggested above, the exposure ages obtained for
28 boulders in Gleann Mòr may be compromised by prior exposure, and that both valleys were
29 occupied by glacier ice at ~19.2 ka, though the consistency in the Gleann Mòr exposure ages
30 suggests that this unlikely. Finally, it is possible that climatic circumstances and particularly
31 different patterns of snow accumulation favoured glacier formation in Gleann Mòr during the
32 earlier event but ice accumulation in Village Bay during the later event. On present evidence
33 there is no way of resolving these alternative scenarios.

44 Wider implications

46 As outlined earlier, the notion that the last BIIS extended along its entire length to the Atlantic
47 Shelf edge has been widely promoted (Bradwell *et al.* 2008; Hubbard *et al.* 2009; Chiverrell &
48 Thomas 2010; Gibbard & Clark 2011). Clark *et al.* (2012, p. 141), for example, concluded that
49 there is '...unequivocal evidence for glaciation to the continental shelf edge all the way from
50 SW Ireland to the Shetland Isles'. Others, however, have continued to argue that this
51 interpretation (which is largely based on the interpretation of shelf-edge moraine banks from
52 bathymetric imagery) contravenes the stratigraphic evidence in the area of the northern
53 Hebrides Shelf (Stoker & Holmes 1991; Stoker *et al.*, 1993, 1994; Stoker, 2013). This latter
54
55
56
57
58
59
60

1
2
3 view implies that the last ice sheet failed to extend to the shelf edge in at least part of the inter-
4
5 ice-stream sector between the Minch and Hebrides Ice Streams, but extended no farther than
6
7 mid-shelf; Bradwell & Stoker (2015a, p. 317) even suggest that the LLGM ice margin was
8
9 '...situated close to the present-day coastline in NW Lewis...' though this interpretation is also
10
11 based on interpretation of moraine configuration on bathymetric imagery.

12
13 Although the presence of exotic mineral grains in glacial, periglacial and alluvial sediments
14
15 detected by Cockburn (1935) and Harding *et al.* (1984) provide evidence that a former ice
16
17 sheet encroached on St Kilda, the geomorphological and lithostratigraphic evidence presented
18
19 by Sutherland *et al.* (1984) and Hiemstra *et al.* (2015) together with the exposure ages reported
20
21 here demonstrate that the *last* ice sheet failed to do so. Hiemstra *et al.* (2015) attempted to
22
23 reconcile this finding with the LLGM Atlantic shelf-edge model by suggesting encirclement of
24
25 St Kilda by thin ice lobes (Fig. 7). As noted above, however, this solution implies extension of
26
27 ice to the outermost moraine banks under extremely low (~1.6 kPa) driving stresses.

28
29 Low (< 2 kPa) values of basal shear stress have been inferred for the distal parts of West
30
31 Antarctic ice streams moving over deforming beds (Kamb, 2001; Joughin *et al.* 2002), but
32
33 these flow into deep water, which maintains the high hydrological base level necessary to
34
35 sustain elevated basal water pressures that permit fast ice flow under low driving stresses. This
36
37 situation appears unlikely for ice flowing across the St Kilda platform and adjacent shelf (-120
38
39 to -130 m OD) during the LLGM, when global eustatic sea level was $\sim 125 \pm 10$ m below
40
41 present (Clark *et al.* 2009; Lambeck *et al.* 2014), implying grounded ice termination in shallow
42
43 water or even on dry land. However, Clark (1992) calculated from moraine altitudes and ice
44
45 palaeoflow vectors that some of the vast land-based ice lobes that drained the southern margin
46
47 of the Laurentide Ice Sheet comprised thin, low-gradient ice moving under driving stresses
48
49 < 2 kPa, which he explained in terms of rapid rates of ice advance through basal sliding and/or
50
51 bed deformation. Although there appears to be no present-day analogue for such behaviour
52
53 (apart from the distal portions of deepwater-terminating Antarctic ice streams) it suggests the
54
55 possibility that thin, low-gradient ice lobes flanking St Kilda may have reached the outermost
56
57 moraine banks as transient ice streams or surges. The possible role of subglacial sediment
58
59 deformation is difficult to assess. According to echo-soundings reported by Harding *et al.*
60
61 (1984, p. 35) 'much of the sea floor near the islands is free of unconsolidated sediment'. This
62
63 does not, however, exclude the possibility of sediment cover on the seabed flanking the St
64
65 Kilda platform.

1
2
3 An alternative possibility is that the features interpreted as moraine banks west of St Kilda
4 (Fig. 7) pre-date the LLGM (MIS 2) and were deposited by an earlier, more extensive ice
5 sheet, such as that responsible for deposition of erratic material on St Kilda. It is notable that
6 shelf-edge moraine banks on the northern Hebrides Shelf were initially attributed to a pre-
7 MIS 2 glaciation on the basis of amino-acid diagenesis (Stoker & Holmes 1991; Stoker *et al.*
8 1993; Stoker & Bradwell 2005). This conclusion was queried by Bradwell *et al.* (2008) on the
9 grounds of the unreliability of the dating technique, even though the stratigraphic evidence
10 presented by Stoker and his co-researchers (Stoker & Holmes 1991; Stoker *et al.* 1994)
11 provided strong evidence to the contrary. The recent reappraisal of moraine systems on the
12 northern and central parts of the Hebrides Shelf by Bradwell & Stoker (2015a) appears to
13 conform with the stratigraphic evidence and suggests that ice moving westward from the Outer
14 Hebrides extended no farther than mid-shelf. The failure of the last ice sheet to encroach on St
15 Kilda is entirely consistent with this view.
16
17
18
19
20
21
22
23

24
25 Irrespective of which of the above interpretations is valid, there is no evidence that the margin
26 of the last ice sheet reached the shelf edge in this sector, as the outermost moraine banks are
27 located ~20 km east of the shelf break (Fig. 7). This suggests that although the ice margin
28 reached the shelf break in areas of former ice streaming, generating turbiditic flows on trough-
29 mouth fans (e.g. Baltzer *et al.* 1998; Kroon *et al.* 2000; Wilson & Austin 2002; Scourse *et al.*
30 2009), the limits of the last ice sheet in some inter-ice-stream sectors may have been more
31 conservative than those depicted in recent shelf-edge models. It also implies that westward
32 extension of the margin of the last ice sheet was not invariably halted by a rapid increase in
33 water depth at the shelf break, but that on some sectors of the outer shelf the ice margin
34 remained grounded in shallow tidewater or dry land (*cf.* Stoker *et al.* 1993).
35
36
37
38
39
40
41

42 It is also notable that the timing of the two episodes of inferred local glaciation on St Kilda, at
43 30.9 ± 3.2 ka (Gleann Mòr) and 19.2 ± 2.3 ka (Village Bay) are out of phase with the timing of
44 the LLGM. It seems likely that the climatic impetus for limited local glaciation and
45 deglaciation of St Kilda was too short-lived to have affected an ice sheet that was responding
46 to longer-term climatic trends. The absence of evidence for glaciation on St Kilda during the
47 Younger Dryas Stade of ~12.9–11.7 ka is also of interest. At this time small glaciers formed on
48 the mountains of the Outer Hebrides, with reconstructed equilibrium line altitudes of 150–
49 289 m OD (Ballantyne 2006, 2007). It seems likely that glaciers failed to develop on St Kilda
50 during the Younger Dryas Stade because of the lack of high-level accumulation areas, with
51
52
53
54
55
56
57
58
59
60

1
2
3 snow being blown into valleys that were too low to allow progressive seasonal snow
4 accumulation and the formation of glacier ice.
5

6 7 Conclusions

- 8
9 1. The St Kilda archipelago, ~65 km W of the Outer Hebrides and ~60 km from the Atlantic
10 shelf break, is a key site for testing the assertion that the last BIIS extended to the Atlantic
11 shelf break in all sectors. Previous studies based on geomorphology and lithostratigraphy
12 (Sutherland *et al.* 1984; Hiemstra *et al.* 2015) have suggested that at the LLGM St Kilda
13 supported only locally-nourished glacier ice, but lacked dating control.
14
15
- 16 2. Samples from undisturbed boulders at three locations on Hirta produced three consistent
17 sets of exposure ages. Two perched boulders on the Mullach Geal ridge at ~290 m yielded
18 an average ^{36}Cl exposure age of (\geq) 81.6 ± 7.8 ka. Two isolated boulders on the floor of a
19 north-facing valley (Gleann Mòr) produced an average ^{36}Cl exposure age of 30.9 ± 3.2 ka.
20 Five samples from a lateral moraine and terrain inside the lateral moraine in the south-
21 facing Village Bay valley produced consistent ^{36}Cl and ^{10}Be ages averaging 19.2 ± 2.3 ka.
22
23
- 24 3. The Mullach Geal exposure ages confirm other evidence (undisturbed tors and absence of
25 erratic carry) that the last ice sheet did not cross high ground on St Kilda. The Gleann Mòr
26 exposure ages not only pre-date the estimated timing of the ice margin reaching the shelf
27 edge (~27 ka), but also cannot be explained in terms of deposition by the last ice sheet, and
28 we infer that they represent deposition of the boulders during retreat of a small locally-
29 nourished glacier that formed in this valley during GS-5. The Village Bay exposure ages
30 represent glaciation during GS-2.1, and post-date the assumed timing of the ice-sheet
31 maximum by several millennia.
32
33
- 34 4. The evidence provided by the Mullach Geal and Gleann Mòr exposure ages confirms that
35 the last ice sheet did not encroach on St Kilda. As the surrounding sea floor lies at 120–
36 130 m depth, ice encircling St Kilda cannot have exceeded ~120 m in thickness. A simple
37 parabolic model indicates that for ice of this thickness to have reached the outermost
38 moraine banks ~40 km to the west, ice movement must have occurred under extremely
39 low (< 2 kPa) driving stress. This implies either that extremely thin, low gradient ice lobes
40 exhibiting surge-like behaviour crossed the outer shelf to deposit these moraines during
41 the LLGM, or that some moraine banks at and near the shelf edge are of pre-MIS 2 age, as
42 argued by Bradwell & Stoker (2015a). There is no evidence that the margin of the last ice
43
44
45
46
47
48
49
50
51
52
53
54
55
56
57
58
59
60

1
2
3 sheet reached the shelf edge in this sector, suggesting that expansion of the last ice sheet in
4 this sector was not terminated by increasing water depth.
5

- 6
7
8 5. The very small glaciers inferred to have been responsible for depositing boulders in
9 Gleann Mòr (at ~30.9 ka) and in the Village Bay area (at ~19.2 ka) were out of phase with
10 the last ice sheet: the former Gleann Mòr glacier apparently retreated during a period of
11 overall ice-sheet advance, but the ages of boulders on the Village Bay lateral moraine
12 imply advance of local ice at a time when the marine-terminating limits of the last ice
13 sheet were retreating. The absence of evidence for Younger Dryas glaciation is attributed
14 to the low elevation of valley floors, which lie well below the reconstructed equilibrium
15 line altitudes of Younger Dryas glaciers in the Outer Hebrides.
16
17
18
19

20
21 *Acknowledgements* – We thank NERC-CIAF for funding analysis of the ^{10}Be and ^{36}Cl
22 exposure ages (Allocation 9116/0412), the Carnegie Trust for the Universities of Scotland for a
23 grant towards travel expenses, Graeme Sandeman for drafting the figures, Doug Benn for
24 discussion of ice-sheet driving stress and Alessa Geiger for mineral separation and purification.
25 Historic Scotland, the National Trust for Scotland and Scottish Natural Heritage generously
26 give permission for sampling on Hirta, and we thank the National Trust for providing
27 accommodation on St Kilda. John Hiemstra and Rick Shakesby provided good company
28 during our fieldwork on Hirta and took time to explain their re-interpretation of the
29 lithostratigraphy. We are grateful to Henriette Linge and Martin Stoker for constructive
30 reviews that greatly improved the balance of the discussion and conclusions.
31
32
33
34
35
36
37
38
39
40
41
42
43
44
45
46
47
48
49
50
51
52
53
54
55
56
57
58
59
60

References

- 1
2
3
4
5 André, M-F. 2004: The geomorphic impact of glaciers as indicated by tors in North Sweden
6 (Aurivaara, 68°N). *Geomorphology* 52, 149–164.
7
8
9 Balco, G., Stone J. O., Lifton, N. A. & Dunai, T. J. 2008: A complete and easily accessible
10 means of calculating surface exposure ages or erosion rates from ^{10}Be or ^{26}Al
11 measurements. *Quaternary Geochronology* 3, 174–195.
12
13
14 Ballantyne, C. K. 2002: The Conachair protalus rampart, St Kilda. *Scottish Geographical*
15 *Journal* 118, 343–350.
16
17
18 Ballantyne, C. K. 2006: The Loch Lomond Readvance in the Uig Hills, western Lewis,
19 Scotland. *Scottish Geographical Journal* 122, 256–273.
20
21
22 Ballantyne, C. K. 2007: Loch Lomond Stadial Glaciers in North Harris, NW Scotland: glacier
23 reconstruction and palaeoclimatic implications. *Quaternary Science Reviews* 26, 3134–
24 3149.
25
26
27 Ballantyne, C. K. & Hallam, G. F. 2001: Maximum altitude of Late Devensian glaciation on
28 South Uist, Outer Hebrides, Scotland. *Proceedings of the Geologists' Association* 112, 155–
29 167.
30
31
32 Ballantyne, C. K. & Harris, C. 1994: *The Periglaciation of Great Britain*. Cambridge
33 University Press, Cambridge, 330 pp.
34
35
36 Ballantyne, C. K. & McCarroll, D. 1995: The vertical dimensions of Late Devensian glaciation
37 on the mountains of Harris and SW Lewis, Outer Hebrides, Scotland. *Journal of Quaternary*
38 *Science* 10, 211–223.
39
40
41 Ballantyne, C. K. and Ó Cofaigh, C. 2017: The last Irish Ice Sheet: extent and chronology. In
42 Coxon, P., McCarron, S. & Mitchell, F. (eds.): *Advances in Irish Quaternary Studies*, 101–
43 149. Atlantis Advances in Quaternary Science 1, Atlantis, Paris.
44
45
46 Ballantyne, C. K. & Stone, J. O. 2009: Rock-slope failure at Baosbheinn, Wester Ross, NW
47 Scotland: age and interpretation. *Scottish Journal of Geology* 45, 177–181.
48
49
50 Ballantyne, C. K. & Stone, J. O. 2012: Did large ice caps persist on low ground in north-west
51 Scotland during the Lateglacial Interstade? *Journal of Quaternary Science* 27, 297–306.
52
53
54 Ballantyne, C. K. & Stone, J. O. 2015: Trimlines, blockfields and the vertical extent of the last
55 ice sheet in southern Ireland. *Boreas* 44, 277–287.
56
57
58
59
60

- 1
2
3 Ballantyne, C. K., Wilson, P., Gheorghiu, D. and Rodés, Á. 2014: Enhanced rock-slope failure
4 following ice-sheet deglaciation: timing and causes. *Earth Surface Processes and*
5 *Landforms* 39, 900–913.
6
7
8 Ballantyne, C. K., Wilson, P., Schnabel, C. & Xu, S. 2013: Lateglacial rock-slope failures in
9 NW Ireland: age, causes and implications. *Journal of Quaternary Science* 28, 412–420.
10
11
12 Baltzer, A., Holmes, R. & Evans, D. 1998. Debris flows on the Sula Sgeir Fan, NW of
13 Scotland. *Geological Society, London, Special Publications* 129, 105–115.
14
15
16 Benn, D. I. & Evans, D. J. A. 2010: *Glaciers and Glaciation*. Hodder, London, 802 pp.
17
18 Boulton, G. S. & Hagdorn, M. K. 2006: Glaciology of the British Isles Ice Sheet during the last
19 glacial cycle: form, flow, streams and lobes. *Quaternary Science Reviews* 25, 3359–3390.
20
21
22 Bradwell, T. & Stoker, M. S. 2015a. Asymmetric ice-sheet retreat pattern around northern
23 Scotland revealed by marine geophysical surveys. *Earth and Environmental Science*
24 *Transactions of the Royal Society of Edinburgh* 105, 297–322.
25
26
27 Bradwell, T. & Stoker, M. S. 2015b: Submarine sediment and landform record of a palaeo-ice
28 stream within the British-Irish Ice Sheet. *Boreas* 44, 255–276.
29
30
31 Bradwell, T. & Stoker, M. S. 2016. Glacial sediment and landform record offshore NW
32 Scotland: a fjord-shelf-slope transect through a Late Quaternary mid-latitude ice-stream
33 system. *Geological Society, London, Memoirs* 46, 421–428.
34
35
36 Bradwell, T., Stoker, M. S., Gолledge, N. R., Wilson, C. K., Merritt, J. W., Long, D., Everest,
37 J. D., Hestvik, O. B., Stevenson, A. G., Hubbard, A. L., Finlayson, A. G. & Mathers, H. E.
38 2008: The northern sector of the last British Ice Sheet: maximum extent and demise. *Earth-*
39 *Science Reviews* 88, 207–226.
40
41
42
43 Bradwell, T., Stoker, M. S. & Larter, R. 2007: Geomorphological signature and flow dynamics
44 of The Minch palaeo-ice stream, northwest Scotland. *Journal of Quaternary Science* 22,
45 609–617.
46
47
48
49 Carr, S., Holmes, R., van der Meer, J. J. M. & Rose, J. 2006: The last glacial maximum in the
50 North Sea Basin: micromorphological evidence of extensive glaciation. *Journal of*
51 *Quaternary Science* 21, 131–153.
52
53
54
55 Child, D., Elliott, G., Mifsud, C., Smith, A. & Fink, D. 2000: Sample Processing for Earth
56 Science Studies at ANTARES. *Nuclear Instruments & Methods in Physics Research*
57 *Section B-Beam Interactions with Materials and Atoms* 172, 856–860.
58
59
60

- 1
2
3 Chiverrell, R. C. & Thomas, G. S. P. 2010: Extent and timing of the Last Glacial Maximum
4 (LGM) in Britain and Ireland: a review. *Journal of Quaternary Science* 25, 535–549.
5
6 Chiverrell, R. C., Thrasher, I. M., Thomas, G. S. P., Lang, A., Scourse, J. D., van Landeghem,
7 K. J. J., McCarroll, D., Clark, C. D., Ó Cofaigh, C., Evans, D. J. A. & Ballantyne, C. K.
8 2013: Bayesian modelling of the retreat of the Irish Sea Ice Stream. *Journal of Quaternary*
9 *Science* 28, 200–209.
10
11 Clark, C. D., Hughes, A. L. C., Greenwood, S. L., Jordan, C. & Sejrup, H. P. 2012: Pattern and
12 timing of retreat of the last British-Irish Ice Sheet. *Quaternary Science Reviews* 44, 112–
13 146.
14
15 Clark, P. U. 1992. Surface form of the southern Laurentide Ice Sheet and its implications to
16 ice-sheet dynamics. *Geological Society of America Bulletin* 104, 595–605.
17
18 Clark, P. U., Dyke, A. S., Shakun, J.D., Carlson, A. E., Clark, J., Wohlfarth, B., Mitrovica, J. X.,
19 Hostetler, S. W. & McCabe, A. M. 2009. The Last Glacial Maximum. *Science* 325, 710–
20 714.
21
22 Cockburn, A. M. 1935: The geology of St. Kilda. *Transactions of the Royal Society of*
23 *Edinburgh* 58, 511–547.
24
25 Dove, D., Arioso, R., Finlayson, A.G., Bradwell, T. & Howe, J.A. 2015: Submarine glacial
26 landforms record Late Pleistocene ice-sheet dynamics, Inner Hebrides, Scotland.
27 *Quaternary Science Reviews* 123, 76–90.
28
29 Dunlop, P., Shannon, R., McCabe, A.M., Quinn, R. & Doyle, E. 2010: Marine geophysical
30 evidence for ice-sheet extension and recession on the Malin Shelf, new evidence for the
31 western limits of the British Irish Ice Sheet. *Marine Geology* 276, 86–99.
32
33 Everest, J. D., Bradwell, T., Stoker, M. & Dewey, S. 2013: New age constraints for the
34 maximum extent of the British-Irish Ice Sheet (NW sector). *Journal of Quaternary Science*
35 28, 2–7.
36
37 Fabel, D., Ballantyne, C.K. & Xu, S. 2012: Trimlines, blockfields, mountain-top erratics and
38 the vertical dimensions of the last British-Irish Ice Sheet in NW Scotland. *Quaternary*
39 *Science Reviews* 55, 91–102.
40
41 Flinn, D. 1978: The glaciation of the Outer Hebrides. *Geological Journal* 13, 195–199,
42
43
44
45
46
47
48
49
50
51
52
53
54
55
56
57
58
59
60

- 1
2
3
4
5
6
7
8
9
10
11
12
13
14
15
16
17
18
19
20
21
22
23
24
25
26
27
28
29
30
31
32
33
34
35
36
37
38
39
40
41
42
43
44
45
46
47
48
49
50
51
52
53
54
55
56
57
58
59
60
- Gibbard, P. L. & Clark, C. D. 2011: Pleistocene glacial limits in Great Britain. *In* Ehlers, J., Gibbard, P. L. & Hughes, P. D. (eds.): *Quaternary Glaciations: Extent and Chronology: a Closer Look*, 75–94. Elsevier, Amsterdam.
- Graham, A. G. C., Lonergan, L. & Stoker, M. S. 2007: Evidence for Late Pleistocene ice stream activity in the Witch Ground Basin, central North Sea, from seismic reflection data. *Quaternary Science Reviews* 26, 627–643.
- Graham, A. G. C., Lonergan, L. & Stoker, M. S. 2010. Depositional environments and chronology of Late Weichselian glaciation and deglaciation of the central North Sea. *Boreas* 39, 471–491.
- Hall, A. M. & Phillips, W. M. 2006: Glacial modification of granite tors in the Cairngorms, Scotland. *Journal of Quaternary Science* 21, 811–830.
- Harding, R. R., Merriman, R. J. & Nancarrow, P. H. A. 1984: St Kilda: an illustrated account of the geology. *British Geological Survey Report* 16 (7), 46 pp.
- Harris, C. 1987. Solifluction and related periglacial deposits in England and Wales. *In* Boardman, J. (ed.) *Periglacial Processes and Landforms in Britain and Ireland*, 209–224. Cambridge University Press, Cambridge.
- Heyman, J., Stroeven, A. P., Harbor, J. M. & Caffee, M. W. 2011: Too young or too old? evaluating cosmogenic exposure dating based on an analysis of compiled boulder exposure ages. *Earth and Planetary Science Letters* 302, 71–80.
- Hiemstra, J. F., Shakesby, R. A. & Vieli, A. 2015: Late Quaternary glaciation in the Hebrides sector of the continental shelf: was St Kilda over-run by the British-Irish Ice Sheet? *Boreas* 44, 178–196.
- Howe, J. A., Dove, D., Bradwell, T. & Gafeira, J. 2012. Submarine geomorphology and glacial history of the Sea of the Hebrides, UK. *Marine Geology* 315–318, 64–76.
- Hubbard, A., Bradwell, T., Gollledge, N. R., Hall, A. M., Patton, H., Sugden, D. E., Cooper, R. & Stoker, M. S. 2009: Dynamic cycles, ice streams and their impact on the extent, chronology and deglaciation of the British-Irish Ice Sheet. *Quaternary Science Reviews* 28, 758–776.
- Joughin, I., Tulaczyk, S., Bindschadler, R. & Price, S. F. 2002. Changes in west Antarctic ice stream velocities: observation and analysis. *Journal of Geophysical Research* 107, B11, 2289.

- 1
2
3 Kamb, B. 2001. Basal zone of the West Antarctic Ice Streams and its role in the lubrication of
4 their rapid motion. In Alley, R. B. & Bindshadler, R. A. (eds.): *The West Antarctic Ice*
5 *Sheet: Behavior and Environment*, 157–199. American Geophysical Union, Antarctic
6 Research Series, Volume 77.
7
8
9
10 Knutz, P. C., Austin, W. E. N. & Jones, E. J. W. 2001: Millennial-scale depositional cycles
11 related to British Ice sheet variability and North Atlantic paleocirculation since 45 kyr BP,
12 Barra Fan, U.K. margin. *Paleoceanography* 16, 53–64.
13
14
15 Kohl, C. P. & Nishiizumi, K. 1992: Chemical isolation of quartz for measurement of in situ-
16 produced cosmogenic nuclides. *Geochimica et Cosmochimica Acta* 56 (9), 3583–3587.
17
18
19 Kroon, D., Shimmield, G., Austin, W. E. N., Derrick, S., Knutz, P. & Shimmield, T. 2000:
20 Century-to millennial-scale sedimentological-geochemical records of the glacial-Holocene
21 sediment variations from the Barra Fan (NE Atlantic). *Journal of the Geological Society,*
22 *London* 157, 643–654.
23
24
25
26 Lambeck, K., Rouby, H., Purcell, A., Sun, Y. & Sambridge, M. 2014. Sea level and global ice
27 volumes from the Last Glacial Maximum to the Holocene. *Proceedings of the National*
28 *Academy of Sciences (PNAS)* 111, 15296–15303.
29
30
31 McCabe, A. M., Clark, P. U., Clark, J. & Dunlop, P. 2007: Radiocarbon constraints on
32 readvances of the British-Irish Ice sheet in the northern Irish Sea Basin during the last
33 deglaciation. *Quaternary Science Reviews* 26, 1204–1211.
34
35
36
37 Ó Cofaigh, C., Dunlop, P. & Benetti, S. A. 2012: Marine geophysical evidence for Late
38 Pleistocene ice sheet extent and recession off northwest Ireland. *Quaternary Science*
39 *Reviews* 44, 147–159.
40
41
42 Owen, M. J. & Long, D. 2016. Barra Fan: a major glacial depocentre on the western
43 continental margin of the British Isles. *Geological Society, London, Memoirs* 46, 359–360.
44
45
46 Paterson, W. S. B. 1994: *The Physics of Glaciers*. 3rd Edition. Pergamon, Oxford, 480 pp.
47
48 Peacock, J. D. 1984: Quaternary geology of the Outer Hebrides. *British Geological Survey*
49 *Reports* 16 (2), 47 pp.
50
51
52 Peacock, J. D. 1991: Glacial deposits of the Hebridean region. In Ehlers, J., Gibbard, P.L. &
53 Rose, J. (eds.): *Glacial Deposits in Great Britain and Ireland*, 109–119. Balkema,
54 Rotterdam.
55
56
57
58
59
60

- 1
2
3 Peacock, J. D., Austin, W. E. N., Selby, I., Graham, F. D. K., Harland, R. & Wilkinson I.P.
4 1992: Late Devensian and Flandrian palaeoenvironmental changes on the Scottish
5 continental shelf west of the Outer Hebrides. *Journal of Quaternary Science* 7, 145–161.
6
7
8 Peck, V. L., Hall, I. R., Zahn, R., Grousset, S. R., Hemming, S. R. & Scourse, J. D. 2007: The
9 relationship of Heinrich events and their European precursors over the past 60 ka BP: a
10 multi-proxy ice-rafted debris provenance study in the North East Atlantic. *Quaternary*
11 *Science Reviews* 26, 862–875.
12
13
14 Peters, C., Walden, J. & Austin, W. E. N. 2008: Magnetic signature of European margin
15 sediments: provenance of ice-rafted debris and the climatic response of the British ice sheet
16 during Marine Isotope Stages 2 and 3. *Journal of Geophysical Research: Earth Surface* 113,
17 F03007.
18
19
20
21
22 Peters, J. L., Benetti, S., Dunlop, P. & Ó Cofaigh, C. 2015: Maximum extent and dynamic
23 behaviour of the last British–Irish Ice Sheet west of Ireland. *Quaternary Science Reviews*
24 128, 48–68.
25
26
27
28 Putkonen, J. & Swanson, T. 2003: Accuracy of cosmogenic ages for moraines. *Quaternary*
29 *Research* 59, 255–261.
30
31
32 Rasmussen, S. O., Bigler, M., Blockley, S. P., Blunier, T., Buchardt, S. L., Clausen, H. B.,
33 Cvijanovic, I., Dahl-Jensen, D., Johnsen, S. J., Fischer, H., Gkinis, V., Guillevic, M., Hoek,
34 W. Z., Lowe, J. J., Pedro, J. B., Popp, T., Seierstad, I. K., Steffensen, J. P., Svensson, A. M.,
35 Vallelonga, P., Vinther, B. M., Walker, M. J. C., Wheatley, J. J. & Winstrup, M. 2014: A
36 stratigraphic framework for abrupt climatic changes during the Last Glacial period based on
37 three synchronized Greenland ice-core records: refining and extending the INTIMATE
38 event stratigraphy. *Quaternary Science Reviews* 106, 14–28.
39
40
41
42
43
44 Sanchez-Goñi, M. F. & Harrison, S. P. 2010: millennial-scale climate variability and
45 vegetation changes during the Last Glacial: concepts and terminology. *Quaternary Science*
46 *Reviews* 29, 2823–2827.
47
48
49 Scourse, J. D., Haapaniemi, A. I., Colmenero-Hidalgo, E., Peck, V. L., Hall, I. R., Austin, W.
50 E. N., Knutz, P. C. & Zahn, R. 2009: Growth, dynamics and deglaciation of the last British-
51 Irish ice sheet: the deep-sea ice-rafted detritus record. *Quaternary Science Reviews* 28,
52 3066–3084.
53
54
55
56 Sejrup, H. P., Clark, C. D. & Hjelstuen, B. O. 2016. Rapid ice sheet retreat triggered by ice
57 stream debuttressing: evidence from the North Sea. *Geology* 44, 355–358.
58
59
60

- 1
2
3 Sejrup, H. P., Hjelstuen, B. O., Dahlgren, K. I. T., Haflidason, H., Kuijpers, A., Nygård, A.,
4 Praeg, D., Stoker, M. S. & Vorren, T. O. 2005: Pleistocene glacial history of the NW
5 European continental margin. *Marine and Petroleum Geology* 22, 1111–1129.
6
7
8 Sejrup, H. P., Hjelstuen, B. O., Nygård, A., Haflidason, H. & Mardal, I. 2015. Late Devensian
9 ice-marginal features in the central North Sea – processes and chronology. *Boreas* 44, 1–13.
10
11 Sejrup, H. P., Nygård, A., Hall, A. M. & Haflidason, H. 2009. Middle and Late Weichselian
12 (Devensian) glaciation history of south-western Norway, North Sea and eastern UK.
13 *Quaternary Science Reviews* 28, 370–380.
14
15
16
17 Selby, I. 1989: *Quaternary Geology of the Hebridean Continental Margin*. Unpublished PhD
18 thesis, University of Nottingham.
19
20
21 Small, D., Rinterknecht, V., Austin, W. E. N., Bates, R., Benn, D. I., Scourse, J. D., Bourlès,
22 D., ASTER Team & Hibbert, F. D. 2016: Implications of ^{36}Cl exposure ages from Skye,
23 northwest Scotland for the timing of ice stream deglaciation and deglacial ice dynamics.
24 *Quaternary Science Reviews* 150, 130–145.
25
26
27
28 Stoker, M. S. 1995. The influence of glacial sedimentation on slope-apron development on
29 the continental margin off Northwest Britain. *Geological Society Special Publication* 90,
30 159–177.
31
32
33
34 Stoker, M. S. 2013. Cenozoic sedimentary rocks. In Hitchen, K. Johnson, H. & Gatliff, R. W.
35 (eds) *Geology of the Rockall Basin and adjacent areas*. British Geological Survey Research
36 Report RR/12/03, 159–177.
37
38
39
40 Stoker, M. S. & Bradwell, T. 2005: The Minch palaeo-ice stream, NW sector of the British-
41 Irish ice sheet. *Journal of the Geological Society* 163, 425–428.
42
43
44 Stoker, M. S. & Holmes, R. 1991: Submarine end-moraines as indicators of Pleistocene ice-
45 limits off northwest Britain. *Journal of the Geological Society of London* 148, 431–434.
46
47
48 Stoker, M. S., Hitchen, K. & Graham, C. C. 1993: The geology of the Hebrides and West
49 Shetland shelves, and adjacent deep-water areas, 149 pp. *British Geological Survey United*
50 *Kingdom Offshore Regional Report*. HMSO, London.
51
52
53 Stoker, M. S., Leslie, A. B., Scott, W. D., Briden, J. C. Hine, N. M., Harland, R., Wilkinson,
54 I. P., Evans, D. & Ardu, D. A. 1994. A record of late Cenozoic stratigraphy, sedimentation
55 and climate change from the Hebrides Slope, NE Atlantic Ocean. *Journal of the Geological*
56 *Society* 151, 96–137.
57
58
59
60

- 1
2
3 Stone, J. O., Allan, G. L., Fifield, K. L. & Cresswell, R. G. 1996. Cosmogenic Chlorine-36
4 From Calcium Spallation. *Geochimica et Cosmochimica Acta* 60, 679–692.
5
6 Stone, J. O. & Ballantyne, C. K. 2006: Dimensions and deglacial chronology of the Outer
7 Hebrides Ice Cap, northwest Scotland: implications of cosmic ray exposure dating. *Journal*
8 *of Quaternary Science* 21, 75–84.
9
10 Sutherland, D. G. 1984: The submerged landforms of the St Kilda Archipelago, western
11 Scotland. *Marine Geology* 58, 435–442.
12
13 Sutherland, D. G., Ballantyne, C. K. & Walker, M. J. C. 1984: Late Quaternary glaciation and
14 environmental change on St Kilda, Scotland, and their palaeoclimatic significance. *Boreas*
15 3, 261–272.
16
17 Von Weymarn, J. A. 1979: A new concept of glaciation in Lewis and Harris. *Proceedings of*
18 *the Royal Society of Edinburgh* 77B, 97–105.
19
20 Wager, L. R. 1953: The extent of glaciation in the island of St. Kilda. *Geological Magazine* 90,
21 177–181.
22
23 Whittington, G.W. & Hall, A.M. 2002: The Tolsta Interstadial, Scotland: correlation with D-O
24 cycles GI-8 to GI-5? *Quaternary Science Reviews* 21, 901–915.
25
26 Wilcken, K. M., Freeman, S. P. H. T., Schnabel, C., Binnie, S. A., Xu, S. & Phillips, R. J.
27 2013: ³⁶Cl accelerator mass spectrometry with a bespoke instrument. *Nuclear Instruments*
28 *and Methods in Physics Research B* 294, 107–114.
29
30 Wilson, L. J. & Austin, W. E. N. 2002: Millennial and sub-millennial-scale variability in
31 sediment colour from the Barra Fan, NW Scotland: implications for British ice sheet
32 dynamics. *Geological Society, London, Special Publication* 203, 349–365.
33
34 Wilson, L. J., Austin, W. E. N. & Jansen, E. 2002: The last British Ice Sheet: growth,
35 maximum extent and deglaciation. *Polar Research* 21, 243–250.
36
37 Wolff, E. W., Chappellaz, J., Blunier, T., Rasmussen, S. O. & Svensson, A. 2010: Millennial-
38 scale variability during the last glacial: the ice core record. *Quaternary Science Reviews* 29,
39 2828–2838.
40
41 Xu, S., Dougans, A. B., Freeman, S. P. H. T. & Schnabel, C. 2010: Improved ¹⁰Be and ²⁶Al-
42 AMS with a 5MV Spectrometer. *Nuclear Instruments and Methods in Physics Research B*
43 268, 736–738.
44
45
46
47
48
49
50
51
52
53
54
55
56
57
58
59
60

Captions to Figures

Fig. 1 Location of the St Kilda Archipelago and other sites mentioned in the text, showing the limit of the last ice sheet as depicted by Bradwell *et al.* (2008), trough-mouth fans and approximate flowlines of the Minch and Hebrides palaeo ice streams, based on Bradwell *et al.* (2007, 2008), and Dove *et al.* (2015).

Fig. 2 The island of Hirta, showing glacial features, tors and areas of rockfall debris, based partly on Sutherland *et al.* (1984). The location of samples selected for cosmogenic isotope surface exposure dating is also shown; bold numbers refer to sample numbers, which are prefixed by 'StK-' in Table 1.

Fig. 3 Generalized solid geology of Hirta, adapted from Harding *et al.* (1984).

Fig. 4 Sampled boulders. (a) Sample StK-10A: dolerite boulder resting on bedrock at 285 m altitude on Mullach Geal. (b) Sample StK-13: dolerite boulder at 62 m altitude in Gleann Mòr. (c) Sample StK-07: granite boulder at 58 m altitude in the Village Bay area. (d) Sample StK-22: dolerite boulder at 95 m altitude on the Village Bay lateral moraine.

Fig. 5 Summed normal kernel density estimates (solid line) of the observed exposure ages and their analytical uncertainties (dashed lines).

Fig. 6 Periglacial slope deposits up to 13 m thick resting on weathered bedrock on the western shore of Village Bay.

Fig. 7 (A) Bathymetric image of the Hebrides Shelf based on Olex AS (offshore) data and NextMap (onshore) data, reproduced from Bradwell *et al.* (2008) with permission from Elsevier. (B) Map of outer shelf moraines interpreted from (A) by Bradwell *et al.* (2008); (C) Reinterpretation of the moraines in the vicinity of St Kilda by Hiemstra *et al.* (2015), which suggests that broad lobes of ice formerly existed both north and south of the archipelago. (B) and (C) are reproduced with permission of John Wiley and Sons Ltd.

Fig. 8 Exposure ages of St Kilda samples plotted against the succession of stadial-interstadial events identified by Rasmussen *et al.* (2014) for the periods 15–40 ka and 70–95 ka in the Greenland stable isotope ice-core record. Interstadials are shaded. Horizontal lines for each exposure age represent $\pm 1\sigma$ uncertainties.

Table 1. Sample locations and properties

Sample	OS Grid Reference	Latitude (°N)	Longitude (°W)	Altitude m OD	Thickness mm	Density g cm ⁻³	Shielding correction	Boulder lithology	Isotope
<i>High-level perched boulders on Mullach Geal</i>									
StK-09	NF092996	57.8135	8.5852	295	70	2.8	0.9923	Dolerite	³⁶ Cl
StK-10A	NF092994	57.8131	8.5856	285	20	2.8	0.9923	Dolerite	³⁶ Cl
<i>Gleann Mór</i>									
StK-13	NA085001	57.8187	8.5976	62	50	2.8	0.9900	Gabbro	³⁶ Cl
StK-14	NF089996	57.8141	8.5914	124	50	2.8	0.9808	Gabbro	³⁶ Cl
<i>Village Bay area</i>									
StK-06	NF098995	57.8153	8.5695	87	15	2.6	0.9747	Granite	¹⁰ Be
StK-07	NF099994	57.8148	8.5708	58	40	2.6	0.9790	Granite	¹⁰ Be
StK-18	NF103996	57.8151	8.5676	91	25	2.6	0.9852	Granite	¹⁰ Be
StK-19	NF104994	57.8139	8.5654	76	23	2.6	0.9867	Granite	¹⁰ Be
<i>Village Bay lateral moraine</i>									
StK-22	NF097991	57.8101	8.5762	95	48	2.8	0.9780	Dolerite	³⁶ Cl
StK-23A	NF097991	57.8104	8.5766	90	10	2.8	0.9793	Gabbro	³⁶ Cl
StK-24	NF096991	57.8126	8.5779	115	45	2.8	0.9842	Dolerite	³⁶ Cl

Pre-Review Only

Table 2. Laboratory data and calculation of ^{10}Be exposure ages

Sample ID ¹	Quartz (g) ²	Be spike (μg) ³	$^{10}\text{Be}/^9\text{Be}$ ($\times 10^{-15}$) ^{4,5}	$[^{10}\text{Be}]$ (10^5 at g^{-1} SiO_2) ⁶	Surface exposure ages (ka)	
					CRONUS v2.3 with LLPR ⁷	CRONUScalc ⁸
<i>Village Bay area</i>						
StK-06	18.777	260.5 \pm 1.8	98.77 \pm 3.04	8.513 \pm 0.336	19.23 \pm (0.76) 1.14	19.20 \pm (0.76) 1.70
StK-07	21.316	255.4 \pm 1.8	90.95 \pm 2.70	6.727 \pm 0.267	15.90 \pm (0.63) 0.94	15.90 \pm (0.63) 1.40
StK-18	15.482	258.4 \pm 1.8	83.42 \pm 2.70	8.529 \pm 0.371	19.14 \pm (0.84) 1.18	19.10 \pm (0.84) 1.70
StK-19	16.218	259.1 \pm 1.8	206.5 \pm 5.05	21.29 \pm 0.594	48.77 \pm (1.36) 2.55	48.80 \pm (1.38) 4.10

¹ AMS targets were prepared at GU/SUERC and measured at SUERC AMS Laboratory. ² A density of 2.6 g cm^{-3} is used for all samples. ³ Be carrier concentration: 1642 \pm 12 $\mu\text{g/g}$. ⁴ $^{10}\text{Be}/^9\text{Be}$ isotope ratios are normalised to the NIST SRM Be standard assuming a $^{10}\text{Be}/^9\text{Be}$ nominal value of 2.79×10^{-11} . Uncertainties are reported at 1 σ confidence. ⁵ A procedural $^{10}\text{Be}/^9\text{Be}$ blank of $6.947 \pm 1.389 \times 10^{-15}$ is used to correct for background. ⁶ Propagated uncertainties include error in the blank and counting statistics. ⁷ ^{10}Be surface exposure ages calculated using the Lm scaling model in the CRONUS-Earth online calculator (<http://hess.ess.washington.edu/math/>) version 2.3, Wrapper script 2.3, Main calculator 2.1, Constants 2.3, Muons 1.1 (Balco *et al.* 2008) with the Loch Lomond sea level high latitude production rate (LLPR): 4.00 ± 0.17 at $\text{g}^{-1} \text{yr}^{-1}$ (Fabel *et al.* 2012). ⁸ ^{10}Be surface exposure ages calculated with the CRONUScalc online calculator (Moreno *et al.* 2016, version 1.0, wrapper script 0.2) using the Lm scaling method and default calibration data set. For both exposure age calculations we assume no atmospheric pressure anomalies, no significant erosion during exposure ($\epsilon = 0$ mm ka^{-1}), no prior exposure, and no temporal shielding (e.g. snow, sediment, soil, vegetation). Analytical uncertainties are given in parentheses; systematic uncertainties (after parentheses) include uncertainty of the ^{10}Be production rate and the ^{10}Be decay constant.

Table 3. Laboratory data and calculated ^{36}Cl exposure ages

Sample ID ¹	Sample (g) ²	Cl spike (g) ³	$[\text{Cl}]$ ($\mu\text{g/g}$) ⁴	^{36}Cl in blank (10^5 at) ⁵	$[^{36}\text{Cl}]$ (10^5 at g^{-1}) ⁶	Surface exposure age (ka) ⁷
<i>High-level perched boulders on Mullach Geal</i>						
StK-09	15.14	0.328	19.92 \pm 0.11	0.586 \pm 0.069	4.919 \pm 0.150	81.7 \pm (2.8) 8.2
StK-10A	16.06	0.337	10.26 \pm 0.05	0.602 \pm 0.103	4.991 \pm 0.135	81.5 \pm (2.5) 7.8
<i>Gleann Mòr</i>						
StK-13	16.23	0.337	35.98 \pm 0.27	1.109 \pm 0.906	1.566 \pm 0.053	32.0 \pm (1.7) 3.8
StK-14	13.87	0.337	10.17 \pm 0.06	1.109 \pm 0.906	1754 \pm 0.048	30.1 \pm (1.4) 2.9
<i>Village Bay lateral moraine</i>						
StK-22	14.06	0.339	82.52 \pm 1.01	0.602 \pm 0.103	1.364 \pm 0.058	19.4 \pm (1.0) 2.9
StK-23	11.79	0.338	215.37 \pm 5.35	0.602 \pm 0.103	2.435 \pm 0.107	18.8 \pm (1.1) 3.8
StK-24	15.21	0.330	45.36 \pm 0.97	0.679 \pm 0.120	1.352 \pm 0.078	19.8 \pm (1.2) 2.2

¹ AMS targets were prepared by NERC CIAF and measured at SUERC AMS Laboratory. ² A density of 2.8 g cm^{-3} is used for all samples. ³ Cl carrier concentration: 4.079 \pm 0.018 mg/g . ⁴ Total Cl concentrations in the samples were determined by AMS isotope dilution using a carrier solution with a $^{35}\text{Cl}/^{37}\text{Cl}$ ratio of 20.49 \pm 0.07 atoms/atom. ^{5,6} ^{36}Cl concentrations are normalised to Z93-0005 (PRIME Lab, Purdue) assuming a $^{36}\text{Cl}/\text{Cl}$ nominal value of 1.2×10^{-12} . Uncertainties are reported at 1 σ confidence and include error in the blank and counting statistics. ⁷ ^{36}Cl surface exposure ages calculated using the CRONUScalc online calculator (Moreno *et al.* 2016, version 2.0, main calculator 1.0, wrapper script 0.2) using the Lm scaling method and default calibration data set. Calculations assume no atmospheric pressure anomalies, no significant erosion during exposure ($\epsilon = 0$ mm ka^{-1}), no prior exposure, and no temporal shielding (e.g. snow, sediment, soil, vegetation). Analytical uncertainties are given in parentheses; systematic uncertainties (after parentheses) include uncertainty of the ^{36}Cl production rate and the ^{36}Cl decay constant.

Table 4. Effect of erosion rates on mean ages.

Sampling site (sample size)		Erosion rate (ϵ)			
		Zero	1 mm ka ⁻¹	2 mm ka ⁻¹	3 mm ka ⁻¹
Mullach Geal (n = 2)	UWM	81.6 ± 7.8	83.5 ± 8.4	89.8 ± 9.5	93.5 ± 11.6
	AM	81.6 ± 8.0	83.5 ± 8.6	89.8 ± 9.9	93.5 ± 12.0
Gleann Mòr (n = 2)	UWM	30.9 ± 3.2	30.5 ± 3.2	30.8 ± 3.3	31.0 ± 3.4
	AM	31.1 ± 3.4	30.6 ± 3.4	30.8 ± 3.5	31.0 ± 3.6
Village Bay (n = 5)	UWM	19.2 ± 2.2	19.1 ± 2.2	19.0 ± 2.2	18.9 ± 2.2
	AM	19.3 ± 2.5	19.1 ± 2.4	19.0 ± 2.4	19.0 ± 2.4

UWM: uncertainty-weighted mean. AM: Arithmetic mean.

For Review Only

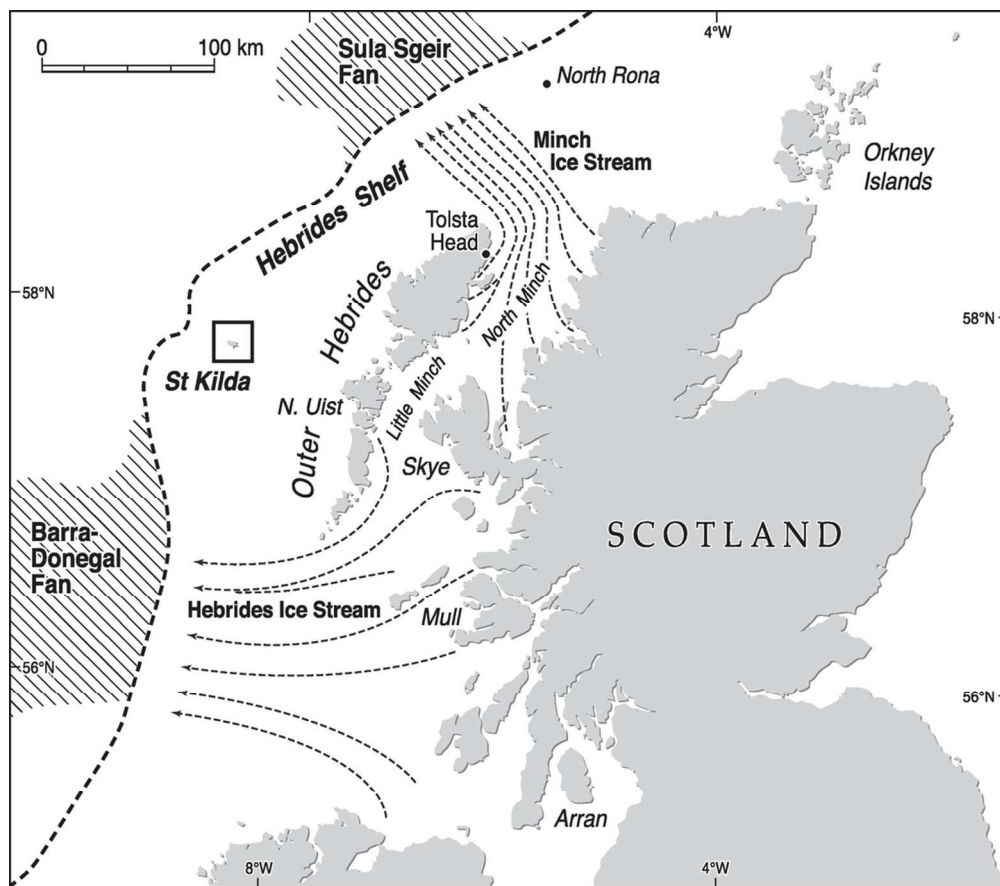


Fig. 1 Location of the St Kilda Archipelago and other sites mentioned in the text, showing the limit of the last ice sheet as depicted by Bradwell et al. (2008), trough-mouth fans and approximate flowlines of the Minch and Hebrides palaeo ice streams, based on Bradwell et al. (2007, 2008), and Dove et al. (2015).

97x85mm (300 x 300 DPI)



1
2
3
4
5
6
7
8
9
10
11
12
13
14
15
16
17
18
19
20
21
22
23
24
25
26
27
28
29
30
31
32
33
34
35
36
37
38
39
40
41
42
43
44
45
46
47
48
49
50
51
52
53
54
55
56
57
58
59
60

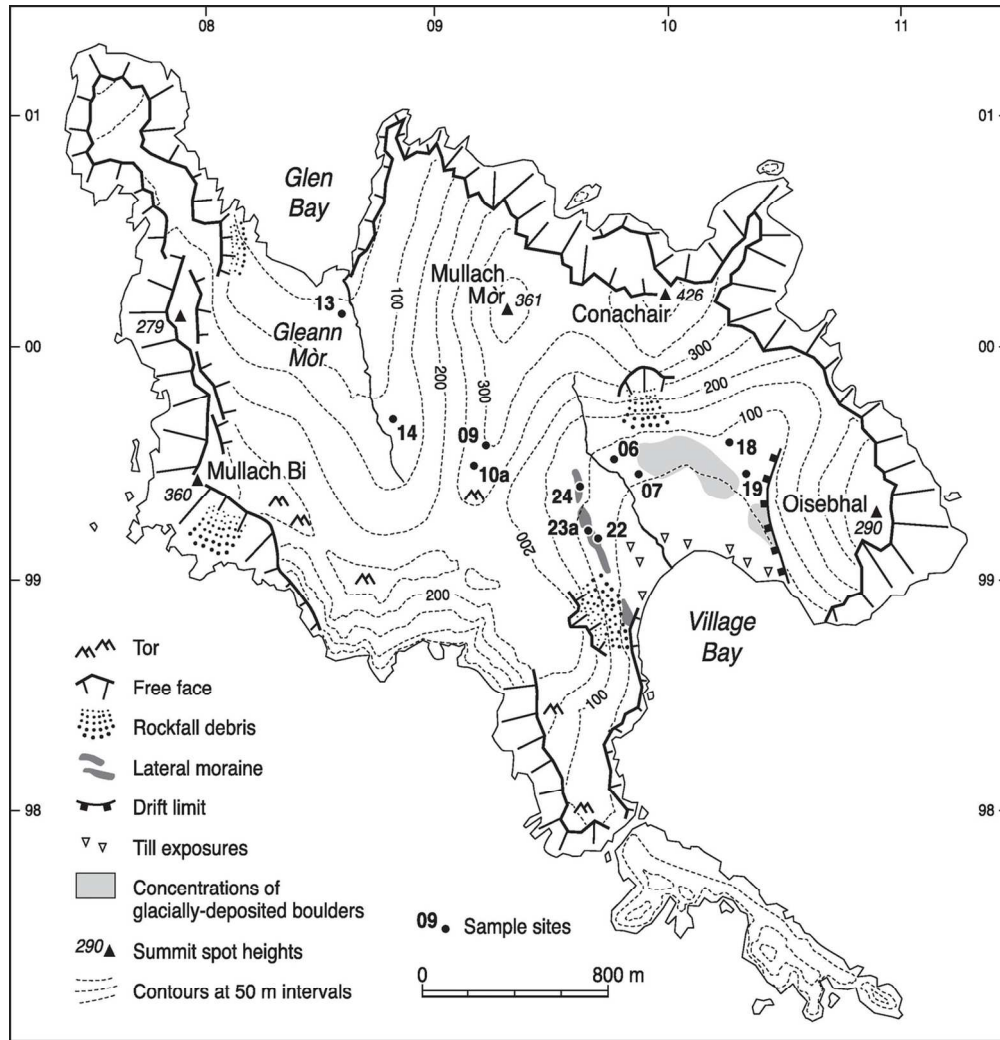
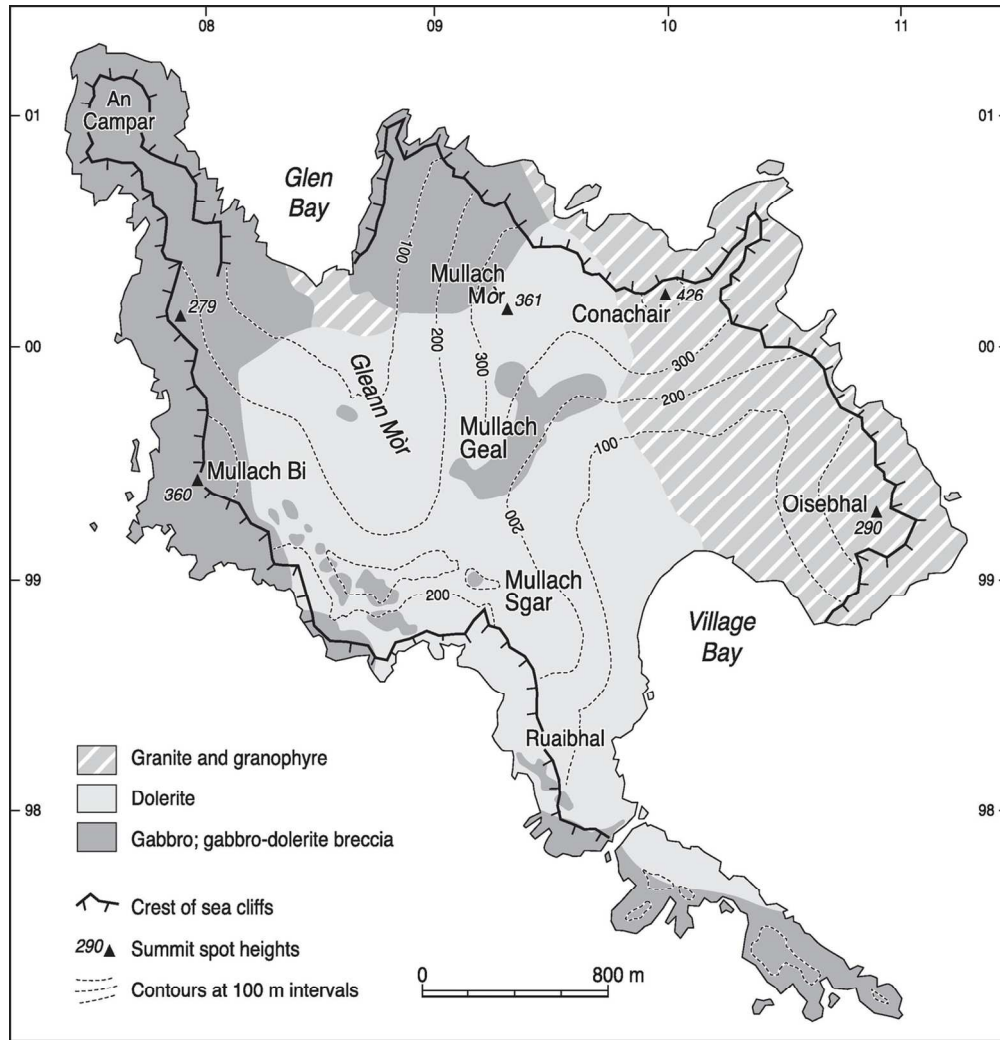


Fig. 2 The island of Hirta, showing glacial features, tors and areas of rockfall debris, based partly on Sutherland et al. (1984). The location of samples selected for cosmogenic isotope surface exposure dating is also shown; numbers refer to sample numbers, which are prefixed by 'StK-' in Table 1.

119x128mm (300 x 300 DPI)

1
2
3
4
5
6
7
8
9
10
11
12
13
14
15
16
17
18
19
20
21
22
23
24
25
26
27
28
29
30
31
32
33
34
35
36
37
38
39
40
41
42
43
44
45
46
47
48
49
50
51
52
53
54
55
56
57
58
59
60

1
2
3
4
5
6
7
8
9
10
11
12
13
14
15
16
17
18
19
20
21
22
23
24
25
26
27
28
29
30
31
32
33
34
35
36
37
38
39
40
41
42
43
44
45
46
47
48
49
50
51
52
53
54
55
56
57
58
59
60



Contains Ordnance Survey data (c) Crown copyright and database right 2010.
An Ordnance Survey/EDINA supplied service.

Fig. 3 Generalized solid geology of Hirta, adapted from Harding et al. (1984).

119x128mm (300 x 300 DPI)



Fig. 4 Sampled boulders. (a) Sample StK-10A: dolerite boulder resting on bedrock at 285 m altitude on Mullach Geal. (b) Sample StK-13: dolerite boulder at 62 m altitude in Gleann Mòr. (c) Sample StK-07: granite boulder at 58 m altitude in the Village Bay area. (d) Sample StK-22: dolerite boulder at 95 m altitude on the Village Bay lateral moraine.

161x122mm (300 x 300 DPI)

1
2
3
4
5
6
7
8
9
10
11
12
13
14
15
16
17
18
19
20
21
22
23
24
25
26
27
28
29
30
31
32
33
34
35
36
37
38
39
40
41
42
43
44
45
46
47
48
49
50
51
52
53
54
55
56
57
58
59
60

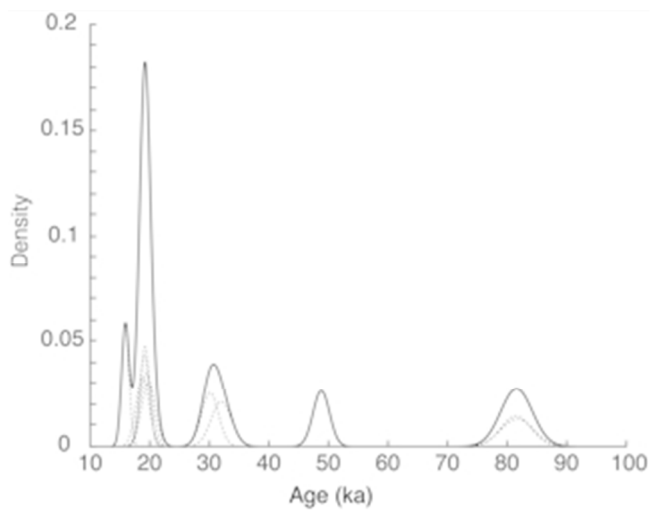


Fig. 5 Summed normal kernel density estimates (solid line) of the observed exposure ages and their analytical uncertainties (dashed lines).

27x21mm (300 x 300 DPI)

Review Only

1
2
3
4
5
6
7
8
9
10
11
12
13
14
15
16
17
18
19
20
21
22
23
24
25
26
27
28
29
30
31
32
33
34
35
36
37
38
39
40
41
42
43
44
45
46
47
48
49
50
51
52
53
54
55
56
57
58
59
60



Fig. 6 Periglacial slope deposits up to 13 m thick resting on weathered bedrock on the western shore of Village Bay.

86x50mm (180 x 180 DPI)

ew Only

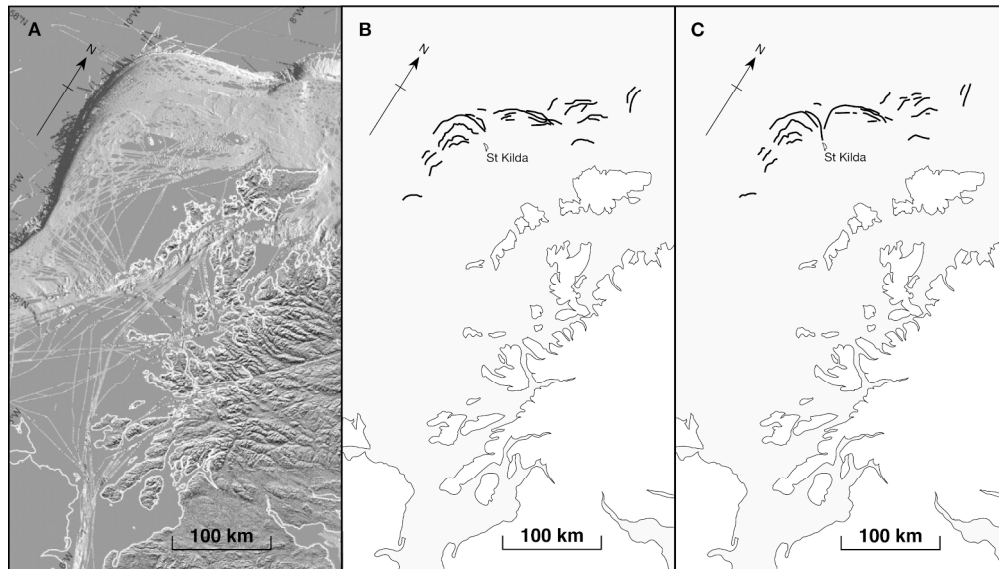


Fig. 7 (A) Bathymetric image of the Hebrides Shelf based on Olex AS (offshore) data and NextMap (onshore) data, reproduced from Bradwell et al. (2008) with permission from Elsevier. (B) Map of outer shelf moraines interpreted from (A) by Bradwell et al. (2008); (C) Reinterpretation of the moraines in the vicinity of St Kilda by Hiemstra et al. (2015), which suggests that broad lobes of ice formerly existed both north and south of the archipelago. (B) and (C) are reproduced with permission of John Wiley and Sons Ltd.

206x119mm (300 x 300 DPI)

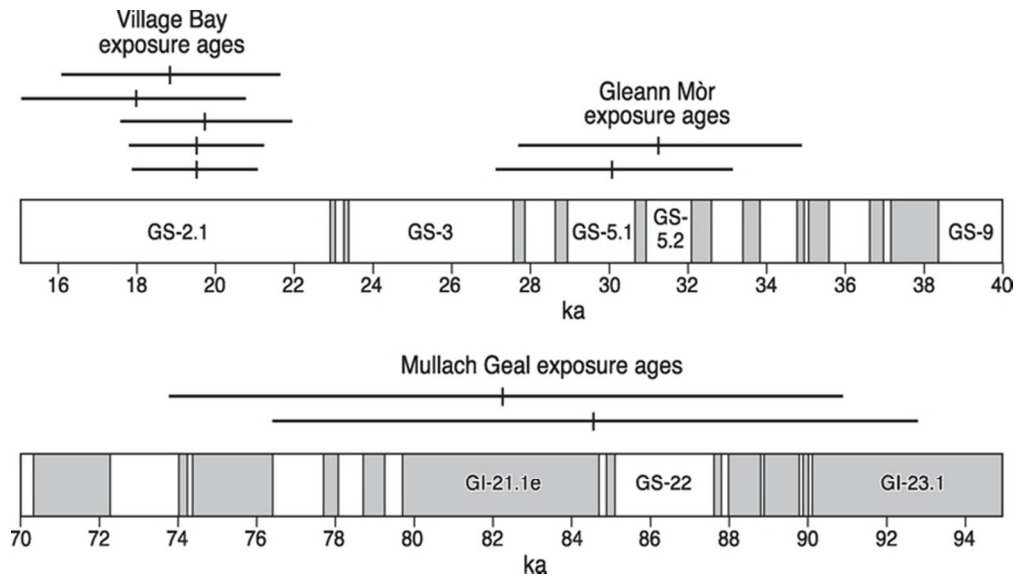


Fig. 8 Exposure ages of St Kilda samples plotted against the succession of stadial-interstadial events identified by Rasmussen et al. (2014) for the periods 15–40 ka and 70–95 ka in the Greenland stable isotope ice-core record. Interstadials are shaded. Horizontal lines for each exposure age represent $\pm 1\sigma$ uncertainties.

64x36mm (300 x 300 DPI)

ew Only

1
2
3
4
5
6
7
8
9
10
11
12
13
14
15
16
17
18
19
20
21
22
23
24
25
26
27
28
29
30
31
32
33
34
35
36
37
38
39
40
41
42
43
44
45
46
47
48
49
50
51
52
53
54
55
56
57
58
59
60