

Precise masses for the transiting planetary system HD 106315 with HARPS [★]

S. C. C. Barros^{1**}, H. Gosselin^{2,23}, J. Lillo-Box³, D. Bayliss⁴, E. Delgado Mena¹, B. Brugger², A. Santerne², D. J. Armstrong⁵, V. Adibekyan¹, J. D. Armstrong⁶, D. Barrado⁷, J. Bento⁸, I. Boisse², A. S. Bonomo⁹, F. Bouchy⁴, D. J. A. Brown⁵, W. D. Cochran¹⁰, A. Collier Cameron¹¹, M. Deleuil², O. Demangeon¹, R. F. Díaz^{4,12,13}, A. Doyle⁵, X. Dumusque⁴, D. Ehrenreich⁴, N. Espinoza^{14,15}, F. Faedi⁵, J. P. Faria^{1,16}, P. Figueira¹, E. Foxell⁵, G. Hébrard^{17,18}, S. Hoggatpanah^{1,16}, J. Jackman⁵, M. Lendl¹⁹, R. Ligi², C. Lovis⁴, C. Melo³, O. Mousis², J. J. Neal^{1,16}, H. P. Osborn⁵, D. Pollacco⁵, N. C. Santos^{1,16}, R. Sefako²⁰, A. Shporer²¹, S. G. Sousa¹, A. H. M. J. Triaud²², S. Udry⁴, A. Vigan², and A. Wyttenbach⁴

¹ Instituto de Astrofísica e Ciências do Espaço, Universidade do Porto, CAUP, Rua das Estrelas, PT4150-762 Porto, Portugal e-mail: susana.barros@astro.up.pt

² Aix Marseille Univ, CNRS, LAM, Laboratoire d'Astrophysique de Marseille, Marseille, France

³ European Southern Observatory (ESO), Alonso de Cordova 3107, Vitacura, Casilla 19001, Santiago de Chile, Chile

⁴ Observatoire Astronomique de l'Université de Genève, 51 Chemin des Maillettes, 1290 Versoix, Switzerland

⁵ Department of Physics, University of Warwick, Gibbet Hill Road, Coventry, CV4 7AL, UK

⁶ Institute for Astronomy, University of Hawaii, 34 Ohia Ku Street, Pukalani, Maui, Hawaii 96790

⁷ Depto. de Astrofísica, Centro de Astrobiología (CSIC-INTA), ESAC campus 28692 Villanueva de la Cañada (Madrid), Spain

⁸ Research School of Astronomy and Astrophysics, Australian National University, Mount Stromlo Observatory, Cotter Road, Weston Creek, ACT 2611, Australia

⁹ INAF – Osservatorio Astrofisico di Torino, Strada Osservatorio 20, I-10025, Pino Torinese (TO), Italy

¹⁰ McDonald Observatory and Department of Astronomy, The University of Texas at Austin, Austin Texas USA

¹¹ Centre for Exoplanet Science, SUPA School of Physics & Astronomy, University of St Andrews, North Haugh ST ANDREWS, Fife, KY16 9SS

¹² Universidad de Buenos Aires, Facultad de Ciencias Exactas y Naturales. Buenos Aires, Argentina

¹³ CONICET - Universidad de Buenos Aires. Instituto de Astronomía y Física del Espacio (IAFE). Buenos Aires, Argentina.

¹⁴ Instituto de Astrofísica, Facultad de Física, Pontificia Universidad Católica de Chile, Av. Vicuña Mackenna 4860, 782-0436 Macul, Santiago, Chile

¹⁵ Millennium Institute of Astrophysics, Av. Vicuña Mackenna 4860, 782-0436 Macul, Santiago, Chile

¹⁶ Departamento de Física e Astronomia, Faculdade de Ciências, Universidade do Porto, Rua Campo Alegre, 4169-007 Porto, Portugal

¹⁷ Institut d'Astrophysique de Paris, UMR7095 CNRS, Université Pierre & Marie Curie, 98bis boulevard Arago, 75014 Paris, France

¹⁸ Aix Marseille Univ, CNRS, OHP, Observatoire de Haute Provence, Saint Michel l'Observatoire, France

¹⁹ Space Research Institute, Austrian Academy of Sciences, Schmiedlstr. 6, 8042, Graz, Austria

²⁰ South African Astronomical Observatory, PO Box 9, Observatory, 7935

²¹ Division of Geological and Planetary Sciences, California Institute of Technology, Pasadena, CA 91125, USA

²² Institute of Astronomy, University of Cambridge, Madingley Road, CB3 0HA, Cambridge, United Kingdom

²³ Université de Toulouse, UPS-OMP, IRAP, Toulouse, France

Received ??, ??; accepted ??

ABSTRACT

Context. The multi-planetary system HD 106315 was recently found in K2 data. The planets have periods of $P_b \sim 9.55$ and $P_c \sim 21.06$ days, and radii of $r_b = 2.44 \pm 0.17 R_\oplus$ and $r_c = 4.35 \pm 0.23 R_\oplus$. The brightness of the host star ($V=9.0$ mag) makes it an excellent target for transmission spectroscopy. However, to interpret transmission spectra it is crucial to measure the planetary masses.

Aims. We obtained high precision radial velocities for HD 106315 to determine the mass of the two transiting planets discovered with Kepler K2. Our successful observation strategy was carefully tailored to mitigate the effect of stellar variability.

Methods. We modelled the new radial velocity data together with the K2 transit photometry and a new ground-based partial transit of HD 106315c to derive system parameters.

Results. We estimate the mass of HD 106315b to be $12.6 \pm 3.2 M_\oplus$ and the density to be $4.7 \pm 1.7 \text{ g cm}^{-3}$, while for HD 106315c we estimate a mass of $15.2 \pm 3.7 M_\oplus$ and a density of $1.01 \pm 0.29 \text{ g cm}^{-3}$. Hence, despite planet c having a radius almost twice as large as planet b, their masses are consistent with one another.

Conclusions. We conclude that HD 106315c has a thick hydrogen-helium gaseous envelope. A detailed investigation of HD 106315b using a planetary interior model constrains the core mass fraction to be 5-29%, and the water mass fraction to be 10-50%. An alternative, not considered by our model, is that HD 106315b is composed of a large rocky core with a thick H-He envelope. Transmission spectroscopy of these planets will give insight into their atmospheric compositions and also help constrain their core compositions.

Key words. planetary systems: detection – planetary systems: fundamental parameters – planetary systems: composition – stars: individual HD 106315, EPIC 201437844 – techniques: photometric – techniques: radial velocities

1. Introduction

The field of exoplanets has been revolutionised by the discovery of ~ 5000 planetary candidates by the *Kepler* space mission (Borucki et al. 2010). *Kepler* revealed the existence of a large diversity of exoplanets and enabled the discovery of planets even smaller than the Earth (e.g. Barclay et al. 2013; Jontof-Hutter et al. 2015). Surprisingly, it also showed that the most common type of planets with periods less than 100 days have sizes of 1.5–4 R_{\oplus} (between those of the Earth and Neptune) (Fressin et al. 2013), which do not exist in the solar system. In turn, radial velocity surveys had already found that planets with low masses were more common (Mayor et al. 2011).

Recently, much interest has been devoted to gaining insight into the composition of these planets. Formation and compositions theories predict that planets are made of four main components: H-He, ices, silicates, and iron-nickel (e.g. Seager et al. 2007). Different combinations of these materials result in a wide range of possible radii for a given planetary mass. While planets larger than Neptune are expected to be mainly gaseous and planets equal to or smaller than the Earth are expected to be rocky, planets with sizes of 1.5–4 R_{\oplus} can have compositions ranging from gaseous mini Neptunes, to water worlds, to rocky super-Earths (Rogers et al. 2011; Léger et al. 2004; Valencia et al. 2006; Seager et al. 2007; Rogers 2015). Due to the faintness of the host stars in the *Kepler* field, it was only possible to derive accurate masses for relatively few of the *Kepler* candidates in the small radii regime. For the brightest stars it has been possible to derive mass and radius with sufficient accuracy to reveal a large diversity of planetary compositions (Carter et al. 2012; Marcy et al. 2014; Barros et al. 2014; Haywood et al. 2014; Dressing et al. 2015; Malavolta et al. 2017). Interestingly, planets with very similar radii have very diverse densities like, for example, Kepler-11f ($\rho = 0.7 \pm 0.4 \text{ g cm}^{-3}$, $r_p = 2.61 \pm 0.025$, Lissauer et al. 2011) and Kepler-10c ($\rho = 7.1 \pm 1.0 \text{ g cm}^{-3}$, $r_p = 2.35 \pm 0.05$, Dumusque et al. 2014). To better understand the diversity of planetary composition in this size regime, a larger sample of exoplanets with well-constrained mass and radius is needed. A better insight into planetary composition will also make it possible to constrain planetary formation processes, since the two alternative planetary formation theories, namely core accretion (Lissauer 1993) and gravitational instability models (Nayakshin 2017), predict different metal-gas ratio compositions.

Moreover, a statistically significant sample of well-characterised low-mass planets will help to better constrain the transition between rocky and gaseous planets. The determination of the transition between rocky and gaseous planets is a way to constrain the formation theories of small planets and has implications for habitability (Alibert 2014). Recent studies point to the transition being at 1.6 R_{\oplus} (Weiss & Marcy 2014; Rogers 2015; Fulton et al. 2017), although they rely on small number statistics and hence they have a large uncertainty.

Planets with sizes between super-Earths and Neptune (1.5–4 R_{\oplus}) are also very interesting targets for transmission spectroscopy. Fortunately, it will be possible to explore the atmospheres of low-mass planets with next generation instruments like the James Webb Space Telescope (JWST) and the Extremely Large Telescope (ELT), and the proposed exoplanet characterisation space missions like Fast Infrared Exoplanet Spec-

troscopy Survey Explorer (FINESSE) and Atmospheric Remote-sensing Exoplanet Large-survey (Ariel). The interpretation of atmospheric measurements requires precise determination of the planetary surface gravity (Batalha et al. 2017). Therefore, it requires the measurement of both precise radius and mass for the planets.

For all these reasons, we started the follow-up of K2 (Howell et al. 2014) low-mass planetary candidates with the High Accuracy Radial velocity Planet Searcher (HARPS) spectrograph (Mayor et al. 2003). Due to its large combined field of view, K2 is finding a higher number of low-mass planets around bright stars. These bright host stars allow the derivation of planetary masses with good precision and facilitate future atmospheric follow-up observations.

The multi-planetary system HD 106315 (EPIC 201437844) was observed by K2 Campaign 10. Two teams simultaneously announced the discovery of two planets with small radii (Crossfield et al. 2017; Rodriguez et al. 2017). The inner planet, HD 106315b, has a period of 9.55 days and a radius of $\sim 2.4 R_{\oplus}$, while HD 106315c, the outer planet, has a period of 21.05 days and a radius of $\sim 4.2 R_{\oplus}$. Crossfield et al. (2017) obtained radial velocities of HD 106315, which did not constrain the mass of either planet but revealed a long term trend that suggests the presence of an additional third body in the system. The host star, HD 106315, has $V=9.0$ mag, which is currently the third brightest planet host star found by K2. The brightness of the host star and the size of both planets make it an interesting target since an accurate mass determination should be achievable with HARPS.

This planetary system is also interesting because HD 106315c is one of the few small planet cases for which a measurement of the obliquity of the host star is possible with current facilities (Rodriguez et al. 2017) using the Rossiter-McLaughlin (RM) effect (Rossiter 1924; McLaughlin 1924). Measured obliquities in hot Jupiters have led to insight into hot-Jupiter migration mechanisms and the interaction between star and planet, which shape planetary systems. It was shown that hot-Jupiter host stars' obliquities depend on the tidal dissipation timescale (Albrecht et al. 2012), which in turn depends on the stellar effective temperature, planet-to-star mass ratio, and scaled orbital distance. This supports planet-planet scattering as the migration mechanism for hot Jupiters, since it predicts the misalignment of the orbits (Weidenschilling & Marzari 1996; Rasio & Ford 1996; Ford & Rasio 2008). It is not yet known if a similar trend occurs for smaller mass planets. HD 106315 is a F5V type star with $T_{\text{eff}} \sim 6260$ K, which is above the suggested transition temperature between systems with different regimes of the tidal dissipation timescale (Winn et al. 2010). This, combined with the low planet-to-star mass ratio, makes it an extremely interesting system to measure the RM effect.

In this paper we present radial velocity observations of HD 106315 taken with HARPS, which allow for the derivation of the mass of HD 106315b and HD 106315c. A state of the art interior model is used to depict the possible interiors of the planets, giving insight into their interior compositions. We report our observations in Section 2 and present the stellar characterisation in Section 3. In Section 4 we describe our method to analyse the radial velocities together with the photometric data and present the results in Section 4. Finally we discuss the results in Section 5.

* Based on observations collected at the European Organisation for Astronomical Research in the Southern Hemisphere under ESO programme 198.C-0168.

** E-mail: susana.barros@astro.up.pt.

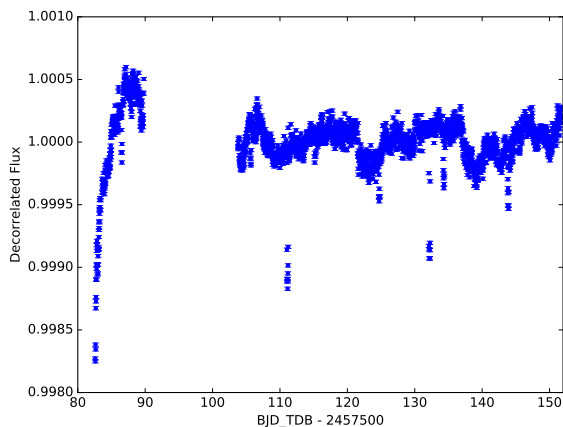


Fig. 1. K2 detrended light curve of HD 106315 showing short term variability and two sets of transits.

2. Observations

2.1. K2 photometry

HD 106315 (EPIC 201437844) was observed during Campaign 10 of the K2 mission, in long cadence mode, between 2016 July 6 and 2016 September 20, spanning ~ 80 days. However, during the first six days of Campaign 10 there was a pointing error of 3.5-pixels preventing high precision photometry, so we did not reduce this data. Furthermore, on 2016 July 20 one of the modules failed leading to the telescope going into safe mode and resulting in a 14-day gap in the observations. Therefore, Campaign 10 has slightly less data than previous campaigns. We downloaded the pixel data from the Mikulski Archive for Space Telescopes (MAST).¹ We reduced the pixel data and extracted the light curves using the Planet candidates from Optimal Aperture Reduction (POLAR) pipeline. The POLAR pipeline has some routines that are part of the CONvection ROTation and planetary Transits (CoRoT) imagette pipeline (Barros et al. 2014). A full description of the POLAR pipeline is given in Barros et al. (2016). The POLAR reduced light curves up to Campaign 6 are publicly available through the MAST.² The K2 light curve of HD 106315 is presented in Figure 1. The light curve is dominated by red noise due to granulation and we cannot find a clear rotation period. Moreover, the K2 light curve shows two sets of planetary signals that were previously reported by Crossfield et al. (2017) and Rodriguez et al. (2017). Planet b shows a transit depth of 297 ± 34 ppm, while planet c shows a transit depth of 944 ± 21 ppm. The phase folded transits of K2 for both planets, together with the best transit model presented in Section 5, are shown in Figure 2. The stellar-activity-filtered final light curve has a robust rms of 55ppm.

2.2. Follow-up photometry

In order to help constrain the orbital period and phase of HD 106315c, we monitored the transit on the night of 2017 March 8 from Cerro Tololo Inter-American Observatory (CTIO), Chile, with one of the three LCO (Las Cumbres Observatory) 1 m telescopes located at that site. LCO operates a network of fully automated 1 m telescopes (Brown et al. 2013) equipped with

custom built imaging cameras (Sinistro³) with back-illuminated 4K \times 4K Fairchild Imaging CCDs (charged-coupled device) with 15 μ m pixels (CCD486 BI). With a plate scale of 0.387''/pixel, the Sinistro cameras deliver a field of view of 26.6' \times 26.6', which is important for reference stars when monitoring bright stars such as HD 106315. The cameras are read out by four amplifiers with 1 \times 1 binning, with a readout time of ≈ 45 s. We used the *i*-band filter, with exposure times of 30 s. Images were reduced by the standard LCO pipeline (Brown et al. 2013), and aperture photometry was performed in the manner set out in Penev et al. (2013). The phase folded light curve as well as the best fit model that we present in Section 5 are shown in Figure 3. The transit shows an egress with a depth and timing consistent with the predicted ephemeris from the K2 data.

2.3. HARPS radial velocity observations

We observed the target star HD 106315 with the HARPS spectrograph, which is mounted on the ESO-3.6m telescope in La Silla Observatory (Chile), with the aim of detecting the mass of the two transiting planets. Since the star is relatively hot and fast-rotating, measuring precise radial velocities is challenging (Rodriguez et al. 2017). Crossfield et al. (2017) performed a first radial velocity follow-up of this target with the HiRes spectrograph at the Keck telescope. They used exposure times of three to six minutes, and observed a large rms at the level of 6.4 m s⁻¹. Hot stars are known to have large variability caused by granulation and p-modes (Dumusque et al. 2011). We estimated that p-modes have timescale of about 20 minutes, as in the case of Procyon (Bouchy et al. 2004). To average out the oscillation and granulation noises in the spectra, we used exposure times of 30 minutes and observed the target several times during the night with a few hours between exposures. We collected 93 spectra of HD 106315 with HARPS from 2017 January 26 to 2017 May 4, as part of our ESO-K2 large programme (Programme ID 198.C-0169). We rejected eight spectra because they were significantly affected by the Moon background light (Bonomo et al. 2010) or taken at high airmass (>1.7). We complemented our time series with 46 out-of-transit spectra taken as part of the HEARTS programme (Wytenbach et al. 2017) on HARPS (programme ID 098.C-0304) during two transits of planet c. These data have an exposure time of five minutes during the first night and eight minutes during the second night. For this dataset we excluded observations that were taken with airmass higher than 1.7. All the HARPS spectra were reduced with the HARPS pipeline consistently. Radial velocities were derived by cross-correlating the spectra with a template of a G2V star (Baranne et al. 1996; Pepe et al. 2002). Radial velocity photon noise was estimated based on the work of Bouchy et al. (2001). We also measured the full width half maximum (FWHM) and the bisector inverse slope (BIS), and estimated their uncertainty as suggested in Santerne et al. (2015). All the radial velocity products are reported in Table .1. To mitigate the effect of stellar variability in the HEARTS data, for the final analysis we binned them to the same exposure time as the rest of the HARPS data (30 minutes), resulting in four points in the first night after the transit and four points in the second night before the transit.

We fitted the cross-correlation function with a rotation profile as described in Santerne et al. (2012) and derived a stellar $v \sin i = 12.71 \pm 0.4$ km s⁻¹. This, combined with the stellar radius given in Table 2, gives a rotation period of 5.15 ± 0.28 d (if $i=90$). Using the S_{MW} values and the calibration as described by

¹ https://archive.stsci.edu/k2/data_search/search.php.

² <https://archive.stsci.edu/prepds/polar/>.

³ <https://lco.global/observatory/instruments/sinistro/>.

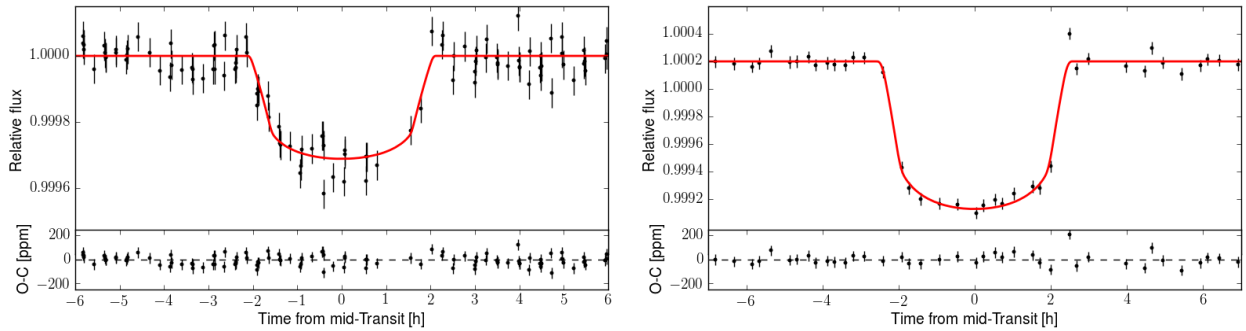


Fig. 2. Phase folded K2 light curve of HD 106315b (left panel) and HD 106315c (right panel). We overplot the best fitted model presented in Table 2

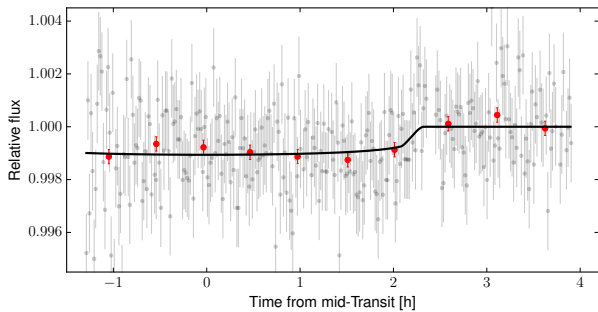


Fig. 3. Phase folded LCO light curve of HD 106315c taken with the *i'* filter. We overplot the best fitted model presented in Table 2. We also overplot the binned light curve at 30 minute cadence. The residuals of the binned light curve show an rms of 219.0 ppm.

Noyes et al. (1984) and Lovis et al. (2011), we derived an activity index of $\log R'_{\text{HK}} = -4.888 \pm 0.008$. Given that the distance to HD 106315 is higher than 100pc (Section 4), we checked whether interstellar clouds could be artificially decreasing the measured $\log R'_{\text{HK}}$. In our final fit we find a value for the extinction of $0.0049^{+0.008}_{-0.004}$ mag; this value was confirmed by using the galaxy maps by Green et al. (2015), which estimate the extinction is lower than 0.01. Therefore, we do not expect a bias of the $\log R'_{\text{HK}}$ given the low extinction.

The radial velocity observations show a clear variation phased with the fitted periods of the planets from the K2 photometry. The HARPS RVs together with the best fit Keplerian model (section 5) are shown in Figure 4. In Figure 5, we show the periodogram of the residual of the radial velocities after subtracting the best fit model. We find no other significant peaks in the periodogram, and hence no other planet in the system is detected.

2.4. Lucky imaging

We observed HD 106315 with the high spatial resolution camera AstraLux (Hormuth et al. 2008) installed at the 2.2m telescope of Calar Alto Observatory (Almaría, Spain). This instrument applies the lucky-imaging technique (Fried 1978) to avoid atmospheric distortions by obtaining thousands of short-exposure (below the atmospheric coherence time scale) images and selecting the best-quality ones based on the Strehl-ratio (Strehl 1902). In this case, we obtained 70 000 images of 30 ms exposure time in the SDSS (sloan digital sky survey) *i*-band and selected the best 10% of them. We used the observatory pipeline to perform the

basic reduction of the images, measure their Strehl ratio, select the best-quality frames, and finally align them and combine them to obtain the final high spatial resolution image. In this final image, we find no additional companions up to 12 arcsec within the sensitivity limits. In Figure 6 we show the sensitivity curve determined following the process explained in Lillo-Box et al. (2014), based on the injection of artificial stars into the image at different angular separations and position angles, and measuring the retrieved stars based on the same detection algorithms used to look for real companions.

Due to HD 106315 being saturated in K2, the best aperture used to extract the photometry is quite large, with a maximum eight pixels in the *x* direction and 17 pixels in the *y* direction that correspond to 32x68 arcsec. Since this aperture is larger than the field of view of AstraLux (24x24 arcsec), we also checked for companions that could be inside the K2 aperture using archival images. In Figure 7 we overlay the K2 aperture, the AstraLux image, and the SDSS *r'* band image. Detected sources are marked with red circles in the image. We find a star at the edge of the K2 aperture (marked with a blue circle) that is 11 mag fainter than the target in the *r'* band. Therefore, this star cannot be the source of the eclipses and has a negligible impact on the measurement of the planet radius (a correction of around 0.002%). Hence, our results confirm the non-detection of close-in companions to HD 106315 within 10 arcsec presented by Crossfield et al. (2017), whose observations have a higher sensitivity closer to the target. We also exclude the existence of significant contaminating stars present at larger distances, but inside the K2 aperture. Ignoring the presence of all possible sources inside the photometric aperture can give rise to false positives (Cabrera et al. 2017).

3. Spectral analysis of the host star

In order to perform the spectral analysis of the host star we first co-added all the (Doppler corrected) individual spectra of HD 106315 into a single 1D spectra with IRAF (Image Reduction and Analysis Facility).⁴ We found that the stellar parameters derived with the equivalent width (EW) method (in our case ARES+MOOG, Sousa 2014) were not very reliable due to the fast rotation of the host star. In HD 106315 the fast rotation leads to a significant spectral line broadening that affects our spectral parameter retrieval method. Therefore, we adopted the values reported by Rodriguez et al. (2017) using the stellar

⁴ IRAF is distributed by National Optical Astronomy Observatories, operated by the Association of Universities for Research in Astronomy, Inc., under contract with the National Science Foundation, USA.

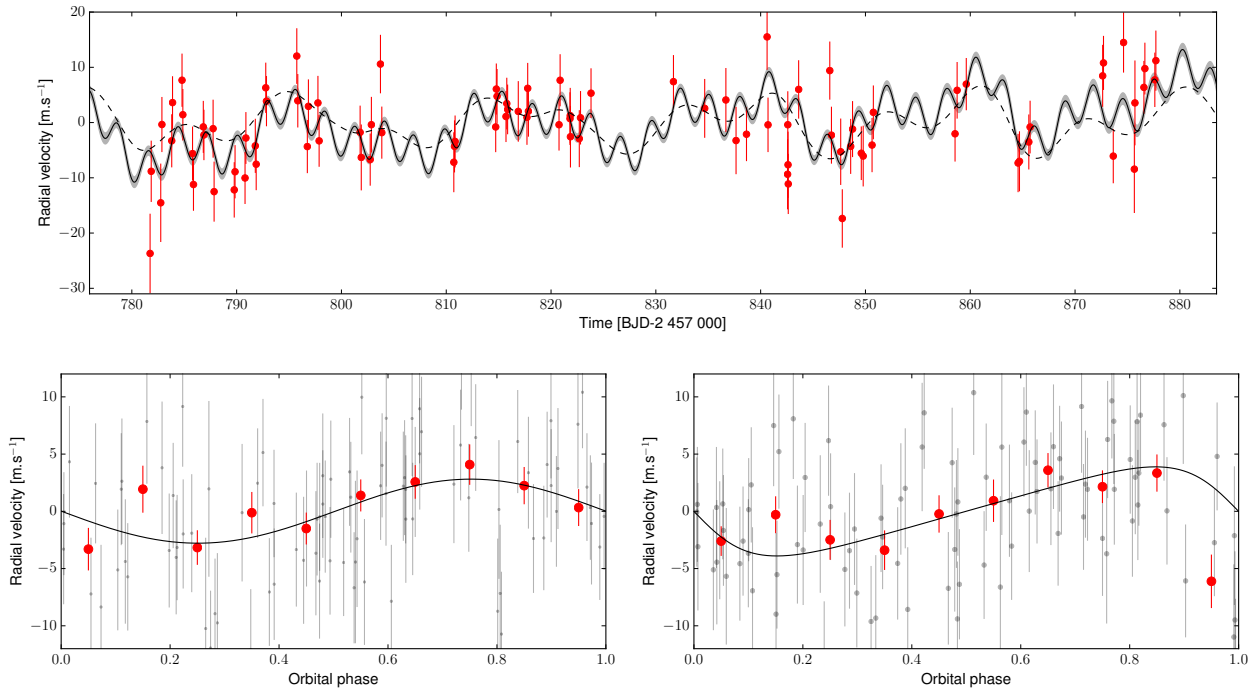


Fig. 4. Top panel: Time series of the radial velocities of HD 106315. Bottom panel: Radial velocities of HD 106315 phase folded on the ephemeris of planet b (left panel) and of planet c (right panel). For the phase folded plots, we show both data binned to 0.05 in phase (in red-dark) and unbinned data (grey). For all the cases, the errors include the estimated jitter added quadratically and we overplotted the best fitted model presented in Table 2, which includes the Gaussian process to model the activity. In the top panel we also show a model without GPs, which includes the two Keplerian orbits (dash-line).

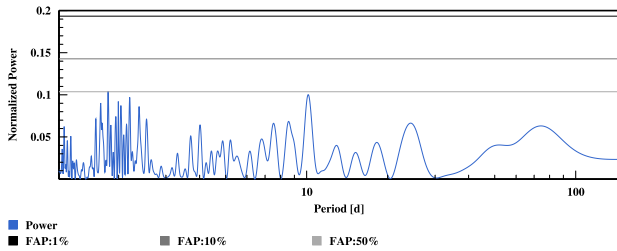


Fig. 5. Periodogram of the residual of the radial velocities of HD 106315 after subtracting the best fit keplerian for planets b and c. The horizontal lines represent the false alarm probability at 0.1%, 1%, 10%, and 50% confidence level.

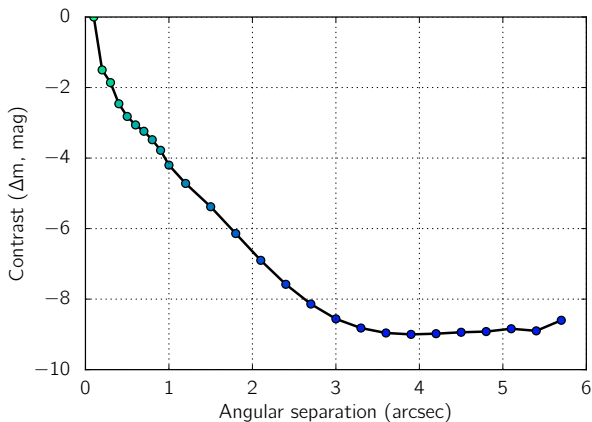


Fig. 6. Contrast curve in the SDSS i-band for the neighbourhood of HD 106315.

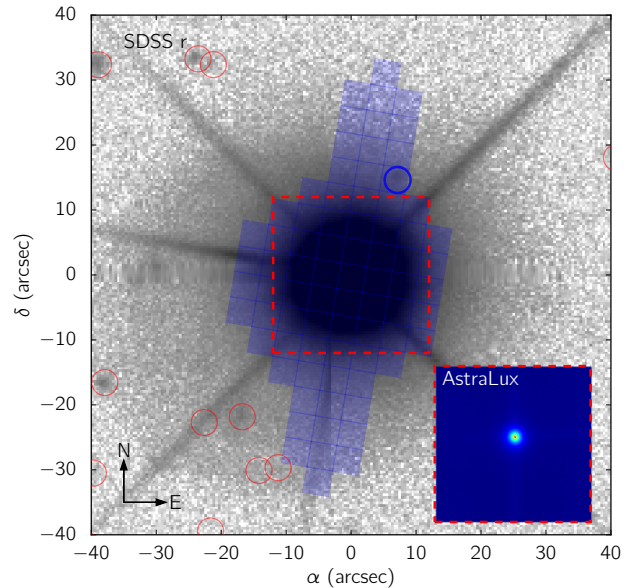


Fig. 7. SDSS r' band image of the field of HD 106315 with an inset showing the high spatial resolution image taken with AstraLux. Only one faint object (marked with a blue circle) is detected inside the K2 aperture (shadowed purple). The object is 11 magnitudes fainter than the main target and hence does not produce significant contamination.

parameter classification tool: $T_{\text{eff}} = 6251 \pm 52$ K, $\log g = 4.1 \pm 0.1$ [cgs] and $[\text{Fe}/\text{H}] = -0.27 \pm 0.08$. These are in close agreement with the Crossfield et al. (2017) parameters. As explained in the data analysis (Section 4), these parameters were used as priors

and fitted together with all the data we have for this system, including the modelling of the spectral energy distribution (SED) of the star and the stellar evolution tracks of Dartmouth (Dotter et al. 2008). From our combined analysis we obtained the final stellar parameters: $T_{\text{eff}} = 6327 \pm 48$ K, $\log g = 4.252 \pm 0.043$ [cgs] and $[\text{Fe}/\text{H}] = -0.311 \pm 0.079$ dex. These parameters are naturally compatible with those adopted from Rodriguez et al. (2017).

These stellar parameters were used to derive the stellar chemical abundances, which for most of the elements were derived under the assumption of local thermodynamic equilibrium (LTE) using the 2014 version of the code MOOG (Snedden 1973) with the *abfind* driver. For the lines affected by hyperfine splitting (HFS), we used the *blends* driver. A grid of Kurucz ATLAS9 atmospheres (Kurucz 1993) was used as input along with the EWs and the atomic parameters, wavelength (λ), excitation energy of the lower energy level (χ), and oscillator strength ($\log gf$) of each line. The EWs of the different species lines were measured automatically with the version 2 of the ARES programme⁵ (Sousa et al. 2007, 2015). However, due to the high rotation of the star, some of the stellar lines were blended. The EWs of these lines were measured manually with the task *splot* in IRAF. Abundances are measured from a few isolated lines and our procedure is valid for these manually checked lines. As mentioned above, in this case the stellar parameter determination is not reliable because it is a global fit. We refer the reader to the works of Adibekyan et al. (2012), Santos et al. (2015), and Delgado Mena et al. (2017) for further details and the complete line list. Li abundances were derived with the spectral synthesis method, also using the code MOOG and ATLAS atmosphere models as done in Delgado Mena et al. (2014). The derived chemical abundances are given in Table 1. We derive a stellar age of 3.4 ± 2.5 Gyr using an empirical relation with $[\text{Y}/\text{Mg}]$ (Tucci Maia et al. 2016), which is in good agreement with the age derived in Section 4 using stellar evolution tracks.

4. Data analysis

We jointly analysed the HARPS radial velocities (RVs), the K2 light curve, the LCO light curve of HD 106315 and its SED as observed by the 2-MASS, Hipparcos, and wide-field infrared survey explorer (WISE) surveys (Munari et al. 2014; Høg et al. 2000; Cutri 2014) using the PASTIS software (Díaz et al. 2014; Santerne et al. 2015). Both planets HD 106315b and HD 106315c are modelled simultaneously. We analyse only sections of the light curve centred at the mid-transit time of both planets and with a length of 2.5 transit durations. The RVs were modelled with Keplerian orbits and the transits were modelled with the JKTEBOP package (Southworth 2008), using an oversampling factor of 30 for K2 to account for the long integration time of the data (Kipping 2010). The SED was modelled using the BT-SETTL library of stellar atmospheres (Allard et al. 2012). This model was coupled with a Markov Chain Monte Carlo (MCMC) method with many different parallel Metropolis-Hastings chains (Díaz et al. 2014) to derive the system parameters and their uncertainties. At each step of the chains, the spectroscopic stellar parameters were converted into physical parameters (stellar mass and stellar radius) using the Dartmouth evolution tracks (Dotter et al. 2008). The coefficients of the quadratic limb-darkening law are also computed at each step of the chains using the stellar parameters and the tables of Claret &

⁵ The ARES code can be downloaded at <http://www.astro.up.pt/~sousasag/ares/>.

Table 1. List of the abundances derived from the HARPS combined spectra of HD 106315.

Element	Abundance dex	Error dex	Number of lines
[Cl/H]	-0.13	0.03	2
[NaI/H]	-0.13	0.04	2
[MgI/H]	-0.26	0.11	2
[AlI/H]	-0.25	0.04	2
[SiI/H]	-0.11	0.04	13
[CaI/H]	-0.11	0.04	9
[ScII/H]	-0.29	0.04	4
[TiI/H]	-0.18	0.08	14
[TiII/H]	-0.23	0.04	5
[VI/H]	-0.27	0.06	5
[CrI/H]	-0.19	0.07	11
[CrII/H]	-0.14	0.04	3
[MnI/H]	-0.19	0.10	4
[CoI/H]	-0.24	0.06	4
[NiI/H]	-0.25	0.07	32
[CuI/H]	-0.40	0.11	4
[ZnI/H]	-0.32	0.1	3
[SrI/H]	-0.19	0.08	1
[YII/H]	-0.13	0.07	4
[ZrII/H]	-0.19	0.05	4
[BaII/H]	-0.08	0.07	3
[CeII/H]	-0.22	0.07	3
[NdII/H]	-0.35	0.11	4
A(Li)*	2.58	0.08 dex	1

$$*A(\text{Li}) = \log[\text{N}(\text{Li})/\text{N}(\text{H})] + 12$$

Bloemen (2011). Our choice of the limb-darkening treatment is motivated by the fact that the low cadence of the K2 data and the precision of the ground-based transit does not allow us to constrain the limb-darkening coefficients. It was shown by Müller et al. (2013) that fixing the limb-darkening coefficients to the theoretical models is adequate in most cases and can be better than fitting them, especially for low-impact parameters. Based on Espinoza & Jordán (2015), we estimated that this procedure could bias the derived planet-to-star radius ratio by less than 1%, which is below our errors. We derive limb-darkening values of $u_1 = 0.3024 \pm 0.0049$ and $u_2 = 0.3057 \pm 0.0018$ for the K2 light curve, and $u_1 = 0.2270 \pm 0.004$, $u_2 = 0.3033 \pm 0.0018$ for the LCO light curve. We included a jitter parameter in the fit for each of the observation sets: K2 light curve, LCO light curve, and HARPS RVs. To model the possible effects of stellar activity in the radial velocity data, we used a Gaussian process (GP) with a quasi periodic kernel (Haywood et al. 2014). In this case the covariance matrix is defined as:

$$K = A^2 \exp \left[-\frac{1}{2} \left(\frac{\Delta t}{\lambda_1} \right)^2 - 2 \left(\frac{\sin \left(\frac{\pi \Delta t}{P_{\text{rot}}} \right)}{\lambda_2} \right)^2 \right] + I \sqrt{\sigma^2 + \sigma_j^2}. \quad (1)$$

The first term is the quasi periodic kernel with the hyperparameters: amplitude (A), rotation period (P_{rot}), and two timescales (λ_1, λ_2). Finally, Δt is a matrix with elements $\Delta t_{ij} = t_i - t_j$. The second term is the identity matrix multiplied by usual data uncertainties σ plus a jitter term to account for uncorrelated noise σ_j .

The priors for all the fitted parameters used in the model are given in Table .2 in the Appendix. For the stellar distance we used a normal distribution prior centred on the *Gaia* parallax

(Gaia Collaboration et al. 2016b,a). As mentioned in the previous section, for the effective temperature, the surface gravity, and metallicity we used normal priors centred on the values reported by Rodriguez et al. (2017). We also used normal priors for the orbital ephemeris centred on the values found by the detection pipeline and assuming a width of 0.08 d and 0.1 d for the period and transit epoch, respectively. For the orbital eccentricity, we chose a β distribution as prior (Kipping 2013) and for the planet's inclination we used a Sine distribution as prior (between 70° and 90°). For the remaining parameters we used uninformative priors.

For the first exploration of the parameter space, we ran the MCMC with 20 chains of 3×10^5 iterations each, with starting points randomly drawn from the joint prior. We used a Kolmogorov-Smirnov test to reject non-converging chains (Díaz et al. 2014). In order to better explore the region of the parameter space close to the solution and derive accurate uncertainties, we ran a second MCMC with chains starting at the best solution found from the combination of the chains that converged. For this second MCMC, we ran 20 chains of 3×10^5 iterations. The burn-in phase was removed before merging the converged chains to obtain the system parameters.

5. Results

The parameters derived by our model are given in Table 2. All the uncertainties provided in the table are statistical and they do not include unknown errors in the models. We reiterate that the stellar parameters presented in the table are derived from the combined analysis of the data and not from the spectral analysis.

We derive the radius for both planets, $r_b = 2.44 \pm 0.17 R_\oplus$ and $r_c = 4.35 \pm 0.23 R_\oplus$, which are in agreement with previously derived radii though closer to the values of Rodriguez et al. (2017) due to the scaling with the radius of the star. Since we used as priors the stellar parameters derived by Rodriguez et al. (2017) and a similar data analysis method, their stellar radius is very close to our derived value while the value of Crossfield et al. (2017) is slightly smaller. Due to our high precision RVs, we were also able to derive precisely the mass of both planets: $m_b = 12.6 \pm 3.2 M_\oplus$ and $m_c = 15.2 \pm 3.7 M_\oplus$. Therefore, the inner planet is much denser ($4.7 \pm 1.7 \text{ g cm}^{-3}$) than the outer planet ($1.01 \pm 0.29 \text{ g cm}^{-3}$). The ground-based transit obtained by LCO allows us to update the ephemeris of HD 106315c, decreasing the uncertainty in the period by one order of magnitude. We find $P = 21.05704 \pm 4.6 \times 10^{-4}$ days and $T_0 = 2457569.0173 \pm 1.4 \times 10^{-3}$ days, which will help with future follow-up observations. We also find no significant transit timing variations.

The derived GP period is 2.825 ± 0.012 . This value is close to the half of the rotation period of the star derived from $v \sin i$ assuming $i = 90$. We find a similar periodicity in the FWHM indicating that this period is due to activity. However, the double of the period is not significant in the data. If this signal is due to activity, either the radial velocities show half the period of rotation of the star or the star has an inclination relative to the planetary orbit of ~ 30 degrees. Alternatively, the variability-induced signal found in the RVs could be due to stellar super granulation, although the timescale of super granulation for this stellar type is expected to be lower.

To test the robustness of our results we redid all the analysis using the stellar parameters from Crossfield et al. (2017). We found that all the derived values are within 1σ of our final values, which are based on stellar parameters from Rodriguez et al. (2017). We tested the existence of a linear, quadratic, and

cubic drift. Using the Bayesian information criterium, we conclude that none of these drifts are significantly supported by the current data ($\Delta BIC < 5$ comparing with no drift). To further test the presence of this drift, we obtained an extra two HARPS radial velocities in early July 2017 (two months after the end of our intensive campaign) and still found no significant drift. These two points were ignored in our final analysis as they are completely uncorrelated with the intensive campaign. Crossfield et al. (2017) previously reported a hint of a drift of $0.3 \pm 0.1 \text{ m s}^{-1} \text{ day}^{-1}$; this translates into 47 m s^{-1} over the 157 days of the total duration of our observations. Hence, the existence of this previously reported drift is also ruled out by our observations.

6. Discussion and conclusions

To probe the composition of the two transiting planets orbiting HD 106315, we acquired high precision radial velocity observations with the HARPS spectrograph. These observations allow us to derive a mass for both known planets orbiting HD 106315. We find that HD 106315b has a mass of $12.6 \pm 3.2 M_\oplus$ and a density of $4.7 \pm 1.7 \text{ g cm}^{-3}$, while HD 106315c has a mass of $15.2 \pm 3.7 M_\oplus$ and a density of $1.01 \pm 0.29 \text{ g cm}^{-3}$. This system embodies the diversity of planetary composition given that planet c is almost double the size of planet b although they have almost the same mass. Therefore, we expect they will have different compositions.

In Figure 8, we show the positions of HD 106315b and HD 106315c on the mass-radius diagram compared with known planets within the same mass and size range ($M < 20 M_\oplus$ and $R < 5 R_\oplus$). To probe the planets' composition, we plot in the same figure the theoretical models for solid planets with assumed compositions of pure iron, pure silicate, and pure water, as well as Earth-like and Mercury-like compositions (Brugger et al. submitted). We also plot the model of Baraffe et al. (2008), which applies to planets with gaseous envelopes with a heavy material enrichment of 0.9 and an age of 5 Gyr, which appears to be a good match for HD 106315c. HD 106315b appears to be composed of a large fraction of silicate rocks and water.

A detailed investigation of HD 106315b's composition using the planetary interior model by Brugger (et al. submitted) allows us to constrain the core mass and potential water content of this planet. This model includes only refractory elements, and hence it does not consider the possibility of a rocky core with a thick H-He envelope. Therefore, we cannot apply this model to planet c because, as discussed above, planet c must have an envelope of H-He. The model assumes that the planet is fully differentiated into three main layers: a metallic core, a silicate mantle, and a water envelope. The size, and thus mass, of these layers fix a planet's internal structure, that is, its composition. In this model, the surface conditions of HD 106315b are assumed to be close to those of the Earth (288 K temperature and 1 bar pressure) to allow the simulation of liquid water. Considering the equilibrium temperature inferred for HD 106315b ($1153 \pm 25 \text{ K}$), water on the surface of this planet would be in the supercritical phase. We explore all possible compositions for HD 106315b, with a parameter space that is represented by ternary diagrams for the core, mantle, and water mass fractions (Figure 9). Our simulations show that the mass and radius measured for HD 106315b are incompatible with a fully rocky composition, as the water mass fraction of this planet has a lower limit of 5%. This fraction may theoretically go up to 100% but we can place an upper limit of 50%, which is the maximum value found in large differentiated bodies of the solar system. The core mass fraction

Table 2. Physical parameters of the HD 106315 system.

Parameter	Value and uncertainty	
	HD 106315b	HD 106315c
<i>Orbital parameters</i>		
Orbital period P [d]	$9.55237 \pm 8.9 \times 10^{-4}$	$21.05704 \pm 4.6 \times 10^{-4}$
Epoch of first transit T_0 [BJD _{TDB} - 2.4×10^6]	$57586.5487 \pm 2.9 \times 10^{-3}$	$57569.0173 \pm 1.4 \times 10^{-3}$
Orbital eccentricity e	$0.093^{+0.110}_{-0.068}$	0.22 ± 0.15
Argument of periastron ω [°]	239^{+74}_{-200}	96^{+88}_{-35}
Semi-major axis a [AU]	$0.0907 \pm 1.0 \times 10^{-3}$	$0.1536 \pm 1.7 \times 10^{-3}$
Inclination i [°]	87.54 ± 0.32	$88.61^{+0.70}_{-0.25}$
<i>Transit & radial velocity parameters</i>		
System scale a/R_\star	15.07 ± 0.70	25.5 ± 1.2
Impact parameter b	0.67 ± 0.1	$0.52^{+0.17}_{-0.31}$
Transit duration T_{14} [h]	3.775 ± 0.081	4.638 ± 0.072
Planet-to-star radius ratio k_r	$0.01728 \pm 6.0 \times 10^{-4}$	0.03086 ± 0.0010
Radial velocity amplitude K [m s ⁻¹]	3.63 ± 0.92	3.43 ± 0.83
<i>Planet parameters</i>		
Planet mass M_p [M_\oplus]	12.6 ± 3.2	15.2 ± 3.7
Planet radius R_p [R_\oplus]	2.44 ± 0.17	4.35 ± 0.23
Planet density ρ_p [g cm ⁻³]	4.7 ± 1.7	1.01 ± 0.29
Equilibrium temperature T_{eq} [K]	1153 ± 25	886 ± 20
<i>Stellar parameters</i>		
Stellar mass M_\star [M_\odot]	1.091 ± 0.036	
Stellar radius R_\star [R_\odot]	1.296 ± 0.058	
Stellar age τ [Gyr]	4.48 ± 0.96	
Effective temperature T_{eff} [K]	6327 ± 48	
Surface gravity $\log g$ [g cm ⁻²]	4.252 ± 0.043	
Iron abundance [Fe/H] [dex]	-0.311 ± 0.079	
Reddening E(B-V) [mag]	$0.0050^{+0.0085}_{-0.0038}$	
Systemic radial velocity v_0 [km s ⁻¹]	$-3.34^{+0.56}_{-0.38}$	
Distance to Earth d [pc]	109 ± 5	
Spectral type	F5V	
<i>Instrumental parameters</i>		
HARPS radial velocity jitter [m s ⁻¹]	3.05 ± 0.78	
SED jitter [mag]	0.079 ± 0.020	
K2 jitter [ppm]	44 ± 2	
K2 contamination [ppt]	$3.3^{+3.8}_{-2.3}$	
K2 flux normalisation	$1.000001 \pm 3.1 \times 10^{-6}$	
LCO jitter [ppt]	1.424 ± 0.065	
LCO contamination	$0.1^{+0.12}_{-0.07}$	
LCO flux normalisation	0.99994 ± 0.00011	
GP period [d]	2.825 ± 0.012	
GP amplitude [m s ⁻¹]	0.57 ± 0.35	
GP λ_1 [d]	652.5 ± 340	
GP λ_2	299.0 ± 260	

We assumed $R_\odot=695\,508\text{km}$, $M_\odot=1.98842 \times 10^{30}\text{kg}$, $R_\oplus=6\,378\,137\text{m}$, $M_\oplus=5.9736 \times 10^{24}\text{kg}$, and $1\text{AU}=149\,597\,870.7\text{km}$.

of HD 106315b is found to be in the range 0–52%. Given the uncertainties on the fundamental parameters of this planet, its core mass and water fraction cannot be better constrained. How-

ever, the incorporation of the planet’s bulk Fe/Si ratio helps to reduce the computed ranges under the assumption that this ratio reflects that of the host star (Thiabaud et al. 2015). Using

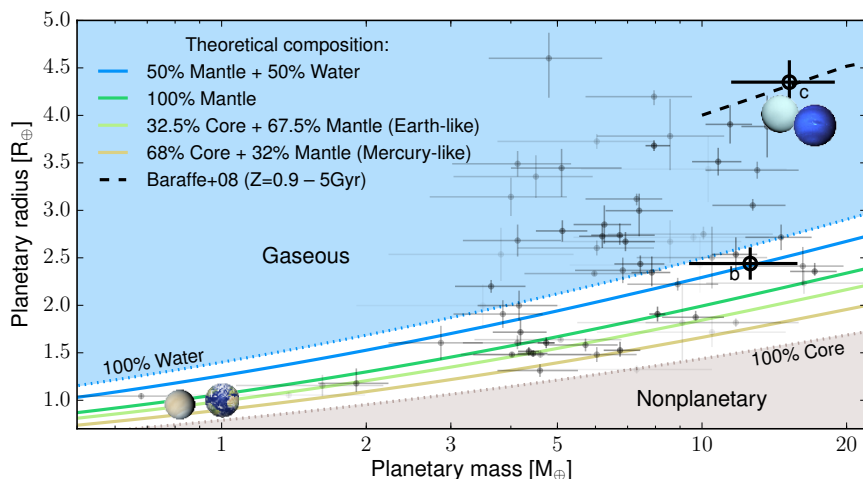


Fig. 8. Mass-radius relationship for different bulk compositions of small planets. We overplot different compositions for solid planets in between pure iron and pure water. The black dashed line corresponds to the models of Baraffe et al. (2008) for gaseous planets with heavy material enrichments of 0.9 and an age of 5 Gyr. We superimposed the known planets in this mass-radius range where the greyscale depends on the precision of the mass and radius. We mark the position of the planets HD 106315b and HD 106315c, as derived by us.

the stellar abundances from Section 3, we compute that $\text{Fe}/\text{Si} = 0.532 \pm 0.316$. Here, incorporating this parameter in the interior model gives a 9-50% range for the water mass fraction and 5-29% for the core mass fraction. It appears that HD 106315b cannot be fully rocky and must harbour a significant water envelope. Both the water mass fraction and the core mass fraction of this planet can be significantly constrained via the use of the stellar Fe/Si ratio and the limitations from solar system formation conditions, respectively.

The other possibility is that HD 106315b is composed of a rocky core with a thick H-He envelope. This could be expected since HD 106315b is close to the transition between rocky and gaseous planets. HD 106315b and c have the potential to bring light to this transition, given their close masses but different radii.

To probe the evolution of this interesting multi-planetary system, we compared our derived systems parameters with the results of synthetic planetary populations and evolutionary tracks calculated with the Bern model of planet formation and evolution (Alibert et al. 2005; Mordasini et al. 2012; Benz et al. 2014) available through DACE⁶ (Data and Analysis Center for Exoplanets). The simulations assume a stellar mass of $1 M_{\odot}$, a stellar age of 4 Gyr, and cold gas accretion. The long-term evolution neglects envelope evaporation. We compared simulations with similar semi-major axis and mass to the values we derived for both the planets. All simulations have a semi-major axis higher than 0.101 AU. Therefore they cannot reproduce planet b. However, using the simulation with semi-major axis ~ 0.101 AU as proxy for planet b, we find that this planet could have been formed in between 0.11 and 2.5 AU and probably has a core mass just slightly lower ($\sim 12 M_{\oplus}$) than the total planetary mass. We found a close proxy for planet c, which suggests that it could have been formed between 1.0 and 3.0 AU. Hence, in general planet c formed further away from the host star than planet b and is expected to have similar core mass ($\sim 12 M_{\oplus}$). Another interesting fact is that the predicted radius for both planets is almost the same and in agreement with the value we measured for planet c. However, the radii of the simulated planets are always higher than the radius of planet b. This could be explained if planet b, as it lies closer to the host star, has suffered envelope evaporation, which is not taken into account in the simulation. Therefore, the difference in the density between both planets can be explained by the different formation region in the proto-planetary disc as well as a possible envelope evaporation.

⁶ <https://dace.unige.ch>.

With Equation 15 of Lecavelier Des Etangs (2007), we estimate the escape rate of the atmosphere using two different values for the F_{EUV} (1 AU): $14.7 \text{ erg cm}^{-2}\text{s}^{-1}$ from Lecavelier Des Etangs (2007) and $82.76 \text{ erg cm}^{-2}\text{s}^{-1}$ calculated using Equation 3 of Ehrenreich & Désert (2011). Assuming that the F_{EUV} (1 AU) is constant, we calculate an atmosphere loss of $\sim [0.018, 0.10]$ earth masses for planet b and $\sim [0.033, 0.19]$ for planet c during their lifetime of 4 Gyr. Therefore, it appears that the mass loss is not important for these two planets. However, our first approximation of the mass loss rates should be confirmed with more detailed models of evaporating atmospheres, which are out of the scope of this paper.

Gaining insight into the composition of the atmosphere of these planets would allow us to better constrain their interior composition and their formation history. We estimate the scale height of the atmosphere of HD 106315b and HD 106315c to be $\sim 196.72 \text{ Km}$ and $\sim 464.53 \text{ Km}$, respectively. Therefore, given the brightness of the host star, both planets are also golden targets for transmission spectroscopy with JWST. This would be particularly interesting for HD 106315b since this planet lies in the transition between rocky and gaseous planet composition. Probing its atmosphere with upcoming new facilities like JWST and the extremely large telescopes (ELTs) will help to better understand the composition of this planet.

Acknowledgements. We are grateful to the pool of HARPS observers who conducted part of the visitor-mode observations at La Silla Observatory: Romina Ibanez Bustos, Nicola Astudillo, Aurélien Wytenbach, Esther Linder, Xavier Bonfils, Elodie Hébrard, and Alejandro Suarez. This work makes use of observations from the LCO network. This publication makes use of the Data & Analysis Center for Exoplanets (DACE), which is a facility based at the University of Geneva (CH) dedicated to extrasolar planets' data visualisation, exchange, and analysis. DACE is a platform of the Swiss National Centre of Competence in Research (NCCR) PlanetS, federating the Swiss expertise in Exoplanet research. The DACE platform is available at <https://dace.unige.ch>. This research has made use of the NASA Exoplanet Archive, which is operated by the California Institute of Technology, under contract with the National Aeronautics and Space Administration under the Exoplanet Exploration Program. This research has made use of the VizieR catalogue access tool, CDS, Strasbourg, France. The original description of the VizieR service was published in A&AS 143, 23. This publication makes use of data products from the Two Micron All Sky Survey, which is a joint project of the University of Massachusetts and the Infrared Processing and Analysis Center/California Institute of Technology, funded by the National Aeronautics and Space Administration and the National Science Foundation. This publication makes use of data products from the Wide-field Infrared Survey Explorer, which is a joint project of the University of California, Los Angeles, and the Jet Propulsion Laboratory/California Institute of Technology, funded by the National Aeronautics and Space Administration. The IA/Porto team acknowledges support from Fundação para a Ciência e a Tecnologia (FCT) through national funds and by FEDER through COMPETE2020

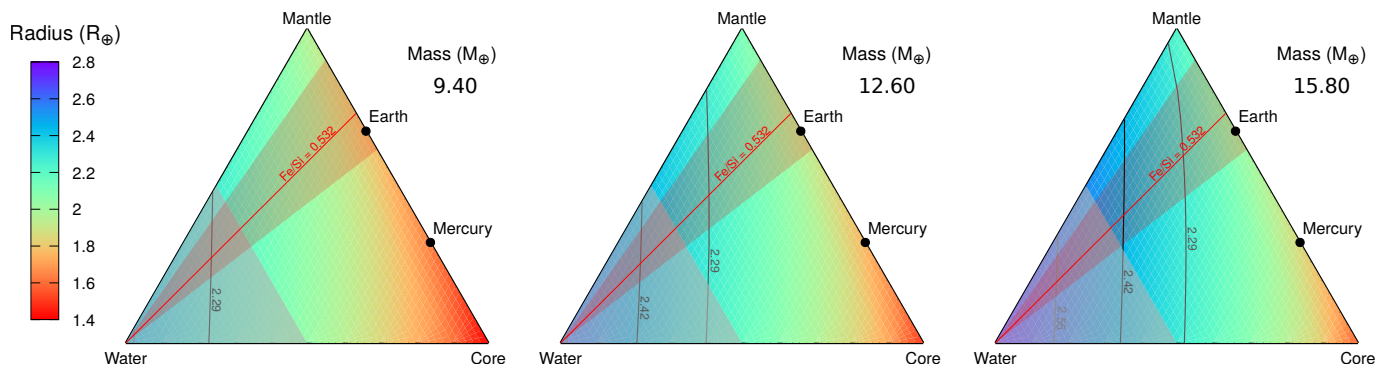


Fig. 9. Ternary diagrams displaying the investigated compositional parameter space of HD 106315b for the minimum, central, and maximum masses, using 1σ uncertainties. Also shown are the isoradius curves denoting the planet radius with the 1σ extreme values. The planetary Fe/Si ratio assumed for HD 106315b, with its associated 1σ uncertainties, delimits an area represented as a red triangle. Planetary compositions with a water mass fraction higher than 50% are excluded, based on assumptions on the solar system's present properties (grey zone).

by these grants UID/FIS/04434/2013 & POCI-01-0145-FEDER-007672 , PTDC/FIS-AST/1526/2014 & POCI-01-0145-FEDER-016886 and PTDC/FIS-AST/7073/2014 & POCI-01-0145-FEDER-016880. SCCB, E.D.M. V.Zh.A., N.C.S., PF, and S.G.S. also acknowledge support from FCT through Investigador FCT contracts IF/01312/2014/CP1215/CT000, IF/00849/2015, IF/00650/2015/CP1273/CT0001, IF/00169/2012/CP0150/CT0002, IF/01037/2013/CP1191/CT0001 and IF/00028/2014/CP1215/CT0002 funded by FCT (Portugal) and POPH/FSE (EC). V.Zh.A. and J.P.F. also acknowledge support from the FCT in the form of the grants SFRH/BPD/70574/2010 and SFRH/BD/93848/2013, respectively. PF further acknowledges support from Fundação para a Ciência e a Tecnologia (FCT) through POPH/FSE (EC) by FEDER funding through the programme "Programa Operacional de Factores de Competitividade - COMPETE" and exploratory project of reference IF/01037/2013/CP1191/CT0001. J.P.F., S.H., and J.J.N. acknowledge support by the fellowships SFRH/BD/93848/2013, PD/BD/128119/2016, and PD/BD/52700/2014, funded by FCT (Portugal) and POPH/FSE (EC). The French group acknowledges financial support from the French Programme National de Planétologie (PNP, INSU). The Swiss group acknowledges financial support the National Centre for Competence in Research "Planets" supported by the Swiss National Science Foundation (SNSF). DJA is funded under STFC consolidated grant reference ST/P000495/1. This work has been partly carried out thanks to support funding from Excellence Initiative of Aix-Marseille University A*MIDEX, a French "Investissements d'Avenir" programme. ACC acknowledges support from STFC consolidated grant number ST/M001296/1. XD is grateful to the Society in Science? The Branco Weiss Fellowship for its financial support. Part of this research has been funded by the Spanish grant ESP2015-65712-C5-1-R. We thank the anonymous referee for the careful review of this manuscript that improved its quality.

References

- Adibekyan, V. Z., Sousa, S. G., Santos, N. C., et al. 2012, *A&A*, 545, A32
 Albrecht, S., Winn, J. N., Johnson, J. A., et al. 2012, *ApJ*, 757, 18
 Alibert, Y. 2014, *A&A*, 561, A41
 Alibert, Y., Mordasini, C., Benz, W., & Winisdoerffer, C. 2005, *A&A*, 434, 343
 Allard, F., Homeier, D., & Freytag, B. 2012, *Royal Society of London Philosophical Transactions Series A*, 370, 2765
 Baraffe, I., Chabrier, G., & Barman, T. 2008, *A&A*, 482, 315
 Baranne, A., Queloz, D., Mayor, M., et al. 1996, *A&AS*, 119, 373
 Barclay, T., Rowe, J. F., Lissauer, J. J., et al. 2013, *Nature*, 494, 452
 Barros, S. C. C., Almenara, J. M., Deleuil, M., et al. 2014, *A&A*, 569, A74
 Barros, S. C. C., Demangeon, O., & Deleuil, M. 2016, *A&A*, 594, A100
 Batalha, N. E., Kempton, E. M.-R., & Mbarek, R. 2017, *ApJ*, 836, L5
 Benz, W., Ida, S., Alibert, Y., Lin, D., & Mordasini, C. 2014, *Protostars and Planets VI*, 691
 Bonomo, A. S., Santerne, A., Alonso, R., et al. 2010, *A&A*, 520, A65
 Borucki, W. J., Koch, D., Basri, G., et al. 2010, *Science*, 327, 977
 Bouchy, F., Maeder, A., Mayor, M., et al. 2004, *Nature*, 432, 2
 Bouchy, F., Pepe, F., & Queloz, D. 2001, *A&A*, 374, 733
 Brown, T. M., Baliber, N., Bianco, F. B., et al. 2013, *PASP*, 125, 1031
 Cabrera, J., Barros, S. C. C., Armstrong, D., et al. 2017, *ArXiv e-prints* [arXiv:1707.08007]
 Carter, J. A., Agol, E., Chaplin, W. J., et al. 2012, *Science*, 337, 556
 Claret, A. & Bloemen, S. 2011, *A&A*, 529, A75+
 Crossfield, I. J. M., Ciardi, D. R., Isaacson, H., et al. 2017, *AJ*, 153, 255
 Cutri, R. M. 2014, *VizieR Online Data Catalog*, 2328
 Delgado Mena, E., Israelian, G., González Hernández, J. I., et al. 2014, *A&A*, 562, A92
 Delgado Mena, E., Tsantaki, M., Adibekyan, V. Z., et al. 2017, *ArXiv e-prints* [arXiv:1705.04349]
 Díaz, R. F., Almenara, J. M., Santerne, A., et al. 2014, *MNRAS*, 441, 983
 Dotter, A., Chaboyer, B., Jevremović, D., et al. 2008, *ApJS*, 178, 89
 Dressing, C. D., Charbonneau, D., Dumusque, X., et al. 2015, *ApJ*, 800, 135
 Dumusque, X., Bonomo, A. S., Haywood, R. D., et al. 2014, *ApJ*, 789, 154
 Dumusque, X., Udry, S., Lovis, C., Santos, N. C., & Monteiro, M. J. P. F. G. 2011, *A&A*, 525, A140
 Ehrenreich, D. & Désert, J.-M. 2011, *A&A*, 529, A136
 Espinoza, N. & Jordán, A. 2015, *MNRAS*, 450, 1879
 Ford, E. B. & Rasio, F. A. 2008, *ApJ*, 686, 621
 Fressin, F., Torres, G., Charbonneau, D., et al. 2013, *ApJ*, 766, 81
 Fried, D. L. 1978, *Journal of the Optical Society of America (1917-1983)*, 68, 1651
 Fulton, B. J., Petigura, E. A., Howard, A. W., et al. 2017, *ArXiv e-prints* [arXiv:1703.10375]
 Gaia Collaboration, Brown, A. G. A., Vallenari, A., et al. 2016a, *A&A*, 595, A2
 Gaia Collaboration, Prusti, T., de Bruijne, J. H. J., et al. 2016b, *A&A*, 595, A1
 Green, G. M., Schlafly, E. F., Finkbeiner, D. P., et al. 2015, *ApJ*, 810, 25
 Haywood, R. D., Collier Cameron, A., Queloz, D., et al. 2014, *MNRAS*, 443, 2517
 Høg, E., Fabricius, C., Makarov, V. V., et al. 2000, *A&A*, 355, L27
 Hormuth, F., Brandner, W., Hippler, S., & Henning, T. 2008, *Journal of Physics Conference Series*, 131, 012051
 Howell, S. B., Sobeck, C., Haas, M., et al. 2014, *PASP*, 126, 398
 Jontof-Hutter, D., Rowe, J. F., Lissauer, J. J., Fabrycky, D. C., & Ford, E. B. 2015, *Nature*, 522, 321
 Kipping, D. M. 2010, *MNRAS*, 408, 1758
 Kipping, D. M. 2013, *MNRAS*, 434, L51
 Kurucz, R. 1993, *ATLAS9 Stellar Atmosphere Programs and 2 km/s grid*. Kurucz CD-ROM No. 13. Cambridge, Mass.: Smithsonian Astrophysical Observatory, 1993., 13
 Lecavelier Des Etangs, A. 2007, *A&A*, 461, 1185
 Léger, A., Selsis, F., Sotin, C., et al. 2004, *Icarus*, 169, 499
 Lillo-Box, J., Barrado, D., & Bouy, H. 2014, *A&A*, 566, A103
 Lissauer, J. J. 1993, *ARA&A*, 31, 129
 Lissauer, J. J., Fabrycky, D. C., Ford, E. B., et al. 2011, *Nature*, 470, 53
 Lovis, C., Dumusque, X., Santos, N. C., et al. 2011, *ArXiv e-prints* [arXiv:1107.5325]
 Malavolta, L., Borsato, L., Granata, V., et al. 2017, *AJ*, 153, 224
 Marcy, G. W., Isaacson, H., Howard, A. W., et al. 2014, *ApJS*, 210, 20
 Mayor, M., Marmier, M., Lovis, C., et al. 2011, *ArXiv e-prints* [arXiv:1109.2497]
 Mayor, M., Pepe, F., Queloz, D., et al. 2003, *The Messenger*, 114, 20
 McLaughlin, D. B. 1924, *ApJ*, 60, 22
 Mordasini, C., Alibert, Y., Klahr, H., & Henning, T. 2012, *A&A*, 547, A111
 Müller, H. M., Huber, K. F., Czesla, S., Wolter, U., & Schmitt, J. H. M. M. 2013, *A&A*, 560, A112
 Munari, U., Henden, A., Frigo, A., et al. 2014, *AJ*, 148, 81
 Nayakshin, S. 2017, *PASA*, 34, e002
 Noyes, R. W., Weiss, N. O., & Vaughan, A. H. 1984, *ApJ*, 287, 769

- Penev, K., Bakos, G. Á., Bayliss, D., et al. 2013, *AJ*, 145, 5
- Pepe, F., Mayor, M., Galland, F., et al. 2002, *A&A*, 388, 632
- Rasio, F. A. & Ford, E. B. 1996, *Science*, 274, 954
- Rodríguez, J. E., Zhou, G., Vanderburg, A., et al. 2017, *ArXiv e-prints* [arXiv:1701.03807]
- Rogers, L. A. 2015, *ApJ*, 801, 41
- Rogers, L. A., Bodenheimer, P., Lissauer, J. J., & Seager, S. 2011, *ApJ*, 738, 59
- Rossiter, R. A. 1924, *ApJ*, 60, 15
- Santerne, A., Díaz, R. F., Almenara, J.-M., et al. 2015, *MNRAS*, 451, 2337
- Santerne, A., Moutou, C., Barros, S. C. C., et al. 2012, *A&A*, 544, L12
- Santos, N. C., Adibekyan, V., Mordasini, C., et al. 2015, *A&A*, 580, L13
- Seager, S., Kuchner, M., Hier-Majumder, C. A., & Militzer, B. 2007, *ApJ*, 669, 1279
- Snedden, C. A. 1973, PhD thesis, The University of Texas at Austin.
- Sousa, S. G. 2014, *ARES + MOOG: A Practical Overview of an Equivalent Width (EW) Method to Derive Stellar Parameters*, ed. E. Niemczura, B. Smalley, & W. Pych, 297–310
- Sousa, S. G., Santos, N. C., Adibekyan, V., Delgado-Mena, E., & Israelian, G. 2015, *A&A*, 577, A67
- Sousa, S. G., Santos, N. C., Israelian, G., Mayor, M., & Monteiro, M. J. P. F. G. 2007, *A&A*, 469, 783
- Southworth, J. 2008, *MNRAS*, 386, 1644
- Strehl, K. 1902, *Astronomische Nachrichten*, 158, 89
- Thiabaud, A., Marboeuf, U., Alibert, Y., Laya, I., & Mezger, K. 2015, *A&A*, 580, A30
- Tucci Maia, M., Ramírez, I., Meléndez, J., et al. 2016, *A&A*, 590, A32
- Valencia, D., O’Connell, R. J., & Sasselov, D. 2006, *Icarus*, 181, 545
- Weidenschilling, S. J. & Marzari, F. 1996, *Nature*, 384, 619
- Weiss, L. M. & Marcy, G. W. 2014, *ApJ*, 783, L6
- Winn, J. N., Fabrycky, D., Albrecht, S., & Johnson, J. A. 2010, *ApJ*, 718, L145
- Wytttenbach, A., Lovis, C., Ehrenreich, D., et al. 2017, *ArXiv e-prints* [arXiv:1702.00448]

Table 2. List of free parameters used in the PASTIS analysis of the light curves, radial velocities, and SED with their associated prior and posterior distribution.

Parameter	Prior	Posterior
<i>Orbital parameters</i>		
HD 106315b		
Orbital period P [d]	$\mathcal{N}(9.552; 0.081)$	$9.55236 \pm 8.8 \times 10^{-4}$
Epoch of first transit T_0 [BJD _{TDB} - 2.4×10^6]	$\mathcal{N}(57586.5; 0.1)$	$57586.5486 \pm 2.9 \times 10^{-3}$
Orbital eccentricity e	$\beta(0.867; 3.030)$	$0.078^{+0.110}_{-0.059}$
Argument of periastron ω [°]	$\mathcal{U}(0; 360)$	245^{+69}_{-190}
Inclination i [°]	$\mathcal{S}(70; 90)$	87.57 ± 0.28
HD 106315c		
Orbital period P [d]	$\mathcal{N}(21.05; 0.20)$	$21.05704 \pm 4.3 \times 10^{-4}$
Epoch of first transit T_0 [BJD _{TDB} - 2.4×10^6]	$\mathcal{N}(57569.0; 0.15)$	$57569.0173 \pm 1.4 \times 10^{-3}$
Orbital eccentricity e	$\beta(0.867; 3.030)$	0.22 ± 0.16
Argument of periastron ω [°]	$\mathcal{U}(0; 360)$	81^{+47}_{-32}
Inclination i [°]	$\mathcal{S}(70; 90)$	$88.66^{+0.84}_{-0.26}$
<i>Planetary parameters</i>		
HD 106315b		
Radial velocity amplitude K [m s ⁻¹]	$\mathcal{U}(0; 1000)$	3.79 ± 0.92
Planet-to-star radius ratio k_r	$\mathcal{U}(0; 1)$	$0.01725 \pm 5.1 \times 10^{-4}$
HD 106315c		
Radial velocity amplitude K [m s ⁻¹]	$\mathcal{U}(0; 1000)$	3.11 ± 0.80
Planet-to-star radius ratio k_r	$\mathcal{U}(0; 1)$	$0.03073^{+0.00100}_{-0.00069}$
<i>Stellar parameters</i>		
Effective temperature T_{eff} [K]	$\mathcal{N}(6251; 52)$	6332 ± 51
Surface gravity $\log g$ [g cm ⁻²]	$\mathcal{N}(4.1; 0.1)$	4.258 ± 0.036
Iron abundance [Fe/H] [dex]	$\mathcal{N}(-0.27; 0.08)$	-0.314 ± 0.078
Reddening E(B-V) [mag]	$\mathcal{U}(0; 0.1)$	$0.0049^{+0.0080}_{-0.0035}$
Systemic radial velocity v_0 [km s ⁻¹]	$\mathcal{U}(-10; 5)$	$-3.4648 \pm 6.9 \times 10^{-4}$
Distance to Earth d [pc]	$\mathcal{N}(107.3; 3.9)$	108 ± 4
<i>Instrumental parameters</i>		
HARPS radial velocity jitter [m s ⁻¹]	$\mathcal{U}(0; 1000)$	2.89 ± 0.72
SED jitter [mag]	$\mathcal{U}(0; 1)$	0.078 ± 0.021
K2 jitter [ppm]	$\mathcal{U}(0; 10000)$	44 ± 2
K2 contamination [ppt]	$\mathcal{N}_{\mathcal{U}}(0; 5; 0; 1000)$	$3.3^{+3.8}_{-2.3}$
K2 flux normalisation	$\mathcal{U}(0.999; 1.001)$	$1.000001 \pm 3.1 \times 10^{-6}$
LCO jitter [ppt]	$\mathcal{U}(0; 100)$	1.422 ± 0.065
LCO contamination	$\mathcal{U}(0; 1)$	$0.10^{+0.12}_{-0.07}$
LCO flux normalisation	$\mathcal{U}(0.99; 1.01)$	0.99994 ± 0.00011
GP period [d]	$\mathcal{U}(0; 8)$	2.825 ± 0.012
GP amplitude [m s ⁻¹]	$\mathcal{U}(0; 1)$	0.57 ± 0.35
GP λ_1 [d]	$\mathcal{U}(0; 1000)$	652.5 ± 340
GP λ_2	$\mathcal{U}(0; 1000)$	299.0 ± 260

$\mathcal{N}(\mu; \sigma^2)$ is a normal distribution with mean μ and width σ^2 , $\mathcal{U}(a; b)$ is a uniform distribution between a and b , $\mathcal{N}_{\mathcal{U}}(\mu; \sigma^2, a, b)$ is a normal distribution with mean μ and width σ^2 multiplied with a uniform distribution between a and b , $\mathcal{S}(a, b)$ is a sine distribution between a and b , $\beta(a; b)$ is a Beta distribution with parameters a and b .

Table .1. List of the HARPS radial velocity observations of HD 106315 as well as the activity indicators.

BJD - 2457000 days	RV Km ⁻¹	σ RV Km ⁻¹	FWHM Km ⁻¹	σ FWHM Km ⁻¹	BIS Km ⁻¹	σ BIS Km ⁻¹	S index	σ S index	SN50
781.85390953	-3.4735	0.0046	20.5547	0.0093	-0.0044	0.0093	0.1614	0.0008	126.4
782.87436772	-3.4633	0.0040	20.5316	0.0079	0.0075	0.0079	0.1600	0.0007	90.4
783.81136007	-3.4673	0.0037	20.5878	0.0075	-0.0375	0.0075	0.1615	0.0006	158.7
783.88784226	-3.4603	0.0037	20.5069	0.0073	-0.0153	0.0073	0.1604	0.0006	164.4
784.79328906	-3.4562	0.0037	20.5735	0.0075	-0.0081	0.0075	0.1611	0.0006	157.9
784.87188935	-3.4625	0.0035	20.5983	0.0071	0.0012	0.0071	0.1595	0.0006	171.8
785.79689773	-3.4694	0.0038	20.5106	0.0076	-0.0099	0.0076	0.1610	0.0006	153.6
785.88564972	-3.4747	0.0037	20.5331	0.0073	0.0210	0.0073	0.1608	0.0006	164.0
786.82325003	-3.4638	0.0036	20.5963	0.0072	-0.0199	0.0072	0.1598	0.0006	164.2
786.88285465	-3.4655	0.0034	20.5831	0.0068	0.0331	0.0068	0.1605	0.0005	177.4
787.75881115	-3.4654	0.0043	20.5866	0.0085	-0.0343	0.0085	0.1622	0.0006	134.5
787.85438149	-3.4750	0.0045	20.5698	0.0090	0.0034	0.0090	0.1636	0.0007	128.6
789.77546920	-3.4745	0.0040	20.5644	0.0080	0.0010	0.0080	0.1621	0.0006	143.5
789.85344400	-3.4727	0.0037	20.5702	0.0075	-0.0089	0.0075	0.1620	0.0006	157.7
790.80660507	-3.4737	0.0036	20.5956	0.0072	0.0072	0.0072	0.1606	0.0005	162.2
790.88801699	-3.4656	0.0036	20.5609	0.0072	0.0105	0.0072	0.1616	0.0006	169.2
791.78669995	-3.4672	0.0038	20.5483	0.0077	0.0334	0.0077	0.1626	0.0006	149.9
791.87071697	-3.4699	0.0036	20.5499	0.0072	-0.0177	0.0072	0.1622	0.0006	166.8
792.78409886	-3.4582	0.0034	20.5411	0.0068	-0.0064	0.0068	0.1621	0.0005	171.8
792.85214066	-3.4589	0.0034	20.5711	0.0068	-0.0066	0.0068	0.1617	0.0005	176.7
795.74546592	-3.4534	0.0040	20.5601	0.0080	-0.0066	0.0080	0.1602	0.0006	141.2
795.84097630	-3.4599	0.0038	20.5616	0.0075	0.0137	0.0075	0.1630	0.0006	154.9
796.75138530	-3.4668	0.0037	20.5390	0.0075	0.0222	0.0075	0.1622	0.0005	154.1
796.85387600	-3.4591	0.0038	20.5296	0.0076	0.0130	0.0076	0.1657	0.0006	154.1
797.76222264	-3.4589	0.0038	20.5069	0.0077	0.0430	0.0077	0.1622	0.0006	150.0
797.87625292	-3.4676	0.0036	20.4928	0.0072	0.0111	0.0072	0.1607	0.0006	167.2
801.78821294	-3.4649	0.0038	20.5511	0.0075	0.0033	0.0075	0.1614	0.0006	155.4
801.89787829	-3.4701	0.0051	20.5682	0.0103	0.0190	0.0103	0.1618	0.0009	114.4
802.75056942	-3.4692	0.0036	20.5470	0.0072	0.0131	0.0072	0.1619	0.0005	160.2
802.86325582	-3.4621	0.0040	20.5395	0.0080	0.0186	0.0080	0.1616	0.0007	147.6
803.72859542	-3.4542	0.0043	20.5558	0.0087	-0.0240	0.0087	0.1621	0.0007	131.0
803.85760258	-3.4637	0.0036	20.5883	0.0072	0.0270	0.0072	0.1611	0.0006	166.5
810.72887134	-3.4693	0.0045	20.5705	0.0090	0.0264	0.0090	0.1597	0.0007	128.0
810.79508131	-3.4661	0.0036	20.5319	0.0072	0.0132	0.0072	0.1603	0.0006	166.5
810.85053677	-3.4653	0.0036	20.5459	0.0072	0.0231	0.0072	0.1607	0.0006	166.6
814.72562795	-3.4644	0.0034	20.5097	0.0068	-0.0087	0.0068	0.1595	0.0005	171.6
814.78416320	-3.4584	0.0035	20.5319	0.0070	-0.0152	0.0070	0.1592	0.0006	170.2
814.85467687	-3.4590	0.0039	20.5821	0.0078	-0.0269	0.0078	0.1582	0.0007	152.7
815.70791294	-3.4626	0.0035	20.5883	0.0070	0.0223	0.0070	0.1593	0.0005	167.6
815.78306872	-3.4602	0.0036	20.6120	0.0071	0.0030	0.0071	0.1606	0.0006	168.1
815.86244959	-3.4603	0.0033	20.5888	0.0066	0.0110	0.0066	0.1592	0.0006	189.6
816.87984898	-3.4603	0.0046	20.5048	0.0091	0.0251	0.0091	0.1617	0.0009	131.4
817.70931545	-3.4640	0.0039	20.5688	0.0079	-0.0138	0.0079	0.1614	0.0006	148.6
817.77900779	-3.4581	0.0034	20.5740	0.0069	-0.0283	0.0069	0.1600	0.0006	173.0
817.84788906	-3.4636	0.0034	20.5545	0.0069	-0.0199	0.0069	0.1600	0.0006	177.8
820.76823244	-3.4646	0.0036	20.5824	0.0071	-0.0200	0.0071	0.1603	0.0006	170.9
820.87233534	-3.4556	0.0036	20.5720	0.0072	0.0063	0.0072	0.1594	0.0007	171.7
822.70228346	-3.4661	0.0042	20.5272	0.0083	0.0189	0.0083	0.1605	0.0007	140.7
822.81967340	-3.4632	0.0038	20.5155	0.0076	0.0195	0.0076	0.1598	0.0006	159.9
823.82120368	-3.4600	0.0033	20.6031	0.0066	0.0154	0.0066	0.1589	0.0006	187.6
831.68738142	-3.4571	0.0037	20.5936	0.0074	-0.0057	0.0074	0.1612	0.0006	164.4
834.66790071	-3.4617	0.0044	20.5143	0.0088	0.0019	0.0088	0.1597	0.0007	135.0
836.68938313	-3.4578	0.0049	20.5885	0.0098	0.0556	0.0098	0.1637	0.0009	121.6
837.65953470	-3.4653	0.0053	20.6056	0.0105	0.0137	0.0105	0.1631	0.0010	113.3
838.65577061	-3.4664	0.0038	20.5938	0.0076	-0.0095	0.0076	0.1585	0.0007	160.1
840.62130041	-3.4499	0.0051	20.4929	0.0103	-0.0189	0.0103	0.1620	0.0009	114.5
840.71047795	-3.4653	0.0039	20.5675	0.0078	-0.0016	0.0078	0.1612	0.0007	159.3
843.63219053	-3.4581	0.0043	20.5393	0.0087	-0.0127	0.0087	0.1598	0.0007	136.4
846.60357079	-3.4561	0.0043	20.6207	0.0086	-0.0361	0.0086	0.1606	0.0007	138.6

Table 1. Continued.

BJD - 2457000 days	RV Km ⁻¹	σ RV Km ⁻¹	FWHM Km ⁻¹	σ FWHM Km ⁻¹	BIS Km ⁻¹	σ BIS Km ⁻¹	S index	σ S index	SN50
846.76228129	-3.4662	0.0042	20.6546	0.0084	-0.0171	0.0084	0.1625	0.0008	146.2
847.64546969	-3.4697	0.0052	20.5441	0.0103	0.0014	0.0103	0.1623	0.0010	114.1
847.79736299	-3.4796	0.0043	20.5497	0.0087	0.0294	0.0087	0.1619	0.0009	143.6
848.59636147	-3.4671	0.0039	20.5542	0.0079	0.0120	0.0079	0.1608	0.0006	150.2
848.77503505	-3.4638	0.0041	20.6053	0.0081	0.0378	0.0081	0.1603	0.0008	153.1
849.60961949	-3.4684	0.0038	20.5916	0.0076	0.0237	0.0076	0.1609	0.0006	157.6
850.63693749	-3.4672	0.0039	20.5326	0.0077	0.0096	0.0077	0.1620	0.0007	156.0
850.76055370	-3.4607	0.0038	20.5275	0.0076	0.0115	0.0076	0.1606	0.0007	162.9
858.55563723	-3.4650	0.0040	20.5953	0.0080	0.0288	0.0080	0.1615	0.0007	148.0
858.75334326	-3.4580	0.0041	20.5676	0.0083	0.0000	0.0083	0.1608	0.0008	148.9
859.62681084	-3.4564	0.0036	20.5296	0.0072	0.0138	0.0072	0.1613	0.0006	168.4
864.56981350	-3.4699	0.0043	20.6523	0.0087	-0.0044	0.0087	0.1606	0.0008	138.5
864.70246360	-3.4688	0.0045	20.6414	0.0090	0.0082	0.0090	0.1598	0.0008	134.2
865.59395635	-3.4673	0.0040	20.5595	0.0079	0.0679	0.0079	0.1604	0.0007	154.7
865.71678168	-3.4651	0.0037	20.5752	0.0074	0.0067	0.0074	0.1613	0.0007	170.3
872.63962719	-3.4560	0.0047	20.6016	0.0094	-0.0158	0.0094	0.1641	0.0009	127.6
872.71917868	-3.4528	0.0038	20.6164	0.0077	0.0046	0.0077	0.1625	0.0008	163.8
873.65195481	-3.4703	0.0039	20.5755	0.0078	0.0325	0.0078	0.1618	0.0007	157.6
874.63215394	-3.4482	0.0045	20.5205	0.0090	-0.0409	0.0090	0.1613	0.0008	131.9
875.66309573	-3.4685	0.0074	20.5556	0.0147	0.0487	0.0147	0.1655	0.0019	83.4
875.71961729	-3.4590	0.0071	20.6324	0.0142	0.0179	0.0142	0.1610	0.0018	86.7
876.57427048	-3.4572	0.0037	20.4974	0.0074	-0.0078	0.0074	0.1620	0.0006	163.2
876.66817071	-3.4540	0.0036	20.5438	0.0071	0.0070	0.0071	0.1607	0.0006	173.3
877.61720792	-3.4568	0.0039	20.5600	0.0078	0.0046	0.0078	0.1623	0.0007	156.6
877.71668663	-3.4534	0.0045	20.5426	0.0090	0.0045	0.0090	0.1629	0.0010	138.8
821.58826616	-3.4380	0.0134	20.5929	0.0268	-0.0470	0.0268	0.1726	0.0042	45.6
821.59293130	-3.4620	0.0134	20.6711	0.0267	0.0711	0.0267	0.1780	0.0041	45.2
821.59874146	-3.4452	0.0121	20.5724	0.0242	-0.0065	0.0242	0.1709	0.0035	49.7
821.60311658	-3.4524	0.0115	20.6386	0.0230	0.1648	0.0230	0.1713	0.0031	52.1
821.81973748	-3.4560	0.0092	20.4562	0.0185	0.0456	0.0185	0.1633	0.0028	66.3
821.82374159	-3.4536	0.0082	20.4598	0.0163	0.0009	0.0163	0.1682	0.0023	74.7
821.82815170	-3.4636	0.0085	20.5900	0.0169	-0.0270	0.0169	0.1681	0.0025	73.4
821.83259682	-3.4699	0.0088	20.5595	0.0175	-0.0006	0.0175	0.1647	0.0025	70.4
821.83692593	-3.4771	0.0084	20.5871	0.0169	0.0366	0.0169	0.1643	0.0025	72.9
821.84157805	-3.4408	0.0097	20.6014	0.0195	0.0992	0.0195	0.1715	0.0031	64.2
821.84561815	-3.4578	0.0096	20.5806	0.0192	-0.0845	0.0192	0.1676	0.0030	64.5
821.85023628	-3.4564	0.0106	20.6115	0.0212	0.0402	0.0212	0.1689	0.0033	58.4
821.85456539	-3.4733	0.0091	20.4726	0.0182	0.0560	0.0182	0.1720	0.0028	68.0
821.85900950	-3.4759	0.0092	20.5772	0.0183	-0.0794	0.0183	0.1705	0.0028	68.6
821.86339662	-3.4431	0.0147	20.5676	0.0294	0.0308	0.0294	0.1682	0.0052	42.8
821.86776073	-3.4726	0.0091	20.6530	0.0182	-0.2816	0.0182	0.1714	0.0030	69.0
821.87229784	-3.4446	0.0091	20.6435	0.0183	0.0999	0.0183	0.1677	0.0029	69.2
821.87662696	-3.4799	0.0089	20.6105	0.0177	-0.1746	0.0177	0.1658	0.0029	70.9
821.88115207	-3.4545	0.0092	20.6548	0.0184	0.0352	0.0184	0.1658	0.0030	68.3
821.88549318	-3.4505	0.0098	20.5941	0.0197	0.2638	0.0197	0.1636	0.0033	64.7
821.88990330	-3.4662	0.0097	20.5892	0.0193	-0.0145	0.0193	0.1631	0.0032	65.6
821.89431241	-3.4773	0.0099	20.5490	0.0198	0.0607	0.0198	0.1728	0.0034	63.8
821.89864152	-3.4789	0.0100	20.6267	0.0199	0.0226	0.0199	0.1720	0.0034	63.4
821.90309763	-3.4736	0.0106	20.5597	0.0212	0.0874	0.0212	0.1709	0.0036	59.8
821.90784375	-3.4563	0.0118	20.7072	0.0235	-0.0580	0.0235	0.1644	0.0047	53.8
821.91157085	-3.4534	0.0233	21.1203	0.0466	-0.3271	0.0466	0.1683	0.0161	29.4
821.91676798	-3.4571	0.0133	20.3798	0.0265	-0.2900	0.0265	0.1682	0.0056	49.2
842.53900492	-3.4610	0.0121	20.4834	0.0242	-0.0195	0.0242	0.1653	0.0037	51.4
842.54623887	-3.4522	0.0108	20.5691	0.0215	-0.0104	0.0215	0.1538	0.0030	56.7
842.55340281	-3.4710	0.0102	20.4671	0.0204	0.0105	0.0204	0.1551	0.0028	58.8
842.56070576	-3.4671	0.0105	20.6660	0.0209	1.2301	0.0209	0.1610	0.0029	57.7
842.56807870	-3.4702	0.0096	20.6130	0.0193	-0.0089	0.0193	0.1628	0.0025	62.5
842.57525464	-3.4645	0.0103	20.5879	0.0206	0.0320	0.0206	0.1578	0.0028	58.9
842.58268459	-3.4855	0.0093	20.5258	0.0186	0.0337	0.0186	0.1593	0.0024	64.5
842.58971053	-3.4573	0.0105	20.5380	0.0209	-0.0486	0.0209	0.1552	0.0029	58.0

Table .1. Continued.

BJD - 2457000 days	RV Km ⁻¹	σ RV Km ⁻¹	FWHM Km ⁻¹	σ FWHM Km ⁻¹	BIS Km ⁻¹	σ BIS Km ⁻¹	S index	σ S index	SN50
842.59729147	-3.4703	0.0079	20.5855	0.0158	0.0420	0.0158	0.1581	0.0018	75.8
842.60424742	-3.4650	0.0090	20.5217	0.0180	0.0101	0.0180	0.1623	0.0023	66.5
842.61156136	-3.4717	0.0086	20.5593	0.0172	-0.0075	0.0172	0.1616	0.0021	69.9
842.61885330	-3.4690	0.0092	20.4570	0.0184	0.0266	0.0184	0.1573	0.0023	65.6
842.62615624	-3.4686	0.0092	20.5853	0.0185	-0.0010	0.0185	0.1577	0.0024	65.0
842.63345918	-3.4675	0.0080	20.6186	0.0161	-0.0337	0.0161	0.1605	0.0019	74.1
842.64130711	-3.4700	0.0079	20.4509	0.0157	0.0028	0.0157	0.1583	0.0019	76.2
842.64840105	-3.4871	0.0077	20.5747	0.0153	0.1201	0.0153	0.1609	0.0018	78.3
842.65585499	-3.4646	0.0072	20.5599	0.0144	0.0376	0.0144	0.1595	0.0017	83.3
842.66293793	-3.4617	0.0072	20.5494	0.0143	-0.0207	0.0143	0.1633	0.0017	83.9
842.87929984	-3.3916	0.0336	20.3709	0.0672	-0.1926	0.0672	0.1363	0.0413	20.7